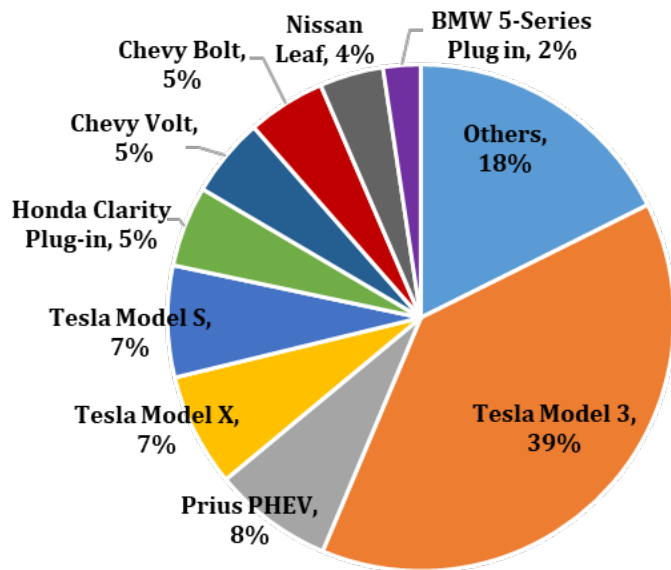
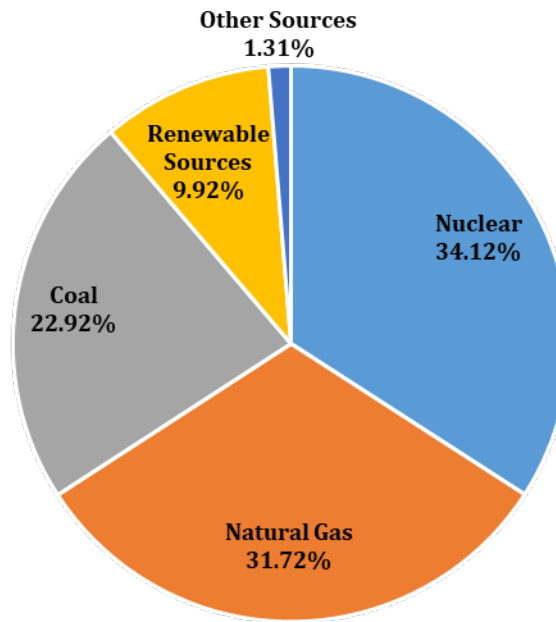


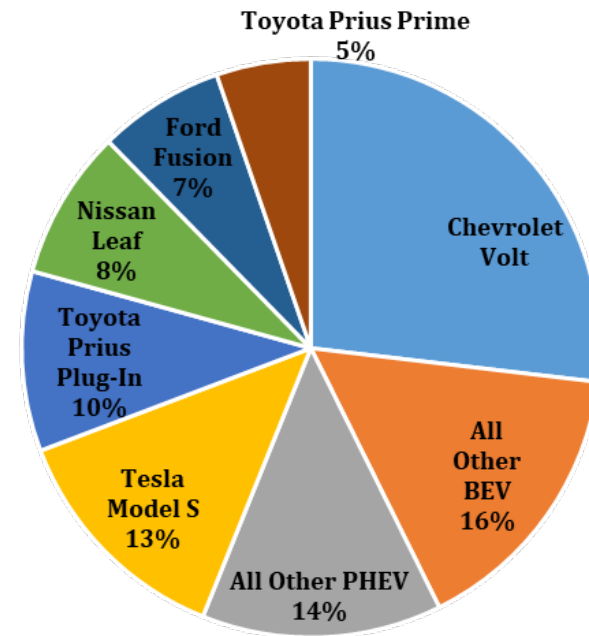
2018 National Sales of Leading BEVs and PHEVs



2019 MD Electricity Generation Source



Maryland Leading PEV 2018 Registrations



Avg. Price for
Gallon of Gasoline
in MD:

\$2.37

Avg. Price of
Electric Equivalent
Gallon in MD:

\$1.19

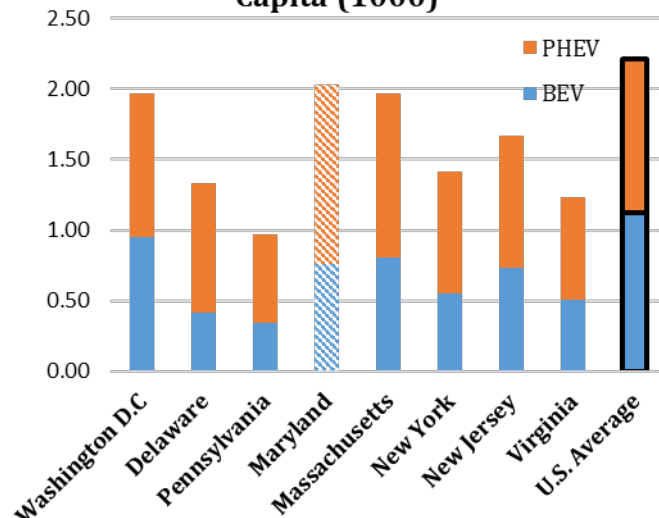
*Renewables (Wind, Solar, Biomass, and Hydro) make up 9.92% of Maryland's source for electricity.
~Other Sources includes Oil and Other Miscellaneous Sources

https://www.afdc.energy.gov/vehicles/electric_emissions.php

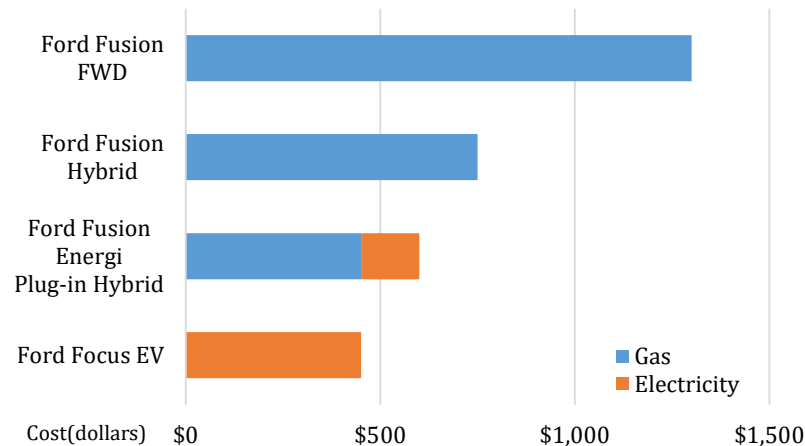
Check model availability on AFDC. Note availability varies by state.

<https://www.afdc.energy.gov/states/>

Mid-Atlantic PEV Registrations per Capita (1000)



Annual Fuel Cost*



*based on 15,000 miles/year, MD averages of gasoline price of \$2.37/gallon and \$0.12/kWh of electricity

MD Share of Total U.S. PEVs

1.62%

Reference:

Gasoline and Electricity Price, EIA
Number of chargers by type, AFDC
Vehicle fuel efficiency, Fueleconomy.gov
Registration, IHS Polk Data
PEV Sales, Hybridcars.com

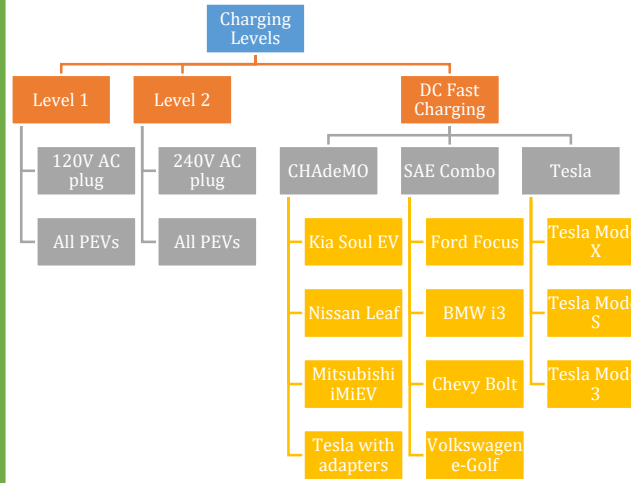
Maryland Electric Vehicles Fact Sheet

Charging Your Electric Vehicle:

There are three different levels of charging:

- **AC Level 1:** This provides 120 volts of charging, typically found in a home outlet. Overnight charging can replenish an entire PHEV battery, but not all BEV batteries.
- **AC Level 2:** This level provides 240 volts, about 10-20 miles of range per hour of charging. This can be installed for home charging, but is also used for public charging. In the home, it can replenish an entire BEV battery overnight.
- **DC Fast Charging:** This is for rapid charging along heavy traffic corridors. In 20 minutes it can provide enough battery life for a 50-70 miles of range. In ideal conditions of mild temperatures and a low initial charge, a fast charge to 80% will take about 30 minutes for a BEV, but longer in cold weather. There are three types of DC fast charging systems, depending on the vehicle: SAE J1772 combo, CHAdeMO, and Tesla. Adapter is available for Tesla Model S and Model X to use the CHAdeMO chargers.

Charging Levels and Types

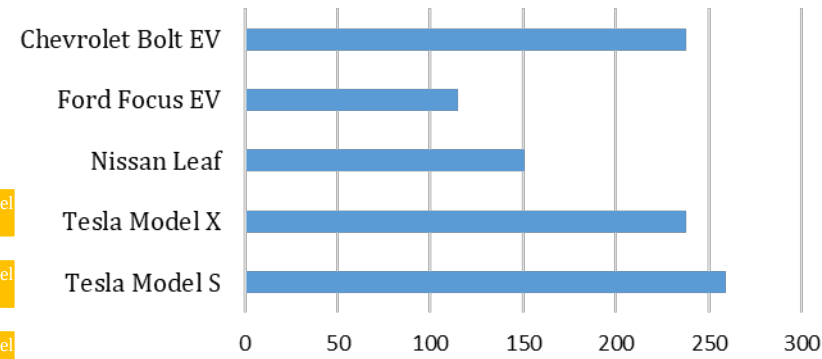


* BMW i3Rex and Outlander PHEV are the only two PHEV to be able fast charged

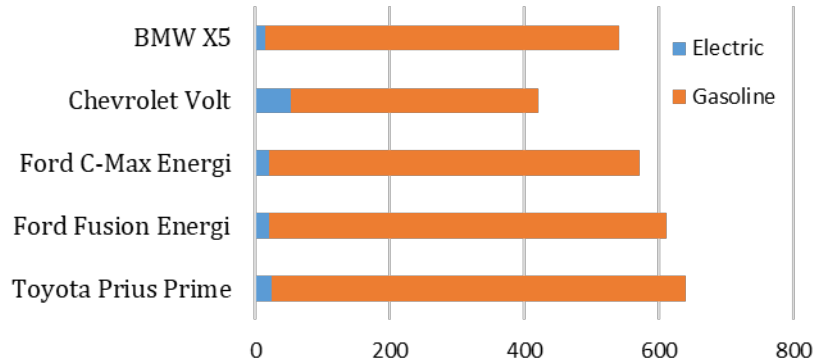
Did You Know?

A full charge can give PHEVs up to 100 miles of electric range and BEVs up to 300 miles of range, depending on the model. These distances can change depending on factors like weather, driving conditions, and driving habits. See on the right how varying your speed, driving behavior, and temperature affect battery range.

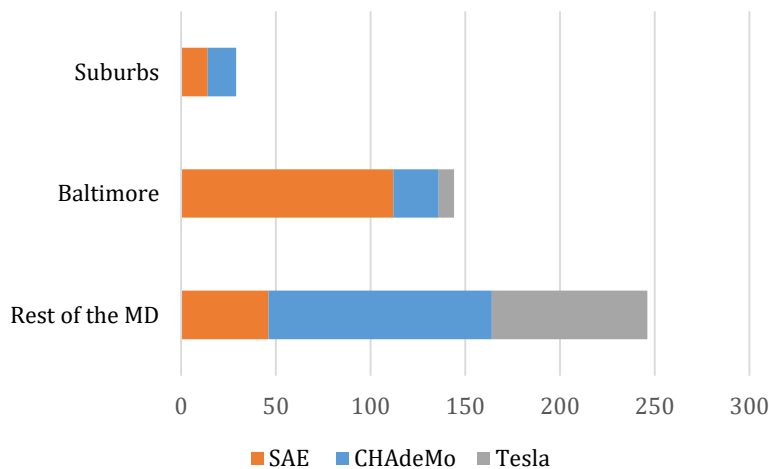
EPA Rated Range of Top Selling BEV in Maryland (2018)



EPA Rated Range of Top Selling PHEV in Maryland (2018)



DC Fast Charging Outlets in MD



Range Depletion Dependent on Driving and Weather Conditions

