

Prince George's County

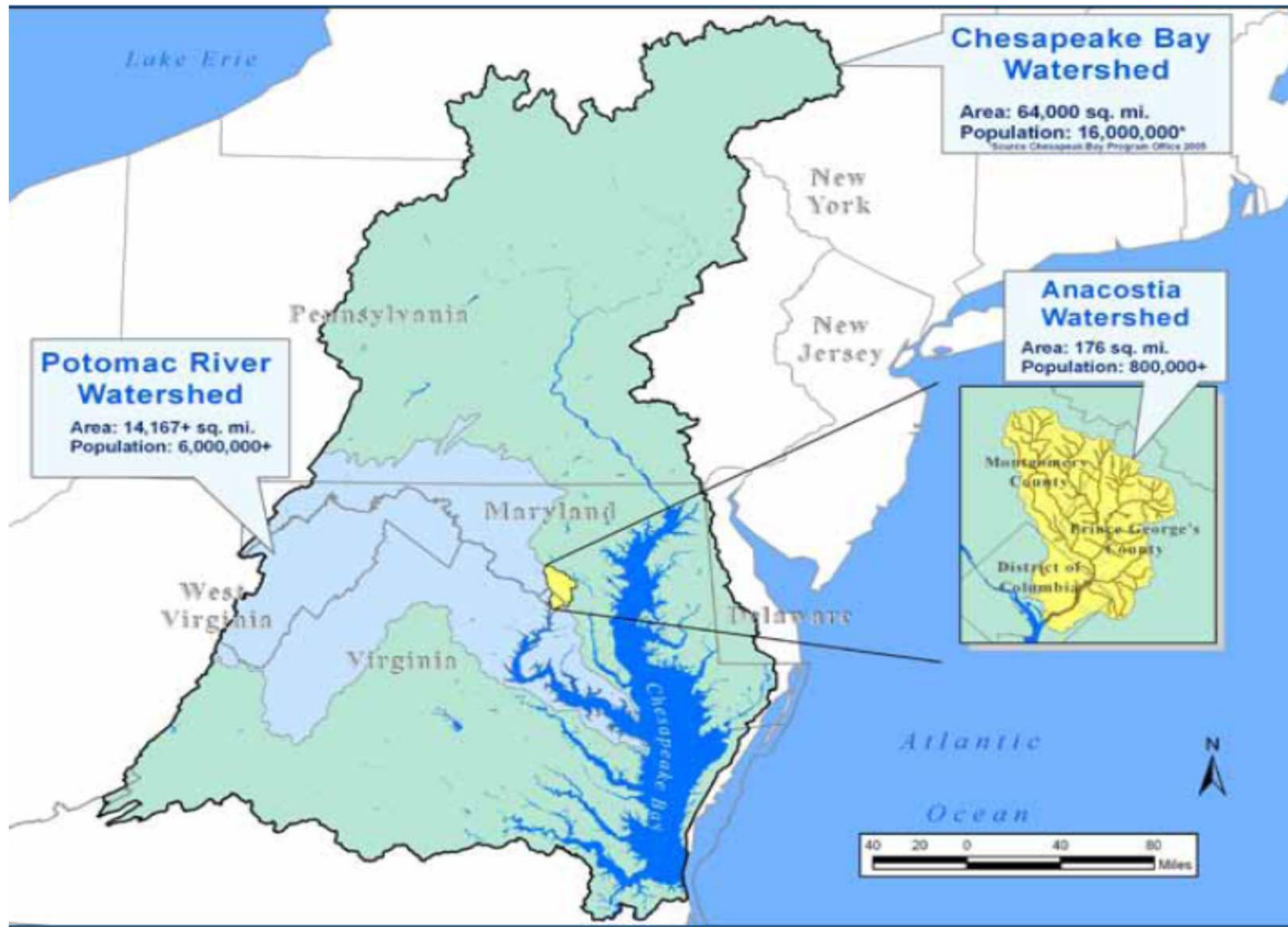
Clean Water Program

Department of the Environment



CHESEAPEAKE BAY WATERSHED

“YOU ARE HERE”



CHESAPEAKE BAY WATERSHED

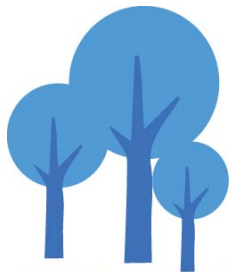
PRINCE GEORGE'S COUNTY, MARYLAND

- Population: 900,000
- 500 square miles
- Urban, Suburban, Rural
- Three major rivers
- Birthplace of Low Impact Development (LID)



NEIGHBORHOOD POLLUTION INCREASING

MUST ADDRESS POLLUTED RUNOFF



STORM WATER MANAGEMENT DIVISION

NEIGHBORHOOD POLLUTION INCREASING

MUST ADDRESS POLLUTED RUNOFF



NEW CLEAN WATER ACT MANDATES

MUST ADDRESS POLLUTED RUNOFF



NEW CLEAN WATER ACT MANDATES

MUST ADDRESS POLLUTED RUNOFF



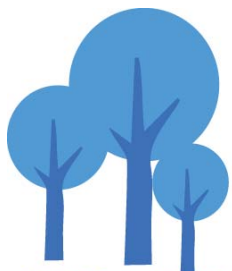
NEW CLEAN WATER ACT MANDATES

MUST ADDRESS POLLUTED RUNOFF



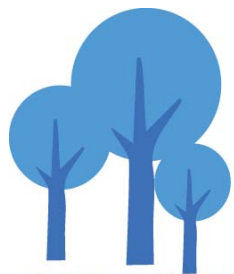
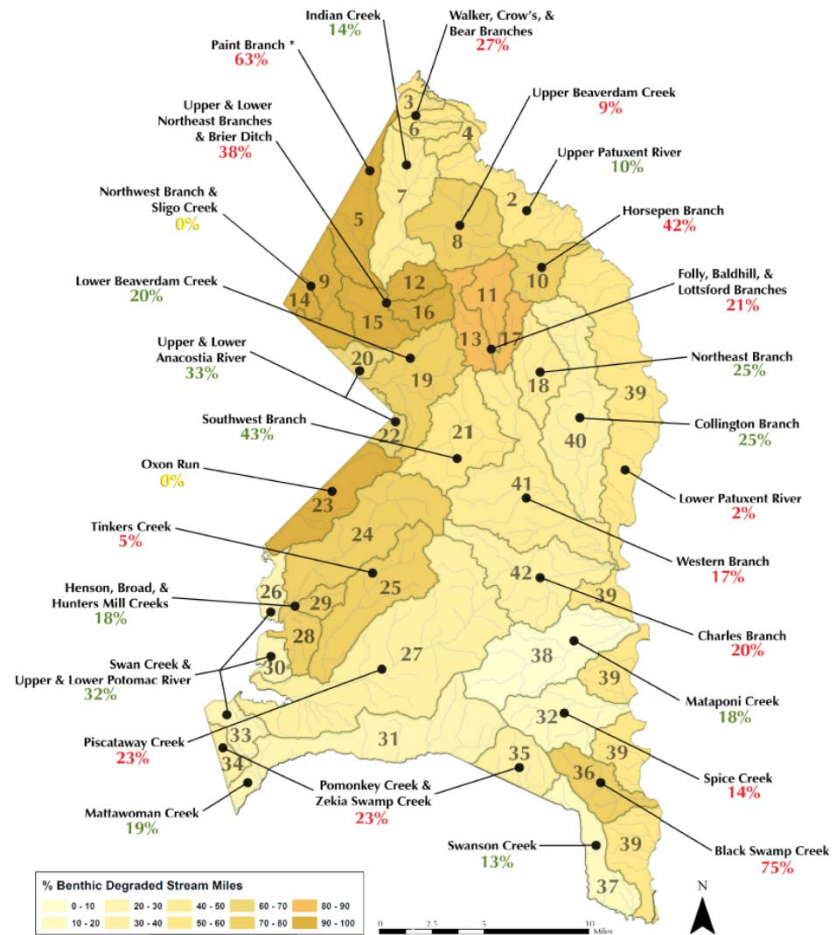
NEW CLEAN WATER ACT MANDATES

MUST ADDRESS POLLUTED RUNOFF



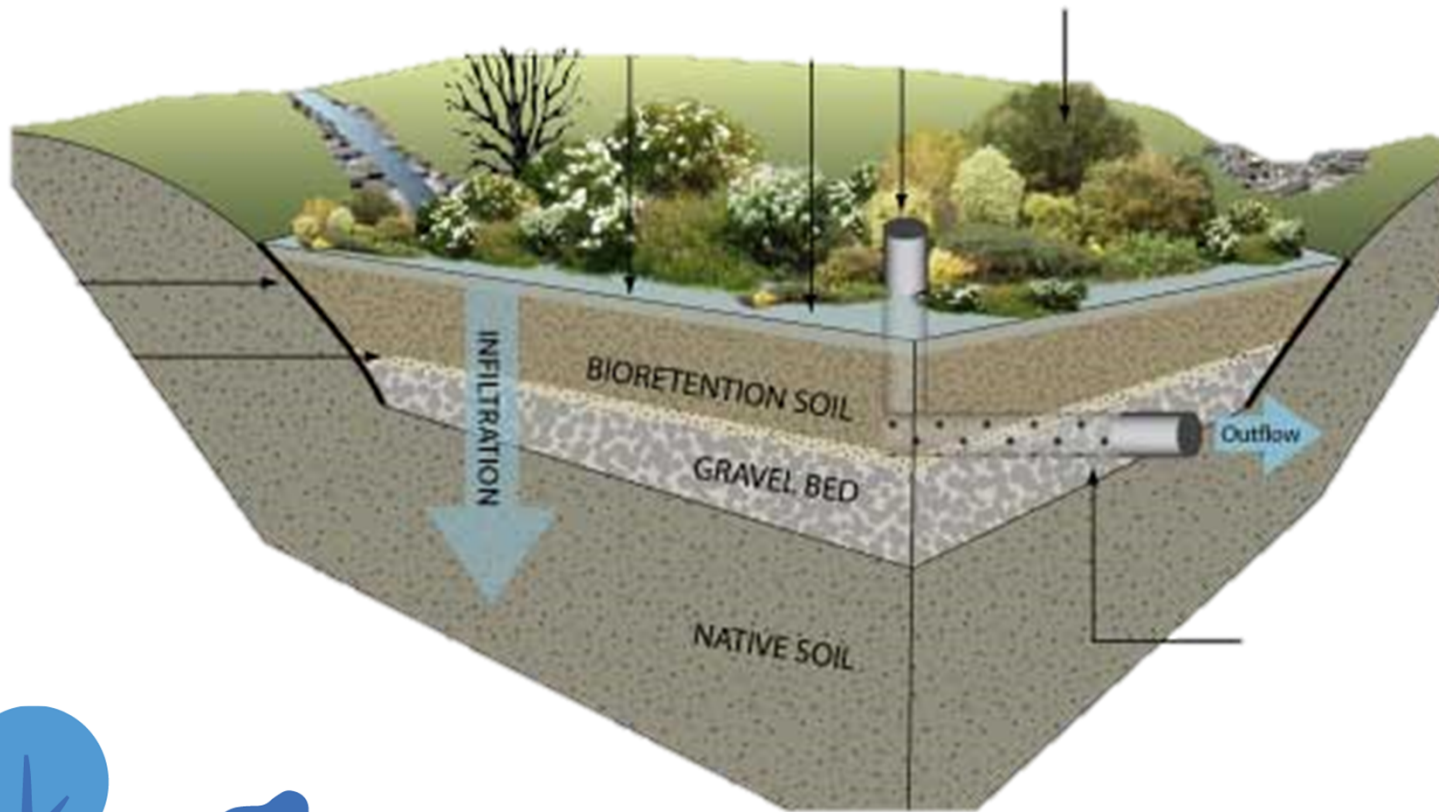
STORM WATER MANAGEMENT DIVISION

NEW CLEAN WATER ACT MANDATES



CLEAN WATER THROUGH RETROFITS

PERMEABLE PAVEMENT



CLEAN WATER THROUGH RETROFITS

BIOSWALES



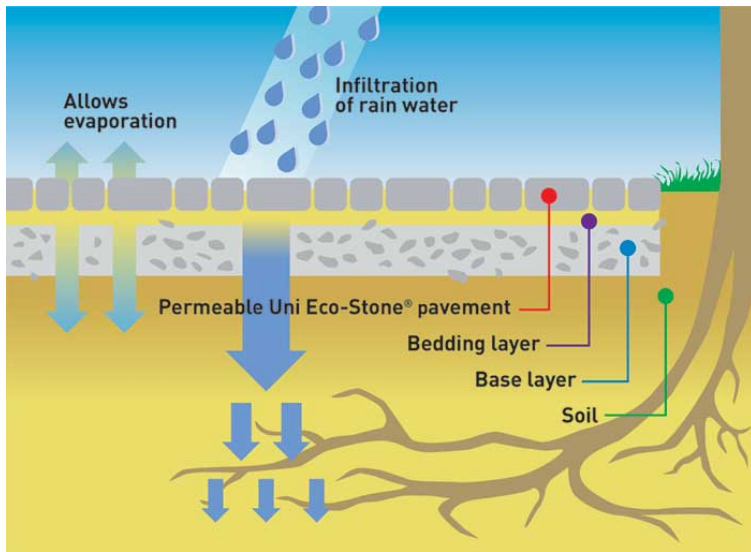
CLEAN WATER THROUGH RETROFITS

PERMEABLE PAVEMENT



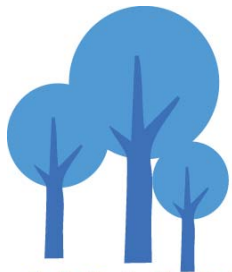
CLEAN WATER THROUGH RETROFITS

PERMEABLE PAVERS



CLEAN WATER THROUGH RETROFITS

TREEBOX RAINGARDENS



STORM WATER MANAGEMENT DIVISION

NEW CLEAN WATER ACT MANDATES

EPA SETS AMBITIOUS GOALS

Mandate for Prince George's County

- Retrofit 15,000 impervious acres by 2025

The Prince George's Model:

- Clean and healthy neighborhoods = clean and healthy waters
- Revitalize older communities
- Lead with innovation
- Grow local economy
- Partner as much as possible

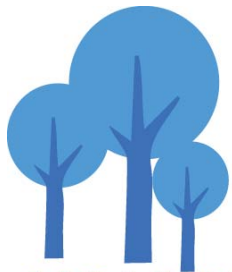
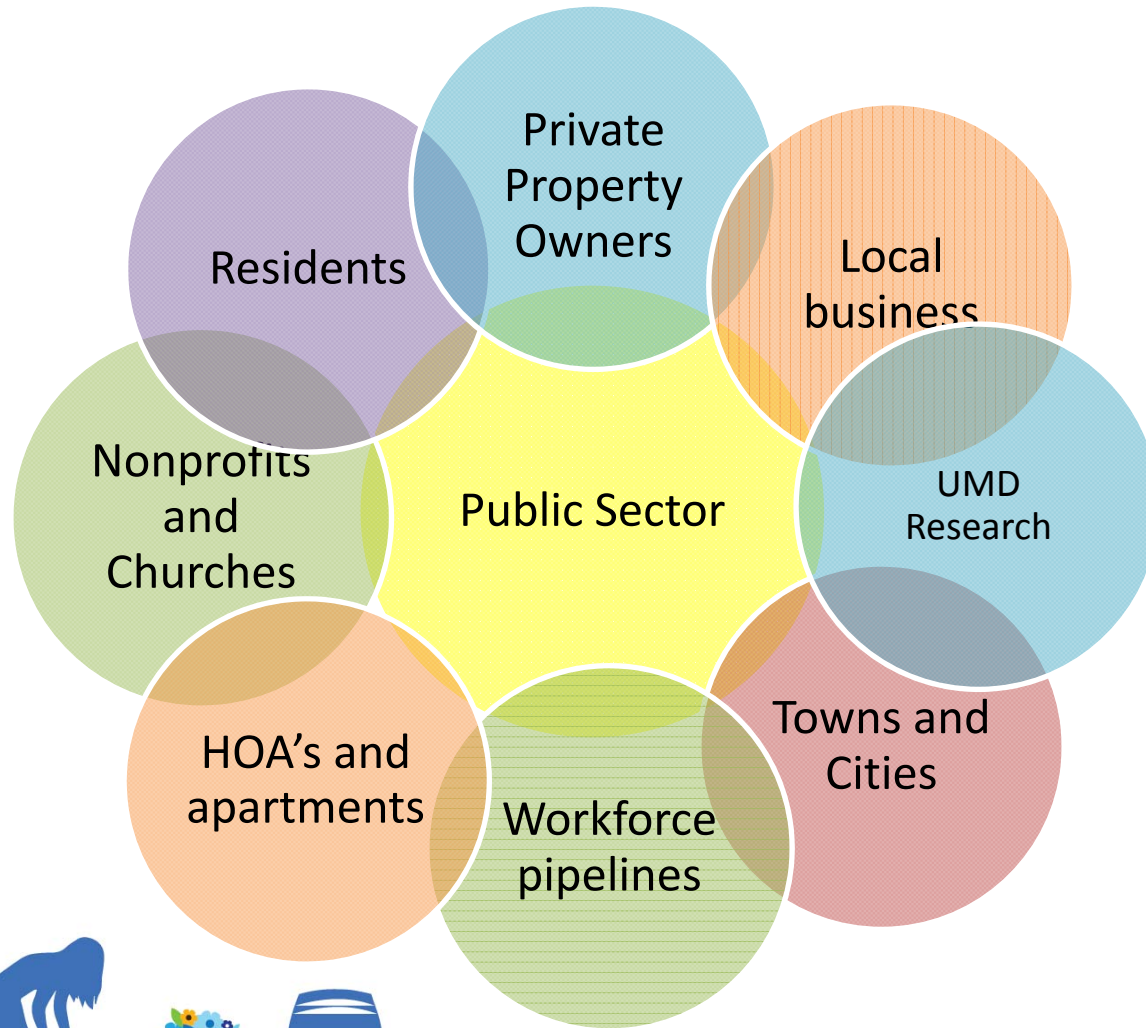


WE ARE NOT ENOUGH

Public Sector



WE MUST PARTNER



KEY PARTNERS: PRIVATE PROPERTY OWNERS

Our **Rain Check** Program provides up to **\$3 Million** in cash Rebates, Grants and technical assistance available for private property owners to install stormwater management practices on their property to reduce stormwater runoff pollution.



KEY PARTNERS: SCHOOLS

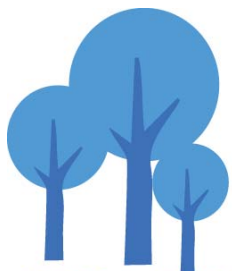
Our 200 school properties can help us meet our retrofit acreage goals while we help them meet their environmental literacy goals, turning raingardens into outdoor classrooms.



KEY PARTNERS: CHURCHES AND NONPROFITS

**Alternative Compliance Program - Up to 100% Reduction
of Impact Portion of Clean Water Act Fee**

- 1. Easements:** Up to 50% reduction
- 2. Green Teams and Green Ministries:** Up to 25% reduction
- 3. Green Housekeeping:** Up to 25% reduction



KEY PARTNER: PRIVATE SECTOR

“BETTER, GREENER, FASTER”

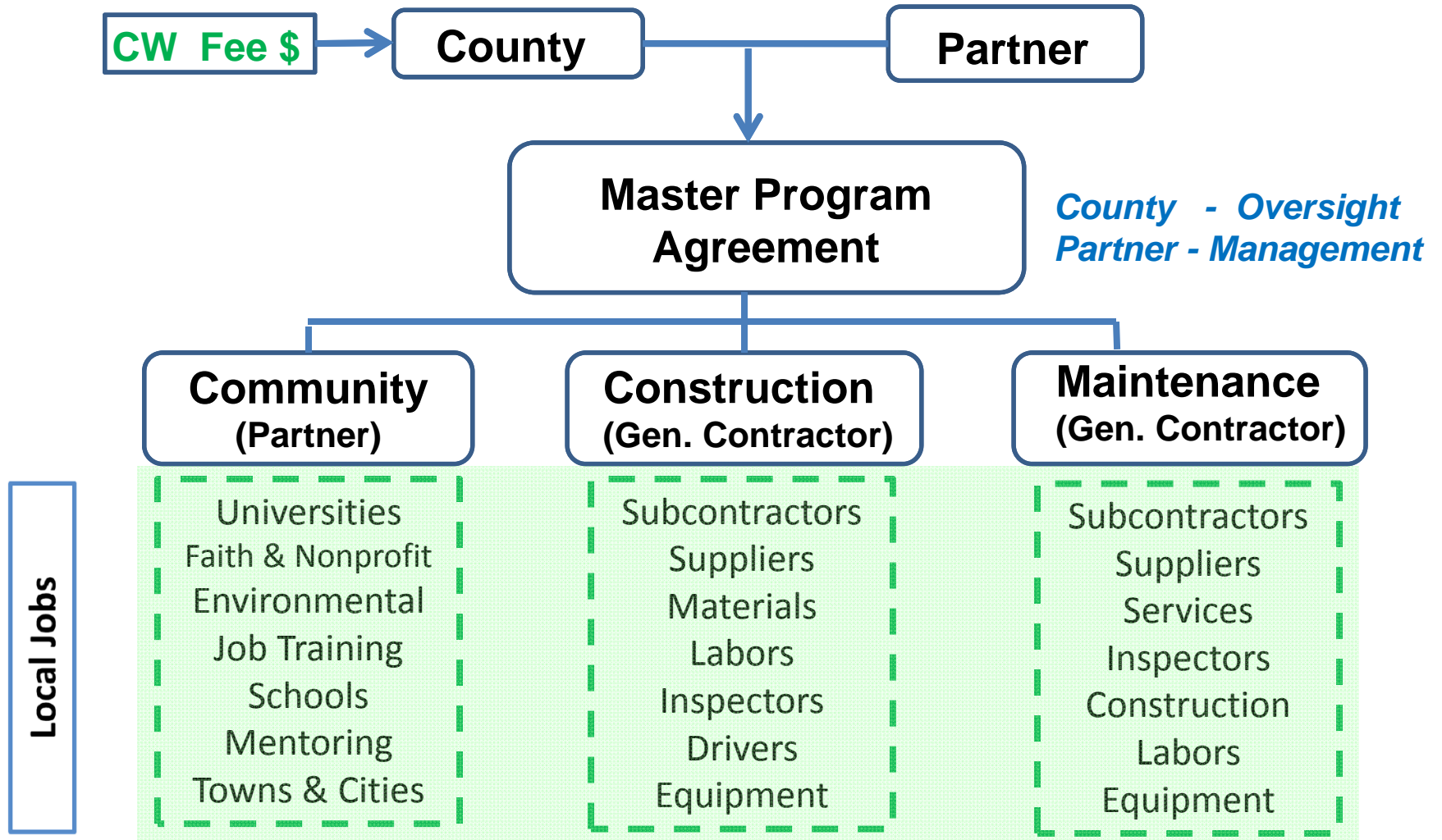
Launching Public Private Partnership (P3) Model for Efficiency to build our clean water infrastructure and industry center

- Enhance strengths and mitigate weaknesses
- Efficiencies in procurement, permitting, design, construction, maintenance, and operations.
- Business development requirements
 - Expand capacity of local businesses
 - Attract and develop new businesses to County



CLEAN WATER PARTNERHIP

LOCAL INVESTMENT, JOBS, BUSINESS, DEVELOPMENT, COMMUNITY WEALTH



CLEAN WATER PARTNERSHIP

LOCAL INVESTMENT, JOBS, BUSINESS, DEVELOPMENT, COMMUNITY WEALTH

- Partner: Corvias Solutions
- Construction: 3 years to retrofit 2,000 acres
- Maintenance: 30 years to maintain 2,000 acres
- Manage \$100M in contracting
 - Paid up to 10% fee if performance goals are met:
 - Time, budget, procurement targets, business development
 - Ramps up to 40% County-based spending
- *Will “race” to 2000 acres vs DoE Capital Projects team*



MAJOR ECONOMIC DRIVER

\$1.2B PROJECTED SPENDING BY 2025

15,000 Retrofitted acres =

- 46,000 stormwater devices
- Job opportunities:
 - Design, engineering, project management, construction, landscaping, maintenance
 - Supply chain & support
 - Research



MAJOR ECONOMIC DRIVER

\$1.2B PROJECTED SPENDING BY 2025

Local Business Incentives

- Jobs First Legislation: 40% Target for certified County Based Businesses
- Business Development Reserve Program assist local small and minority business enterprises
- Major spending on Prince George's businesses



MAJOR ECONOMIC DRIVER

\$1.2B PROJECTED SPENDING BY 2025

Workforce Pipelines

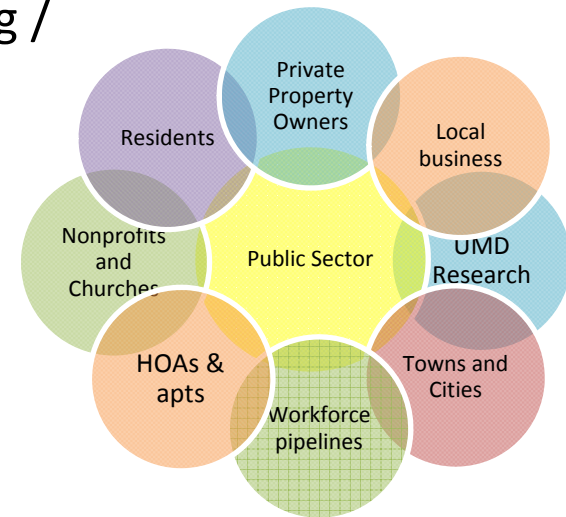
- Community College courses
- One Stop Workforce Center
- Worker-Owned Co-op/CFE
- Labor
- Private Sector
- Universities



LESSONS LEARNED

(SO FAR....)

- Have “interdisciplinary” approach
- Market & communicate
- Engage broad coalition of partners
- Invest in program planning / predevelopment
- Little risk in taking risk



Thank you.

