

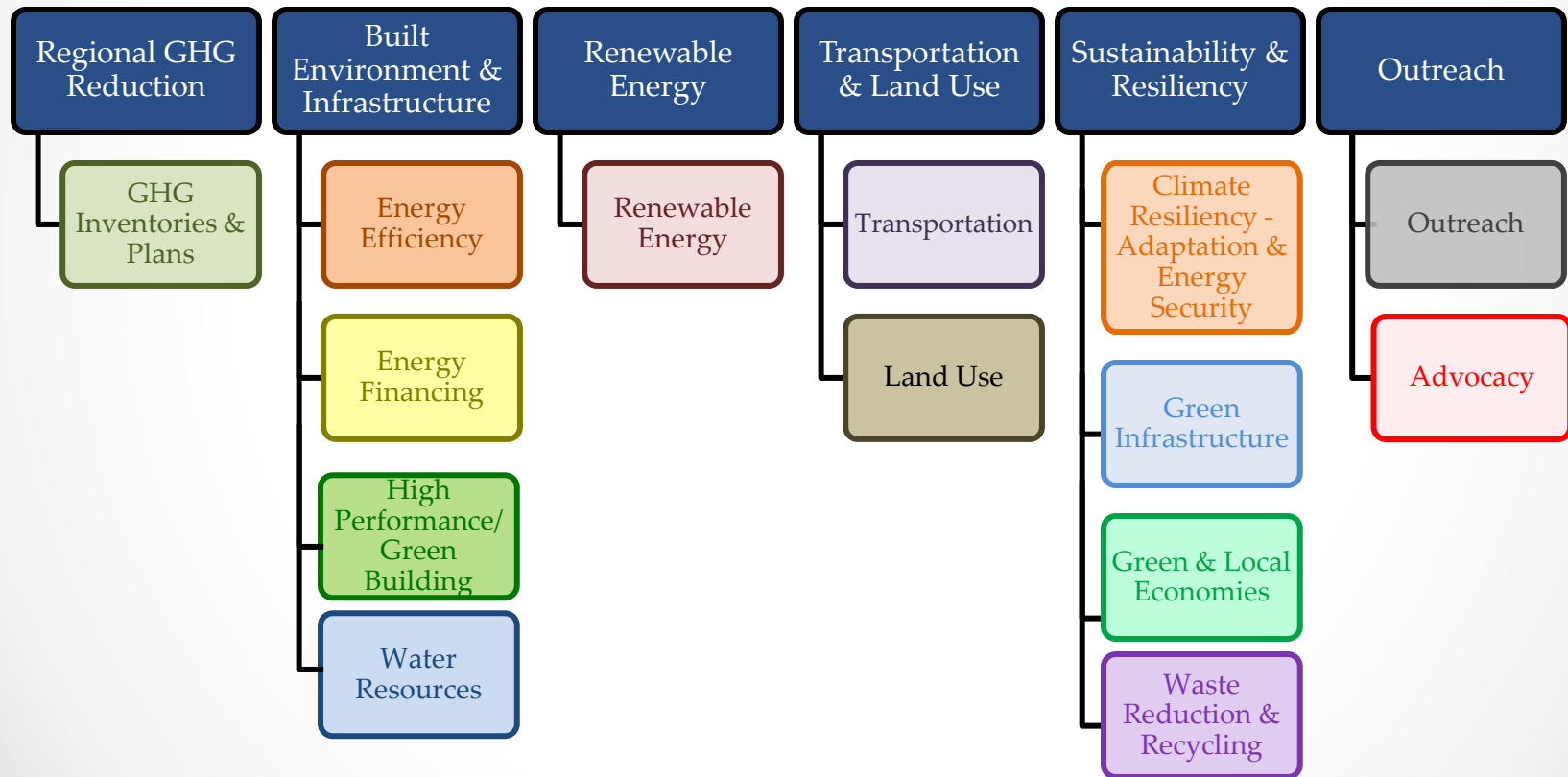


Climate & Energy Survey Results and ENVISION Rating Tool

A. Campbell, COG Staff
WRTC 5/1/2014



2013–2016 Action Plan Categories





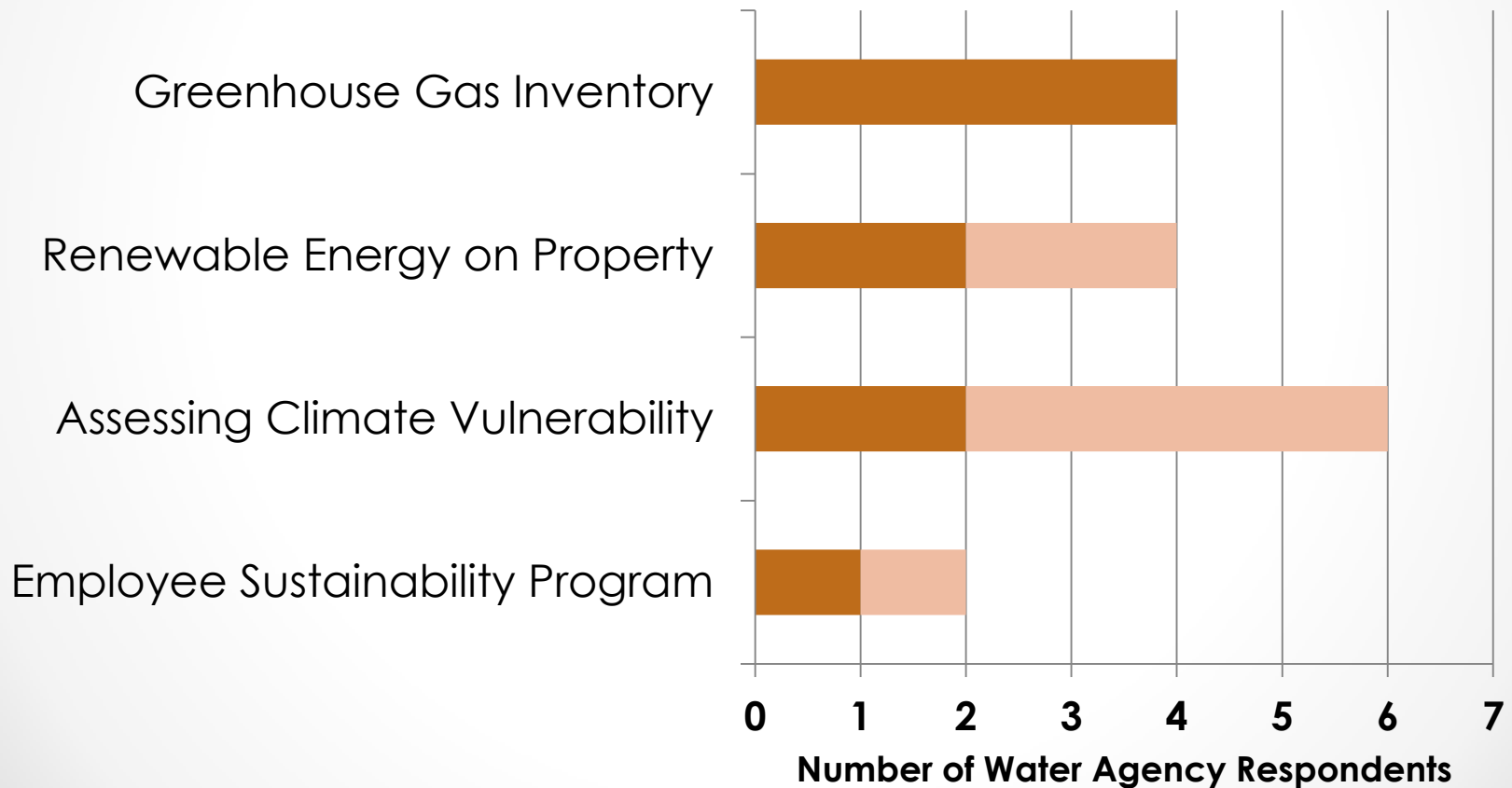
CEEPC Survey Results Received

- √ Alex Renew
- √ DC Water
- √ Loudoun Water
- √ PWCSA
- √ UOSA
- √ WAD
- √ WSSC



Response Summary

■ 2012 ■ 2013





Alexandria ReNEW

- ✓ Energy Minimization Plan goal: net energy neutrality
- ✓ Assessing impacts of climate change when upgrading facilities
- ✓ Use digester biogas, solar, biodiesel
- ✓ Offer employee sustainability training

ReNEW's digester produces enough gas to heat 793 homes a year





DC Water

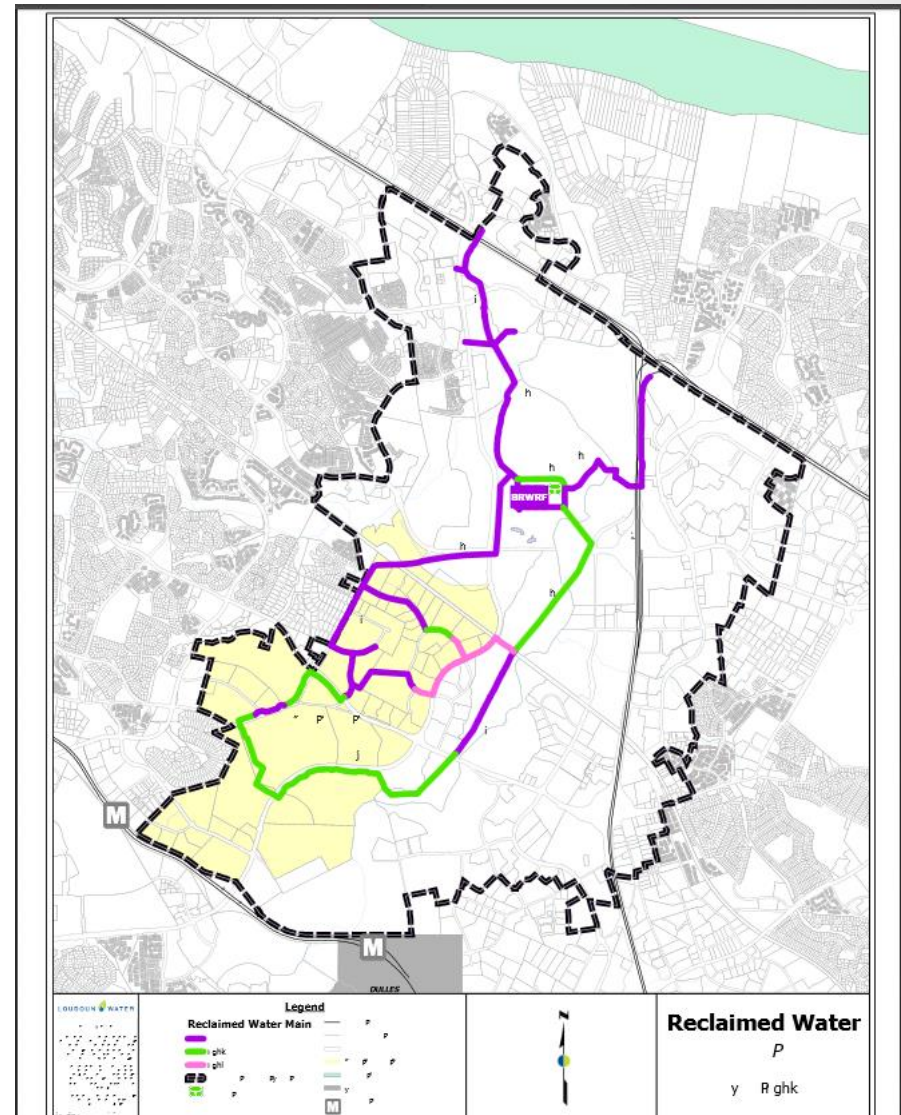
- Conducted a utility-wide greenhouse gas inventory in 2009
- Conducted vulnerability assessments at several facilities including Blue Plains
- Building a combined heat and power plant to generate 13 MW renewable energy



Loudoun Water



- Implemented renewable energy system
- Green buildings
- Implemented a water reclamation system at Broad Run





Prince William County Service Authority

- ✓ Conducted an energy study; evaluating alternatives
- ✓ New Public Education Building will be a green building
- ✓ Uses reclaimed water for irrigation





UOSA

- ✓ Conducted an energy audit in 2008 that identified Energy Conservation Measures to be implemented
- ✓ Currently constructing a digester gas-fueled CHP system
- ✓ Established a Sustainability Policy





Washington Aqueduct

- ✓ Participated in Army Corps of Engineers Greenhouse Gas Accounting system
- ✓ Completed an energy audit and is working to implement an Energy Savings Performance Contract (ESPC) to install recommended energy conservation measures.
- ✓ Purchases 7.5% renewable energy through a GSA contract





WSSC

- ✓ Developed a Greenhouse Gas Action Plan and Strategic Energy Plan
- ✓ Solar panels make 2 MW – saving ratepayers \$350 million

**About 30% of
WSSC's
electricity
comes from
wind power**





LEED

Leadership in Energy and Environmental Design

Categories:

- <http://www.usgbc.org/leed#rating>

Credits for New Construction:

<http://www.usgbc.org/credits/new-construction/v4>

- Water conservation: some required, some optional
- Stormwater capture: optional



THE ENVISION™ RATING SYSTEM



What Types Of Infrastructure Will



Envision™ Rate?



ENERGY

Geothermal
Hydroelectric
Nuclear
Coal
Natural Gas
Oil/Refinery
Wind
Solar
Biomass



WATER

Potable water distribution
Capture/Storage
Water Reuse
Storm Water Management
Flood Control



WASTE

Solid waste
Recycling
Hazardous Waste
Collection & Transfer



TRANSPORT

Airports
Roads
Highways
Bikes
Pedestrians
Railways
Public Transit
Ports
Waterways



LANDSCAPE

Public Realm
Parks
Ecosystem Services



INFORMATION

Telecommunications
Internet
Phones
Satellites
Data Centers
Sensors



60 Credits in 5 Categories



**QUALITY
OF LIFE**

Purpose, Community, Wellbeing



LEADERSHIP

Collaboration, Management, Planning



**RESOURCE
ALLOCATION**

Materials, Energy, Water



**NATURAL
WORLD**

Siting, Land & Water, Biodiversity

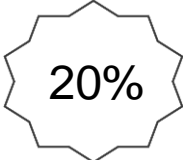





**CLIMATE
AND RISK**

Emission, Resilience



Award Levels

Recognition Level	Minimum Applicable Points	Minimum in Each Category
Bronze	 20%	No minimum category percentage required
Silver Award	 30%	
Gold Award	 40%	
Platinum Award	 50%	





The screenshot shows the ISI website homepage. At the top, there is a navigation bar with links for Home, About Us, Join ISI, Contact Us, Search, and a green Login button. The ISI logo is on the left, and a search box is on the right. Below the navigation bar is a dark blue banner with a high-speed train and the text "Building Tomorrow's Infrastructure Today". The main content area is divided into several sections: "Envision™ Rating System" with a "Click Here" button; "Envision™ Checklist" with a "Click Here to Download Checklist" button; "ISI Credential Application" with a brief description; "Accepted Applicants" with a brief description; "Envision Credentialed Professionals" with a "Click here to search" button; and a "Latest News" section with a list of articles. A large "VERIFICATION" banner is also present in the bottom left.

ISI INSTITUTE FOR SUSTAINABLE INFRASTRUCTURE

Home About Us Join ISI Contact Us Search Login

search

News FAQs Rating System ISI Credentials Project Application Education & Training ISI Blog Presentation Templates

Building Tomorrow's Infrastructure Today

Envision™ Rating System

[Click Here](#)

Envision™ Checklist

[Click Here to Download Checklist](#)

ISI Credential Application

Register here for the ISI Credential and Training Program. You must be registered and your application accepted to participate.

Accepted Applicants

If your ENV SP application has been accepted, login to the Portal to view the education modules and take the test. [Click here](#)

Envision Credentialed Professionals

[Click here to search for a credentialed ENV SP.](#)

Latest News

- [ISI has Large Presence at Ecobuild America...details](#)
- [Recognizing a Founder...details](#)
- [Easy Updating of Your ISI Information...details](#)
- [Faculty Discounts for Credentialing...details](#)
- [New Envision™ Presentation Templates...details](#)
- [Envision™ Checklist Now Available...details](#)
- [First Class of Verifiers Graduate...details](#)
- [Rebuilding America's Infrastructure...details](#)

ISI provides third-party project **VERIFICATION** for the **Envision™ Sustainable Infrastructure Rating System**

[Click here to find out more](#)



Questions

Amanda Campbell
acampbell@mwcog.org