

Benchmarking with EPA's Portfolio Manager[®]

Leslie Cook

*ENERGY STAR Public Sector Program Manager
U.S. Environmental Protection Agency (EPA)*



Learn more at energystar.gov

EPA's Portfolio Manager



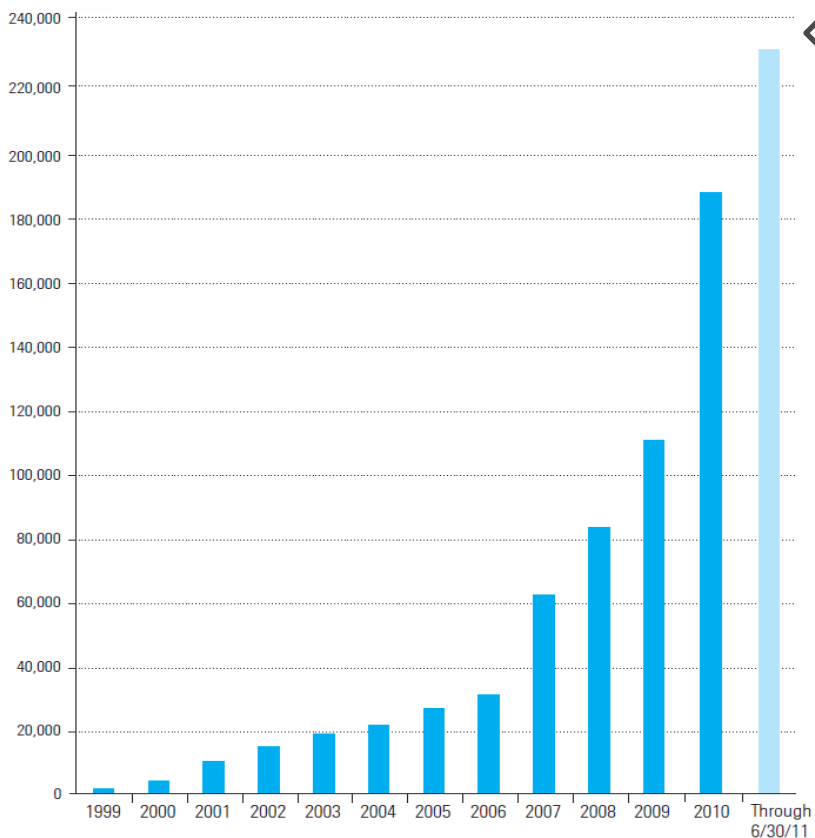
- Use EPA's Portfolio Manager tool to:
 - Benchmark the energy performance of any commercial or multifamily buildings
 - Receive an energy use intensity (EUI) for each building. Many buildings are eligible to receive energy performance scores on a 1-100 scale
 - Track changes in energy and water use over time in a building, groups of buildings, or entire portfolios
 - Track and report cost savings and GHG emissions
 - Apply for the ENERGY STAR

www.energystar.gov/benchmark

Benchmarking Activity in Portfolio Manager Continues to Increase

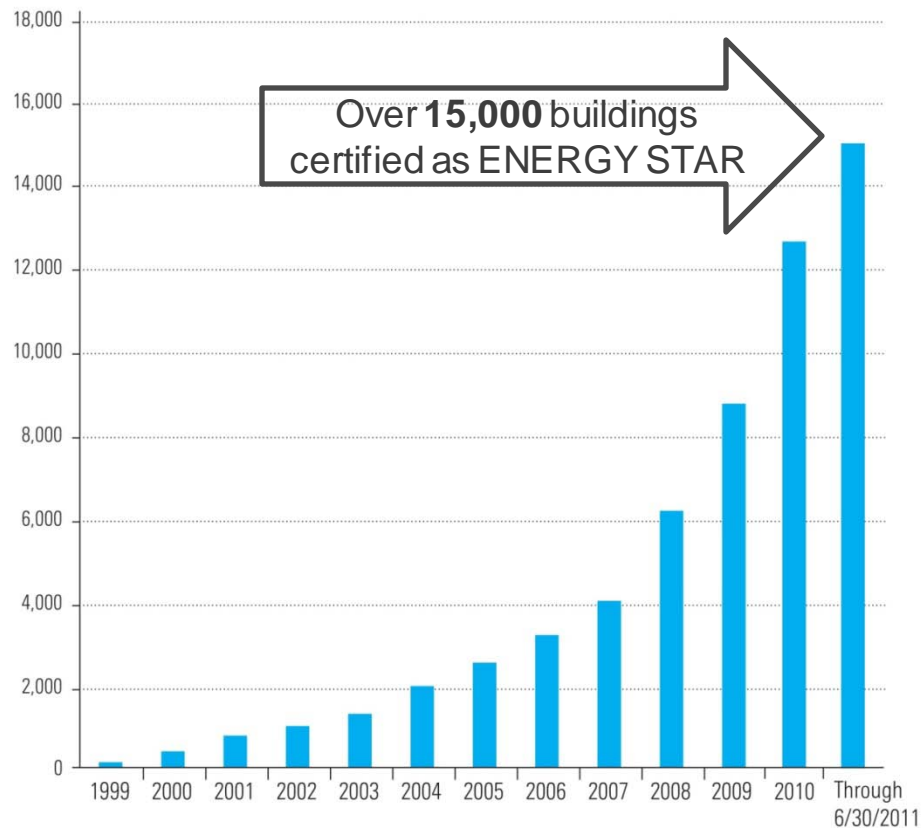


Commercial Buildings Benchmarked (cumulative)



Over **230,000** buildings benchmarked

ENERGY STAR Certified Buildings (cumulative)

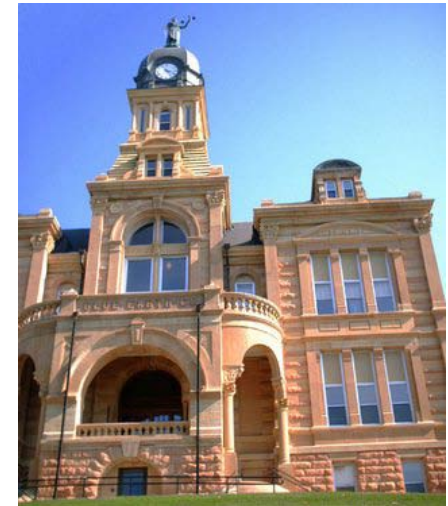


Over **15,000** buildings certified as ENERGY STAR

Benefits of Benchmarking with Portfolio Manager



- Enable portfolio-wide, continuous energy management strategy and reductions
- Verify pre- and post-project energy use, GHG emissions, and energy costs
- Identify under-performing facilities
- Assess effectiveness of current operations, policies and practices
- Assist in planning: set goals, targets, and timelines
- Set investment priorities
- Be more responsive to on-going issues
- Identify billing errors



www.energystar.gov/benchmark

Benefits of Benchmarking with Portfolio Manager: *Energy Management*



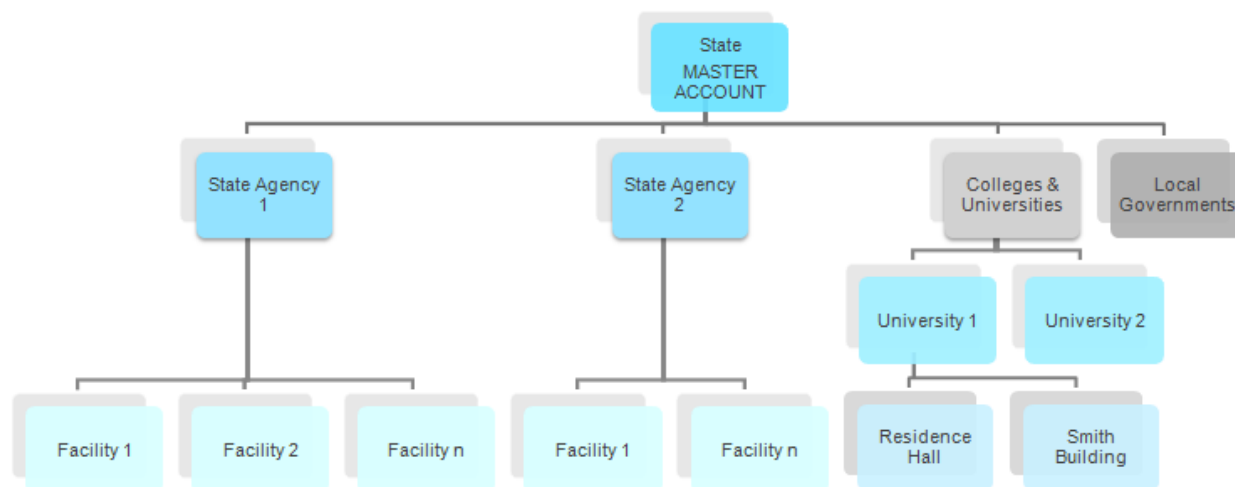
- Quantify benefits of building upgrades with whole building utility consumption data
- Verify O&M best practices among whole portfolio of properties
- Calculate and analyze key metrics including:

Whole Building Energy Use	Change from baseline: total energy use
	Weather-normalized energy use intensity (Kbtu/square foot)
	1-100 Energy Performance Score (where available)
Electricity	Electricity saved per year (kWh)
	% savings of kWh per year
Natural Gas	Natural gas savings per year (therms or CCFs)
	% savings natural gas per year
Other Key Metrics	Comparison to the national average (CBECS)
	Total on-site energy production
	Total green house gas emissions
	Energy cost (total and per square foot)

Benefits of Benchmarking with Portfolio Manager: *Data Sharing*



- One consistent tool provides an accessible, consistent measurement platform for EE programs (internal, external, local, national)
- Many data sharing options available:
 - Master Accounts
 - External Reporting / Data Requests



Sample Master Account Structure

Creating a Master Account



- **Purpose**

- Designed for users of Portfolio Manager that need to oversee or access large portfolios of buildings, which are typically managed by several different individuals or organizations.
 - Example: State or association tracking the success of an energy efficiency campaign with many different participants.

- **Process**

- Institution creates a Master Account
- Master Account appears in a public registry
- Individual users can share facilities with Master Account
- Master Account holder can view progress for all facilities that have been shared



For More Information:

Visit: www.energystar.gov/benchmark

If you have any questions, please contact:

Leslie Cook, US EPA
cook.leslie@epa.gov
(202) 343-9174
