

# Briefing on the Round 8.0 Cooperative Forecasts

TPB Technical Committee

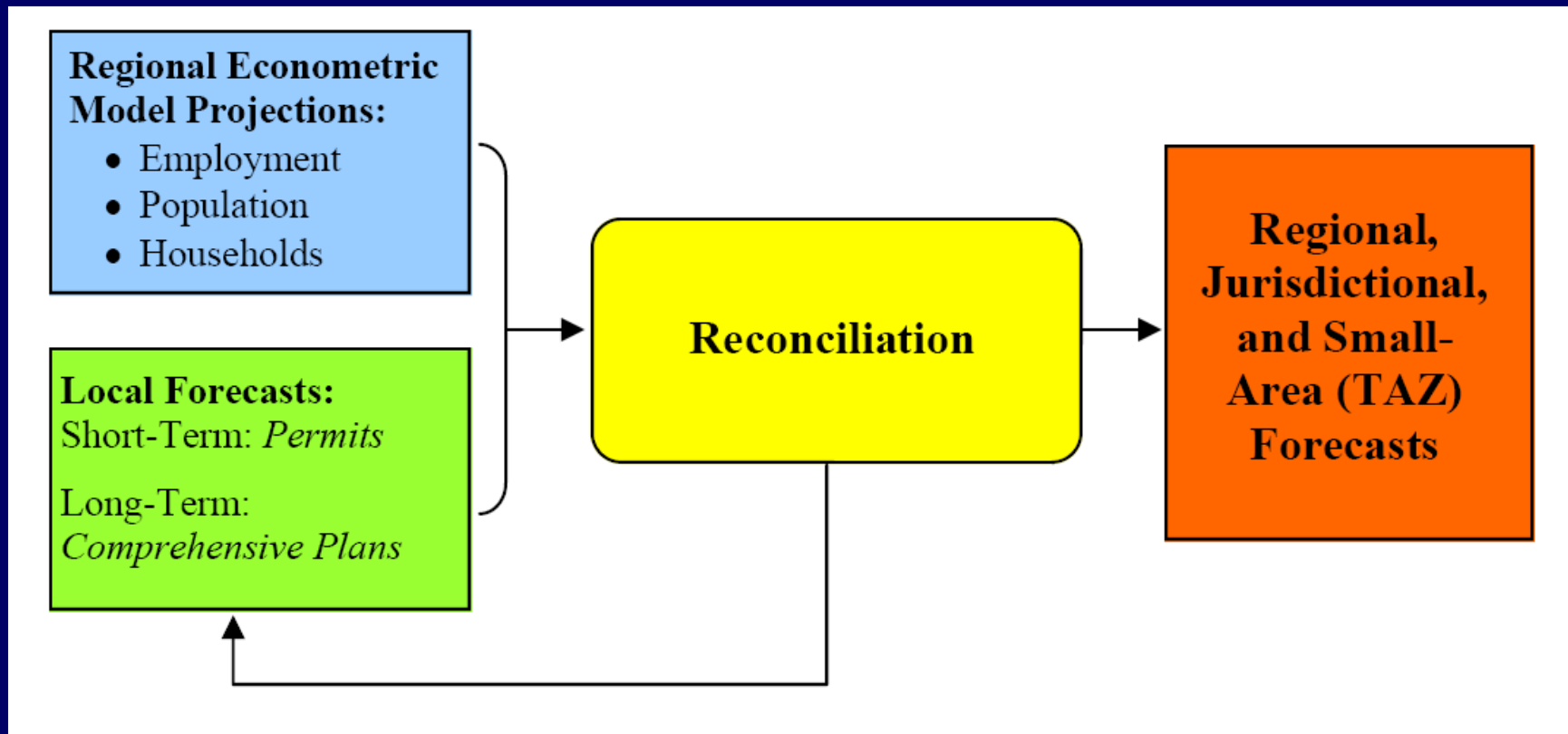
Paul DesJardin  
COG/DCPS Staff

September 3, 2010

# The Round 8.0 Cooperative Forecasts . . .

- . . . will be used in conjunction with the new Household Travel Survey and the new Transportation Model
- . . . include a new econometric benchmark forecasts based on revised assumptions of the U.S. economy.
- . . . include a new Traffic Analysis Zones (TAZs) structure (TPB TAZ 3,722) almost doubling the number of TAZs from the previous series.
- . . . are used in this year's Air Quality Conformity Analysis
- . . . will be the initial basis for the update to the COG Regional Activity Centers and Clusters.

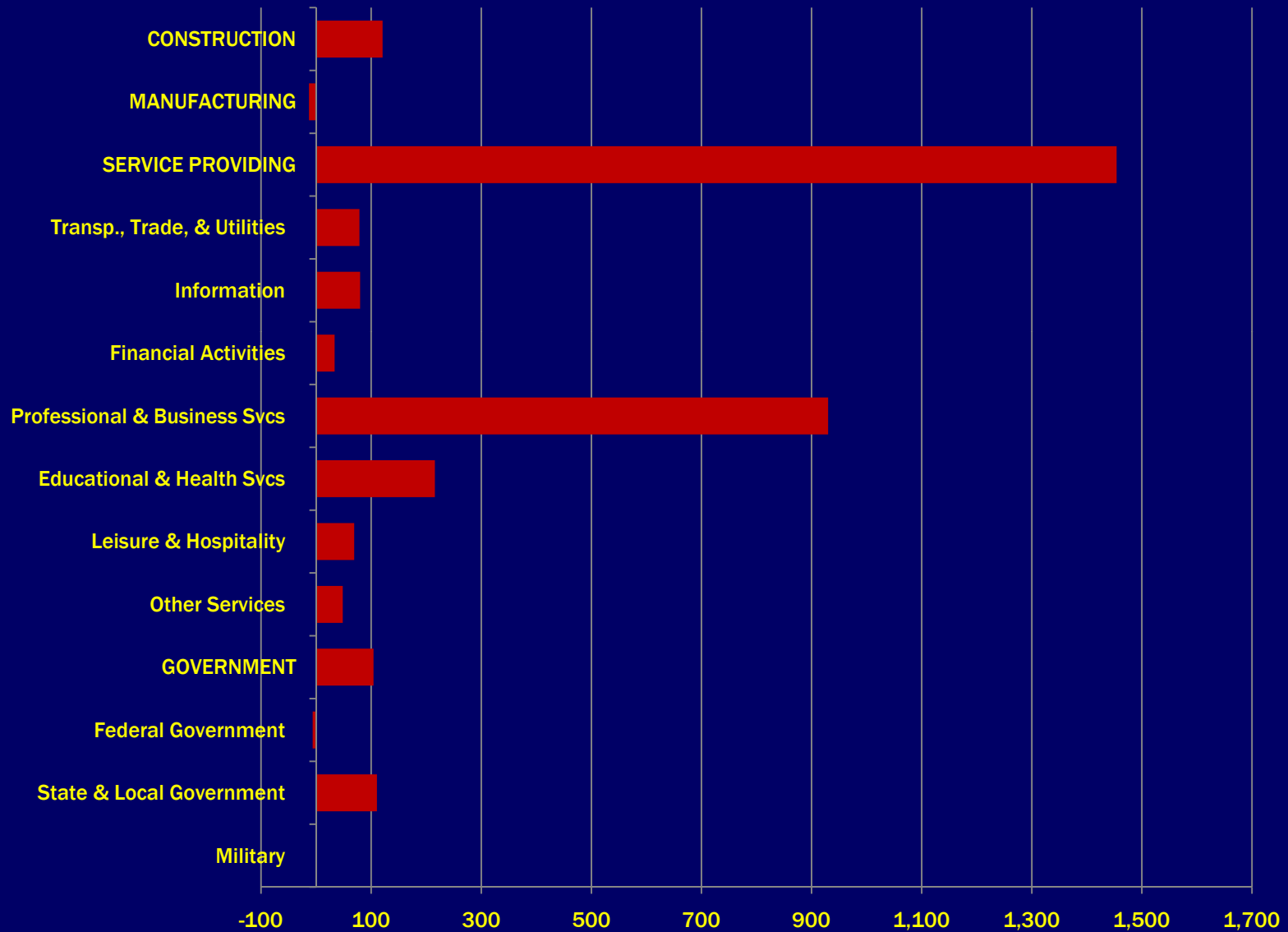
# Cooperative Forecasting Process



## Round 8 Cooperative Forecasts Key Factors

- Short-Term Forecasts Given Economic Cycle
- Long-range employment forecasts by NAICS from Global Insight
- Employment / Household Relationship including in-commuting

## Forecast 2005 to 2040 Job Growth by Sector in Metropolitan Washington (Thousands of Jobs)



## Employment/Households

- Scenario 1 – Adjust Households and Population in Later Years, Not Enough Households to Supply Workers for Projected Jobs – Implies Significant In-Commuting. Household Growth Constrains Potential Job Growth (“Household-Constrained Scenario”)
- Scenario 2 – Employment is the Driver, and More Households Needed to Provide the Workers for the Jobs (“Employment-Driven Scenario”)

For both Scenarios,  $E/HH = 1.70$  is Assumed  
In Adjusting the Forecasts

# Key Findings and Trends

# Employment Comparison Throughout Forecast Period

TPB Model Region

EMPLOYMENT (Thousands)

	2005	2010	2015	2020	2025	2030	2035	2040
Round 7.2A	3,785.4	4,079.8	4,406.2	4,740.2	5,025.0	5,272.3	5,465.8	5,656.8
Round 8.0	3,780.3	4,012.2	4,301.4	4,640.6	4,921.3	5,159.9	5,374.5	5,560.5
Change (#)	-5.1	-67.6	-104.7	-99.5	-103.7	-112.4	-91.3	-96.3
Percent Change (%)	-0.1%	-1.7%	-2.4%	-2.1%	-2.1%	-2.1%	-1.7%	-1.7%
	↓	↓	↓	↓	↓	↓	↓	↓



# Household Comparison

## Throughout Forecast Period

TPB Model Region

HOUSEHOLDS (Thousands)

	2005	2010	2015	2020	2025	2030	2035	2040
Round 7.2A	2,340.4	2,520.5	2,714.3	2,896.0	3,049.4	3,182.9	3,299.3	3,408.0
Round 8.0	2,344.5	2,488.2	2,668.1	2,838.5	2,996.9	3,134.3	3,254.5	3,359.7
Change (#)	4.2	-32.3	-46.2	-57.5	-52.5	-48.6	-44.8	-48.3
Percent Change (%)	0.2% ↑	-1.3% ↓	-1.7% ↓	-2.0% ↓	-1.7% ↓	-1.5% ↓	-1.4% ↓	-1.4% ↓

# Key Trends in Employment Forecasts for Round 8.0

## TPB Model Region

### Sub-region and Jurisdictional Level

- 1.8 million jobs forecast between 2005 and 2040
- Central Jurisdictions will add +367,800 (35%)
- Inner Suburbs will add +627,900 (42%), and
- Outer Suburbs will add +433,800 (84%).
- Job growth in Northern Virginia (61%) will outpace growth anticipated Suburban Maryland (42%), and the District of Columbia (30%).
- Fairfax County, the District of Columbia, and Montgomery County would add the largest numbers of new jobs to the region, followed by Loudoun and Prince William Counties.

### Comparisons between Round 7.2A and Round 8.0 for 2040

- District of Columbia increased employment by +17,900 in 2040.
- Prince George's County reduced by -49,700
- Anne Arundel County -27,200
- Loudoun County reduced by -19,500
- Prince William County decreased -4,500

# Key Trends in Household Forecasts for Round 8.0

## TPB Model Region

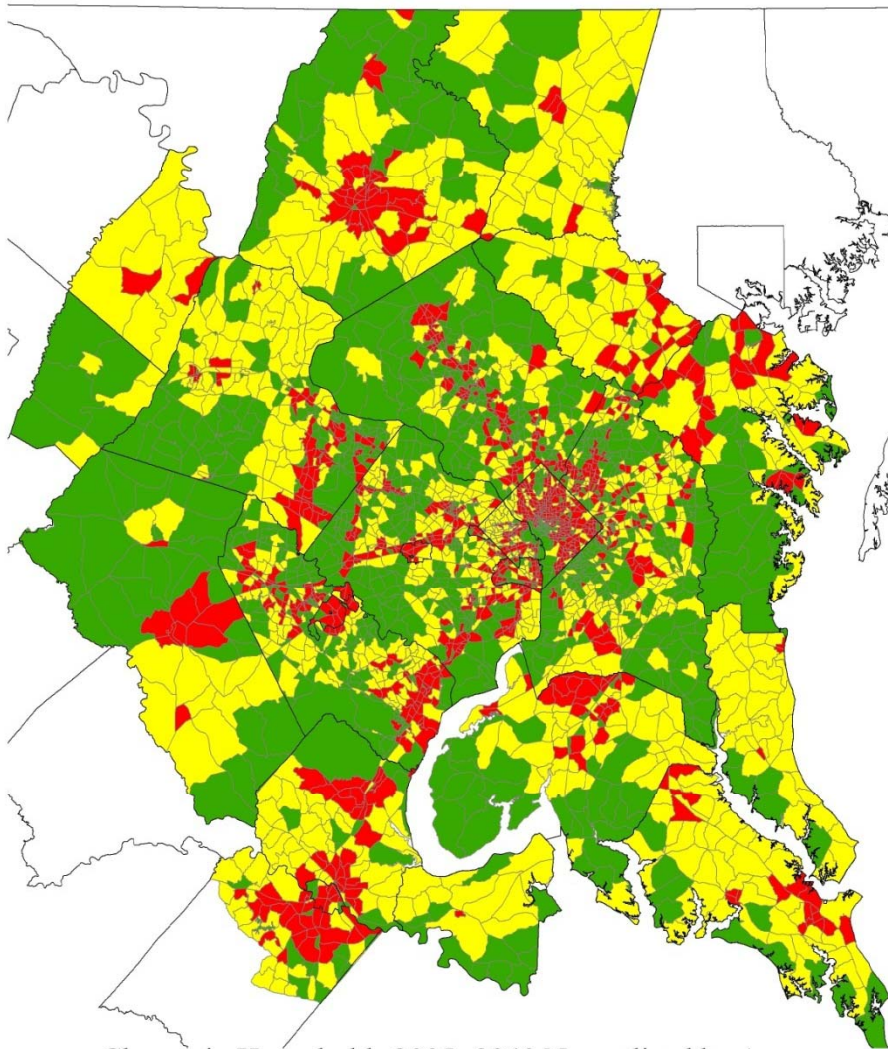
### Sub-region and Jurisdictional Level

- 1 million households projected between 2005 and 2040
- Central Jurisdictions will add +141,800 (+34%)
- Inner Suburbs +287,000 (+28%)
- Outer Suburbs +334,800 (+81%).
- Growth in Northern Virginia (+48%) will outpace Suburban Maryland (+36%), and the District of Columbia (34%).
- Montgomery County, Fairfax County, Prince William County would add the largest numbers of new households, followed by the District and Loudoun County.

### Comparisons between Round 7.2A and Round 8.0 for 2040

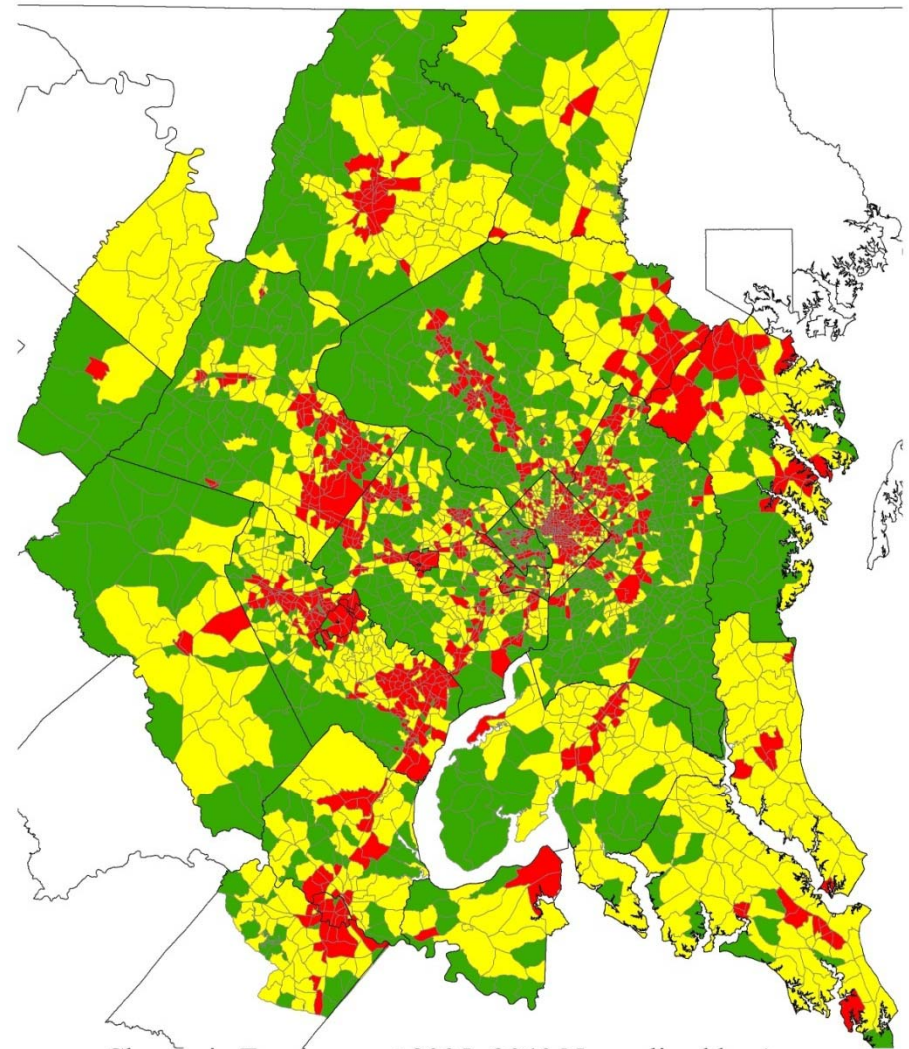
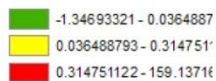
- District of Columbia decreased households by -21,000 in 2040.
- Prince George's County reduced by -20,300,
- Montgomery County increased +3,000
- Fairfax County decreased by -2,900
- Loudoun County reduced by -6,400

# Growth in Households and Employment



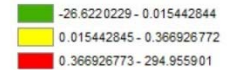
Change in Households 2005- 2040 Normalized by Acre

Round 8 Data  
In Round 8 TAZs

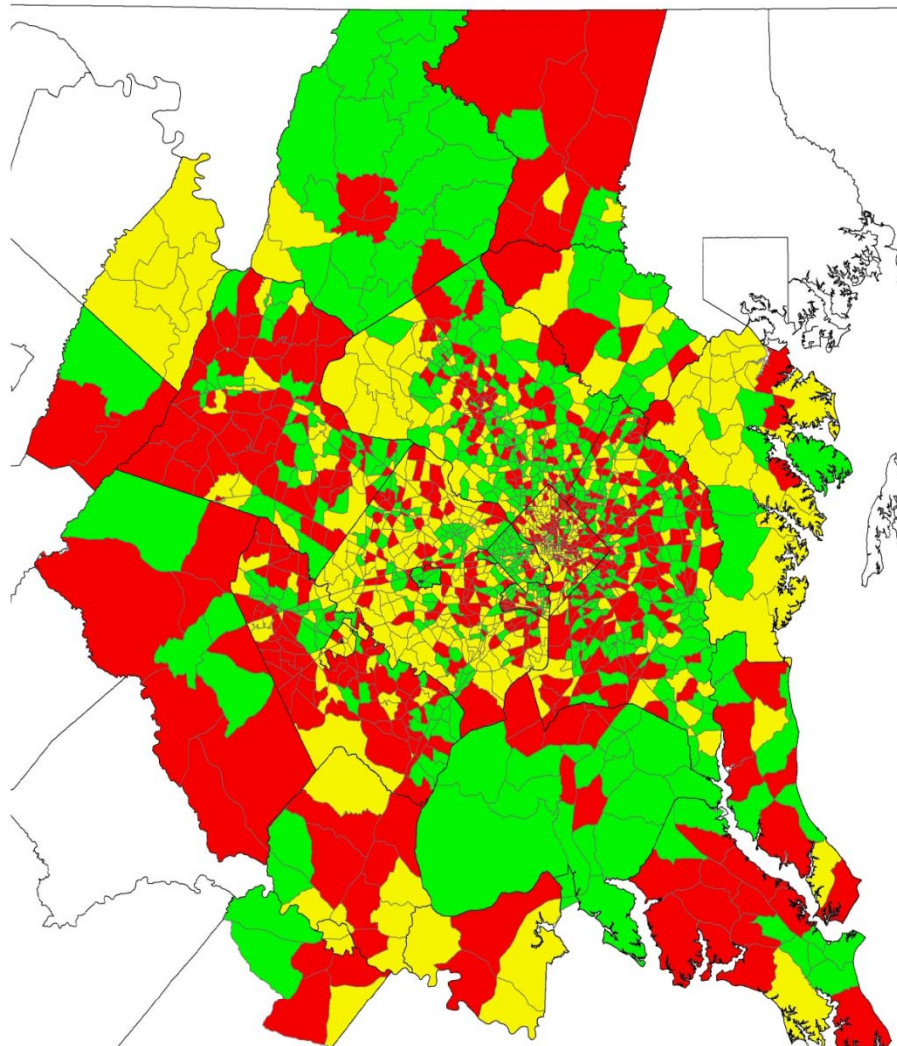


Change in Employment 2005- 2040 Normalized by Acre

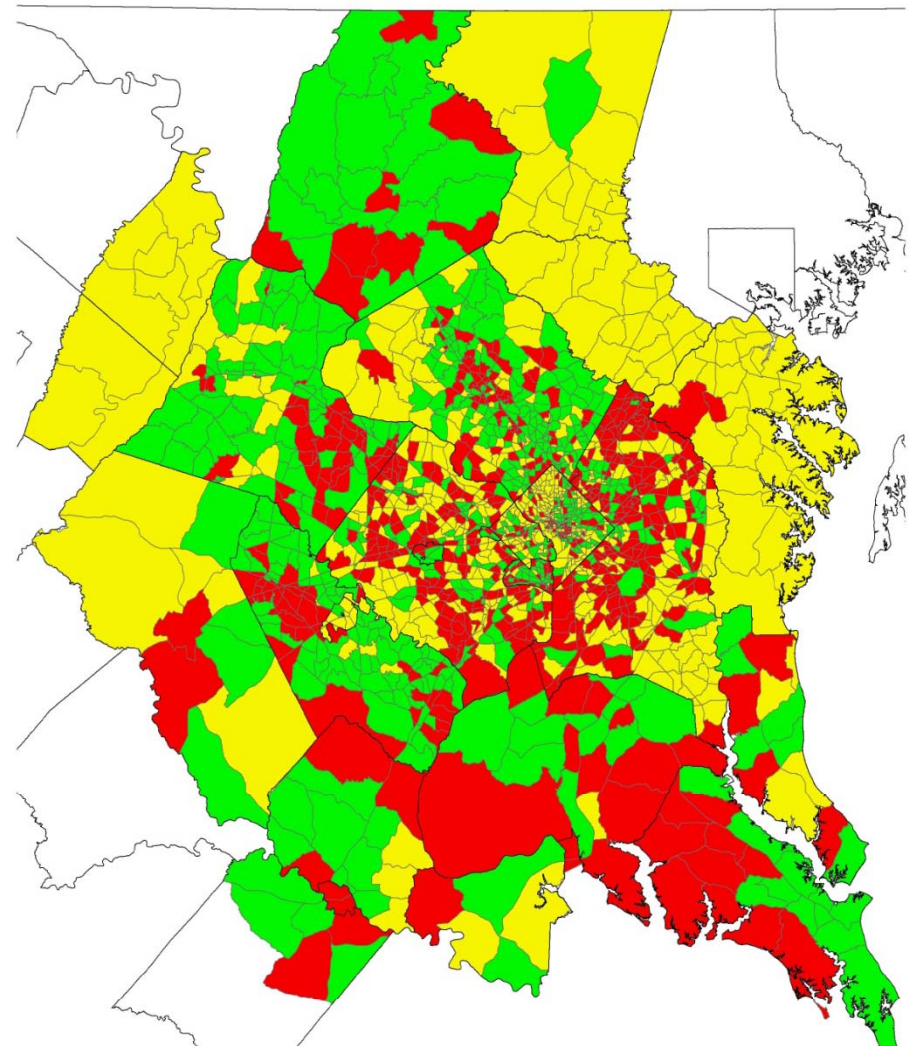
Round 8 Data  
In Round 8 TAZs



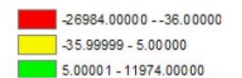
# Change in 2040 Households and Employment



Change in Households 2040 Treciles  
Round 7.2a to Round 8  
In Round 7.2a TAZs



Change in Employment 2040 Treciles  
Round 7.2a to Round 8  
In Round 7.2a TAZs



Questions . . .