

Forecasted Urban Growth in the Chesapeake Bay Watershed (2002 to 2030)



Chesapeake Bay Watershed

Counties

Chesapeake Bay

Phase 5 Watershed Modeling Segments

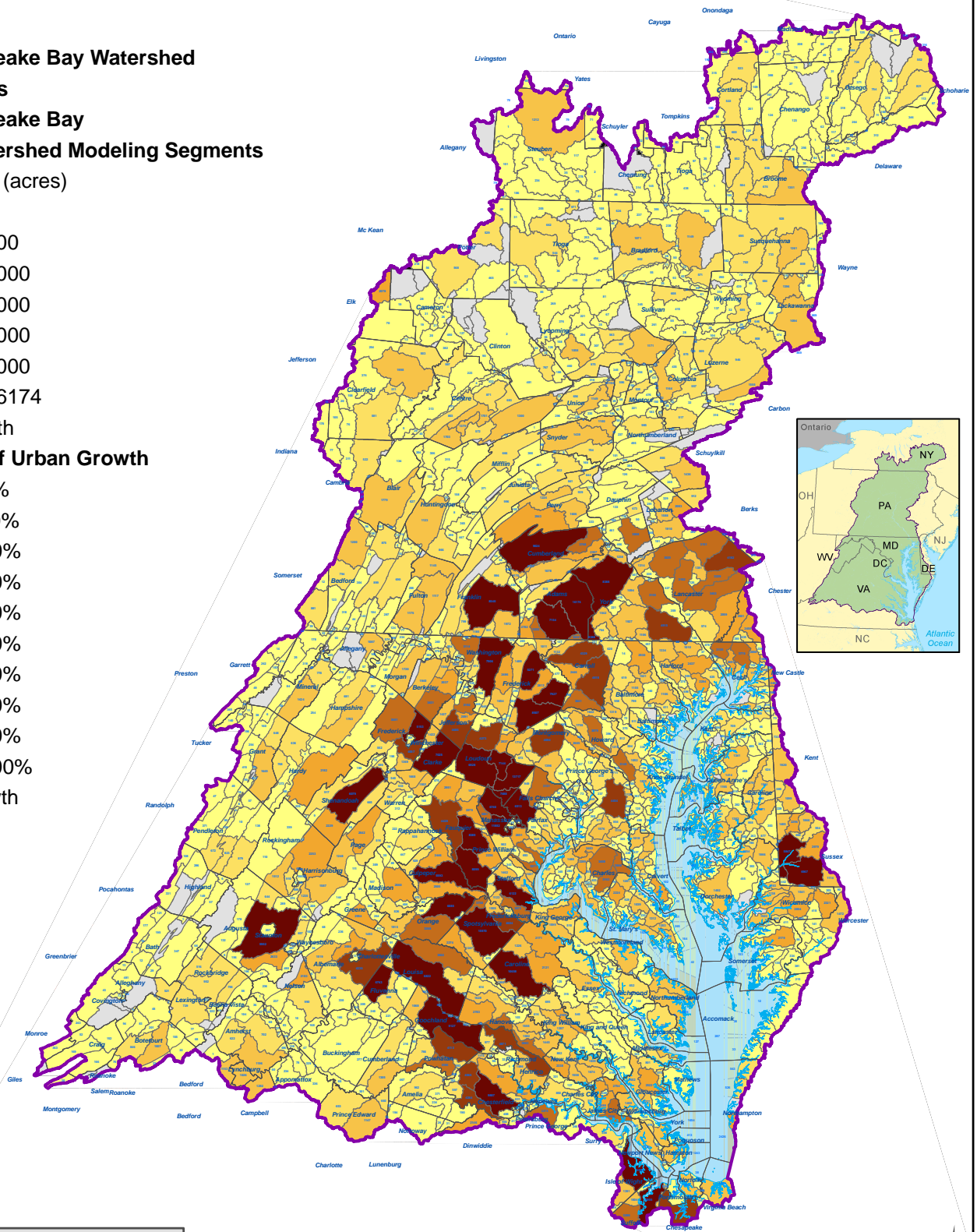
Urban growth (acres)

- 1 - 500
- 501 - 1000
- 1001 - 2000
- 2001 - 3000
- 3001 - 4000
- 4001 - 5000
- 5001 - 16174

No growth

Probability of Urban Growth

- 4% - 10%
- 11% - 20%
- 21% - 30%
- 31% - 40%
- 41% - 50%
- 51% - 60%
- 61% - 70%
- 71% - 80%
- 81% - 90%
- 91% - 100%
- No Growth



Data Sources: Chesapeake Bay Program
 For more information, visit www.chesapeakebay.net
 Disclaimer: www.chesapeakebay.net/termsfuse.htm

