

VRE AT 25

A QUARTER CENTURY OF SERVICE

National Capital Region
Transportation Planning Board
July 19, 2017



A BETTER WAY. A BETTER LIFE.



WHAT WE ARE

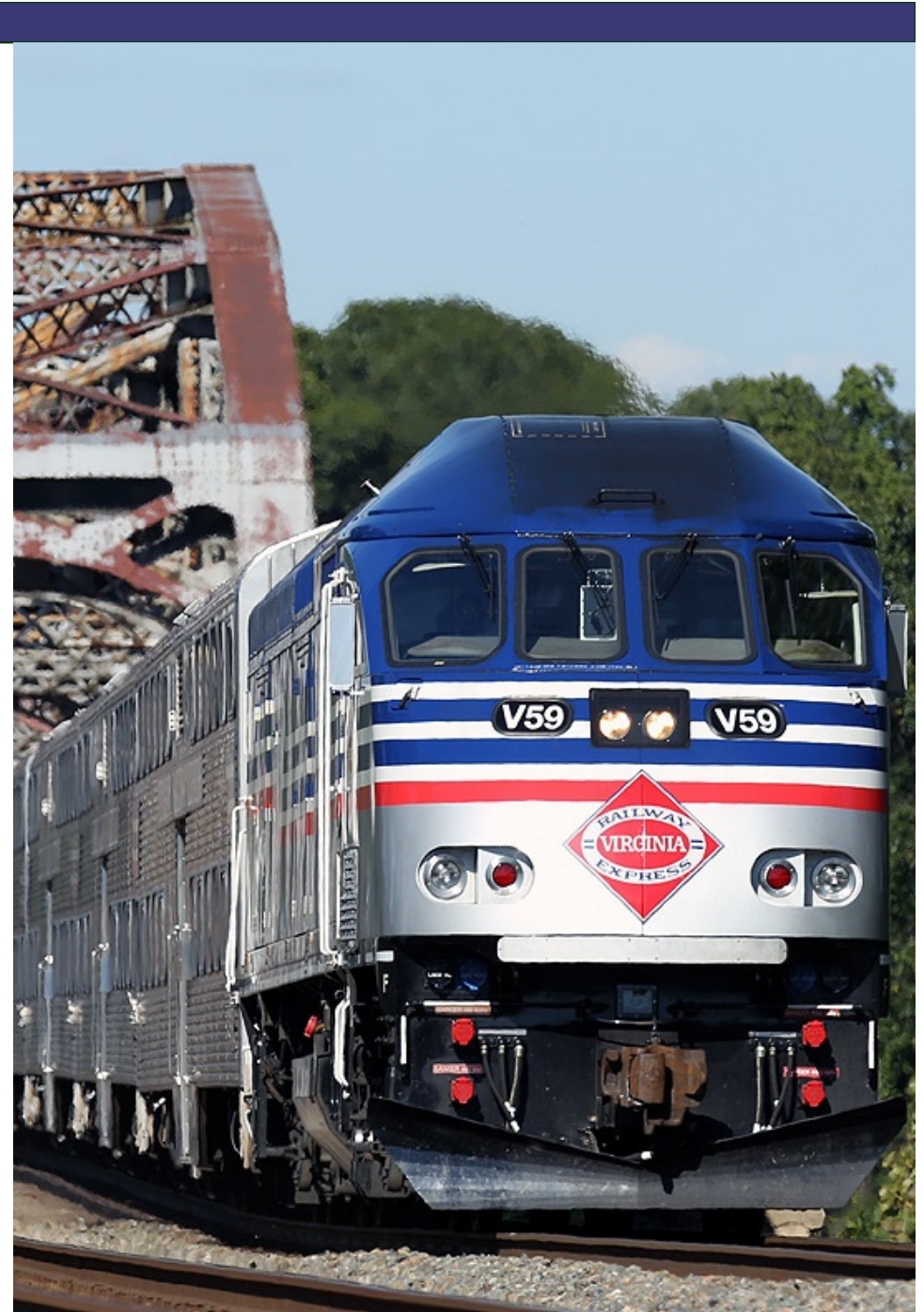
- Virginia Railway Express is a “joint project” of the:
 - Northern Virginia Transportation Commission



- Potomac & Rappahannock Transportation Commission



VIRGINIA RAILWAY EXPRESS



WHO WE ARE

A commuter rail system

Running on existing railroad tracks

Serving Washington DC and
Northern Virginia

*Carrying long-distance commuters
to DC, Arlington & Alexandria*

Two lines, 96 miles

*Adding peak capacity to
I-95, I-395 & I-66 corridors**

19,500 daily trips

*Commuters that would
otherwise drive alone in cars**



VIRGINIA RAILWAY EXPRESS



REGIONAL COLLABORATION

WMATA Metrorail

*Expands the reach of VRE rail
Used by 17% of VRE riders*

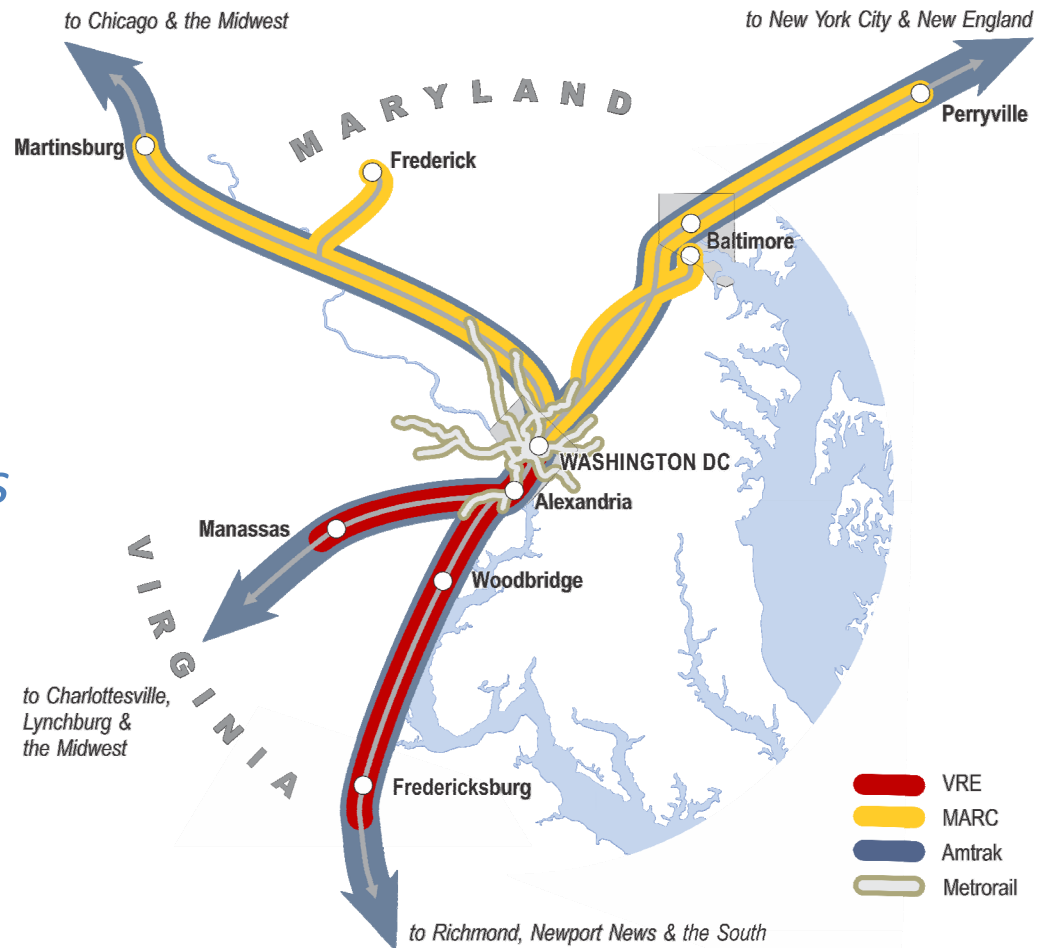
Amtrak Virginia Trains

*Step-Up fares available
Faster ride option for longer trips*

MTA/MARC Train Service

*Fare Integration
Exploring Opportunities for
Through Running*

***Infrastructure improvements
needed for further growth***



VIRGINIA RAILWAY EXPRESS

WHAT WE ARE KNOWN FOR

Safe Operations

Quality Service

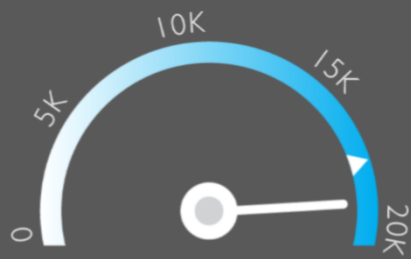
Reliable Service

High Customer
Satisfaction

Strong Partnerships
with Host Railroads



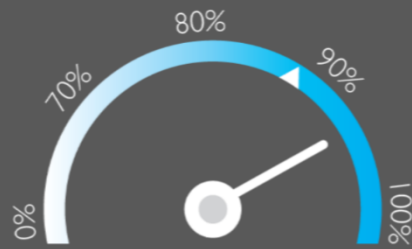
VIRGINIA RAILWAY EXPRESS



AVERAGE DAILY RIDERSHIP

The average number of boardings each operating day inclusive of Amtrak Step-Up boardings but excluding "S" schedule operating days.

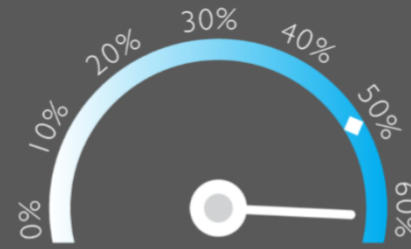
▲ Same month, previous year.



ON-TIME PERFORMANCE

Percentage of trains that arrive at their destination within five minutes of the schedule.

▲ Same month, previous year.

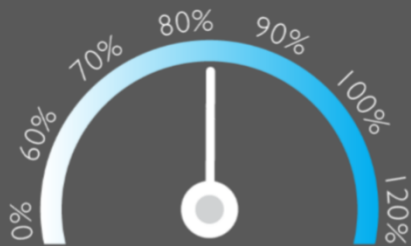


OPERATING RATIO

The monthly operating revenues divided by the monthly operating expenses, which depicts the percent of operating costs paid by riders.

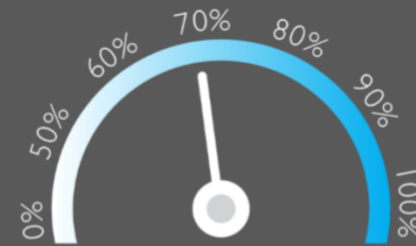
◆ Board-established goal.

VRE MEASURES OF SUCCESS



SYSTEM CAPACITY

The percent of peak hour train seats occupied. The calculation excludes reverse flow and non-peak hour trains.



PARKING UTILIZATION

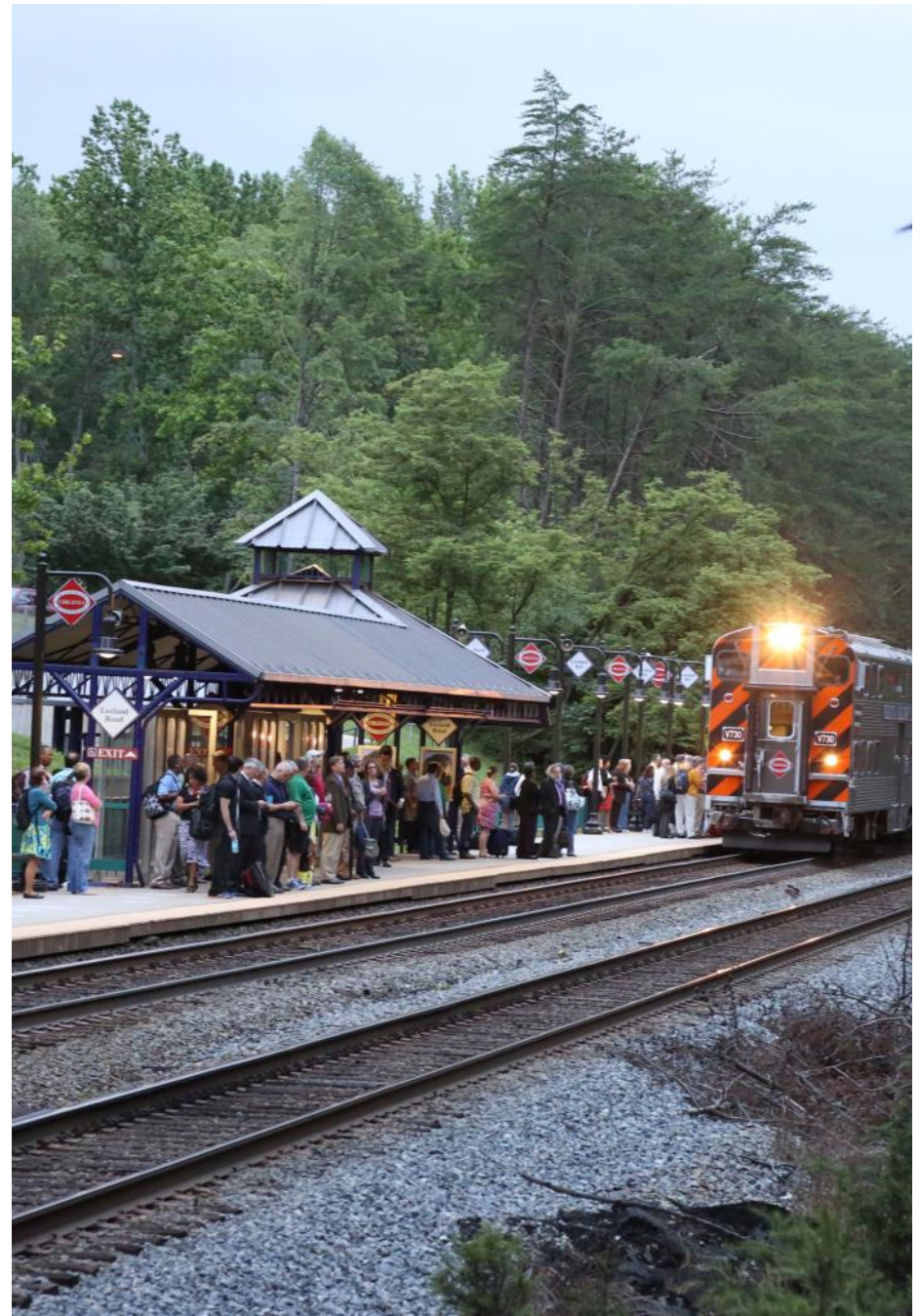
The total number of parking spaces used in the VRE system during the month, divided by the total number of parking spaces available.



VIRGINIA RAILWAY EXPRESS

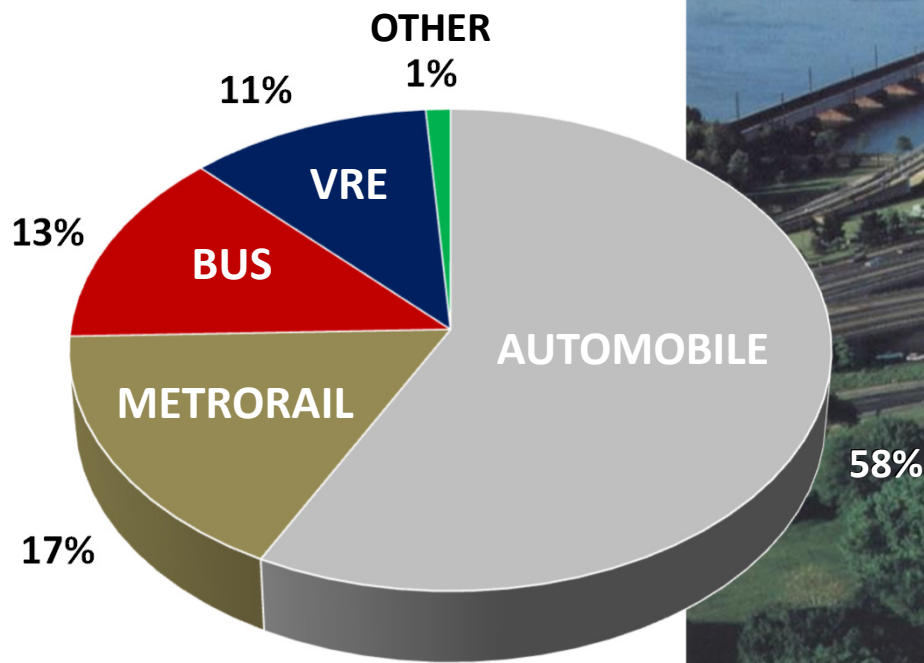
OUR IMPORTANCE TO THE CAPITAL REGION

- Part of a balanced system
- Reduces peak congestion
- Cost-effective means of adding peak capacity
- Maximize economic competitiveness of the National Capital region



VIRGINIA RAILWAY EXPRESS

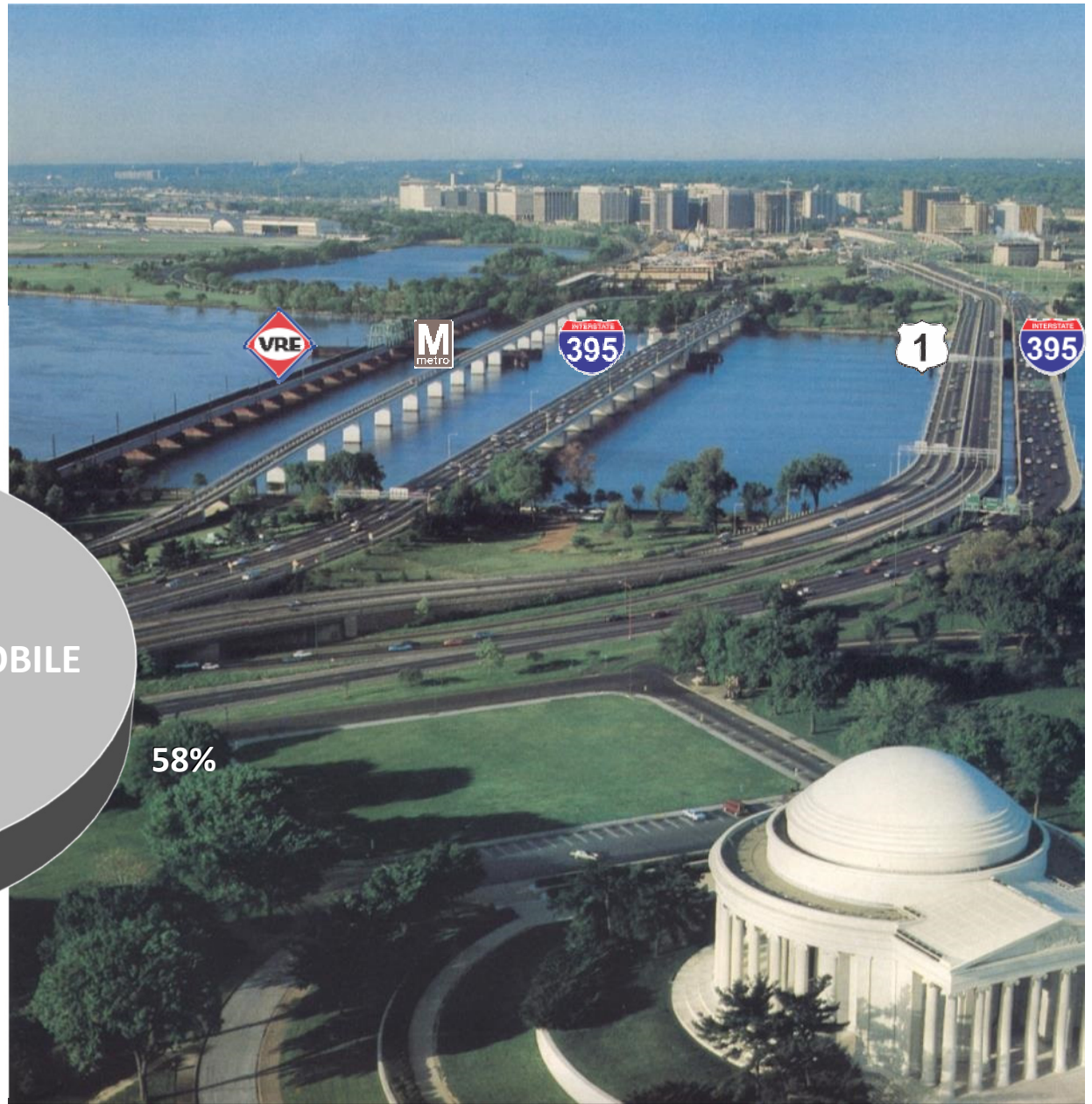
Peak Hour Trips from Virginia to DC across the 14th Street Bridges (6:30 to 7:30 AM)

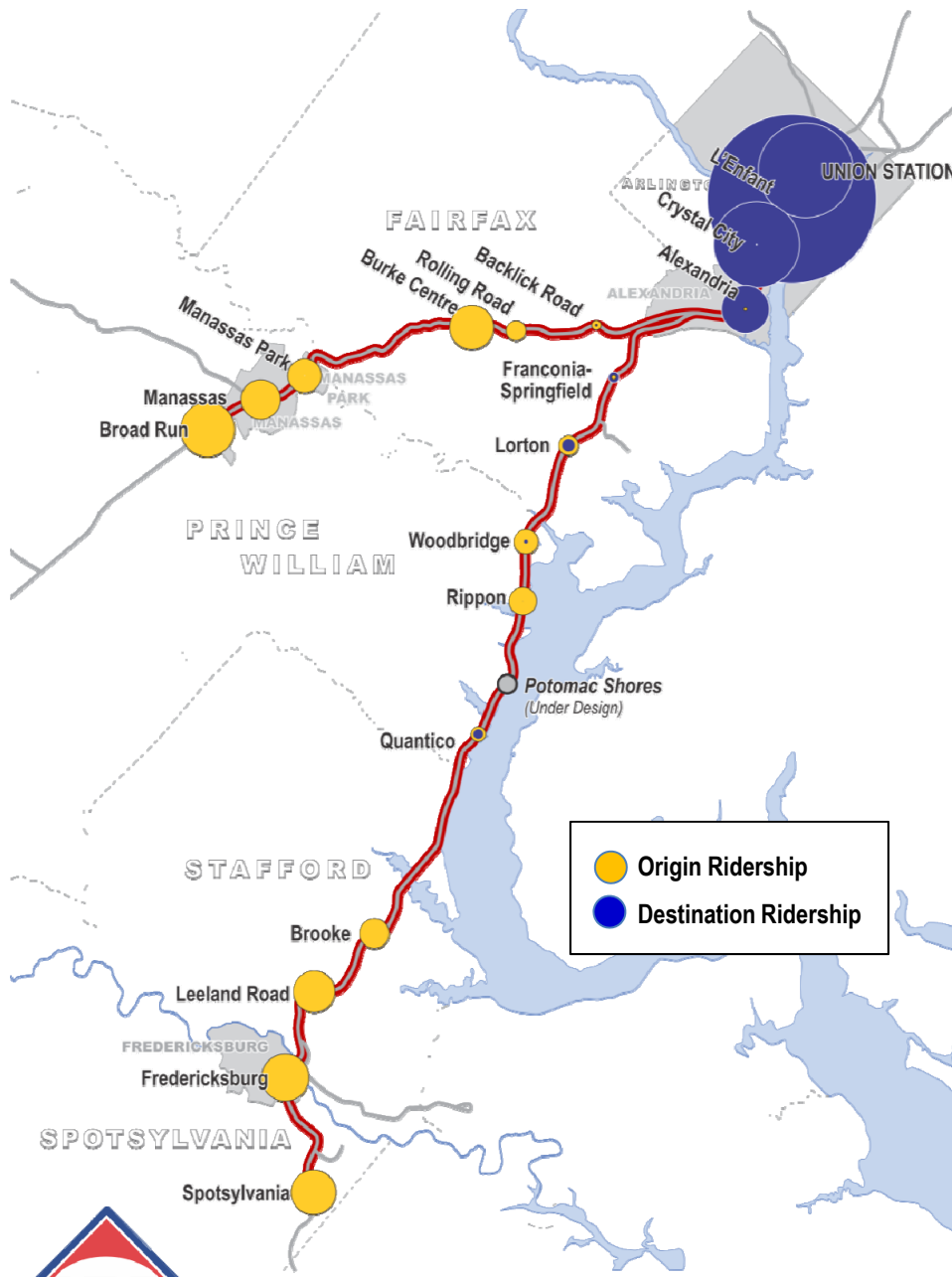


21,934 TOTAL TRIPS



VIRGINIA RAILWAY EXPRESS



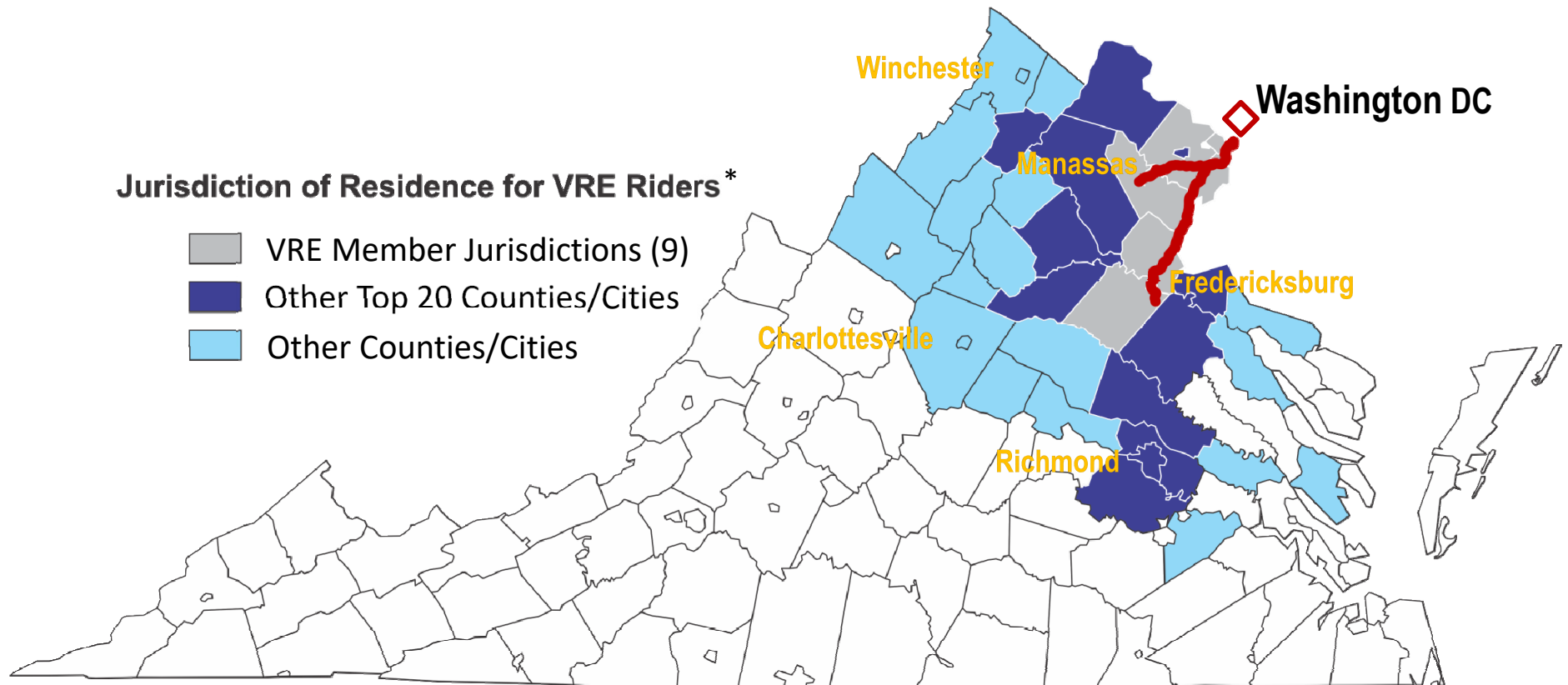


VIRGINIA RAILWAY EXPRESS

WHERE OUR RIDERS GO

- L'Enfant busiest station
 - Primary destination
 - Nearby offices
 - Metro connections
- Crystal City, Union Station & Alexandria
 - Next three busiest destinations
- Busiest origin stations are at the end of lines
 - Big park-ride lots
 - Most VRE passengers have a car available*

On a typical weekday VRE draws ridership from 39 Virginia Jurisdictions



VIRGINIA RAILWAY EXPRESS



VRE SYSTEM PLAN 2040

Provide capacity improvements for ridership growth

PHASE 1: *Run Longer Trains*

- More railcars
- More station parking
- More train storage tracks
- Second & longer platforms

PHASE 2 & 3: *Run More Trains*

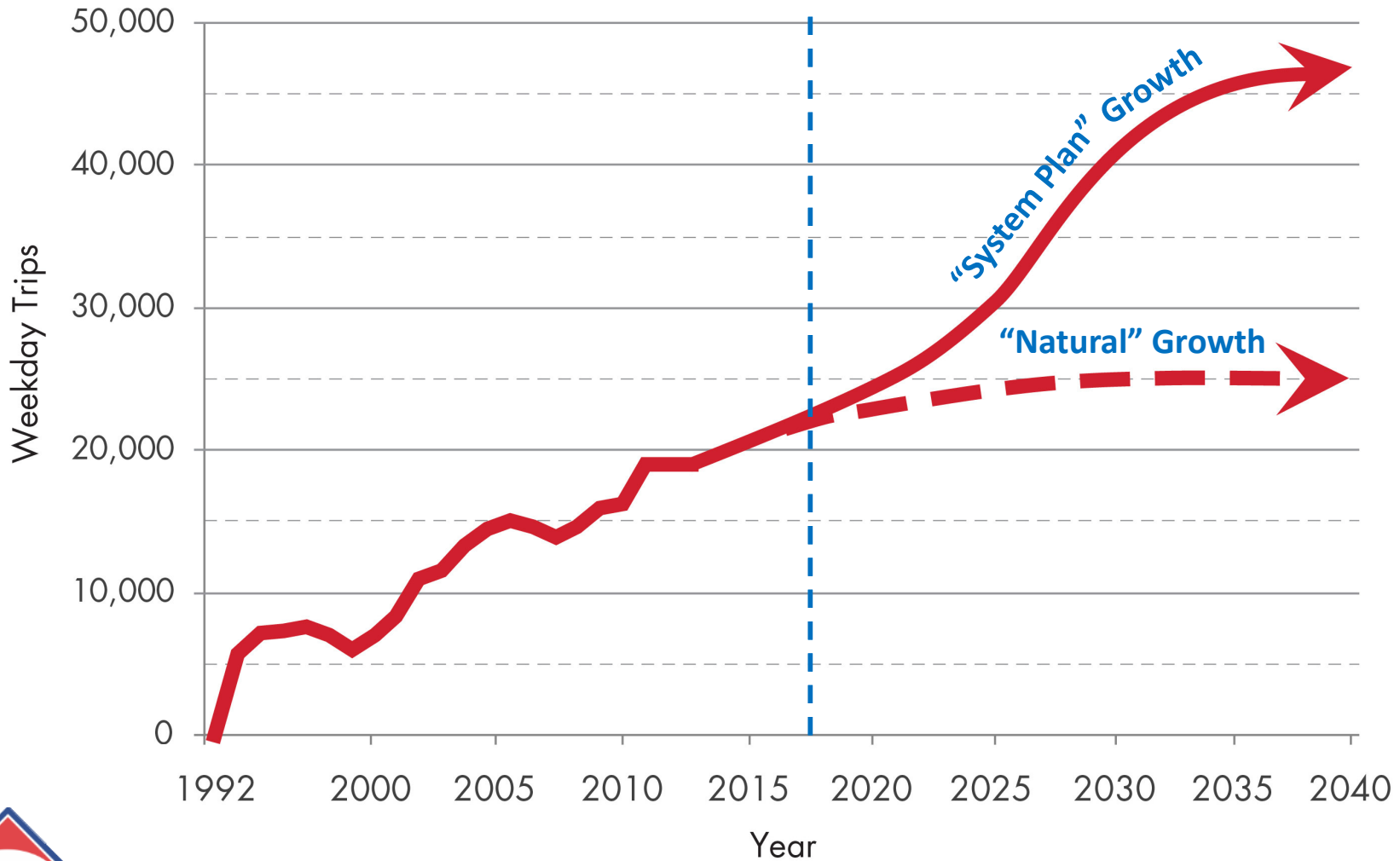
- Earn additional slots through capacity improvements
 - Additional CSXT tracks
 - Long Bridge (core) Expansion
 - More parking, railcars, yards



VIRGINIA RAILWAY EXPRESS

POTENTIAL FOR GROWTH

System Plan 2040 Goal: more than double VRE ridership

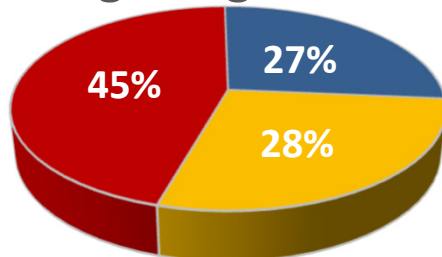


VIRGINIA RAILWAY EXPRESS

LONG BRIDGE EXPANSION PROJECT



Long Bridge Traffic



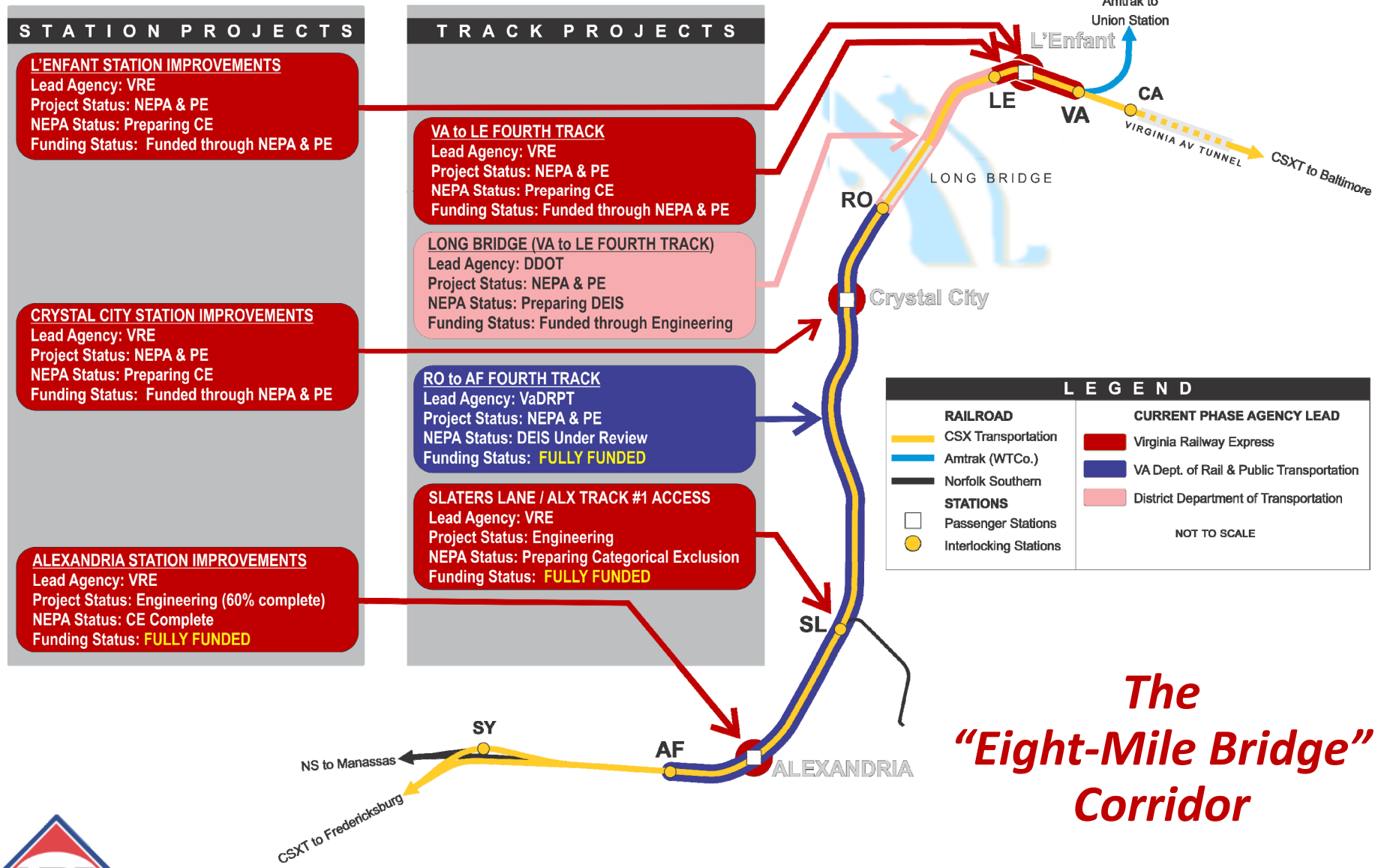
■ CSXT ■ VRE ■ Amtrak



VIRGINIA RAILWAY EXPRESS

- Expand capacity from two to four tracks
 - Between LE (L'Enfant) to RO (Rosslyn) Interlockings
 - Six separate bridges spread over 1.4 miles
 - Benefits passenger and freight rail
 - Necessary for more commuter train service (VRE & MARC)
- PE & NEPA funded through USDOT TIGER grant
- Engineering funded through *Atlantic Gateway*

LONG BRIDGE CORRIDOR PROGRAM



*The
"Eight-Mile Bridge"
Corridor*

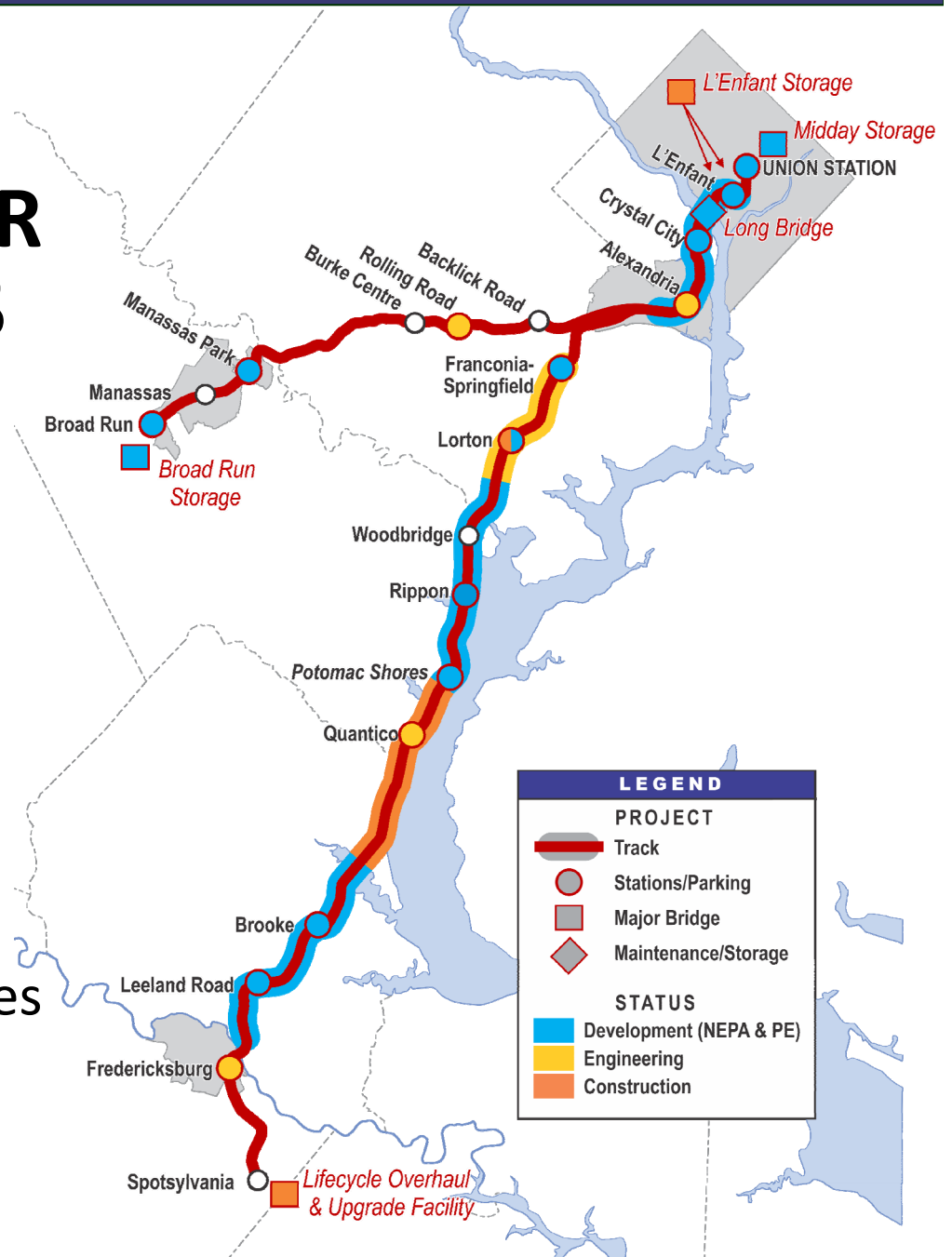


VIRGINIA RAILWAY EXPRESS



ACTIVE CORRIDOR PROJECTS

- Stations & Parking
11 projects in NEPA/PE
4 projects in Engineering
1 project in Construction
- Additional (3rd/4th) Tracks*
26 miles in NEPA/PE
9 miles in Engineering
9 miles in Construction
- Maintenance/Storage Facilities
2 projects in NEPA/PE
3 projects in Construction



VIRGINIA RAILWAY EXPRESS

* Includes track projects led wholly or in part by the Virginia Department of Rail & Public Transportation

VRE & TPB

- TPB advocacy and support for VRE projects is vital
- Priority to VRE projects of regional significance
 - Long Bridge Corridor
The “Eight-Mile Bridge”
 - Regional rail service
Off-peak/reverse-peak
 - Dedicated funding for capital & operating costs

We look forward to 25 years of continued collaboration



VIRGINIA RAILWAY EXPRESS



Doug Allen
Chief Executive Officer
Virginia Railway Express
703 838 5411
DALLEN@VRE.ORG



A BETTER WAY. A BETTER LIFE.