

IMPROVING WALK AND BIKE ACCESS TO TRANSIT

TPB's Transportation Land-Use Connections Program

Nicole McCall
Regional Planner

TLC Peer Exchange
May 10, 2018



National Capital Region
Transportation Planning Board

TLC Program

- Technical Assistance:



11 years

Began as a pilot program in 2007



108 projects

Across metropolitan Washington



\$4.1 million

Funded by Transportation Planning Board

- Transportation Alternatives Program/ (Surface Transportation Block Grant Program Set-Aside): Collaboration with State Departments of Transportation



\$35.7 million

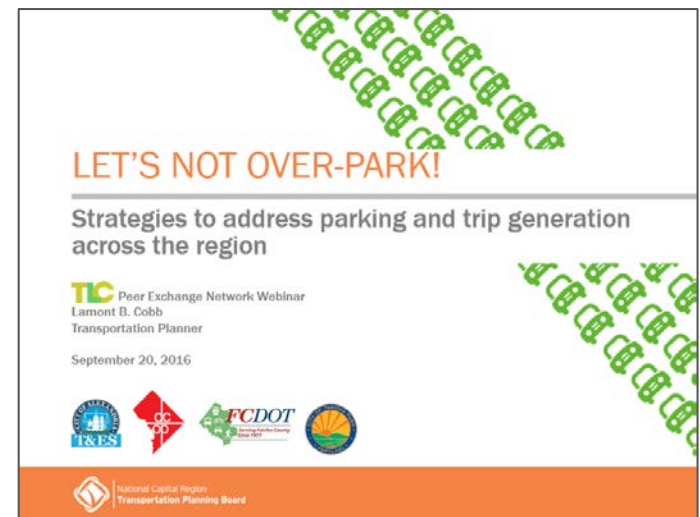
Funded by Transportation Planning Board since 2012

- Peer Exchange Network



Peer Exchange Network

- Share results of past technical assistance projects
- Provide opportunities for networking and information exchange
- Events, forums, workshops
- 2012 -2018 webinars on TLC projects

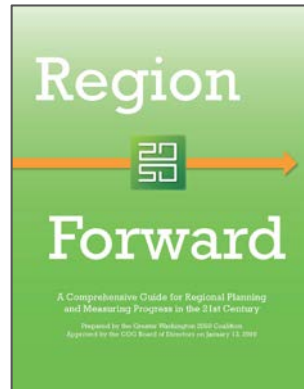


Regional Goals, Targets, and Initiatives



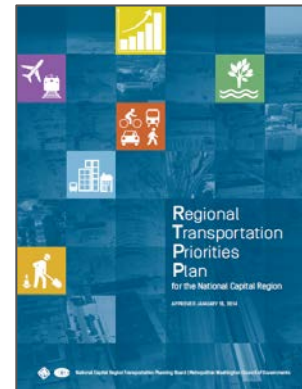
TPB Vision (1998)

- Make transportation facilities “safer, more accessible, and less intimidating for pedestrians, bicyclists, and persons with special needs.”
- Create and implement a regional Bicycle and Pedestrian Plan



Region Forward (2010)

- Increase rate of construction of bike/ped facilities from the TPB’s Plan
- Increase share of walk, bike, and transit trips
- Reduce the number of ped/bike fatalities across the region



Regional Transportation Priorities Plan (2014)

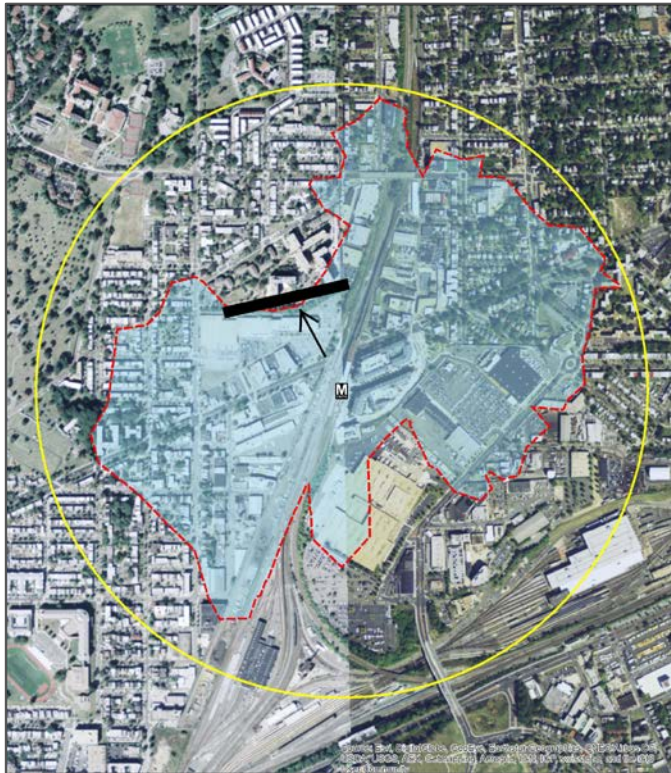
- Expand pedestrian and bicycle infrastructure throughout the region
- Better walk/bike access to transit
- Focus growth in walkable, bikeable Activity Centers



Non-Motorized Priority Initiatives (2018)

- Completion of the National Capital Trail
- Improve bike/ped access to high-capacity transit stations

Improve Walk and Bike Access to Transit



Source: Rhode Island Avenue – A Opportunity to Truly Connect Communities (WMATA PlanItMetro)

Current walk shed of Rhode Island Ave station, with illustration of the retaining wall.



Potential walk shed of Rhode Island Ave station with connection created through the retaining wall.



New Long-Range Plan and Endorsed Initiatives

- FINANCIALLY
CONSTRAINED ELEMENT

- ASPIRATIONAL ELEMENT



- Bring jobs and housing closer together
- Expand BRT regionwide
- Move more people on Metrorail
- Provide more telecommuting and other options for commuting
- Expand the express highway network
- Improve walk and bike access to transit
- Complete the National Capital Trail



New Long-Range Plan and Endorsed Initiatives

- FINANCIALLY
CONSTRAINED ELEMENT

- ASPIRATIONAL ELEMENT

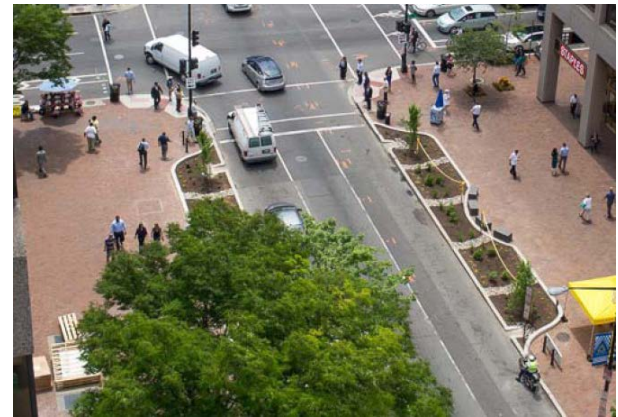


- Bring jobs and housing closer together
- Expand BRT regionwide
- Move more people on Metrorail
- Provide more telecommuting and other options for commuting
- Expand the express highway network
- Improve walk and bike access to transit
- Complete the National Capital Trail



Support with Walk and Bike Access to Transit with TLC

- Use as a factor in selecting projects for the TLC technical assistance and the Transportation Alternatives Program
- Promote implementation at the local level



Nicole McCall

Regional Planner
(202) 962-3341
nmccall@mwcog.org

mwcog.org/tpb

Metropolitan Washington Council of Governments
777 North Capitol Street NE, Suite 300
Washington, DC 20002



National Capital Region
Transportation Planning Board