

Utility Data Analysis

2005, 2009-2011

Energy Advisory Committee

January 17, 2013

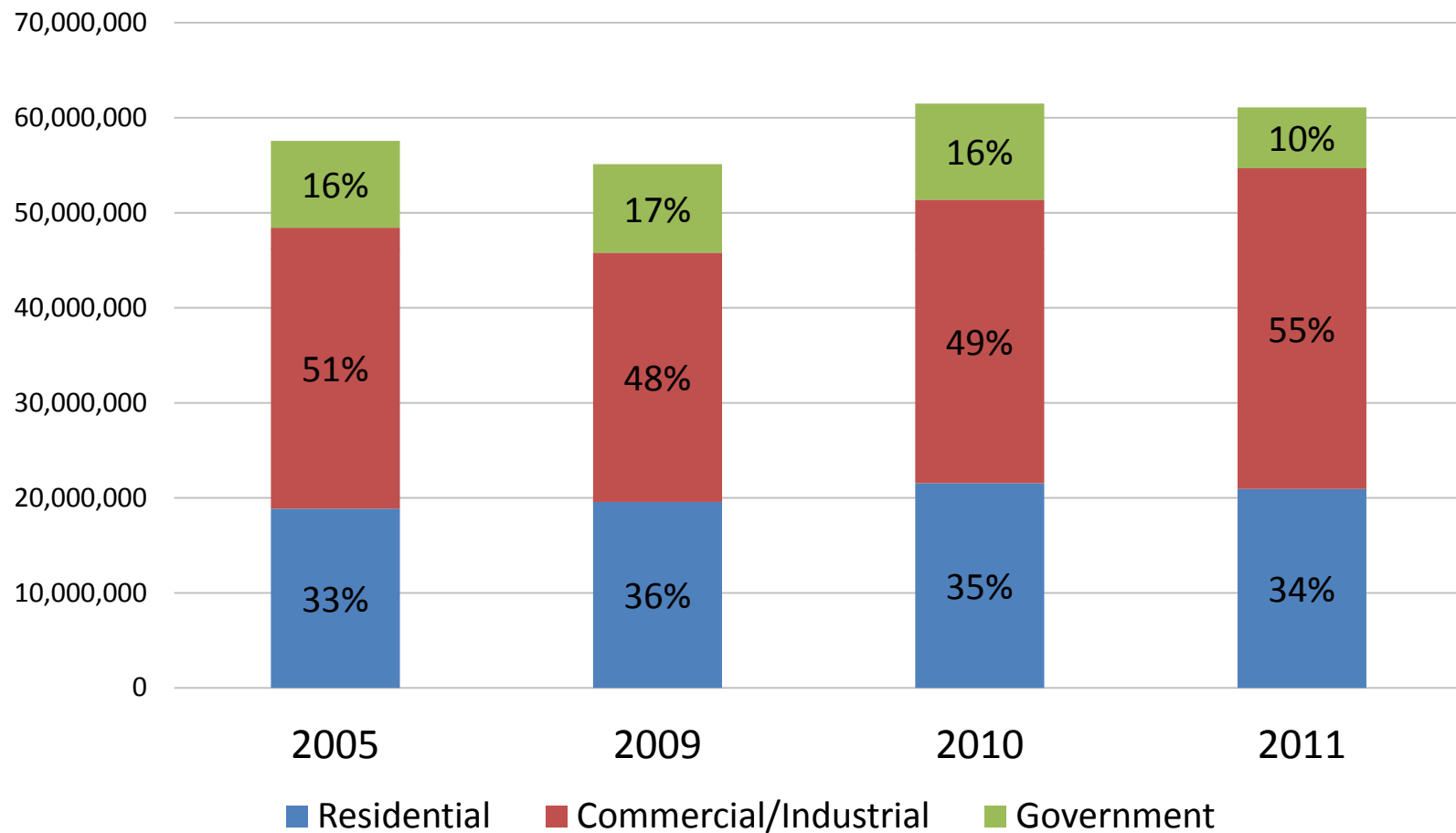


Data Sources

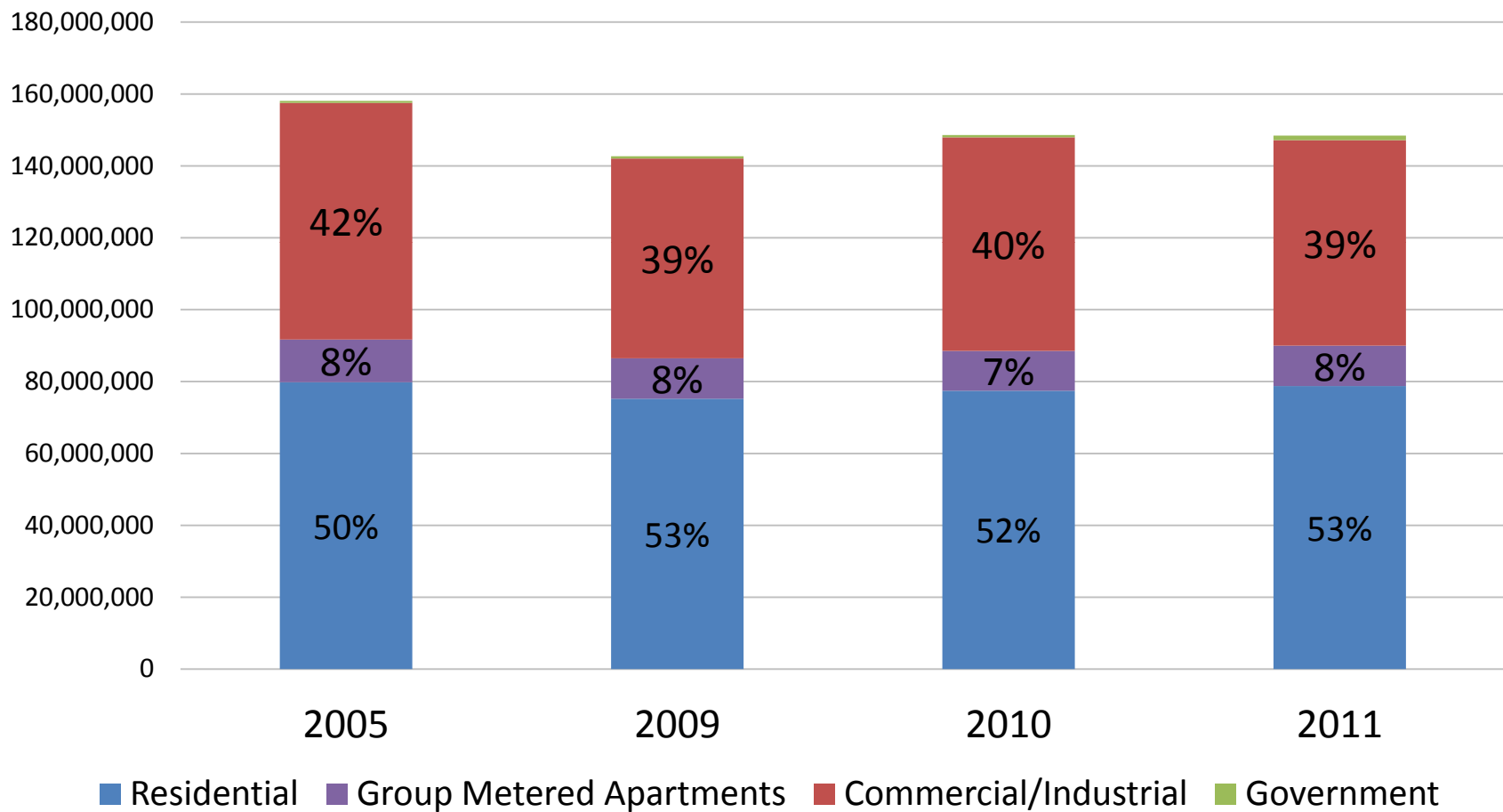
Utility	Jurisdictions	Data Provided
BGE	Montgomery & Prince George's Counties	Electricity Use (Residential, Commercial/Industrial); Natural Gas Use (Residential, Commercial/Industrial)
Pepco	District of Columbia, Montgomery and Prince George's Counties	Electricity Use (Residential, Commercial, Residential Government, Commercial Government)
Dominion	COG Virginia territory except Cities of Manassas and Manassas Park	Electricity Use (Residential, Commercial/Industrial/Government)
NOVEC	Manassas, Manassas Park, and Fairfax, Loudoun, and Prince William Counties	Electricity Use (Residential, Commercial/Industrial, Government)
Manassas	City of Manassas	Electricity Use (Residential, Commercial, Industrial, Government)
Washington Gas	All COG Jurisdictions	Natural Gas Use (Residential, Commercial, Industrial, Group Metered Apartments)
Columbia Gas	City of Manassas, City of Manassas Park, and Fairfax, Loudoun, and Prince William Counties	Natural Gas Use (Residential, Commercial, Industrial, Government)
Potomac Edison	Montgomery & Frederick Counties	Electricity Use (Residential, Commercial, Industrial, Government)



Electricity Use in Washington Region 2005, 2009-2011 (MWh)

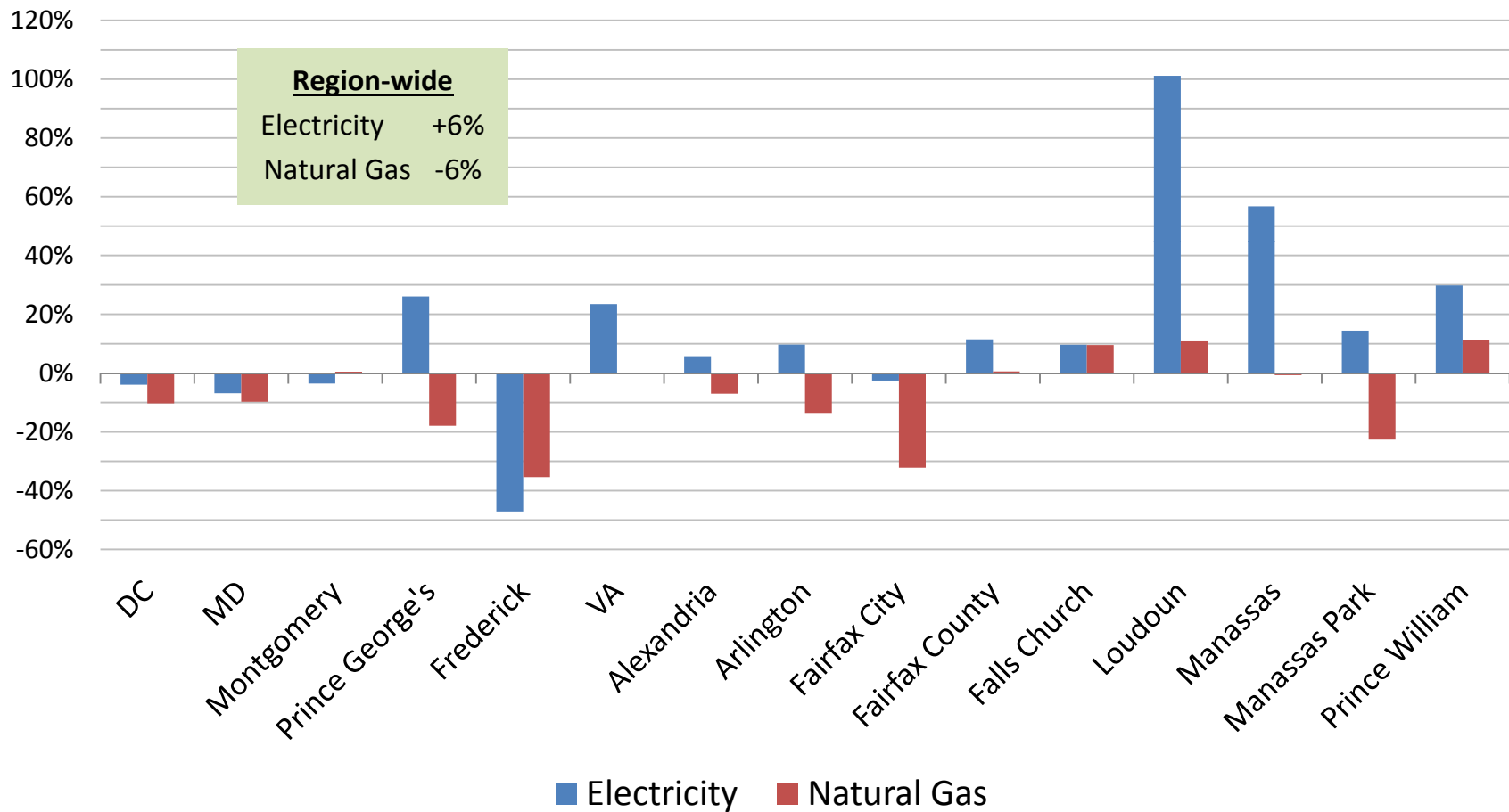


Natural Gas Use in Washington Region 2005, 2009-2011 (Therm)



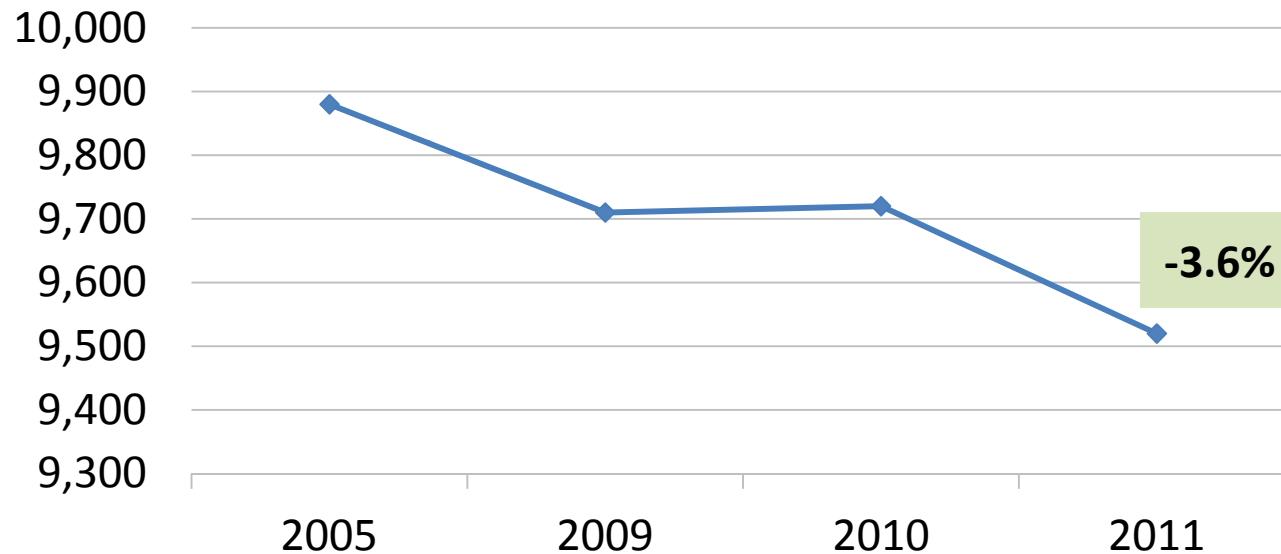
Change in Consumption by Jurisdiction

2005 to 2011



Residential Energy Intensity

Residential Electric and Natural Gas Use per Capita
(kWhe)



Residential Electric and Natural Gas Use per Capita represents residential electric use plus residential and group metered apartment natural gas use combined using a kWh equivalent factor for natural gas of 29.3.

2005 and 2009 populations from COG Planning Department [2005-2009 Economic Trends Report](#); 2010 population from COG tabulation of 2010 Census data



Grid Connected Renewables

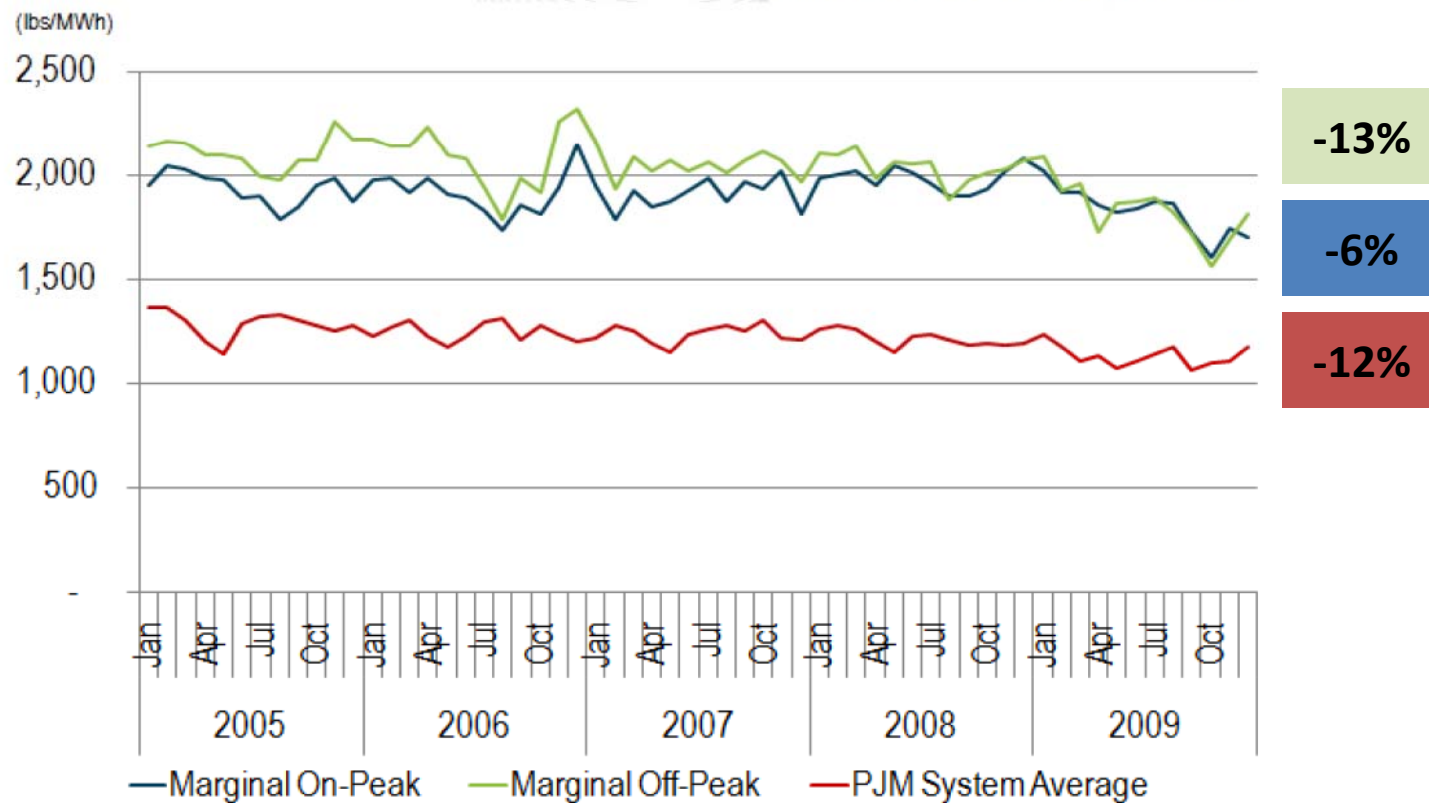
Jurisdiction	Utility	Type	2009		2010		2011	
			# Systems	Capacity (kW)	# Systems	Capacity (kW)	# Systems	Capacity (kW)
Alexandria	Dominion	Solar	28	97	33	118	41	171
	Dominion	Wind					2	4
Arlington	Dominion	Solar	40	138	46	157	54	236
Fairfax	Dominion	Solar	4	16	52	242	11	55
Falls Church	Dominion	Solar	7	26	11	54	13	63
Loudoun County	Dominion	Solar	-	-	48	252	-	not reported
Manassas	Dominion	Solar	-	-	3	14	3	14
Prince William County	Dominion	Solar	-	-	7	42		not reported
DC	Pepco	Solar	103	660	273	1,694	524	3,579
Montgomery County	Pepco	Solar	186	2,142	397	3,919	590	5,442
	BGE	Solar					12	60
Prince George's County	Pepco	Solar	33	396	50	614	102	3,461
	BGE	Solar					84	359
Frederick/Montgomery	Potomac Edison	Solar	50	369	137	2,672	163	3,236
Frederick/Montgomery	Potomac Edison	Wind	10	40	21	73	24	84
TOTAL SOLAR			451	3,844	1,057	9,777	1,597	16,678
TOTAL WIND			10	40	21	73	26	88
TOTAL GRID CONNECTED SYSTEMS			461	3,883	1,078	9,850	1,623	16,766



CO₂ Emission Rates



CO₂ Emissions Rates of Marginal Units
Average CO₂ Emissions Rates



Questions/Comments?

www.ncrportal.mwcog.org/sites/surveys/climate/default.aspx

Jeff King

202/962.3238

jking@mwcog.org

Julia Allman

202/962.3245

jallman@mwcog.org

