

# HOW SAFE ARE OUR ROADS?

Annual data report on the impact of drunk driving on road safety in the metropolitan Washington region in 2022

December 2023



## **HOW SAFE ARE OUR ROADS? ANNUAL DATA REPORT ON THE IMPACT OF DRUNK DRIVING ON ROAD SAFETY IN THE METROPOLITAN WASHINGTON REGION IN 2022**

Prepared for the Washington Regional Alcohol Program by the Metropolitan Washington Council of Governments.

December 2023

### **ABOUT WRAP**

Founded in 1982, the nonprofit [501(c)(3)] Washington Regional Alcohol Program (WRAP) is an award-winning public-private partnership working to prevent drunk driving and underage drinking in the Washington-metropolitan area. Through public education, innovative health education programs and advocacy, WRAP is credited with helping to keep the annual percentage of metro-Washington traffic deaths involving alcohol-impaired driving historically lower than the national average. WRAP, however, may best be known to area residents via the organization's popular free safe ride service to prevent drunk driving, SoberRide®.

### **ABOUT COG**

The Metropolitan Washington Council of Governments (COG) is an independent, nonprofit association that brings area leaders together to address major regional issues in the District of Columbia, suburban Maryland, and Northern Virginia. COG's membership is comprised of 300 elected officials from 24 local governments, the Maryland and Virginia state legislatures, and U.S. Congress.

### **CREDITS**

Cover photo caption: "St. Patrick's Day represents that time of year when nearly half of all U.S. traffic fatalities involve alcohol-impaired drivers." Metropolitan Police Department (DC) Assistant Chief Pamela Smith at the March 16, 2023 launch of WRAP's St. Patrick's Day SoberRide campaign.

### **ACCOMMODATIONS POLICY**

Alternative formats of this document are available upon request. Visit [www.mwcog.org/accommodations](http://www.mwcog.org/accommodations) or call (202) 962-3300 or (202) 962-3213 (TDD).

### **TITLE VI NONDISCRIMINATION POLICY**

The Metropolitan Washington Council of Governments (COG) operates its programs without regard to race, color, and national origin and fully complies with Title VI of the Civil Rights Act of 1964 and related statutes and regulations prohibiting discrimination in all programs and activities. For more information, to file a Title VI related complaint, or to obtain information in another language, visit [www.mwcog.org/nondiscrimination](http://www.mwcog.org/nondiscrimination) or call (202) 962-3300.

El Consejo de Gobiernos del Área Metropolitana de Washington (COG) opera sus programas sin tener en cuenta la raza, el color, y el origen nacional y cumple con el Título VI de la Ley de Derechos Civiles de 1964 y los estatutos y reglamentos relacionados que prohíben la discriminación en todos los programas y actividades. Para más información, presentar una queja relacionada con el Título VI, u obtener información en otro idioma, visite [www.mwcog.org/nondiscrimination](http://www.mwcog.org/nondiscrimination) o llame al (202) 962-3300.



# TABLE OF CONTENTS

A LOOK AT REGIONAL AND NATIONAL FIGURES	1
HOW SAFE ARE OUR ROADS? 2023 REPORT OVERVIEW	3
SUB-REGIONAL TRENDS	5
TOTAL TRAFFIC FATALITIES	6
ALCOHOL-IMPAIRED TRAFFIC FATALITIES	7
TOTAL TRAFFIC INJURIES	8
ALCOHOL-RELATED TRAFFIC INJURIES	9
TOTAL TRAFFIC CRASHES	10
ALCOHOL-RELATED TRAFFIC CRASHES	11
TOTAL TRAFFIC ARRESTS	12
ALCOHOL-RELATED TRAFFIC ARRESTS	13
YOUTH DATA	14
METHODOLOGY	15

# FIGURES

<b>FIGURE 1. NATIONAL &amp; REGIONAL PERCENTAGES OF ALCOHOL-IMPAIRED TRAFFIC FATALITIES, 2015-2022</b>	<b>1</b>
<b>FIGURE 2. REGIONAL TOTALS OF ALCOHOL-RELATED TRAFFIC INJURIES, CRASHES, &amp; ARRESTS, 2015-2022</b>	<b>2</b>
<b>FIGURE 3. REGIONAL ALCOHOL-IMPAIRED TRAFFIC FATALITIES, 2015-2022</b>	<b>2</b>
<b>FIGURE 4. ALCOHOL-RELATED CHANGE PER YEAR: NORTHERN VIRGINIA</b>	<b>5</b>
<b>FIGURE 5. ALCOHOL-RELATED CHANGE PER YEAR: SUBURBAN MARYLAND</b>	<b>5</b>
<b>FIGURE 6. ALCOHOL-RELATED CHANGE PER YEAR: DISTRICT OF COLUMBIA</b>	<b>5</b>

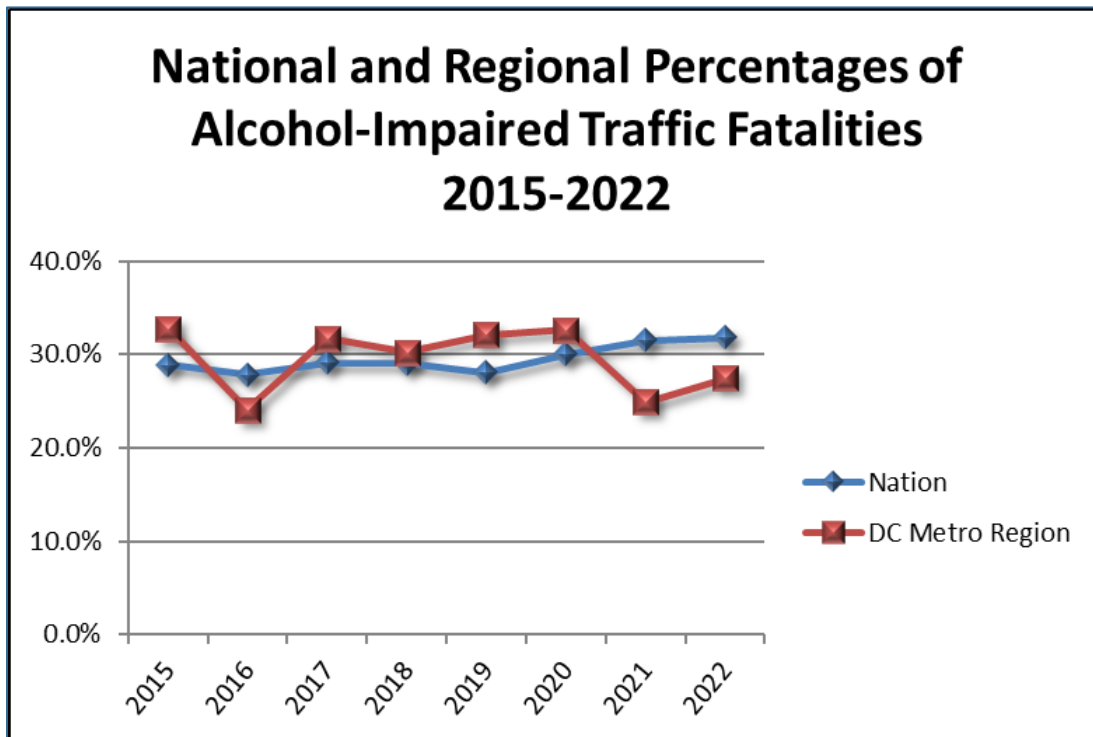
## A LOOK AT REGIONAL AND NATIONAL FIGURES

The metropolitan Washington region has experienced a decrease in alcohol and/or drug-impaired fatalities and an increase in alcohol and/or drug-impaired crashes, arrests, and injuries in 2022.

Regional alcohol and/or drug-impaired traffic fatalities have increased 12.94 percent of total crash fatalities in the region in 2022 from 2021, compared to a decrease of 10.53 percent in 2021 from 2020. Nationally, alcohol-impaired fatality rates decreased 0.7 percent in 2022 from 2021 (however, the percentage of alcohol-impaired fatalities of the total national crash fatalities increased slightly in 2022 to 31.81 percent as compared to 31.49 percent in 2021).<sup>1</sup>

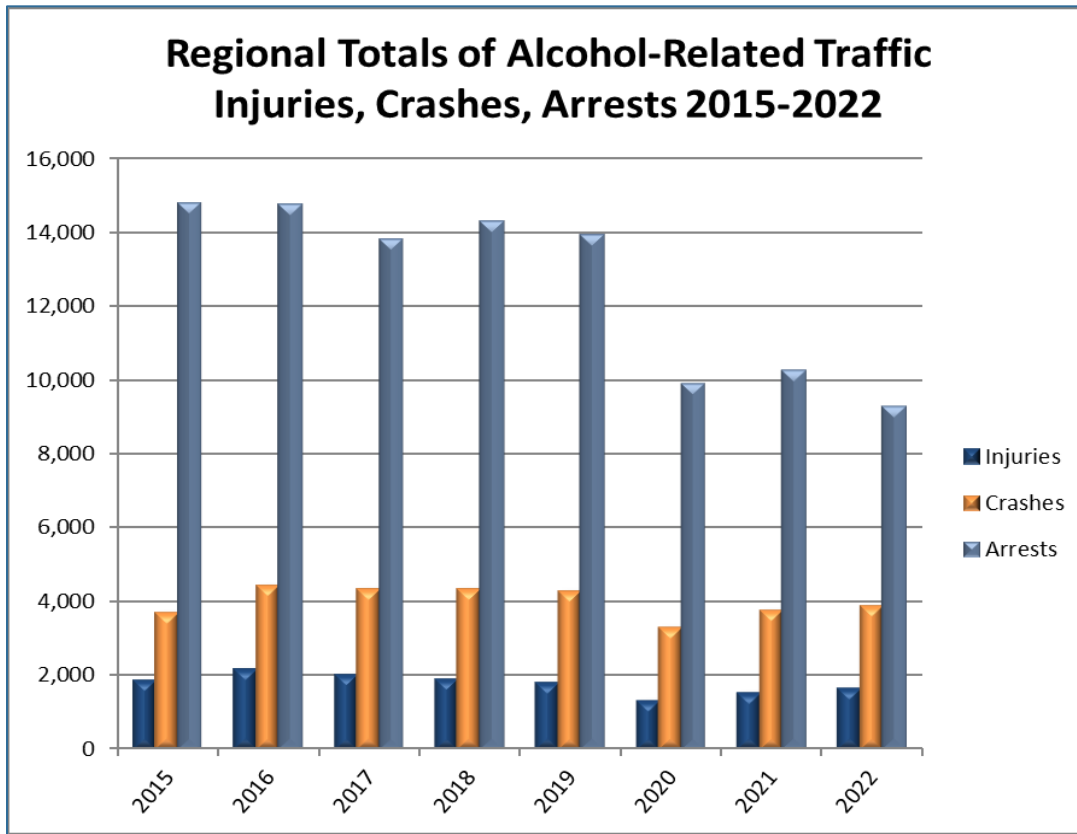
Jurisdictions differ in collection and categorization methods for alcohol-impaired driving, therefore, some of the data in this report may include both alcohol and alcohol/drug-impaired driving numbers. These regional totals include U.S. Park Police data.

**Figure 1. National & Regional Percentages of Alcohol-Impaired Traffic Fatalities, 2015-2022**

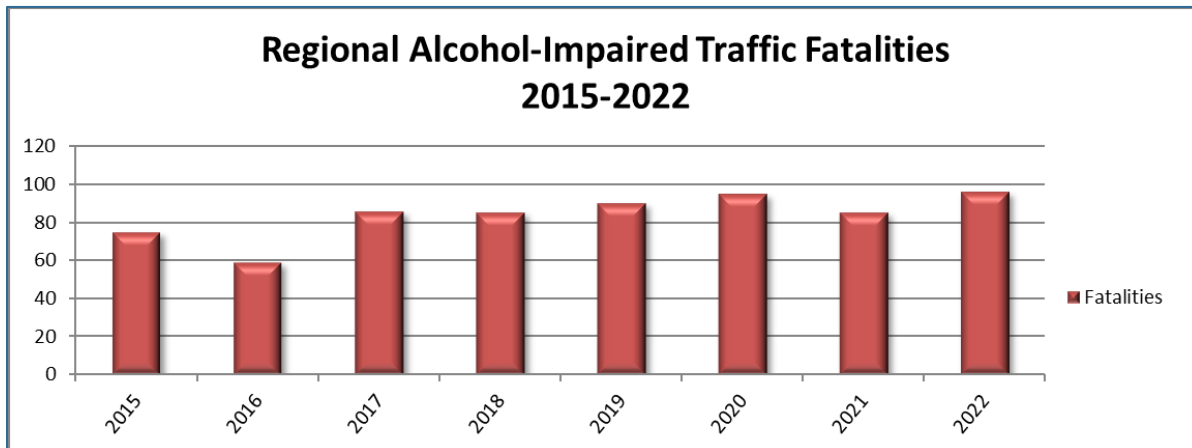


<sup>1</sup> For additional information, see [NHTSA Overview of Motor Vehicle Traffic Crashes in 2022](#).

**Figure 2. Regional Totals of Alcohol-Related Traffic Injuries, Crashes, & Arrests, 2015-2022**



**Figure 3. Regional Alcohol-Impaired Traffic Fatalities, 2015-2022**



# HOW SAFE ARE OUR ROADS? 2023 REPORT OVERVIEW

Findings in the 2023 report (2022 data) include:

**FATALITIES:** Regional (DC Metro region and National Parks) alcohol and/or drug-impaired traffic fatalities **increased** by 12.94 percent between 2021 and 2022 (from 85 to 96 such fatalities).

- The total average number of regional alcohol and/or drug-impaired traffic fatalities over the last five years (2018-2022) is 90.
- Three of the last five years have had equal to less alcohol and/or drug-impaired traffic fatalities than the average.
- Of the metropolitan Washington region's 350 total traffic fatalities for 2022, 96 (or 27.43%) were due to drivers who were alcohol and/or drug-impaired (Blood Alcohol Concentration [BAC] = .08+).

**INJURIES:** DC Metro regional alcohol and/or drug-related traffic injuries **increased** 9.54 percent between 2021 and 2022 (from 1,489 to 1,631 such injuries).<sup>2</sup>

- The average number of DC Metro regional alcohol and/or drug-impaired related traffic injuries over the last five years (2018-2022) is 1,594.
- Two of the last five years have had less alcohol and/or drug-impaired traffic injuries than the average.

**CRASHES:** DC Metro regional traffic crashes attributed to alcohol and/or drugs **increased** 13.70 percent between 2021 and 2022 (from 3,694 to 3,853 such crashes).<sup>3</sup>

- The average number of DC Metro regional alcohol and/or drug-impaired related traffic crashes over the last five years (2018-2022) is 3,862.
- Three of the last five years have had less alcohol and/or drug-impaired traffic crashes than the average.

**ARRESTS:** Regional (DC Metro region and National Parks) arrests for either driving under the influence (DUI) or driving while impaired (DWI) **decreased** 9.3 percent between 2021 and 2022 (from 10,248 to 9,295 such arrests).

- The average number of regional alcohol and/or drug-impaired related arrests over the last five years (2018-2022) is 11,528.
- Three of the last five years have had less alcohol and/or drug-impaired traffic arrests than the average.

---

<sup>2</sup> Alcohol and/or drug-related injury data from U.S. Park Police was unavailable for 2022.

<sup>3</sup> Alcohol and/or drug-related crash data from U.S. Park Police was unavailable for 2022.

## Background

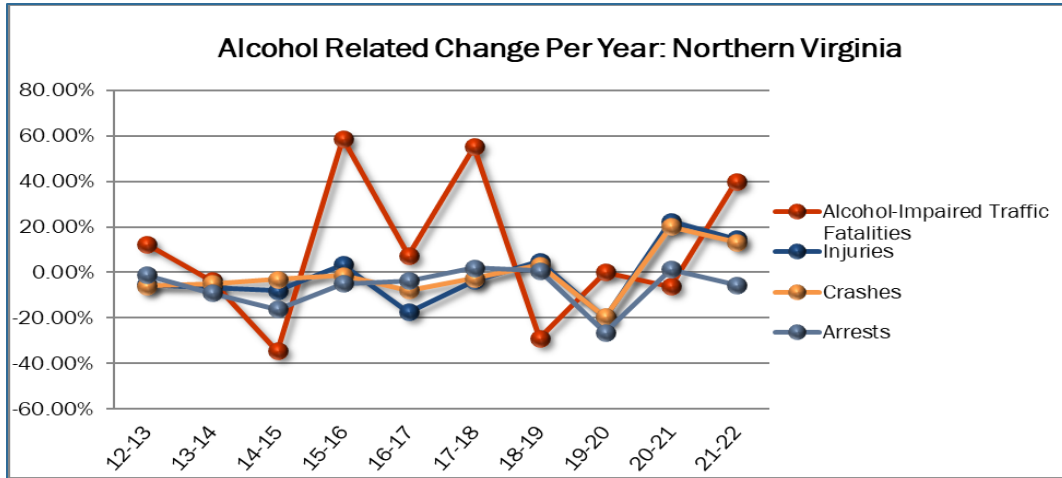
Data compiled in this report comes from national, state, and local sources including the U.S. Census Bureau, National Highway Traffic Safety Administration (NHTSA), U.S. Park Police, Metropolitan Police Department, District of Columbia Department of Transportation, Virginia Department of Motor Vehicles, Maryland National Study Center for Trauma and Emergency Medical Systems, and local police departments of each jurisdiction.

Jurisdictional data in this report does not always include State Police data. The State Police in Maryland and Virginia are charged with enforcing traffic laws on state highways and interstate expressways; inclusion of this data would likely increase the number of incidents in all categories. It is possible that some jurisdictional data may include State Police figures because local police often respond to highway incidents when State Police are unavailable. In some jurisdictions, the data reported was provided by the state, and most likely include state police data.

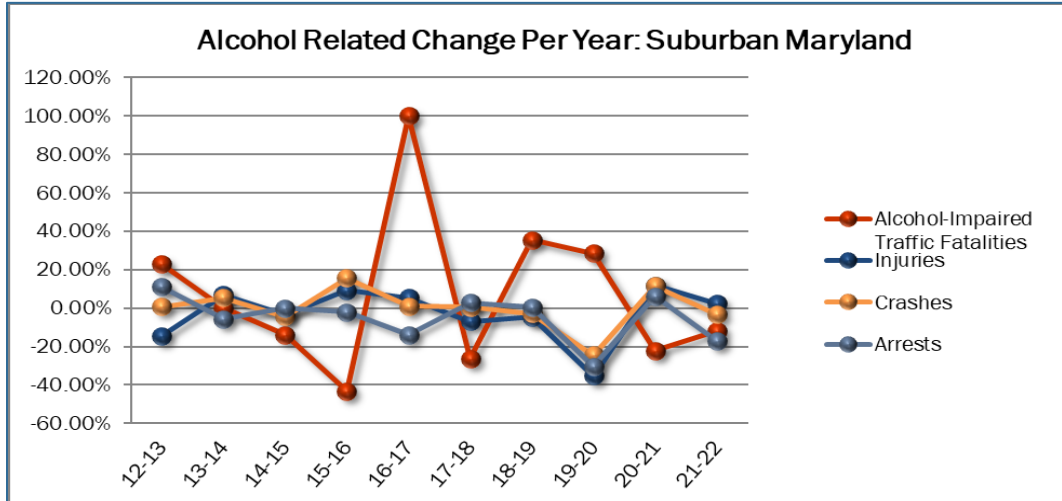


# SUB-REGIONAL TRENDS

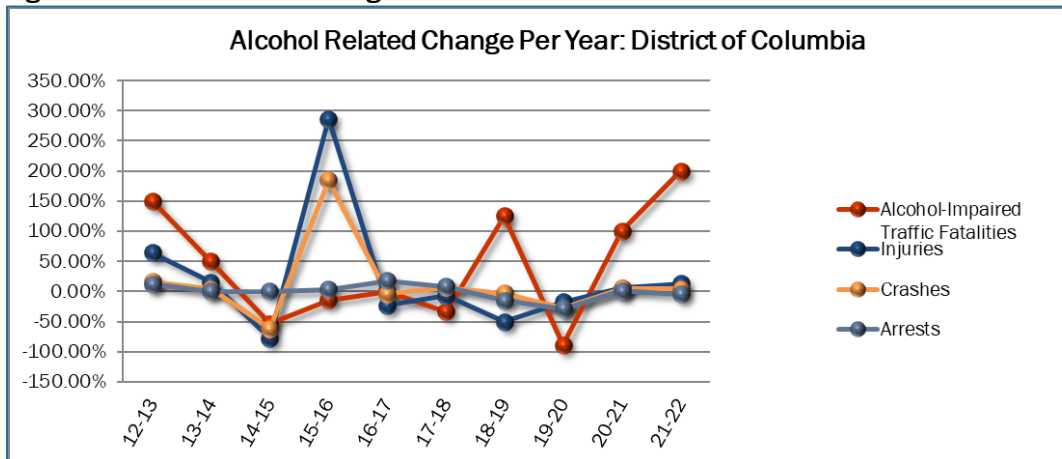
**Figure 4. Alcohol-Related Change Per Year: Northern Virginia**



**Figure 5. Alcohol-Related Change Per Year: Suburban Maryland**



**Figure 6. Alcohol-Related Change Per Year: District of Columbia**



# TOTAL TRAFFIC FATALITIES

Total Traffic Fatalities by Jurisdiction, 2015-2022									
Year	2015	2016	2017	2018	2019	2020	2021	2022	Percent Change 2021-2022
<b>DISTRICT OF COLUMBIA</b>									
Washington	26	28	33	36	27	37	40	35	-12.50%
<b>MARYLAND</b>									
Montgomery County	47	42	33	34	37	46	43	48	11.63%
Prince George's County	95	78	99	103	112	110	129	121	-6.20%
MD Regional Total	142	120	132	137	149	156	172	169	-1.74%
<b>VIRGINIA</b>									
Arlington County	5	1	5	2	6	4	4	4	0.00%
Fairfax County	30	36	35	47	45	37	50	66	32.00%
Loudoun County	11	12	22	11	13	12	8	16	100.00%
Prince William County	11	30	22	24	14	18	32	30	-6.25%
City of Alexandria	4	4	4	5	5	7	7	5	-28.57%
City of Fairfax	0	4	0	2	2	1	1	2	100.00%
City of Falls Church	0	0	0	0	0	0	0	0	0.00%
City of Manassas	0	0	2	4	1	1	1	2	100.00%
City of Manassas Park	0	0	0	0	0	0	1	0	-100.00%
Northern Virginia Total	61	87	90	95	86	80	104	125	20.19%
DC Metro Regional Total	229	235	255	268	262	273	316	329	4.11%
National Parks in Region	17	10	16	13	18	18	25	21	-16.00%
Regional Total Adjusted	246	245	271	281	280	291	341	350	2.64%
National	35,484	37,806	37,473	36,835	36,355	38,824	43,230 <sup>4</sup>	42,514	-1.66%

<sup>4</sup> The national traffic fatality number for 2021 was changed from 42,939 to 43,230 in the [NHTSA Overview of Motor Vehicle Traffic Crashes in 2022](#).

# ALCOHOL-IMPAIRED TRAFFIC FATALITIES

Alcohol-Impaired Traffic Fatalities by Jurisdiction with BAC=.08+, 2015-2022									
Year	2015	2016	2017	2018	2019	2020	2021	2022	Percent Change 2021-2022
<b>DISTRICT OF COLUMBIA</b>									
Washington	7	6	6	4	9	1	2	6	200.00%
<b>MARYLAND</b>									
Montgomery County	10	4	8	7	10	16	8	11	37.50%
Prince George's County	27	17	34	24	32	38	34	26	-23.53%
MD Regional Total	37	21	42	31	42	54	42	37	-11.90%
<b>VIRGINIA</b>									
Arlington County	2	0	2	1	2	1	0	3	N/A*
Fairfax County	9	12	12	18	17	18	17	22	29.41%
Loudoun County	2	4	7	7	5	7	2	3	50.00%
Prince William County	2	9	6	14	6	3	10	11	10.00%
City of Alexandria	2	1	1	3	2	2	1	1	0.00%
City of Fairfax	0	1	0	0	0	0	0	1	N/A*
City of Falls Church	0	0	0	0	0	0	0	0	0.00%
City of Manassas	0	0	1	2	0	1	0	1	N/A*
City of Manassas Park	0	0	0	0	0	0	0	0	0.00%
Northern Virginia Total	17	27	29	45	32	32	30	42	40.00%
DC Metro Regional Total	61	54	77	80	83	87	74	85	14.86%
National Parks in Region	14	5	9	5	7	8	11	11	0.00%
Regional Total Adjusted	75	59	86	85	90	95	85	96	12.94%
National	10,320	10,497	10,908	10,710	10,196	11,718	13,617 <sup>5</sup>	13,524	-0.68%

\*Percentage not available due to original value being zero.

<sup>5</sup> The national alcohol-related traffic fatality number for 2021 was changed from 13,384 to 13,617 in the [NHTSA Overview of Motor Vehicle Traffic Crashes in 2022](#).

# TOTAL TRAFFIC INJURIES

Total Traffic Injuries by Jurisdiction, 2015-2022									
Year	2015	2016	2017	2018	2019	2020	2021	2022	Percent Change 2021-2022
<b>DISTRICT OF COLUMBIA</b>									
Washington	8,638	3,878	3,612	3,437	2,403	2,027	2,635	<b>3,057</b>	16.02%
<b>MARYLAND</b>									
Montgomery County	6,365	7,045	7,000	6,753	6,453	4,252	4,696	<b>5,104</b>	8.69%
Prince George's County	6,746	7,715	7,787	7,351	7,285	5,168	5,803	<b>5,576</b>	-3.91%
MD Regional Total	13,111	14,760	14,787	14,104	13,738	9,420	10,499	<b>10,680</b>	1.72%
<b>VIRGINIA</b>									
Arlington County	978	1,048	1,036	998	1,125	590	734	<b>826</b>	12.53%
Fairfax County	7,677	7,564	6,418	6,000	6,032	3,733	4,613	<b>4,973</b>	7.80%
Loudoun County	2,143	2,289	2,081	2,299	2,079	1,317	1,523	<b>1,746</b>	14.64%
Prince William County	2,747	2,785	2,652	2,811	2,899	1,889	2,771	<b>2,900</b>	4.66%
City of Alexandria	731	721	576	699	673	420	466	<b>494</b>	6.01%
City of Fairfax	338	294	242	147	164	92	103	<b>153</b>	48.54%
City of Falls Church	160	133	177	154	150	92	147	<b>156</b>	6.12%
City of Manassas	626	773	711	756	541	480	462	<b>541</b>	17.10%
City of Manassas Park	48	60	26	63	36	31	54	<b>97</b>	79.63%
Northern Virginia Total	15,448	15,667	13,919	13,927	13,699	8,644	10,873	<b>11,886</b>	9.32%
DC Metro Region Total	37,197	34,305	32,318	31,468	29,840	20,091	24,007	<b>25,623</b>	6.73%
National Parks in Region	603	532	492	496	496	195	437	<b>465</b>	6.41%
Regional Total Adjusted	37,800	34,837	32,810	31,964	30,336	20,286	24,444	<b>26,088</b>	6.73%

# ALCOHOL-RELATED TRAFFIC INJURIES

Alcohol-Related Traffic Injuries by Jurisdiction with BAC=.01+, 2015-2022									
Year	2015	2016	2017	2018	2019	2020	2021	2022	Percent Change 2021-2022
<b>DISTRICT OF COLUMBIA</b>									
Washington	59	228	176	163	81	67	71	80	12.68%
<b>MARYLAND</b>									
Montgomery County	366	401	492	423	357	263	245	344	40.41%
Prince George's County	451	492	448	451	476	277	358	272	-24.02%
MD Regional Total	817	893	940	874	833	540	603	616	2.16%
<b>VIRGINIA</b>									
Arlington County	84	91	94	79	89	53	71	103	45.07%
Fairfax County	442	459	331	290	329	270	329	383	16.41%
Loudoun County	128	144	117	133	124	107	97	165	70.10%
Prince William County	182	182	163	181	187	147	226	187	-17.26%
City of Alexandria	52	53	53	48	44	35	34	35	2.94%
City of Fairfax	25	12	17	7	6	8	8	12	50.00%
City of Falls Church	10	11	11	7	10	8	10	8	-20.00%
City of Manassas	41	38	33	35	33	27	36	32	-11.11%
City of Manassas Park	2	9	5	13	9	11	4	10	150.00%
Northern Virginia Total	966	999	824	793	831	666	815	935	14.72%
DC Metro Region Total	1,842	2,120	1,940	1,830	1,745	1,273	1,489	1,631	9.54%
National Parks in Region	N/A	33	46	33	32	25	33	N/A	N/A
Regional Total Adjusted	N/A	2,153	1,986	1,863	1,777	1,298	1,522	N/A	N/A



# TOTAL TRAFFIC CRASHES

Total Traffic Crashes by Jurisdiction, 2015-2022									
Year	2015	2016	2017	2018	2019	2020	2021	2022	Percent Change 2021-2022
<b>DISTRICT OF COLUMBIA</b>									
Washington	2,400	25,850	25,712	25,818	26,823	18,311	21,617	<b>21,722</b>	0.49%
<b>MARYLAND</b>									
Montgomery County	13,006	14,160	14,239	14,231	13,843	9,728	11,183	<b>12,212</b>	9.20%
Prince George's County	14,758	17,185	18,297	19,562	20,516	17,134	19,952	<b>19,723</b>	-1.15%
MD Regional Total	27,764	31,345	32,536	33,793	34,359	26,862	31,135	<b>31,935</b>	2.57%
<b>VIRGINIA</b>									
Arlington County	2,483	2,711	2,508	2,535	2,558	1,516	1,773	<b>2,042</b>	15.17%
Fairfax County	14,024	13,781	13,631	13,368	13,301	8,735	9,958	<b>11,571</b>	16.20%
Loudoun County	4,824	4,921	4,875	5,149	4,951	3,421	4,051	<b>4,604</b>	13.65%
Prince William County	5,660	5,564	5,540	5,757	5,880	4,416	5,668	<b>6,025</b>	6.30%
City of Alexandria	1,912	1,736	1,441	1,566	1,499	957	1,096	<b>1,163</b>	6.11%
City of Fairfax	561	565	596	417	528	325	440	<b>437</b>	-0.68%
City of Falls Church	169	144	121	130	121	80	87	<b>85</b>	-2.30%
City of Manassas	595	633	573	607	438	412	318	<b>355</b>	11.64%
City of Manassas Park	81	97	55	71	80	64	93	<b>101</b>	8.60%
Northern Virginia Total	30,309	30,152	29,340	29,600	29,356	19,926	23,484	<b>26,383</b>	12.34%
DC Metro Region Total	60,473	87,347	87,588	89,211	90,538	65,099	76,236	<b>80,040</b>	4.99%
National Parks in Region	4,621	4,049	3,486	1,600	1,462	1,018	2,639	<b>3,436</b>	30.20%
Regional Total Adjusted	65,094	91,396	91,074	90,811	92,000	66,117	78,875	<b>83,476</b>	5.83%

## ALCOHOL-RELATED TRAFFIC CRASHES

Total Alcohol-Related Traffic Crashes by Jurisdiction with a BAC=.01+, 2015-2022									
Year	2015	2016	2017	2018	2019	2020	2021	2022	Percent Change 2021-2022
<b>DISTRICT OF COLUMBIA</b>									
Washington	260	740	710	756	735	529	557	<b>579</b>	3.95%
<b>MARYLAND</b>									
Montgomery County	815	905	954	881	827	651	710	<b>787</b>	10.85%
Prince George's County	933	1,116	1,085	1,166	1,163	850	963	<b>830</b>	-13.81%
MD Regional Total	1,748	2021	2,039	2,047	1,990	1,501	1,673	<b>1,617</b>	-3.35%
<b>VIRGINIA</b>									
Arlington County	218	199	203	162	192	121	172	<b>192</b>	11.63%
Fairfax County	708	701	621	580	589	496	545	<b>650</b>	19.27%
Loudoun County	222	259	227	251	244	181	220	<b>283</b>	28.64%
Prince William County	332	305	296	333	343	284	400	<b>384</b>	-4.00%
City of Alexandria	99	94	83	88	87	68	69	<b>84</b>	21.74%
City of Fairfax	29	19	26	10	15	16	21	<b>18</b>	-14.29%
City of Falls Church	8	12	10	4	8	8	7	<b>7</b>	0.00%
City of Manassas	40	30	33	35	27	31	21	<b>27</b>	28.57%
City of Manassas Park	4	19	9	6	10	14	9	<b>12</b>	33.33%
Northern Virginia Total	1,660	1,638	1,508	1,469	1,515	1,219	1,464	<b>1,657</b>	13.18%
DC Metro Region Total	3,668	4,399	4,257	4,272	4,240	3,249	3,694	<b>3,853</b>	13.70%
National Parks in Region	N/A	33	54	63	33	43	45	<b>N/A</b>	N/A
Regional Total Adjusted	N/A	4,432	4,311	4,335	4,273	3,292	3,739	<b>N/A</b>	N/A

# TOTAL TRAFFIC ARRESTS

Total Traffic Arrests by Jurisdiction, 2015-2022 <sup>6</sup>									
Year	2015	2016	2017	2018	2019	2020	2021	2022	Percent Change 2021-2022
<b>DISTRICT OF COLUMBIA</b>									
Washington	N/A	4,283	5,193	6,496	7,007	3,826	3,576	<b>3,192</b>	-10.74%
<b>MARYLAND</b>									
Montgomery County	82,050	75,837	67,828	66,117	55,373	29,719	26,254	<b>20,935</b>	-20.26%
Prince George's County	112,695	86,853	84,187	80,483	81,528	50,560	47,320	<b>42,306</b>	-10.60%
MD Regional Total	194,745	162,690	152,015	146,600	136,901	80,279	73,574	<b>63,241</b>	-14.04%
<b>VIRGINIA</b>									
Arlington County	45,855	35,316	33,733	41,246	47,767	35,438	25,849	<b>23,123</b>	-10.55%
Fairfax County	203,425	219,471	201,874	207,082	204,964	81,971	90,211	<b>102,759</b>	13.91%
Loudoun County	41,129	37,977	45,181	46,525	48,569	27,143	27,959	<b>28,110</b>	0.54%
Prince William County	67,678	69,599	72,511	76,587	79,470	48,089	47,448	<b>31,090</b>	-34.48%
City of Alexandria	15,758	19,154	26,111	17,473	15,407	9,441	1,047	<b>7,066</b>	574.88%
City of Fairfax	7,217	8,635	8,451	7,358	7,124	2,084	2,090	<b>2,721</b>	30.19%
City of Falls Church	3,611	3,612	2,252	2,967	2,075	728	414	<b>1,739</b>	320.05%
City of Manassas	6,307	5,414	5,387	5,918	6,931	5,370	6,302	<b>9,006</b>	42.91%
City of Manassas Park	2,750	3,494	3,921	3,473	4,041	2,614	2,478	<b>2,473</b>	-0.20%
Northern Virginia Total	393,730	402,672	399,421	408,629	416,348	212,878	203,798	<b>208,087</b>	2.10%
DC Metro Region Total	N/A	569,645	556,629	561,725	560,256	296,983	280,948	<b>274,520</b>	-2.29%
National Parks in Region	N/A	649	690	716	276	122	209	<b>414</b>	98.09%
Regional Total Adjusted	N/A	570,294	557,319	562,441	560,532	297,105	281,157	<b>274,934</b>	-2.21%

<sup>6</sup> Total Traffic Arrests table is new to this year's report.

# ALCOHOL-RELATED TRAFFIC ARRESTS

Total Alcohol-Related Traffic Arrests by Jurisdiction, 2015-2022									
Year	2015	2016	2017	2018	2019	2020	2021	2022	Percent Change 2021-2022
<b>DISTRICT OF COLUMBIA</b>									
Washington	1,508	1,561	1,834	1,978	1,680	1,202	1,213	<b>1,155</b>	-4.78%
<b>MARYLAND</b>									
Montgomery County	3,973	4,101	3,406	3,442	3,253	1,960	1,978	<b>2,126</b>	7.48%
Prince George's County	2,894	2,629	2,379	2,506	2,715	2,193	2,425	<b>1,515</b>	-37.53%
MD Regional Total	6,867	6,730	5,785	5,948	5,968	4,153	4,403	<b>3,641</b>	-17.31%
<b>VIRGINIA</b>									
Arlington County	742	692	494	445	438	382	470	<b>525</b>	11.70%
Fairfax County	2,387	2,457	2,536	2,424	2,400	1,669	1,653	<b>1,728</b>	4.54%
Loudoun County	667	671	561	709	731	435	424	<b>531</b>	25.24%
Prince William County	1,941	1,651	1,613	1,890	1,904	1,535	1,486	<b>990</b>	-33.38%
City of Alexandria	349	324	397	292	263	178	230	<b>252</b>	9.57%
City of Fairfax	78	62	59	51	77	33	44	<b>32</b>	-27.27%
City of Falls Church	78	55	43	36	57	62	30	<b>23</b>	-23.33%
City of Manassas	138	124	125	91	117	101	121	<b>141</b>	16.53%
City of Manassas Park	46	71	56	58	51	52	45	<b>35</b>	-22.22%
Northern Virginia Total	6,426	6,107	5,884	5,996	6,038	4,447	4,503	<b>4,257</b>	-5.46%
DC Metro Region Total	14,801	14,398	13,503	13,922	13,686	9,802	10,119	<b>9,053</b>	-10.53%
National Parks in Region	N/A	359	305	371	234	80	129	<b>242</b>	87.60%
Regional Total Adjusted	N/A	14,757	13,808	14,293	13,920	9,882	10,248	<b>9,295</b>	-9.30%

# YOUTH DATA

Alcohol-Related Crashes, Injuries, and Arrests for Persons Under 21 Years of Age by Jurisdiction, 2022												
	Fatalities	Alcohol-Related Fatalities	% of Alcohol-Related Fatalities	Crashes	Alcohol-Related Crashes	% of Alcohol-Related Crashes	Injuries	Alcohol-Related Injuries	% of Alcohol-Related Injuries	Arrests	Alcohol-Related Arrests	% of Alcohol-Related Arrests
<b>DISTRICT OF COLUMBIA</b>												
Washington	2	0	0.00%	2,138	12	0.56%	379	3	0.79%	240	23	9.58%
<b>MARYLAND</b>												
Montgomery County	4	0	0.00%	2,704	107	3.96%	873	61	6.99%	1,958	59	3.01%
Prince George's County	13	3	23.08%	4,009	95	2.37%	950	29	3.05%	3,150	26	0.83%
MD Regional Total	17	3	17.65%	6,713	202	3.01%	1,823	90	4.94%	5,108	85	1.66%
<b>VIRGINIA</b>												
Arlington County	1	1	100.00%	265	11	4.15%	87	8	9.20%	976	9	0.92%
Fairfax County	11	3	27.27%	2,117	69	3.26%	579	30	5.18%	7,260	91	1.25%
Loudoun County	3	0	0.00%	1,081	40	3.70%	340	25	7.35%	3,012	30	1.00%
Prince William County	0	0	0.00%	1,308	43	3.29%	444	24	5.41%	3,666	48	1.31%
City of Alexandria	1	0	0.00%	156	5	3.21%	48	2	4.17%	546	9	1.65%
City of Fairfax	0	0	0.00%	97	2	2.06%	20	1	5.00%	270	2	0.74%
City of Falls Church	0	0	0.00%	24	0	0.00%	30	0	0.00%	133	1	0.75%
City of Manassas	0	0	0.00%	88	6	6.82%	91	5	5.49%	1,161	11	0.95%
City of Manassas Park	0	0	0.00%	22	3	13.64%	16	0	0.00%	314	5	1.59%
Northern Virginia Total	16	4	25.00%	5,158	179	3.47%	1,655	95	5.74%	17,338	206	1.19%
DC Metro Regional Total	35	7	20.00%	14,009	393	2.81%	3,857	188	4.87%	22,686	314	1.38%
National Parks in Region	1	0	0.00%	N/A	N/A	N/A	N/A	N/A	N/A	N/A	N/A	N/A
Regional Total Adjusted	36	7	19.44%	N/A	N/A	N/A	N/A	N/A	N/A	N/A	N/A	N/A



# METHODOLOGY

## Agencies Providing Local Jurisdictional Data

### DISTRICT OF COLUMBIA

- Metropolitan Police Department
- District Department of Transportation

### MARYLAND

- National Study Center for Trauma and Emergency Medical Systems (NSC) at the University of Maryland
- Montgomery County Police Department
- Prince George's County Police Department

### VIRGINIA

- Virginia Department of Motor Vehicles
- Arlington County Police Department
- Fairfax County Police Department
- Loudoun County Sheriff's Office
- Prince William County Police Department
- City of Alexandria Police Department
- City of Fairfax Police Department
- City of Falls Church Police Department
- City of Manassas Police Department
- City of Manassas Park Police Department

### FEDERAL

- U.S. Park Police

## Definitions of Data-Related Terms

**NHTSA Alcohol-Impaired Driving Traffic Fatalities:** Any fatality that occurs in motor vehicle traffic crash that involves at least one driver or a motorcycle rider (operator) with a BAC of .08 grams per deciliter or higher; This threshold does not consider the impairment status of non-occupants involved in fatal crashes, such as pedestrians or pedal cyclist.

**WRAP Alcohol-Impaired Driving Traffic Fatalities:** Any person who dies as result of a traffic crash involving alcohol with a BAC level .08 or higher.

**WRAP Alcohol-Related Traffic Fatalities for Persons Under 21:** Any person under the age of 21 who has died as result of an alcohol-related traffic crash involving a driver with a BAC level .01 or higher. This includes drivers, passengers, bicyclists, and pedestrians.

**Alcohol-Related Traffic Injuries:** Where any driver, passenger, bicyclist or pedestrian is listed on the police report to be injured in an alcohol-related crash where the BAC = .01 or higher.

**Alcohol-Related Traffic Injuries for Persons Under 21:** Any person under the age of 21 who receives injuries because of an alcohol-related crash where the BAC = .01 or higher; this includes drivers, passengers, bicyclists, and pedestrians.

**Alcohol-Related Traffic Crashes:** The driver, passenger, bicyclist, or pedestrian is listed on the police report as drinking before the crash with a BAC = .01 or higher. At least one driver in the crash was reported to be under the influence of alcohol and/or other drugs.

**Alcohol-Related Traffic Crashes for Persons Under 21:** Any person under the age of 21 who was involved in a traffic crash involving a driver with a BAC = .01 or higher. This data includes drivers, passengers, bicyclists, and pedestrians.

**Drunk Driving Arrests/Citation:** A general reference to those criminal cases prior to and/or after adjudication and sentencing that are called DUI, DWI, OUI, OWI or other acronyms that generally describe three types of cases:

- The driver is sufficiently impaired by alcohol, drugs or a combination of the two, and cannot drive safely, and has a BAC level of .01 or higher.
- The driver is a “Drunk Driver”, as defined by the driver being above that state’s legal limit of BAC .08.
- A driver under the age of 21 is under the influence of alcohol at a BAC level of .02 or higher.

**DWI/DUI Arrests:** A driver is listed on the police report as arrested for operating a motor vehicle under the influence of alcohol with a BAC level of .01 or higher.

**DWI/DUI Arrests for persons under 21:** Any person/driver under the age of 21 listed on the police report as arrested for operating a motor vehicle under the influence of alcohol with a BAC level of .01 or higher.

## Data Analysis

The findings in this report are based on data collected from organizations and agencies from across the metropolitan Washington region. Data tables provide totals within the metropolitan Washington region as well as individual jurisdictions. Analysis focuses on changes in motor vehicle fatalities, injuries, crashes, and arrests. Results are reported as numbers and percentage of alcohol-related incidents to total numbers across time.

## Data Limitations

It is important to note limitations that affected collection and analysis of this data, as they may limit comparability across jurisdictions and influence the level of reasonable analysis. Whenever possible, limitations are noted within the tables and figures.

It should be noted that the researchers constructing this report utilized data from the NSC at the University of Maryland, for data pertaining to crashes, injuries, and arrests. Regarding the alcohol-related crash and injury data, the variable identifies a driver or pedestrian under the influence of alcohol, drugs, both, or none. Within the NSC data reported, researchers analyzed drivers reported as under the influence of *alcohol or both*, to capture alcohol-related crashes and injuries. That variable is created using several others on the report (such as driver condition, BAC, etc.) so it does not specify only those with BAC 0.01+, and comparisons to previous year's data should be made with caution. In addition, because this report tracks just two jurisdictions in Maryland, regional totals could also be affected.

Additionally, there is no standardization for data definitions, collection, or recording within the metropolitan Washington region. Each agency has its own system of data collection, coding, and management. In addition, the range and type of data collected may not be consistent across jurisdictions. The data reported and analyzed in this report reflect data as reported by contact agencies. Independent verification of data to ensure accuracy is not within the scope of this report.

Information on data collection and management systems and changes within jurisdictions was not solicited. In addition, changes in laws or judicial priorities may result in increased attention to specific data (e.g., blood alcohol level in driver fatalities related to stricter server laws). In some cases, this may result in missing data or data that appears inconsistent when examined against the same values for previous years. It is beyond the scope of this report to identify data methodology or priority changes for each jurisdiction.

Data on alcohol-related driver involvement in motor vehicle fatalities, injuries, crashes, and arrests was requested for alcohol-related (BAC= .01+) only, however, due to differences between jurisdictions in reporting on impaired data, some cases may involve drug use.

The number of incidents, total and related to alcohol impairment, is very small for some jurisdictions. Due to the small numbers, jurisdictional analysis might easily misrepresent the problem. For example, an increase of one alcohol-related fatality would have little impact in a jurisdiction that saw 50 alcohol-related fatalities the previous year but would appear to represent a significant change in a small jurisdiction with only one or two alcohol-related fatalities the previous year.

Data are reported and analyzed by absolute numbers only. At this time, information that would allow identification of comparable rates is unavailable. It is assumed that people involved in motor vehicle

crashes and arrests may live within or outside the metropolitan Washington region. Collection of data on driver or passenger residence versus jurisdiction of crash is beyond the scope of this report. Calculating rates based on the metropolitan Washington region's population or number of licensed drivers would not accurately represent the problem since drivers may be from outside the jurisdiction.

Data on people under the age of 21 years is collected in an inconsistent manner among jurisdictions. Caution must be used in evaluation of this data due to varied definitions and missing data.

Each chart displays two regional total numbers. The first, "DC Regional Total" is the total of the District of Columbia, the Maryland region, and the Northern Virginia region. The second regional number, "Regional Total Adjusted," includes data from the U.S. Park Police, which may not be available some years.

## Credits

The How Safe Are Our Roads? Report was prepared for the Washington Regional Alcohol Program (WRAP) by the Metropolitan Washington Council of Governments (COG). COG works with WRAP and other partners to compile the data and develop the report.