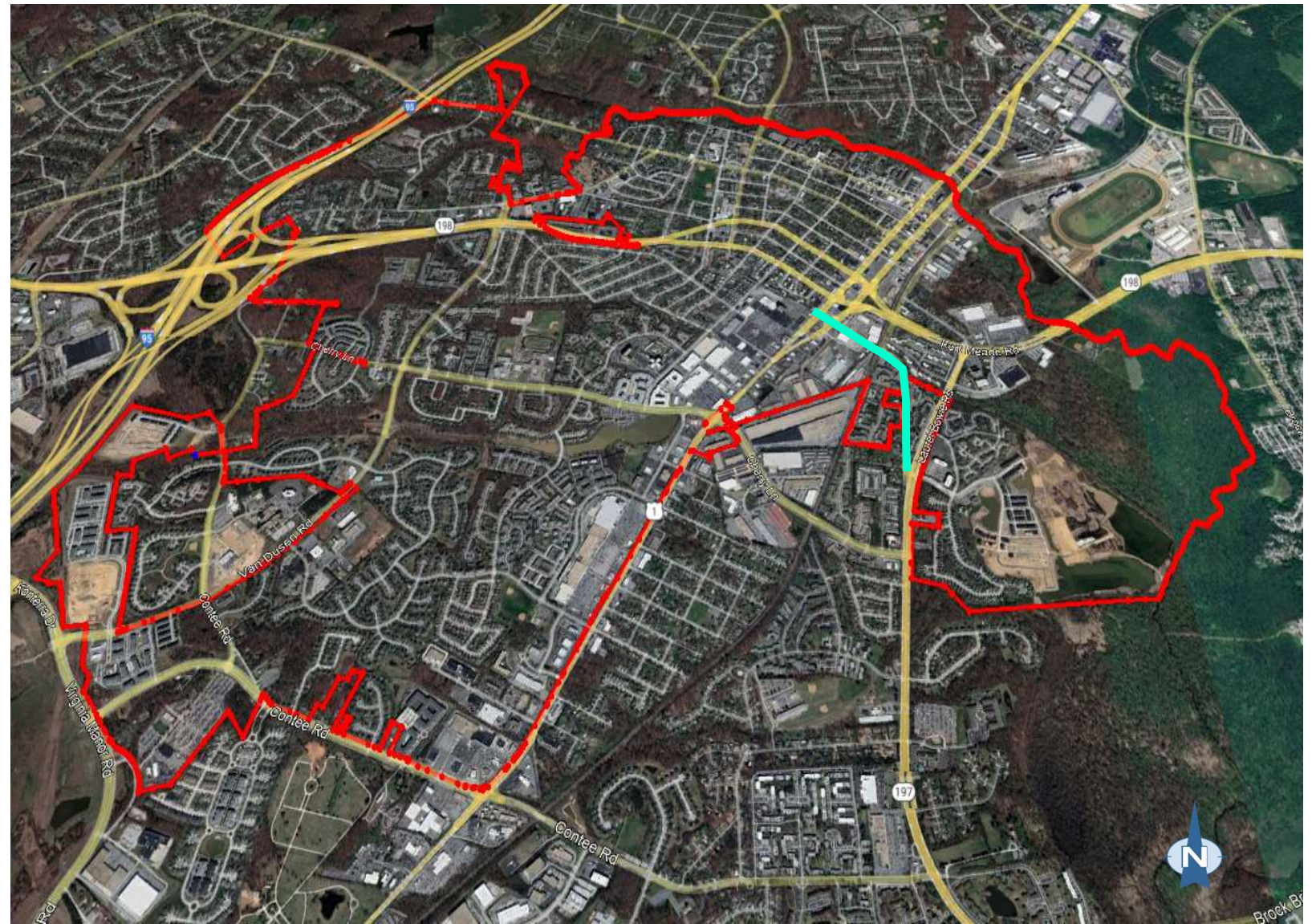


Bowie Road - Road Safety Audits (RSA)



Bowie Road Road Safety Audits (RSA)

- Why Bowie Road
- How RSA was conducted
- Audit Findings
- Action Plans



Reference Background Map – Google Earth

Why Bowie Road ?

- 0.7 Mile Roadway
- AADT 7,000 (pre-pandemic)
- Posted Speed Limit 25 MPH
- Bikeway Master Plan Route
- 28' Wide (in most sections)
- Mixed Use
- Laurel Rescue Squad
- High Pedestrian Activity
- 4 Traffic Signals
- Walkable to MARC Station



Map Source: CONNECT Explorer

Previous Improvements on Bowie Road

24-Hour Pedestrian Count
996 Pedestrian Crossing (2012)

- 2012 - Sidewalk Installation
- 2014 - Traffic Signal Installation
(Sidewalk and Ped Signal)
- 2017 - Sidewalk Installation

112 accidents in 2 years (LPD)

1 Pedestrian Fatality in 2020



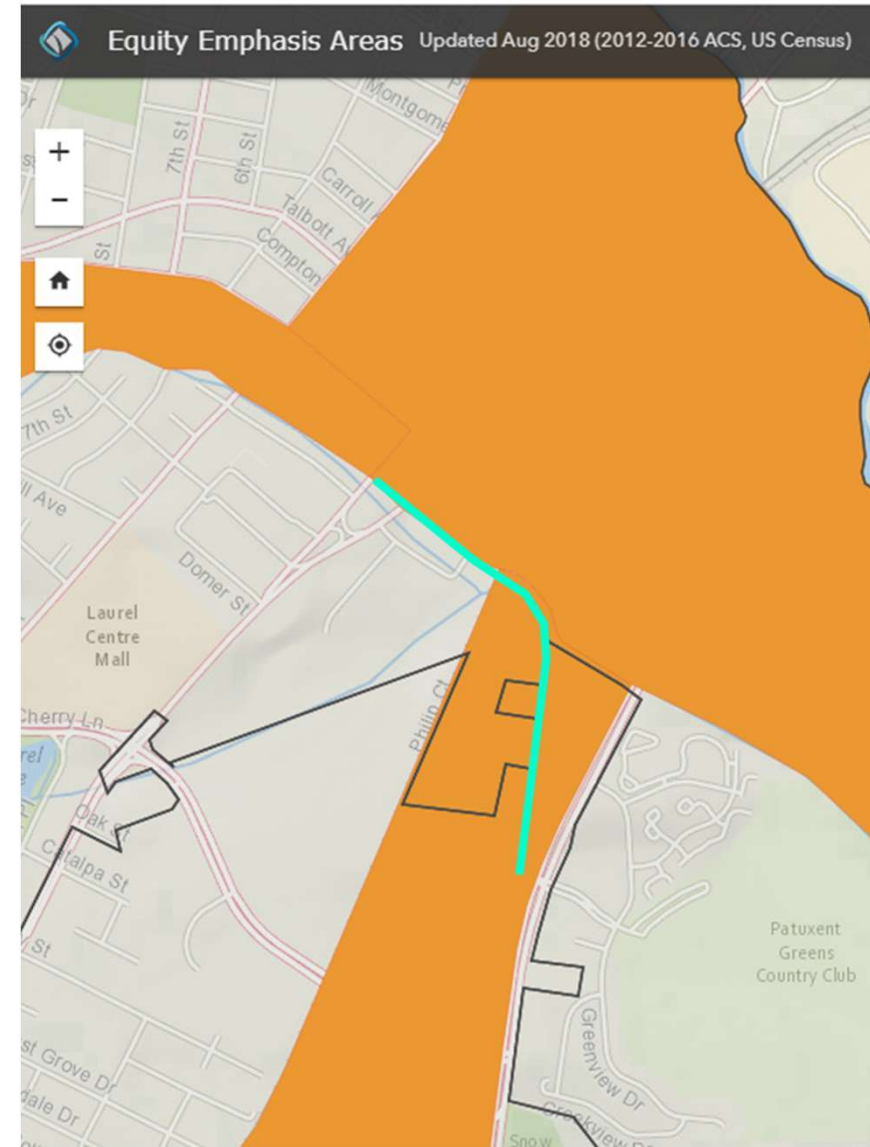
Metropolitan Washington
Council of Governments



National Capital Region
Transportation Planning Board

Regional Roadway Safety Program

Provide short-term consultant services to member agencies to address safety issues.



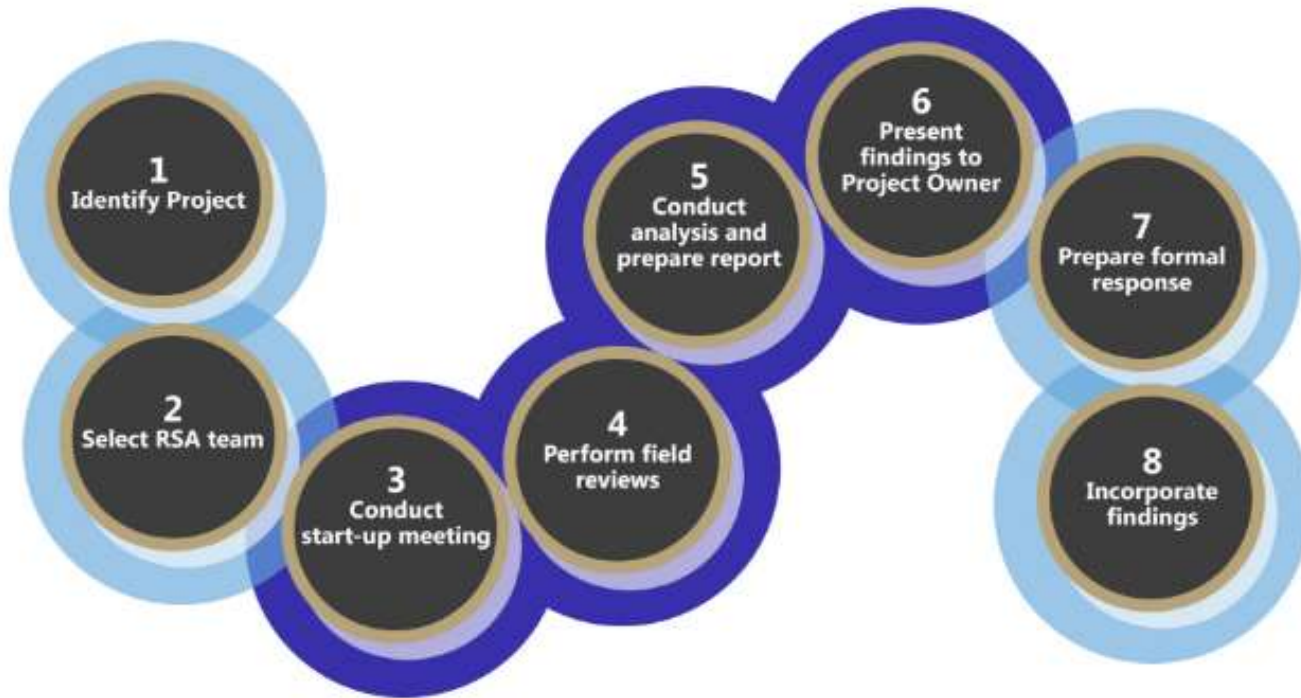
Reference Map – WMCOG EEA Map

Powered by esri

Road Safety Audits (RSA)

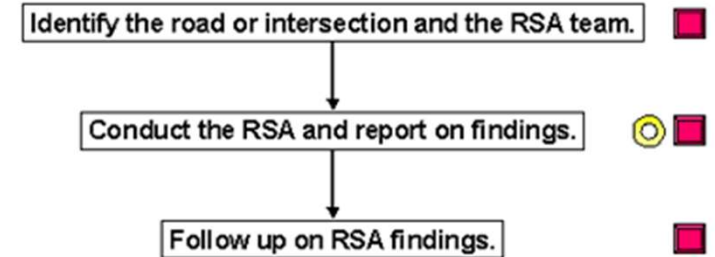
Responsibilities

-  RSA Team
-  Design Team / Project Owner



Typical Eight-Step RSA Process (Source: FHWA)

RSA Procedures



-  RSA team
-  public agency

Simplified Three-Step RSA Process (Source: FHWA)

- 24-Hour Speed & Volume Data Collection
- 3-Hour AM & PM Turning Movement Count Collection
- Pedestrian & Bicycle Activity Observation
- Crash Data Review
- Field Audit

Our Field Audit Team

- Maryland SHA D3 Office
- Prince George's County DPW&T
- COG National Capital Region Transportation Planning Board
- City of Laurel DPW
- Century Engineering & T3 Design
 - ✓ Traffic Safety
 - ✓ Road Design/Drainage Design
 - ✓ Pedestrian & Bike Operation
 - ✓ Traffic Control Device Design
 - ✓ Traffic Operation
 - ✓ Complete Streets



About 10 People

2 Surveys:

AM Peak and Midday

Goals

- Address Roadway Safety Issues
- Improve Roadway Safety for all Users
- Reduce Fatal/ Serious Injury Crashes
- Provide Safer Bikeway

Field Findings from the Audit



Deteriorating sidewalk



Shrubs overgrowing sidewalk

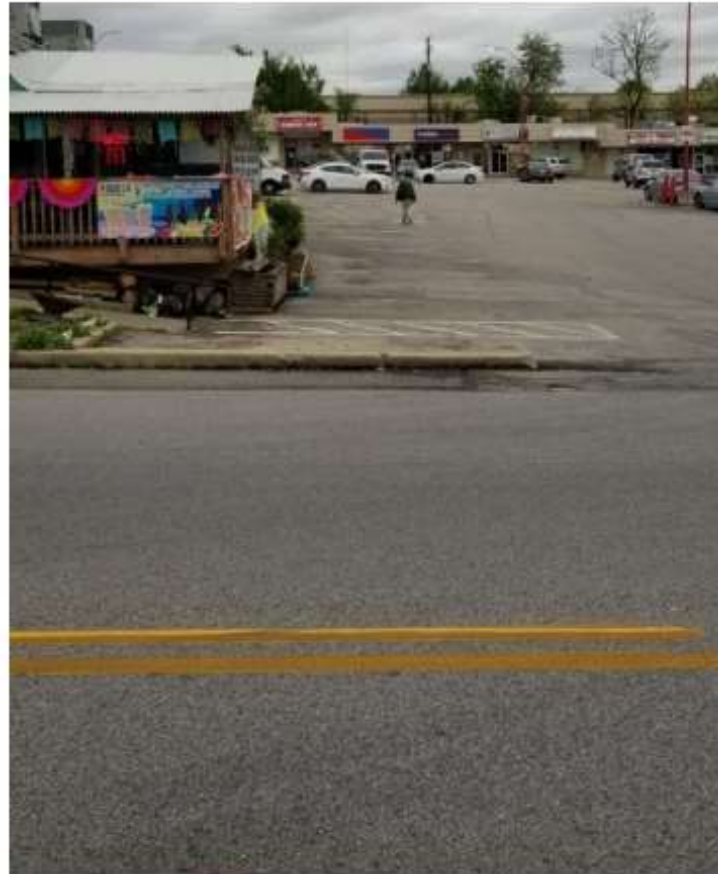


No ped crossing at north leg (NB US 1)

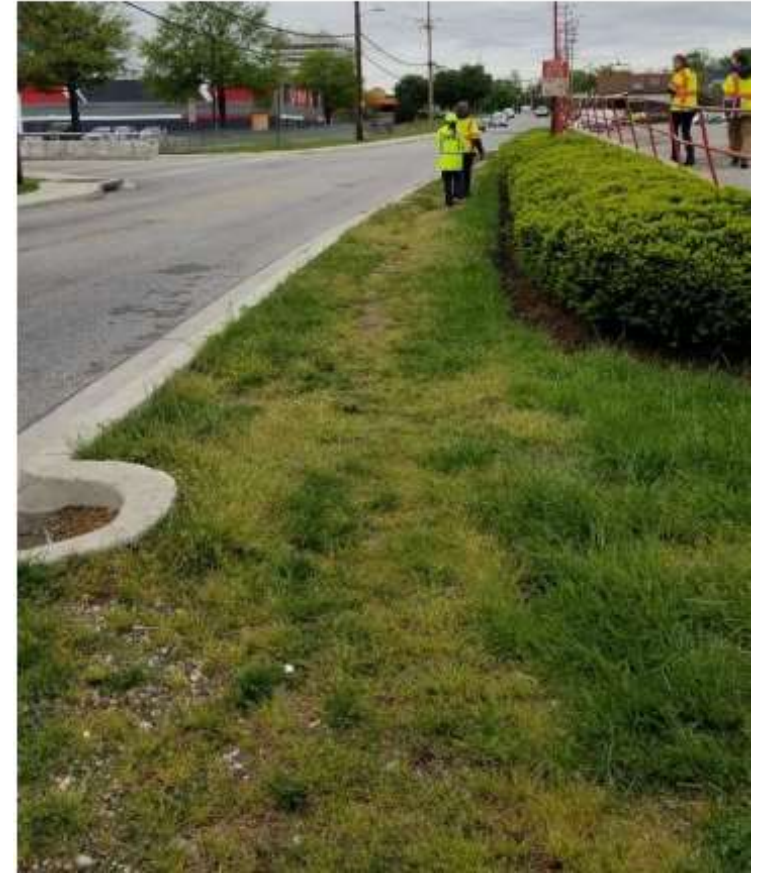
Field Findings from the Audit



Sidewalk only on one side



Sidewalk stop at the restaurant



No sidewalk adjacent to plaza/ supermarket

Field Findings from the Audit



Pedestrian not using sidewalk under CSX railroad bridge



Jaywalking through fence gap



Apartment entrance at mid-block

Field Findings from the Audit



Sidewalk pinch point (mailbox)



Sidewalk pinch point (mailbox)

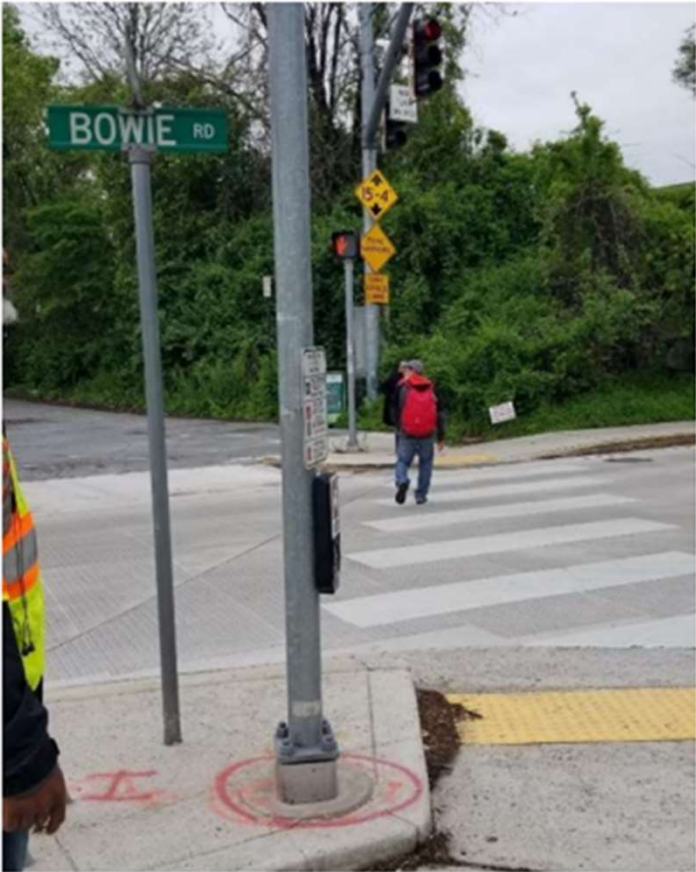


Sidewalk pinch point (manhole)

Field Findings from the Audit



Wide intersection w/o defined ped path
Tripping Hazard at storm drain inlet



Crosswalk not high contrast



Faded pavement marking

Field Findings from the Audit



Knock-down sign
Bus stop in the middle of intersection



Crash evidence
Unsafe crossing for bus riders

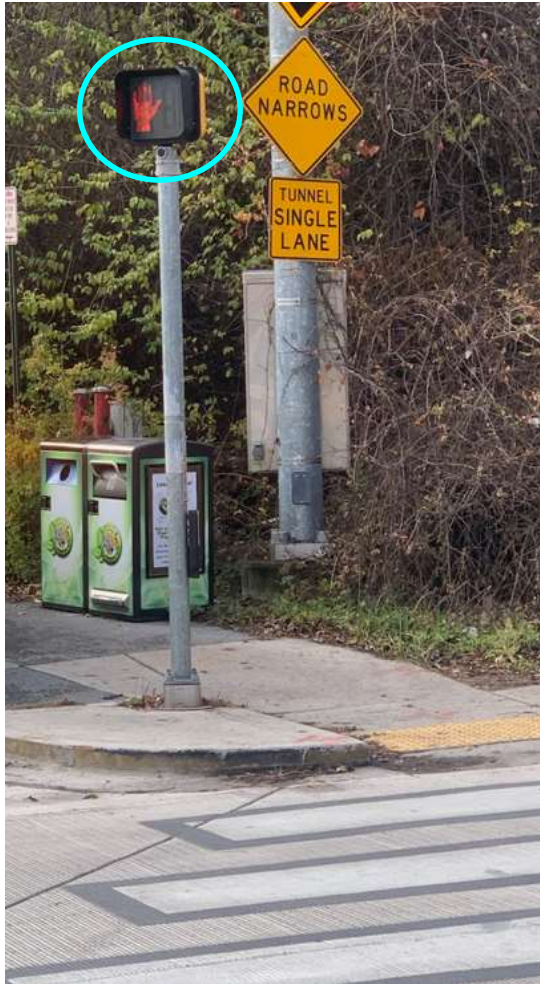


Damaged / collapsed guardrail

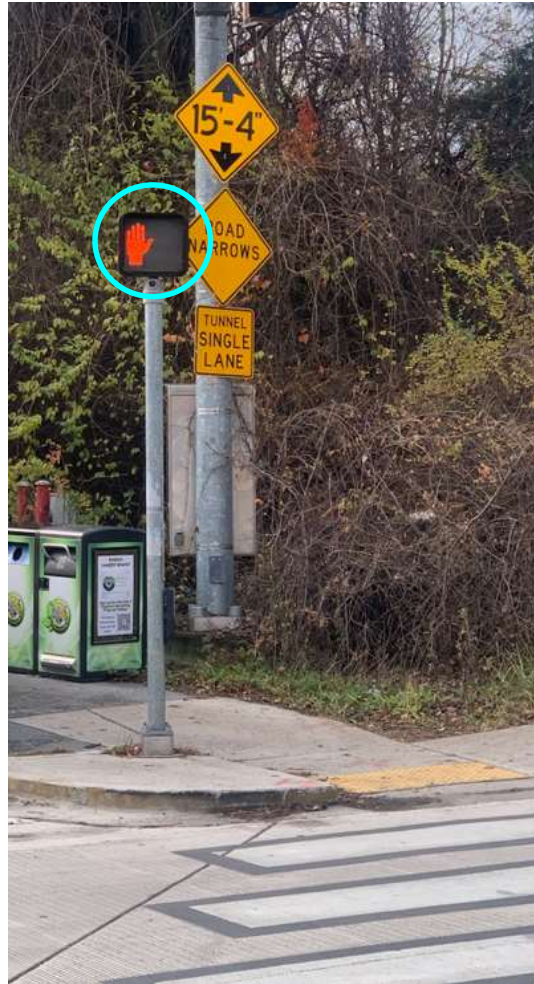
Suggestions & Actions from the Audit

- Trim vegetation near the sidewalks - **completed**
- Trim vegetation near the signs - **completed**
- Align pedestrian signal with crosswalk near the CSX bridge – **completed**
- Remove debris to eliminate tripping hazard - **completed**
- Upgrade crosswalk near the CSX bridge – **completed (Prince George's County DPW&T)**

Ped Signal Better Aligned with the Crosswalk



Before



After

Crosswalk in High Contrast



Before



After

Debris Removal



Before



After

Vegetation Trimming near Sidewalk



Before



After

Suggestions & Actions from the Audit

- Double yellow line adjustments - **ongoing**
- Add edge lines to narrow the lanes to calm traffic - **ongoing**
- Upgrade/install various signs along Bowie Road - **ongoing**
- Upgrade sidewalks and ADA ramps - **ongoing**
- Clean inlet to remove ponding water – **ongoing**
- Eliminate sidewalk pinch point – **under evaluation**
- Close fence opening at the apartment – **under evaluation (with apartment)**
- Install mid-block crosswalk & RRFB – **under evaluation**
- Add sidewalks on the other side of Bowie Road – **under evaluation**

Suggestions & Actions from the Audit

- Add street name sign and replace pedestrian pushbutton signs – **ongoing (with SHA)**
- Add intersection lighting – **ongoing (with SHA)**
- Extend all-red phase and adjust signal timing – **ongoing (with SHA)**
- Upgrade/repair signs and pavement markings – **ongoing (with SHA)**
- Curb improvements & guardrail upgrade – **ongoing (with SHA)**
- Relocate bus stop on MD 197 at Bowie Road intersection – **ongoing (with SHA & WMATA)**

Any Questions?



MDOT SHA
District 3 Traffic

MDOT SHA
Office of Traffic & Safety

Prince George's County
DPW&T

Thank you!