

Round 8.3 Cooperative Forecasts

Process and Review

Greg Goodwin, Regional Planner
MWCOCG Department of Community Planning &
Services

Cooperative Forecasting and Data
Subcommittee
January 14, 2014

Use of Round 8.3 Cooperative Forecasts

**2014 Air Quality
Conformity
Analysis**

**Transportation
Planning Board
Analysis**

**Activity Center
Update Analysis**

3 Major Refinements Include:

- 1. The city of Frederick will have Cooperative Forecast totals for the first time**
- 2. Montgomery and Prince George's Counties will make TAZ distribution modifications only**
- 3. New data for Anne Arundel, Carroll, and Howard Counties from the Baltimore Metropolitan Council (BMC Round 8).**

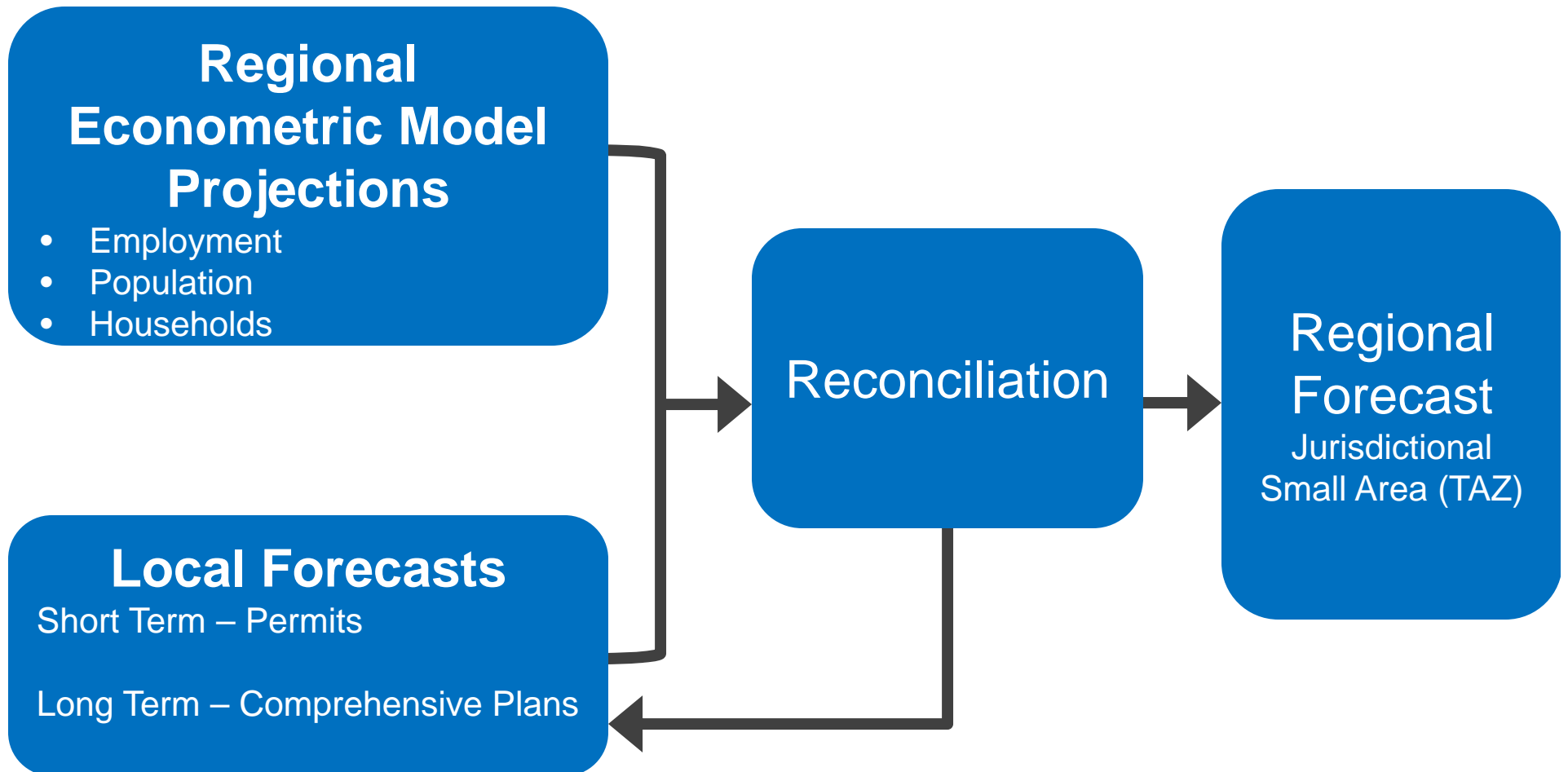
Round 8.3 *is voluntary*

Some jurisdictions chose not to make any changes

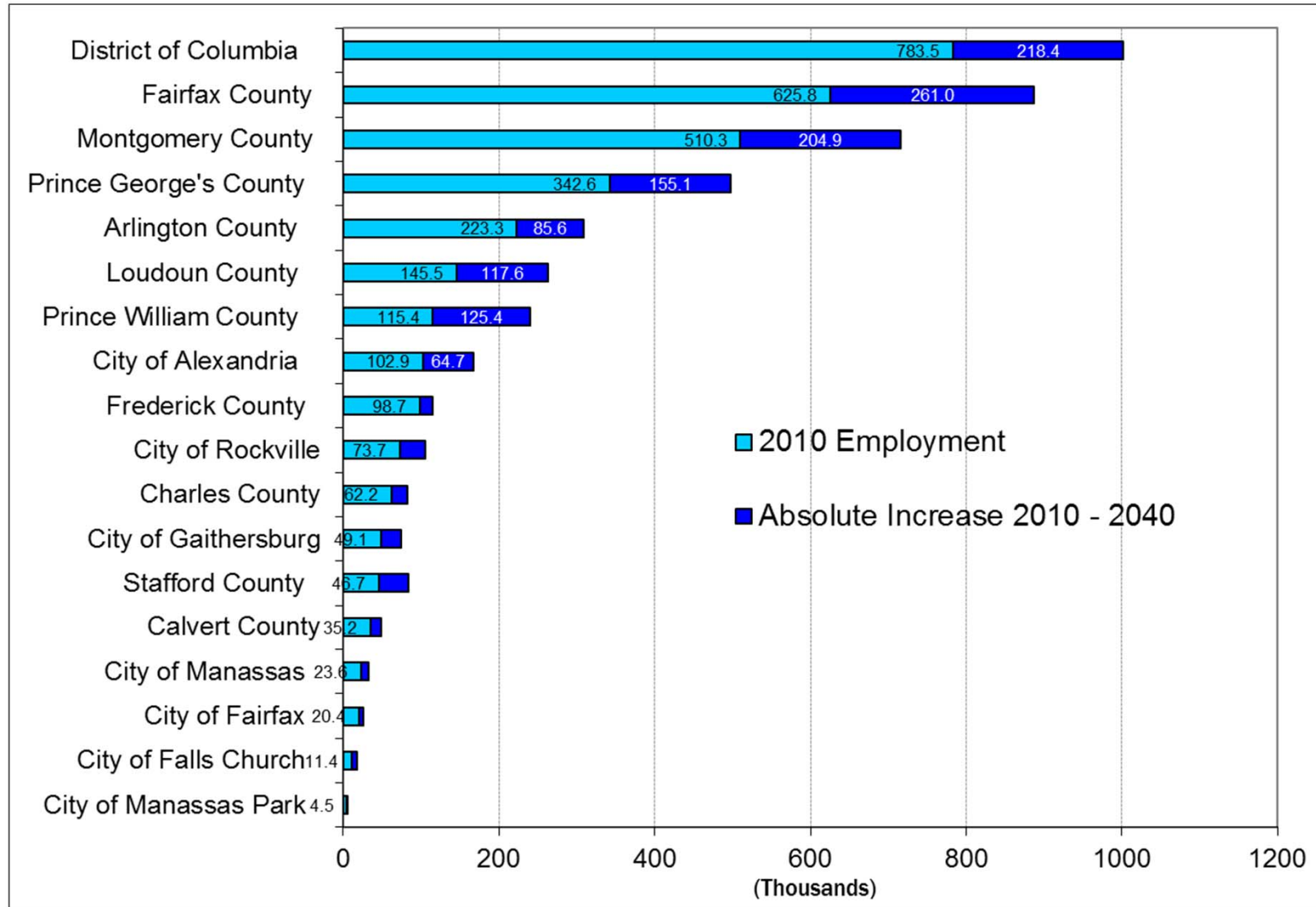
Three Jurisdictions Revised Their Control Totals:

- **District of Columbia**
- **Loudoun County**
- **Fairfax County (Employment Only)**

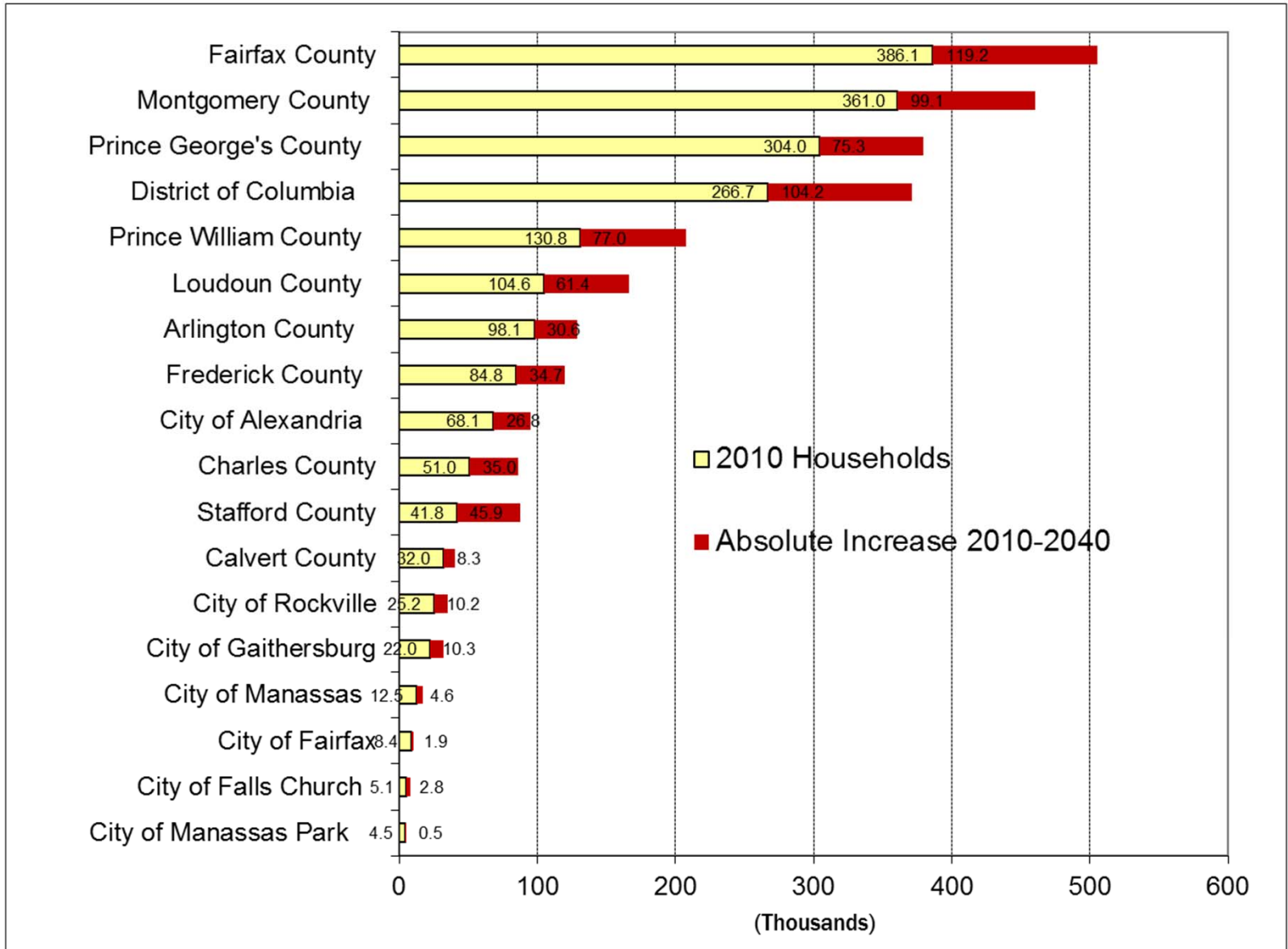
Cooperative Forecasting Process



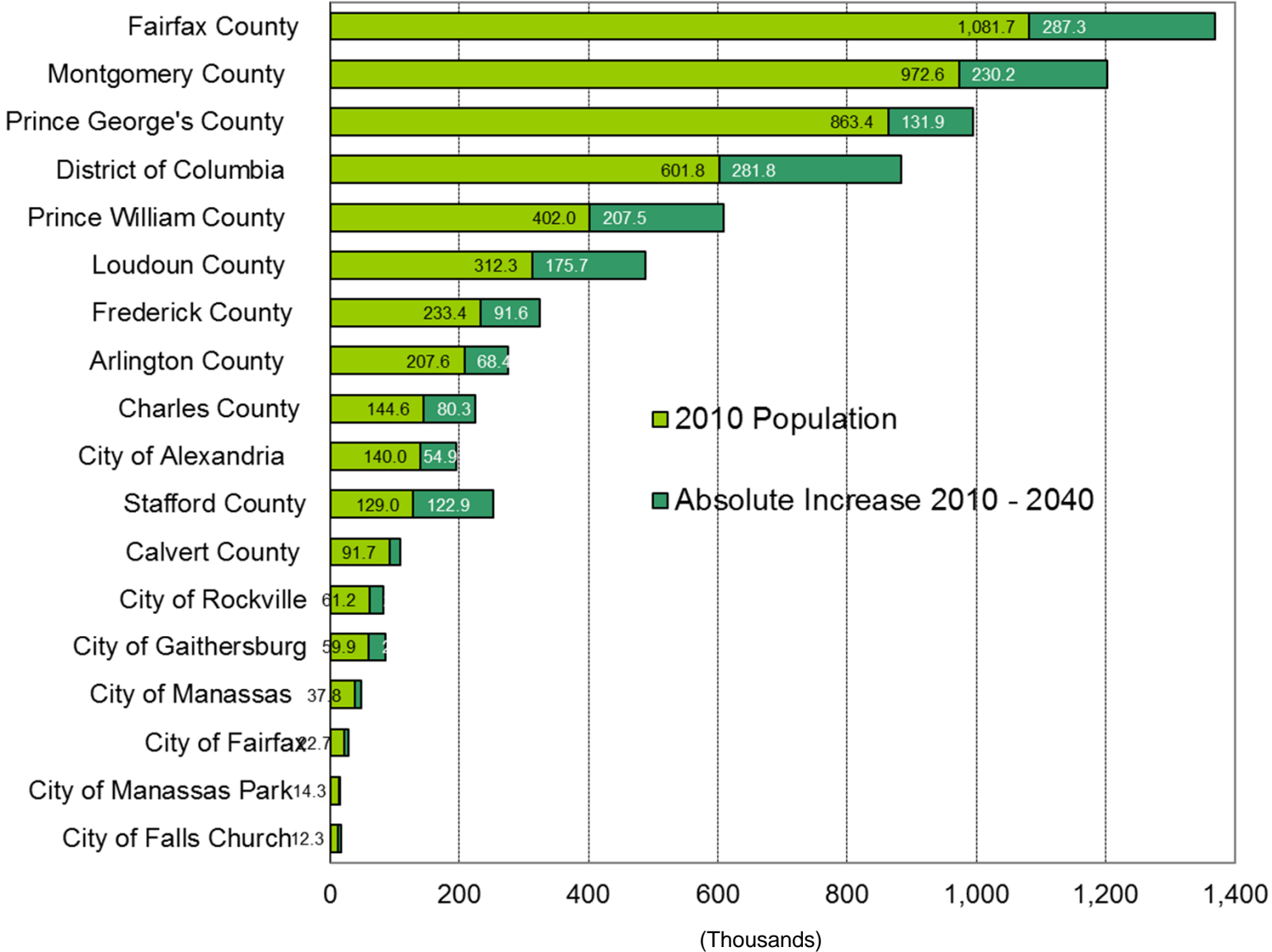
Employment 2010 - 2040



Households 2010 - 2040



Population 2010 - 2040



Econometric Model 2010 Forecast vs. 2010 Census

**The Round 8.0 Econometric Model was
developed in 2009 prior to the 2010 Census**

Econometric Model 2010 Forecast vs. 2010 Census

- **The 2010 Census has been incorporated in to all Round 8.3 Jurisdictional forecasts.**
- **To adjust the Econometric Model for this new input we propose adding the difference in Households and Population between the 2010 Census and the 2010 Econometric Model to each forecast year**

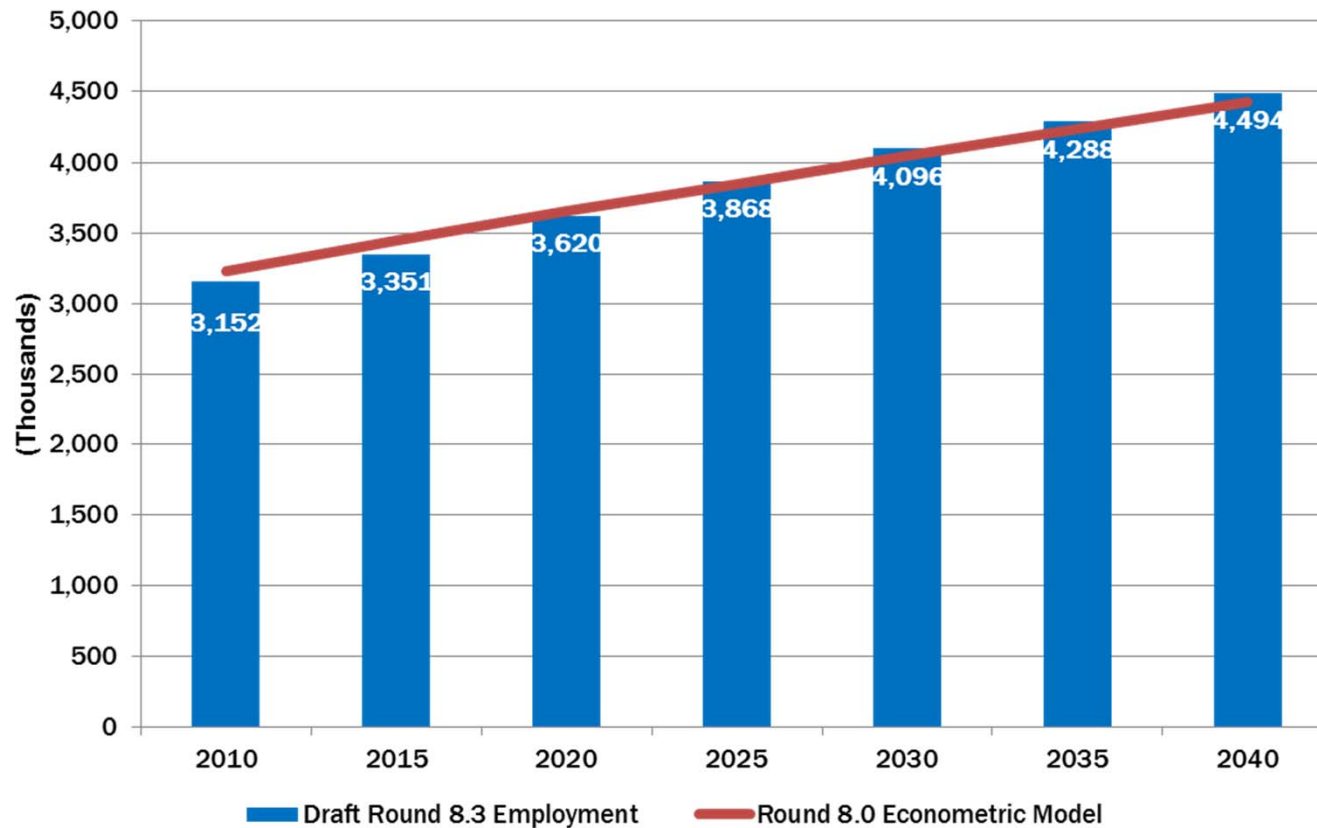
Econometric Model 2010 Forecast vs. 2010 Census

The difference between the 2010 Forecasts for the model and the 2010 Census Actual count was 42,300 households and 124,100 people.

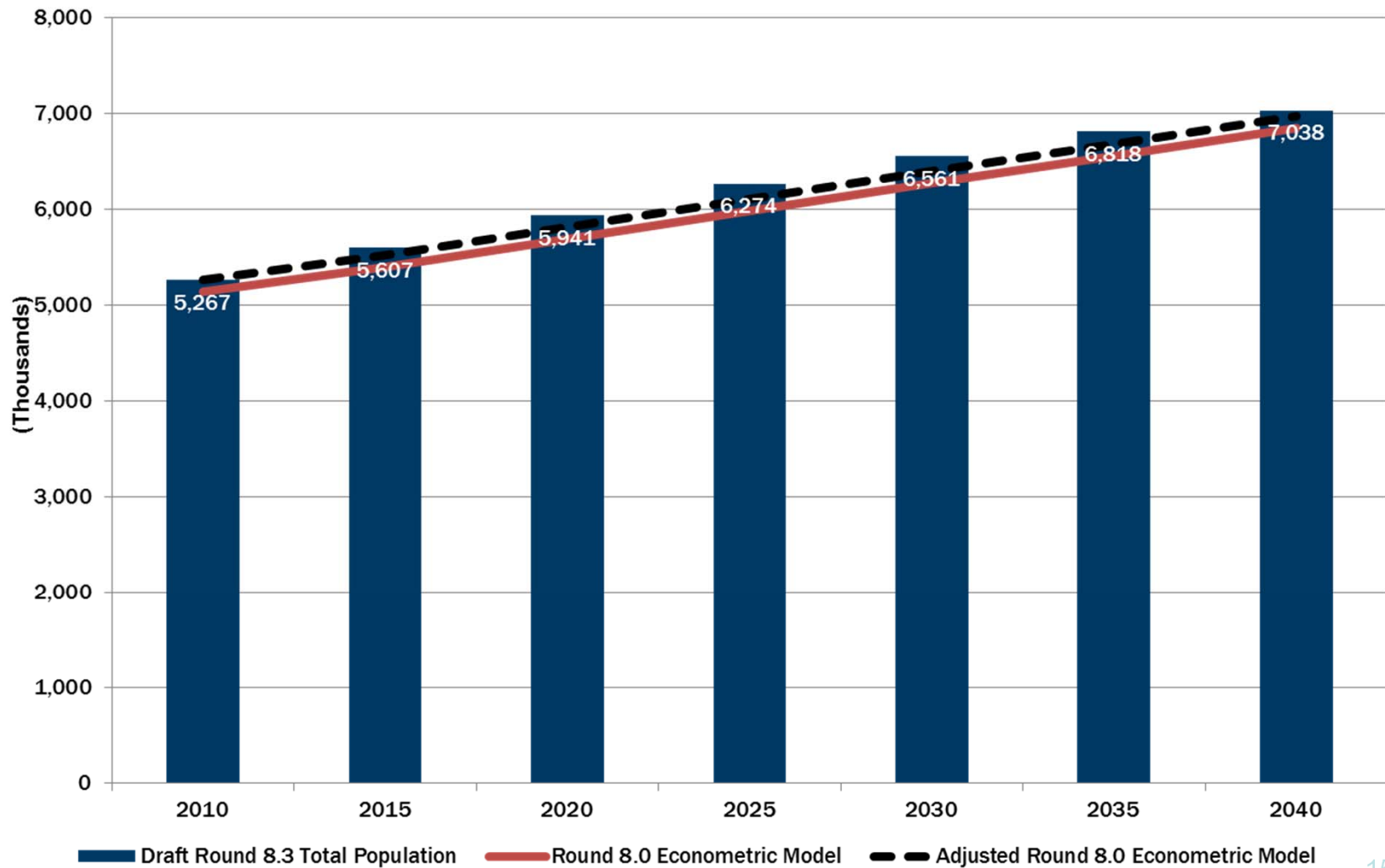
Econometric Model 2010 Forecast vs. 2010 Census

The dashed line on the following chart depicts how the relationship between the Forecast and Households using the upwardly adjusted Econometric Model

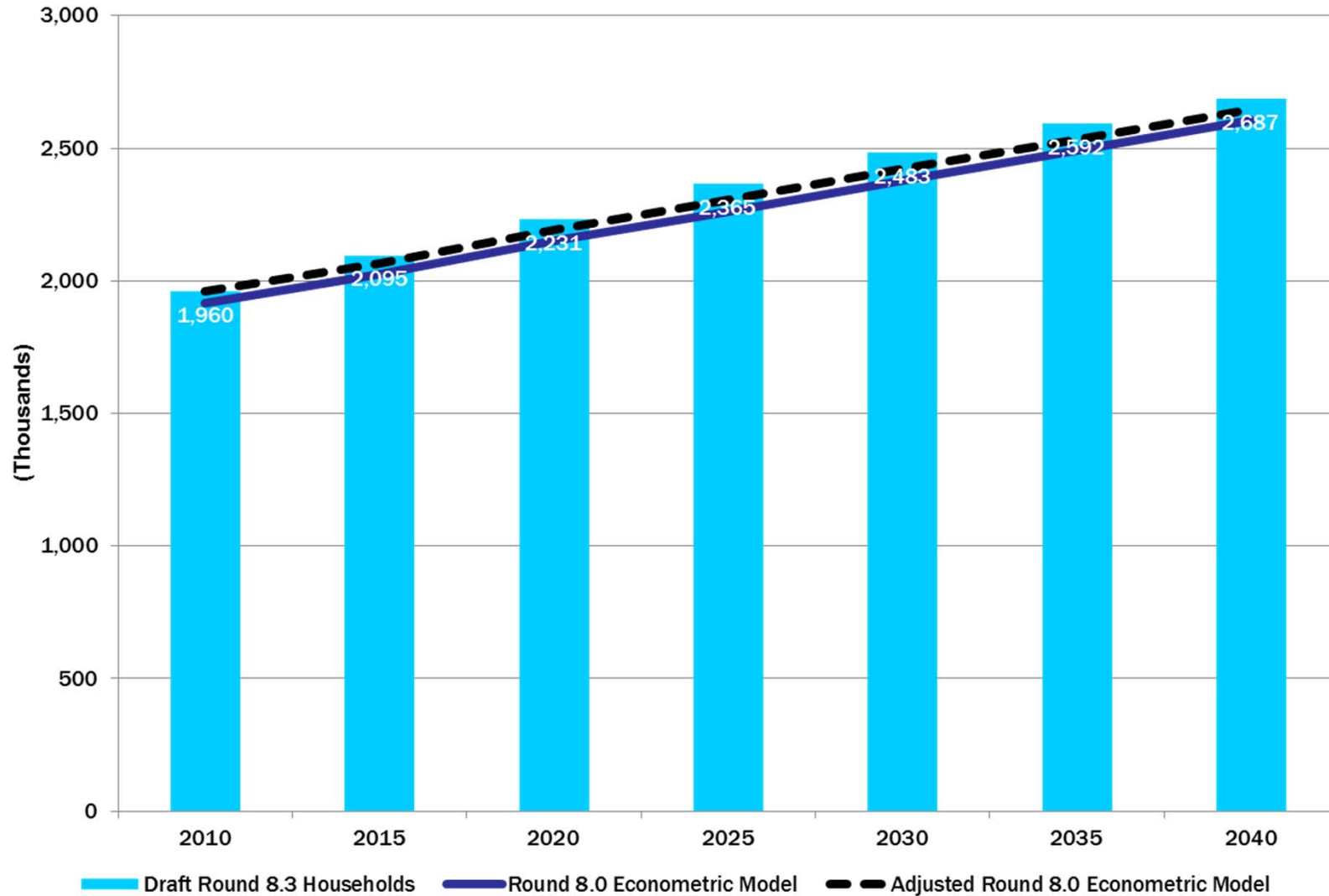
Employment 2010 - 2040



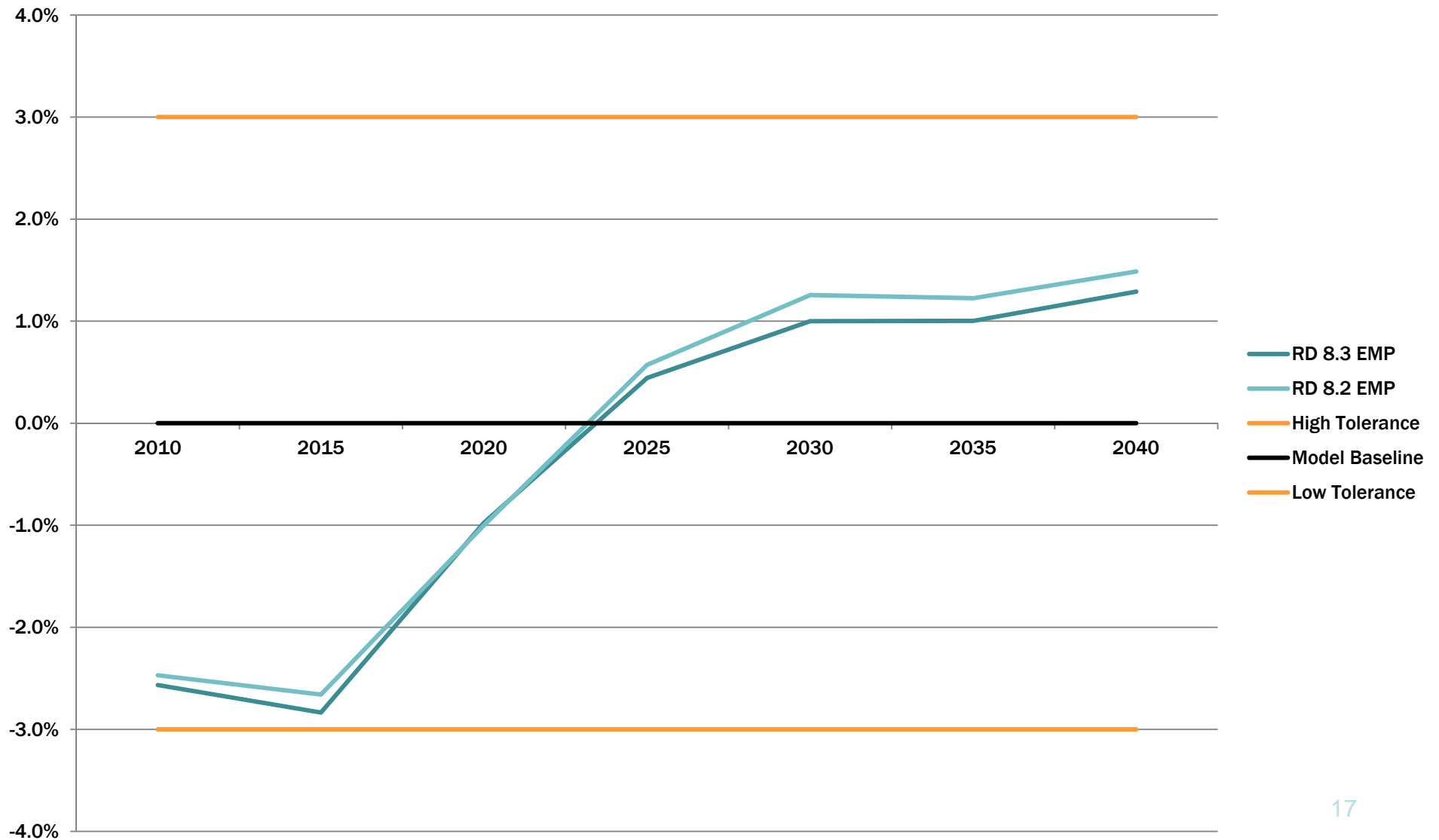
Population 2010 - 2040



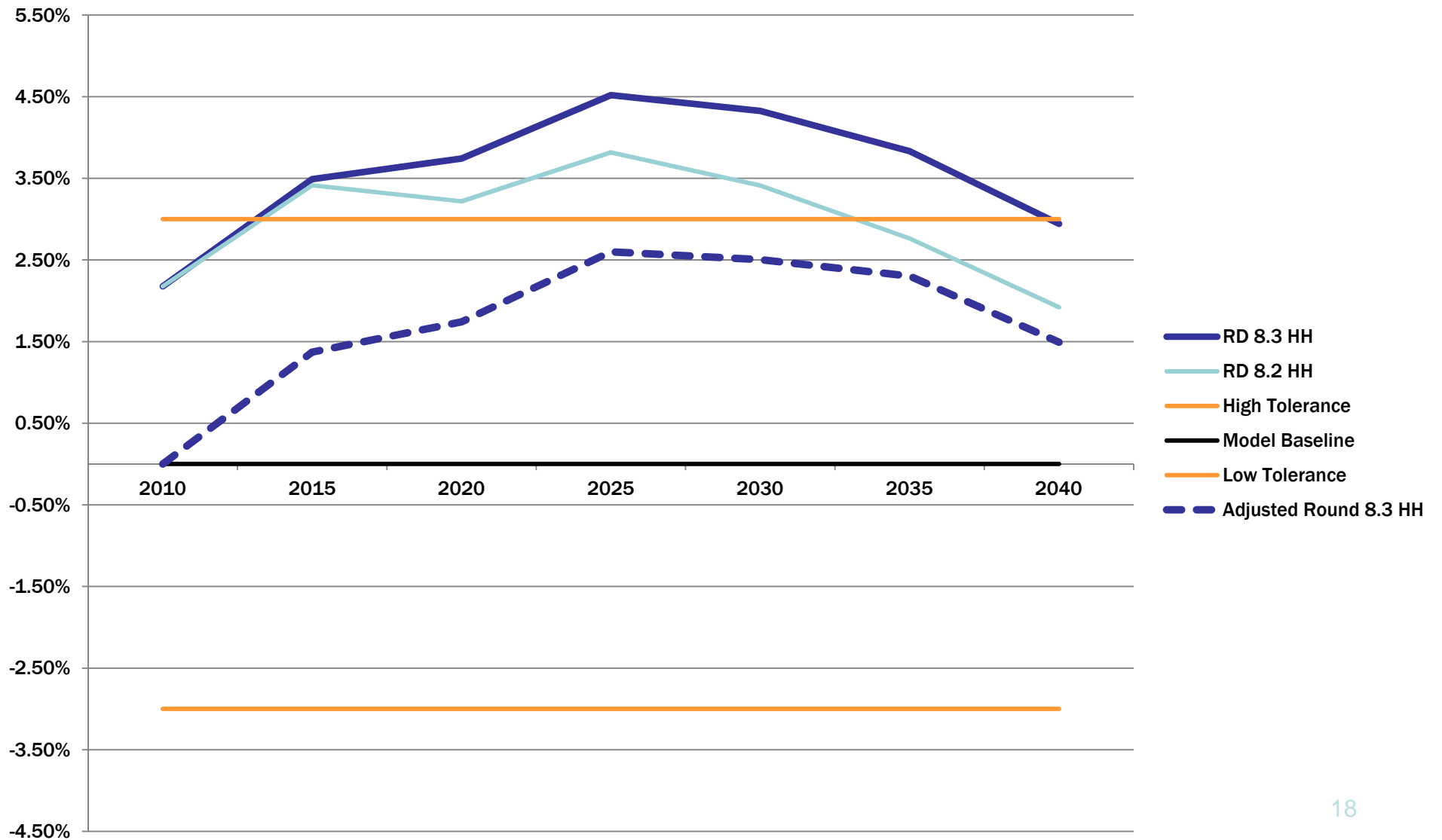
Households 2010 - 2040



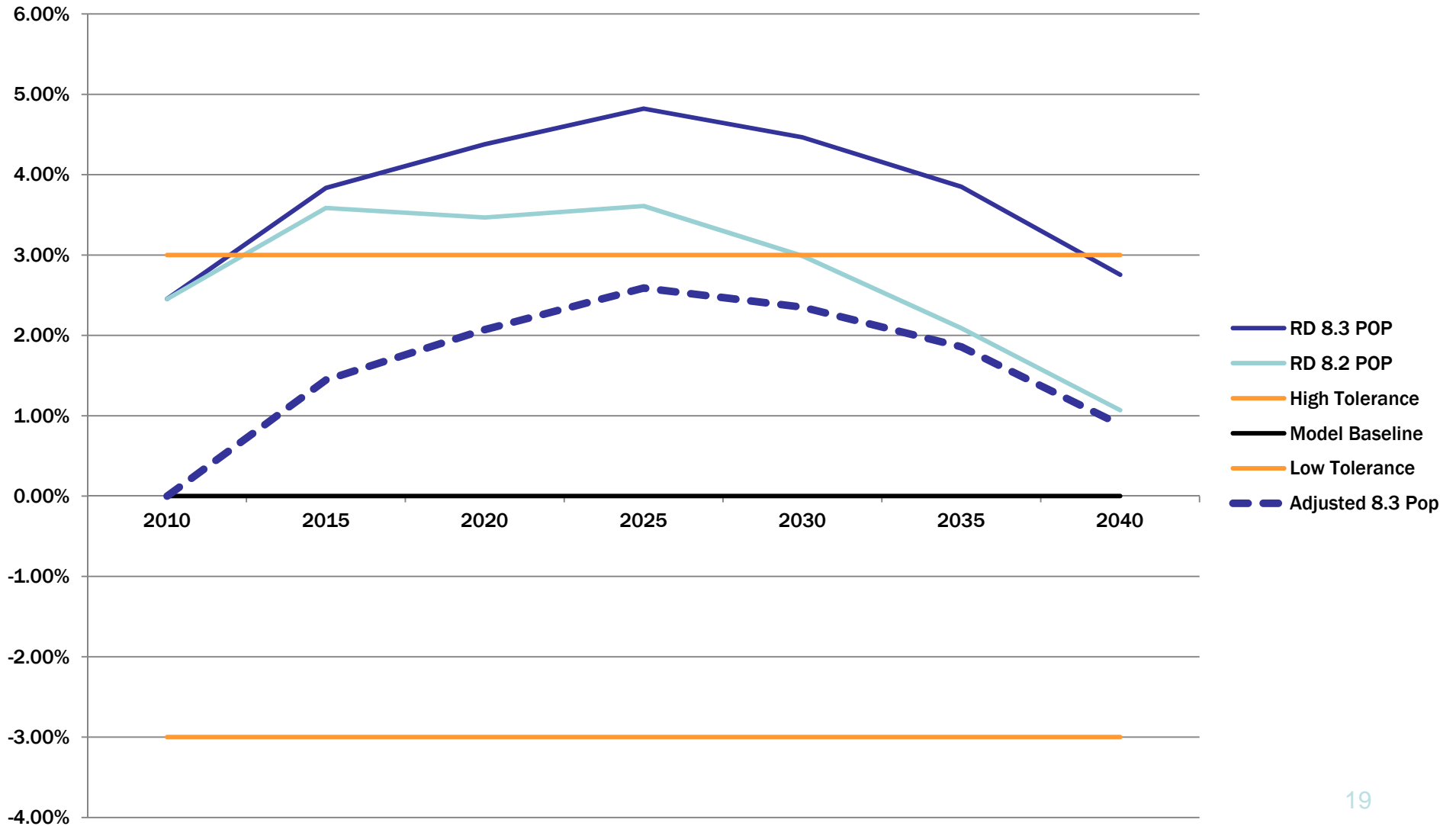
Comparison with Econometric Model Employment Forecasts



Comparison with Econometric Model Household Forecasts



Comparison with Econometric Model Population Forecasts



Next Steps

- 1. Local jurisdictions submit Round 8.3 forecasts by traffic analysis zone – End of January 2014**
- 2. COG Board will approve “Draft Round 8.3” for use in the Air Quality Conformity Analysis of the 2014 Update to the Financially Constrained Long-Range Transportation Plan (CLRP) FY 2015-2020 Transportation Improvement Program (TIP) – February 2014**
- 3. Final approval and adoption by the COG Board - July 2014**

Questions . . .