

COMMUNITY ADVISORY COMMITTEE

Orientation Q&A – Module 1

Bryan Hayes
TPB Transportation Planner

TPB Community Advisory Committee
February 11, 2021



CAC Orientation 3 Modules

Module 1 – About the TPB

- TPB: An Overview
- Unified Planning Work Program Simplified

Module 2 – About the CAC

- A brief history of the CAC
- CAC Mission
- Expectations for participation
- How to be an effective advisory committee

Module 3 – About Visualize 2045

- What is a long-range transportation plan?
- Plan elements
- How can the CAC help?



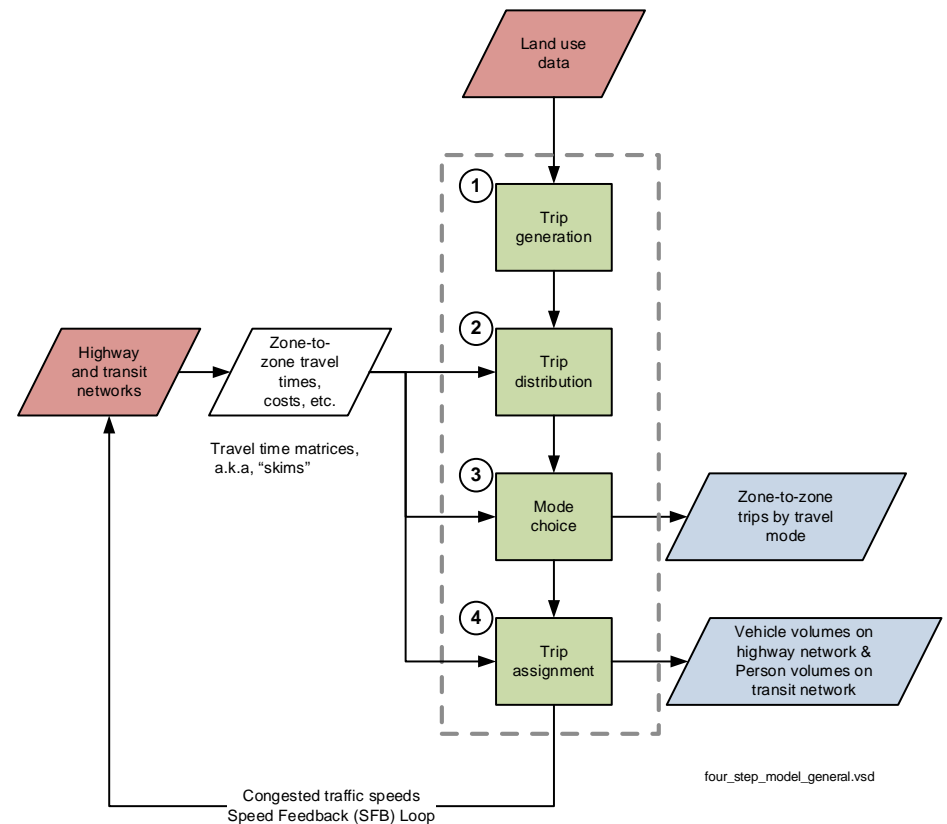
Questions

Can you please explain how travel monitoring and travel forecasting informs TPB and CAC actions?



Answer

- **Travel Monitoring**
A variety of survey methods are used to measure system performance
- **Travel Forecasting**
Models enable planners to forecast how travel behavior might change.



Questions

Has the TPB made any adjustments or changes to the long-range plan in response to the COVID-19 pandemic?

Has the TPB started any new work in response to the pandemic?



Questions

Who submits projects to the TPB to begin the Continuing, Comprehensive, and Coordinated process?



Questions

Do you have a cheat sheet that describes TPB functions?



Bryan Hayes

TPB Transportation Planner

(202) 962-3273

bhayes@mwkog.org

mwkog.org/tpb

Metropolitan Washington Council of Governments

777 North Capitol Street NE, Suite 300

Washington, DC 20002



National Capital Region
Transportation Planning Board