

UPDATE ON THE REGIONAL SAFETY STUDY

Safety Subcommittee
August 13, 2019



National Capital Region
Transportation Planning Board

Presentation Items

- Analysis of Regional Roadway Safety Outcomes
(aka: the Regional Safety Study)
- Future TPB Safety Agenda Items
 - State DOT Safety Updates
 - Regional Safety Study Updates
 - Regional Highway Safety Targets



Regional Safety Study – Objectives

- Understand factors contributing to crashes in the NCR
 - Behaviors, roadway characteristics, crash types, external factors
- Determine where crashes are over-represented
- Identify and recommend proven effective solutions (policy, programmatic, project)
- Provide the TPB and member jurisdictions specific suggestions to improve safety
- Inform future Transportation Safety Subcommittee and Street Smart efforts

Regional Safety Study - Tasks

Task 1: Project Kickoff and Scope Finalization



- Kickoff meeting
- Ongoing project coordination
- Scope of work
- Monthly progress reports



Task 2

Benchmark Peer Evaluation

- Identify three peer MPOs
- Conduct peer region interviews
- Draft and Final Summary Table



Task 3

Collection and Analysis of Safety Data

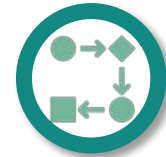
- Data Collection
- Data Analysis
- Draft and Final Crash Database and analysis results in excel format



Task 4

Synthesize Findings and Report Creation

- Draft implementation priorities, timelines, costs, and effectiveness
- Draft and Final Recommendations Table
- Outline and Preliminary figures for final report



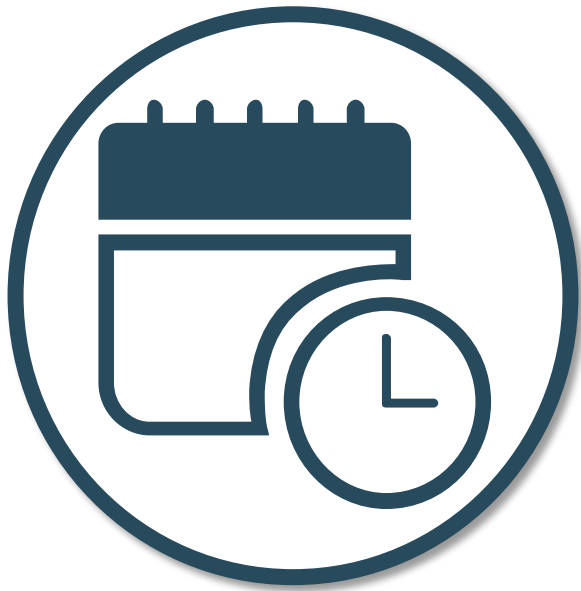
Task 5

Final Report and Presentation

- Draft and Final Report
- Draft and Final PowerPoint



Regional Safety Study – Task 1



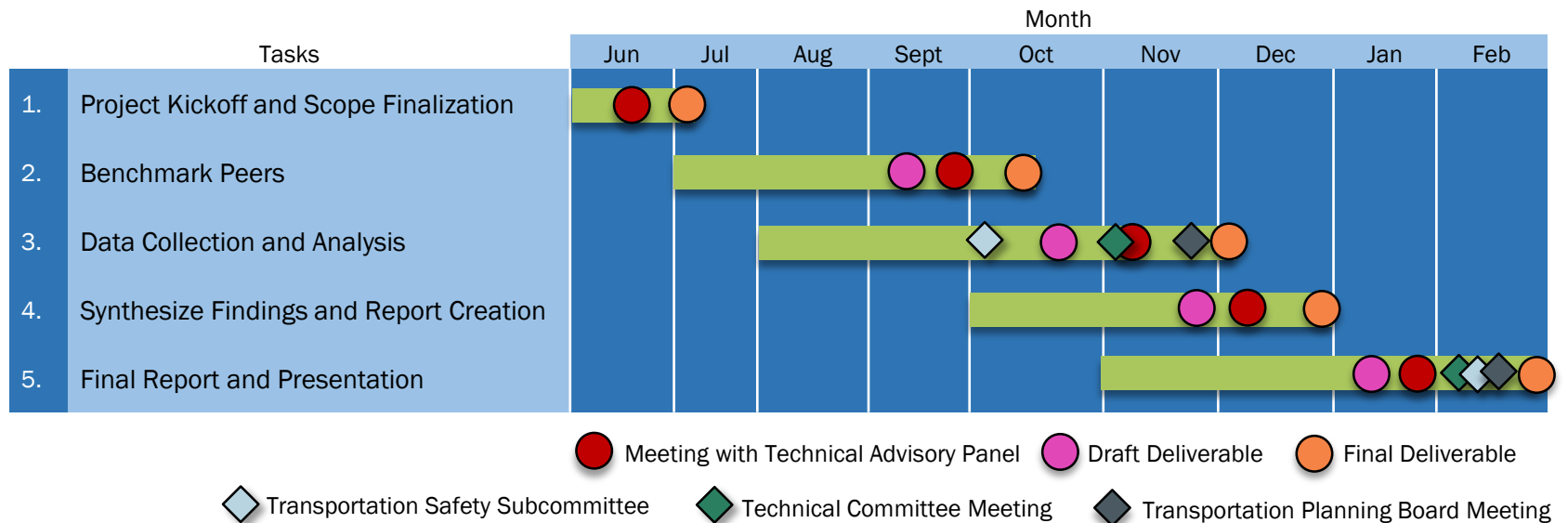
Task 1

Project Kickoff and Scope Finalization

- Kickoff meeting and summary
- Finalize scope of work
- Monthly progress reports
- Bi-weekly progress calls
- TAP engagement



Regional Safety Study - Schedule



Regional Safety Study – Task 2



Task 2

Benchmark Peer Evaluation

- Evaluation criteria
- Proposed peers
- Interview questions



Regional Safety Study – Task 2

Proposed Selection Criteria:



MPO Size



Institutional Structure



Access to Safety Funding/Ability to Fund Safety Improvements



Safety in the Project Prioritization Process



Performance Targets



Regional Safety Study – Task 2

- **East-West Gateway Council of Governments (St. Louis)**
 - Strong recognition of safety in MTP
 - Safety Initiative to track progress toward performance goals
 - No vision zero policy, but goal of zero fatalities
 - Focus on bicycle and pedestrian safety
 - Bi-state MPO
- **Delaware Valley Regional Planning Commission (Philadelphia)**
 - Strong focus on safety analysis and planning
 - Vision Zero policy and approach
 - Similar transit and bike/ped amenities
 - Similar population size to TPB
 - Bi-state MPO



Regional Safety Study – Task 2

- **Metropolitan Transportation Commission (San Francisco)**
 - Complete Streets checklist
 - Regional Health and Safe Communities Plan
 - Vision Zero policy and approach
 - Similar transit and bike/ped amenities and safety focus for these modes
 - Similar population size to TPB
- **Southeast Michigan Council of Governments (Detroit)**
 - TZD Traffic Safety Plan
 - Educational safety campaign (Walk Bike Drive Safe)
 - Moderate focus on transit, bicycle, and pedestrian safety
 - Similar population size to TPB



Regional Safety Study – Task 2

- **Atlanta Regional Commission (Atlanta)**
 - Safe Street for Walking and Bicycling Plan
 - City of Atlanta Safer Streets Report (performance focused)
 - Regional Safety Task Force developing safety plan (performance focused)
 - Similar population size to TPB and growing



Regional Safety Study – Task 2

- East-West Gateway COG
- Delaware Valley RPC
- Metropolitan Transportation Commission



Regional Safety Study – Task 3



Task 3

Collection and Analysis of Safety Data

- Data Collection
 - Data needs vs availability
 - Data review meetings
- Data Analysis



Regional Safety Study – Task 3

- Data Collection Elements
 - Crash data
 - Traffic and roadway data
 - Populations and demographics
 - Project locations, land use, and infrastructure locations
 - Existing analysis



Regional Safety Study – Task 3

1) Benchmarking

5 Year Crash Trends

- By Jurisdiction
- By Maintaining Authority
- By Roadway Classification
- By Severity

Crash Maps

- Regional
- By Jurisdiction
- Total crashes
- Severe crashes

2) Crash Type/Contributing Factor

Crash Type Trends

- By Severity
- By Jurisdiction
- Systemic countermeasures

Contributing Factor Trends

- By Severity
- By Jurisdiction
- Regional emphasis areas and countermeasures



Regional Safety Study – Task 3

3) Priority Locations

Network Screening

- Create Methodology
 - Crash history
 - Focus facilities or surroundings
 - Infrastructure risk factors
- Identify and Prioritize Safety Locations

Priority Lists and Maps

- Visualize Priority Locations



Regional Safety Study – Task 4



Task 4

Synthesize Findings and Report Creation

- Recommendations
- Draft and Final Recommendations Table



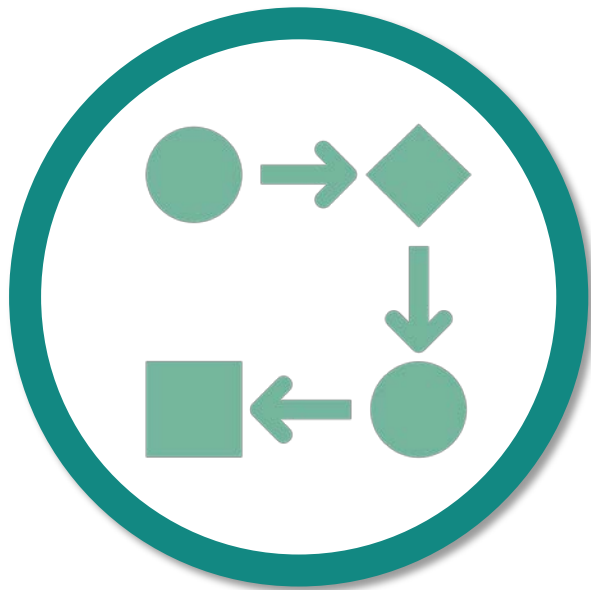
Regional Safety Study – Task 4

Implementation will be addressed through:

- Culture/Organization
- Policies
- Project Submission and Prioritization
- Contributing Factors
- Priority Locations
- Systemic Solutions



Regional Safety Study – Task 5



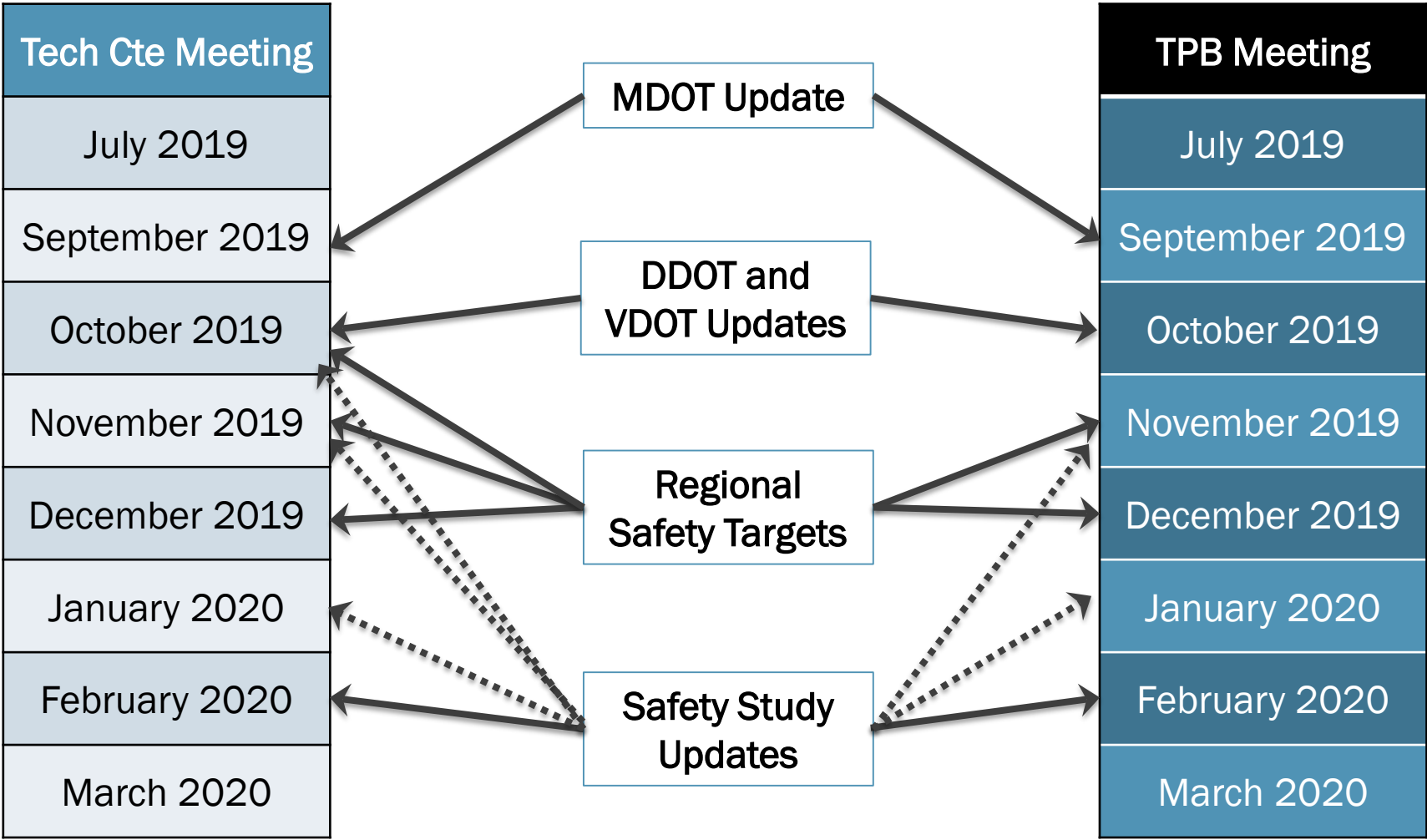
Task 5

Final Report and Presentation

- Draft and Final Report
- Draft and Final PowerPoint



TPB Safety Agenda Items



Jon Schermann

TPB Transportation Planner

(202) 962-3317

jschermann@mwkog.org

Nicole Waldheim

Cambridge Systematics, Inc.

(301) 347-9132

nwaldheim@camsys.com

mwkog.org/tpb

Metropolitan Washington Council of Governments

777 North Capitol Street NE, Suite 300

Washington, DC 20002



National Capital Region
Transportation Planning Board