

New Air Quality Planning Guidance

Joan Rohlfs

MWAQC

December 14, 2005





EPA's Guidance Released- finally

- 8-Hr Ozone Implementation Guidance
 - 8-Hr Ozone Attainment Modeling Guidance
 - PM_{2.5} Implementation Guidance (proposed)
-
- Released in November 2005

New Ozone Planning Requirements

- 2002 Baseline Emissions Inventory due 6/06
- Reasonable Further Progress (RFP)
- Weight of Evidence
- Reasonably Available Control Measures (RACM)
- Reasonably Available Control Technology (RACT)
- Modeling and Attainment Demonstration

Background

- Washington region designated moderate nonattainment for 8-hr ozone standard 1/04
- Attainment Deadline: June 2010
- SIP due June 2007

Attainment Demonstration: Timing

- Moderate areas required to attain 5-6 years after designation
 - June 15, 2004 – June 15, 2010
 - Attainment must be demonstrated by the end of the 2009 ozone season, September 2009
 - All measures must be implemented by May 2009 (start of ozone season)

What if region can't show attainment by 9/09?

- Region can get a one-year extension (2010) by requesting a bump-up to serious
- Additional ROP reductions must be demonstrated
- Other requirements (met in 1-Hr Ozone SIP)



Reasonable Further Progress

- Reasonable Further Progress plan must show 15% reduction, 2002-2008
- RFP is submitted as part of plan (SIP)
- Plan will establish motor vehicle emissions budgets for both 2008 and 2009

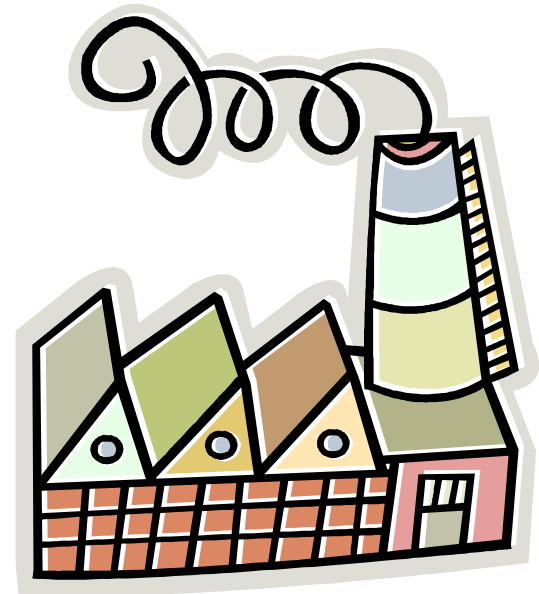
Reasonable Available Control Technology (RACT)



- Major Sources must be certified by 9/06
- Major source defined as 100 ton per year (tpy)
- In Washington region, major sources are defined as 25 tpy because of 1-hour ozone designation.

New Source Review (NSR)

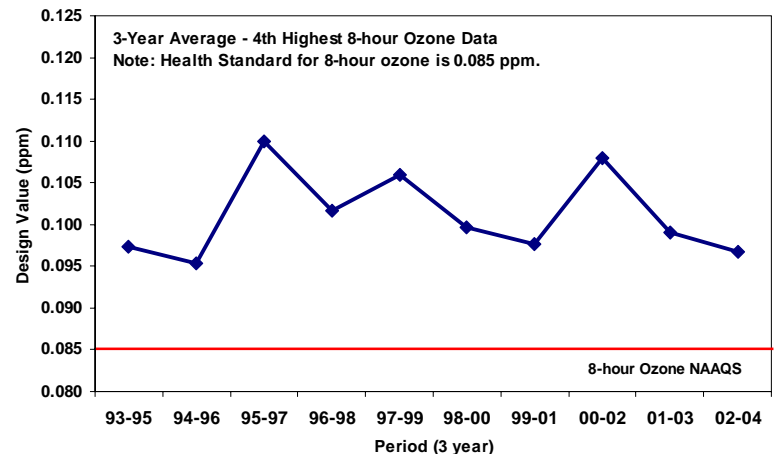
- Basic program requirements:
 - 1:1 offsets
 - 100 tons per year



Reasonably Available Control Measures (RACM)

- Must advance the attainment date by one year (June 15, 2008)
- Region would reduce ozone levels to 85 ppb during the 2008 ozone season

Figure 8: 8-hour Ozone Design Values
Washington, D.C. Region, 1993-2004



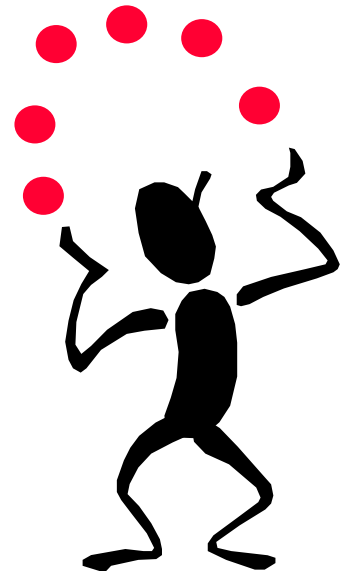
Attainment Demonstration



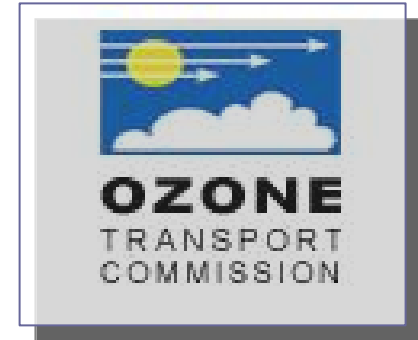
- Attainment Demonstration must show the control strategy achieves design values below 85 ppb by Sept. 2009
- No Midcourse Review if attain in 6 years
- Modeling episodes from 2002 ozone season
- Weight of Evidence: use of AQ data to project attainment

Factors Affecting SIP Schedule

- Additional SIP Requirements (2002 final inventory, RFP, RACT, RACM)
- Attainment Modeling on Broad Regional Scale (NE, Mid Atlantic, MidWest)
- OTC Control strategy adoption
- OTC Model Rules developed (6/06)

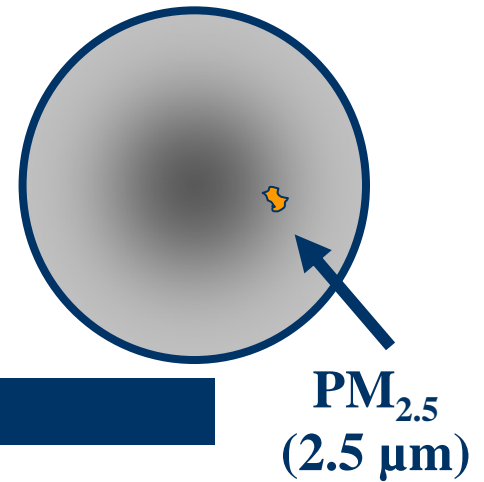


Why work with OTC?



- East, Mid-Atlantic, South East and Mid-Western states have similar air pollution problems
- EPA's Clean Air Interstate Rule (CAIR) does not get Washington region to 8-hr ozone attainment by deadline
- Consortium of states agree that more measures are likely to be needed for attainment

PM_{2.5} Implementation



- Attainment date is 2010
- PM_{2.5} SIP due April 2009
- Plan (SIP) must address PM direct, SO₂ and NO_x
- States/EPA may add ammonia and VOC if they are determined to be significant contributors to the problem



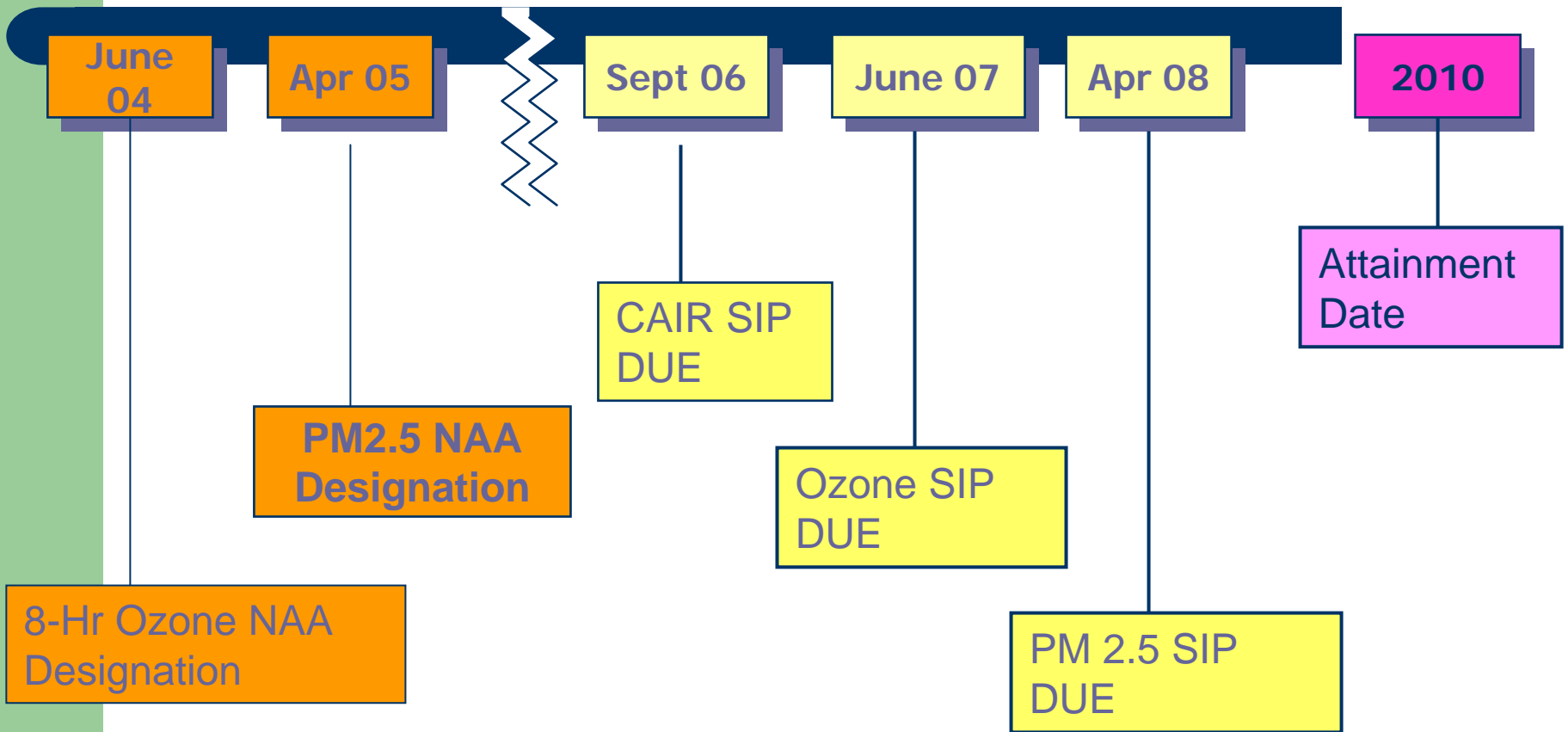
CAIR Rule

- CAIR modeling shows Washington region meets PM_{2.5} standard by 2010
- Washington region modeling needs to be completed to confirm
 - Different assumptions may be used re EGUs
 - May produce different results

8-Hr Ozone & PM2.5 Planning

- Similar attainment deadlines
- Modeling being done by Regional Planning Organizations
- Technical analysis will be done at same time for both
- Plans (SIP) will be done separately

Washington Region SIP Deadlines



Changes to SIP Planning Schedule

- Final 2002 Inventory due to EPA, 6/06
- Develop 2008 emissions inventory for RFP
- RFP analysis for 2008
- Attainment modeling tied to OTC modeling schedule



Ozone SIP Schedule

- SIP approved for public hearing, 7/06
- Public Hearing, Summer 2006
- MWAQC approves SIP in Fall 2006
- MWAQC transmits SIP to IAQC
- States submit SIP to EPA in early 2007

Deadline: June 15, 2007

