

# GOVERNMENT SHUTDOWN

---

## Update on Regional Coordination, Analysis

Chuck Bean  
COG Executive Director

Human Services Policy Committee  
January 11, 2019

# Government Shutdown

---

How many workers are affected?

1. 361,000 federal workers in the region (BLS)

Partial = ~40% impacted (145,000 workers) (Fuller)

2. More than 400,000 contracted employees (Fuller)

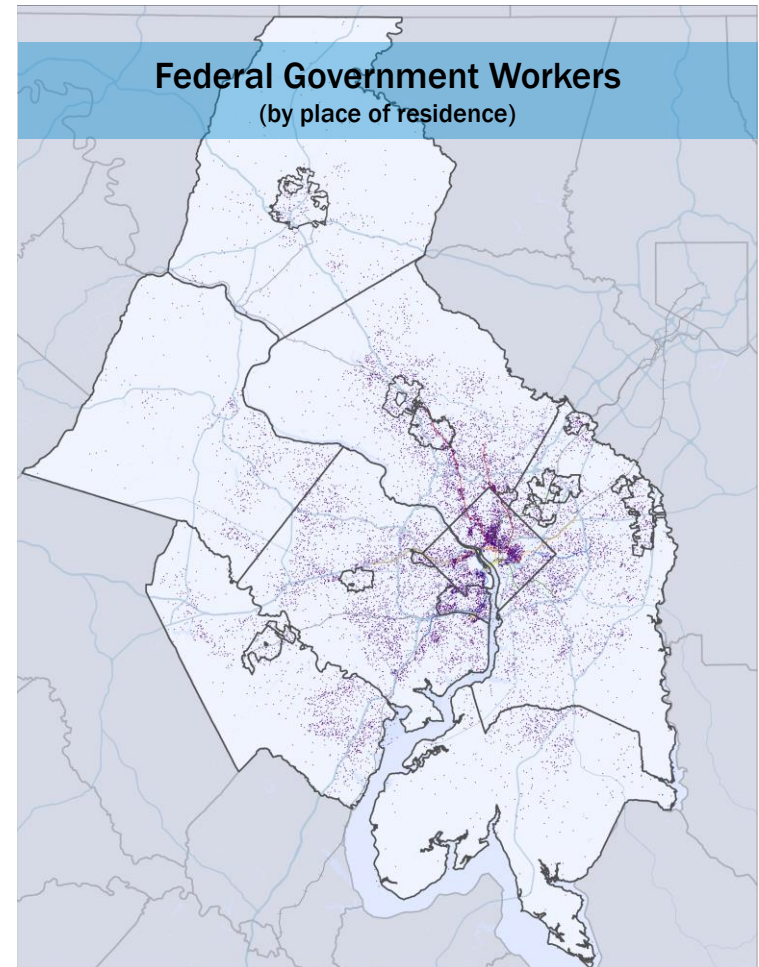
Partial = assuming another ~40% impacted (160,000 workers)

3. Service economy workers supporting federal agencies, contractors, and workers

# Government Shutdown Analysis

Where do federal workers live?

- COG analysis of American Community Survey data illustrates how evenly federal workers are spread throughout the region.

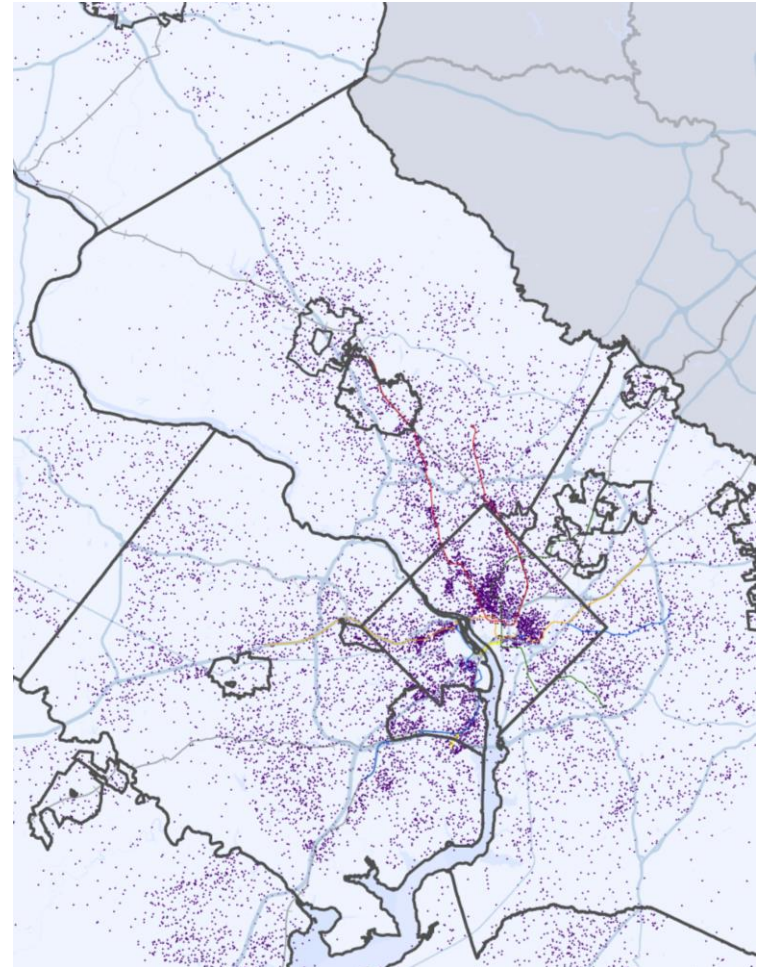


(COG analysis of 2013-2017 ACS Survey)

# Government Shutdown Analysis

Where do federal workers live?

- COG analysis of American Community Survey data illustrates how evenly federal workers are spread throughout the region.



(COG analysis of 2013-2017 ACS Survey)

# Government Shutdown Analysis

## Where do federal workers live?

- COG analysis of American Community Survey data illustrates how evenly federal workers are spread throughout the region.

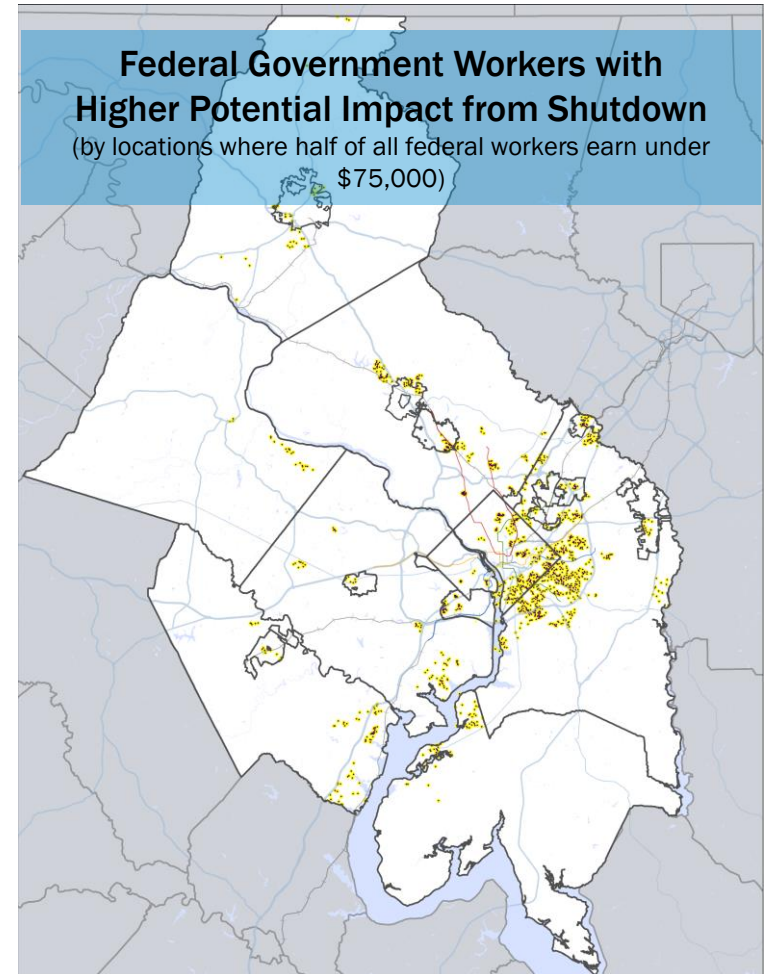
Jurisdiction	% of Regional Federal Workforce
District of Columbia	15.4%
Charles County	3.8%
Frederick County	2.8%
Montgomery County	18.2%
Prince George's County	17.1%
Suburban Maryland	41.9%
Alexandria	4.3%
Arlington County	6.4%
Fairfax	0.3%
Fairfax County	19.5%
Falls Church	0.4%
Loudoun County	4.1%
Manassas	0.3%
Manassas Park	0.2%
Prince William County	7.2%
Northern Virginia	42.7%
Region	100.0%

(COG analysis of 2013-2017 ACS Survey)

# Government Shutdown Analysis

Where do the federal workers most vulnerable to the shutdown live?

- COG analysis of ACS data identifies census block groups in the region where half of federal workers earn under \$75,000.



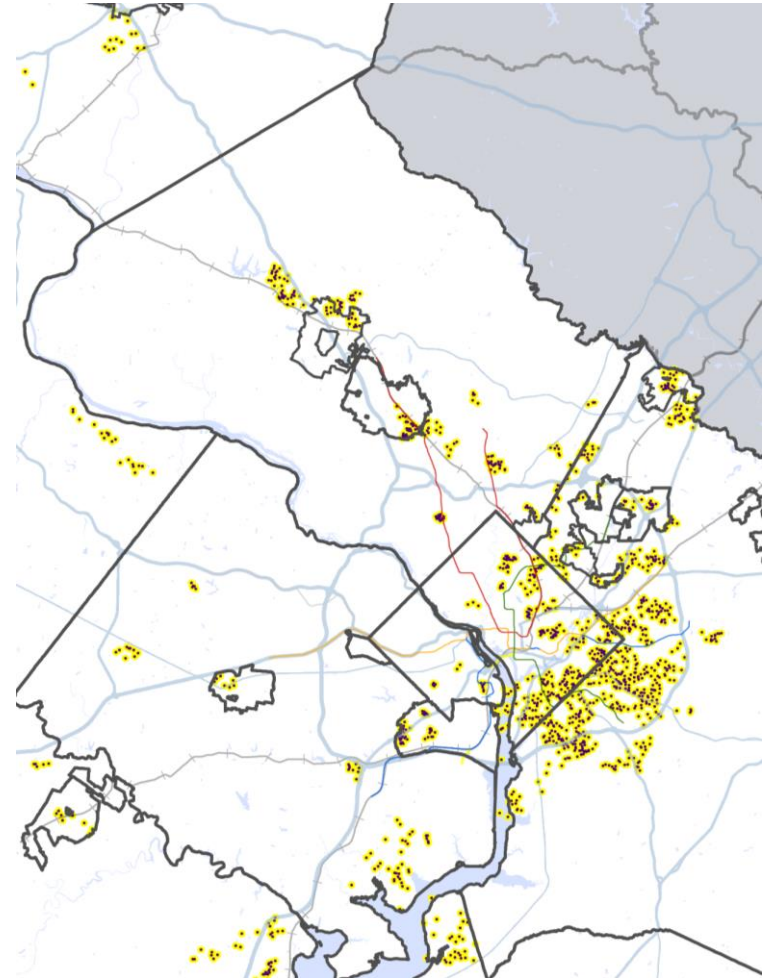
(COG analysis of 2013-2017 ACS Survey)



# Government Shutdown Analysis

Where do the federal workers most vulnerable to the shutdown live?

- COG analysis of ACS data identifies census block groups in the region where half of federal workers earn under \$75,000.



(COG analysis of 2013-2017 ACS Survey)

# Government Shutdown Analysis

Where do the federal workers most vulnerable to the shutdown live?

- COG analysis of ACS data identifies census block groups in the region where half of federal workers earn under \$75,000.

EXAMPLE: DISTRICT OF COLUMBIA		
Block group location*	Fed Workers	Median Fed Worker Earnings
Eckington	197	\$74,625
16th Street Heights	192	\$72,853
Rhode Island Ave Metro	188	\$60,625
H Street	164	\$74,803
Fort Totten	160	\$71,898
St. Elizabeths	147	\$55,739
Grant Park	140	\$54,625
Bellevue	135	\$65,833
Naylor Gardens	130	\$71,310
16th Street Heights	127	\$72,853

(COG analysis of 2013-2017 ACS Survey)

\*Block groups are a statistical unit. Some communities are comprised of multiple block groups.



# Government Shutdown Analysis

Where do the federal workers most vulnerable to the shutdown live?

- COG analysis of ACS data identifies census block groups in the region where half of federal workers earn under \$75,000.

## EXAMPLE: PRINCE GEORGE'S COUNTY

Block group location*	Fed Workers	Median Fed Worker Earnings
Capitol Heights	418	\$73,857
Camp Springs	385	\$48,661
Laurel	356	\$64,000
Glassmanor	282	\$59,761
Oxon Hill	279	\$71,250
District Heights	272	\$64,972
Fort Washington	259	\$61,429
District Heights	256	\$58,007
Greenbelt	244	\$72,530
Temple Hills	224	\$51,875

(COG analysis of 2013-2017 ACS Survey)

\*Block groups are a statistical unit. Some communities are comprised of multiple block groups.

# Government Shutdown Analysis

Where do the federal workers most vulnerable to the shutdown live?

- COG analysis of ACS data identifies census block groups in the region where half of federal workers earn under \$75,000.

EXAMPLE: ALEXANDRIA		
Block group location*	Fed Workers	Median Fed Worker Earnings
Beauregard	335	\$66,676
Landmark-Van Dorn	293	\$70,455
Alexandria West	206	\$63,750
Seminary Hill	170	\$71,345
Landmark-Van Dorn	148	\$70,455
Alexandria West	115	\$63,750
Alexandria West	94	\$63,750
Shirley Duke	61	\$71,345
Dalecrest	57	\$71,345
Beauregard	55	\$66,676

(COG analysis of 2013-2017 ACS Survey)

\*Block groups are a statistical unit. Some communities are comprised of multiple block groups.

# Regional Response

---

- Local government actions (public outreach, easing of requirements for assistance)
- COG Board letter on shutdown
- Participation in call of area philanthropies led by the Community Foundation
- Outreach to utilities
- Coordination of meeting next week at COG co-sponsored with United Way

## Chuck Bean

COG Executive Director  
cbean@mwkog.org

[mwkog.org](http://mwkog.org)

---

777 North Capitol Street NE, Suite 300  
Washington, DC 20002



Metropolitan Washington  
Council of Governments