

Washington-Baltimore Regional Airports
Monthly Enplanement Statistics
(January - December)
2008, 2009, 2010

Table 1 shows twelve month (January through December) enplanement statistics for the three regional airports for the last three years. These data are graphed in Figure 1 through Figure 4. Table 2 shows the monthly enplanement percent change for the same time period for all three airports. Annual enplanements by destination are presented in Table 3 and percent changes in Table 4. Table 5 and Table 6 show monthly enplanements for domestic and international destinations and percent change by airport, respectively.

Some of the major findings include:

- Annual enplanements grew by 2.4 percent in 2010 when compared with the same time period of 2008, and by 3.4 percent between 2009 and 2010.
- Baltimore/Washington Thurgood Marshall International Airport (BWI) recorded the highest growth of enplanements between 2009 and 2010 with almost 4.8 percent, which accounted for 48 percent of the regional growth.
- The sharp decline in enplanements at all three airports during February 2010 can be attributed to the three major snow events during the month and subsequent reduced flight operations and passenger volumes in the Mid-Atlantic and Northeast.
- When compared with 2008, annual enplanements for 2009 show a 0.9 percent decline regionally. However, BWI showed an increase of 2.4 percent for the same time period, with September and November showing a steep increase (more than 10 percent).
- At BWI, while total enplanements increased by 4.8 percent between 2009 and 2010, international enplanements increased by 18 percent and domestic by 4 percent. However, domestic destination enplanements accounted for almost 92 percent of the total increase.
- At Washington Dulles International Airport (IAD), while enplanements increased by 2.3 percent between 2009 and 2010, domestic enplanements accounted for 77 percent of the increase and international enplanements 23 percent.
- At Ronald Reagan Washington National Airport (DCA), enplanements increased by 3.1 percent between 2009 and 2010; 96 percent of the increase was domestic and 4 percent international (transborder, i.e., flights between the United States and Canada, plus flights to the Bahamas and Bermuda [seasonal]).
- While enplanements declined at all airports during February 2010, international destination enplanement increased by 23 percent at BWI. Other than July, international enplanements in 2010 at BWI gained a double digit increase while at DCA, this increase occurred from March through July, and September (see Table 5 and Table 6).

Table 1: Washington-Baltimore Regional Airports Monthly Enplanement Statistics (January - December)

Month	2008				2009				2010			
	BWI	DCA	IAD	Total	BWI	DCA	IAD	Total	BWI	DCA	IAD	Total
January	747,491	612,998	879,576	2,240,065	704,813	594,310	845,100	2,144,223	749,143	592,162	855,103	2,196,408
February	742,027	628,842	828,853	2,199,722	667,801	613,149	755,736	2,036,686	585,944	508,869	671,646	1,766,459
March	912,693	786,569	1,037,843	2,737,105	843,997	721,584	936,803	2,502,384	923,729	798,048	988,834	2,710,611
April	864,692	795,701	996,279	2,656,672	899,301	785,036	973,673	2,658,010	908,210	783,009	955,542	2,646,761
May	954,284	831,175	1,094,511	2,879,970	921,262	787,633	1,005,711	2,714,606	972,415	807,074	1,040,798	2,820,287
June	966,719	823,282	1,116,406	2,906,407	965,034	798,330	1,075,911	2,839,275	1,051,172	810,418	1,100,292	2,961,882
July	972,679	833,309	1,130,844	2,936,832	1,046,405	824,851	1,123,441	2,994,697	1,096,220	819,122	1,144,528	3,059,870
August	940,055	794,245	1,090,467	2,824,767	993,087	779,403	1,087,120	2,859,610	1,045,090	812,638	1,117,239	2,974,967
September	750,235	679,247	887,496	2,316,978	841,387	688,559	929,087	2,459,033	873,375	736,424	973,264	2,583,063
October	865,652	791,714	974,654	2,632,020	938,039	795,181	982,873	2,716,093	1,000,785	838,988	1,051,658	2,891,431
November	751,151	686,491	866,669	2,304,311	852,444	707,088	899,942	2,459,474	909,808	779,585	946,150	2,635,543
December	784,182	714,258	953,593	2,452,033	823,295	672,119	931,374	2,426,788	880,822	749,207	967,851	2,597,880
Total	10,251,860	8,977,831	11,857,191	31,086,882	10,496,865	8,767,243	11,546,771	30,810,879	10,996,713	9,035,544	11,812,905	31,845,162

Table 2: Washington-Baltimore Regional Airports Percent Change Monthly Enplanement Statistics (January - December)

Month	2008 / 2009				2009 / 2010				2008 / 2010			
	BWI	DCA	IAD	Total	BWI	DCA	IAD	Total	BWI	DCA	IAD	Total
January	-5.7%	-3.0%	-3.9%	-4.3%	6.3%	-0.4%	1.2%	2.4%	0.2%	-3.4%	-2.8%	-1.9%
February	-10.0%	-2.5%	-8.8%	-7.4%	-12.3%	-17.0%	-11.1%	-13.3%	-21.0%	-19.1%	-19.0%	-19.7%
March	-7.5%	-8.3%	-9.7%	-8.6%	9.4%	10.6%	5.6%	8.3%	1.2%	1.5%	-4.7%	-1.0%
April	4.0%	-1.3%	-2.3%	0.1%	1.0%	-0.3%	-1.9%	-0.4%	5.0%	-1.6%	-4.1%	-0.4%
May	-3.5%	-5.2%	-8.1%	-5.7%	5.6%	2.5%	3.5%	3.9%	1.9%	-2.9%	-4.9%	-2.1%
June	-0.2%	-3.0%	-3.6%	-2.3%	8.9%	1.5%	2.3%	4.3%	8.7%	-1.6%	-1.4%	1.9%
July	7.6%	-1.0%	-0.7%	2.0%	4.8%	-0.7%	1.9%	2.2%	12.7%	-1.7%	1.2%	4.2%
August	5.6%	-1.9%	-0.3%	1.2%	5.2%	4.3%	2.8%	4.0%	11.2%	2.3%	2.5%	5.3%
September	12.1%	1.4%	4.7%	6.1%	3.8%	7.0%	4.8%	5.0%	16.4%	8.4%	9.7%	11.5%
October	8.4%	0.4%	0.8%	3.2%	6.7%	5.5%	7.0%	6.5%	15.6%	6.0%	7.9%	9.9%
November	13.5%	3.0%	3.8%	6.7%	6.7%	10.3%	5.1%	7.2%	21.1%	13.6%	9.2%	14.4%
December	5.0%	-5.9%	-2.3%	-1.0%	7.0%	11.5%	3.9%	7.1%	12.3%	4.9%	1.5%	5.9%
Total	2.4%	-2.3%	-2.6%	-0.9%	4.8%	3.1%	2.3%	3.4%	7.3%	0.6%	-0.4%	2.4%

Figure 1: Washington-Baltimore Regional Airports, Monthly Enplanement Statistics

*Washington-Baltimore Regional Airports
Monthly Enplanement Statistics*

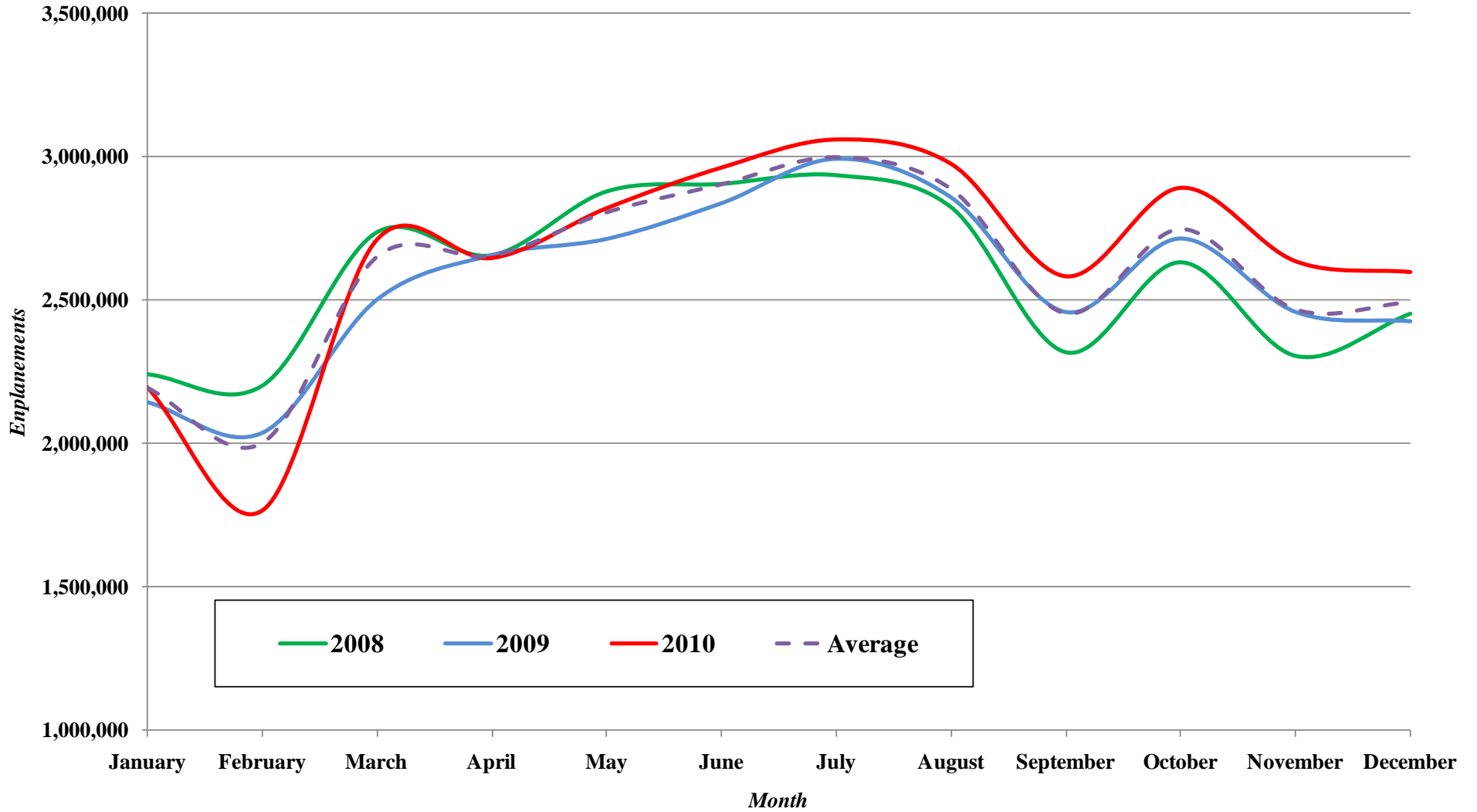


Figure 2: BWI Monthly Enplanement Statistics

*BWI Marshall International Airport
Monthly Enplanement Statistics*

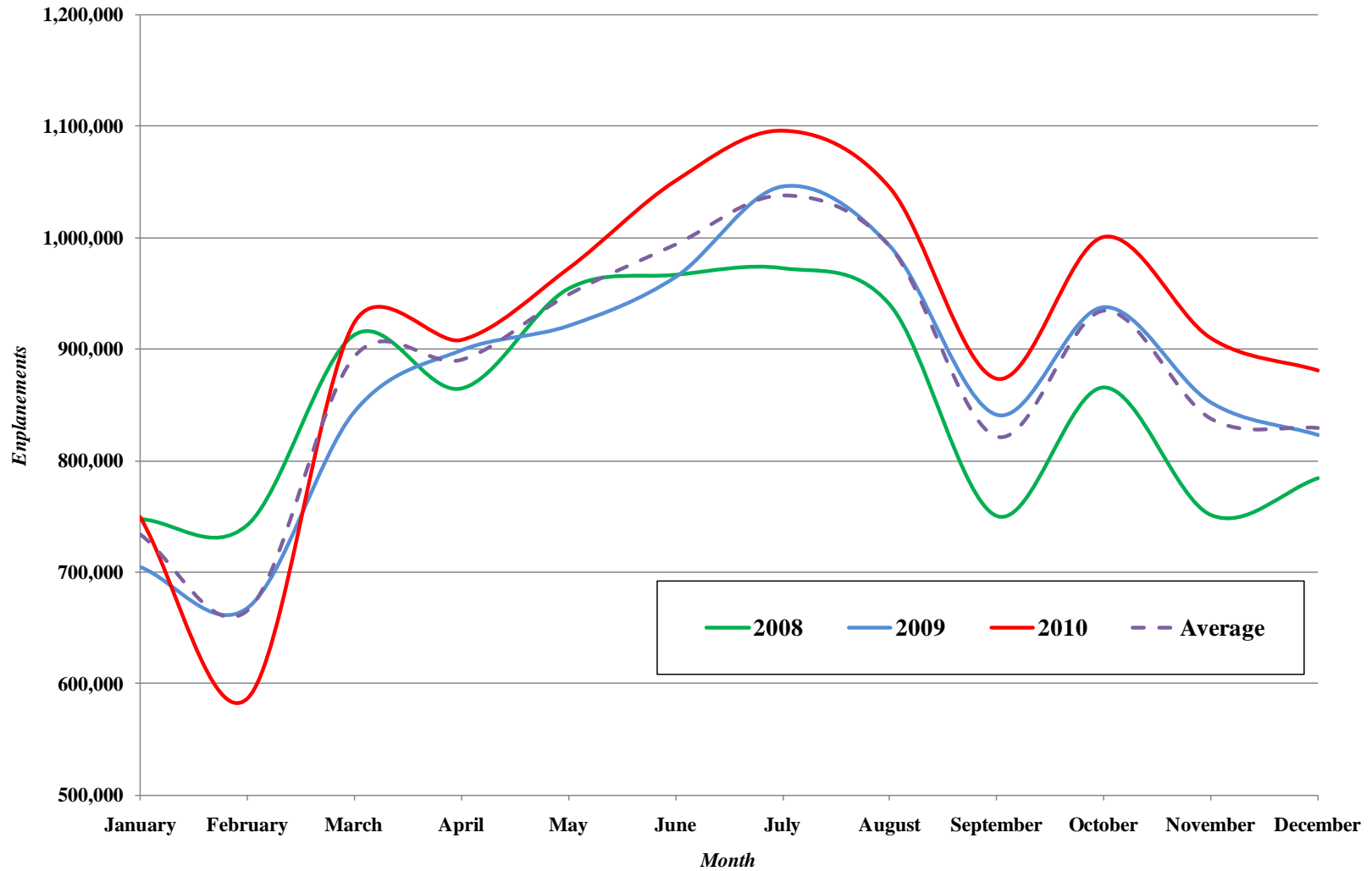


Figure 3: IAD Monthly Enplanement Statistics

*Dulles International Airport
Monthly Enplanement Statistics*

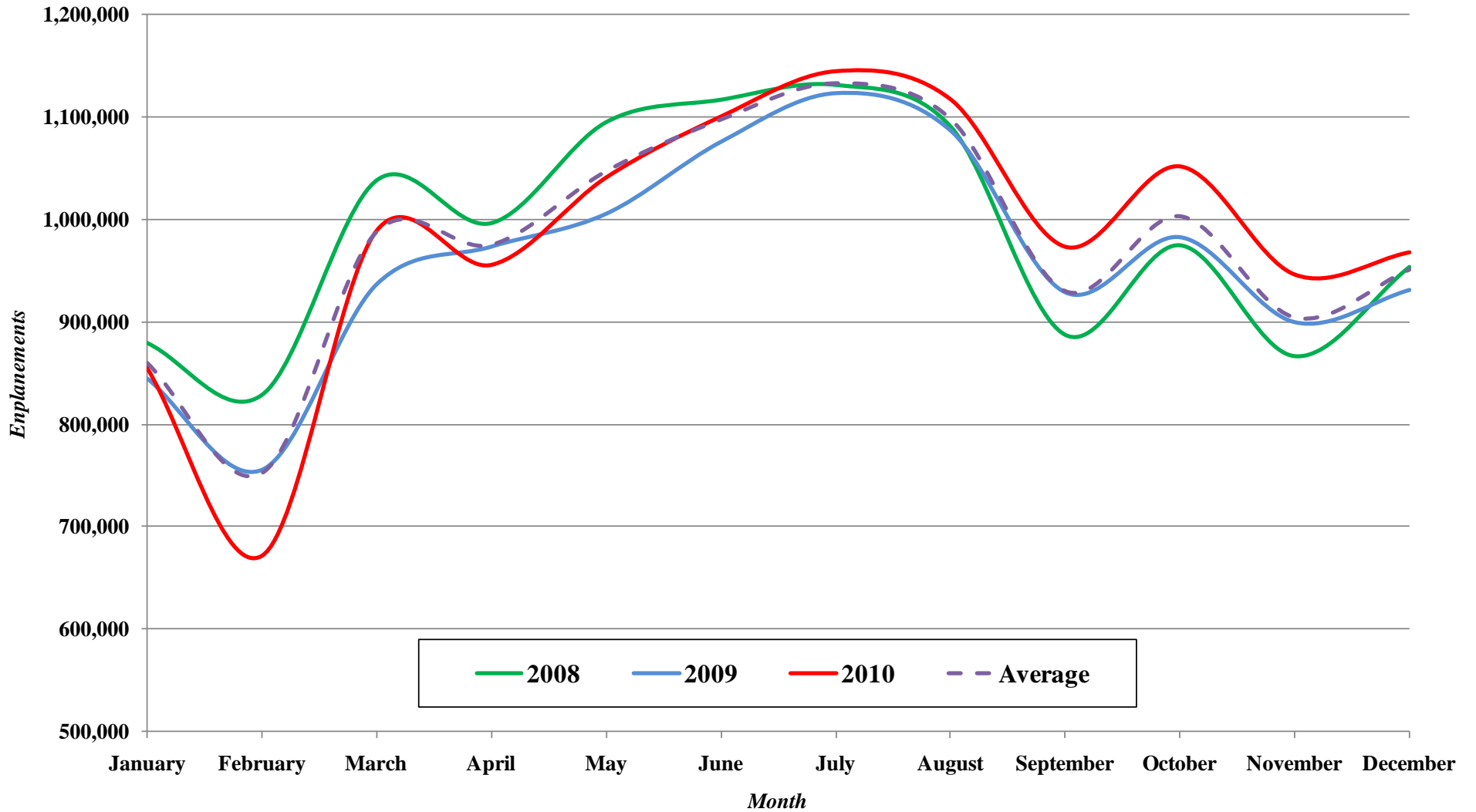


Figure 4: DCA Monthly Enplanement Statistics

*Reagan National Airport
Monthly Enplanement Statistics*

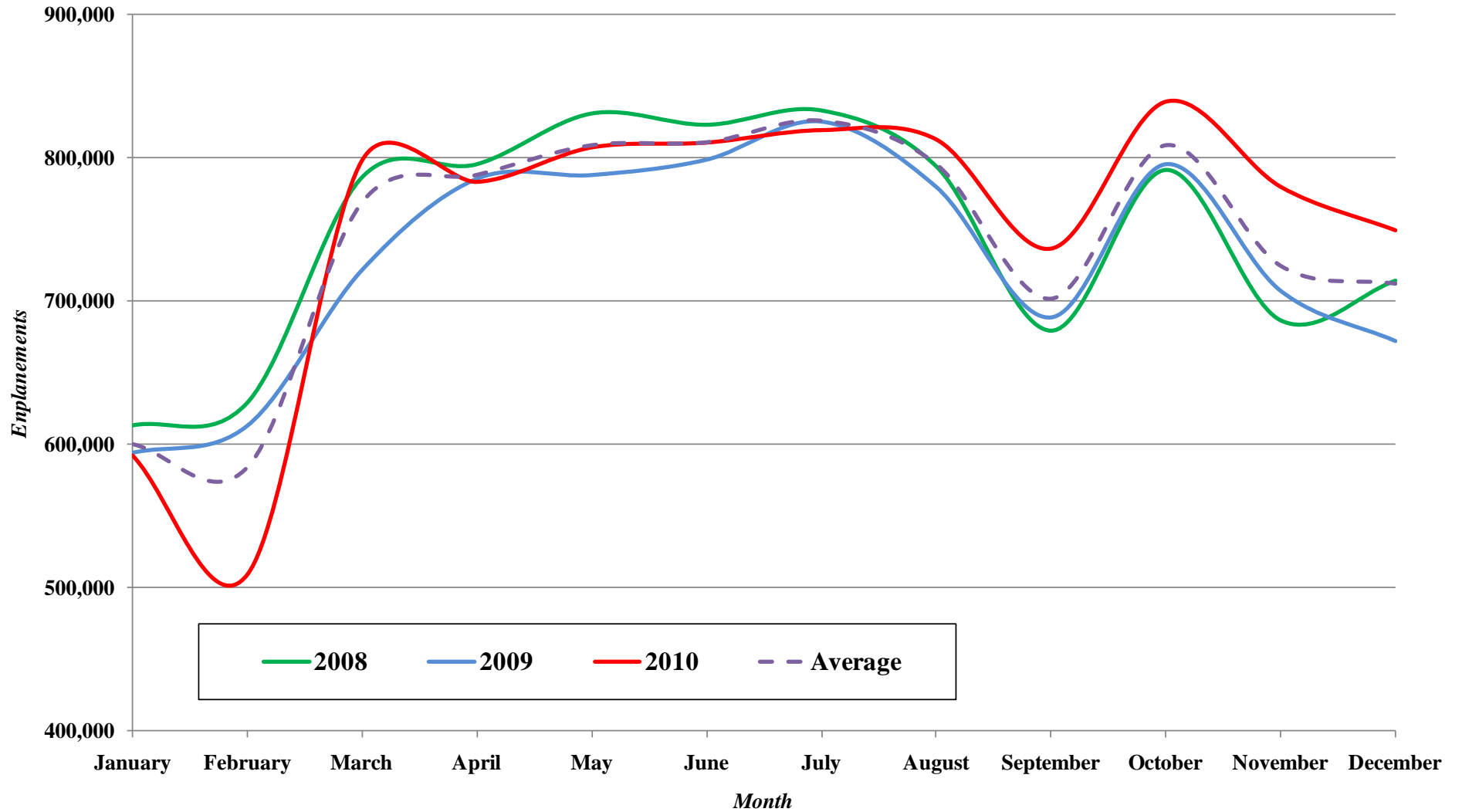


Table 3: Washington-Baltimore Regional Airports Annual Enplanement Statistics by Destination (January - December)

	BWI			DCA			IAD		
	Domestic	International	Total	Domestic	International	Total	Domestic	International	Total
2008	10,016,768	235,092	10,251,860	8,836,467	141,364	8,977,831	8,742,530	3,114,661	11,857,191
2009	10,288,001	208,864	10,496,865	8,634,011	133,232	8,767,243	8,429,500	3,117,271	11,546,771
2010	10,750,031	246,682	10,996,713	8,891,203	144,340	9,035,543	8,635,670	3,177,235	11,812,905

Table 4: Washington-Baltimore Regional Airports Percent Change Annual Enplanement Statistics by Destination (January - December)

	BWI			DCA			IAD		
	Domestic	International	Total	Domestic	International	Total	Domestic	International	Total
2008 / 2009	2.7%	-11.2%	2.4%	-2.3%	-5.8%	-2.3%	-3.6%	0.1%	-2.6%
2009 / 2010	4.5%	18.1%	4.8%	3.0%	8.3%	3.1%	2.4%	1.9%	2.3%
2008 / 2010	7.3%	4.9%	7.3%	0.6%	2.1%	0.6%	-1.2%	2.0%	-0.4%

Table 5: Washington-Baltimore Regional Airports Monthly Enplanement Statistics by Destination (January - December)

	2009						2010					
	BWI		DCA		IAD		BWI		DCA		IAD	
	Domestic	Int'l	Domestic	Int'l	Domestic	Int'l	Domestic	Int'l	Domestic	Int'l	Domestic	Int'l
January	689,001	15,812	585,517	8,793	612,747	232,353	731,639	17,504	583,006	9,156	616,195	238,908
February	655,052	12,749	604,740	8,409	571,709	184,027	570,326	15,618	500,620	8,249	499,786	171,860
March	828,061	15,936	710,802	10,782	698,800	238,003	901,596	22,133	784,878	13,170	739,332	249,502
April	881,443	17,858	774,424	10,612	728,487	245,186	887,333	20,877	770,506	12,503	723,513	232,029
May	903,612	17,650	776,401	11,232	733,343	272,368	950,419	21,996	793,321	13,753	746,228	294,570
June	943,890	21,144	784,738	13,592	767,766	308,145	1,027,260	23,912	794,001	16,417	787,123	313,169
July	1,024,776	21,629	810,731	14,120	815,743	307,698	1,073,043	23,177	802,041	17,081	832,085	312,443
August	973,698	19,389	764,214	15,189	782,234	304,886	1,022,055	23,035	796,472	16,166	815,831	301,408
September	826,197	15,190	679,560	8,999	660,752	268,335	855,224	18,151	726,290	10,134	688,611	284,653
October	921,419	16,620	785,172	10,009	718,787	264,086	979,919	20,866	829,037	9,950	774,870	276,788
November	835,886	16,558	696,290	10,798	668,319	231,623	890,477	19,331	770,833	8,752	708,486	237,664
December	804,966	18,329	661,422	10,697	670,813	260,561	860,740	20,082	740,198	9,009	703,610	264,241
Total	10,288,001	208,864	8,634,011	133,232	8,429,500	3,117,271	10,750,031	246,682	8,891,203	144,340	8,635,670	3,177,235

Table 6: Washington-Baltimore Regional Airports Percent Change Monthly Enplanement by Destination (January - December)

	2008 / 2009						2009 / 2010					
	BWI		DCA		IAD		BWI		DCA		IAD	
	Domestic	Int'l	Domestic	Int'l	Domestic	Int'l	Domestic	Int'l	Domestic	Int'l	Domestic	Int'l
January	-5%	-20%	-3%	-4%	-6%	2%	6%	11%	0%	4%	1%	3%
February	-10%	-23%	-2%	-6%	-8%	-10%	-13%	23%	-17%	-2%	-13%	-7%
March	-7%	-24%	-8%	-15%	-10%	-8%	9%	39%	10%	22%	6%	5%
April	4%	-7%	-1%	-15%	-3%	0%	1%	17%	-1%	18%	-1%	-5%
May	-3%	-14%	-5%	-22%	-9%	-6%	5%	25%	2%	22%	2%	8%
June	0%	-12%	-3%	1%	-5%	0%	9%	13%	1%	21%	3%	2%
July	8%	-14%	-1%	-2%	-2%	4%	5%	7%	-1%	21%	2%	2%
August	6%	-10%	-2%	7%	-3%	7%	5%	19%	4%	6%	4%	-1%
September	13%	-7%	1%	-3%	4%	6%	4%	19%	7%	13%	4%	6%
October	9%	-6%	1%	-12%	0%	3%	6%	26%	6%	-1%	8%	5%
November	14%	4%	3%	3%	6%	-1%	7%	17%	11%	-19%	6%	3%
December	5%	6%	-6%	2%	-3%	0%	7%	10%	12%	-16%	5%	1%
Total	3%	-11%	-2%	-6%	-4%	0%	4%	18%	3%	8%	2%	2%