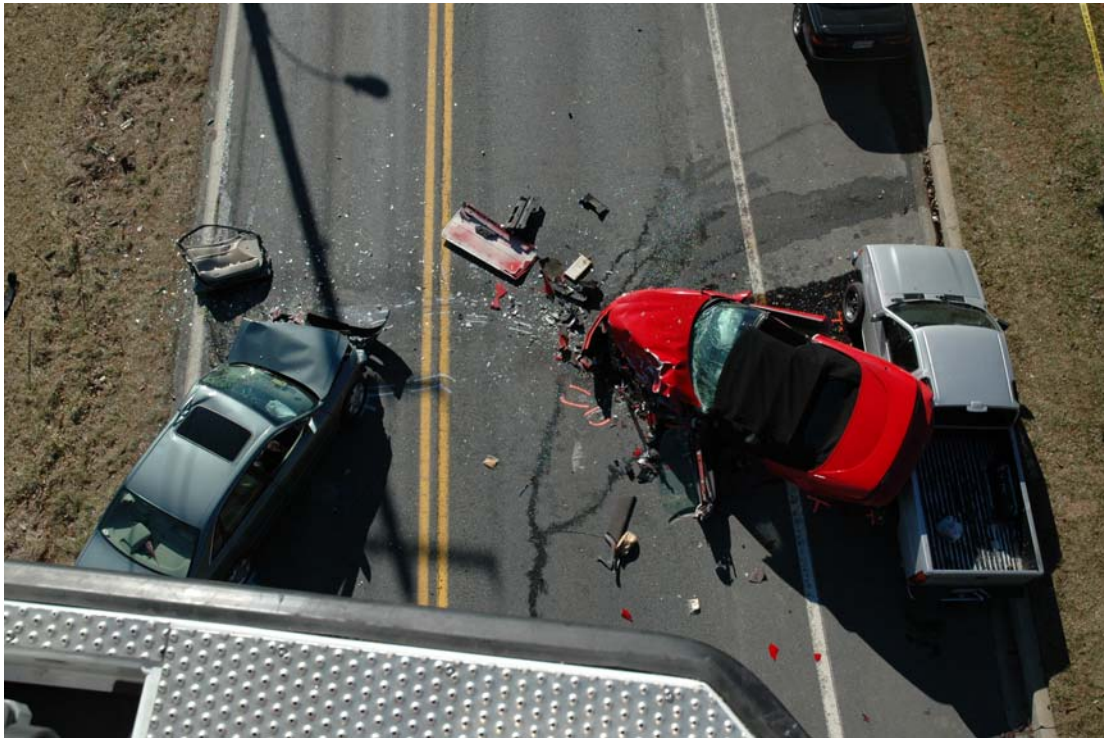




---

# How Safe Are Our Roads?

---

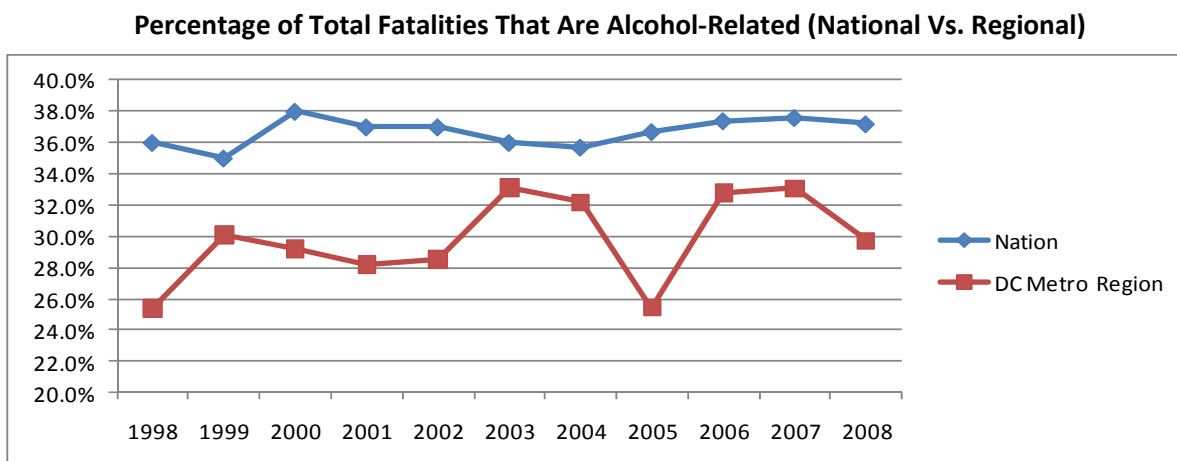
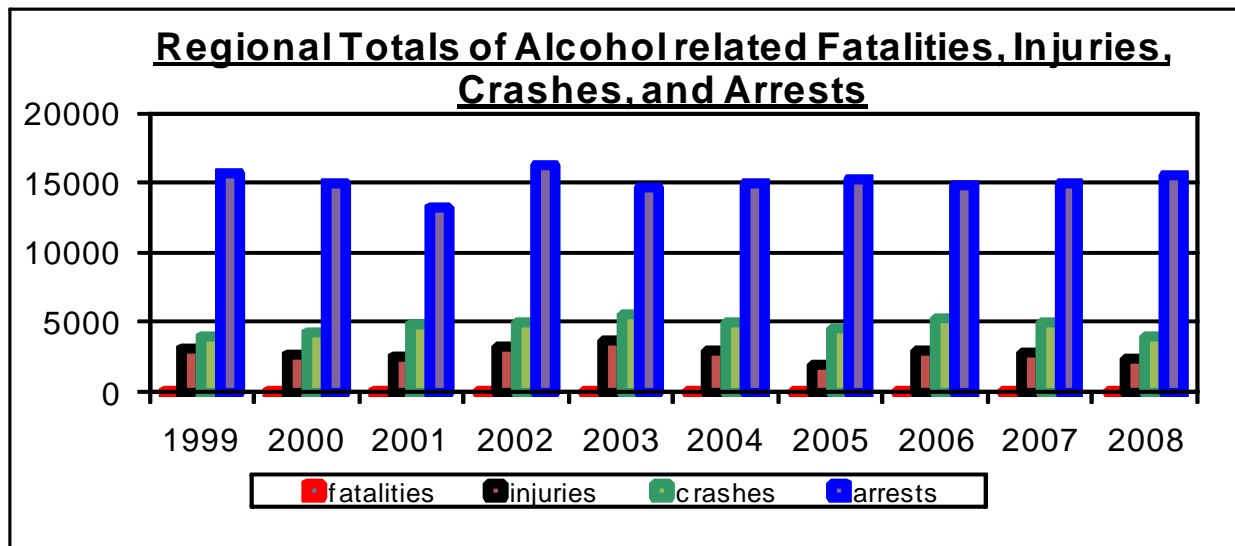


Annual Data Report on the Impact of Drunk Driving on  
Road Safety in the Washington D.C. Metropolitan Region  
**December 2009**



Metropolitan Washington  
Council of Governments

## Decreased Drunk Driving in the Metropolitan Washington Region Counters National Trend



\*Source, National Highway Traffic Safety Administration

The Washington Metropolitan area in 2008 has continued its trend in declining numbers of alcohol-related traffic fatalities, injuries and crashes. Meanwhile, the number of local arrests for driving under the influence (DUI) or driving while intoxicated (DWI) increased by 5.0% in 2008. The data upholds research showing the value of both highly-visible law enforcement deterrent efforts like the region's Checkpoint Strikeforce campaign as well as increased public attention to the threat of drunk driving.



WRAP



# How Safe Are Our Roads? - 2008 Overview

Findings in the 2009 report include:

**FATALITIES...**Local alcohol and or drug-related traffic deaths *decreased* by 20.7% between 2007 and 2008. This is a drastic magnification of last year's 2.5% decrease in such deaths in the Greater Washington Area as well as the 9.7% decrease at the National level.

**CRASHES...**Area traffic crashes attributed to alcohol and or drugs *decreased* by more than 21.3% between 2007 and 2008. This continues the previous year's (2007) 5.8% decrease in such crashes in the Greater Washington Area.

**INJURIES...**Local alcohol and or drug-related traffic injuries also *decreased* by 16.8% between 2007 and 2008.

**ARRESTS...**Local arrests for either driving under the influence (DUI) or driving while intoxicated (DWI) *increased* by 5% between 2007 and 2008.

Of the Washington metropolitan area's 310 total traffic fatalities last year, 29.7% (92) of these roadway deaths were alcohol and or drug-related. 2008 national statistics (National Highway Traffic Safety Administration or NHTSA) show that 37% of total U.S. vehicular fatalities were reported as alcohol / drug-related.

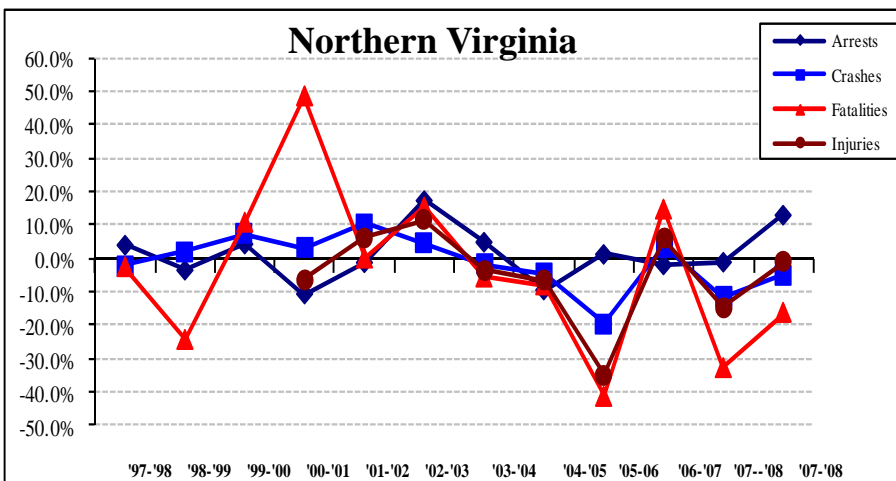
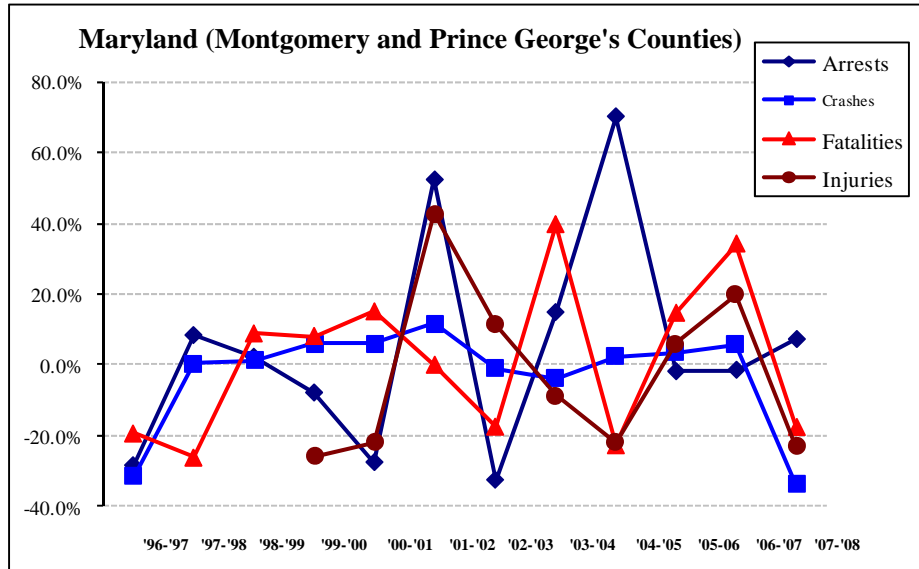
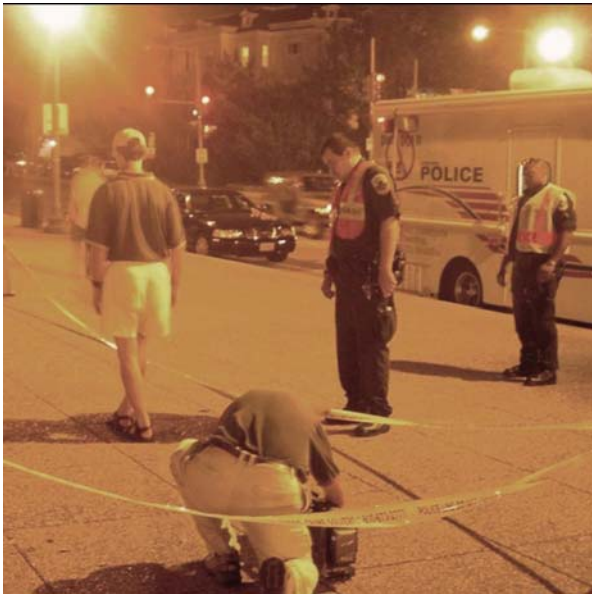
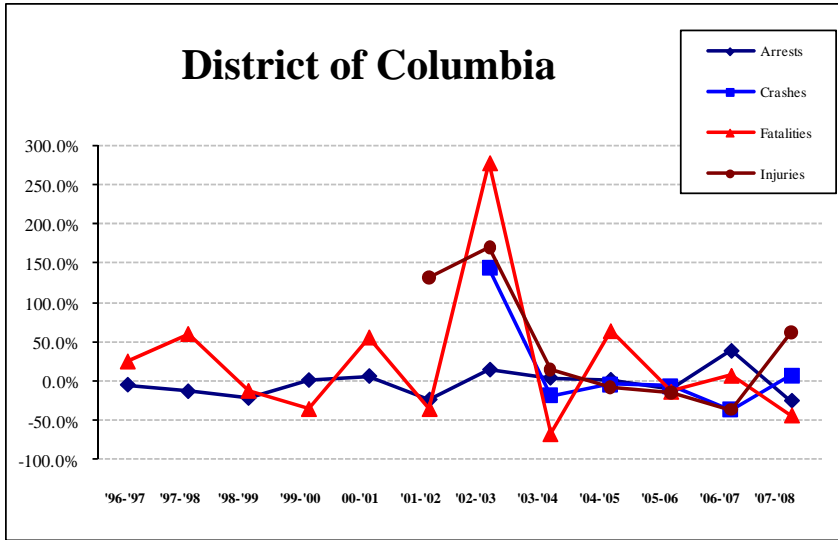
While WRAP and COG are pleased to note the effectiveness of high-profile law enforcement deployments like local sobriety checkpoints and saturation patrols – and the voluntary compliance gained from the same – as a principal catalyst in the Greater Washington Area's recent downward DUI numbers, they also stress the need to resist complacency. Because someone is still arrested for drunk driving every 33-minutes in the Washington metropolitan area, vigilance in combating this completely preventable killer is still needed.

## Background

Data compiled in this report comes from national, state, and local sources including the U.S. Census Bureau, National Highway Traffic Safety Administration (NHTSA), and Virginia and Maryland Departments of Transportation. Primary data was collected from the local police departments of each jurisdiction.

It should be noted that the jurisdictional data in this report does not always include State Police data. The State Police in Maryland and Virginia are charged with enforcing traffic laws on state highways and interstate expressways; inclusion of this data would likely increase the number of incidents in all categories. It is possible that some jurisdictional data may include State Police figures because local police often respond to highway incidents when State Police are unavailable. In some jurisdictions, the data reported were provided by the state, and most likely include state police data.

# Sub Regional Trends



Northern Virginia

## 2008 Fatalities



Alcohol Related Traffic Fatalities by Jurisdiction, 1998-2008

	1998	2005	2006	2007	2008	Percent Change	
						2007-2008	1998-2008
<b>District of Columbia</b>	16	18	15	16	9	-43.8%	-43.8%
Maryland							
<i>State Total</i>	-	235	268	178	152	-14.6%	n/a*
Montgomery County	8	9	17	13	14	7.7%	75.0%
Prince George's County	26	32	30	50	38	-24.0%	46.2%
<b>MD Regional Total</b>	<b>34</b>	<b>41</b>	<b>47</b>	<b>63</b>	<b>52</b>	<b>-17.5%</b>	<b>52.9%</b>
Virginia							
<i>State Total</i>	-	322	374	378	354	-6.3%	n/a*
Arlington County	1	0	1	3	3	0.0%	200.0%
Fairfax County	13	20	24	19	13	-31.6%	0.0%
Loudoun County	7	3	5	0	5	n/a	-28.6%
Prince William County	5	4	22	12	9	-25.0%	80.0%
City of Alexandria	2	0	0	1	1	0.0%	-50.0%
City of Fairfax	0	0	3	1	0	-100.0%	0.0%
City of Falls Church	0	0	0	0	0	n/a	0.0%
City of Manassas	0	0	0	1	0	-100.0%	0.0%
City of Manassas Park	0	0	0	0	0	0.0%	0.0%
<b>Northern Virginia Total</b>	<b>28</b>	<b>27</b>	<b>55</b>	<b>37</b>	<b>31</b>	<b>-16.2%</b>	<b>10.7%</b>
<b>DC Metro Regional Total</b>	<b>78</b>	<b>86</b>	<b>117</b>	<b>116</b>	<b>92</b>	<b>-20.7%</b>	<b>17.9%</b>
<b>National Parks in Region</b>	--	3	2	0	0	0.0%	0.0%
<b>Regional Total Adjusted</b>	<b>78</b>	<b>89</b>	<b>119</b>	<b>116</b>	<b>92</b>	<b>-20.7%</b>	<b>17.9%</b>
<b>National</b>	<b>14,899</b>	<b>15,985</b>	<b>15,970</b>	<b>15,534</b>	<b>13,846</b>	<b>-10.9%</b>	<b>-7.1%</b>

\* 1998 data is not available for comparison

Total Traffic Fatalities by Jurisdiction 1998-2008

	1998	2005	2006	2007	2008	Percent Change	
						2007-2008	1998-2008
<b>District of Columbia</b>	59	49	41	54	40	-25.9%	-32.2%
Maryland							
<i>State Total</i>	-	614	651	614	591	-3.7%	-10.6%
Montgomery County	46	38	57	49	52	6.1%	13.0%
Prince George's County	111	134	111	126	129	2.4%	16.2%
<b>MD Regional Total</b>	<b>157</b>	<b>172</b>	<b>168</b>	<b>175</b>	<b>181</b>	<b>3.4%</b>	<b>15.3%</b>
Virginia							
<i>State Total</i>	-	947	797	1,027	821	-0.8%	-10.2%
Arlington County	3	4	4	6	8	33.3%	166.7%
Fairfax County	45	61	67	48	29	-39.6%	-35.6%
Loudoun County	21	20	19	22	11	-50.0%	-47.6%
Prince William County	19	23	46	27	24	-11.1%	26.3%
City of Alexandria	3	2	1	5	3	-40.0%	0.0%
City of Fairfax	0	2	3	2	0	-100.0%	n/a
City of Falls Church	0	0	0	0	0	0.0%	n/a
City of Manassas	0	3	1	3	1	-66.7%	n/a
City of Manassas Park	0	0	0	0	0	0.0%	n/a
<b>Northern Virginia Total</b>	<b>91</b>	<b>115</b>	<b>141</b>	<b>113</b>	<b>76</b>	<b>-32.7%</b>	<b>-16.5%</b>
<b>DC Metro Regional Total</b>	<b>307</b>	<b>336</b>	<b>350</b>	<b>342</b>	<b>297</b>	<b>-13.2%</b>	<b>-3.3%</b>
<b>National Parks in Region</b>	--	14	13	9	13	44.4%	-35.0%
<b>Regional Total Adjusted</b>	<b>--</b>	<b>350</b>	<b>363</b>	<b>351</b>	<b>310</b>	<b>-11.7%</b>	<b>-10.1%</b>
<b>National</b>	<b>41,501</b>	<b>43,510</b>	<b>42,642</b>	<b>41,259</b>	<b>37,261</b>	<b>-9.7%</b>	<b>-10.2%</b>



## Injuries

### Motor Vehicle Injuries in 2008

	Total Injuries	Alcohol Related Injuries	Percentage of Total Injuries that were Alcohol Related	Percent Change Alcohol Related Injuries, 2007-2008
<b>District of Columbia</b>	<b>6,876</b>	<b>96</b>	<b>1.4%</b>	<b>-63.6%</b>
Maryland				
Montgomery County	6,624	405	6.1%	-16.3%
Prince George's County	7,099	572	8.1%	-27.3%
<b>MD Regional Total</b>	<b>13,723</b>	<b>977</b>	<b>7.1%</b>	<b>-23.1%</b>
Virginia				
Arlington County	1,288	146	11.3%	15.0%
Fairfax County	7,964	573	7.2%	-11.6%
Loudoun County	1,717	140	8.2%	418.5%
Prince William County	2,717	263	9.7%	-8.7%
City of Alexandria	1,492	89	6.0%	-22.6%
City of Fairfax	201	8	4.0%	-63.6%
City of Falls Church	141	2	1.4%	n/a
City of Manassas	270	15	5.6%	-6.3%
City of Manassas Park	20	1	5.0%	-83.3%
<b>Northern Virginia Total</b>	<b>18,810</b>	<b>1,237</b>	<b>7.8%</b>	<b>-1.0%</b>
<b>DC Metro Regional Total</b>	<b>36,409</b>	<b>2,310</b>	<b>6.3%</b>	<b>-17.0%</b>
<b>National Parks in Region</b>	<b>669</b>	<b>42</b>	<b>6.3%</b>	<b>-2.3%</b>
<b>Regional Total Adjusted</b>	<b>37,078</b>	<b>2,352</b>	<b>6.3%</b>	<b>-16.8%</b>



The Checkpoint Strikeforce Campaign stopped over 400,000 drivers last year at sobriety checkpoints and saturation patrols in the multi-state area of Delaware, The District of Columbia, Kentucky, Maryland, North Carolina, Virginia and West Virginia.

### Total Traffic Injuries by Jurisdiction, 1998-2008

	1998	2005	2006	2007	2008	Percent Change	
						2007-2008	1998-2008
<b>District of Columbia</b>	-	5,007	4,265	4,070	6,876	61.2%	-53.9%
Maryland							
Montgomery County	8,740	6,870	6,759	6,905	6,624	-4.1%	-18.7%
Prince George's County	11,113	5,792	5,595	7,771	7,099	-8.6%	-28.2%
<b>MD Regional Total</b>	<b>19,853</b>	<b>12,662</b>	<b>12,354</b>	<b>14,676</b>	<b>13,723</b>	<b>-6.5%</b>	<b>-23.9%</b>
Virginia							
Arlington County	1,929	1,220	1,374	1,201	1,288	7.2%	-34.1%
Fairfax County	8,333	6,582	8,537	8,019	7,964	-0.7%	-6.6%
Loudoun County	1,102	1,206	1,711	631	1,717	172.1%	52.1%
Prince William County	2,922	2,586	3,341	2,624	2,717	3.5%	-4.3%
City of Alexandria	1,323	853	1,317	1,403	1,492	6.3%	8.1%
City of Fairfax	389	205	315	241	201	-16.6%	-45.4%
City of Falls Church	128	180	240	40	141	252.5%	25.9%
City of Manassas	350	403	448	288	270	-6.3%	-26.0%
City of Manassas Park	41	23	43	18	20	11.1%	0.0%
<b>Northern Virginia Total</b>	<b>16,517</b>	<b>13,258</b>	<b>17,326</b>	<b>14,465</b>	<b>15,810</b>	<b>9.3%</b>	<b>-12.4%</b>
<b>DC Metro Regional Total</b>	<b>36,370*</b>	<b>30,927</b>	<b>33,945</b>	<b>33,211</b>	<b>36,409</b>	<b>9.6%</b>	<b>4.9%</b>
<b>National Parks in Region</b>	--	703	736	675	669	0.9%	-17.9
<b>Regional Total Adjusted</b>	--	<b>31,630</b>	<b>34,681</b>	<b>33,886</b>	<b>37,078</b>	<b>9.4%</b>	<b>1.1%</b>

## Crashes

### Total Traffic Crashes by Jurisdiction, 1998-2008

	1998	2004	2005	2006	2007	2008	Percent Change	
							2007-2008	1998-2008#^
<b>District of Columbia</b>	--	18,490	17,717	16,478	15,100	16,147	6.9%	-11.6%
Maryland								
Montgomery County	12,811	13,053	12,235	12,076	12,460	11,980	-3.9%	-6.5%
Prince George's County	14,430	15,901	16,349	15,863	15,060	14,266	-5.3%	-1.1%
<b>MD Regional Total</b>	<b>27,241</b>	<b>28,954</b>	<b>28,584</b>	<b>27,939</b>	<b>27,520</b>	<b>26,246</b>	<b>-4.6%</b>	<b>-3.7%</b>
Virginia								
Arlington County	3,324	3,584	3,383	2,984	2,649	2,596	-2.0%	-21.9%
Fairfax County	16,476	18,728	18,363	18,254	17,152	16,318	-4.9%	-1.0%
Loudoun County	2,168	3,824	5,718	4,234	5,720	3,828	-33.1%	76.6%
Prince William County	4,595	5,492	5,648	7,132	5,852	5,520	-5.7%	20.1%
City of Alexandria	2,397	2,274	2,193	2,019	1,947	1,868	-4.1%	-22.1%
City of Fairfax	756	1,124	1,137	926	817	616	-24.6%	-18.5%
City of Falls Church	265	283	196	240	243	177	-27.2%	-33.2%
City of Manassas	733	923	948	931	725	622	-14.2%	-15.1%
City of Manassas Park	88	114	136	111	73	65	-11.0%	-26.1%
<b>Northern Virginia Total</b>	<b>30,802</b>	<b>36,346</b>	<b>37,722</b>	<b>36,831</b>	<b>35,178</b>	<b>31,610</b>	<b>-10.1%</b>	<b>2.6%</b>
	<b>58,043</b>							
<b>DC Metro Regional Total *</b>	<b>--</b>	<b>83,790</b>	<b>84,023</b>	<b>81,248</b>	<b>77,798</b>	<b>74,003</b>	<b>-4.9%</b>	<b>27.5%</b>
<b>National Parks in Region</b>	<b>--</b>	<b>3,186</b>	<b>2,896</b>	<b>2,945</b>	<b>2,669</b>	<b>2,568</b>	<b>-3.8%</b>	<b>-9.5%</b>
<b>Regional Total Adjusted</b>	<b>12,811</b>	<b>86,976</b>	<b>86,919</b>	<b>84,193</b>	<b>80,467</b>	<b>76,571</b>	<b>-4.8%</b>	<b>14.8%</b>



Public outreach to schools can have a large impact in reducing the amount of crashes that occur on the nation's roadways each year.

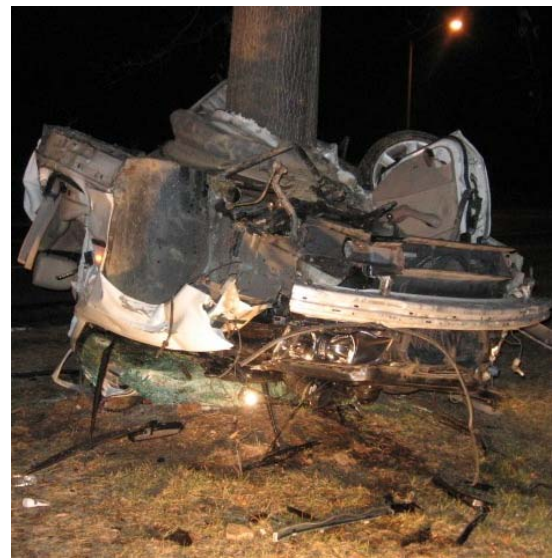
\*Regional totals do not include jurisdictions with missing data.

#District of Columbia Percent Change 2001-2008

^National Parks and Regional Totals Adjusted Percent Change 2000-2008

### Percentage of all Traffic Crashes that were Alcohol Related, 1996-2007

	1998	2004	2005	2006	2007	2008
<b>District of Columbia</b>	-	3.8%	1.3%	2.5%	1.7%	0.8%
Maryland						
Montgomery County	6.0%	7.7%	8.0%	7.8%	8.0%	5.8%
Prince George's County	7.0%	7.7%	7.5%	8.4%	9.3%	6.3%
<b>MD Regional Total</b>	<b>6.5%</b>	<b>7.7%</b>	<b>7.7%</b>	<b>8.2%</b>	<b>8.7%</b>	<b>6.1%</b>
Virginia						
Arlington County	8.2%	9.0%	6.6%	9.7%	10.6%	9.6%
Fairfax County	5.9%	6.6%	5.1%	6.6%	6.1%	6.3%
Loudoun County	7.2%	6.4%	3.2%	6.0%	3.4%	6.5%
Prince William County	7.7%	8.4%	6.5%	7.2%	8.3%	7.4%
City of Alexandria	5.8%	5.5%	5.1%	5.7%	6.1%	5.6%
City of Fairfax	6.6%	5.2%	3.1%	3.8%	5.9%	4.2%
City of Falls Church	6.8%	6.7%	0.5%	4.6%	1.6%	4.0%
City of Manassas	6.0%	5.5%	9.4%	7.6%	5.7%	7.6%
City of Manassas Park	17.0%	10.5%	9.6%	19.8%	20.5%	9.2%
<b>Northern Virginia Total</b>	<b>6.6%</b>	<b>7.0%</b>	<b>5.2%</b>	<b>6.9%</b>	<b>6.4%</b>	<b>6.7%</b>
<b>DC Metro Regional Total</b>	<b>6.5%</b>	<b>6.5%</b>	<b>5.2%</b>	<b>6.4%</b>	<b>6.3%</b>	<b>5.2%</b>
<b>National Parks in Region</b>	<b>--</b>	<b>3.5%</b>	<b>3.4%</b>	<b>3.4%</b>	<b>4.1%</b>	<b>3.7%</b>
<b>Regional Total Adjusted</b>	<b>--</b>	<b>5.7%</b>	<b>5.2%</b>	<b>6.3%</b>	<b>6.2%</b>	<b>5.2%</b>



## Arrests



An impaired driver is arrested every 33 minutes in the Washington Metropolitan Area.

	1998	2005	2006	2007	2008	Percent Change	
						2007-2008	1998-2008
<b>District of Columbia</b>	<b>2,350</b>	<b>1,807</b>	<b>1,600</b>	<b>2,224</b>	<b>1,655</b>	<b>-25.6%</b>	<b>-29.6%</b>
Maryland							
Montgomery County	4,445	3,559	3,714	3,487	3,854	10.5%	-13.3%
Prince George's County	2,321	1,927	1,667	1,814	1,831	0.9%	-21.1%
<b>MD Regional Total</b>	<b>6,766</b>	<b>5,486</b>	<b>5,381</b>	<b>5,301</b>	<b>5,685</b>	<b>7.2%</b>	<b>-16.0%</b>
Virginia							
Arlington County	1,037	574	688	647	677	4.6%	-34.7%
Fairfax County	2,754	3,015	2,769	2,604	3,148	21.7%	14.3%
Loudoun County	220	694	616	690	818	18.6%	271.8%
Prince William County	1,635	1,611	1,794	1,935	2,199	13.6%	34.5%
Alexandria City	394	425	479	567	515	-9.2%	30.7
Fairfax City	325	268	167	184	181	-1.6%	-44.3%
Falls Church City	53	34	54	48	67	39.6%	26.4%
Manassas City	209	219	218	160	110	-31.3%	-47.4%
Manassas Park City	46	110	106	0	60	n/a	30.4%
<b>Northern Virginia Total</b>	<b>6,673</b>	<b>6,950</b>	<b>6,891</b>	<b>6,817</b>	<b>7,715</b>	<b>14.1%</b>	<b>16.5%</b>
<b>DC Metro Regional Total</b>	<b>15,789</b>	<b>14,243</b>	<b>13,872</b>	<b>14,342</b>	<b>15,115</b>	<b>5.4%</b>	<b>-4.3%</b>
<b>National Parks in Region</b>	<b>--</b>	<b>989</b>	<b>974</b>	<b>634</b>	<b>614</b>	<b>-3.2%</b>	<b>36.1%</b>
<b>Regional Total Adjusted</b>	<b>15,789</b>	<b>15,232</b>	<b>14,846</b>	<b>14,976</b>	<b>15,729</b>	<b>5.0%</b>	<b>-0.4%</b>

\*Regional totals do not include jurisdictions with missing or pending data.  
Source: Jurisdictional contacts, see specific contact in Methodology

### Total Alcohol Related Driving Arrests of Juveniles and Adults by Jurisdiction, 1999-2008

	1999			2005			2006			2007			2008		
	≤ 18	>18	Total	≤ 18	>18	Total	≤ 18	>18	Total	≤ 18	>18	Total	≤ 18	> 18 years	Total
<b>District of Columbia</b>			<b>1,807</b>			<b>1,807</b>	<b>--</b>	<b>--</b>	<b>1,600</b>	<b>4</b>	<b>2,220</b>	<b>2,224</b>	<b>6</b>	<b>1,647</b>	<b>1,655</b>
Maryland															
Montgomery County*	285	3,274	3,274	285	3,274	3,559	125	3,589	3,714	48	3,439	3,487	28	3,826	3,854
Prince George's County#	3	1,924	1,924	3	1,924	1,927	4	1,663	1,667	5	1,809	1,814	2	1,829	1,831
<b>MD Regional Total</b>	<b>288</b>	<b>5,198</b>	<b>5,198</b>	<b>288</b>	<b>5,198</b>	<b>5,486</b>	<b>129</b>	<b>5,252</b>	<b>5,381</b>	<b>53</b>	<b>5,248</b>	<b>5,301</b>	<b>30</b>	<b>5,655</b>	<b>5,685</b>
Virginia															
Arlington County	5	0	574	0	574	574	3	685	688	7	640	647			677
Fairfax County	58	28	2,987	28	2,987	3,015	25	2,761	2,786	22	2,564	2,586	25	3,123	3,148
Loudoun County	2	23	671	23	671	694	70	546	616	12	678	690	12	806	818
Prince William County*	19	12	1,599	12	1,599	1,611	27	1,767	1,794	17	1,918	1,935			2,199
Alexandria City	2	0	425	0	425	425	1	478	479	3	564	567	5	510	515
Fairfax City	2	3	265	3	265	268	1	166	167	3	181	184	0	181	181
Falls Church City	0	0	34	0	34	34	2	52	54			48			67
Manassas City	2	2	217	2	217	219	1	217	218	0	160	160	1	109	110
Manassas Park City	1	0	110	0	110	110	1	105	106			0	6	54	60
<b>Northern Virginia Total</b>	<b>91</b>	<b>68</b>	<b>6,882</b>	<b>68</b>	<b>6,882</b>	<b>6,950</b>	<b>131</b>	<b>6,777</b>	<b>6,908</b>	<b>64</b>	<b>6,705</b>	<b>6,817</b>	<b>49</b>	<b>4,783</b>	<b>7,775</b>
<b>DC Metro Regional Total<sup>^</sup></b>	<b>462</b>	<b>14,523</b>	<b>14,523</b>	<b>462</b>	<b>14,523</b>	<b>14,243</b>	<b>260</b>	<b>12,029</b>	<b>13,889</b>	<b>121</b>	<b>14,173</b>	<b>14,342</b>	<b>85</b>	<b>12,085</b>	<b>15,115</b>
<b>National Parks in Region</b>	<b>--</b>	<b>6</b>	<b>983</b>	<b>6</b>	<b>983</b>	<b>989</b>	<b>5</b>	<b>969</b>	<b>974</b>			<b>634</b>			<b>614</b>
<b>Regional Total Adjusted</b>	<b>91</b>	<b>61</b>	<b>7696</b>	<b>61</b>	<b>7696</b>	<b>15,232</b>	<b>265</b>	<b>12,998</b>	<b>14,863</b>	<b>121</b>	<b>14,173</b>	<b>14,976</b>	<b>85</b>	<b>12,085</b>	<b>15,749</b>

<sup>^</sup>DC Metro Regional totals for under and over age 18 years not included for years with missing juvenile data

\*Montgomery County data for persons under the age of 21 years determined to be driver.



## Youth Data

**Table 19B: SNAPSHOT! Alcohol Related Crashes, Injuries, and Arrests for Persons Under 21 Years of Age By Region, 2008**

	Fatalities	Percentage of Alcohol-Related	Crashes	Percentage of Alcohol-related Crashes	Injuries	Percentage of Alcohol-related Inju-	Arrests	Percentage of Alcohol-related Arrests
<b>District of Columbia</b>	<b>n/a</b>	<b>n/a</b>	<b>n/a</b>	<b>n/a</b>	<b>n/a</b>	<b>n/a</b>	<b>n/a</b>	<b>n/a</b>
Maryland*								
Montgomery County	3	15.0%	146	21.2%	108	26.7%	243	6.3%
Prince George's County	14	2.6%	210	23.2%	203	35.5%	81	4.4%
<b>MD Regional Total</b>	<b>17</b>	<b>1.9%</b>	<b>356</b>	<b>22.3%</b>	<b>311</b>	<b>31.8%</b>	<b>324</b>	<b>5.7%</b>
Virginia								
Arlington County	0	n/a	23	9.3%	15	10.3%	22	3.2%
Fairfax County	1	50.0%	150	14.6%	79	13.8%	295	9.4%
Loudoun County	0	0.5%	36	14.5%	23	16.4%	66	8.1%
Prince William County	4	23.5%	65	15.9%	60	22.8%	174	7.9%
City of Alexandria	0	0.0%	10	9.6%	7	7.9%	20	3.9%
City of Fairfax	0	0.0%	5	19.2%	2	25.0%	16	8.8%
City of Falls Church	0	0.0%	0	0.0%	0	0.0%	0	0.0%
City of Manassas	0	0.0%	6	12.8%	1	6.7%	7	6.4%
City of Manassas Park	0	0.0%	2	33.3%	0	0.0%	n/a	n/a
<b>Northern Virginia Total</b>	<b>5</b>	<b>23.8%</b>	<b>297</b>	<b>14.0%</b>	<b>187</b>	<b>15.1%</b>	<b>600</b>	<b>7.8%</b>
<b>DC Metro Regional Total</b>	<b>22</b>	<b>23.7%</b>	<b>653</b>	<b>17.0%</b>	<b>498</b>	<b>21.6%</b>	<b>924</b>	<b>6.1%</b>
<b>National Parks in Region</b>	<b>4</b>	<b>30.8%</b>	<b>6</b>	<b>6.9%</b>	<b>5</b>	<b>12%</b>	<b>23</b>	<b>3.7%</b>
<b>Regional Total Adjusted</b>	<b>26</b>	<b>24.5%</b>	<b>659</b>	<b>16.7%</b>	<b>503</b>	<b>21%</b>	<b>947</b>	<b>6.0%</b>

^Regional totals do not include jurisdictions with missing data.

\*Montgomery County data for persons under the age of 21 years determined to be driver and "at fault" for accident

Source: Jurisdictional contacts, see specific contact in Methodology



The Washington Regional Alcohol Program (WRAP) and its community partners have joined together and renewed their efforts to create an effective combination of enforcement, public information, education and advocacy to decrease underage drinking. WRAP offers a YouthGuide as a resource to keep teens safe all year long.

## Methodology

Following is a listing of the agencies providing local jurisdictional data:

- District of Columbia:
  - Metropolitan Police Department
  - U.S. Park Police
- Maryland
- State of Maryland: Maryland State Police
  - Prince George's County Police Department
  - Montgomery County Department of Police
- Virginia
  - State of Virginia: Virginia Department of Motor Vehicles, 2008 Crash Facts
  - Department of Judicial Information Technology Office of Executive Secretary Supreme Court Of Virginia
  - Arlington County Police Department
  - Fairfax County Police Department
  - Loudoun County Sheriff's Office
  - Prince William County Police Department
  - City of Alexandria Police Department
  - City of Fairfax Police Department
  - City of Falls Church Police Department
  - City of Manassas Police Department
  - City of Manassas Park Police Department

### Data Analysis

The findings in this report are based on data collected from organizations and agencies from across the Washington Metro region. Data tables provide totals within the Washington Metro region as well as individual jurisdictions. Analysis focuses on changes in motor vehicle fatalities, injuries, crashes, and arrests. Results are reported as numbers and percentage of alcohol-related incidents to total numbers across time.

### Data Limitations

It is important to note limitations that affected collection and analysis of this data, as they may limit comparability across jurisdictions and influence the level of reasonable analysis. Whenever possible, limitations are noted within the tables and figures. It is important that the reader keep the following in mind:

It should be noted that Montgomery County, Maryland has recently changed and enhanced their database system. While these changes allow them to capture data more accurately, comparisons to previous year's data should be made with caution. In addition, because this report tracks just two jurisdictions in Maryland, regional totals could also be affected.

There is no standardization for data definitions, collection, or recording within the Washington Metro region. Each agency has its own system of data collection, coding, and management. In addition, the range and

type of data collected may not be consistent across jurisdictions. The data reported and analyzed in this report reflect data as reported by contact agencies. Independent verification of data to ensure accuracy is not within the scope of this report.

Information on data collection and management systems and changes within jurisdictions was not solicited. In addition, changes in laws or judicial priorities may result in increased attention to specific data (e.g. blood alcohol level in driver fatalities related to stricter server laws). In some cases, this may result in missing data or data that appears inconsistent when examined against the same values for previous years. It is beyond the scope of this report to identify data methodology or priority changes for each jurisdiction.

Data on impaired driver involvement in motor vehicle fatalities, injuries, crashes and arrests was requested for alcohol-impairment only. Therefore, data are assumed to reflect only alcohol impairment and are reported in this way, although some cases may involve drug use.

The number of incidents, total and related to alcohol impairment, is very small for some jurisdictions. Due to the small numbers, jurisdictional analysis might easily misrepresent the problem. For example, an increase of one alcohol-related fatality would have little impact in a jurisdiction that saw 50 alcohol-related fatalities the previous year, but would appear to represent a significant change in a small jurisdiction with only one or two alcohol-related fatalities the previous year.

Data are reported and analyzed by absolute numbers only. At this time, information that would allow identification of comparable rates is unavailable. It is assumed that people involved in motor vehicle crashes and arrests may live within or outside the Washington Metro region. Collection of data on driver or passenger residence versus jurisdiction of accident is beyond the scope of this report. Calculating rates based on the Washington Metro region's population or number of licensed drivers would not accurately represent the problem since drivers may be from outside the jurisdiction.

Data on people under the age of 21 years is collected in an inconsistent manner among jurisdictions. Caution must be used in evaluation of this data due to varied definitions and missing data.

Many charts display two regional total numbers. The first, "DC Regional Total" is the total of the District of Columbia, the Maryland Region, and the Northern Virginia Region. The second regional number, "Regional Total Adjusted" includes data from the United States Park Police. Because the Park Police information has only been recently collected, it is shown separately and the two regional totals are shown so that comparisons with previous years can be done.

