

# How again did we arrive at the Aspirational Initiatives?

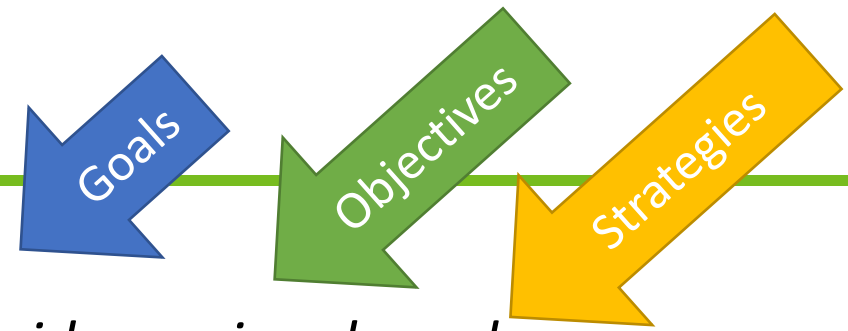
Stacy Cook, Transportation Planner  
Abigail Zenner, Communications Specialist

TPB Citizens Advisory Committee  
July 18, 2019

**visualize2045**  
A LONG-RANGE TRANSPORTATION PLAN FOR THE NATIONAL CAPITAL REGION



# TPB Policy Element



## Think Regionally, Act Locally:

*Local decision making process to consider regional needs.*



### Regional Transportation Priorities Plan, Goals:

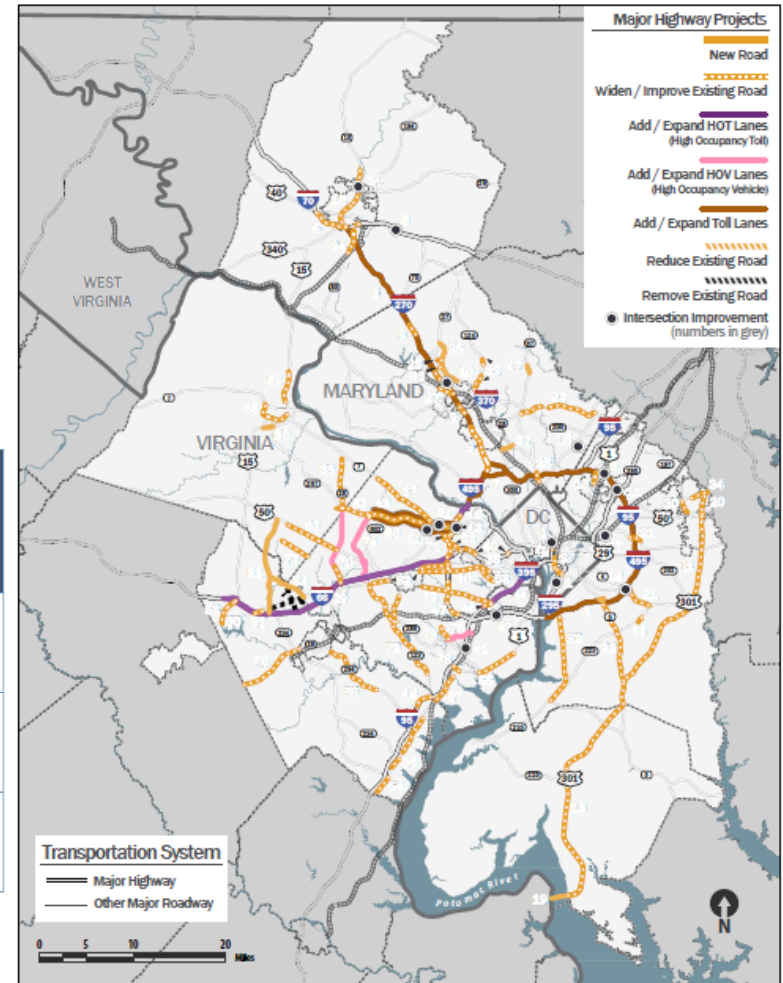
- Provide a Comprehensive Range of Transportation Options
- Promote Dynamic Activity Centers
- Ensure System Maintenance, Preservation, and Safety
- Maximize Operational Effectiveness and Safety
- Protect and Enhance the Natural Environment
- Support Interregional and International Travel and Commerce



# Projects in the Financially Constrained Element

- Includes more than **600 projects** that expand or change the region's highway or transit system capacity
- Projects adding system capacity

	Roadway	Managed Lanes (subset of roadway)	High-Capacity Transit*
Existing	17,048 lane miles	436 lane miles	292 miles
Added by Visualize 2045	1,388 lane miles	461 lane miles	124 miles
Total 2045	18,436 lane miles	897 lane miles	416 miles



# Aspirational Initiatives

## Why now?

The previous long-range transportation plan was not anticipated to provide satisfactory future performance nor move us close enough to our regional goals.



The TPB had a long-range plan task force to address this issue. The AFA and CAC had representatives that served on that task force.



# Aspirational Initiatives

## Why these 7 initiatives?

- TPB Consensus - Top performing, Regional, Multimodal, and Multidiscipline
- Two year systematic examination of local jurisdictions' plans
- Selected from 100+ ideas and an analysis of 10 “bundled” initiatives
- Includes mutually supportive projects, programs and policy strategies
- Informed by findings from many past scenarios studies
- Addresses identified challenges to achieving transportation goals



# Aspirational Initiatives: Quantitative Measures

	BASE	I1	I2	I3	I4	I5	I6	I7	I8	I9	I10
	2040 CLRP	Express Travel Network Operations	Improvements & Hot Spot Relief	Add'l North Bridge	BRT and Transitways	Commuter Rail	Metro rail Core Capacity	Transit Rail Extensions	Regional Land-Use Balance	Transit Fare Policy Changes	Travel Demand Management
<b>QUANTITATIVE MOES</b>											
Travel Time (SOV)	50.7	-2%	-4%	0%	-1%	-1%	-2%	-1%	-5%	0%	-4%
Travel Time (HOV)	58.9	-5%	-4%	-1%	-1%	-1%	-1%	-1%	-6%	<1%	-6%
Travel Time (Transit)	53.9	-1%	-2%	<-1%	-1%	<1%	-6%	<-1%	-5%	1%	<1%
Daily Vehicle Hours of Delay	1.85 million	-11%	-8%	-3%	-2%	-2%	-9%	-3%	-19%	-3%	-24%
Jobs Accessible by Transit	523,000	2%	2%	<-1%	4%	1%	19%	10%	10%	0%	0%
Jobs Accessible by Auto	876,000	5%	8%	1%	1%	<1%	2%	1%	10%	<1%	10%
Mode Share: SOV	58.1%	<1%	3%	<1%	-1%	-1%	-4%	-1%	-2%	<1%	-8%*
Mode Share: HOV	11.6%	-1%	-7%	0%	-1%	-1%	-5%	-3%	-4%	-2%	24%*
Mode Share: Transit	24.6%	1%	-4%	<-1%	4%	2%	11%	5%	<1%	2%	6%*
Mode Share: Non-Motorized	5.6%	0%	0%	0%	<1%	<1%	<1%	<1%	29%	0%	16%*
Travel on Reliable Modes	11.5%	42%	-5%	-2%	6%	2%	9%	6%	0%	3%	-3%
VMT daily	141.91 million	<1%	2%	1%	<-1%	<1%	-1%	-1%	-3%	-1%	-6%
VMT daily per capita	21.17	<1%	2%	1%	<-1%	<1%	-1%	-1%	-6%	-1%	-6%
Share of Households in Zones with High-Capacity Transit	39.9%	0%	0%	<-1%	25%	<1%	<1%	17%	9%	0%	0%
Share of Jobs in Zones with High-Capacity Transit	57.7%	0%	0%	<-1%	15%	<1%	0%	13%	2%	0%	0%
VOC Emissions	18.9	0%	-3%	1%	-1%	0%	-2%	-1%	-4%	-1%	-8%
NOx Emissions	18.8	0%	0%	1%	0%	0%	-2%	-1%	-4%	-1%	-7%
CO <sub>2</sub> Emissions	47,082.3	0%	-1%	1%	-1%	0%	-2%	-1%	-4%	-1%	-7%

\*Mode shares reflect trips taken. Due to telework, actual number of transit trips declines; bicycle/pedestrian stays flat; HOV increases slightly.



# Aspirational Initiatives: Qualitative Measures

	BASE	I1	I2	I3	I4	I5	I6	I7	I8	I9	I10
CHALLENGES	2040 CLRP	Express Travel Network	Operational Improvements & Maintenance Relief	Add'l Northern Bridge	BRT and Transitways	Commuter Rail	Metro rail Core Capacity	Transit Rail Extensions	Optimize Regional Land-Use Balance	Transit Fare Policy Changes	Travel Demand Management
Road Congestion		Medium	Medium	Low	Low	Low	Medium	Low	High	Low	High
Transit Crowding		Neutral	Neutral	Neutral	Neutral	Neutral	High	Low	Low	Low	Medium
Inadequate Bus Service		Medium	Neutral	Neutral	High	Neutral	Neutral	Low	Neutral	Neutral	Neutral
Access to Bike/Ped		Neutral	Neutral	Neutral	Medium	Low	Medium	Medium	High	Neutral	Neutral
Development around Metrorail		Neutral	Neutral	Neutral	Medium	Neutral	Low	High	High	Neutral	Neutral
Housing & Job Location		Neutral	Neutral	Neutral	Medium	Neutral	Neutral	Medium	High	Neutral	Neutral
Metro rail Repair Needs		Neutral	Neutral	Neutral	Neutral	Neutral	Low	Low	Neutral	Neutral	Neutral
Roadway Repair Needs		Low	Low	Low	Neutral	Neutral	Neutral	Neutral	Neutral	Neutral	Neutral
Incidents and Safety		Low	Low	Low	Low	Low	Low	Low	Medium	Low	High
Pedestrian & Bicyclist Safety		Neutral	Low	Neutral	Neutral	Low	Low	Low	Low	Neutral	Low
Environmental Quality		Neutral	Low	Low	Neutral	Neutral	Low	Low	Medium	Low	High
Open Space Development		Neutral	Neutral	Low	Neutral	Neutral	Neutral	Neutral	Medium	Neutral	Neutral
Bottlenecks		Medium	Medium	Low	Neutral	Neutral	Medium	Neutral	Medium	Low	High
Reliable Access to Intercity Hubs		High	Low	Low	Low	Low	Medium	Medium	Low	Neutral	Low
	BASELINE										
<b>KEY:</b>	High	Medium	Low	Neutral	Negative						



# TPB's Aspirational Initiatives

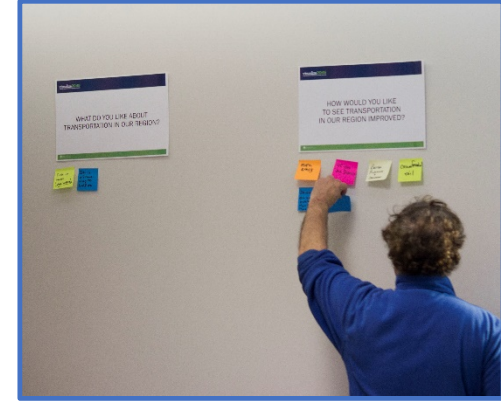
Strategies

- Bring jobs & housing closer together
- Expand BRT & transitways
- Move more people on Metrorail
- Provide more telecommuting & other commuting options
- Expand the express highway network
- Improve walk & bike access to transit
- Complete the National Capital Trail

Wait a minute - why not equity, safety, environmental health or other issues?







# 'Speakeasy'

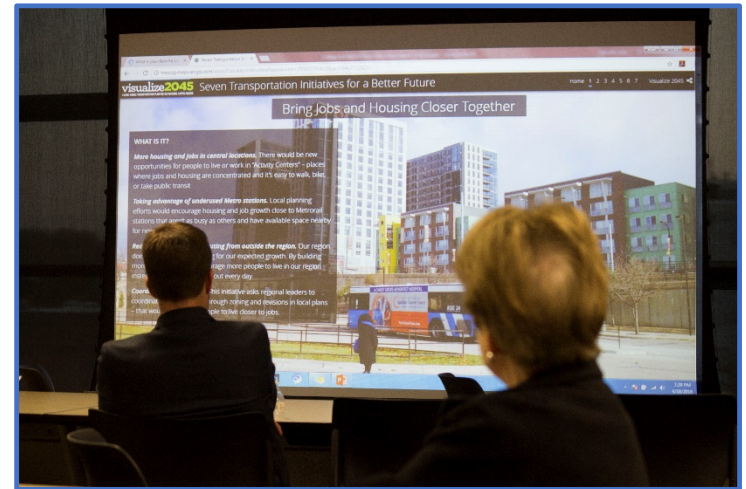
Please help us make the aspirational initiatives more accessible to everyone



# Making the initiatives accessible

As you read the materials, what did you find..

- that is not quite clear, or
- not easy to understand?



# Making the initiatives accessible

---

Do you have any ideas for changing the language or presentation to make the content easier to understand?

Is there any visual element that could be provided to make the initiatives more accessible?



# Making the initiatives accessible

---

- Where in your jurisdiction (or in the region) are there places that have either been improved and are an example of the initiative?
- What places could be improved with a project related to the initiatives?
- Are there any other actions that localities are or could be undertaking to support the initiatives?



## Stacy Cook

TPB Principal Planner  
(202) 962-3335  
scook@mwkog.org

## Abigail Zenner

TPB Communications Specialist  
(202) 962-3237  
azenner@mwkog.org

[Visualize2045.org](http://Visualize2045.org)

---

Metropolitan Washington Council of Governments  
777 North Capitol Street NE, Suite 300  
Washington, DC 20002



National Capital Region  
**Transportation Planning Board**