

Greater Washington 2050

COG's A Regional Action Plan for the 21st Century



DRAFT FOR PUBLIC RELEASE AND COMMENT
10/14/09 to 11/30/09

Region Forward

Greater Washington 2050:
COG's Vision for the National Capital Region
in the Twenty-First Century

PLANNING EVOLUTION:


18th Century

20th Century

21th Century


URBAN NODES

NODES-AND-LATTICE



1998 TPB's Vision
THE VISION
 GOALS, OBJECTIVES, AND STRATEGIES
 FOR OUR TRANSPORTATION FUTURE

2002 Regional Activity Centers



**National Capital Region
 Climate Change Report**
 Prepared by the Climate Change Tasking Committee for the
 Metropolitan Washington Council of Governments Board of Directors
 Adopted November 12, 2008



**Why plan for
 2050?**





Private Sector Trends



Urban Land Institute:
Top 3 Development Trends

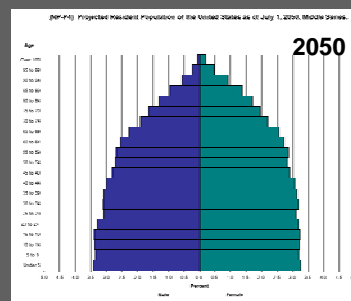
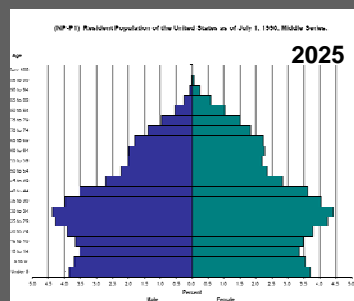
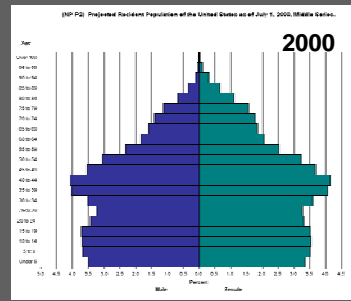
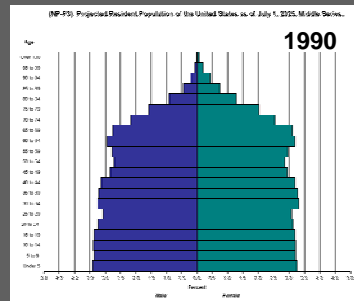
1. Mixed-Use communities
2. Transit-Oriented Development
3. Go Green



Source: Payton Chung / CNU Image Bank

6

Demographic Trends



THINKING BIG:

- 2005 ULI Reality Check on Growth
- 2005 Potomac Conference
- 2006 Envision Greater Washington
- 2008 Greater Washington 2050

Source: ULI Washington



2050 SCENARIO THINKING

Strategies for any future



TEN BIG MOVES

pursue transit oriented development

leverage emerging sustainable

technologies **emphasize green**

economic development develop

greater washington as a knowledge hub

strengthen regionalism use financial

innovations **ensure availability of**

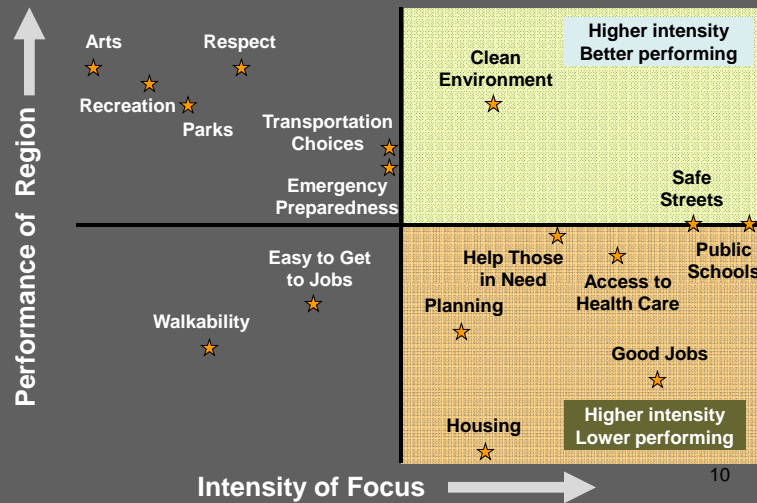
moderate and low-cost housing

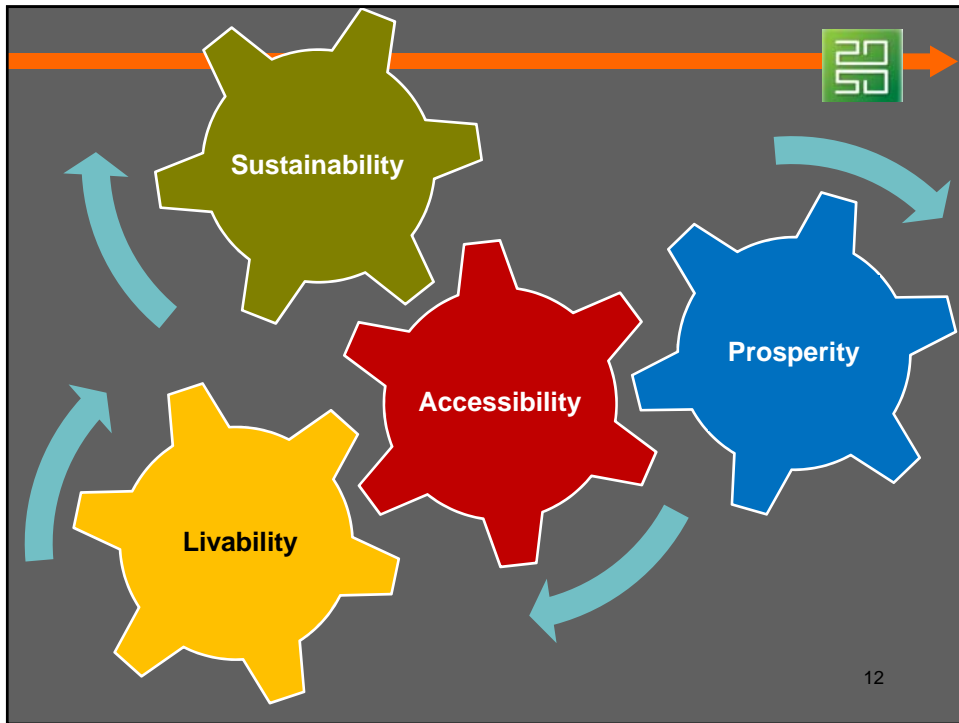
focus on quality of life **improve**

public education promote health



SURVEY FEEDBACK









Region Forward

- ✓ Goals
- ✓ Targets
- ✓ Indicators
- ✓ Compact





Regional Goals:

 Land Use	 Transportation	 Environment
 Climate & Energy	 Economic	 Housing
 Health	 Education	 Public Safety

Accessibility



Transportation Goal

A transportation system that maximizes community connectivity and walkability, and minimizes ecological harm to the region & world beyond

15

Sustainability



Climate & Energy Goal

Efficient public and private use of energy region-wide, with reliance upon renewable energy and alternative fuels for buildings, vehicles, and public transportation

Prosperity



Education Goal

Make our region a pre-eminent knowledge hub, through educational venues, workforce development, and institutional collaboration

Livability



Health Goal

Healthy Communities with greater access to quality health care and a focus on wellness and prevention

TARGETS & INDICATORS

Measuring Regional Progress

— 2050

— 2020

— 2012

Accessibility

2020: Housing + Transportation Cost in Activity Centers will not exceed 45% of AMI

Capture 75% of commercial construction & 50% of households in Activity Centers

Tysons Corner

All Regional Activity Centers will have transit

Sustainability

By 2025 achieve 100% of Chesapeake Bay Water Quality Goals

By 2020 All new residential & commercial buildings LEED Silver

2012 Reduce bad air days below 2008 levels

21

This slide features an aerial rendering of a modern urban development. The scene includes multi-story buildings with green roofs, a waterfront area with boats, and a mix of residential and commercial structures. A green icon with the number 20 and an arrow is positioned in the top right corner. Three yellow callout boxes with lines pointing to specific areas in the rendering contain the following text: 'By 2025 achieve 100% of Chesapeake Bay Water Quality Goals' (pointing to the waterfront), 'By 2020 All new residential & commercial buildings LEED Silver' (pointing to a building with a green roof), and '2012 Reduce bad air days below 2008 levels' (pointing to a green space). The number '21' is located in the bottom right corner of the image area.

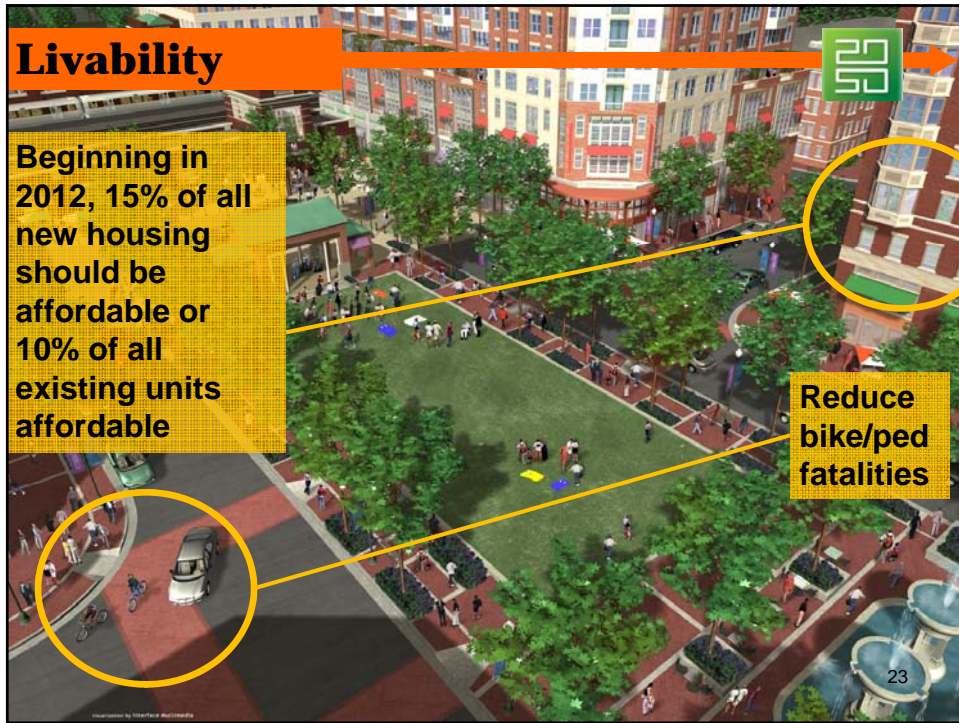
Prosperity

Improve access to vocational training

Median wage growth exceeds inflation

22

This slide features a nighttime rendering of a vibrant urban street scene. The scene includes multi-story buildings with illuminated windows, a pedestrian walkway with people, and a restaurant named 'particulate' with outdoor seating. A green icon with the number 20 and an arrow is positioned in the top right corner. Two yellow callout boxes with lines pointing to specific areas in the rendering contain the following text: 'Improve access to vocational training' (pointing to a building with a large window) and 'Median wage growth exceeds inflation' (pointing to a group of people walking). The number '22' is located in the bottom right corner of the image area.



Next Steps



Virtual 2050



2050 Toolbox



2050 Report Card



2050 Talkback

Engage



We need your feedback!

www.greaterwashington2050.org