

# The U.S. Census Bureau's New Dissemination Platform

Metropolitan Washington Council of Governments

April 3, 2018

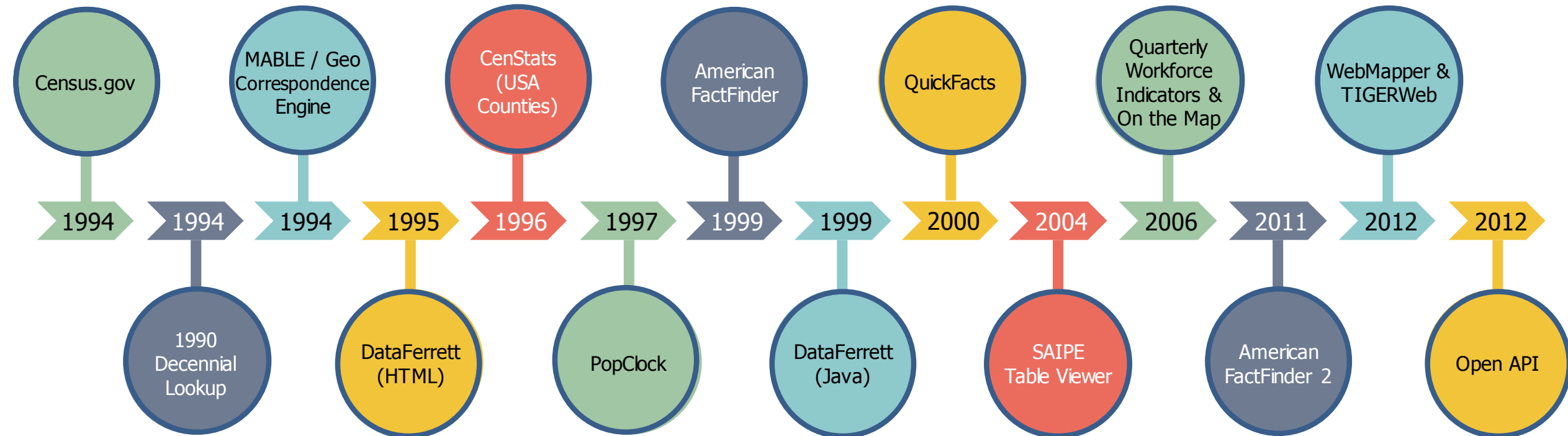
# Census Bureau Mission

To serve as the leading source of quality data about the nation's people, places, and economy.

We honor privacy, protect confidentiality, share our expertise globally, and conduct our work openly.



# Census Bureau Online History



# Census.gov Today

### POPULATION CLOCK

U.S. Population  
**326,394,062**

World Population  
**7,439,199,200**

### QuickFacts UNITED STATES

### NEW U.S. and World Population Clock

Statistics available for more than 200 countries

Canada

World

Population by Age and Sex

U.S. Trade in Manufactured Goods

Top Exports U.S. Exports

Access the new population clock via [www.census.gov/popclock](http://www.census.gov/popclock)

### FactFinder

Community Facts

Guided Search

Advanced Search

Download Center

Popular Topics

More and More

### Census Business Builder: Small Business Edition

1. What type of business do you want to start?

2. Select your business type and use key demographic and economic data to help guide their research into opening a new or expanding their existing business.

3. Browse the data on a map

4. Create a report

What About Other Businesses Like Mine?

Who Are My Potential Customers?

### My Tribal Area

Enter name of Tribal Area

OR

Select a State

People Jobs Housing Economy

The Census Bureau collects data for the American Indian (AIAN) population and publishes counts, estimates, and statistics by Tribal Area quick and easy access to selected statistics for American Community Survey (ACS). The ACS provides detailed demographic, social, economic, and housing statistics every year for the nation's communities. The data is powered by the Census Application Programming Interface (API).

Source: 2011-2015 American Community Survey 5-Year Estimates

U.S. Department of Commerce, Economics and Statistics Administration, U.S. Census Bureau, [census.gov](http://census.gov)

POWERED BY The American Community Survey

### The Opportunity Project

Bringing together government and digital tools that help start

Learn More

### My Congressional District

Now Includes Business Statistics for Congressional Districts

Congressional District

Population

Total for all 50 states

Agriculture, Forestry, Fishing and Hunting

Manufacturing and construction

Retail trade

Health care and social assistance

Finance and insurance

Real estate and rental and leasing

Professional, scientific, and technical services

U.S. Department of Commerce, Economics and Statistics Administration, U.S. Census Bureau, [census.gov](http://census.gov)

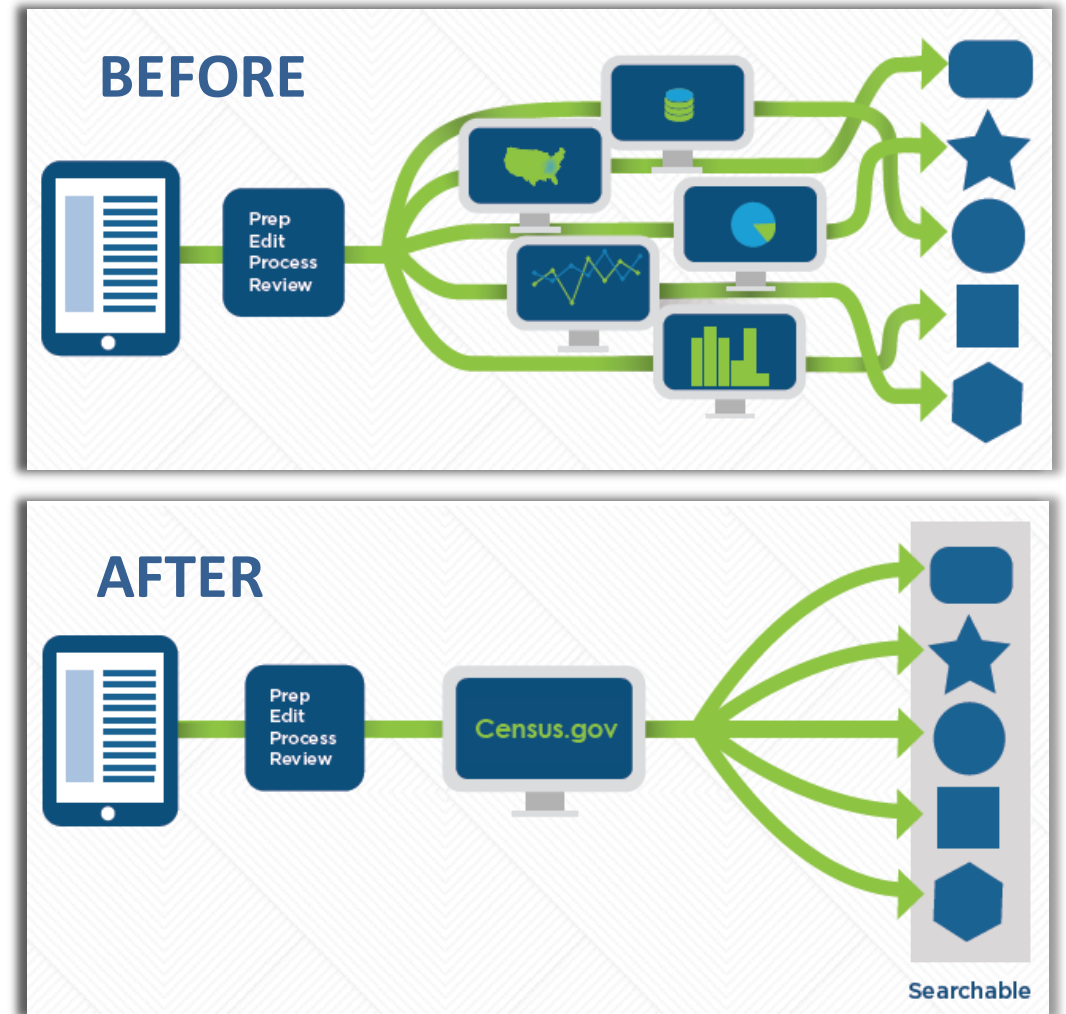
# Call to Action

- *The Census Bureau collects and disseminates data on a variety of topics, through a vast array of data tools and apps.*
- *But, customers express frustration finding and using Census Bureau content online, so it's time to improve the process.*

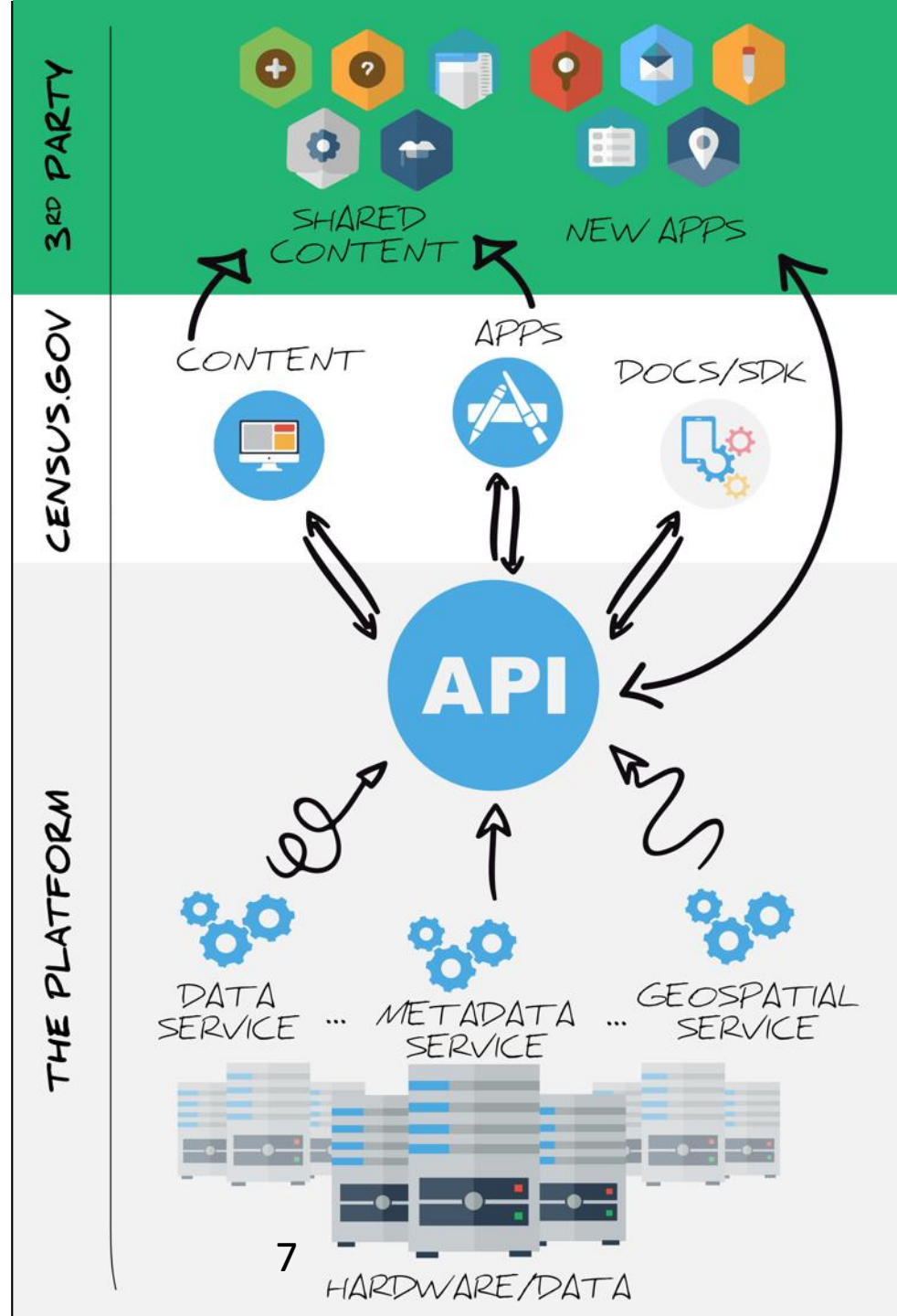


# What is Enterprise Dissemination?

- Centralized and standardized metadata, data, and software
- A customer-oriented platform for easy access to Census Bureau data
- A single, efficient search for all data, content, and the API



# The New Dissemination Platform: How It All Works



# Application Programming Interface (API)

Data service that is the foundation of the Census Bureau's new data dissemination platform

Uses:

- Supports mobile and web applications
- Drives interactive data visualizations
- Connects to statistical analysis software like SAS and R

Advantages:

- Access only the variables and geographies needed
- No need to host data on another server



# API Discovery Tool

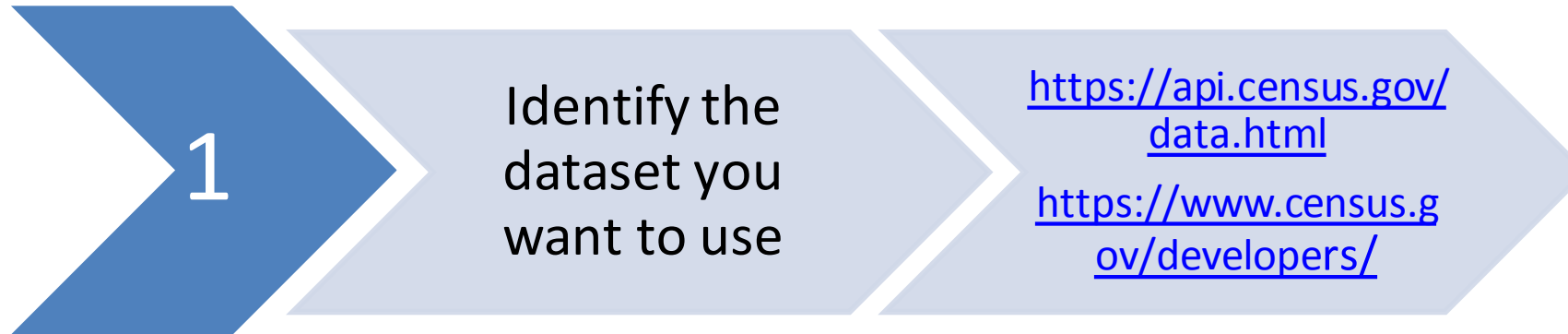
<https://api.census.gov/data.html>

*Census API: Datasets in /data/2013/acs1 and its descendants*

Title	Description	Vintage	Dataset Name	Geography List	Variable List	Tag List	Developer Examples	Documentation	API Base URL
2013 American Community Survey - Summarized Data: 1-Year Summary File	The American Community Survey (ACS) is a nationwide survey designed to provide communities a fresh look at how they are changing. The ACS replaced the decennial census long form in 2010 and thereafter by collecting long form type information throughout the decade rather than only once every 10 years. Questionnaires are mailed to a sample of addresses to obtain information about households -- that is, about each person and the housing unit itself. The American Community Survey produces demographic, social, housing and economic estimates in the form of 1-year, 3-year and 5-year estimates based on population thresholds. The strength of the ACS is in estimating population and housing characteristics. The 2012 data provide key estimates for each of the topic areas covered by the ACS for the nation, all 50 states, the District of Columbia, Puerto Rico, every congressional district, every metropolitan area, and all counties and places with populations of 65,000 or more. Although the ACS produces population, demographic and housing unit estimates, it is the Census Bureau's Population Estimates Program that produces and disseminates the official estimates of the population for the nation, states, counties, cities and towns, and estimates of housing units for states and counties. For 2010 and other decennial census years, the Decennial Census provides the official counts of population and housing units.	2013	acs1	<a href="#">geographies</a>	<a href="#">variables</a>	<a href="#">tags</a>	<a href="#">examples</a>	<a href="#">documentation</a>	<a href="http://api.census.gov/data/2013/acs1">http://api.census.gov/data/2013/acs1</a>
2013 American Community Survey - Data Profiles: 1-Year Data Profile	The American Community Survey (ACS) is a nationwide survey designed to provide communities a fresh look at how they are changing. The ACS replaced the decennial census long form in 2010 and thereafter by collecting long form type information throughout the decade rather than only once every 10 years. Questionnaires are mailed to a sample of addresses to obtain information about households -- that is, about each person and the housing unit itself. The American Community Survey produces demographic, social, housing and economic estimates in the form of 1-year, 3-year and 5-year estimates based on population thresholds. The strength of the ACS is in estimating population and housing characteristics. The 2012 data profiles provide key estimates for each of the topic areas covered by the ACS for the nation, all 50 states, the District of Columbia, Puerto Rico, every congressional district, every metropolitan area, and all counties and places with populations of 65,000 or more. Although the ACS produces population, demographic and housing unit estimates, it is the Census Bureau's Population Estimates Program that produces and disseminates the official estimates of the population for the nation, states, counties, cities and towns, and estimates of housing units for states and counties. For 2010 and other decennial census years, the Decennial Census provides the official counts of population and housing units.	2013	acs1 > profile	<a href="#">geographies</a>	<a href="#">variables</a>	N/A	<a href="#">examples</a>	<a href="#">documentation</a>	<a href="http://api.census.gov/data/2013/acs1/profile">http://api.census.gov/data/2013/acs1/profile</a>

2 datasets

# API Request – Four Easy Steps



# API Request – Four Easy Steps

3

Request the  
variables and  
geographies

?get=variable,names,separated,by,commas  
&for=geography level:code

4

Put it all together

[https://api.census.gov/data/2013/acs1?get=NAME,B17001\\_002E&for=state:\\*](https://api.census.gov/data/2013/acs1?get=NAME,B17001_002E&for=state:*)

# Example: Output From the API

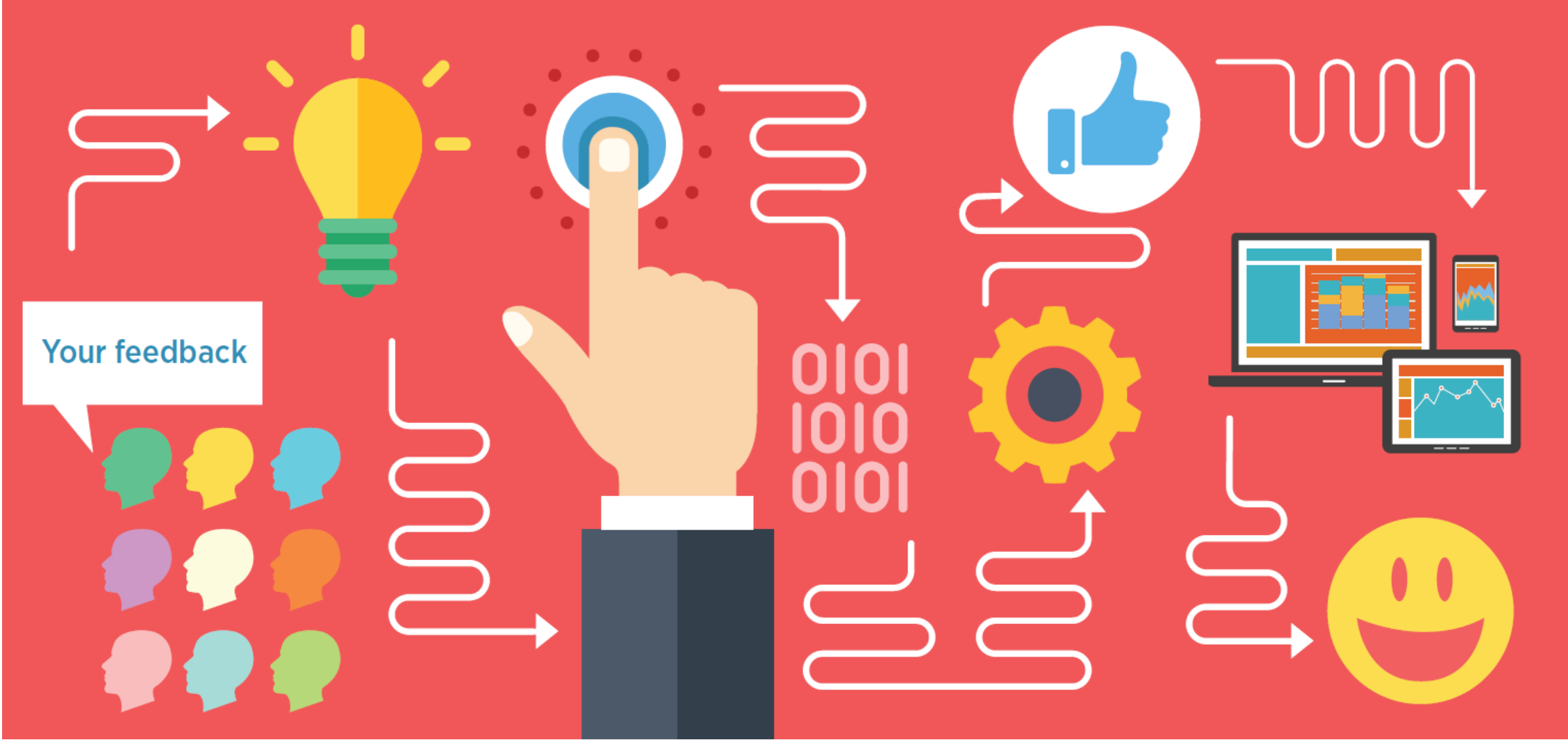
[https://api.census.gov/data/2013/acs1?get=NAME,B17001\\_002E&for=state:\\*](https://api.census.gov/data/2013/acs1?get=NAME,B17001_002E&for=state:*)

This URL returns data in JSON format that looks like this:

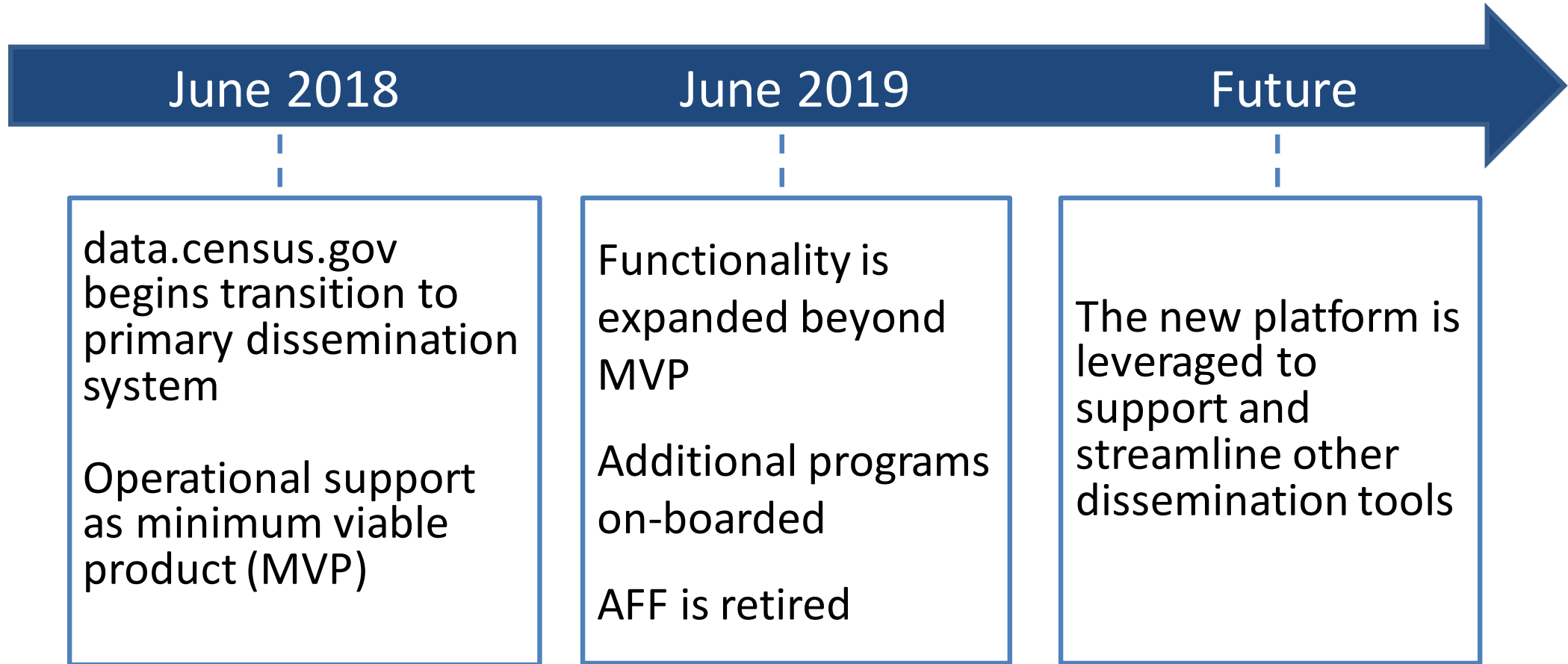
```
[["NAME","B17001_002E","state"],  
["Alabama","883371","01"],  
["Alaska","67016","02"],  
["Arizona","1206460","04"],  
["Arkansas","565469","05"],  
["California","6328824","06"],
```

Continued...

# Improving User Experience Depends on You!



# Upcoming Milestones



# June 2018 Release Goals

data.census.gov  
transitions to primary  
dissemination system

Achieves full  
operational support as  
minimum viable  
product (MVP)

Goal	Focus
Support basic dissemination functionality	<ul style="list-style-type: none"> <li>• Search and Relevancy</li> <li>• View and customize table</li> <li>• Add more data</li> <li>• Performance</li> </ul>
Support Decennial 2018 End to End Test	<ul style="list-style-type: none"> <li>• SF1 with support across all geographies</li> <li>• Embargo</li> <li>• Information Access (Download/Table)</li> </ul>
Serve as the primary dissemination system for ACS products	Basic dissemination functionality is available for GCT, GRT, Iterative Products, Tier 1 Products, and Geo components

# Capabilities

## Search & Discovery

### Search

- Census.gov Integration
- Search and Relevancy
- Advanced Search
- Results Pages

### Data Profiles

- Geo Profiles
- Topic Profiles
- Industry Profiles

### Data Visualizations

- Display and Customize graphs and charts
- Share and Export

### Developer Experience

- Pattern Library
- Query Builder
- Unified API

## Information Access

### Table

- Table Viewer
- Download
- Share and Export

### User Login

- Internal Login
- Embargo Process/Login

### Map

- Select geographies on a map
- Thematically map data
- Reference map
- Share and Export

### API

- Geo Access
- Data Access



# Questions/Feedback?

Check out our preview site at [data.census.gov](https://data.census.gov)

General feedback, please email: [cedsci.feedback@census.gov](mailto:cedsci.feedback@census.gov)

**Nesreen Khashan**

Data Dissemination Specialist

Customer Liaison & Marketing Services

U.S. Census Bureau

Cell: 202.510.6403

[nesreen.khashan@census.gov](mailto:nesreen.khashan@census.gov)

**Thank you!**