

BRIEFING ON PROPOSED ENHANCEMENTS TO THE TITLE VI AND ENVIRONMENTAL JUSTICE ANALYSIS

of the Constrained Long-Range Transportation Plan (CLRP)

Lyn Erickson, Plan Development and Coordination Director
Wendy Klancher, Principal Transportation Planner

National Capital Region Transportation Planning Board
December 21, 2016



National Capital Region
Transportation Planning Board

Purpose of Briefing

- Overview of Title VI and Environmental Justice requirements for the analysis of the CLRP
- Describe the new initiative to develop a map of areas with concentrations of low-income and/or minority populations
- Next Steps: TPB will be asked to adopt the map in January

Federal Requirements

Title VI: Civil Rights Act of 1964

Prohibit discrimination based on **race, color, or national origin** under any program or activity receiving Federal financial assistance

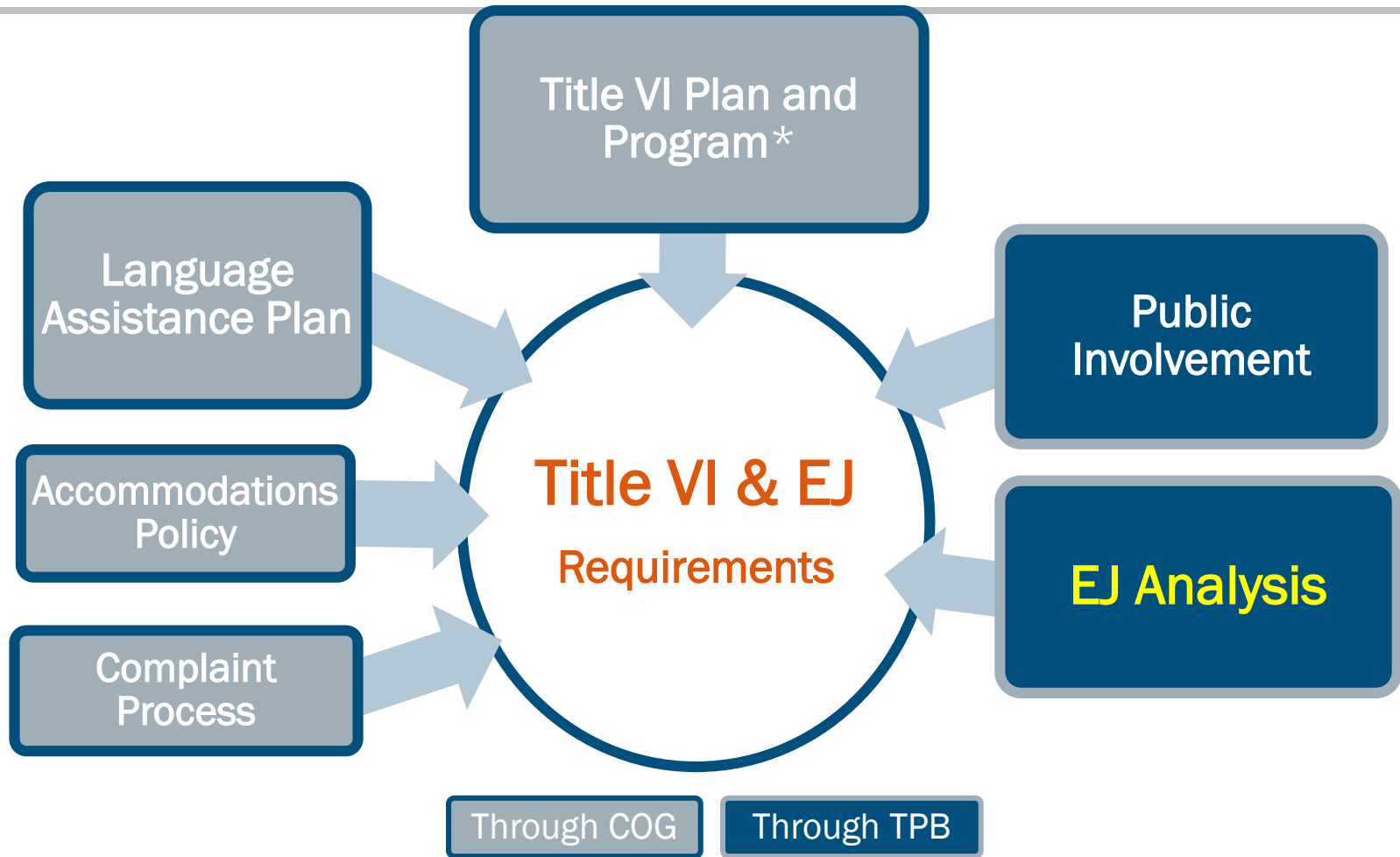


Environmental Justice

Executive Order 12898 (1994): Recipients of Federal funds must identify and avoid disproportionately high and adverse effects on **minority and low-income populations**



TPB Compliance with Title VI and EJ



*Includes Equal Employment Opportunity and Disadvantage Business Enterprise Policies



What is the EJ Analysis?

- Examine the CLRP for any **disproportionately high and adverse impacts** on low-income and minority populations

The findings are used to:


- Ensure compliance
- Inform the regional planning process about transportation needs of low-income and minority populations
- Potentially assist in local community planning initiatives



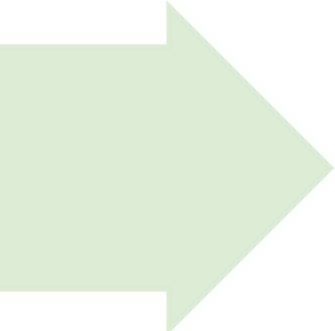
Enhancing the TPB Approach to EJ Analysis

- **Past Approach:** Identified transportation impacts at the regional level using a single measure (*Accessibility to jobs*)
- National scan of best practices among metropolitan planning organizations' (MPOs) analyses found:

The TPB's approach is typical and compliant but could be enhanced...



Many MPOs – Identify (“EJ Areas”) and use multiple transportation measures to examine impacts



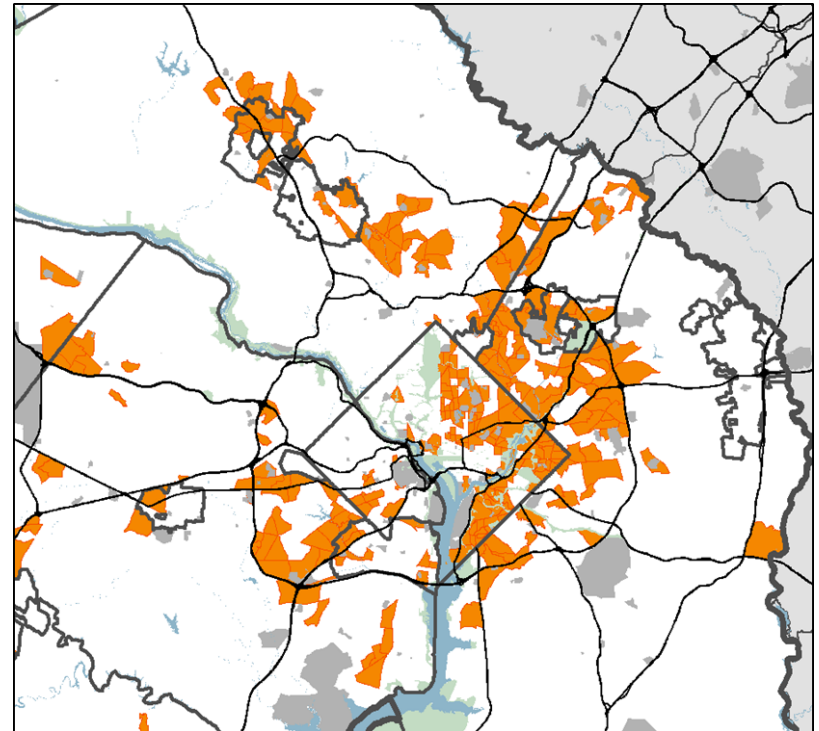
A Two-Phased Process

- **Phase 1: Identification of “communities of concern”**
 - Complete when the TPB approves the map
- **Phase 2: Examine the 2016 CLRP for Disproportionately High and Adverse Impacts on “communities of concern”**
 - Measures include accessibility to jobs, hospitals and educational institutions
- “Communities of concern” map will be used in other COG/TPB planning activities, and can be tailored by local jurisdictions for their purposes

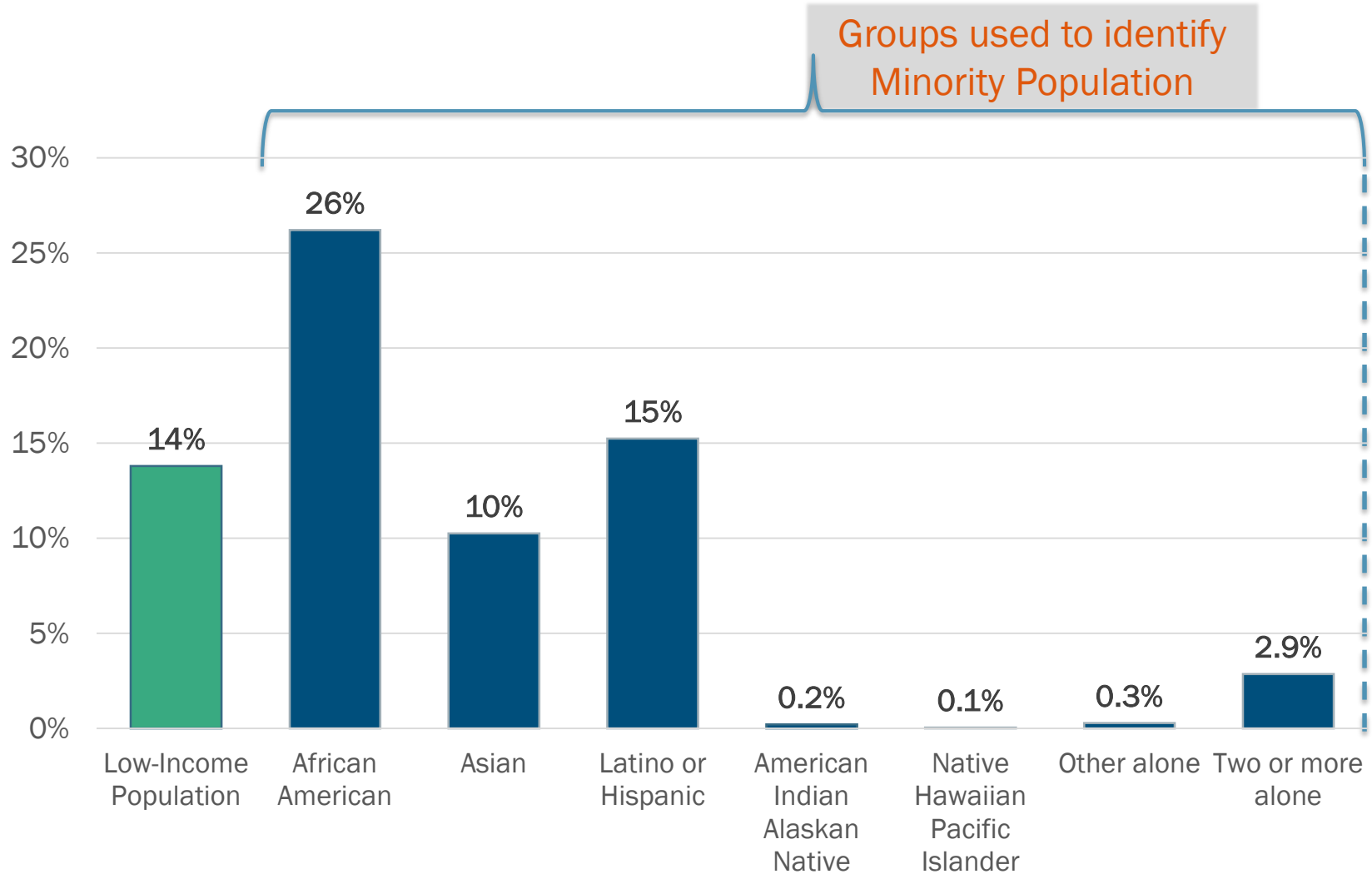
What are “communities of concern”?

Small geographic areas with high concentrations of low-income and/or minority populations

- Identified by TPB Staff
- In consultation with the local jurisdictions’ Planning Directors
- With input from the Technical Committee, the Citizens Advisory and Access for All Advisory Committees




Demographic Profile of the Region



Source: U.S. Census 2010-2014 American Community Survey;
Demographic categories are not discrete and therefore do not total 100%.



Index Scoring System

RATIO OF CONCENTRATION (ROC) (times the regional average)	INDEX SCORE				TOTAL INDEX SCORE
	Low-Income*	African American	Asian	Hispanic Or Latino	
Less than 1.5	0	0	0	0	Index scores for each population group are totaled (ranging from 0-15) 
Between 1.5 and 3.0	3.0 to 6.0	1.5 to 3.0	1.5 to 3.0	1.5 to 3.0	
Greater than 3.0	6.0	3.0	3.0	3.0	

Community of Concern (Total Index > 3.00)
 Not a Community of Concern (Total Index ≤ 3.00)

*Low-Income Index scores are weighted



Scoring Example: Census Tract 8038.01

(in Prince George's County, MD)

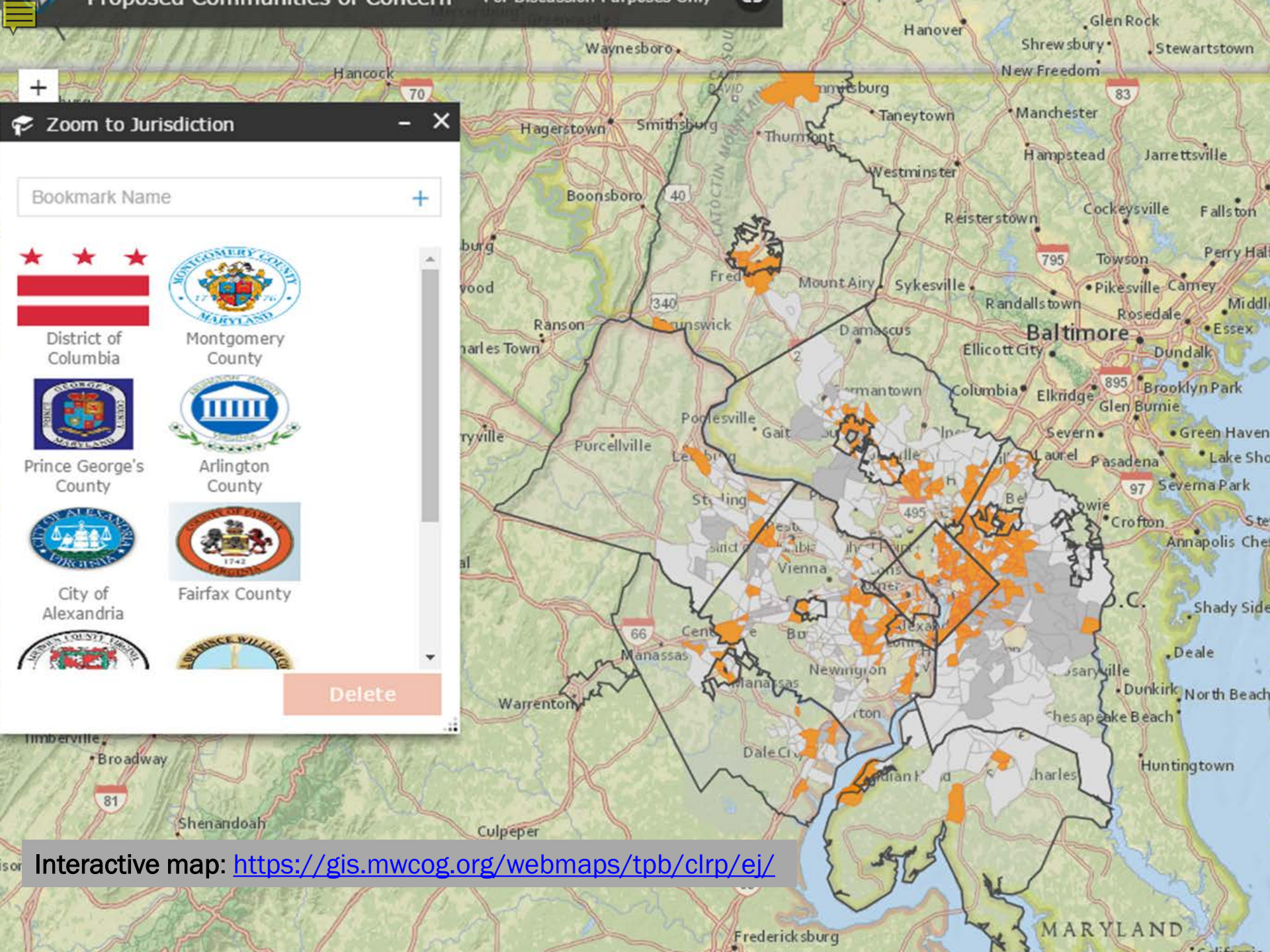
	Tract Percent	Ratio of Concentration	Index Score
Low Income	22.86%	1.7	3.4
African American	49.78%	1.9	1.9
Asian	1.85%	0.2	0.0
Hispanic or Latino	40.95%	2.7	2.7

Total Index Score
8.0

Community of Concern (Total Index > 3.00)

Not a Community of Concern (Total Index ≤ 3.00)





Zoom to Jurisdiction

Bookmark Name



District of Columbia



Montgomery County



Prince George's County



Arlington County



City of Alexandria



Fairfax County




Delete

Interactive map: <https://gis.mwcog.org/webmaps/tpb/clrp/ej/>



Turn Layers On/Off

Operational Layers

- TPB Planning Area Boundary
 - COG Regional Activity Centers
 - Communities of Concern
- Total Index Score
-  Greater than 3.00
 -  3.00
 -  1.50 - 2.99
- Low Income population
 - African American population
 - Asian population
 - Hispanic or Latino population

(1 of 3)

Communities of Concern
Census Tract 2001.03

Jurisdiction	Alexandria city, Virginia
Total Index Score	6.65
Low Income	1.71 times reg'l avg
African American	1.51 times reg'l avg
Asian	0.84 times reg'l avg
Hispanic or Latino	1.71 times reg'l avg

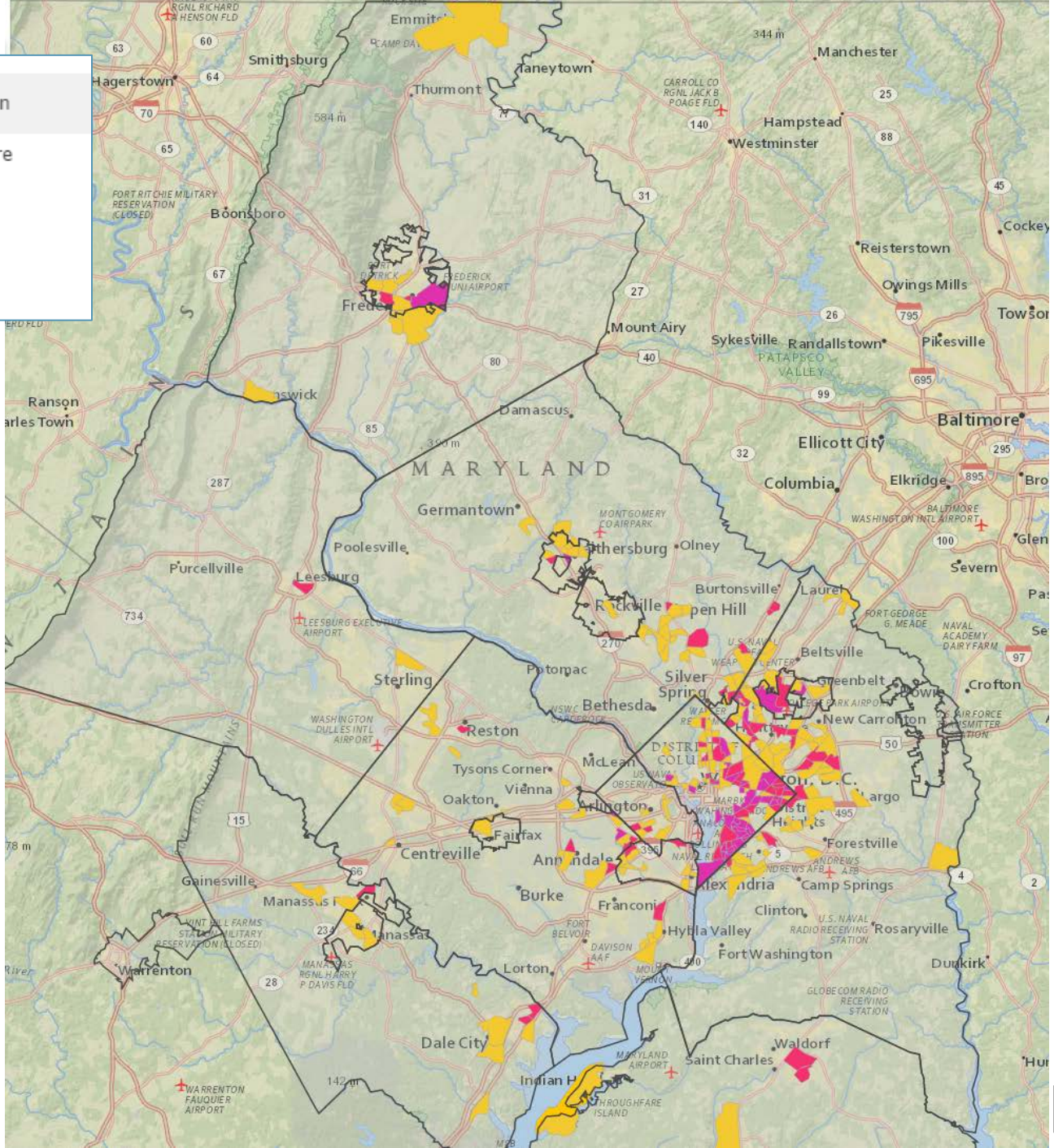
[Zoom to](#)



Low Income population

Low Income Index Score

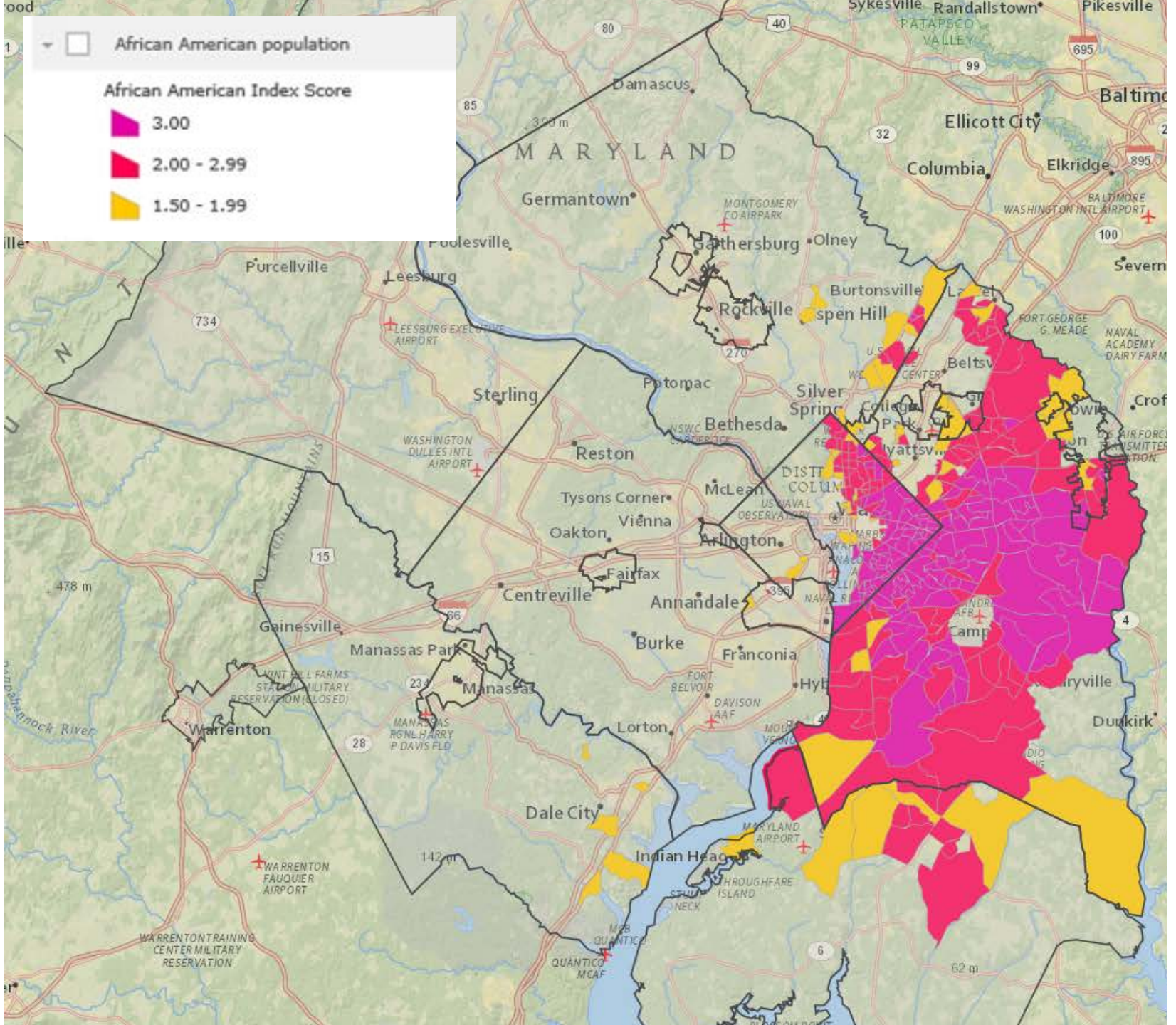
- 6.00
- 4.50 - 5.99
- 3.00 - 4.49



African American population

African American Index Score

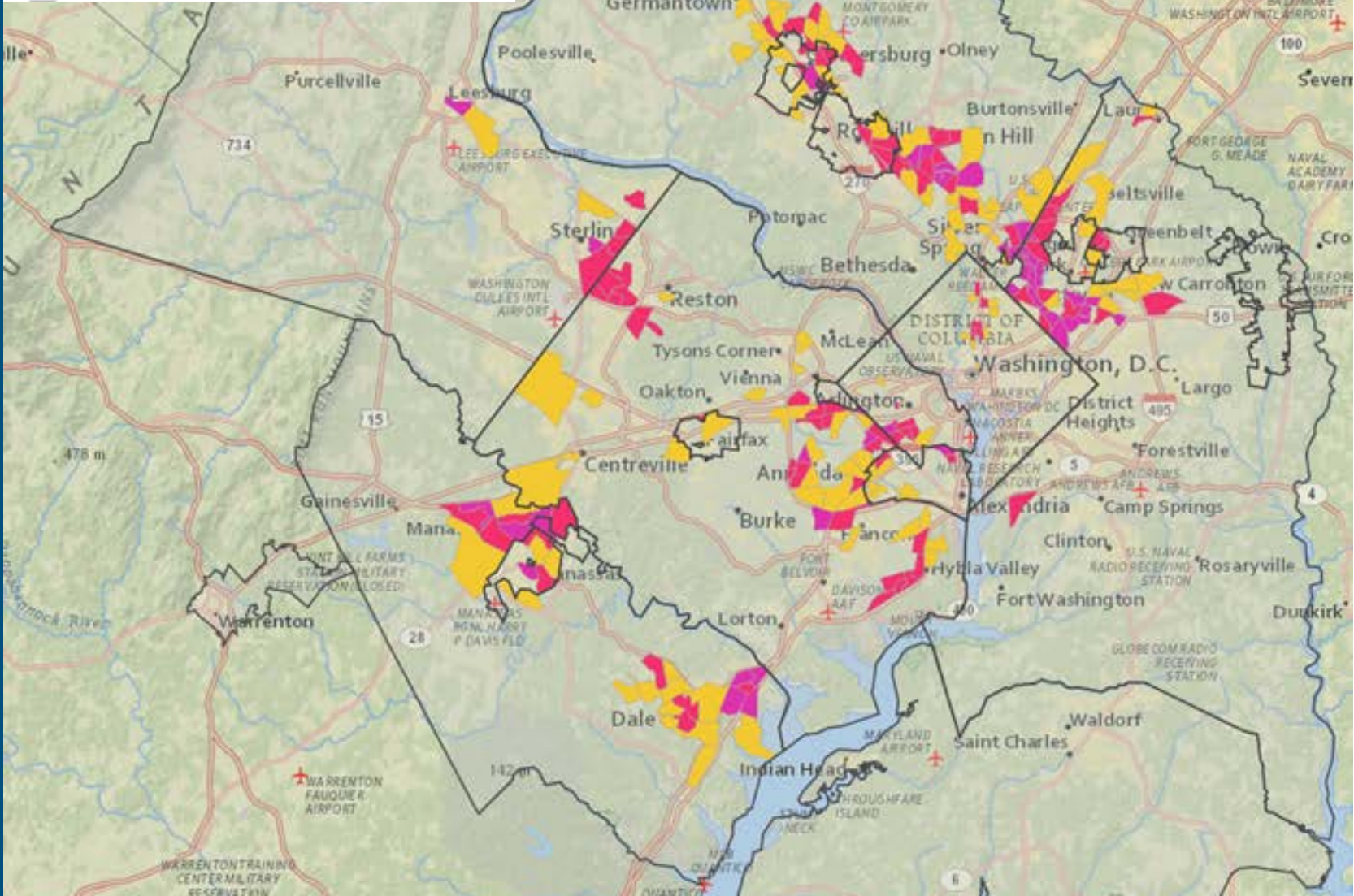
- 3.00
- 2.00 - 2.99
- 1.50 - 1.99



Hispanic or Latino population

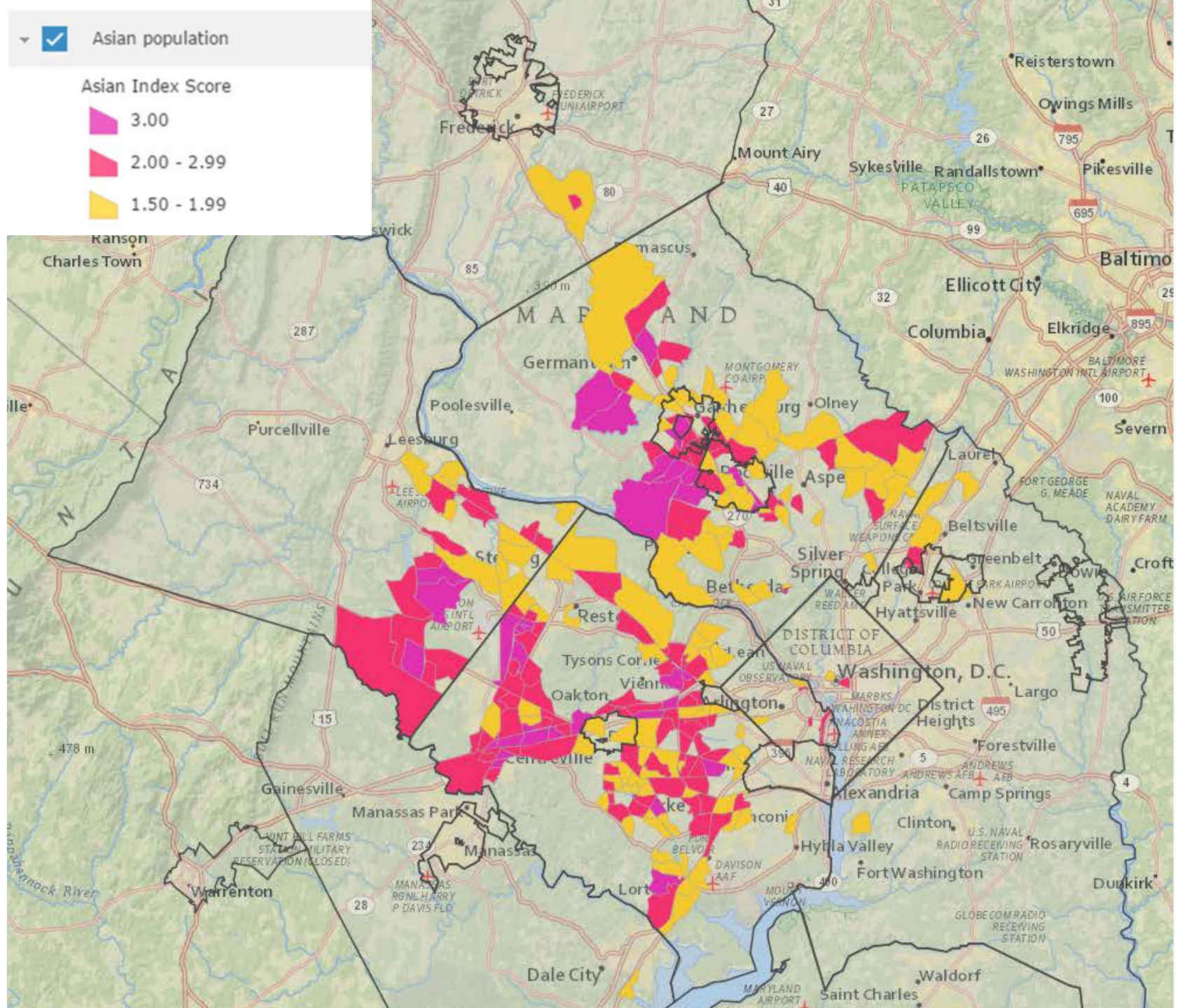
Hispanic or Latino Index Score

- 3.00
- 2.00 - 2.99
- 1.50 - 1.99



Asian population

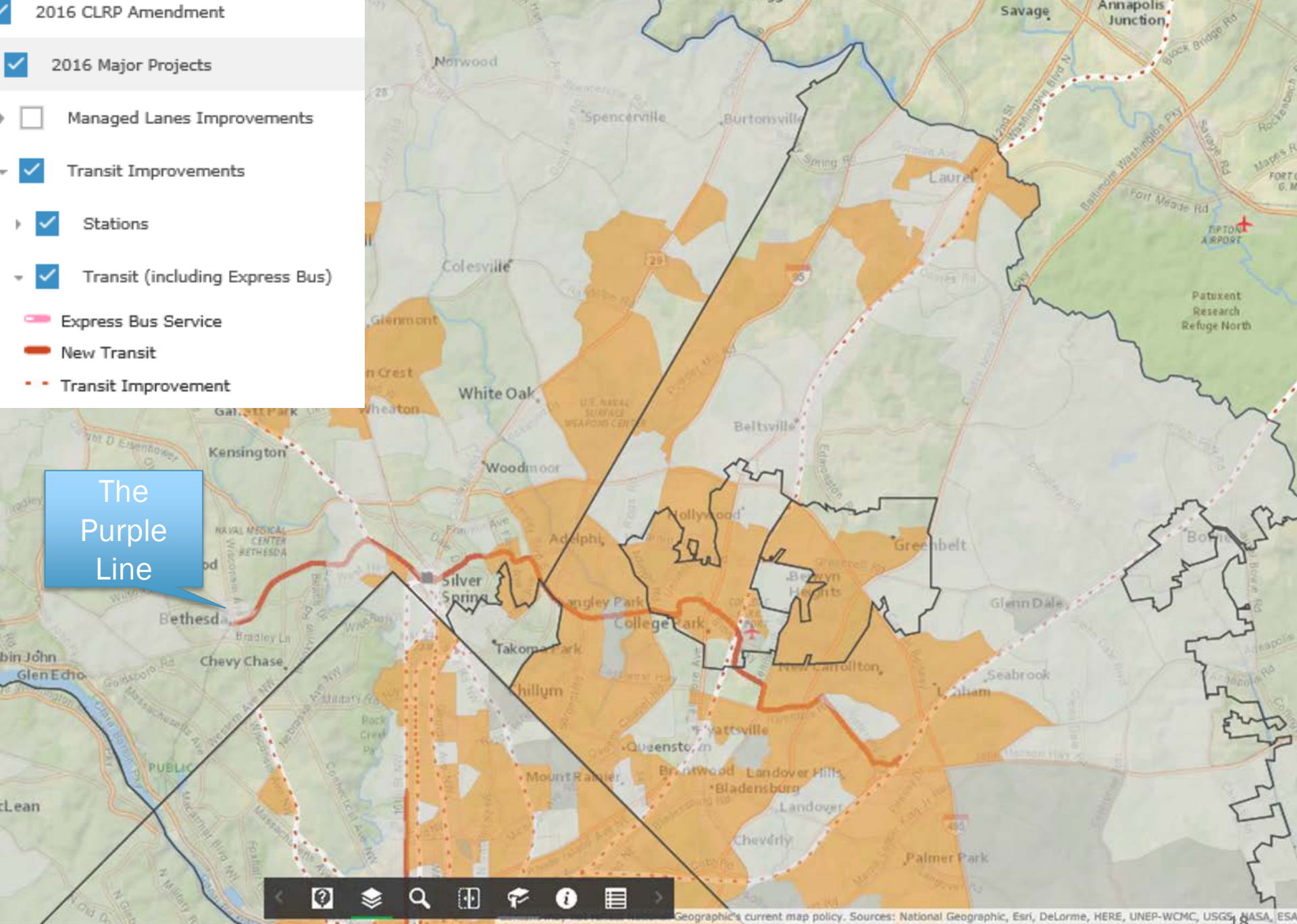
Asian Index Score



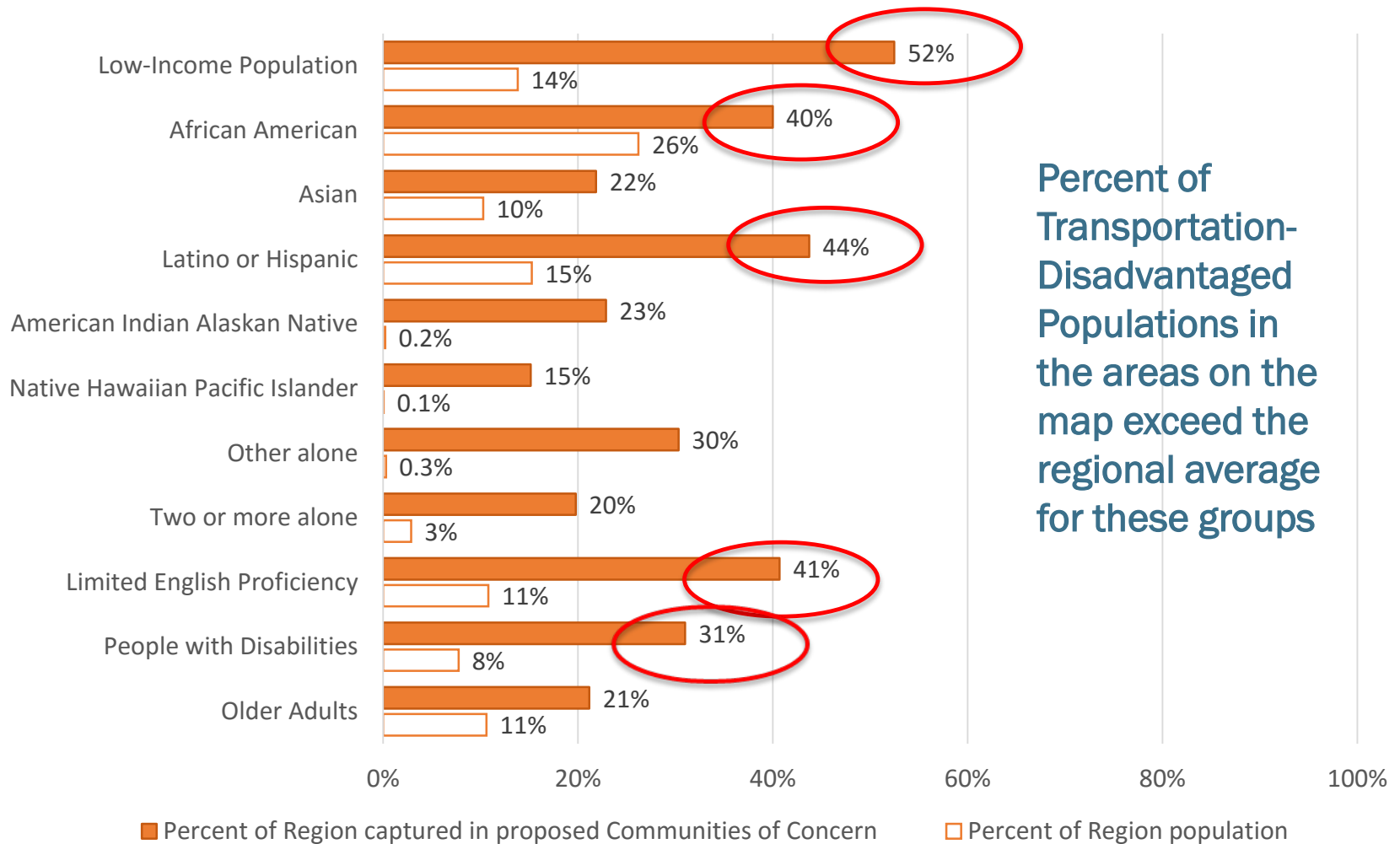
2016 CLRP Amendment

- 2016 Major Projects
 - Managed Lanes Improvements
 - Transit Improvements
 - Stations
 - Transit (including Express Bus)
 - Express Bus Service
 - New Transit
 - Transit Improvement

The Purple Line



The areas on the map represent multiple Transportation-Disadvantaged Populations



Next Steps

TPB is asked to adopt the regional map of “communities of concern”

- **January 2017**

TPB staff conducts EJ analysis of the 2016 CLRP

- **Feb - April 2017**

Technical Committee and TPB Briefed on findings of EJ Analysis

- **May – June 2017**

Lyn Erickson

Plan Development and Coordination Director

(202) 962-3319

lerickson@mwkog.org

Wendy Klancher

Principal Transportation Planner

(202) 962-3321

wklancher@mwkog.org

Sergio Ritacco

Transportation Planner

(202) 962-3232

sritacco@mwkog.org

mwkog.org/tpb

Metropolitan Washington Council of Governments

777 North Capitol Street NE, Suite 300

Washington, DC 20002



National Capital Region
Transportation Planning Board