

# Visualize 2045 Update Long-Range Transportation Plan

**Stacy M. Cook**  
TPB Transportation Planner

**Karen Armendariz**  
TPB Public Engagement Specialist

**Community Advisory Committee**  
**April 15, 2021**

**visualize**  
**2045** A long-range  
transportation plan  
for the National  
Capital Region

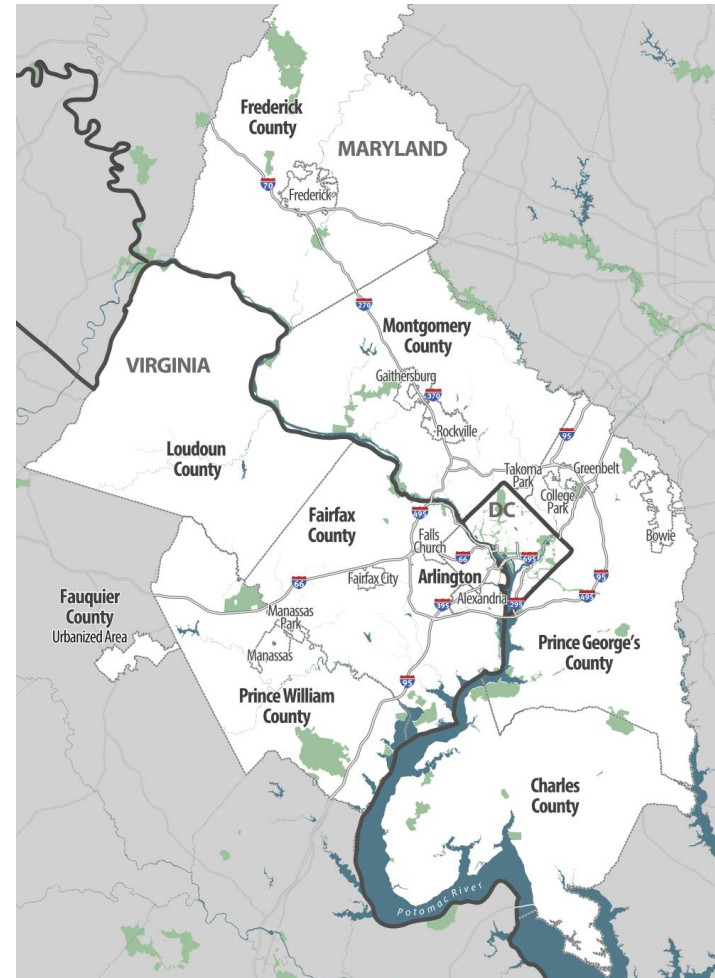


# What is an MPO?

- Regional transportation planning organization for the urbanized area.
- Serves as a representative group of local stakeholders of the region.
- Carries out a “Continuing, cooperative, and comprehensive” consultation process. (3Cs)
- Develops plans and programs that consider all transportation modes and support metropolitan community, and economic development.
- Works in conjunction with state air and transportation agencies to meet federal Clean Air Act standards.

# National Capital Region Transportation Planning Board

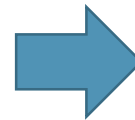
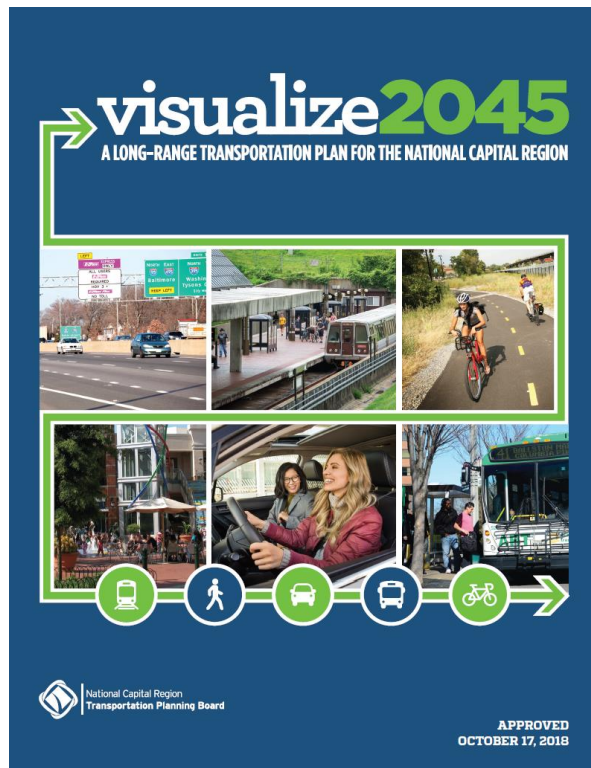
- Federally designated Metropolitan Planning Organization (MPO) for the Washington region
- 3,500 square miles in area
- Home to more than 5 million people and 3 million jobs
- Members include:
  - State transportation agencies
  - 23 local jurisdictions
  - State and DC legislatures
  - WMATA
  - Others



# TPB's Long-Range Transportation Plan

Approved October 2018

Underway: 2022 update



# visualize 2045

A long-range transportation plan  
for the National Capital Region



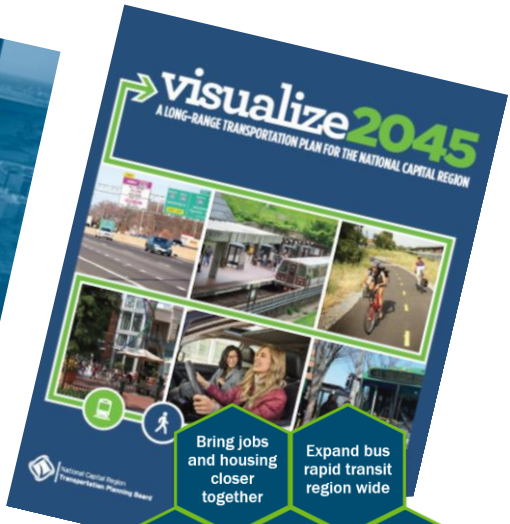
# Federal Requirements

- Requirements:
  - Quadrennial plan due in 2022, with a 20-year minimum horizon
  - 3 Cs – Comprehensive, Continuous, Coordination
  - Financial Constraint
  - Air Quality Conformity
  - Federal Planning Factors
  - Performance Based Planning and Programming
  - Opportunity for public comment...and more



# TPB's Policy Framework

**Think Regionally, Act Locally:** *Local decision-making process to consider regional needs.*

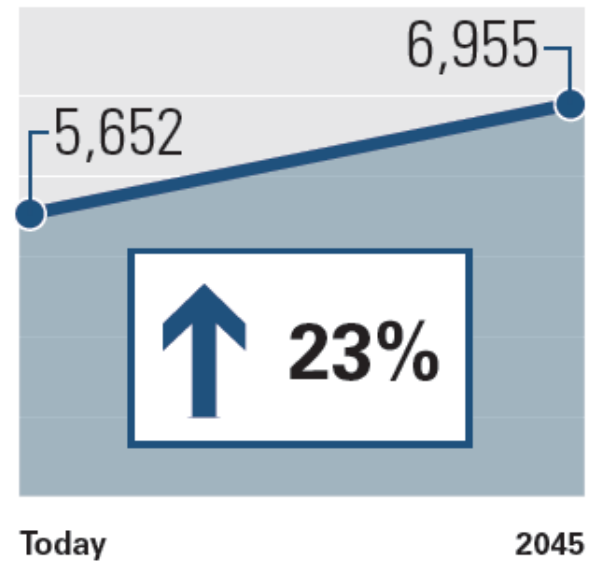
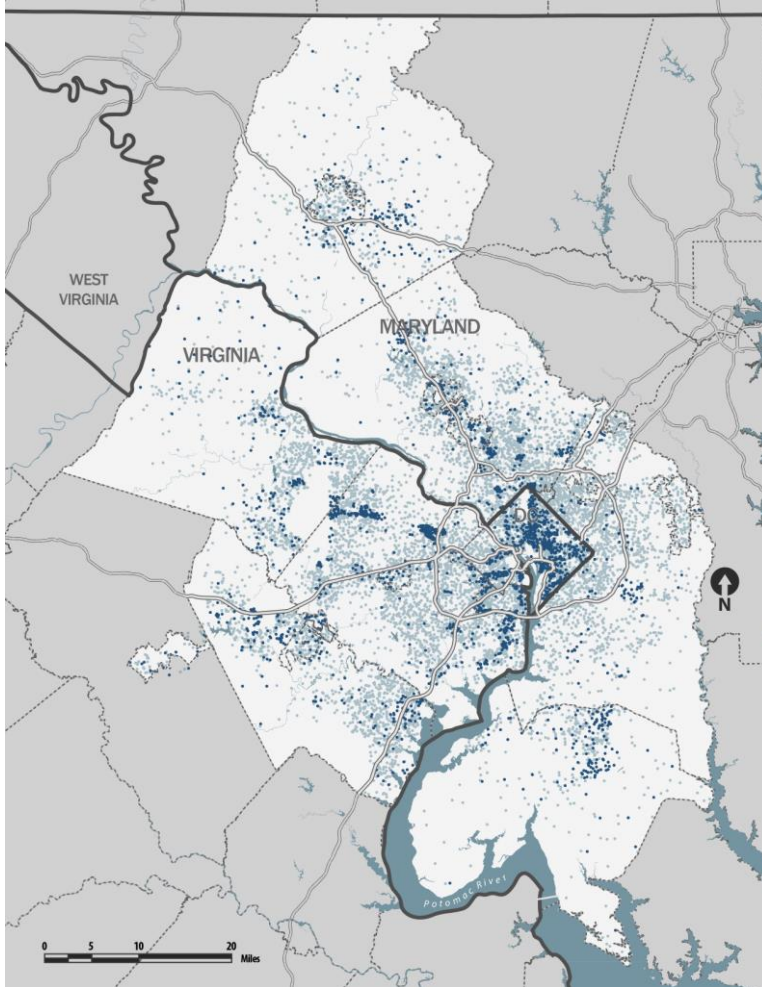


# Planning Policy Focus Area Universe

Accessibility	Affordability	Air Quality Conformity	Comprehensive Multimodal System
Connectivity	Economy	Emerging Mobility and Tech	Environment / Resiliency/ Sustainability
Equity	Land Use	Mobility	Operational Efficiency
Public Health	Reliability	Safety	State of Good Repair



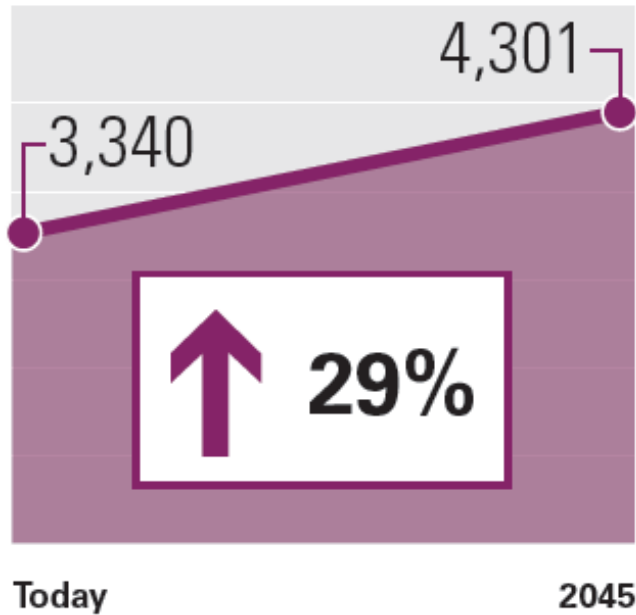
# Population Growth



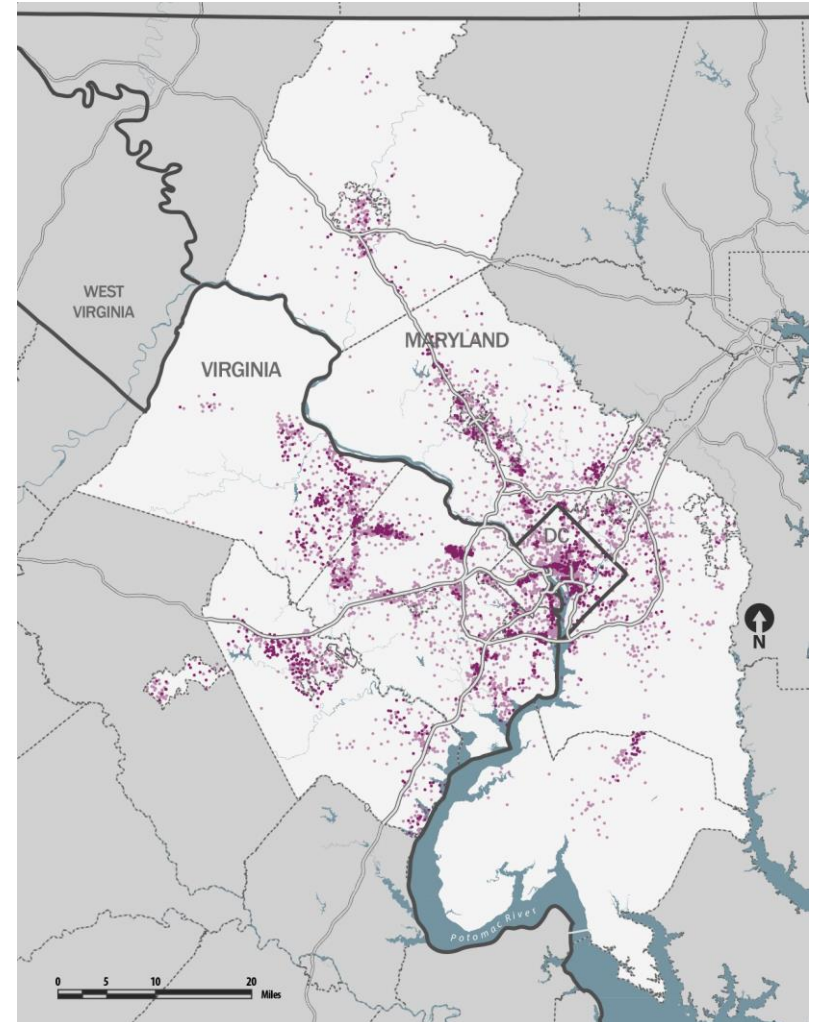
Source: Visualize 2045 LRTP, approved 2018



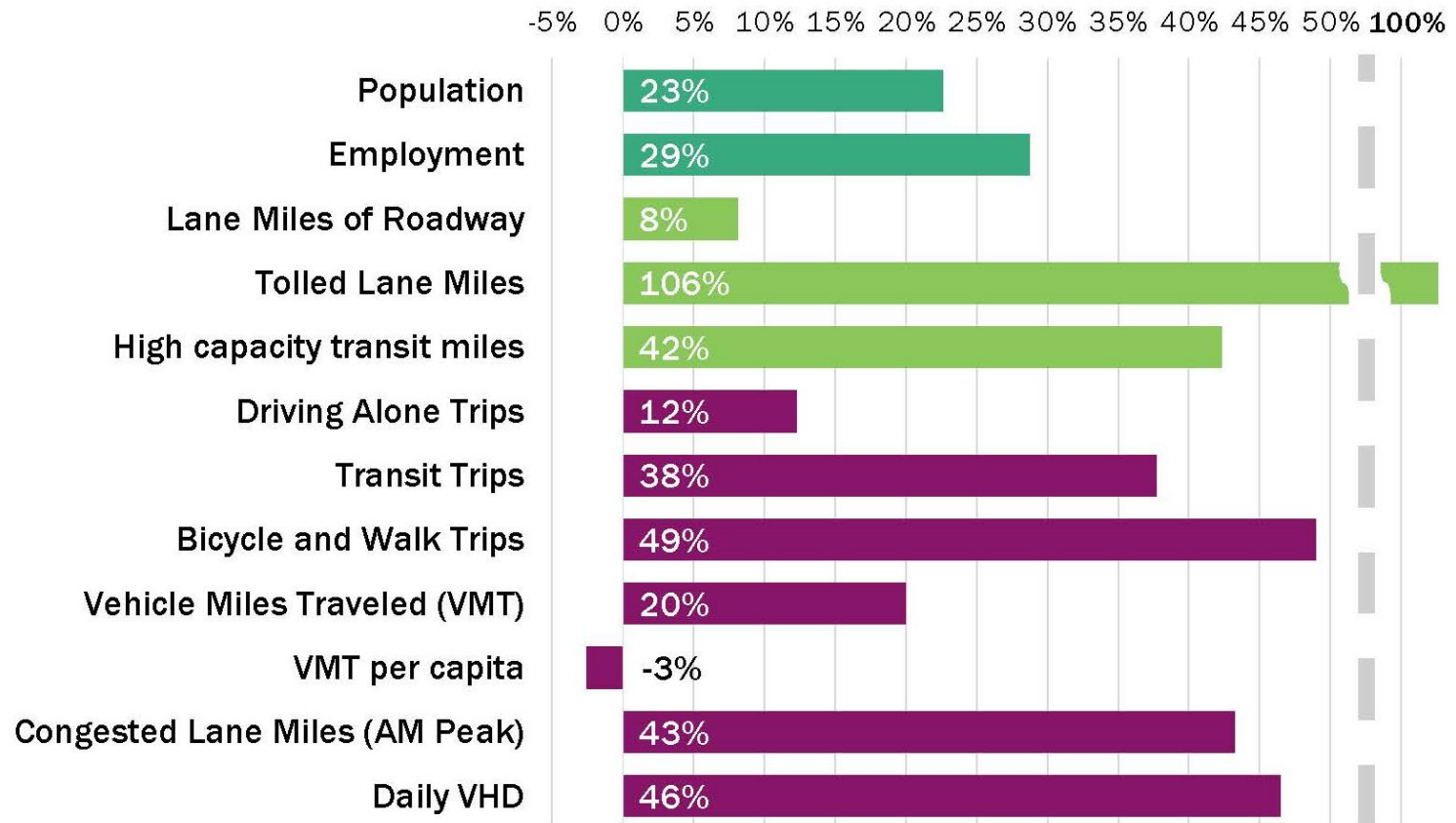
# Employment Growth



Source: Visualize 2045 LRTP, approved 2018



# Performance Overview, % Change 2019 – 2045 Build



# Two Parts of Visualize 2045

## Plan's Constrained element

- Projects from approved local plans
- Projects are vetted through local planning processes
- Constrained

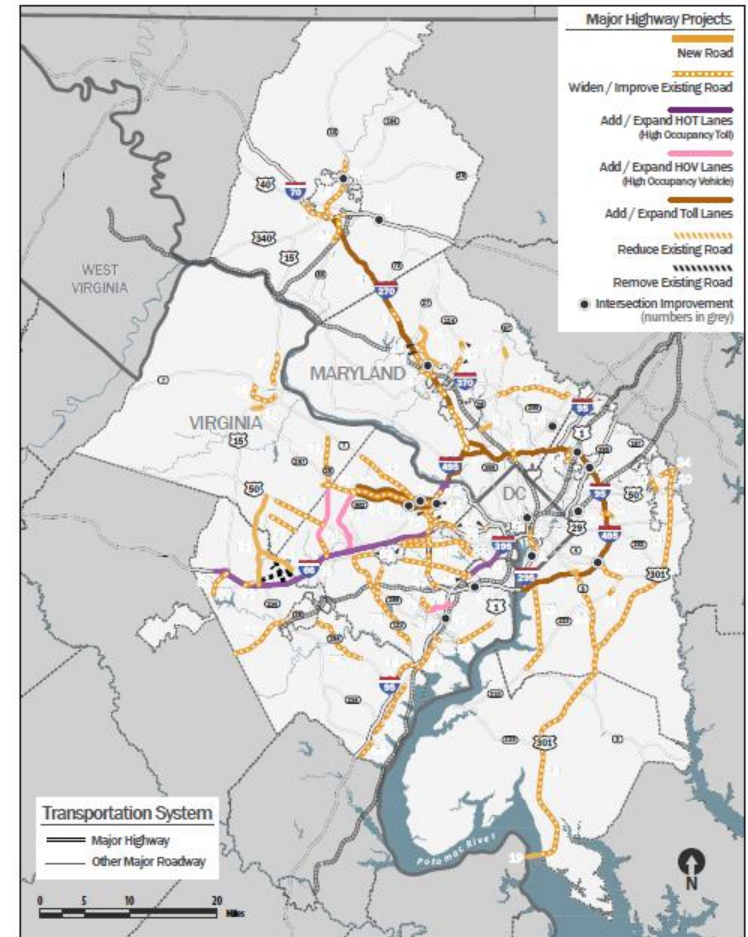
## Rest of the Plan

- Vision and Goals
- Reflects Where We are Today
- Factors we must Consider when Planning for the Future
- Strategies for a Better Future (and more)

# Financially Constrained Element

- Includes more than **100 major projects** that expand or change the region's highway or transit system capacity (see map, right)
- More than **400 projects in total**
- See Appendix B: Summary of Projects in the Financially Constrained Element for more details

Source: Visualize 2045 LRTP, approved 2018





# What are some Constraints?

- **Federal Requirements**

- Fiscal constraint: expected revenues must cover project list
- Projects included through about a 20- year (minimum) horizon 2045

- **Air Quality Conformity Analysis**

- Certain project types required – those that impact capacity

- **Funding Availability and Silos**

- Much of fed/state project funding is dedicated to specific uses, allocated through formulas
- About 80% of funding goes to maintenance

# TPB's Aspirational Initiatives

## Why?

- The previous long-range transportation plan was not anticipated to provide satisfactory future performance nor move us close enough to our regional goals

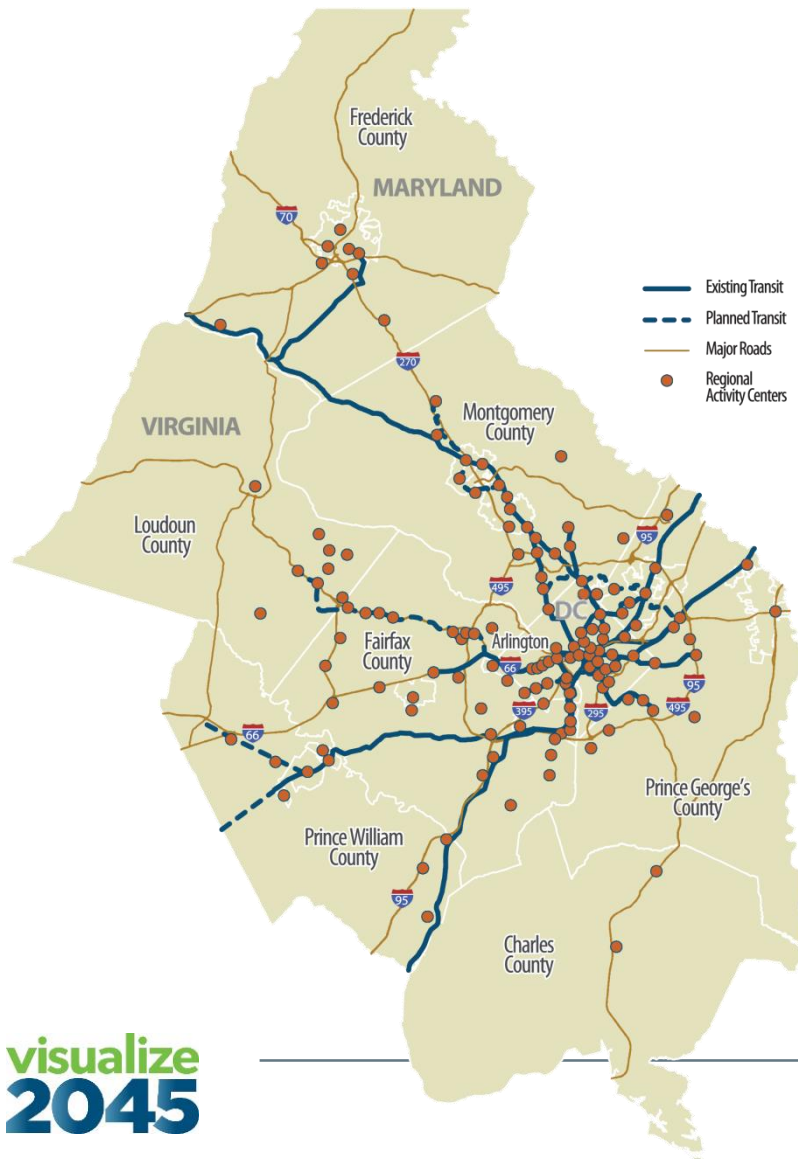
## Why these 7 initiatives?

- TPB Consensus - Top performing, Regional, Multimodal, and Multidiscipline
- Two-year systematic examination of local jurisdictions' plans
- Selected from 100+ ideas and an analysis of 10 “bundled” initiatives
- Includes mutually supportive projects, programs and policy strategies
- Informed by findings from many past scenario studies
- Addresses identified challenges to achieving transportation goals

# TPB's Aspirational Initiatives

- Bring jobs & housing closer together
- Expand BRT & transitways
- Move more people on Metrorail
- Provide more telecommuting & other commuting options
- Expand the express highway network
- Improve walk & bike access to transit
- National Capital Trail Network

# Bring Jobs & Housing Closer Together



- Job/housing balance in each Activity Center
- Housing options for different populations:
  - Affordable
  - Attractive
- Support development on the eastern side of the region
- Tailored to each place's unique identity – *not* one-size-fits-all!



# Expand BRT & Transitways

## Bus Rapid Transit:

- Advantages: Extensive, quick, less money
- Possible on arterial roads or on limited-access highways

## Street-level transit, like light-rail:

- Opportunities for economic development and fast, efficient service





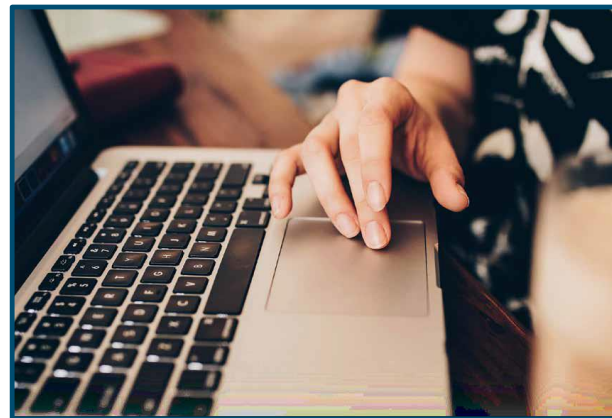
# Move More People on Metrorail

- Core capacity on the existing system
  - 8-car trains
  - Core station improvements
  - 2<sup>nd</sup> Rosslyn station
- New inner loop – Connecting Rosslyn to Georgetown, via a tunnel, and on to Union Station

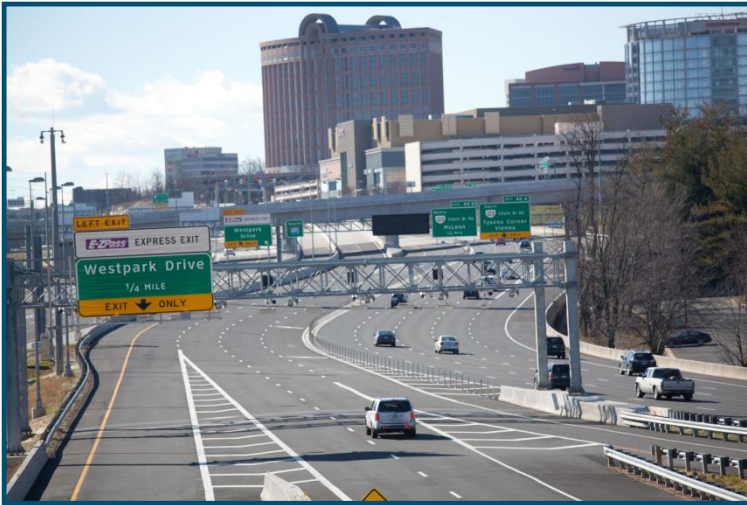


# Telecommuting & Other Commuting Options

- Expand programs to support telework, carpooling, transit use, & biking/walking
- Reduce parking benefits



# Expand Express Toll Lanes



Twin purpose:

- Manage Congestion
- Raise Revenue

Pricing should be considered:

- Particularly for new capacity
- On existing capacity when feasible

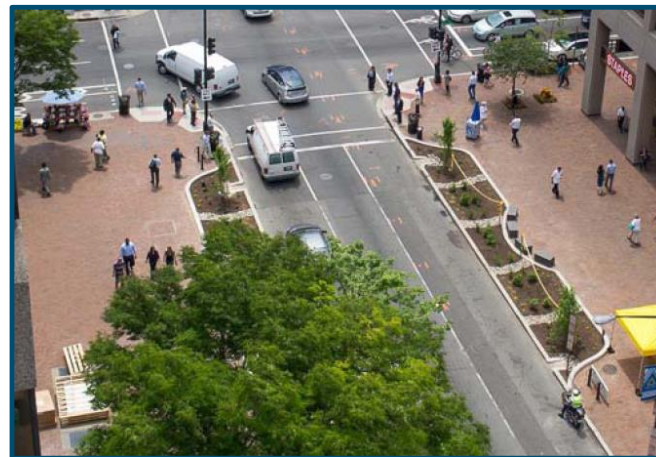
Essential:

- Provide high-quality transit, particularly BRT



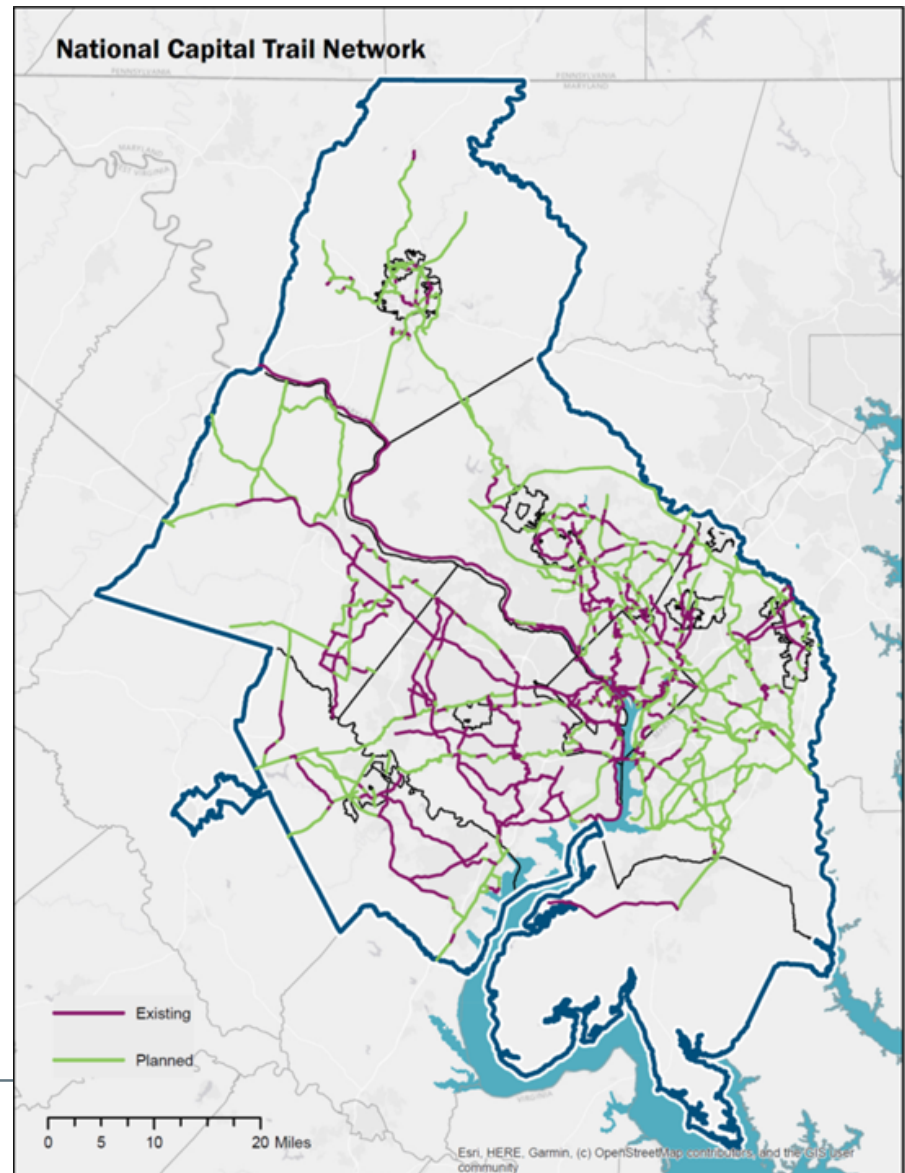
# Improve Walk & Bike Access to Transit

Increase access to transit stations through improved first- and last-mile connections on foot or by bike



# Complete the National Capital Trail Network

- Long-distance, continuous network of low-stress, mostly off-road bicycle and pedestrian facilities
- 1400 miles of facilities (645 miles already exist)



# Aspirational Initiatives - Implementation

- Bring Jobs and Housing Closer Together
- Improve Walk and Bike Access to Transit
- Complete the National Capital Trail
- Provide More Telecommuting and...



Implemented mostly  
**outside** of the  
Visualize 2045  
constrained element

- Other Options for Commuting
- Move More People on Metrorail
- Expand Express Highway Network
- Expand Bus Rapid Transit and Transitways Regionwide



Implemented mostly  
**within** the  
Visualize 2045  
constrained element

# visualize 2045

**A long-range transportation plan  
for the National Capital Region**

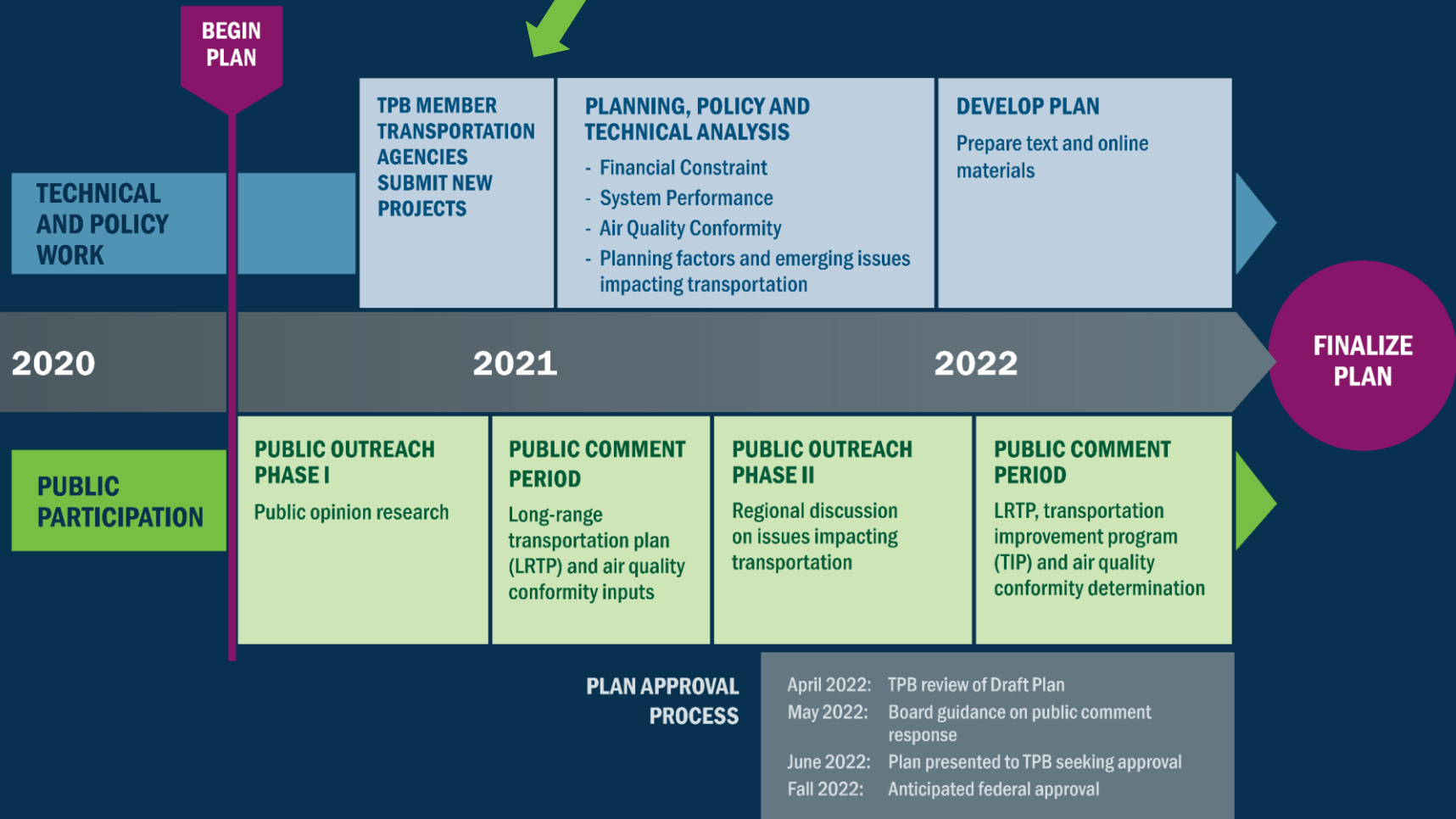




**TPB's Visualize 2045 Long-Range  
Transportation Plan Update (2022)**



**We are here**



# Planning in Times of Uncertainty

- The future is never certain – but in the last few years there have been new global forces
  - Global economy
  - Climate change
  - New technologies
  - Increased urbanization
  
- And now...a global pandemic



Where will the people and jobs be?  
How will people travel?  
What funding will we have to invest  
in and maintain the system?

# Public Opinion Research

- Closed survey
  - Statistically significant for member counties, D.C. and the City Alexandria
  - Conducted fall 2020; more than 2,400 responses
- Topics covered:
  - Covid-19 impacts on transportation preferences
  - Projects that support the TPB policy framework & Aspirational Initiatives
  - Planning Factors and Emerging Issues
- 2021 focus groups



(TPB)

# Examples of Staff Activities

- Connected and Automated Vehicles coordination
- Climate Change Mitigation and Resiliency
- Analysis to further examine issues related to transportation and equity
- Performance measure review and update to better align with TPB policy framework
- Federal Performance Based Planning and Programming (PBPP) requirements including federal Planning Factors



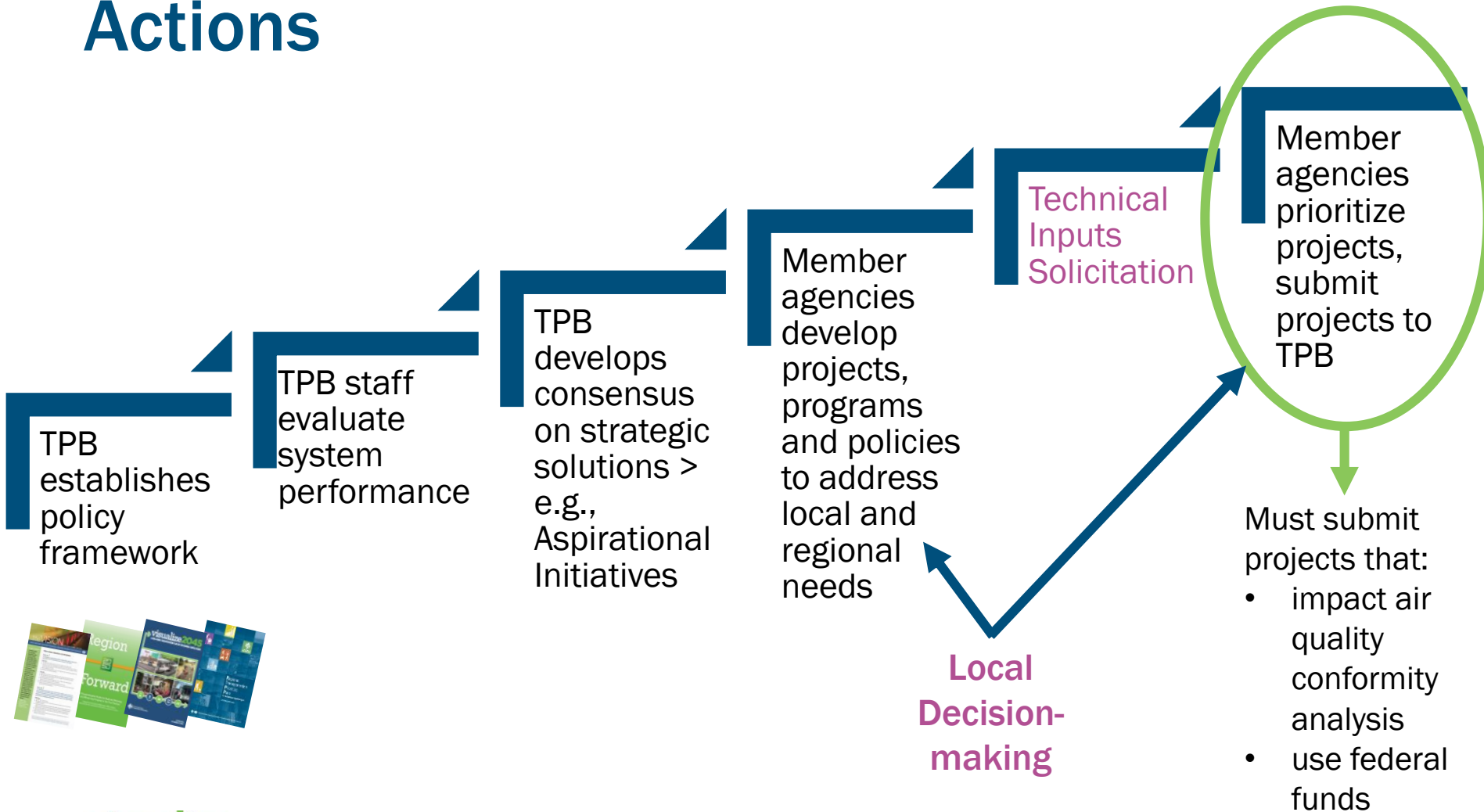
[\(Custis, Flickr\)](#)



[\(VDOT\)](#)



# Visualize 2045: a Regional Vision, Local Actions



# Comment Period on Technical Inputs for the Air Quality Conformity Analysis: April 2-May 3, 2021

- **Visualize 2045 Update – Comment Period Materials – Packet includes:**
  - Memorandum with overview
    - Background
    - Summary of existing highway, transit and HOV major projects
    - Maps
  - Federal and Regional Goals/Initiatives Matrixes
  - Major Project Profiles (for new Major Projects and ones already in the plan with significant changes)
  - Project Description Sheets – new/changed projects
  - Air Quality Conformity Table and Scope of Work



# Comment Period

There are four ways to comment The comment period closes at midnight on Monday, May 3, 2021.

- Write: to TPB's Board Chair at COG's address
- Telephone: Call (202) 962-3262 to leave a 3-minute voice mail
- Email: [TPBComment@mwcog.org](mailto:TPBComment@mwcog.org) subject line: Visualize 2045 2021 Public Comment
- Visit the [TPB Comment Page](#) to enter your comment on the Visualize 2045 update conformity projects comment form



# Open Public Outreach

- Aspirational Initiatives and Regional Priorities focused
- Continuing the work of the public opinion survey and focus groups
- Meeting people where they are and addressing the digital gap

# Learn and Share about Visualize 2045



Infographics – you can print, post on websites  
Animated Videos – for social media tools

## Stacy M. Cook

Transportation Planner

(202) 962-3335

[scook@mwkog.org](mailto:scook@mwkog.org)

## Karen Armendariz

Transportation Planner

(202) 962-3335

[scook@mwkog.org](mailto:scook@mwkog.org)

**[mwkog.org/TPB](http://mwkog.org/TPB)**

Metropolitan Washington  
Council of Governments

777 North Capitol Street NE,  
Suite 300

Washington, DC 20002