

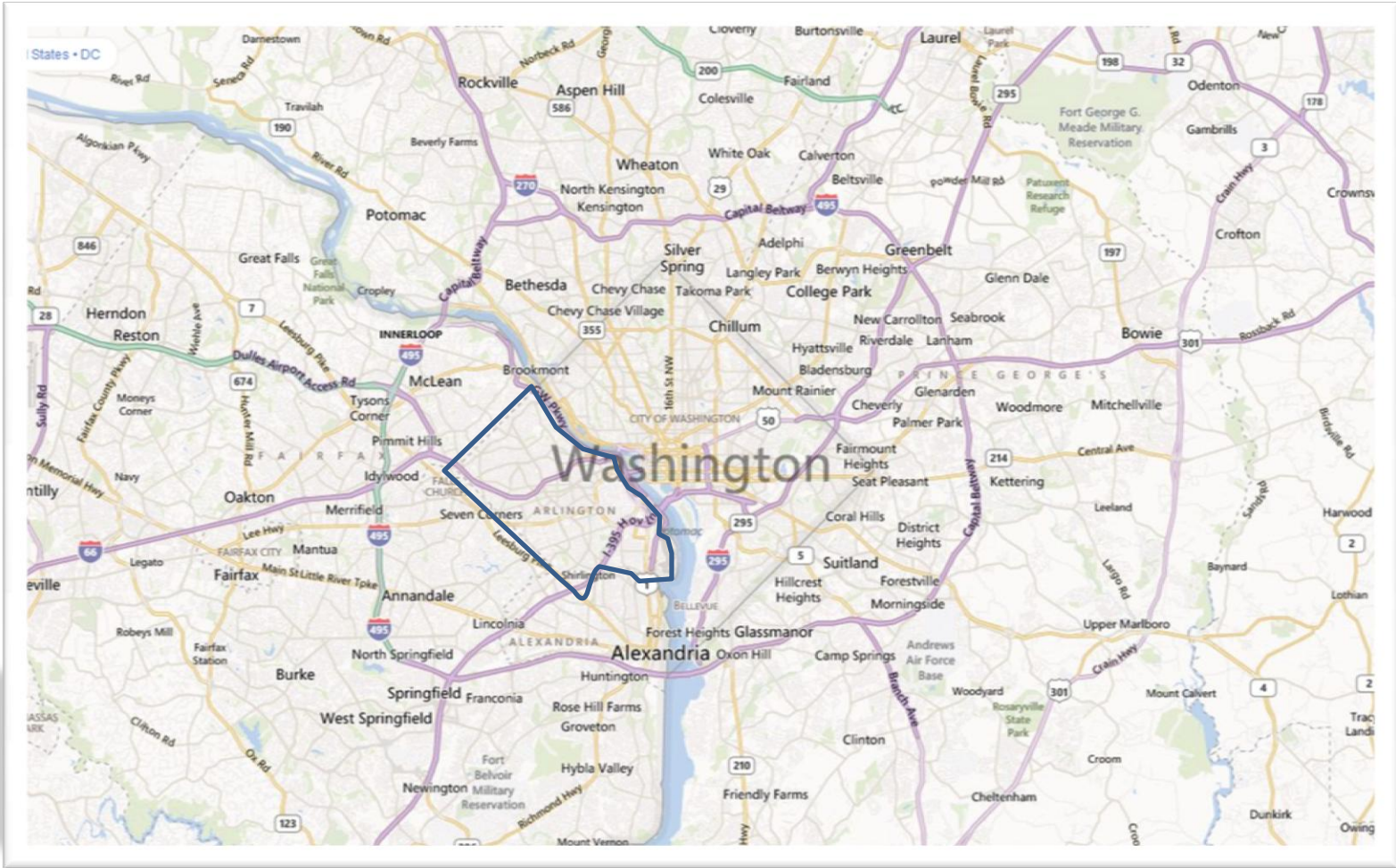
An overview of Arlington County's bicycle and pedestrian counting program

September 17, 2013

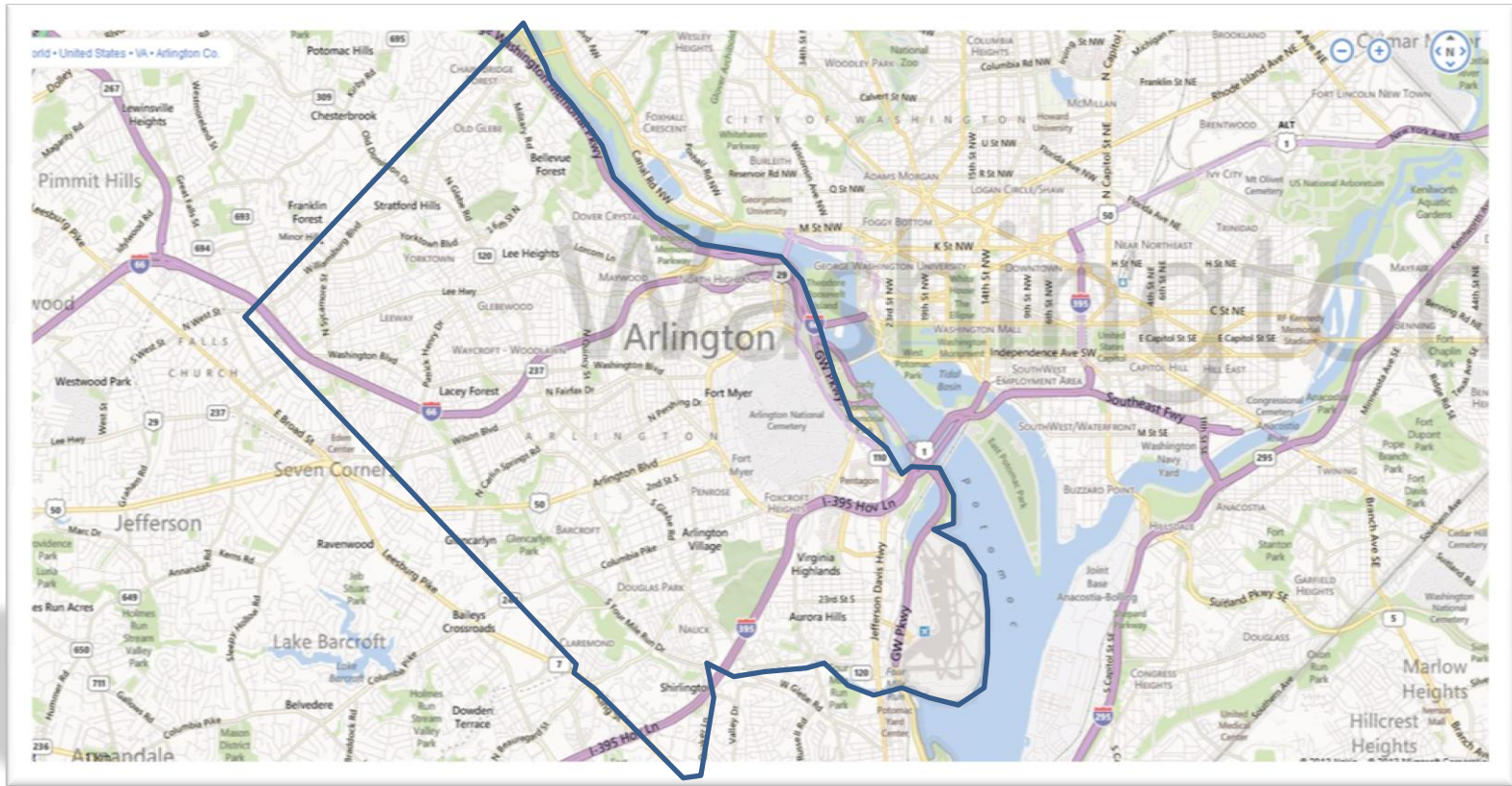
David Patton,
Bicycle and Pedestrian Transportation Planner
Arlington County, Virginia



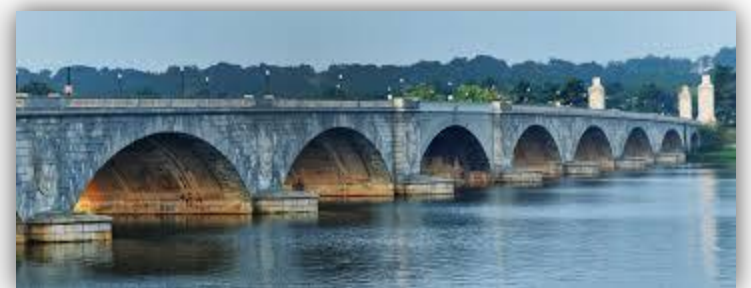
DEPARTMENT OF
ENVIRONMENTAL SERVICES



Arlington County in the Greater Washington DC Metro Area



Originally part of the “ten miles square” of the federal district,
retroceded to Virginia in 1846

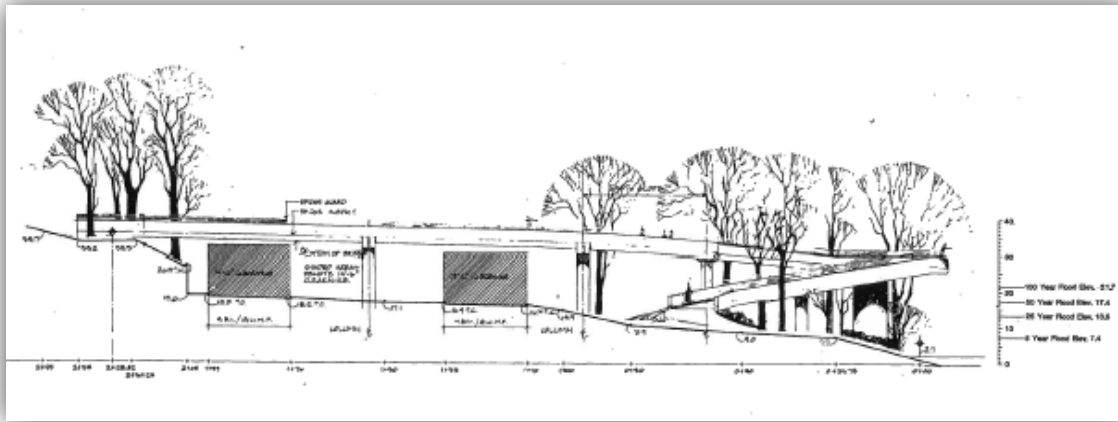


R-B CORRIDOR 1970



R-B CORRIDOR TODAY





Locally built on federal land (NPS) –
 \$1.4 M in local funds (1988)



METROPOLITAN
AND
CITY OF LONDON
POLICE

CENSUS OF TRAFFIC

LONDON:
Printed by the Receiver for the Metropolitan Police District,
New Bedford Yard, Westminster, S.W. 1.

TABLE I.

TRAFFIC

| Serial No. | Point of enumeration. | CLASS OF VEHICLE. | | | | | Serial No. |
|------------|--|--|-------------------|------------|---------|--|------------|
| | | Locomotive and Traction Engines | Heavy Motor Cars. | | | | |
| | | | Commercial | Omni-buses | Couches | | |
| 1 | Hyde Park Corner (see Note b) | 160 | 8774 | 8500 | 983 | | |
| 2 | Trafalgar Square (see Note b) | 85 | 4316 | 9432 | 946 | | |
| 3 | Marble Arch (see Note b) | 170 | 5586 | 7707 | 424 | | |
| 4 | Piccadilly Circus (see Note b) | 18 | 2278 | 8227 | 971 | | |
| 5 | Edgware Road, junctions with Princes Street and Marylebone Road | 140 | 6735 | 5825 | 591 | | |
| 6 | Piccadilly, junction with St. James's Street | 9 | 1785 | 4373 | 596 | | |
| 7 | Blackfriars Bridge Approach (Chatham Place) | 73 | 5802 | 1322 | 437 | | |
| 8 | Grosvenor Gardens (see Note b) | 84 | 2193 | 6416 | 341 | | |
| 9 | Oxford Circus | 14 | 850 | 9850 | 1301 | | |
| 10 | Shepherd's Bush Green | 129 | 6783 | 2510 | 423 | | |
| 11 | Strand, junction with Wellington Street | 45 | 2901 | 8997 | 351 | | |
| 12 | Mansion House | 56 | 2553 | 8174 | 252 | | |
| 13 | Lodge Circus | 91 | 4591 | 4566 | 97 | | |
| 14 | High Holborn, junction with Southampton Row | 30 | 3273 | 4582 | 228 | | |
| 15 | Esplanade, junction with Southampton Row | 163 | 3283 | 3703 | 963 | | |
| 16 | Knightsbridge, junction with Sloane Street | 4 | 1494 | 4562 | 644 | | |
| 17 | St. Giles' Circus | 89 | 2486 | 7622 | 63 | | |
| 18 | Elephant and Castle | 85 | 5484 | 5018 | 282 | | |
| 19 | Vauxhall Cross | 213 | 7599 | 2310 | 491 | | |
| 20 | Monument | 118 | 4357 | 4853 | 286 | | |
| 21 | Swiss Cottage | 5 | 2255 | 1841 | 237 | | |
| 22 | Queen Victoria Street, junction with Cannon Street | 33 | 2598 | 4693 | 391 | | |
| 23 | Kennington High Street, junction with Church Street | 10 | 2598 | 4302 | 611 | | |
| 24 | King's Cross (Euston Road from junction with Pancras Road to junction with Pentonville Road) | 91 | 6602 | 3765 | 303 | | |
| 25 | Victoria Street, junction with Vauxhall Bridge Road | 131 | 3963 | 6141 | 222 | | |
| 26 | Whitechapel High Street (Gardiner's Corner) | 223 | 6997 | 3377 | 732 | | |
| 27 | Notting Hill Gate (High Street from junction with Church Street to junction with Pembroke Gardens) | 27 | 1348 | 3442 | 439 | | |
| 28 | Euston Road, St. Pancras Church | 63 | 2154 | 3694 | 359 | | |

CENSUS, 1933.

| Motor Class. (See Note a) | CLASS OF VEHICLE. | | | | | | | Total. | Serial No. |
|------------------------------------|----------------------|---------------------|----------------------------------|----------------------------------|-----------------|--------|----------|--------|------------|
| | Electric Traction | Trolley Vehicles | Light Horse-drawn Vehicles | Heavy Horse-drawn Vehicles | Bicycles. | | Barrows. | | |
| | | | | | Motor (solo) | Pedal. | | | |
| 53550 | — | — | 653 | 529 | 921 | 7870 | 118 | 81857 | 1 |
| 42235 | — | — | 454 | 384 | 474 | 6276 | 163 | 64735 | 2 |
| 31004 | — | — | 444 | 307 | 664 | 5787 | 104 | 52197 | 3 |
| 33587 | — | — | 324 | 223 | 209 | 4657 | 166 | 51160 | 4 |
| 21302 | — | — | 744 | 600 | 850 | 7725 | 385 | 45028 | 5 |
| 31349 | — | — | 883 | 104 | 186 | 3817 | 129 | 42839 | 6 |
| 23650 | 2082 | — | 1107 | 1219 | 394 | 5377 | 277 | 41740 | 7 |
| 25295 | — | — | 291 | 164 | 246 | 4809 | 112 | 39931 | 8 |
| 20505 | — | — | 353 | 54 | 449 | 3993 | 93 | 37489 | 9 |
| 16148 | 1446 | — | 291 | 139 | 742 | 8400 | 268 | 37279 | 10 |
| 20565 | — | — | 940 | 1018 | 287 | 4544 | 675 | 37223 | 11 |
| 16302 | — | — | 703 | 636 | 223 | 6267 | 418 | 35764 | 12 |
| 16599 | — | — | 1290 | 1129 | 361 | 6031 | 618 | 35473 | 13 |
| 18293 | — | — | 708 | 1207 | 394 | 5751 | 492 | 34955 | 14 |
| 17394 | 1203 | — | 241 | 181 | 697 | 6892 | 372 | 34852 | 15 |
| 32905 | — | — | 283 | 126 | 266 | 4659 | 78 | 34411 | 16 |
| 15745 | — | — | 303 | 110 | 354 | 5540 | 267 | 32713 | 17 |
| 10221 | 3906 | — | 666 | 361 | 483 | 5615 | 327 | 32648 | 18 |
| 11485 | 2829 | — | 571 | 1011 | 448 | 5007 | 249 | 32213 | 19 |
| 14461 | — | — | 953 | 1257 | 794 | 4821 | 728 | 32126 | 20 |
| 22029 | — | — | 183 | 60 | 454 | 3599 | 103 | 30796 | 21 |
| 10911 | — | — | 119 | 522 | 207 | 3685 | 250 | 30099 | 22 |
| 10877 | — | — | 104 | 115 | 300 | 4513 | 137 | 29567 | 23 |
| 12794 | 1061 | — | 295 | 528 | 284 | 2753 | 201 | 29080 | 24 |
| 14006 | — | — | 377 | 151 | 211 | 3601 | 151 | 28973 | 25 |
| 7217 | 3270 | — | 718 | 572 | 236 | 3805 | 659 | 28120 | 26 |
| 16753 | — | — | 172 | 110 | 265 | 6090 | 145 | 27942 | 27 |
| 16713 | — | — | 893 | 381 | 417 | 3396 | 145 | 27605 | 28 |

TABLE I.

TRAFFIC

| Serial No. | Point of enumeration. | CLASS OF VEHICLE. | | | |
|------------|-------------------------------------|---------------------------|-------------------|------------|----------|
| | | Locomotives and Tractors. | Heavy Motor Cars. | | |
| | | | Commercial. | Omnibuses. | Coaches. |
| 1 | Hyde Park Corner (see Note b) | 160 | 8774 | 8500 | 982 |
| 2 | Trafalgar Square (see Note b) | 55 | 4316 | 9432 | 946 |
| 3 | Marble Arch (see Note b) | 170 | 5586 | 7707 | 484 |
| 4 | Piccadilly Circus (see Note b) | 18 | 2278 | 8227 | 971 |

CENSUS, 1933.

| Serial No. | Point of enumeration. | CLASS OF VEHICLE. | | | | | | | Serial No. | | |
|------------|-------------------------------------|--------------------------|--------------------|--------------------|-----------------------------|-----------------------------|---------------|--------|------------|--------|---|
| | | Motor Cars. (See Note a) | Electric Tractors. | Tricycle Vehicles. | Light Horse-drawn Vehicles. | Heavy Horse-drawn Vehicles. | Bicycles. | | | Total. | |
| | | | | | | | Motor (solo). | Pedal. | | | |
| 1 | Hyde Park Corner (see Note b) | 53550 | — | — | 663 | 629 | 62 | 7870 | 118 | 81867 | 1 |
| 2 | Trafalgar Square (see Note b) | 42235 | — | — | 454 | 384 | 474 | 6276 | 163 | 64735 | 2 |
| 3 | Marble Arch (see Note b) | 31004 | — | — | 444 | 307 | 664 | 5787 | 104 | 52107 | 3 |
| 4 | Piccadilly Circus (see Note b) | 33567 | — | — | 324 | 223 | 209 | 4657 | 166 | 51160 | 4 |

9.6%
Highest traffic location

| | | | | | |
|----|--|-----|-------|------|-----|
| 31 | "Angel", Islington | 74 | 3861 | 3380 | 120 |
| 32 | Blackfriars Road, junction with Stamford Street | 122 | 10137 | 1389 | 62 |
| 33 | Holborn Circus | 6 | 1939 | 3729 | 29 |
| 34 | Old Kent Road ("Bricklayer's Arms") | 105 | 8462 | 2368 | 277 |
| 35 | Shoreditch High Street, junction with Great Eastern Street | 82 | 9007 | 3374 | 268 |
| 36 | Lewisham High Road ("Marquis of Granby") | 107 | 5102 | 1840 | 412 |

| | | | | | | | | | |
|-------|------|---|------|------|-----|------|-----|-------|----|
| 10740 | 2937 | — | 308 | 254 | 284 | 4029 | 304 | 26291 | 31 |
| 5518 | 2133 | — | 1383 | 1333 | 292 | 3460 | 206 | 26107 | 32 |
| 12131 | — | — | 1360 | 776 | 228 | 5458 | 384 | 26036 | 33 |
| 8806 | 1571 | — | 508 | 1017 | 476 | 4105 | 265 | 26011 | 34 |
| 7744 | 2371 | — | 973 | 891 | 237 | 3517 | 542 | 26006 | 35 |
| 9604 | 2462 | — | 199 | 187 | 569 | 5056 | 153 | 25691 | 36 |

20.9%
"High" street

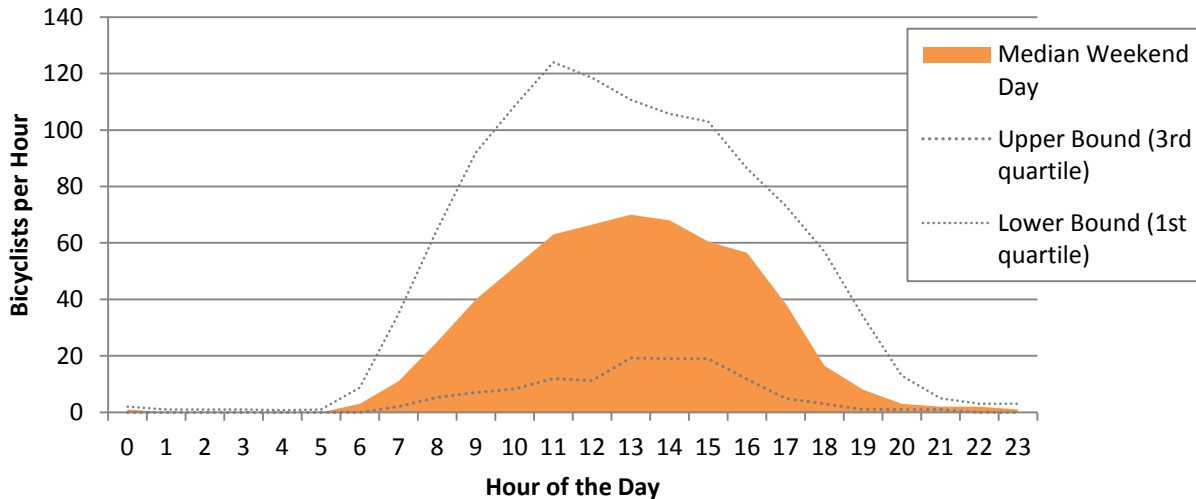
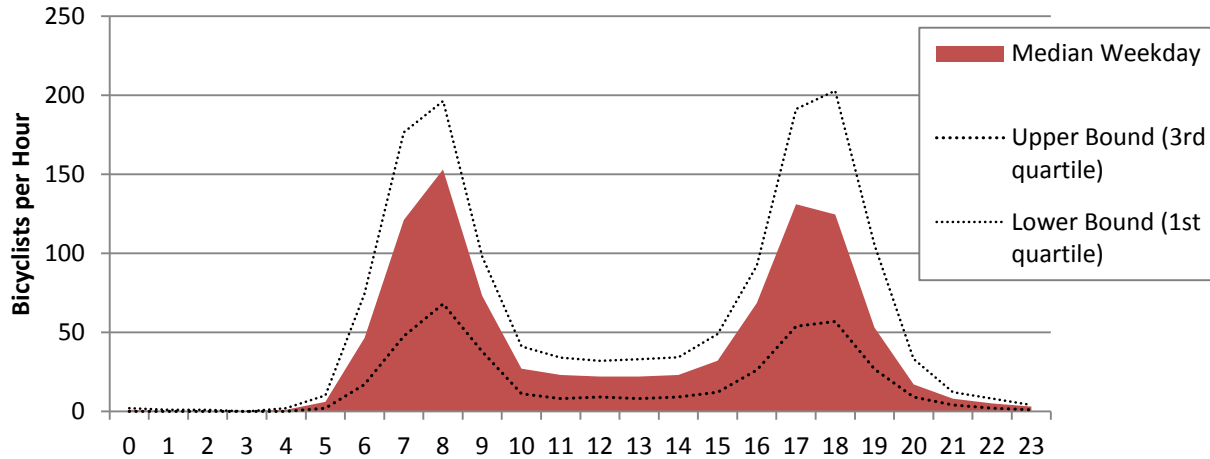
| | | | | | |
|---|--|-----|------|------|-----|
| 7 | Cornhill, junction with Bishopsgate | 17 | 1965 | 3647 | 210 |
| 8 | Moorgate, junction with London Wall | 32 | 1951 | 2387 | 24 |
| 9 | Harrow Road ("Prince of Wales") | 30 | 1858 | 2268 | 108 |
| 0 | Tooting Broadway | 62 | 3111 | 1071 | 228 |
| 1 | Walham Green Broadway | 66 | 2126 | 2540 | 45 |
| 2 | Kingston, Eden Street, junction with London Road | 39 | 2005 | 397 | 267 |
| 3 | Stamford Hill, junction with Amlurst Park | 27 | 2624 | 1260 | 98 |
| 4 | Harlesden High Street from junction with Station Road to junction with Manor Park Road | 104 | 3833 | 907 | 90 |
| 5 | Kew Bridge Road by Kew Bridge | 50 | 2551 | 822 | 138 |

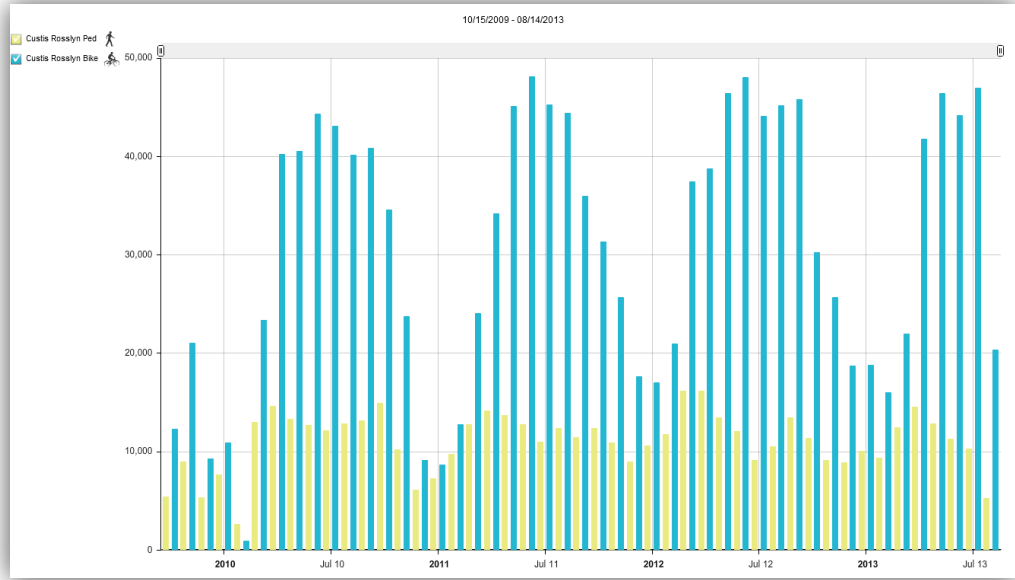
| | | | | | | | | | |
|------|------|-----|-----|-----|-----|------|-----|-------|----|
| 8151 | — | — | 440 | 457 | 259 | 4072 | 361 | 19579 | 67 |
| 9339 | — | — | 574 | 397 | 119 | 2965 | 406 | 18194 | 68 |
| 7878 | 491 | — | 201 | 156 | 340 | 4610 | 253 | 18193 | 69 |
| 5226 | 1920 | — | 153 | 72 | 300 | 5692 | 192 | 17026 | 70 |
| 5655 | — | — | 197 | 136 | 270 | 6278 | 208 | 17521 | 71 |
| 8631 | — | 841 | 73 | 62 | 564 | 4396 | 82 | 17357 | 72 |
| 7257 | 911 | — | 162 | 62 | 328 | 3980 | 107 | 16816 | 73 |
| 4380 | 1217 | — | 188 | 47 | 363 | 5343 | 204 | 16676 | 74 |
| 7228 | 613 | — | 242 | 82 | 489 | 4311 | 107 | 16633 | 75 |

35.8%
Urban village



Weekday and Weekend profiles (year-round)

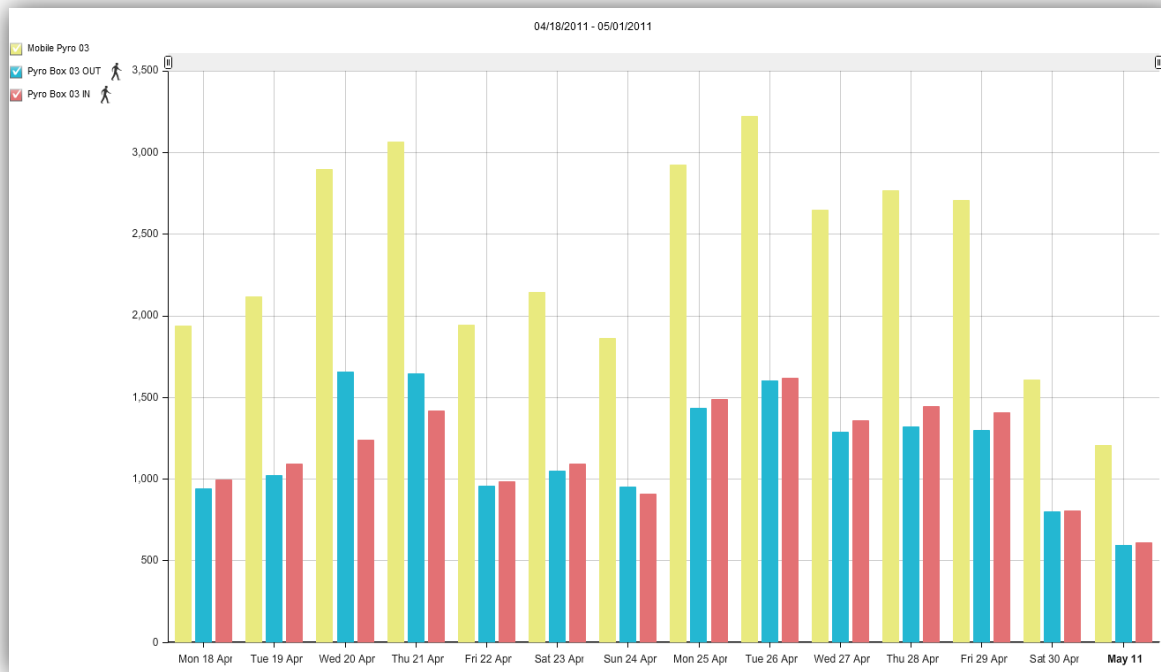


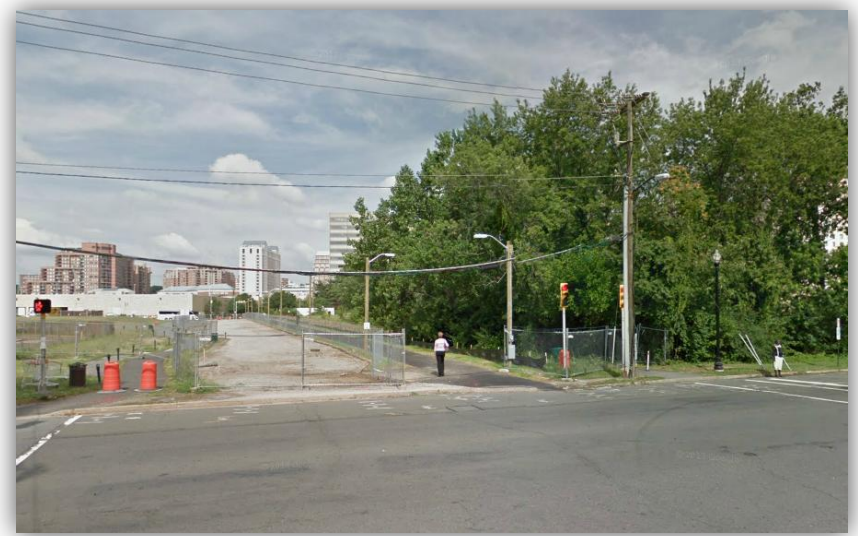
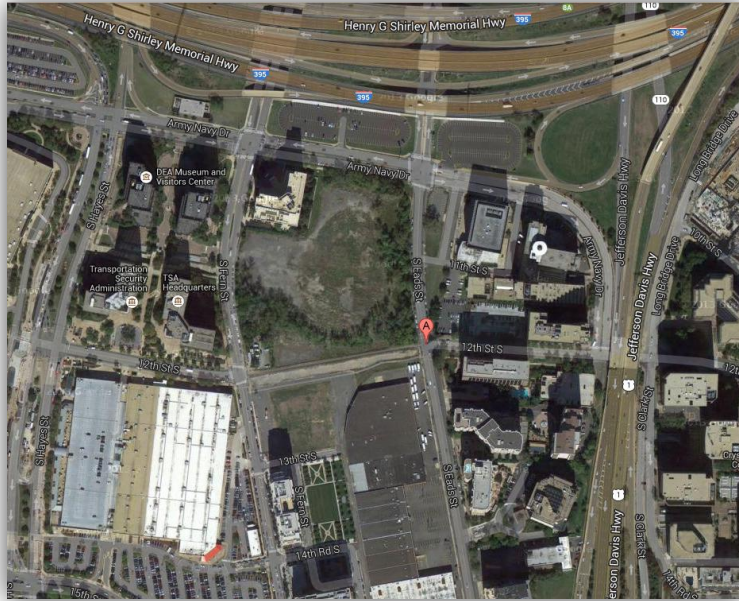


| Date | Custis Rosslyn TOTAL | Year over year | Custis Rosslyn Ped | Year over year | Custis Rosslyn Bike | Year over year |
|------|-------------------------|-------------------|-----------------------|-------------------|------------------------|-------------------|
| 2010 | 485023 | | 133255 | | 351768 | |
| 2011 | 510428 | + 5.24% | 137319 | + 3.05% | 373086 | + 6.06% |
| 2012 | 560842 | + 9.88% | 142675 | + 3.90% | 418167 | + 12.08% |

| Date | Custis Rosslyn TOTAL | Custis Rosslyn Ped | Custis Rosslyn Bike |
|---------------|-------------------------|-----------------------|------------------------|
| January 2012 | 27542 | 10570 | 16972 |
| February 2012 | 32712 | 11745 | 20967 |
| March 2012 | 53605 | 16139 | 37466 |
| April 2012 | 54904 | 16171 | 38733 |
| May 2012 | 59860 | 13470 | 46390 |
| June 2012 | 60122 | 12087 | 48035 |
| | 288745 | 80182 | 208563 |

| Date | Custis Rosslyn TOTAL | Custis Rosslyn Ped | Custis Rosslyn Bike |
|-------------------|-------------------------|-----------------------|------------------------|
| January 2013 | 28798 | 10022 | 18776 |
| February 2013 | 25365 | 9373 | 15992 |
| March 2013 | 34446 | 12447 | 21999 |
| April 2013 | 56356 | 14567 | 41789 |
| May 2013 | 59229 | 12847 | 46382 |
| June 2013 | 55417 | 11251 | 44166 |
| | 259611 | 70507 | 189104 |
| Year over Year | -10.09% | -12.07% | -9.33% |

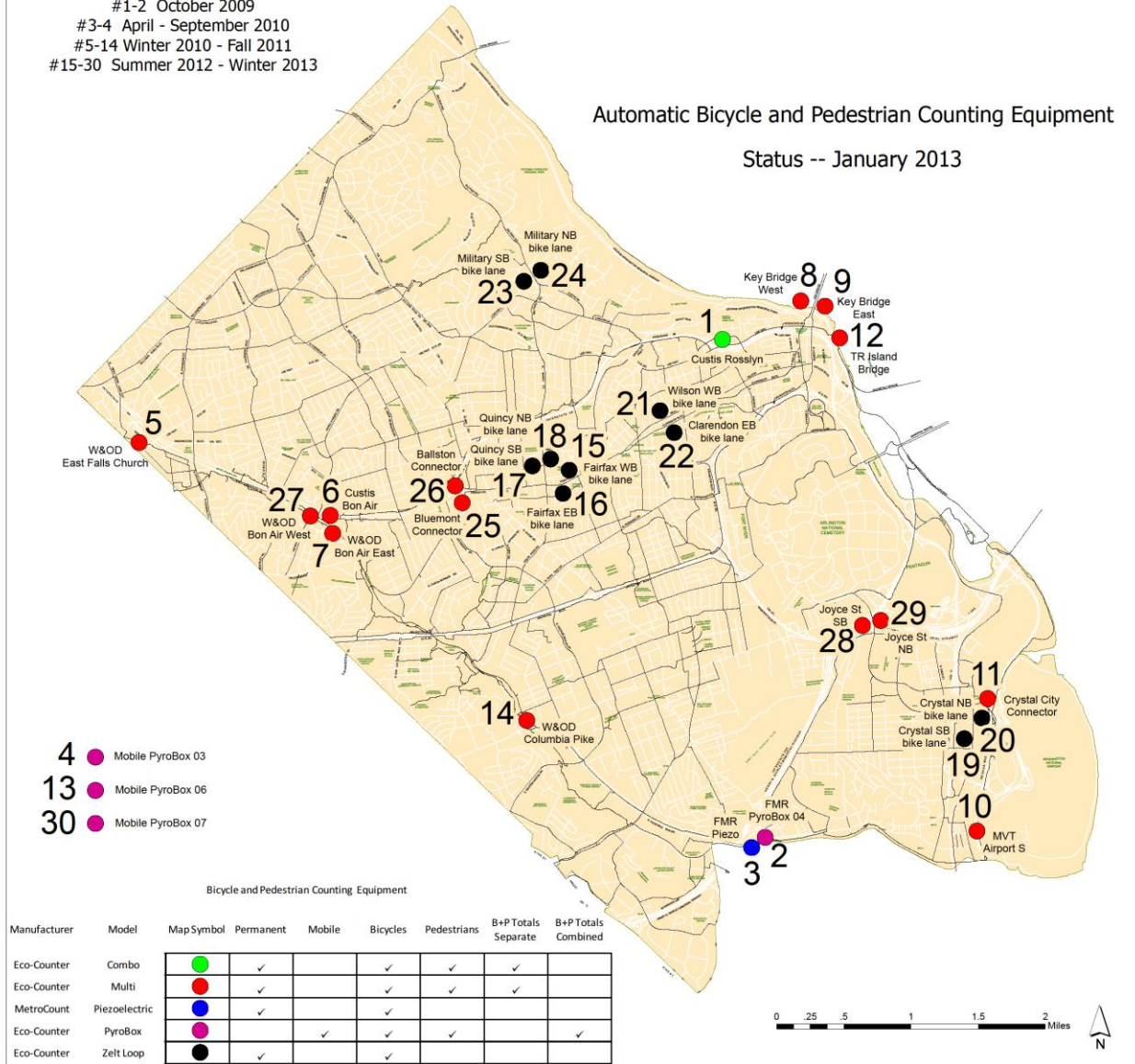




Special study for major commercial site undergoing development:
3,000 + pedestrians per day using
undeveloped corridor near Metro, housing, shopping, Pentagon

Installation dates:
 #1-2 October 2009
 #3-4 April - September 2010
 #5-14 Winter 2010 - Fall 2011
 #15-30 Summer 2012 - Winter 2013

Automatic Bicycle and Pedestrian Counting Equipment Status -- January 2013





New to Biking?

Bike Classes

PAL: Safety on Our Streets

News, Events & Blog

Capital Bikeshare

Maps & Rides

Biking in Arlington

About



Welcome to BikeArlington

Arlington, Virginia is [a great place to get around by bicycle](#). More than one hundred miles of [multi-use trails](#), on-street bike lanes, and designated bike routes make it easy for cyclists to get where they need to go. If you don't have a bike, or don't have it with you, [Capital Bikeshare](#) is a convenient option. BikeArlington's goal is to get more Arlingtonians biking more often, whether they're commuting, shopping, or just having fun.

Zen Around the City: Ladies Bike Night

Ladies – mark your calendars! On September 4th, we are hosting our very first women's only event: ["Zen Around the City"](#)! If you're a beginner then this event is for you! We'll show you how incorporating biking into your life can help improve your quality of life. With experts on hand to tailor the information to your unique needs, you'll be one step closer to a happier, healthier and more "zenful" life! So join us for a night of yoga, biking and fun! Tickets are \$5 and include dinner and a goodie bag worth \$25. Visit the [event website](#) to RSVP.

Date: Wednesday, September 4th

Time: 7pm – 9pm

Location: Mind Your Body Oasis, 1750 Crystal Drive, Arlington, VA



Upcoming Events

- [Revolve Ride for Rock Recovery](#)
Saturday, August 17, 2013
- [Anthem Moonlight Ride](#)
Saturday, August 17, 2013
- [Two Wheel Tuesdays - Courthouse](#)
Tuesday, September 3, 2013 5:00pm - 6:30pm

[Events Calendar](#)

Recent Blog Posts

- [New Video from Arlington TV: Bikeshare and Biking in Arlington](#)
July 29, 2013
- [The Art of Purchasing a Bike](#)
July 12, 2013
- [Crystal City 4th of July Fireworks Bike/Ped Analysis](#)
July 9, 2013

[BikeArlington Blog](#)

Latest Forum Threads

- [VTV Gran Fondo](#)
Thursday, August 15, 2013
- [Stickers/decals on your bike](#)
Thursday, August 15, 2013
- [Camelback Podium Chill](#)
Thursday, August 15, 2013

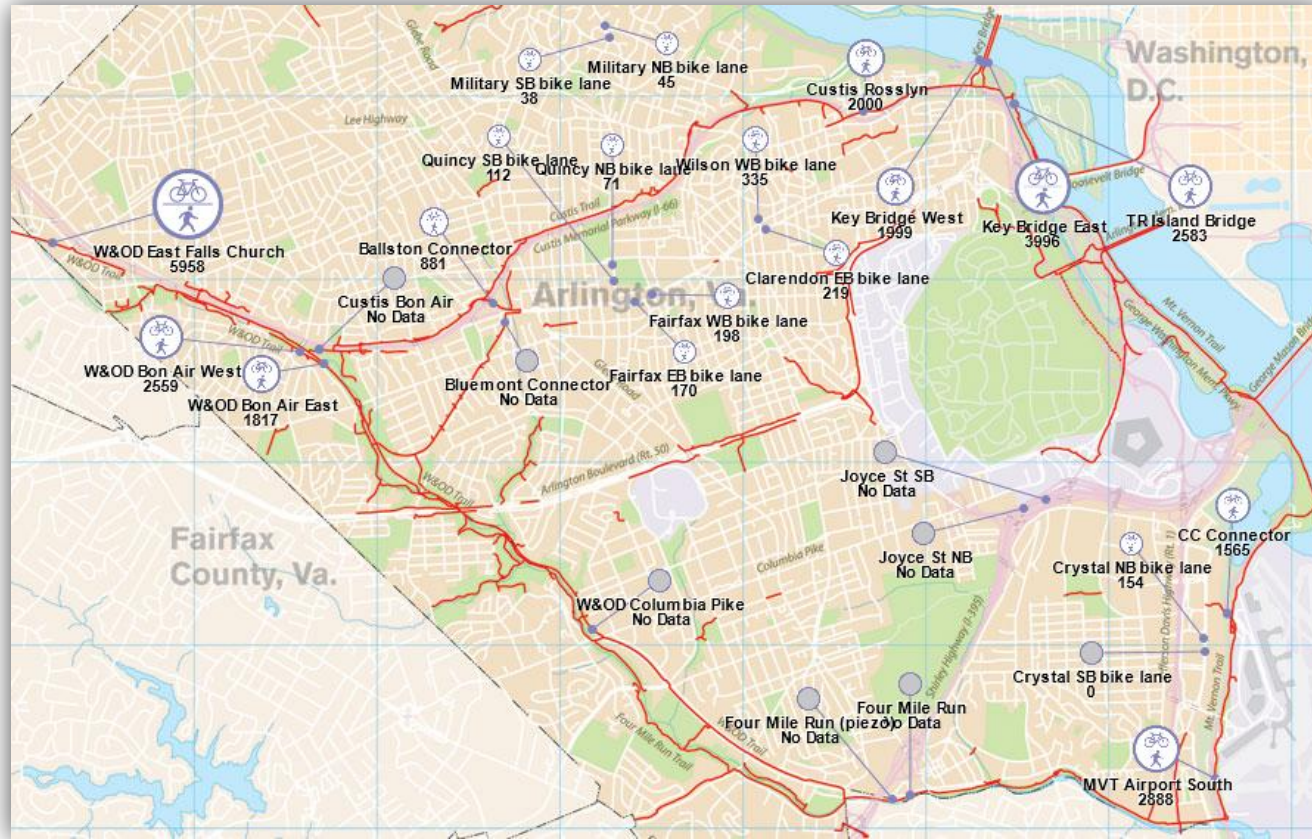
[Forum](#)

Recent Tweets

- [BikeArlington: @kateshirley @vkandersdc http://t.co/roUknZUvVxi](#)
August 15, 2013, 10:32 AM
- [BikeArlington: @vkandersdc @kateshirley Nah, 'Cat6 racing' is everyday, all day. People hate getting passed by a guy with flip-flops and a rear baby seat.](#)
August 15, 2013, 10:26 AM

[Follow Us on Twitter](#)

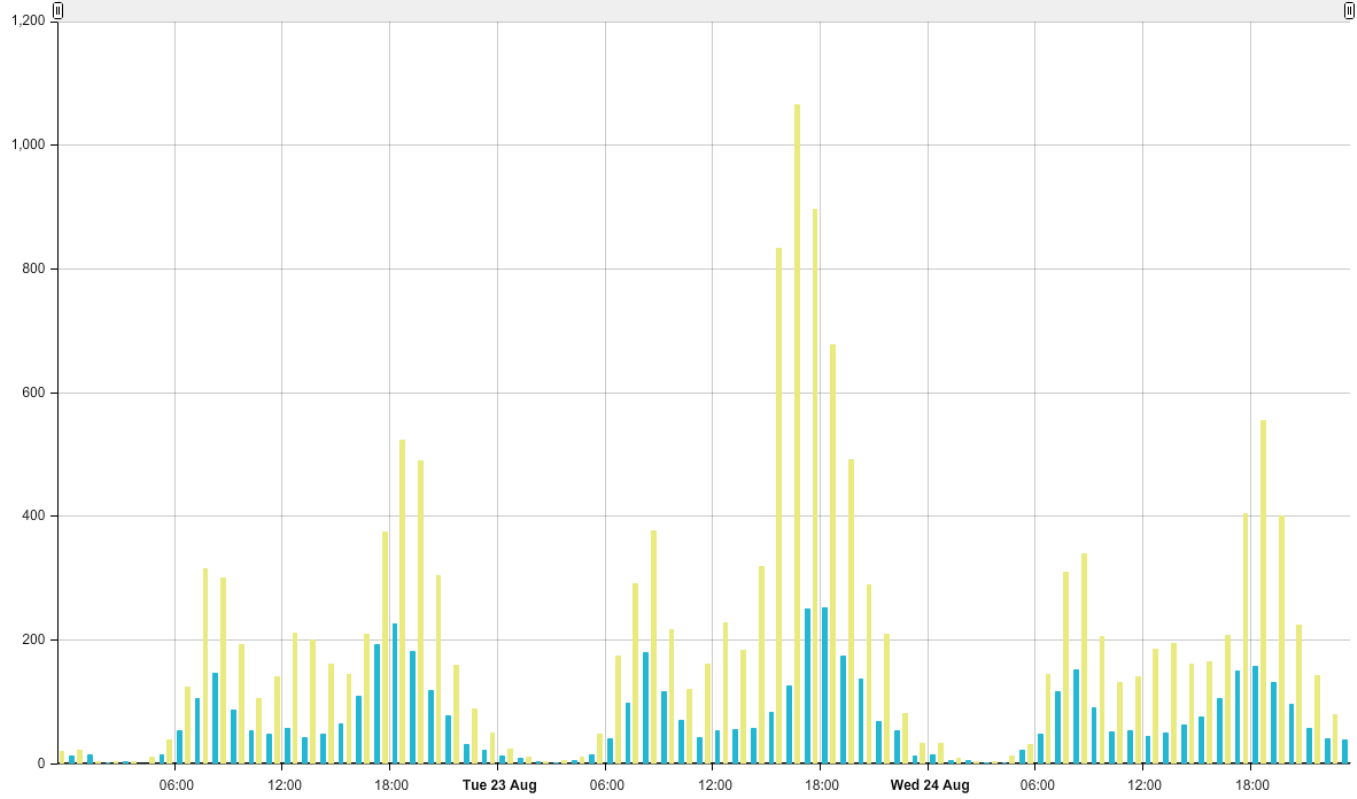
Like 1,538 people like this. Sign Up to see



<http://www.bikearlington.com/pages/biking-in-arlington/counter-dashboard/>

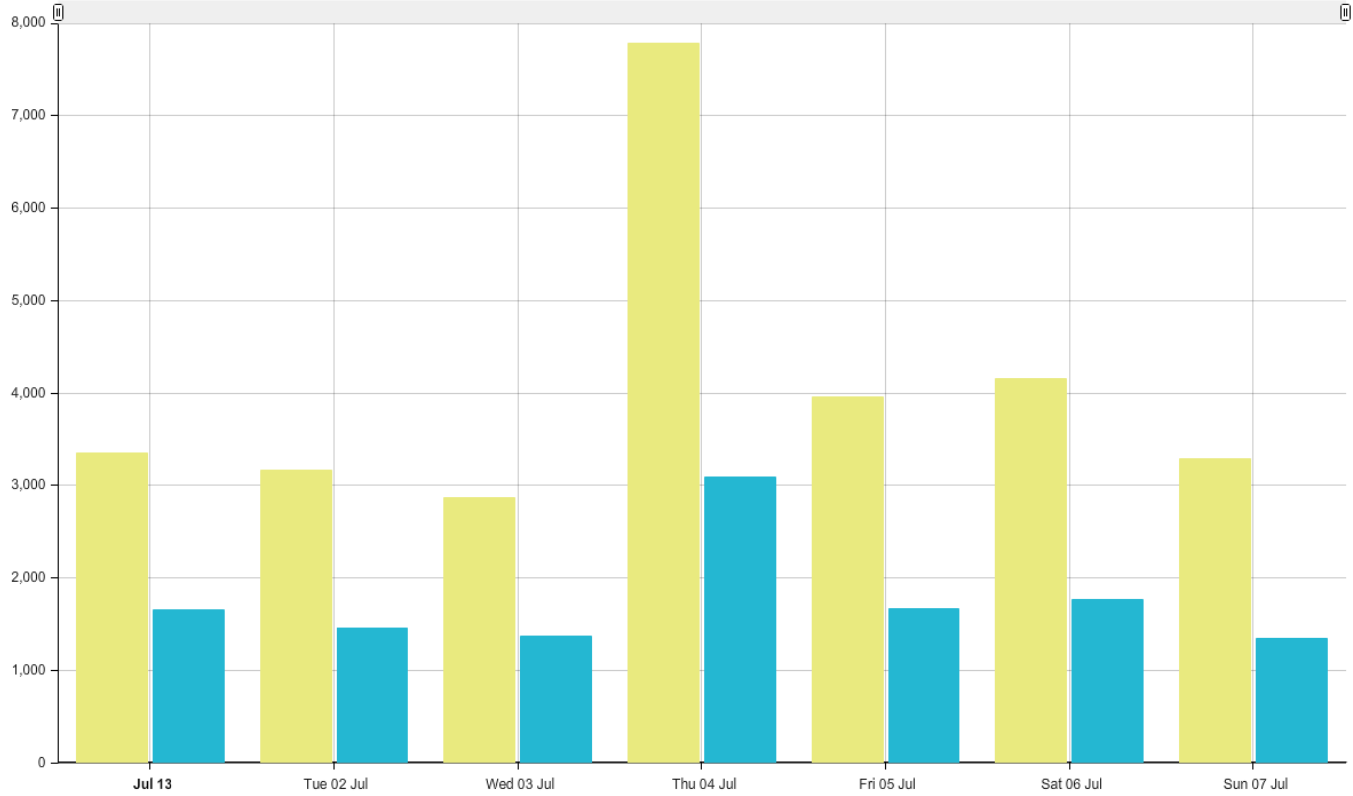
08/22/2011 - 08/24/2011

- Key Bridge East
- Key Bridge West



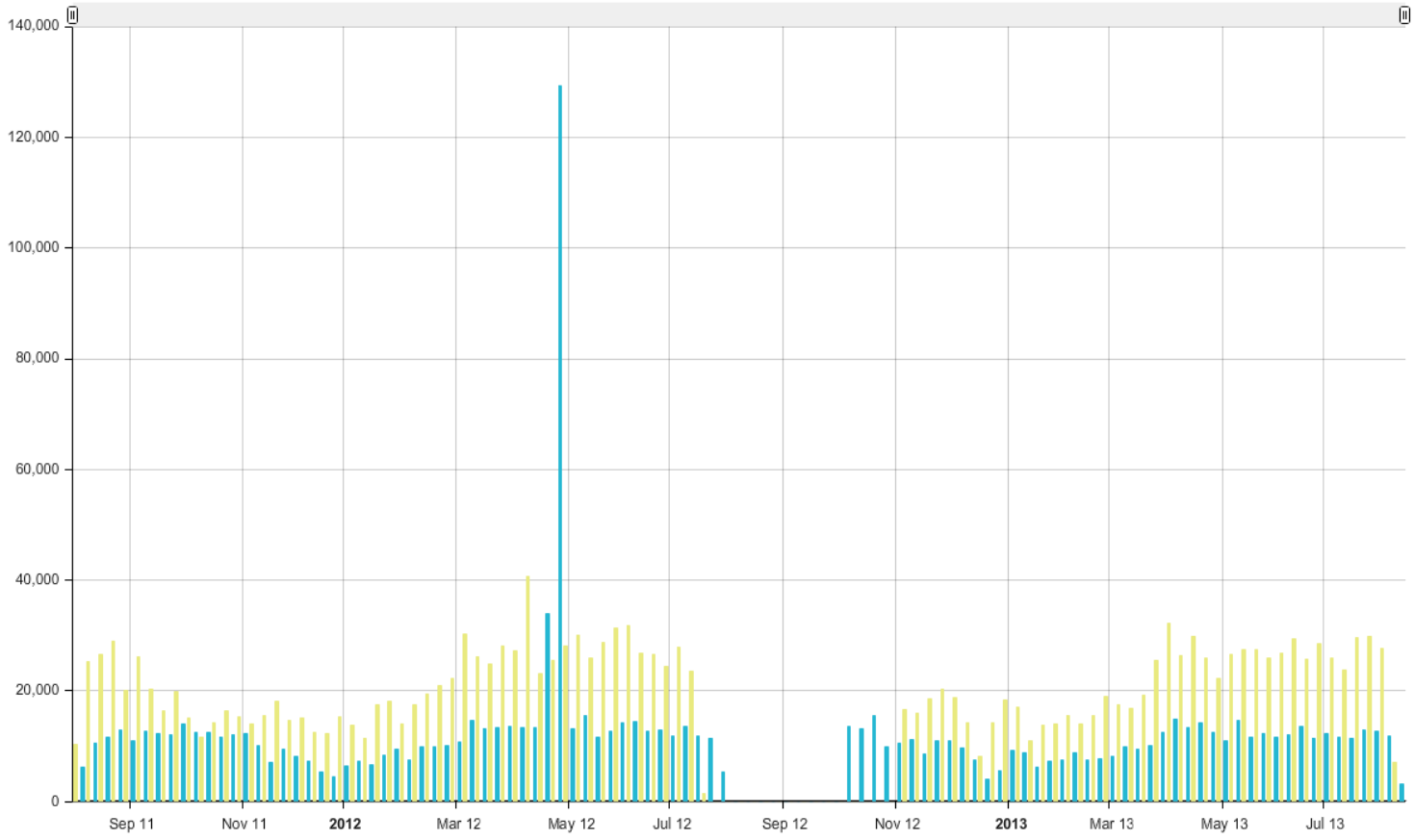
07/01/2013 - 07/07/2013

- Key Bridge East
- Key Bridge West

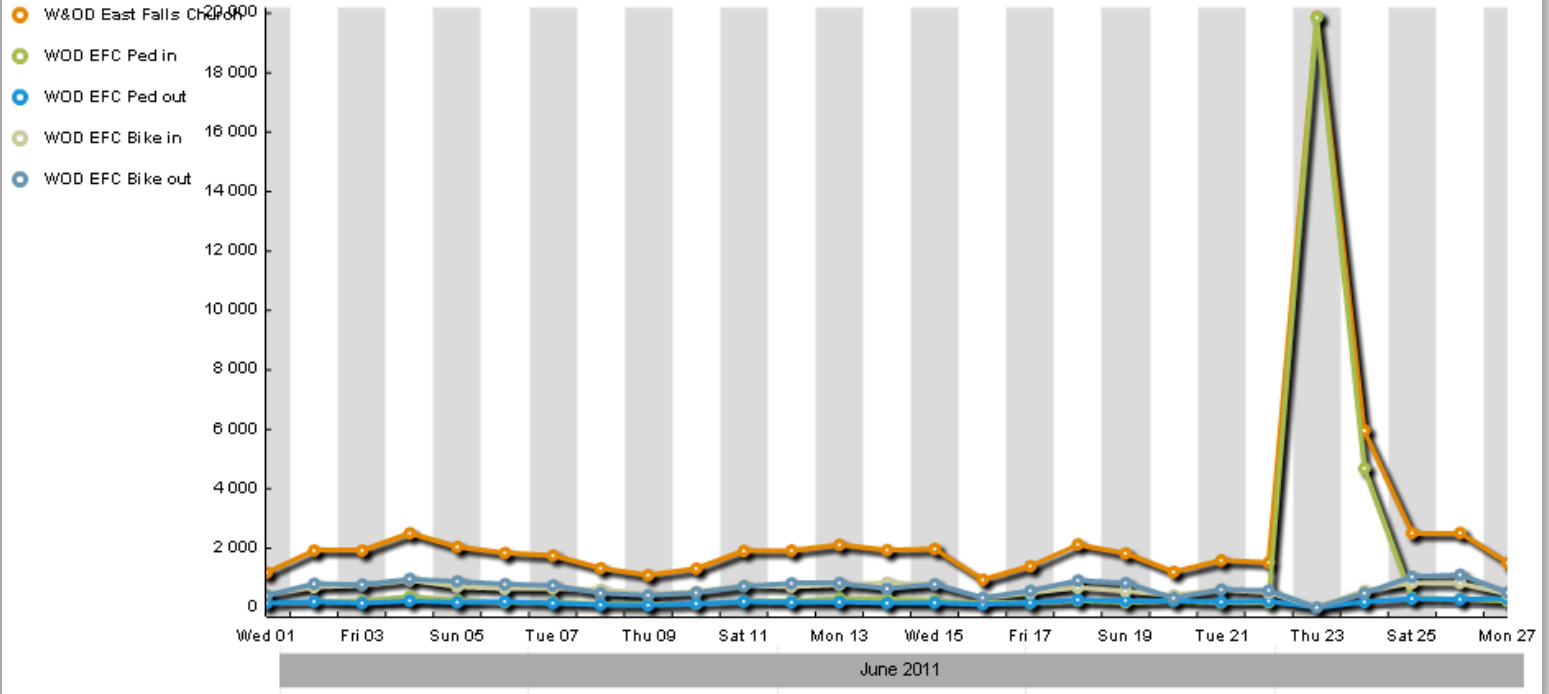


08/11/2011 - 08/13/2013

- Key Bridge East
- Key Bridge West

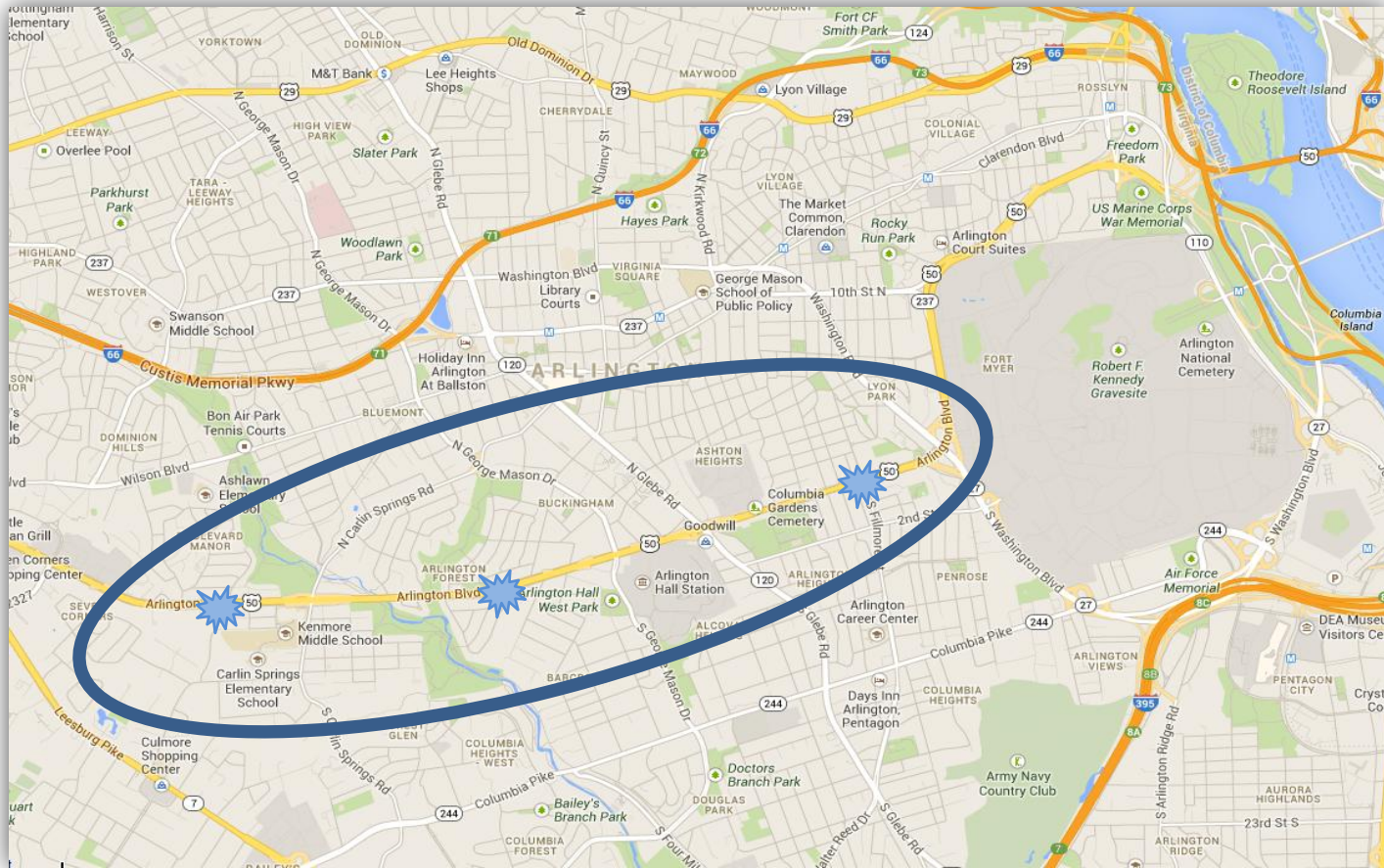


01/06/2011 - 27/06/2011

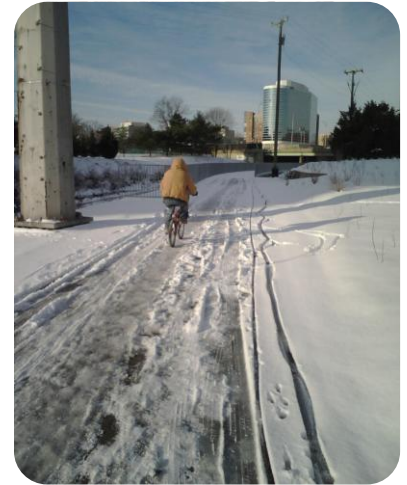






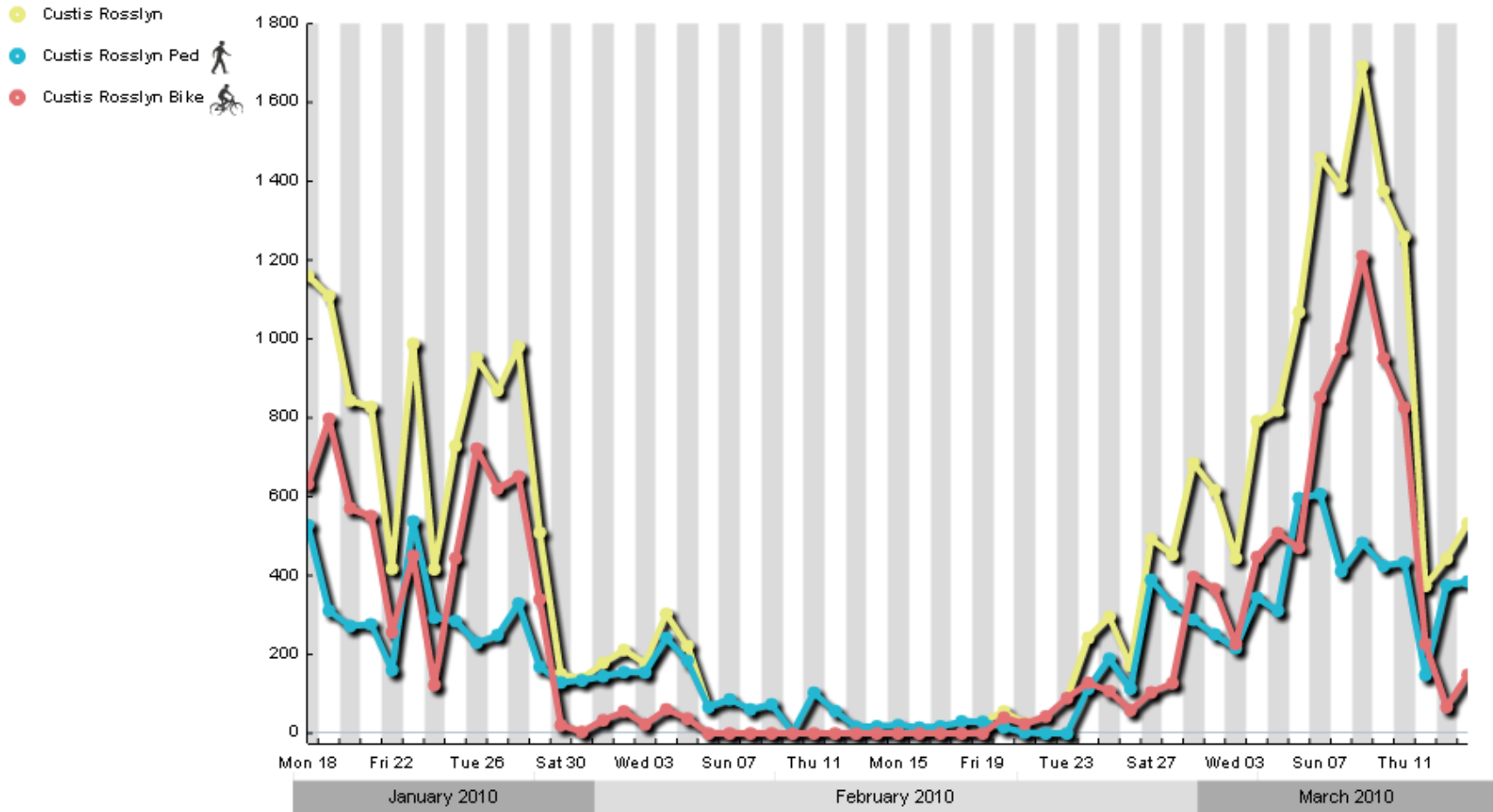


Calculate exposure for safety projects
 $62,000 \text{ vpd} \times 500 \text{ peds} = 31,000,000$
potential conflicts



“Snowmageddon” February 2010

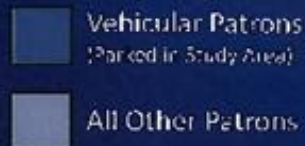
01/18/2010 - 03/14/2010



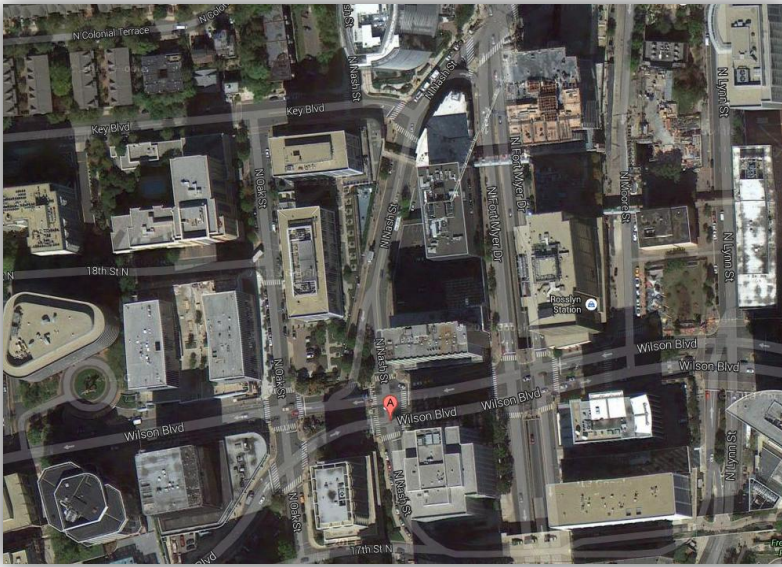
Weekday Summary

Weekday

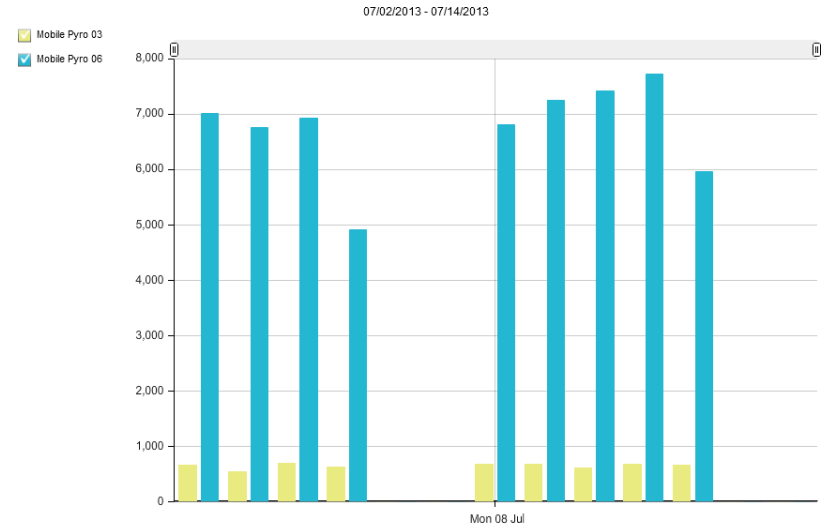
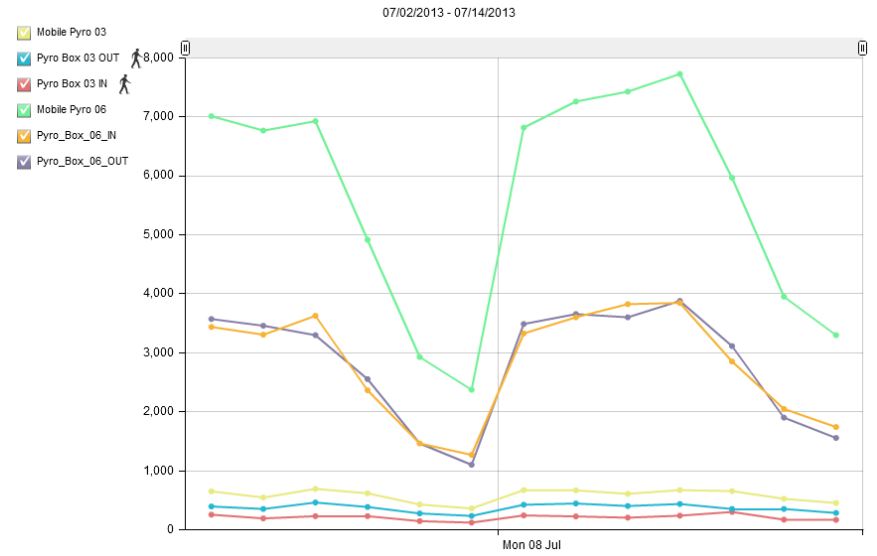
Approximately 30% of motorists parked in study area did not visit a business in the study area



Pedestrian / Parking / Patronage study



Pedestrian data for developer negotiations





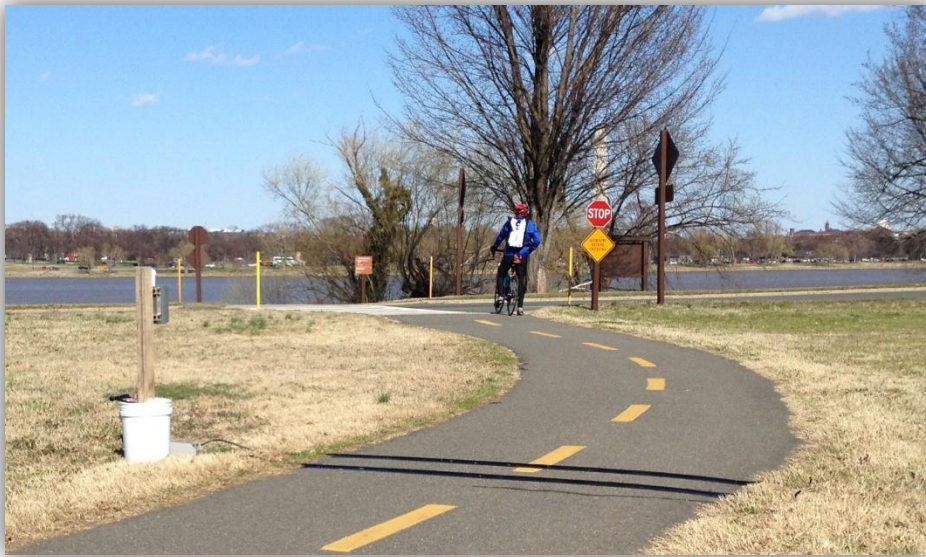
Data to support facility
improvements and speed
limit studies

Going Places on the Arlington Loop

In Arlington there are 50 miles of off-street trails that make getting to where you need to go by bike incredibly easy. There are 4 trails in particular that create a sort of loop around the center of Arlington: the **Mount Vernon**, **Custis**, **W&OD** and **Four Mile Run** trails. This "Arlington Loop" connects you to almost every amenity in Arlington you can think of. The entire loop is 17 miles long, but you don't have to ride it all at once – most trips on the Loop are much shorter.



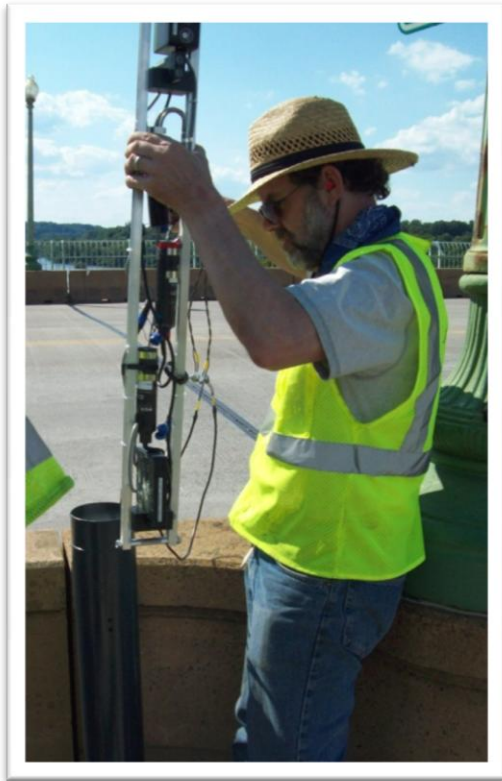
14 of 30 devices on or very close to "The Loop"



Cooperation, collaboration, innovation



We're planting trees ...



David Patton

Bicycle and Pedestrian Planner
Arlington County DES / DOT
2100 Clarendon Boulevard, Suite 900
Arlington, VA 22201

dpatton@arlingtonva.us

www.bikearlington.com

Office: 703-228-3633

Mobile: 202-460-9470

Fax: 703-228-7548