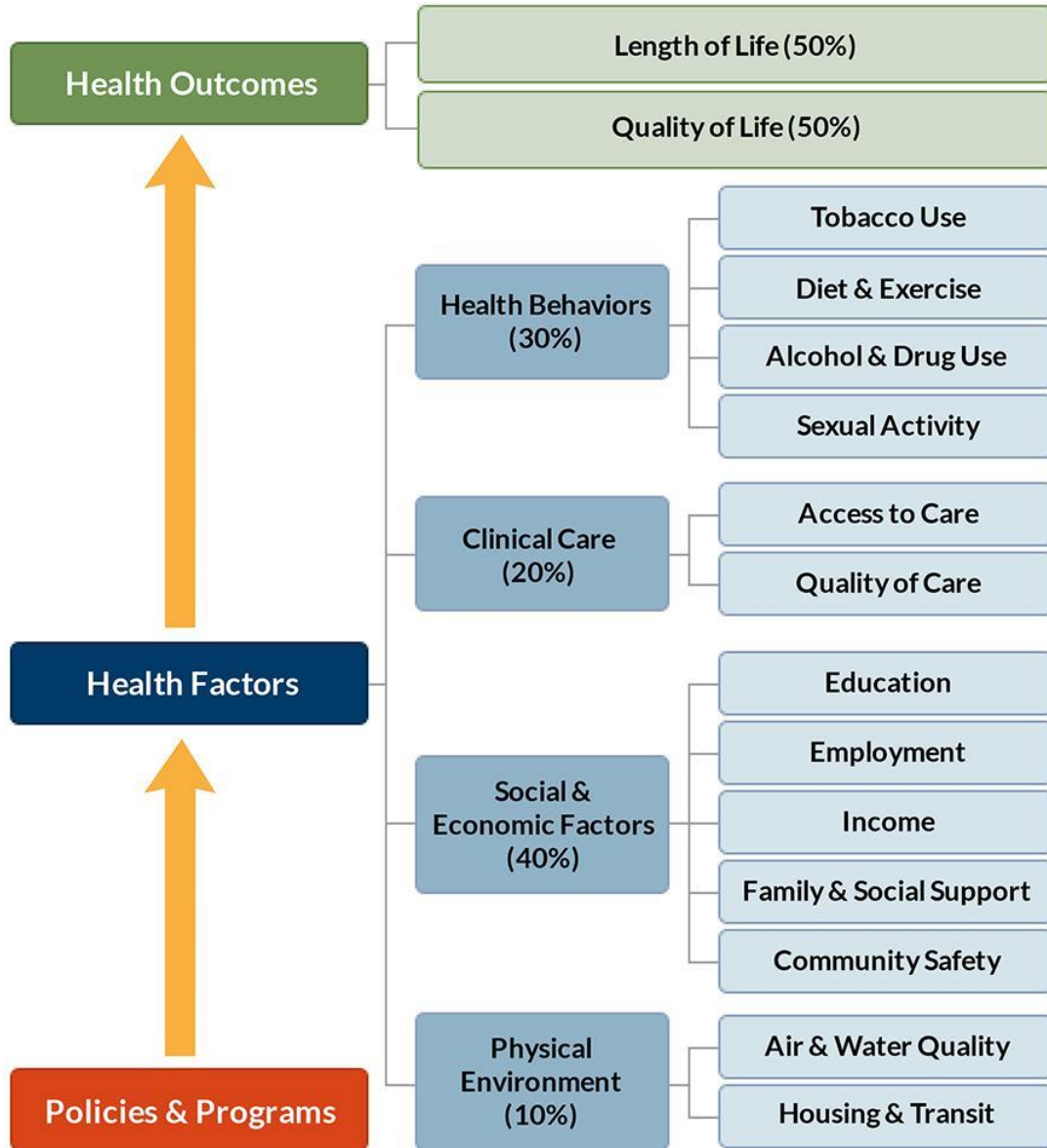


Regional Health Indicators Project: An Overview for the Human Services and Public Safety Policy Committee

Steven H. Woolf, MD, MPH
Executive Director
Center on Society and Health
Virginia Commonwealth University



County Health Rankings model © 2014 UWPHI

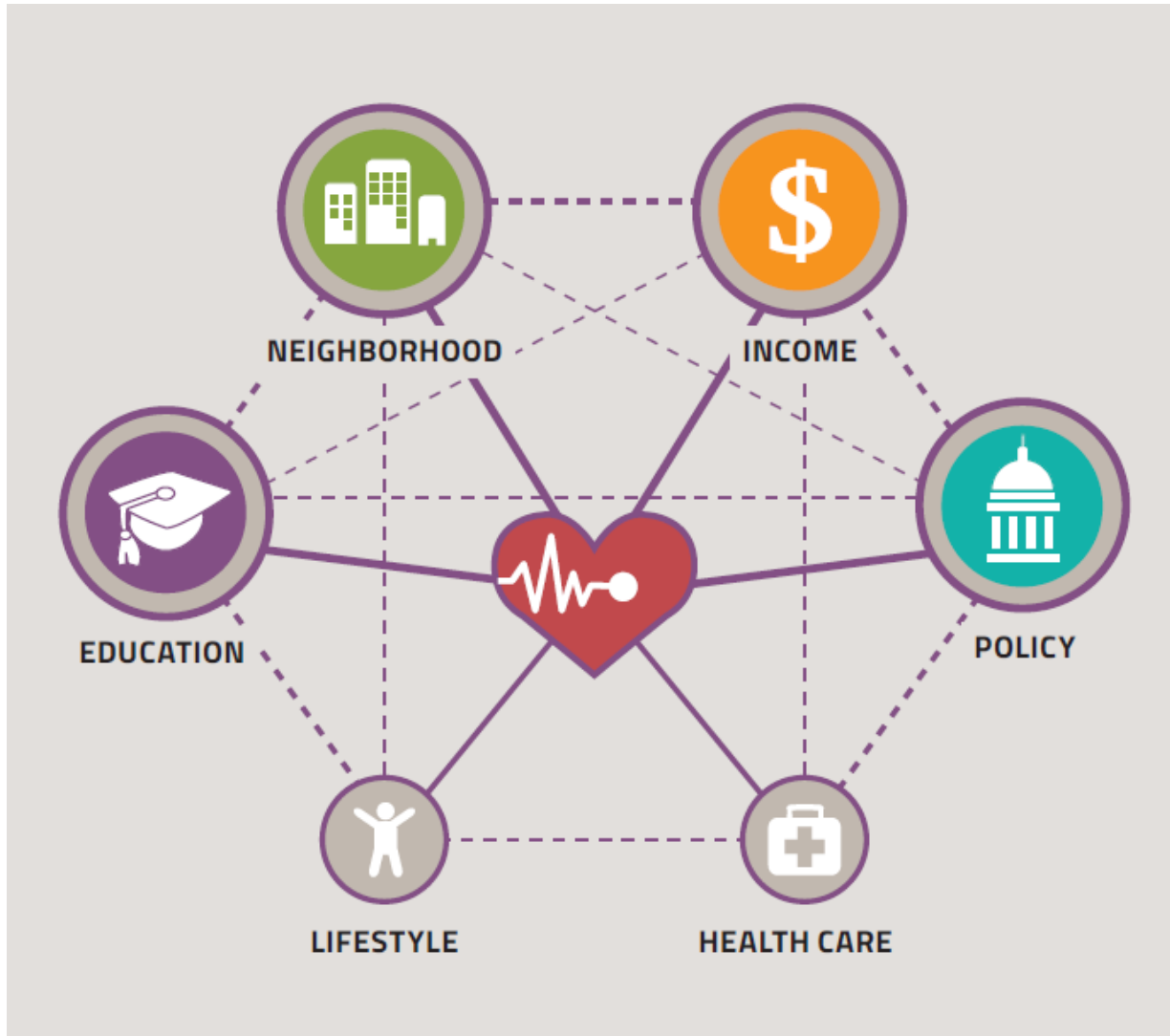
2013 “Metro” Map



Why the Differences?

- **Education and income** are directly linked to health: Communities with weak tax bases cannot support high-quality schools and jobs are often scarce in neighborhoods with struggling economies.
- **Unsafe or unhealthy housing** exposes residents to allergens and other hazards like overcrowding.
- **Stores and restaurants selling unhealthy food** may outnumber markets with fresh produce or restaurants with nutritious food.
- **Opportunities for residents to exercise, walk, or cycle** may be limited and some neighborhoods are unsafe for children to play outside.
- **Proximity to highways, factories, or other sources of toxic agents** expose residents to pollutants.
- **Access to primary care doctors and good hospitals** may be limited.
- **Unreliable or expensive public transit** can isolate residents from good jobs, health and child care, and social services.
- **Residential segregation and features that isolate communities** (e.g., highways) can limit social cohesion, stifle economic growth, and perpetuate cycles of poverty.

Connecting the Dots



A Study in Contrasts: Why Life Expectancy Varies In Northern Virginia

A Report by the Center on Society and Health
Virginia Commonwealth University

Supported by the Northern Virginia
Health Foundation



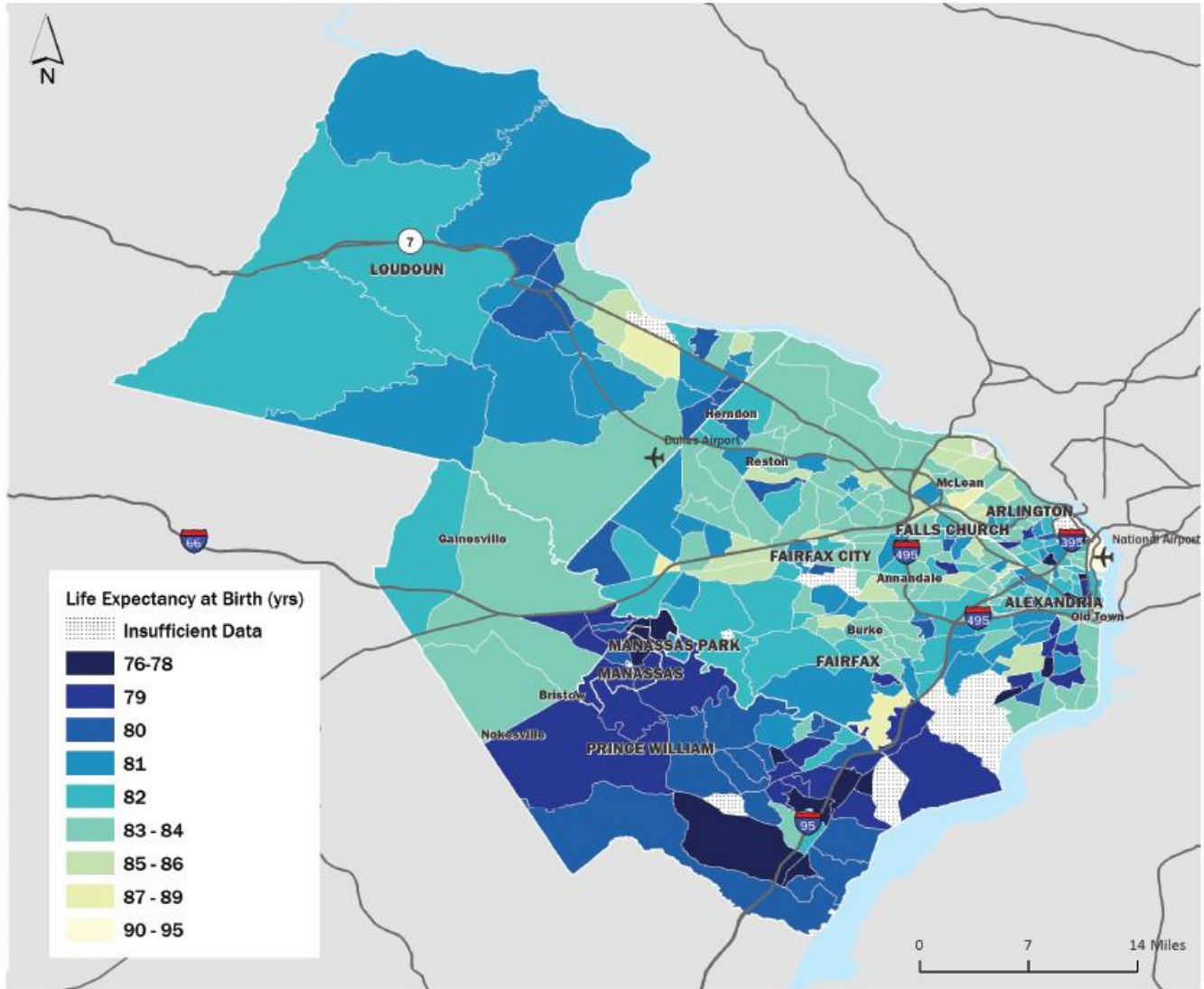
Steven H. Woolf, MD, MPH
Derek A. Chapman, PhD
Jong Hyung Lee, MS
Lauren Kelley, MPH
Steven A. Cohen, DrPH, MPH

 Center on Society and Health

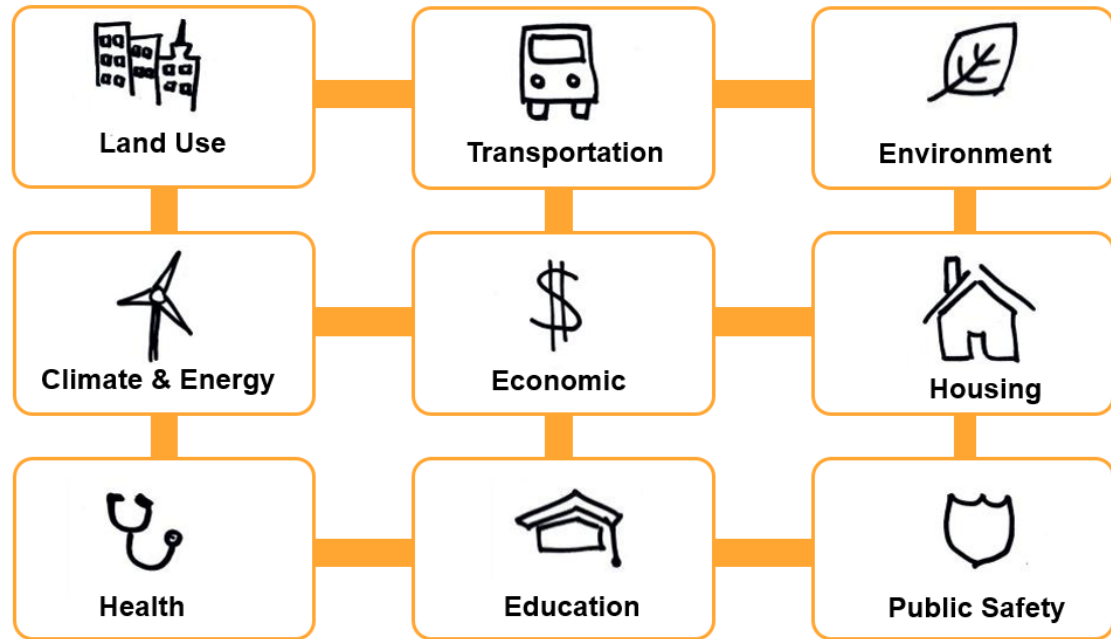
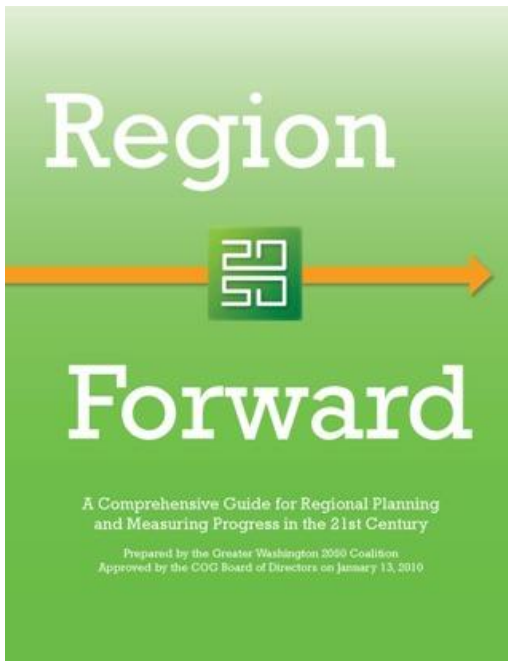
 Northern Virginia
Health Foundation

JUNE 2016

Life Expectancy at Birth (years)



Region Forward



Consultation about the project

<u>Date</u>	<u>Committee</u>
Nov. 2015	Health Officials Committee
Nov. 2015	HSPSPC
Feb. 2016	Region Forward Coalition
April 2016	Region Forward Coalition
July 2016	Region Forward Coalition
Aug. 2016	Health Officials Committee
Oct. 2016	Health Officials Committee
Oct. 2016	CAOs
Nov. 2016	HSPSPC

Regional Health Indicators Project

Phase I (Year 1)

- **Issue brief:** a discussion of life expectancy and quality of life across the region, to include:
 - Healthy Community Index cover image with color ramp spanning entire MWCOG region
 - Narrative discussion of factors that shape health and how they vary by geography
 - Specific examples from DC and suburban census tracts, including success stories
 - Updated DC Metro map
 - “Zoom in” maps
- **Raw data file** for use by Health Officials Committee
- **Brief methodology document** documenting the scientific methods used in the calculations
- **Map tool** for Montgomery County, MD

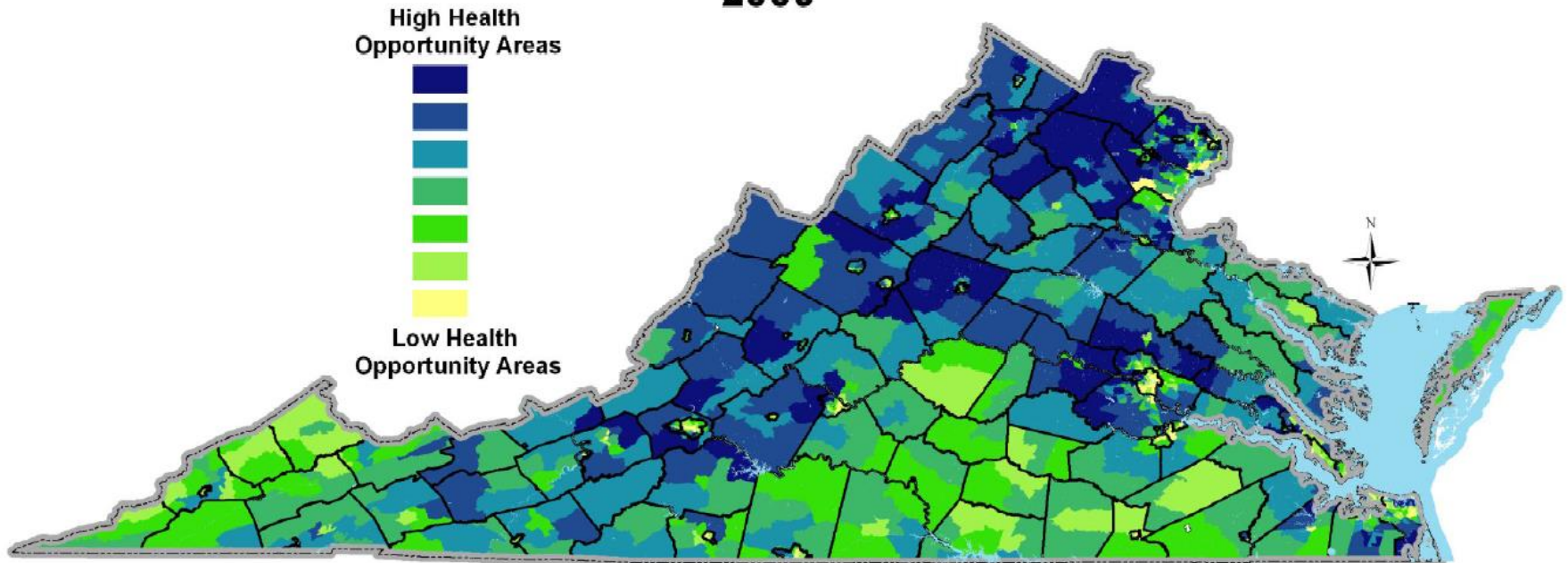
- 80 detailed **geospatial maps*** of:
 1. The District of Columbia
 2. Charles County, MD
 3. Frederick County, MD (plus City of Frederick)
 4. Montgomery County, MD (plus Gaithersburg, Rockville, and Tacoma Park)
 5. Prince Georges County, MD (plus Bladensburg, Bowie, College Park, and Greenbelt)
 6. Arlington County, VA
 7. Alexandria City, VA
 8. Fairfax County, VA (plus Fairfax City and Falls Church)
 9. Loudoun County, VA
 10. Prince William County, VA (plus Manassas and Manassas Park)

*80 maps will include life expectancy maps for each MWCOG sub area (N=10), Healthy Community Index maps for each MWCOG sub area (N=10), subscale maps for each of six Healthy Community Index domains (N=60)

Health Opportunity Index

Virginia

Health Opportunity Index (HOI) *
By Census Tracts
2009 **



Policy opportunities

- Identify pockets of need
- Develop synergy across Region Forward sectors
- Leverage investments in strategic solutions
- Create data platform for Health Officials Committee
- Establish benchmarks for tracking progress

Contact Information

The VCU Center on Society and Health is an academic research center working to connect the dots between social factors and health.

Steven H. Woolf, MD, MPH

Derek A. Chapman, PhD

Center on Society and Health

Virginia Commonwealth University

Phone: 804-628-4055

Email: Steven.Woolf@vcuhealth.org; Derek.Chapman@vcuhealth.org

Website: www.societyhealth.vcu.edu