



# H & I Streets NW Pilot Bus Lanes



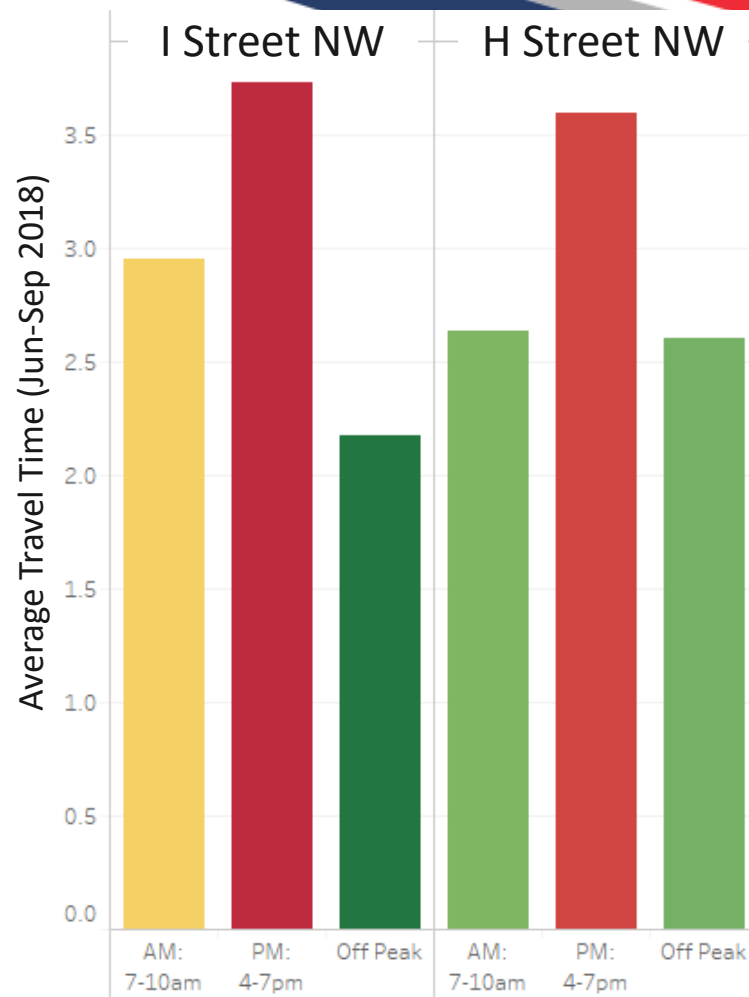
June 3 to September 27, 2019

# H & I Streets NW Pilot Bus Lanes

## Background

Why is H & I Street NW so critical to bus riders?

- Bus speeds are very slow
  - The 42 route averages 2.8 mph on I Street NW in the PM (14<sup>th</sup> to 17<sup>th</sup> St)
  - Congestion affects reliability along the entire route, even for non-downtown riders
  - 40% of bus riders in the District take routes that use H, I, or K Street

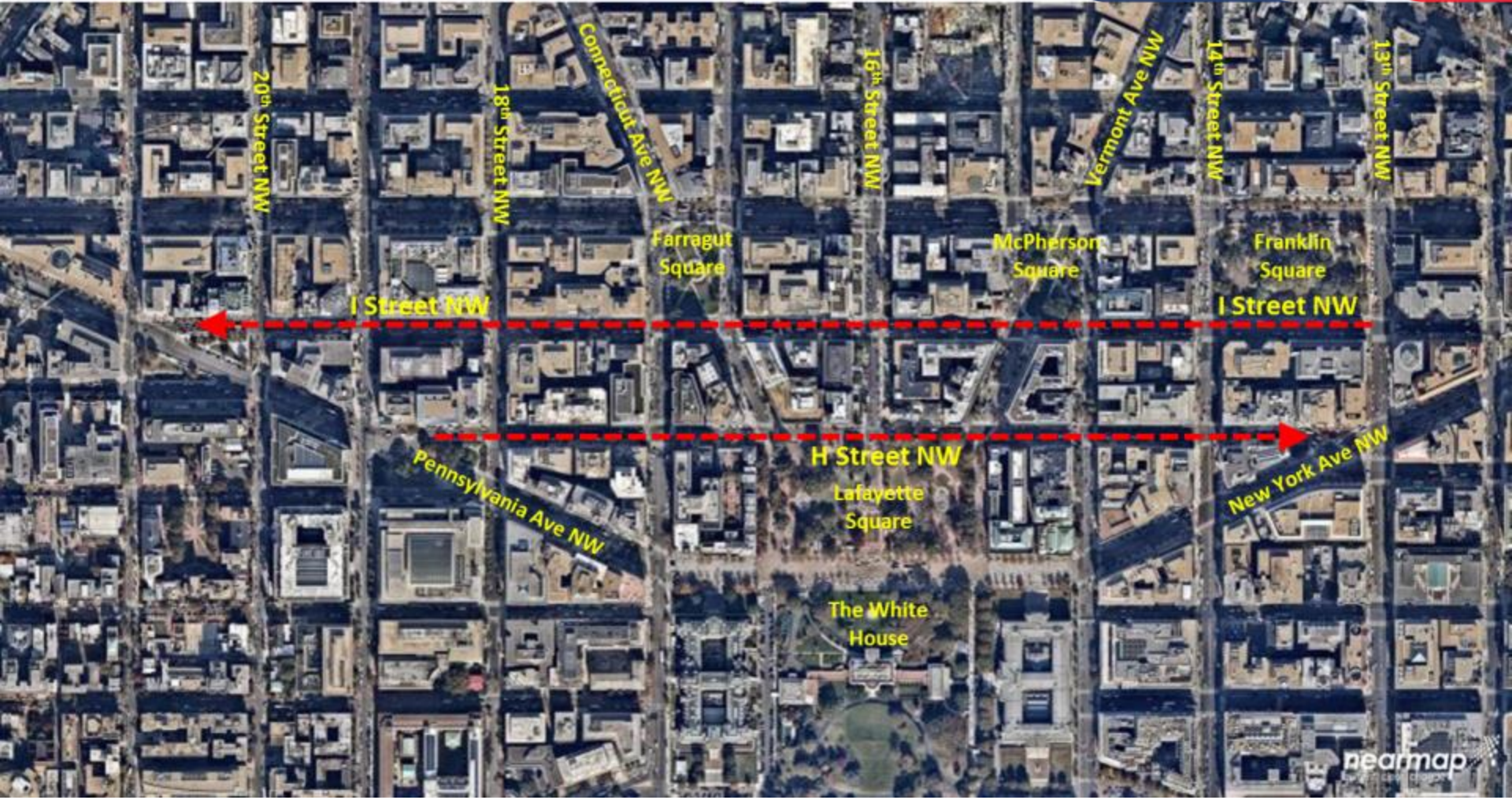


## Why do a pilot?

- Public perception: Too many studies, not enough action
  - DDOT and WMATA already completed two studies on the corridor
  - ANC and Downtown BID support for bus lanes
  - Some concern from adjacent buildings, which a pilot could help to address
- Rhode Island Avenue Temporary Bus Lanes
  - Implemented during the Red Line Shutdown (July to September 2018)
  - Lessons learned + Opportunity to improve

# Bus Lanes on H & I Streets NW

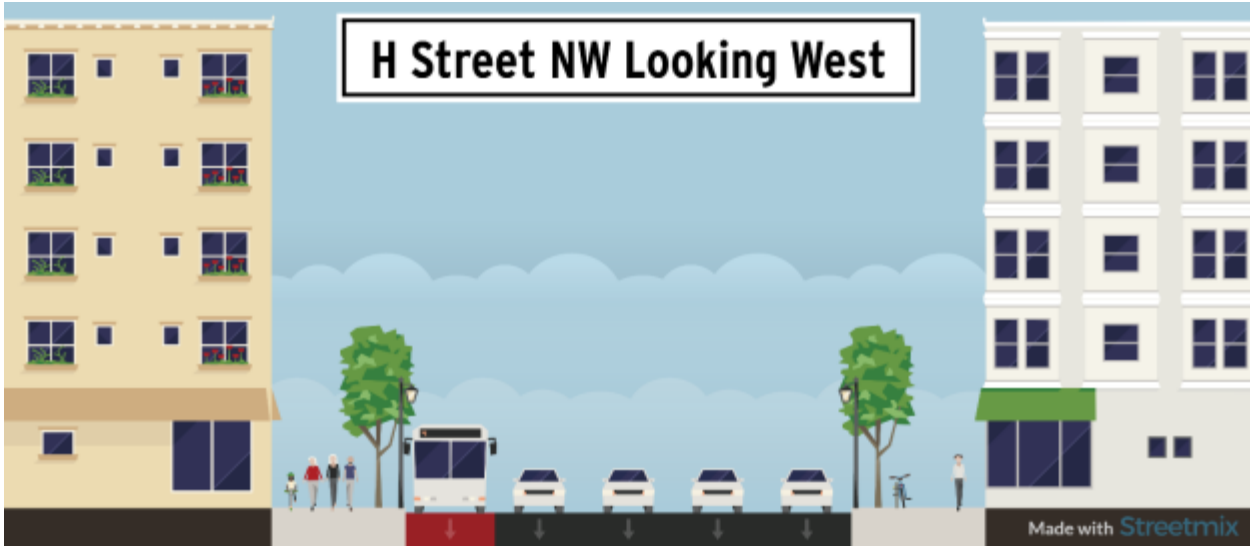
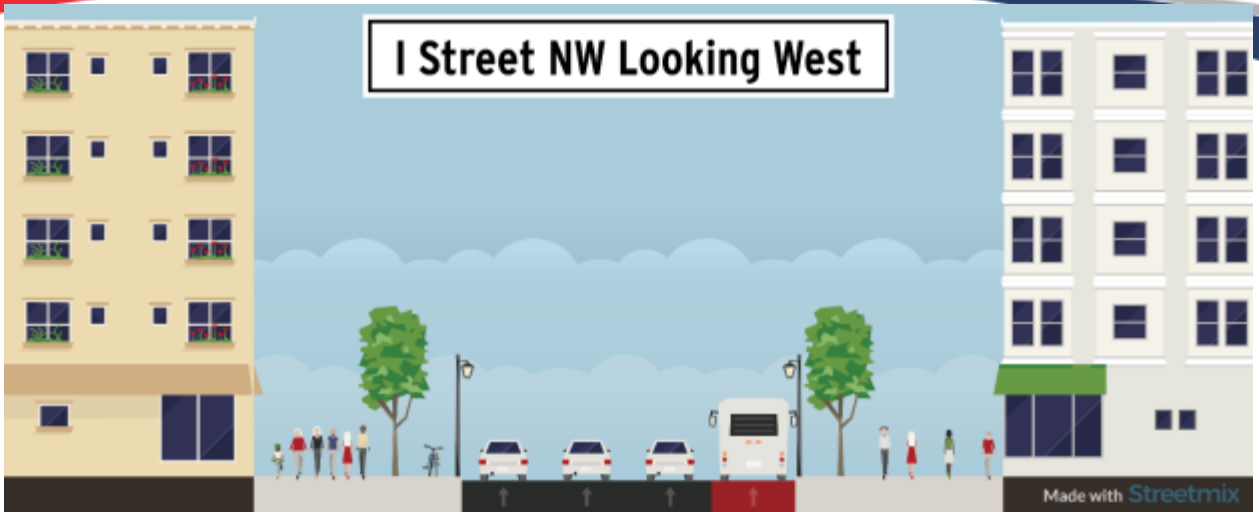
June 3 to September 27, 2019



## Bus Lanes - Hours of Operation

AM Rush: 7am – 9:30am      PM Rush: 4pm – 6:30pm

# Bus Lanes on H & I Streets NW



## Bus Lanes - Hours of Operation

AM Rush: 7am – 9:30am

PM Rush: 4:00pm – 6:30pm

# Lessons Learned - RI Avenue Temporary Bus Lanes

1. Early coordination
2. Identify budget requirements and funding sources
3. Develop an Evaluation Plan and monitor performance
4. High visibility Launch Day/Launch Week activities
5. Enhanced markings and signage
6. Enforcement

## Outreach

- BIDs, ANCs, SHPO, CFA, NCPC

## DDOT Teams

- PSD, TDD, TOSD, FOB, PGTD, Policy, Communications, RAD

## Interagency Coordination

- DPW, DFHV, MPD, WMATA, MTPD
- Primary focus: Enforcement
  - “Unauthorized vehicle parked in a bus lane” (\$200 fine)
  - “Bus lane, unauthorized driving” (\$200 fine)





## Enhanced markings and signage



# Lessons Learned - RI Avenue Temporary Bus Lanes

## Coordinated multi-agency enforcement



## Who else can use the bus lanes?

### DCMR 18-2217.5

No vehicle shall travel on those portions of streets designated as bus lanes by pavement markings or signage, except:

- (a) transit buses, tour buses, charter buses, and school buses;
- (b) taxicabs that are in active passenger service;
- (c) bicycles except pedicabs;
- (d) paratransit service vehicles;
- (e) authorized emergency vehicles; or
- (f) as provided in § 2217.6.

### DCMR 18-2217.6

A vehicle may enter a designated bus lane within forty feet (40 ft.) of an intersection or driveway, to engage in a turn at that intersection or driveway.

## What's next

- Performance: Mobility, Reliability, Compliance, Safety
- Preliminary Evaluation- July/August
- Recommendations for future (permanent?) Bus Lanes on H & I – September

d. delivers

district department of transportation

