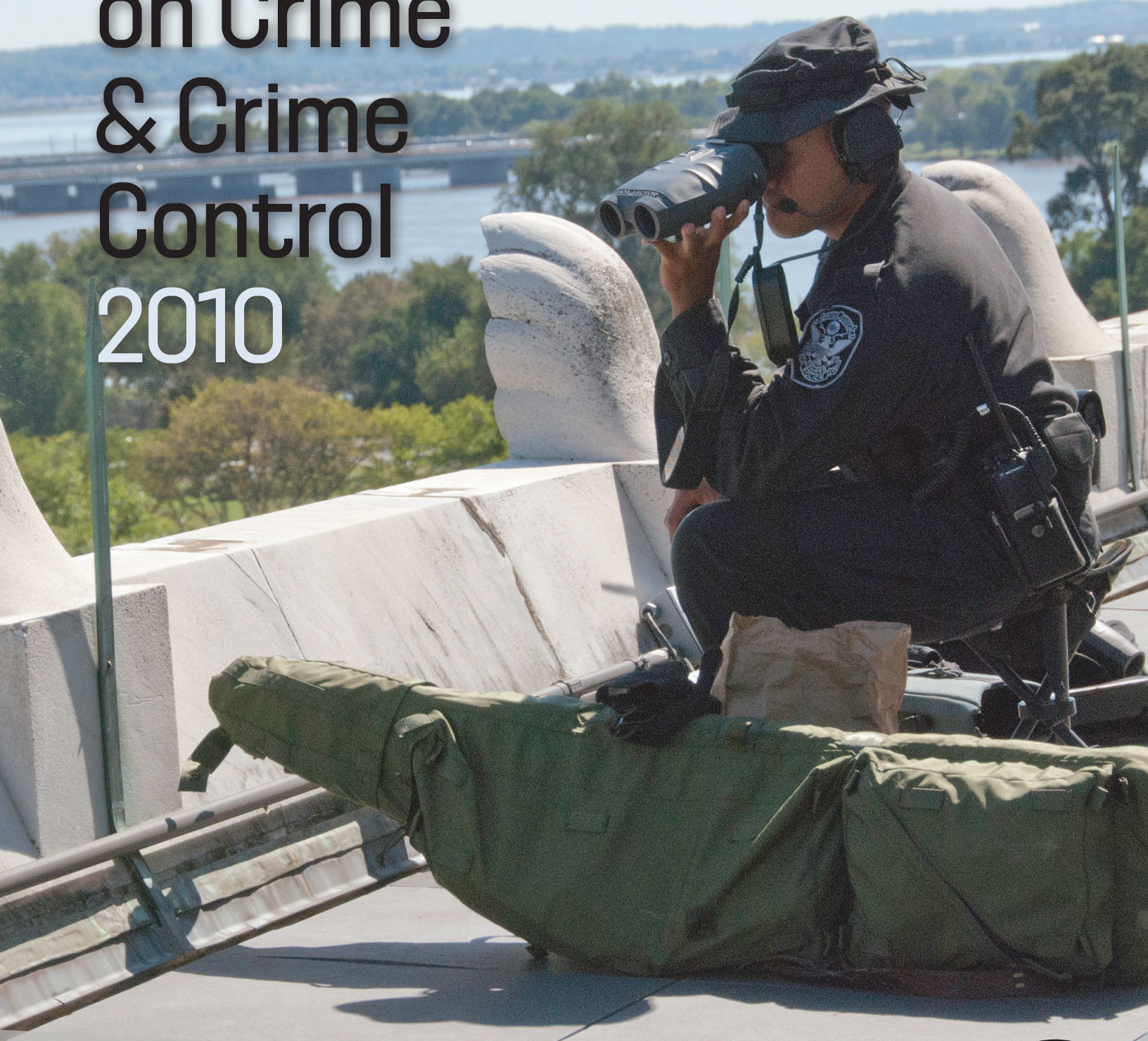


Annual Report on Crime & Crime Control 2010

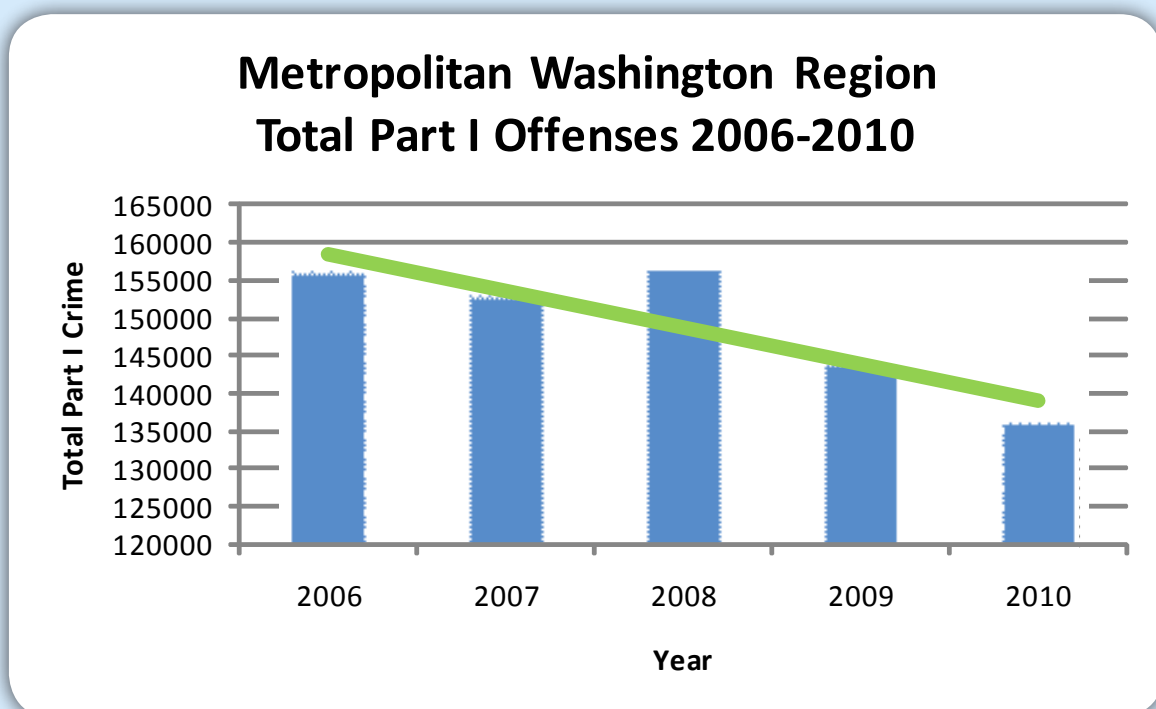


Overview: 2010

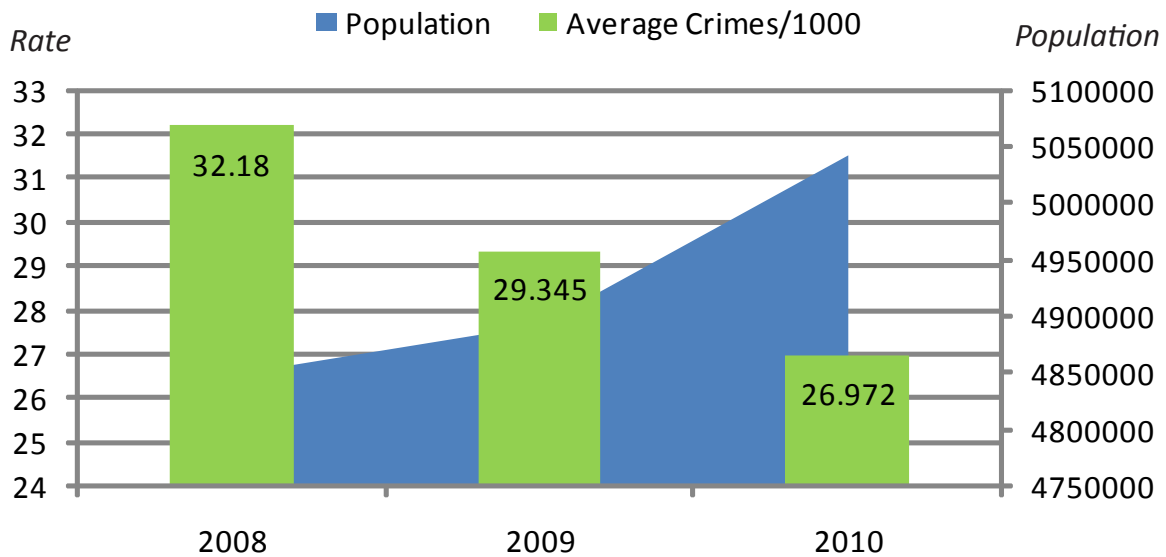
The Metropolitan Washington Council of Governments' (MWCOG) annual crime report is based on crime incidents reported by participating agencies in the metropolitan region. The 2010 Annual Report on Crime and Crime Control focuses on Part I offenses as defined by the Federal Bureau of Investigation, which include the crimes against person: homicide, rape, robbery, and aggravated assault; and the crimes against property: burglary, larceny, and motor vehicle theft. In 2010, the metropolitan Washington region recorded 135,974 total Part I offenses, a 5.3% reduction from 2009 levels (143,568).

Decreases were experienced in nearly all of the Part I categories: motor vehicle theft (-9.7%), aggravated assault (-7.1%), larceny (-5.7%), homicide (-5.6%), robbery (-4.5%), and rape (-1.9%). Burglary was the only Part I category to register an increase, with 275 more burglaries in 2010 (18,477) than 2009 (18,202).

Despite the slight increase in burglaries, the reduction in all Part I categories over the last five years is notable and consistent with national crime trends. Since 2006, the region has witnessed an overall 12.6% decline in Part I crime offenses, driven largely by tremendous reductions in motor vehicle theft (-42.2%), homicide (-28.5%), aggravated assault (-27.4%), robbery (-16.3%), and rape (-10.9%). Despite a 2008 spike in the number of reported larcenies and burglaries, crime data received from participating agencies indicates that the overall numbers for larceny and burglary have also declined over the last five years, by 4.3% and 1.7% respectively. And in 2010, the crime rate per capita decreased to 26,972 crimes per 1,000 people, an improvement over the 2009 rate of 29,345 per 1,000.



Crime Rate per Capita 2008-2010



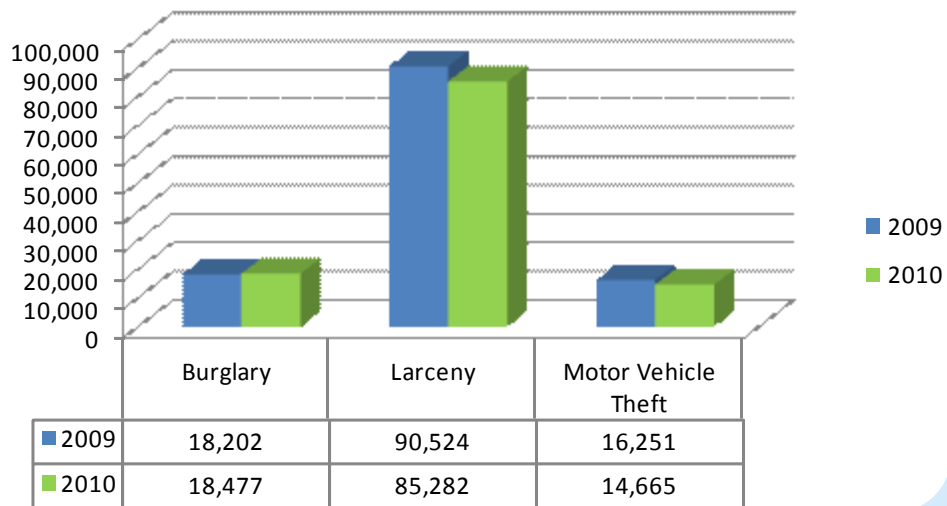
While the crime rate is useful and commonly accepted as a basic indicator of overall crime trends, crime statistics must be viewed in context with environmental influences. Factors such as changes in reporting rates, demographics, the economy, the law, and changes in police policies and resources, can all have an influence on the number of reported crimes. Despite the challenges related to serving a rising population with fewer sworn officers, reduced budgets, and waning federal funding opportunities, law enforcement agencies managed to respond to more than 3 million calls for service in 2010.

Did you know?

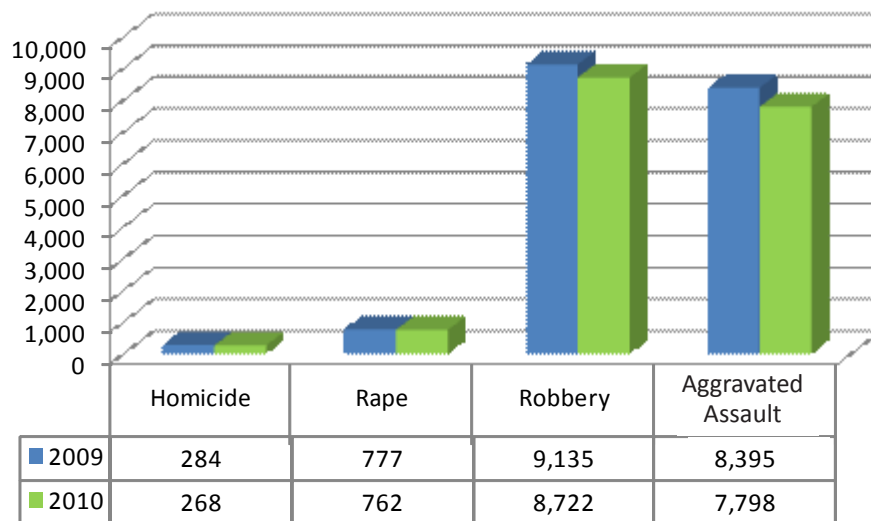
Reducing the number of violent and property crimes is a target of *Region Forward*, a vision plan agreed to by the Metropolitan Washington Council of Governments and all 21 local governments in the area. Learn more about the plan at www.RegionForward.org

Crime Trends

Property Crime 2009 v. 2010



Violent Crime 2009 v. 2010



Preventing crime can be a challenge. Last year, the COG Police Chiefs Committee agreed they would continue to educate the public; encourage cooperation between communities, business leaders, and law enforcement; and expand the use of innovative technologies in order to reduce opportunities for crimes and make arrests. Overall, this appears to have been a successful strategy. For example, in the City of Fairfax, to combat increasing thefts from motor vehicles, the police department introduced the *Lock, Take, and Hide program*, which encourages residents to lock up their vehicles, and hide or remove valuables. The program is designed to influence the behavior of the public through strategically placed reminders on the back of busses, signs in parking lots, key chains, and other “giveaways” to motorists. The program continues to be introduced to community groups and civic associations during public speaking engagements, where it has received positive reviews and drawn a great deal of interest.

Technology has also played a significant role in the improvements seen in the metropolitan area, providing officers with the tools needed to detect, prevent, and respond to criminal activity. The National Capital Region Law Enforcement Information Exchange (NCR LInX) has been the bedrock of law enforcement information sharing efforts. Most recently, use of advanced analytics with LInX data resulted in the successful investigation and apprehension of the East Coast Rapist. The metropolitan Washington region has also begun developing a network of fixed and mobile license plate readers (LPR). This program, managed by Arlington County and spread throughout the jurisdictions, gives officers the ability to scan and analyze thousands of tags a day. In 2010, use of the mobile license plate readers was instrumental in the quick apprehension of a subject operating a vehicle belonging to a murdered American University professor.



Perhaps one of the biggest factors that have led to the reductions seen recently is the tremendous regional cooperation and collaboration among the local, state, and federal agencies in the metropolitan area. Although it has always existed to some extent, these partnerships were reaffirmed and strengthened during the DC Sniper case and the 9/11 response at the Pentagon. Local and federal agencies consistently partner on crime prevention efforts, like the successful motor vehicle theft task force which has operated over the last few years, and the various regional drug and gang task forces. And local and federal partners also combine efforts with their residents, businesses, and nonprofits to make their communities safer and improve the quality of life. Examples of this collaboration include partnerships with the Alice Ferguson Foundation to conduct an annual litter enforcement campaign, and coordination with the Drug Enforcement Administration to host Prescription Drug Take Back events. Just recently, the DEA held its second annual National Take Back Initiative, and was able to collect 188 tons of prescription drugs from the public. This event not only reduces the risk of prescription drug diversion and abuse, but also increases awareness of this critical public health issue.

It should be noted that reporting methods are not uniform throughout this report since some departments used the Uniform Crime Reporting (UCR), while others used the National Incident Based Reporting System (NIBRS). Recognizing the need for additional information about crime, the FBI launched NIBRS as an enhanced UCR Program. The FBI recognized that conversion to the new system would be gradual, so it is appropriate for agencies to still report under UCR. As a general rule, NIBRS crime rates tend to be higher than UCR rates, primarily because NIBRS statistically counts all separate violations within a single criminal event. UCR counts only the most serious crime. The average difference, however, is small.



Part 1 Crime Offenses: 2010

COG DEPARTMENTS	REPORTING METHOD	HOMICIDE	RAPE	ROBBERY	AGG ASSAULT	BURGLARY	LARCENY	M/V THEFTS	TOTAL OFFENSES	CRIMES PER 1000	POPULATION
D.C. Metropolitan Police	UCR	131	184	3914	3,238	4,224	18,050	4,864	34,605	57.510	601,723
Bladensburg Police Department	UCR	1	1	38	87	123	279	113	642	82.935	7,741
Bowie Police Department	UCR	2	2	57	45	212	716	116	1,150	20.909	55,000
Frederick County Sheriff's Office	UCR	2	15	28	162	271	1,224	66	1,768	7.473	236,583
Frederick Police Department	UCR	2	16	162	274	262	1,363	87	2,166	33.201	65,239
Greenbelt Police Department	UCR	2	11	106	66	221	761	133	1,300	62.192	20,903
Montgomery County Dept. of Police	NIBRS	17	119	911	553	3,323	15,261	1,455	21,639	22.267	971,777
Gaithersburg Police Department*	NIBRS	1	11	64	73	203	1,533	86	1,971	32.426	60,785
Rockville City Police Department*	NIBRS	0	10	69	41	239	1,082	66	1,507	24.621	61,209
Prince George's County Police Dept.	UCR	82	169	2,462	2,219	6,399	16,234	5,597	33,162	39.736	834,560
Takoma Park Police Department	UCR	0	1	48	26	150	364	63	652	36.168	18,027
Alexandria Police Department	NIBRS	2	20	125	125	310	2,805	282	3,669	26.214	139,966
Arlington County Police Department	NIBRS	1	24	143	142	307	3,942	211	4,770	22.564	211,400
City of Fairfax Police Department	NIBRS	0	3	10	13	26	507	30	589	26.102	22,565
Fairfax County Police Department	NIBRS	16	74	394	450	1,211	14,345	963	17,453	16.134	1,081,726
Falls Church City Police Department	NIBRS	0	1	6	6	11	268	21	313	27.946	11,200
Loudoun County Sheriff's Office	NIBRS	1	46	39	114	319	2,442	145	3,106	9.945	312,311
City of Manassas Police Department	NIBRS	1	16	51	50	122	785	77	1,102	29.137	37,821
Manassas Park Police Department	NIBRS	0	7	7	4	15	184	14	231	15.931	14,500
Prince William County Police Dept.	UCR	8	53	221	224	971	5,752	428	7,657	19.230	398,183
SUBTOTAL		268	762	8,722	7,798	18,477	85,282	14,665	135,974	26.972	5,041,225
ASSOCIATE DEPARTMENTS	REPORTING METHOD	HOMICIDE	RAPE	ROBBERY	AGG ASSAULT	BURGLARY	LARCENY	M/V THEFTS	TOTAL OFFENSES		
Fauquier County Sheriff's Office	NIBRS	0	13	5	20	110	453	36	637		
FBI Police	OTHER	0	0	0	0	0	14	0	14		
Federal Protective Service	OTHER	0	1	2	7	4	486	2	502		
MNCPPC Police (Montgomery County)	UCR	0	2	15	2	9	165	3	196		
MNCPPC Police (Prince George's County)	UCR	1	3	49	58	11	257	15	394		
Maryland State Police**	UCR	1	1	0	6	0	41	63	112		
Metro Transit Police	NIBRS	0	3	1,003	133	5	921	194	2,259		
Metro. Wash. Airports Authority Police	NIBRS	0	0	1	2	2	278	82	365		
National Institutes of Health Police	UCR	0	0	0	7	1	110	0	118		
Naval Criminal Investigative Services	OTHER	1	33	1	10	5	14	0	64		
Pentagon Force Protection Agency	OTHER	0	0	0	1	1	57	1	60		
U.S. Capitol Police	OTHER	0	0	4	2	0	96	5	107		
U.S. Park Police	UCR	1	15	31	124	17	155	12	355		
Virginia State Police (Div. 7)	NIBRS	1	0	0	21	1	34	21	78		
SUBTOTAL		5	71	1,111	393	166	3,081	434	5,261		
GRAND TOTAL		273	833	9,833	8,191	18,643	88,363	15,099	141,235		
Footnotes											
*		Montgomery County also reports the data from the cities of Gaithersburg and Rockville.									
**		This includes figures from the College Park, Rockville, & Forestville Barracks.									

Part 1 Crime Arrests: 2010

COG DEPARTMENTS	REPORTING METHOD	HOMICIDE	RAPE	ROBBERY	AGG ASSAULT	BURGLARY	LARCENY	M/V THEFTS	TOTAL ARRESTS
D.C. Metropolitan Police	UCR	104	110	781	1,865	397	1,540	156	4,953
Bladensburg Police Department	UCR	0	0	12	11	31	23	0	77
Bowie Police Department	UCR	0	1	12	20	18	124	8	183
Frederick County Sheriff's Office	UCR	2	10	12	154	45	344	10	577
Frederick Police Department	UCR	0	7	53	134	33	344	19	590
Greenbelt Police Department	UCR	2	1	9	27	26	57	12	134
Montgomery County Dept. of Police	NIBRS	15	67	432	390	595	1,939	159	3,597
<i>Gaithersburg Police Department*</i>	NIBRS	1	4	8	34	26	495	5	573
<i>Rockville City Police Department*</i>	NIBRS	0	3	16	23	36	100	4	182
Prince George's County Police Dept.	UCR	36	24	515	595	515	1,729	210	3,624
Takoma Park Police Department	UCR	0	1	14	16	18	24	8	81
Alexandria Police Department	NIBRS	1	17	60	82	71	613	44	888
Arlington County Police Department	NIBRS	1	10	65	77	53	766	42	1,014
City of Fairfax Police Department	NIBRS	0	0	3	7	5	107	4	126
Fairfax County Police Department	NIBRS	17	40	246	393	322	3,726	160	4,904
Falls Church City Police Department	NIBRS	0	0	2	2	5	86	2	97
Loudoun County Sheriff's Office	NIBRS	1	24	10	98	121	643	63	960
City of Manassas Police Department	NIBRS	2	5	24	40	32	102	9	214
Manassas Park Police Department	NIBRS	0	10	5	10	3	23	4	55
Prince William County Police Dept.	UCR	12	31	134	187	140	1,243	38	1,785
SUBTOTAL		193	358	2,389	4,108	2,430	13,433	948	23,859
ASSOCIATE DEPARTMENTS	REPORTING METHOD	HOMICIDE	RAPE	ROBBERY	AGG ASSAULT	BURGLARY	LARCENY	M/V THEFTS	TOTAL ARRESTS
Fauquier County Sheriff's Office	NIBRS	0	4	2	14	12	48	5	85
FBI Police	OTHER	0	0	0	0	0	0	0	0
Federal Protective Service	OTHER	0	1	0	2	0	4	0	7
M-NCPPC Police (Montgomery County)	UCR	0	2	15	0	9	4	0	30
M-NCPPC Police (Prince George's County)	UCR	0	1	9	12	2	7	0	31
Maryland State Police**	UCR	0	0	0	0	0	8	3	11
Metro Transit Police	NIBRS	0	1	168	74	0	58	37	338
Metro. Wash. Airports Authority Police	NIBRS	0	0	0	4	2	25	43	74
National Institutes of Health Police	UCR	0	0	0	2	0	3	0	5
Naval Criminal Investigative Service	OTHER	1	22	0	9	2	7	0	41
Pentagon Force Protection Agency	OTHER	0	0	0	1	0	0	0	1
U.S. Capitol Police	OTHER	0	0	1	2	0	0	0	3
U.S. Park Police	UCR	0	7	7	45	7	7	3	76
Virginia State Police (Div. 7)	NIBRS	0	0	0	0	0	9	1	10
SUBTOTAL		1	38	202	165	34	180	92	712
GRAND TOTAL		194	396	2,591	4,273	2,464	13,613	1,040	24,571



Part 1 Crimes by Department: 2010

Washington, D.C.

DISTRICT OF COLUMBIA-MPD				
	2010	2009	INC/DEC	%
HOMICIDE	131	143	-12	-8%
RAPE	184	150	34	23%
ROBBERY	3,914	3,998	-84	-2%
AGG ASSAULT	3,238	3,295	-57	-2%
BURGLARY	4,224	3,696	528	14%
LARCENY	18,050	18,012	38	0%
M/V THEFTS	4,864	5,299	-435	-8%
Total Part I	34,605	34,593	12	0%

FREDERICK CO. SHERIFF				
	2010	2009	INC/DEC	%
HOMICIDE	2	4	-2	-50%
RAPE	15	10	5	50%
ROBBERY	28	14	14	100%
AGG ASSAULT	162	162	0	0%
BURGLARY	271	254	17	7%
LARCENY	1,224	1,113	111	10%
M/V THEFTS	66	47	19	40%
Total Part I	1,768	1,604	164	10%

Maryland

BLADENSBURG P.D.				
	2010	2009	INC/DEC	%
HOMICIDE	1	1	0	0%
RAPE	1	2	-1	-50%
ROBBERY	38	48	-10	-21%
AGG ASSAULT	87	38	49	129%
BURGLARY	123	101	22	22%
LARCENY	279	262	17	6%
M/V THEFTS	113	123	-10	-8%
Total Part I	642	575	67	12%

FREDERICK P.D.				
	2010	2009	INC/DEC	%
HOMICIDE	2	1	1	100%
RAPE	16	18	-2	-11%
ROBBERY	162	150	12	8%
AGG ASSAULT	274	345	-71	-21%
BURGLARY	262	299	-37	-12%
LARCENY	1,363	1,386	-23	-2%
M/V THEFTS	87	101	-14	-14%
Total Part I	2,166	2,300	-134	-6%

BOWIE P.D.				
	2010	2009	INC/DEC	%
HOMICIDE	2	0	2	0%
RAPE	2	4	-2	-50%
ROBBERY	57	65	-8	-12%
AGG ASSAULT	45	56	-11	-20%
BURGLARY	212	254	-42	-17%
LARCENY	716	740	-24	-3%
M/V THEFTS	116	106	10	9%
Total Part I	1,150	1,225	-75	-6%

GAITHERSBURG P.D.				
	2010	2009	INC/DEC	%
HOMICIDE	1	1	0	0%
RAPE	11	17	-6	-35%
ROBBERY	64	78	-14	-18%
AGG ASSAULT	73	92	-19	-21%
BURGLARY	203	181	22	12%
LARCENY	1,533	1,950	-417	-21%
M/V THEFTS	86	112	-26	-23%
Total Part I	1,971	2,431	-460	-19%

GREENBELT P.D.				
	2010	2009	INC/DEC	%
HOMICIDE	2	0	2	0%
RAPE	11	8	3	38%
ROBBERY	106	127	-21	-17%
AGG ASSAULT	66	60	6	10%
BURGLARY	221	212	9	4%
LARCENY	761	823	-62	-8%
M/V THEFTS	133	166	-33	-20%
Total Part I	1,300	1,396	-96	-7%

MONTGOMERY COUNTY P.D.

	2010	2009	INC/DEC	%
HOMICIDE	17	13	4	31%
RAPE	119	124	-5	-4%
ROBBERY	911	992	-81	-8%
AGG ASSAULT	553	904	-351	-39%
BURGLARY	3,323	3,011	312	10%
LARCENY	15,261	18,356	-3,095	-17%
M/V THEFTS	1,455	1,732	-277	-16%
Total Part I	21,639	25,132	-3,493	-14%

PRINCE GEORGE'S COUNTY P.D.

	2010	2009	INC/DEC	%
HOMICIDE	82	86	-4	-5%
RAPE	169	197	-28	-14%
ROBBERY	2,462	2,634	-172	-7%
AGG ASSAULT	2,219	2,421	-202	-8%
BURGLARY	6,399	6,707	-308	-5%
LARCENY	16,234	16,894	-660	-4%
M/V THEFTS	5,597	6,046	-449	-7%
Total Part I	33,162	34,985	-1,823	-5%

ROCKVILLE CITY P.D.

	2010	2009	INC/DEC	%
HOMICIDE	0	1	-1	-100%
RAPE	10	8	2	25%
ROBBERY	69	61	8	13%
AGG ASSAULT	41	76	-35	-46%
BURGLARY	239	183	56	31%
LARCENY	1,082	1,094	-12	-1%
M/V THEFTS	66	89	-23	-26%
Total Part I	1,507	1,512	-5	0%

TAKOMA PARK P.D.

	2010	2009	INC/DEC	%
HOMICIDE	0	0	0	0%
RAPE	1	5	-4	-80%
ROBBERY	48	54	-6	-11%
AGG ASSAULT	26	45	-19	-42%
BURGLARY	150	112	38	34%
LARCENY	364	470	-106	-23%
M/V THEFTS	63	78	-15	-19%
Total Part I	652	764	-112	-15%



Part 1 Crimes by Department: 2010

Virginia

ALEXANDRIA P.D.				
	2010	2009	INC/DEC	%
HOMICIDE	2	5	-3	-60%
RAPE	20	15	5	33%
ROBBERY	125	143	-18	-13%
AGG ASSAULT	125	115	10	9%
BURGLARY	310	325	-15	-5%
LARCENY	2,805	2,755	50	2%
M/V THEFTS	282	344	-62	-18%
Total Part I	3,669	3,702	-33	-1%

FAIRFAX COUNTY P.D.				
	2010	2009	INC/DEC	%
HOMICIDE	16	14	2	14%
RAPE	74	105	-31	-30%
ROBBERY	394	386	8	2%
AGG ASSAULT*	450	309	141	46%
BURGLARY	1,211	1,385	-174	-13%
LARCENY	14,345	15,643	-1,298	-8%
M/V THEFTS	963	1,096	-133	-12%
Total Part I	17,453	18,938	-1,485	-8%

ARLINGTON COUNTY P.D.				
	2010	2009	INC/DEC	%
HOMICIDE	1	2	-1	-50%
RAPE	24	15	9	60%
ROBBERY	143	149	-6	-4%
AGG ASSAULT	142	145	-3	-2%
BURGLARY	307	319	-12	-4%
LARCENY	3,942	3,923	19	0%
M/V THEFTS	211	297	-86	-29%
Total Part I	4,770	4,850	-80	-2%

FALLS CHURCH CITY P.D.				
	2010	2009	INC/DEC	%
HOMICIDE	0	0	0	0%
RAPE	1	3	-2	-67%
ROBBERY	6	6	0	0%
AGG ASSAULT	6	7	-1	-14%
BURGLARY	11	8	3	38%
LARCENY	268	285	-17	-6%
M/V THEFTS	21	19	2	11%
Total Part I	313	328	-15	-5%

CITY OF FAIRFAX P.D.				
	2010	2009	INC/DEC	%
HOMICIDE	0	0	0	0%
RAPE	3	2	1	50%
ROBBERY	10	14	-4	-29%
AGG ASSAULT	13	11	2	18%
BURGLARY	26	33	-7	-21%
LARCENY	507	588	-81	-14%
M/V THEFTS	30	22	8	36%
Total Part I	589	670	-81	-12%

LOUDOUN COUNTY SHERIFF				
	2010	2009	INC/DEC	%
HOMICIDE	1	3	-2	-67%
RAPE	46	43	3	7%
ROBBERY	39	39	0	0%
AGG ASSAULT	114	177	-63	-36%
BURGLARY	319	330	-11	-3%
LARCENY	2,442	2,611	-169	-6%
M/V THEFTS	145	163	-18	-11%
Total Part I	3,106	3,366	-260	-8%

CITY OF MANASSAS P.D.				
	2010	2009	INC/DEC	%
HOMICIDE	1	2	-1	-50%
RAPE	16	17	-1	-6%
ROBBERY	51	56	-5	-9%
AGG ASSAULT	50	82	-32	-39%
BURGLARY	122	156	-34	-22%
LARCENY	785	836	-51	-6%
M/V THEFTS	77	99	-22	-22%
Total Part I	1,102	1,248	-146	-12%

PRINCE WILLIAM COUNTY P.D.				
	2010	2009	INC/DEC	%
HOMICIDE	8	10	-2	-20%
RAPE	53	57	-4	-7%
ROBBERY	221	255	-34	-13%
AGG ASSAULT	224	216	8	4%
BURGLARY	971	984	-13	-1%
LARCENY	5,752	5,634	118	2%
M/V THEFTS	428	493	-65	-13%
Total Part I	7,657	7,649	8	0%

MANASSAS PARK P.D.				
	2010	2009	INC/DEC	%
HOMICIDE	0	0	0	0%
RAPE	7	2	5	250%
ROBBERY	7	5	2	40%
AGG ASSAULT	4	7	-3	-43%
BURGLARY	15	16	-1	-6%
LARCENY	184	193	-9	-5%
M/V THEFTS	14	20	-6	-30%
Total Part I	231	243	-12	-5%



During 2010, the Fairfax County Police completed full implementation of a new and upgraded Computer-Aided Dispatch (CAD) and Records Management System (RMS). Along with this transition, the Fairfax County Police changed their statistical reporting methodology from UCR to NIBRS. As a result, the number of incidents of Aggravated Assault seems to have increased significantly. However, this apparent increase is misleading for the following reasons:

- Under the prior UCR reporting method, Aggravated Assault was often a lesser-included offense of a robbery or rape investigation, and as such, tended to be under-counted as a separate category.
- In the transition to NIBRS reporting, FCPD staff found that internal definitions of Aggravated Assault for report categorization were inconsistent with NIBRS definitions. Internal protocols were updated to reflect NIBRS definitions, resulting in many more cases being categorized as Aggravated Assault in 2010 than was previously the case. Going back to 2009 and applying the same definitions, FCPD staff determined that the true number of Aggravated Assaults in both 2009 and 2010 were nearly the same.

Calls for Service & Authorized Strength

COG DEPARTMENT	CALLS	SWORN	CIVILIAN
D.C. Metropolitan Police	597,153	3,924	533
Bladensburg	17,353	19	6
Bowie Police Department	25,711	48	6
Frederick County Sheriff's Office	99,047	173	64
Frederick Police Department	79,210	138	45
Greenbelt Police Department	47,313	54	15
Montgomery County Dept. of Police	273,259	1,146	541
Gaithersburg Police Department	31,969	54	5
Rockville City Police Department	34,445	57	33
Prince George's County Police Dept.	891,614	1,786	501
Takoma Park Police Department	17,950	42	13
Alexandria Police Department	51,182	307	139
Arlington County Police Department	89,023	361	101
City of Fairfax Police Department	13,764	66	18
Fairfax County Police Department ¹	466,745	1,329	326
Falls Church City Police Department	26,163	33	15
Loudoun County Sheriff's Office	203,269	330	110
City of Manassas Police Department	54,609	92	26
Manassas Park Police Department	22,351	32	11
Prince William County Police Dept.	219,765	558	181
SUBTOTAL	3,261,895	10,549	2,689
ASSOCIATE DEPARTMENTS			
Fauquier County Sheriff's Office	57,208	115	16
FBI-Police	894	150	1
Federal Protective Service	4,158	143	32
M-NCPPC Police (Montgomery County)	82,097	92	23
M-NCPPC Police (Prince George's County)	91,063	103	24
Metro Transit Police	59,711	449	230
Metro. Wash. Airports Authority Police	66,462	222	97
National Institutes of Health Police	21,989	97	26
Naval Criminal Investigative Service	N/A	22	N/A
Pentagon Force Protection Agency	5,698	817	26
U.S. Capitol Police	83,212	1,700	412
U.S. Park Police	44,967	649	114
Virginia State Police (Div. 7)	167,084	250	55
SUBTOTAL	684,543	4,809	1,056
GRAND TOTAL	3,946,438	15,358	3,745

¹The new Fairfax County CAD system and RMS implemented in 2010 is much more robust and is able to capture and aggregate more data types than the old system. FCPD staff are confident that the 2010 number is more reflective of the actual CFS workload than that which was reported in prior years.



AIRFAX COUNTY
FIRE AND RESCUE

POLICE

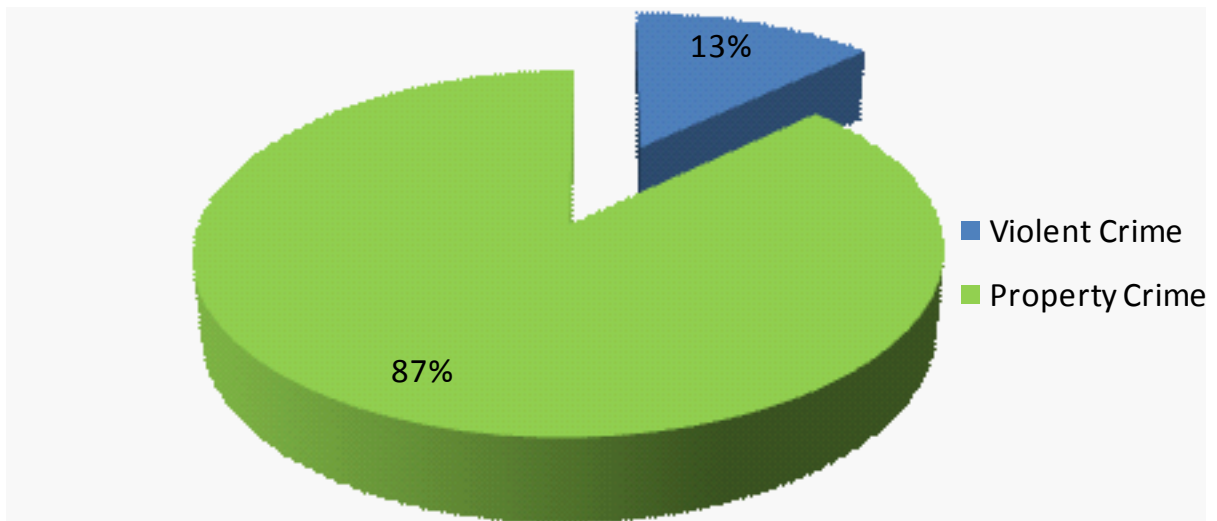
2010

Recommendations

from the COG Police Chiefs Committee

In order to continue making the metropolitan area a safe and livable community for residents and visitors, collaboration and coordination between law enforcement agencies on a regional level will be critical to continued reductions in major crimes. Not only will departments continue to expand current technological resources to prevent and detect crime, but they will also look to become more technologically savvy, finding new ways to engage the public and other community partners through social media and mobile applications for smart phones. Furthermore, as police departments continue to feel the effects of the recession, more will employ intelligence-led policing strategies to utilize limited resources more effectively. Such an approach will allow for strategic prioritization of individuals, locations, and operations that promise the greatest results and best chances for successful outcomes.

2010 Violent Crime v. Property Crime (Total Part I Offenses = 135,974)





How You Can Help

Always keep your valuables out of plain sight and lock your vehicle, even in your own driveway. Never leave your keys in the car.

Make your home look occupied; leave the lights on or the television going when you go out. If you are going to be away for a length of time, connect some lamps to automatic timers to turn them on in the evening and off during the day. Keep your garage door closed and locked.

Never leave keys under doormats, flowerpots, mailboxes or other “secret” hiding places -- burglars know where to look for hidden keys.

Keep a detailed inventory of your valuable possessions, including a description of the items, date of purchase and original value, and serial numbers, and keep a copy in a safe place away from home -- this is a good precaution in case of fires or other disasters. Make a photographic or video record of valuable objects, heirlooms and antiques. Mark your valuables with your driver's license number with an engraver you can borrow from your precinct. Marked items are harder for a burglar to dispose of and easier for police to recover.

Get involved in your local neighborhood watch program, or volunteer at your local police department.

Follow your local police department through the available social media channels. They often release important safety information and tips that might be helpful to you.

If you see something, say something.

Members

of the COG Police Chiefs Committee



BUREAU OF ALCOHOL, TOBACCO,
FIREARMS AND EXPLOSIVES (ATF)
WASHINGTON FIELD DIVISION
Willie Brownlee, Acting Special Agent in Charge

CITY OF ALEXANDRIA POLICE
DEPARTMENT
Chief Earl L. Cook

ARLINGTON COUNTY POLICE
DEPARTMENT
Chief M. Douglas Scott

BLADENSBURG POLICE DEPARTMENT
Chief Charles L. Owens

CIA - SECURITY PROTECTIVE SERVICE
Chief Paul Dewey

DIA POLICE
Chief Drew Stathis

DRUG ENFORCEMENT AGENCY,
WASHINGTON FIELD OFFICE
Ava Cooper-Davis, Special Agent in Charge

CITY OF BOWIE POLICE
DEPARTMENT
Chief John Nesky

CITY OF FAIRFAX POLICE DEPARTMENT
Chief Richard Rappoport

FAIRFAX COUNTY POLICE DEPARTMENT
Chief David M. Rohrer

FALLS CHURCH CITY POLICE
DEPARTMENT
Chief Harry W. Reitze

FAUQUIER COUNTY SHERIFF'S OFFICE
Sheriff Charlie Ray Fox, Jr

FEDERAL BUREAU OF INVESTIGATIONS
POLICE
Unit Chief Derek Fuller

FEDERAL BUREAU OF INVESTIGATIONS,
WASHINGTON FIELD OFFICE
James McJunkin, Assistant Director in Charge

FEDERAL PROTECTIVE SERVICE NATIONAL
CAPITAL REGION
Mark Cranfill
Deputy Regional Director

CITY OF FREDERICK POLICE DEPARTMENT
Chief Kim C. Dine

FREDERICK COUNTY SHERIFF'S OFFICE
Sheriff Charles A. Jenkins

GAITHERSBURG POLICE DEPARTMENT
Chief Mark P. Sroka

GREENBELT POLICE DEPARTMENT
Chief James R. Craze

LOUDOUN COUNTY SHERIFF'S OFFICE
Sheriff Stephen O. Simpson

CITY OF MANASSAS POLICE DEPARTMENT
Chief Douglas W. Keen

MANASSAS PARK POLICE DEPARTMENT
Chief John C. Evans

MARYLAND DEPARTMENT OF NATURAL
RESOURCES POLICE
George F. Johnson IV
Superintendent

MARYLAND NATIONAL CAPITAL
PARK POLICE
Montgomery County Division
Chief Darien Manley

MARYLAND NATIONAL CAPITAL
PARK POLICE
Prince George's County Division
Chief Larry Brownlee

MARYLAND STATE POLICE DEPARTMENT
Terrence B. Sheridan
Superintendent

METRO TRANSIT POLICE DEPARTMENT
Chief Michael Taborn

METROPOLITAN POLICE DEPARTMENT
WASHINGTON DC
Chief Cathy Lanier

METROPOLITAN WASHINGTON
AIRPORTS AUTHORITY POLICE
Chief Stephen L. Holl

MILITARY DISTRICT OF WASHINGTON
Colonel Steven M. Lynch
Provost Marshal

MONTGOMERY COUNTY
DEPARTMENT OF POLICE
Chief J. Thomas Manger

NATIONAL INSTITUTES OF HEALTH POLICE
Chief Alvin Hinton

NAVAL CRIMINAL INVESTIGATIVE SERVICE
John Wagner
Special Agent in Charge

PENTAGON FORCE PROTECTION AGENCY
Chief Richard S. Keevill

PRINCE GEORGE'S COUNTY
POLICE DEPARTMENT
Acting Chief Mark Magaw

PRINCE WILLIAM COUNTY
POLICE DEPARTMENT
Chief Charlie T. Deane

ROCKVILLE CITY POLICE DEPARTMENT
Chief Terrance N. Treschuk

TAKOMA PARK POLICE DEPARTMENT
Chief Ronald A. Ricucci

U.S. CAPITOL POLICE
Chief Phillip D. Morse, Sr.

U.S. IMMIGRATION AND CUSTOMS
ENFORCEMENT
BALTIMORE FIELD OFFICE
William Winter, Special Agent in Charge

U.S. IMMIGRATION AND CUSTOMS
ENFORCEMENT
WASHINGTON FIELD OFFICE
John Torres, Special Agent in Charge

U.S. PARK POLICE
Chief Teresa Chambers

U.S. SECRET SERVICE
UNIFORMED DIVISION
Chief Kevin Simpson

U.S. SECRET SERVICE
WASHINGTON FIELD OFFICE
David Beach, Special Agent in Charge

VIRGINIA STATE POLICE - DIVISION 7
Commander David Russillo

Copyright © 2011 by the Metropolitan
Washington Council of Governments.

All rights reserved. No part of this report
may be reproduced in any form or by any
means without written permission of the
publisher.

MWCOG
777 North Capitol Street, NE, Suite 300
Washington, DC 20002-4290
(202) 962-3200
www.mwcog.org