

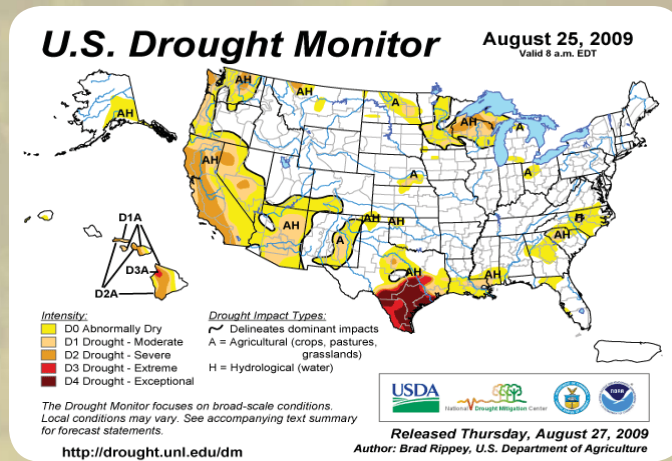
# Washington Metropolitan Region Drought and Water Supply Status and Outlook - September 2009

## Metropolitan Washington Water Supply and Drought Awareness Response Plan - Drought Stage - **NORMAL**

### RESERVOIR STATUS

September 2009 - 100% Full

The probability of releases this summer and fall from the Washington metropolitan area's back-up water supply reservoirs is below normal. There is a two to six percent conditional probability that Potomac flow will drop below 600 to 700 million gallons per day (MGD) at Little Falls through December 31 of this year; at these flow levels, water supply releases from Jennings Randolph and Little Seneca Reservoirs may occur. Jennings Randolph Reservoir is 100% full at this time. Source: ICPRB

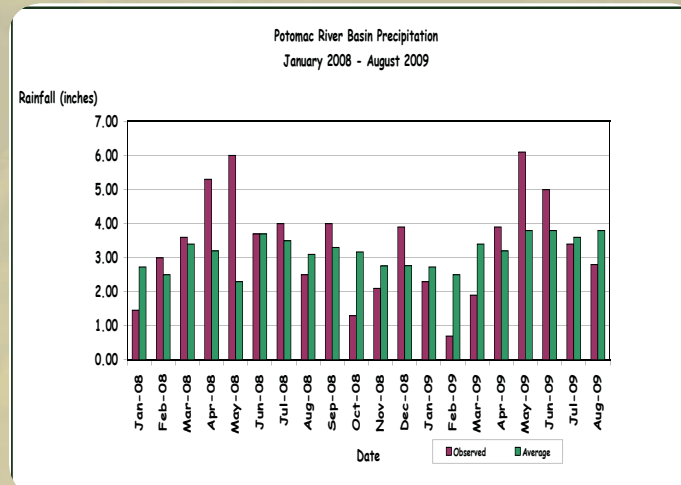


### POTOMAC BASIN DROUGHT MONITOR 100% NORMAL

The Drought Monitor released on August 25, 2009, indicates that 100% of the Potomac River Basin is normal. Regional experts will continue to monitor conditions and provide additional updates as needed.

### THREE MONTH PRECIPITATION OUTLOOK

The Climate Prediction Center of the National Weather Service produces three month precipitation forecasts for the United States. According to the October-November-December outlook, our region has an equal chance of above or below normal precipitation.



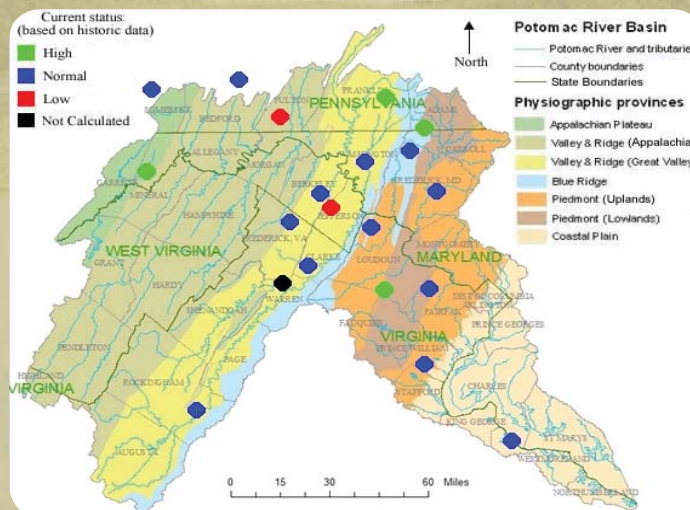
### POTOMAC BASIN PRECIPITATION DATA August 2009 - Below Normal

August was below average for the month - the Basin received 2.8 inches of rain, 1.0 inches below normal. Since January 2009 our region has received 26.10 inches of rain, 0.73 inches below normal.

### POTOMAC RIVER FLOW POINT OF ROCKS and LITTLE FALLS

Average

Streamflow levels varied throughout the month of August with below average flows from the 10th - 22nd. As of September 1st, streamflow levels are slightly above average at Little Falls and slightly below at Point of Rocks.



### GROUNDWATER STATUS September 2009 - Normal

As of September 1, 2009 most of the groundwater wells continue to report normal to high levels throughout the basin although two wells are now reporting low levels (one in West Virginia and the other in Pennsylvania). Eleven of the groundwater wells monitored reported normal levels and four were high (scattered throughout the basin).

### SEASONAL DROUGHT OUTLOOK - September 2009

The seasonal drought outlook released on August 20, 2009 indicates that our region should not experience a drought over the next few months.

If you have any questions, please contact Jim Shell at [jshell@mwkog.org](mailto:jshell@mwkog.org) or Christine Howard at [choward@mwkog.org](mailto:choward@mwkog.org)

