

UPDATE ON MODIFIED “EQUITY EMPHASIS AREAS”

for TPB’s Title VI/Environmental Justice Analysis

Sergio Ritacco
TPB Transportation Planner

Access for All Advisory Committee
February 23, 2017



Structure of Presentation

- Update the AFA since we last met
- TPB's action in March on the modified Equity Emphasis Areas



What is Title VI and Environmental Justice (EJ)?

- **Title VI Law:** Prohibits discrimination based on **race and national origin**
- **Environmental Justice Executive Order:** Requires pro-active approach to ensure no disproportionate impact on **low-income and minority** populations

EPA defines Environmental Justice as...

“the fair treatment and meaningful involvement of all people regardless of race, color, national origin, or income with respect to the development, implementation, and enforcement oflaws, regulations, and policies.”

Source: www.epa.gov/environmentaljustice



Requirement and Proposed Analysis

Federal Requirement: The TPB must examine the Constrained Long-Range Transportation Plan for any disproportionately high and adverse impacts on low-income and minority populations.

Proposed Enhanced Analysis includes:

1. Identification of concentrations of low-income and minority populations (“Equity Emphasis Areas”, previously “Communities of Concern”)
2. Multiple accessibility and mobility measures



Since October - New Name “Equity Emphasis Areas”

- Feedback from TPB Technical Committee, AFA, and CAC: “Communities of Concern” has a negative connotation and does not convey the intent of the analysis.
- Revised to **“Equity Emphasis Areas”** (EEA): Input from these committees and TPB found this term more inclusive and descriptive of the intent of TPB’s analysis.



Since October - Proposed Modification to the Methodology for the Map

- During the Board's comment period and at the January TPB meeting an anomaly in the results was identified and staff worked to re-examine the EEAs.



Unintended Anomaly

- Census tracts with high concentrations of two minority population groups but with **lower than regional average** concentrations of low income populations were being identified as EEAs; while,
- Tracts with high concentrations of only one of three minority population with **higher than regional average** concentrations of low-income population were not being identified as EEAs.



Proposed Modification to the Methodology for the Map

- Revise second criteria to take into account areas with high concentrations of one or more minority population groups together with low income concentrations at or above the regional average.
- Still considers tracts with high concentrations of two or more minority population.

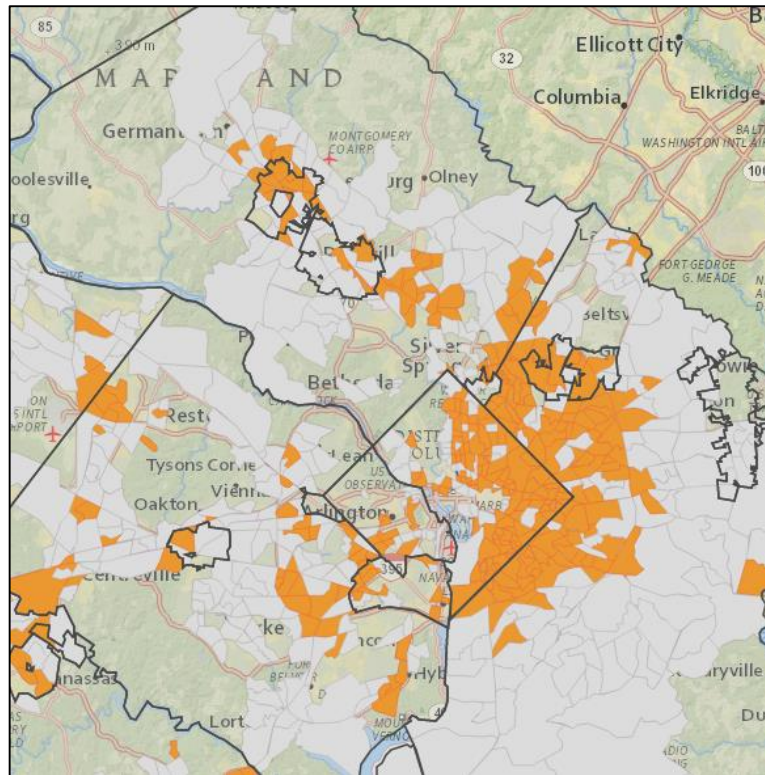


Equity Emphasis Areas

<https://gis.mwcog.org/webmaps/tpb/clrp/ej/>

Username: review

Password (case sensitive): draft.map



Right click on map to open hyperlink to interactive version



Next Steps

After TPB approval endorsing the Equity Emphasis Areas, TPB staff will:

- Revise Interactive Online Tool with additional data and make widely available (late March)
- Conduct the Title VI/EJ analysis of the 2016 CLRP (late March-May)
- Develop and review draft findings (May-June)
- Brief the TPB (June-July)
- Develop a report documenting methodology and findings (June-July)



Sergio Ritacco

Transportation Planner

(202) 962-3232

sritacco@mwkog.org

mwkog.org/TPB

Metropolitan Washington Council of Governments

777 North Capitol Street NE, Suite 300

Washington, DC 20002



National Capital Region
Transportation Planning Board