

# Complete and Green Streets



**DANNIELLE GLAROS**  
**CHIEF OF STAFF, COUNCILMAN ERIC OLSON**

**JIM WILSON**  
**DEPARTMENT OF PUBLIC WORKS AND**  
**TRANSPORTATION, PRINCE GEORGE'S COUNTY**



# What is a complete street?



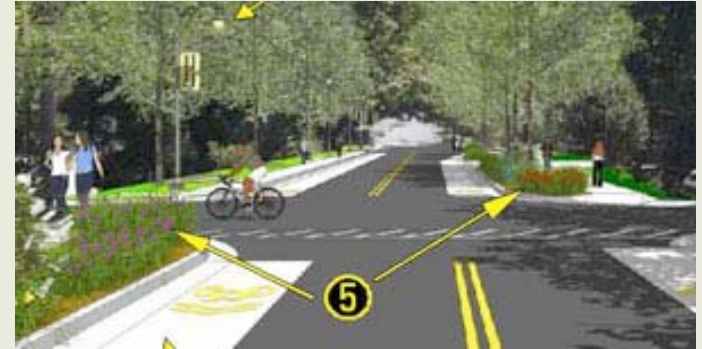
- ◆ Complete streets are streets designed and operated to enable safe access for all users
- ◆ Entire right-of-way is designed, constructed, operated, and maintained
- ◆ For more information: National Complete Streets Coalition, <http://www.smartgrowthamerica.org/complete-streets>



# What is a green street?



- ◆ Green streets manage stormwater runoff as a resource rather than a waste
- ◆ Green streets are landscaped streetside planters or swales that capture stormwater runoff and allow it to soak into the ground so soil and vegetation filter pollutants



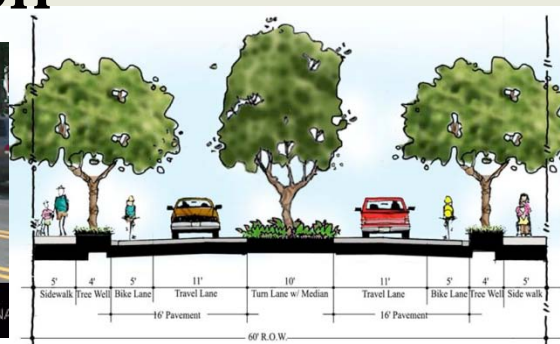
# Why?



- ◆ Create more livable communities and places
- ◆ Manage stormwater in an environmentally-friendly way
- ◆ Address TMDL and WIP
- ◆ Increase tree canopy
- ◆ Make it easier for people to walk, bike, and use public transportation



CHARLOTTE, NORTH CAROLINA





# Ager Road Green and Complete Street Project

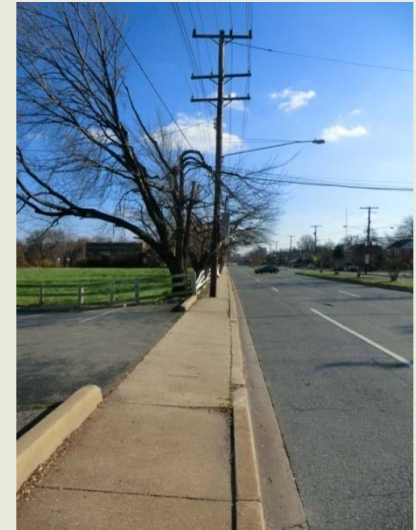


# Existing Conditions

## Sidewalk and Pedestrian Facilities



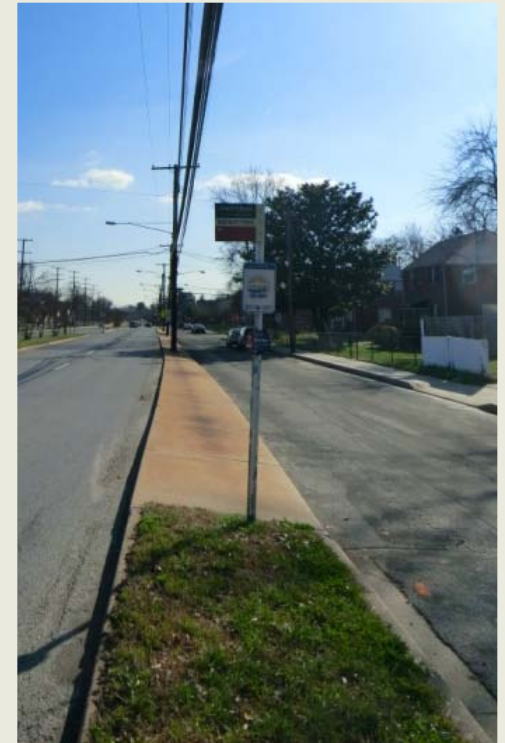
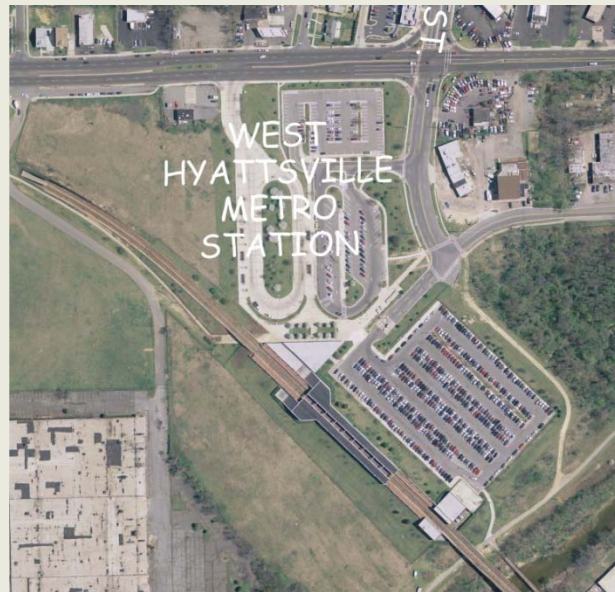
- ◆ **Narrow Sidewalk /Obstructions**
- ◆ **Not ADA Compliant**
- ◆ **Lack of Connectivity to Other Trails**



# Existing Conditions Transit Use



- ◆ Metro Bus
- ◆ Prince George's County TheBus
- ◆ Metro Station Access
- ◆ Bus Shelters



# Existing Conditions

## Storm Drainage



- ◆ To Sligo Creek and Northwest Branch with no Controls
- ◆ Numerous Inlets along Ager Road
- ◆ Areas with Surface Water Ponding



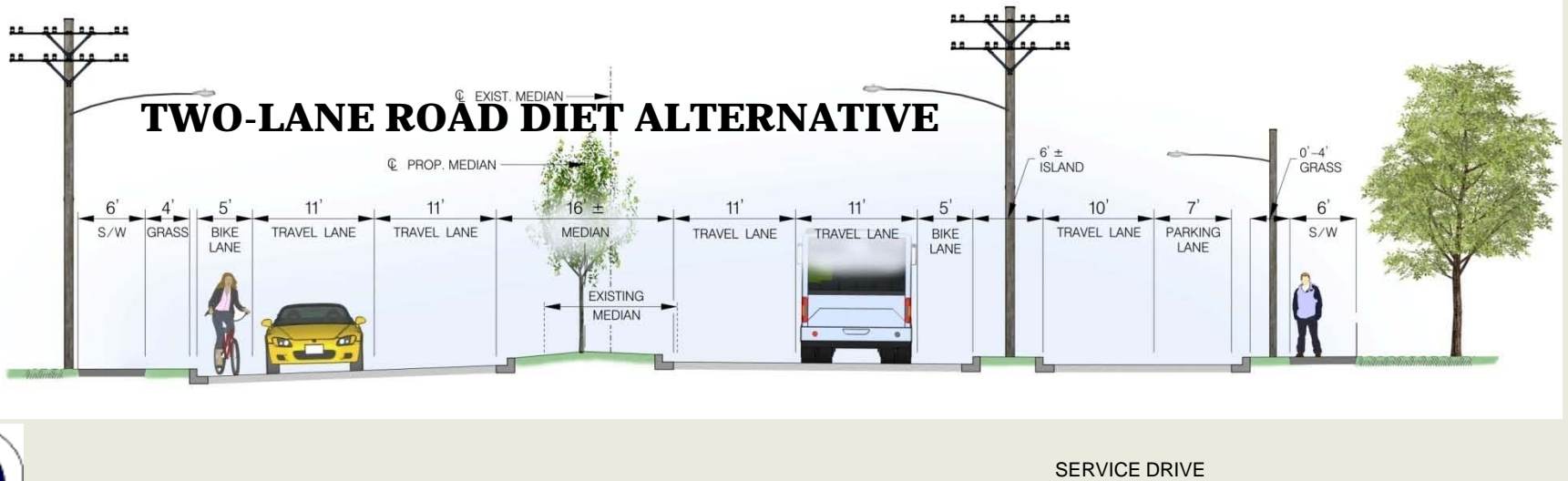
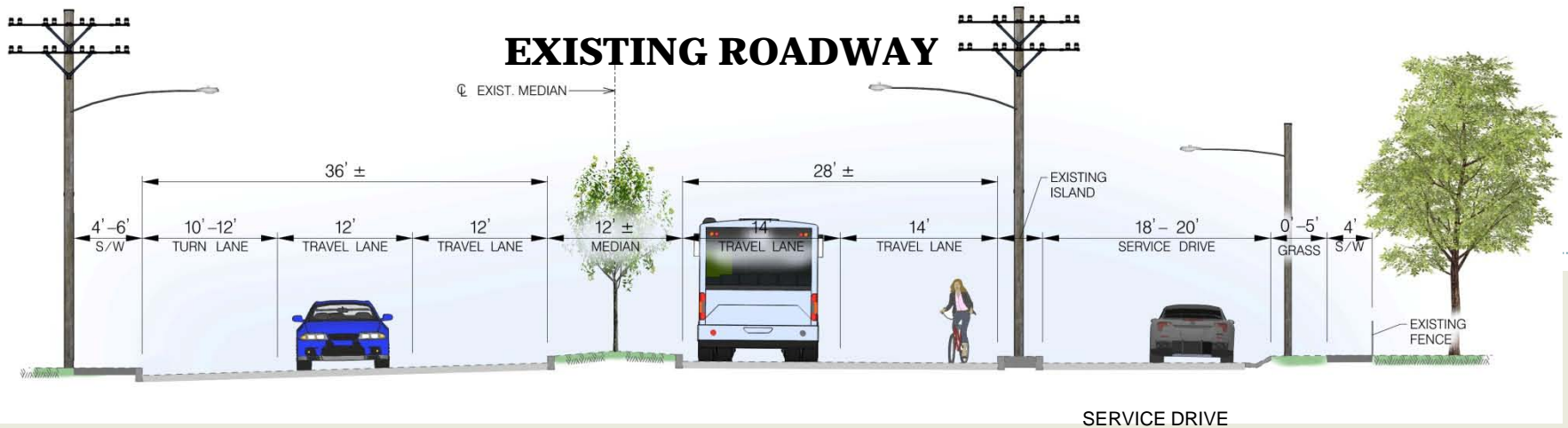




# Green/Complete Street Design Concept



# Green/Complete Street Design



# Green/Complete Street Design

## Enhance Pedestrian Facilities

- ◆ Install 6' Sidewalks Throughout
- ◆ Add ADA Ramps at All Locations
- ◆ Remove “Pince Points” at Utility Poles, Signs, etc.
- ◆ Complete Connections to Other Facilities

PROMOTE  
PEDESTRIAN  
ACCESS TO  
SCHOOL,  
CHURCHES, PARKS  
AND PUBLIC  
TRANSPORTATION

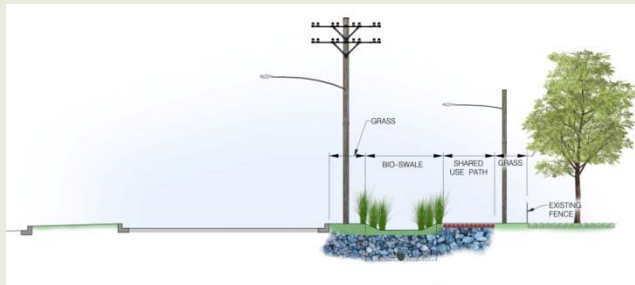
- Northwest Branch Trail
- Metro Station
- Hyattsville Metro Station



# Green Street Concepts

## Address TMDL Requirements Thru:

- ◆ Vegetated Swales
  - Bio-Swale and Bio-Filtration
  - Incorporate Into Median and Grass Buffer
- ◆ Open Sections



TYPICAL BIO-SWALE



# Green Street Concepts

Address TMDL Requirements Utilizing:

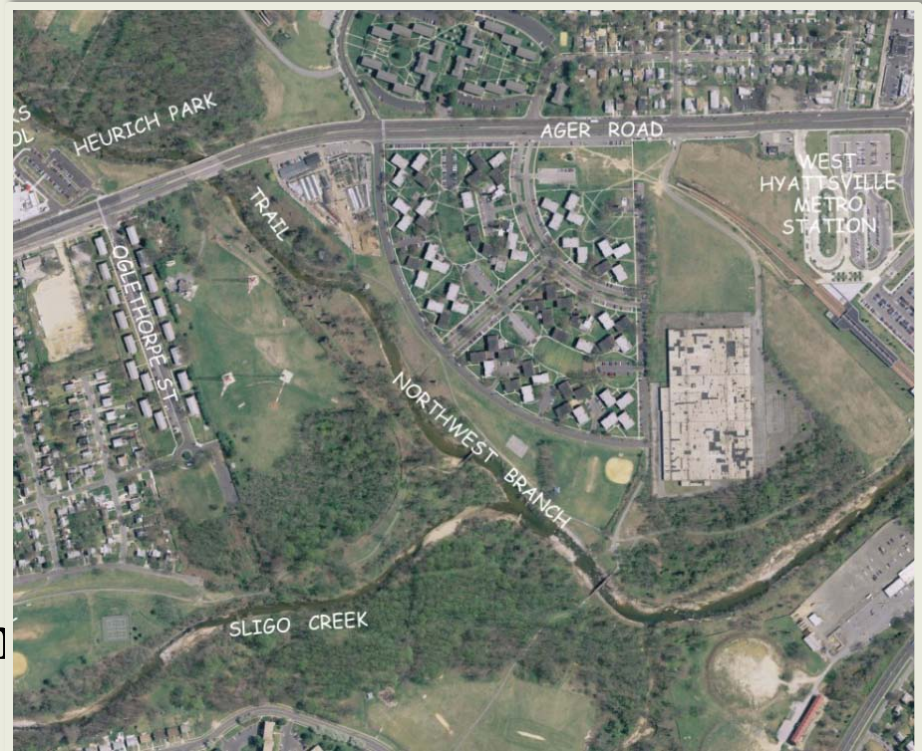
## ◆ Outfall Protection

- ◆ Restore Failing Outfalls
- ◆ Provide Coastal Plain Outfalls

## ◆ Stream Restoration

- Look for Opportunities Along Sligo Creek and Northwest Branch
- Riffle Grade Controls
- Stream Bank Stabilization

Using Natural Fiber Matting



# Legislation CB-83-2012



- ◆ **Complete Street** means a public street that safely and adequately accommodates motorized and non-motorized users, including pedestrians, bicycles, motor, freight, emergency and transit vehicles, in a manner appropriate to the function and context of the facility.
- ◆ **Green Street** means a street or road that safely and adequately accommodates and incorporates best management practices of environmental site design for addressing stormwater runoff, including using small scale stormwater management practices, nonstructural techniques, and better site planning to minimize the impact of road and sidewalk development on water resources.



# Legislation continued



## **SUBTITLE 23. ROADS AND SIDEWALKS.**

### **DIVISION 7. COMPLETE AND GREEN STREETS.**

#### **Sec. 23-615. Complete and Green Streets Policy.**

- ◆ The County hereby adopts a complete and green street policy and principles, consistent with the adopted Complete Street Policy by National Capital Region Transportation Planning Board and the National Complete Streets Coalition, as revised by the County Code.
- ◆ All planned County financed and approved road, sidewalk, trail and transit related construction and reconstruction projects shall include environmental site design and facilities for the combined use of motor, emergency and freight vehicles, transit, bicycles and pedestrians, except when cost shall be disproportionate to the projected need or when such facilities would be inappropriate due to the nature of the project, including the context and character of the surrounding built and natural environment of the neighborhood or area.
- ◆ The Department will review and revise, as deemed necessary by the Director, plans, manuals, policies, processes and the capital improvement program to foster the implementation of a complete and green street on public roadways projects, including privately built projects approved by the Department or on non-County projects funded in part or entirely by county funds.



# Conclusion and Contact Information



- Dannielle Glaros, [dmglaros@co.pg.md.us](mailto:dmglaros@co.pg.md.us), 301-952-3060
- Jim Wilson, [jdwilson@co.pg.md.us](mailto:jdwilson@co.pg.md.us), 301-883-5640

