

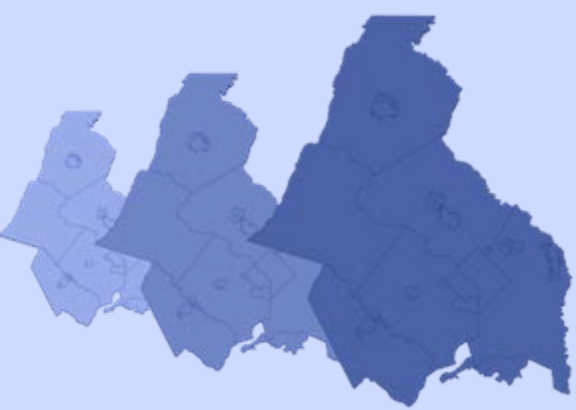
# **TPB SCENARIO STUDY**

## **Development of “CLRP Aspirations”: Land Use Component**

**Monica Bansal**  
**Department of Transportation Planning**

**Presentation to the TPB Scenario Study Task Force**

**June 18, 2008**



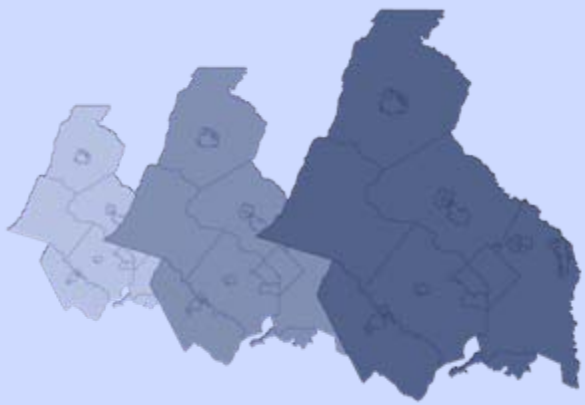
# Two New Scenarios

## What Would it Take?

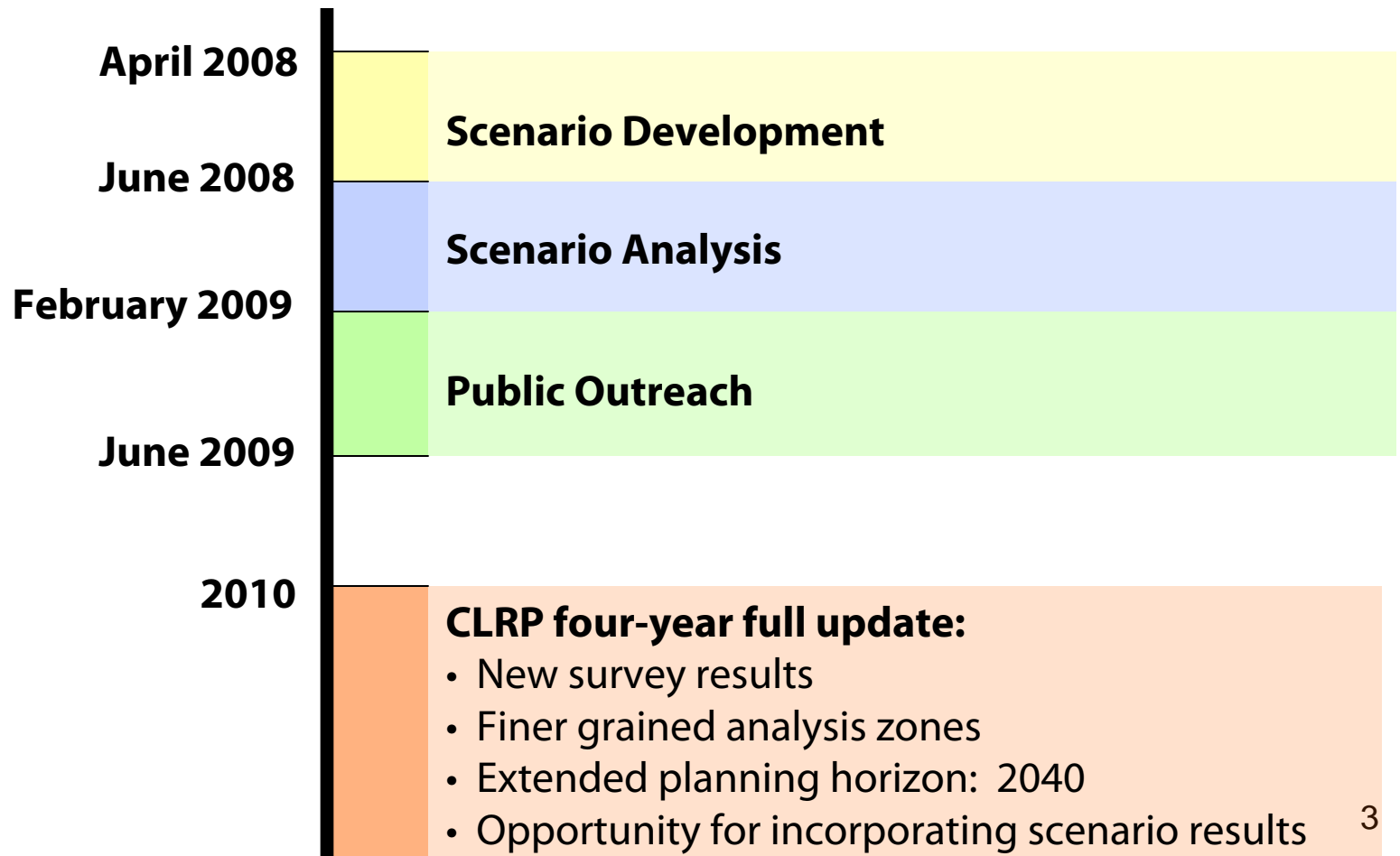
Starts with CO2 goals (80% below 2005 levels in 2050 and 20% reduction by 2020) and assess what scales and combinations of interventions will be necessary to achieve the goal.

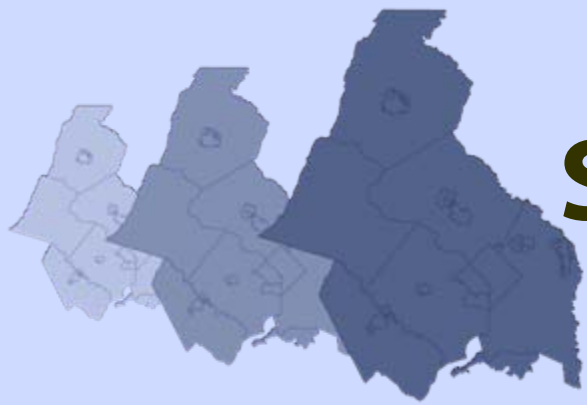
## CLRP Aspirations

Draws on past scenarios (5 transportation/land use scenarios and 2 value pricing scenarios) to provide an ambitious yet attainable vision of land use and transportation for the 2010 CLRP update.



# Schedule





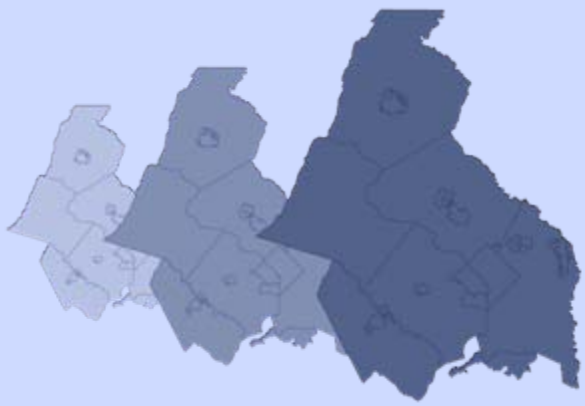
# Starting Point

## Baseline:

- Round 7.1 Cooperative Forecast
- 2007 CLRP

## Two primary criteria:

- Land use shifts “within reach” for inclusion in the COG Cooperative Forecast
- Transportation projects “within reach” financially through tax revenues, developer contributions, or pricing.



# Building the Scenario

**Goal:** To move jobs and housing closer together to create dense, accessible areas, and more efficient transportation systems

## Land Use Component

- First cut using previous scenarios to determine what receiving zones can absorb
- Seek review and refinement by planning directors



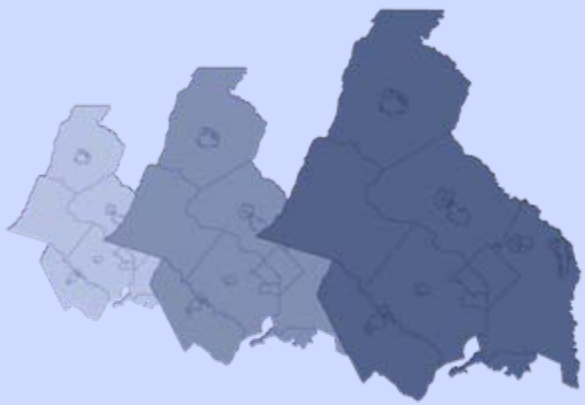
## Supportive Transit

- Use menu of transit options from past scenarios
- Connect activity centers
- Work with TPB Bus Subcommittee



## Pricing Options

- Address congestion through pricing of new and/or existing lanes
- Provide alternatives through enhanced transit



# Land Use Component

(Version 1)

## Step 1

**Assess Previous Scenarios (Households In, Jobs Out, More Households, TOD, Region Undivided) for:**

Growth shifts within TAZs

Goals and principles employed

ie: “Receiving” zones and “Donor” zones

## Step 2

**Assess what shifts in growth from donor zones to receiving zones is “within reach”**

Takes “maximum” shift across all past scenarios

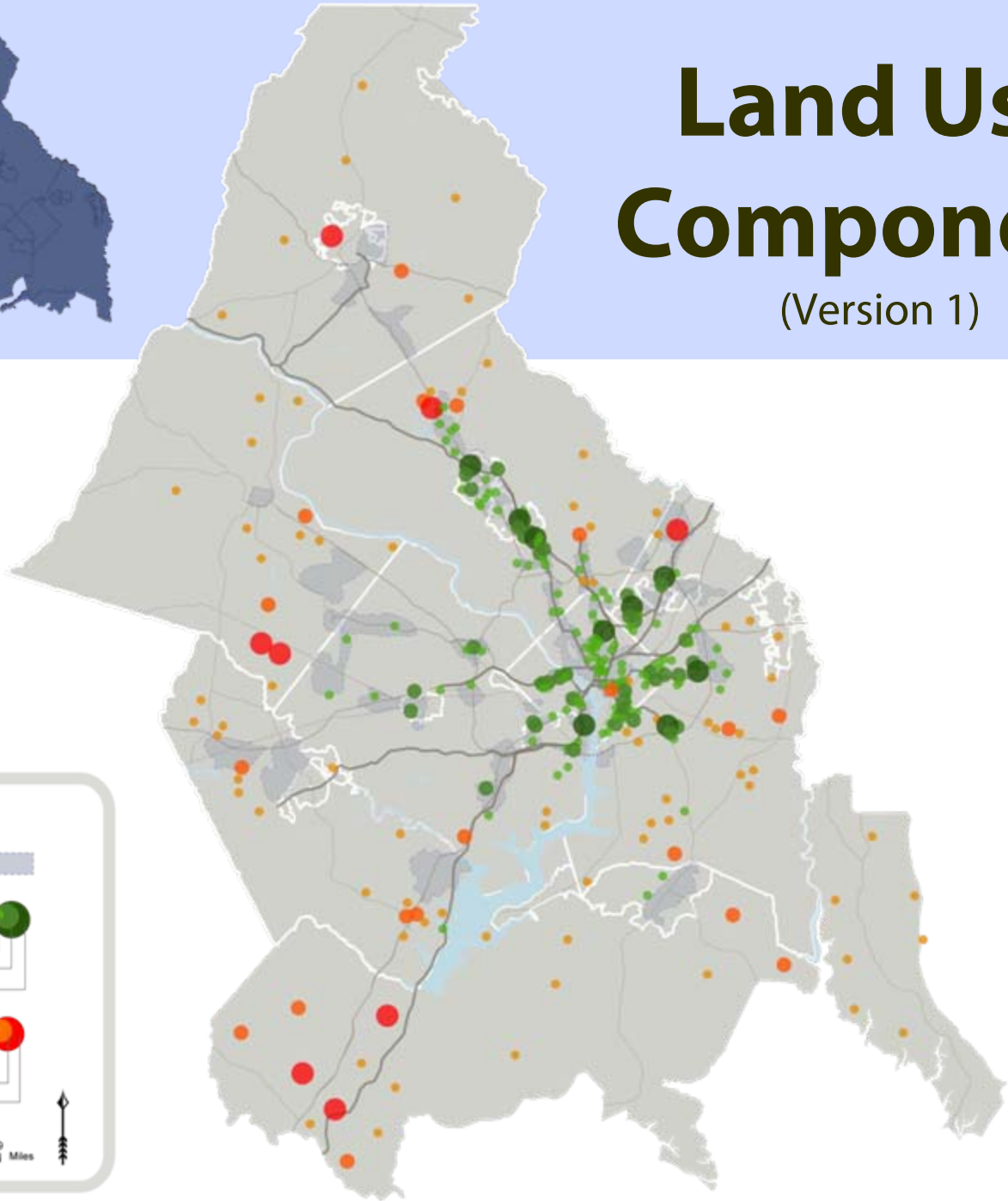
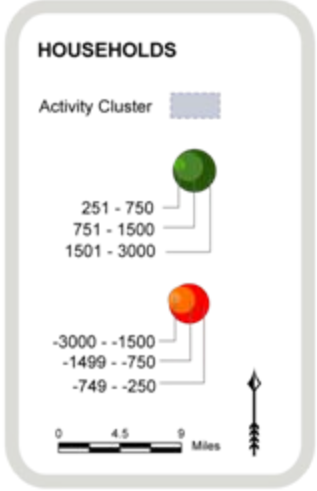
Under review by Planning Directors

Starting point for revision and refinement

# Land Use Component

(Version 1)

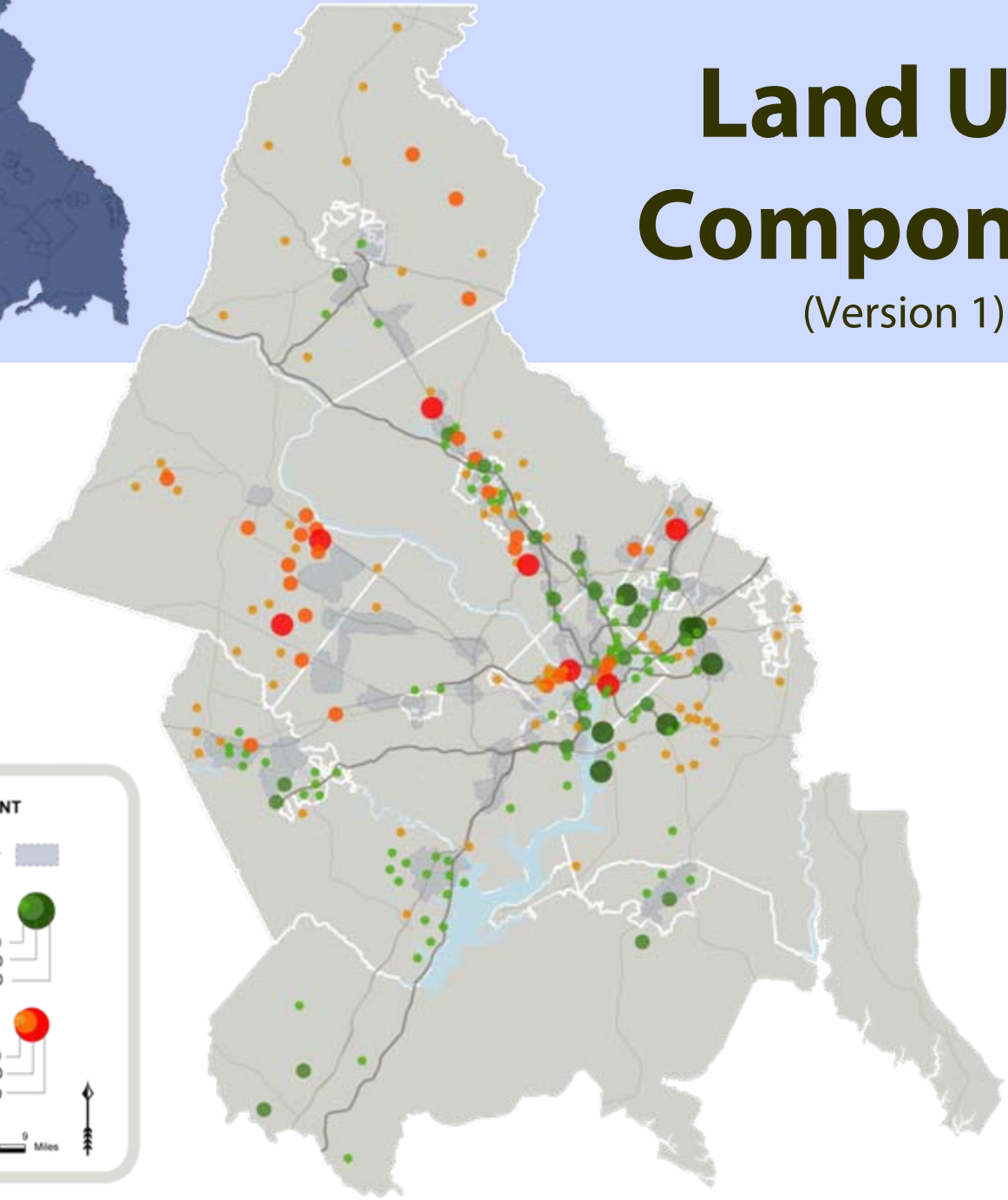
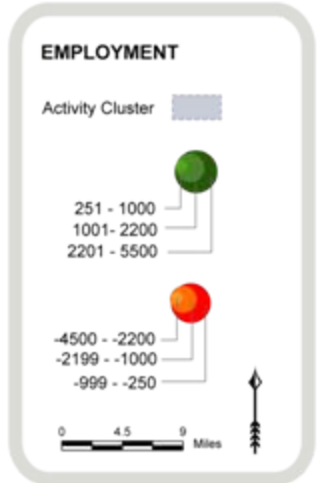
Households,  
Growth shifts  
2010-2030



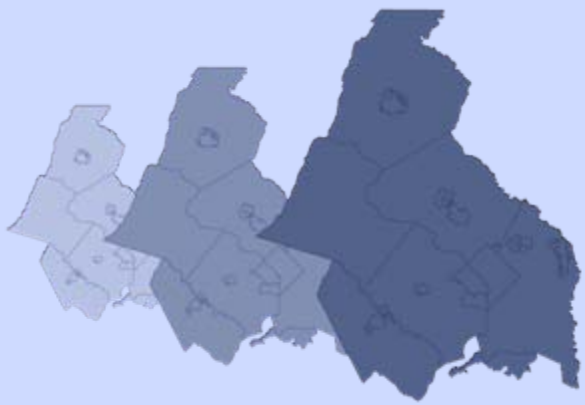
# Land Use Component

(Version 1)

Employment,  
Growth shifts  
2010-2030







# Next Steps

## **Review and refine initial land use component based on feedback from Planning Directors :**

Do the current land use shifts and transportation projects represent what is “within reach” or should they be more or less aggressive?

Present scenarios for detailed review by TPB Scenario Study Task Force at their July 16<sup>th</sup> meeting