

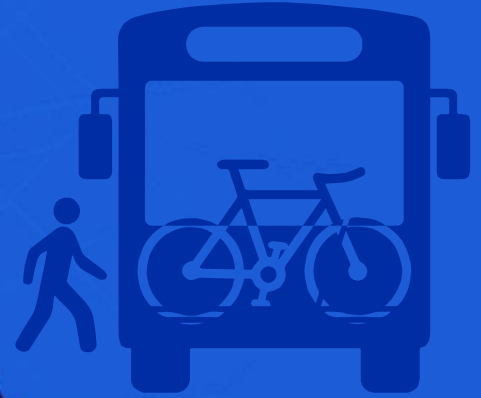


Prince George's County

On-Demand Transit Services



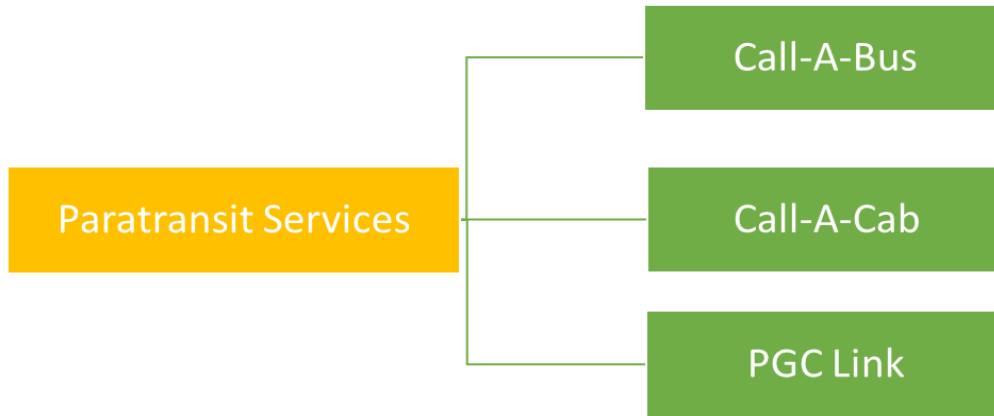
TPB – Regional Public Transportation Subcommittee



September 24, 2024



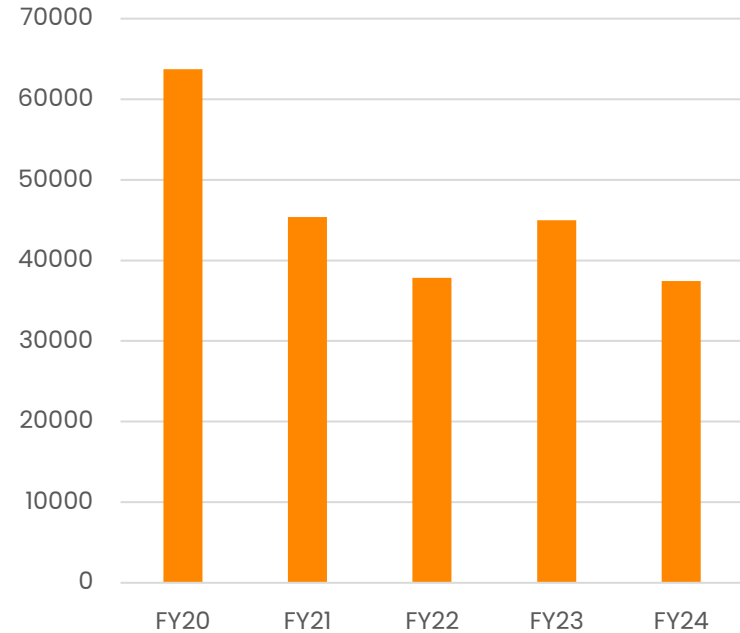
Paratransit/Alternative Services



Call-a-Bus

- ▶ **Call-a-Bus**
 - ▶ Supplemental paratransit service
 - ▶ Demand response – advance and same-day, curb-to-curb service
 - ▶ Service is available to all residents of County who are not served by or cannot use existing bus or rail services

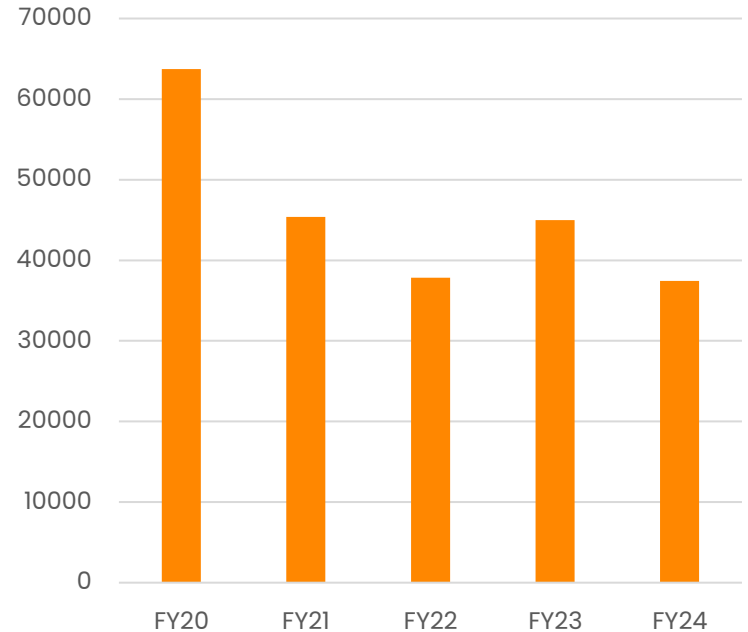
Call-A-Bus Ridership



Call-a-Cab

- ▶ **Call-a-Cab**
 - ▶ Subsidized transportation assistance program that provides mobility at a reduced cost for County seniors (age 60+) and/or County persons with disabilities.

Call-a-Cab Ridership



Microtransit (PGC Link Pilot)

Service Hours: 10:00 a.m. – 3:30 p.m., Monday through Friday

Current Service Area and Popular Destinations:

- ▶ Fort Washington Hospital, National Harbor, Harmony Hall, Tanger Outlets, Livingston Square, MGM Casino, Accokeek Branch Library and Accokeek Park & Ride.
- ▶ **Fare:** \$2 with the Transloc app. Cash, Tokens and SmarTrip cards are not accepted on PGC Link vehicles.

Next Steps

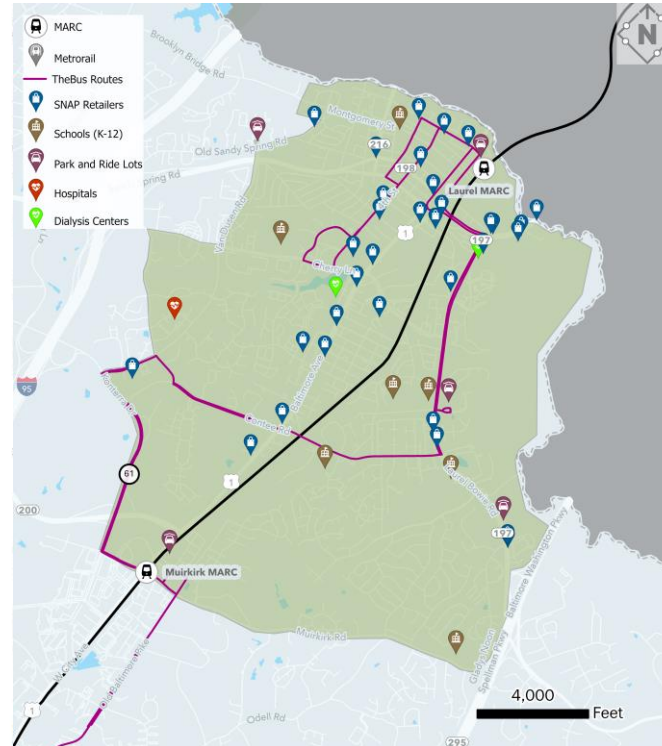
- ▶ Ongoing planning efforts to expand microtransit in the County



PGC Link – Laurel Zone

Laurel

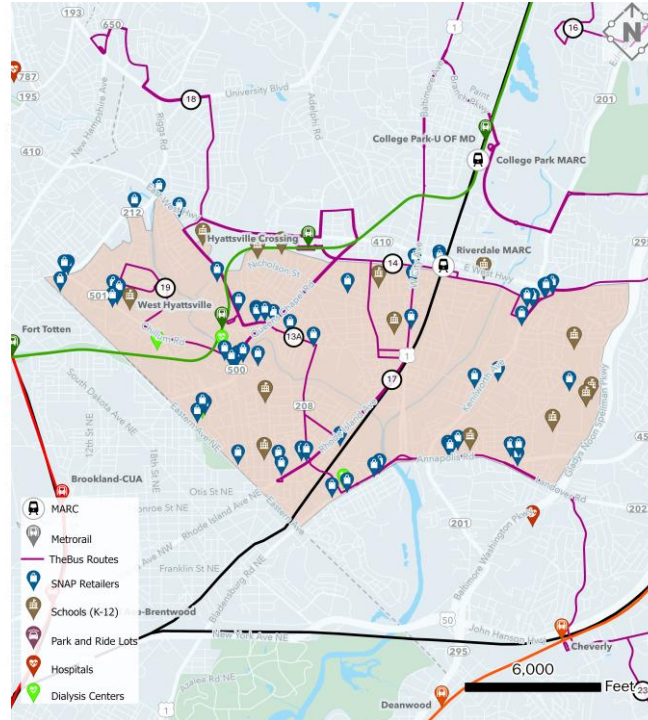
- 9.1 square miles
- Jobs: **15,120**
- Population: **49,107**
- Minority Population: **41,836**
- Low-income Population: **7,843**
- No-car Households: **1,486**
- Strongest microtransit use cases:
 - Internal circulation
 - First-/Last-mile
 - Hard-to-reach populations



PGC Link – Hyattsville Zone

Hyattsville

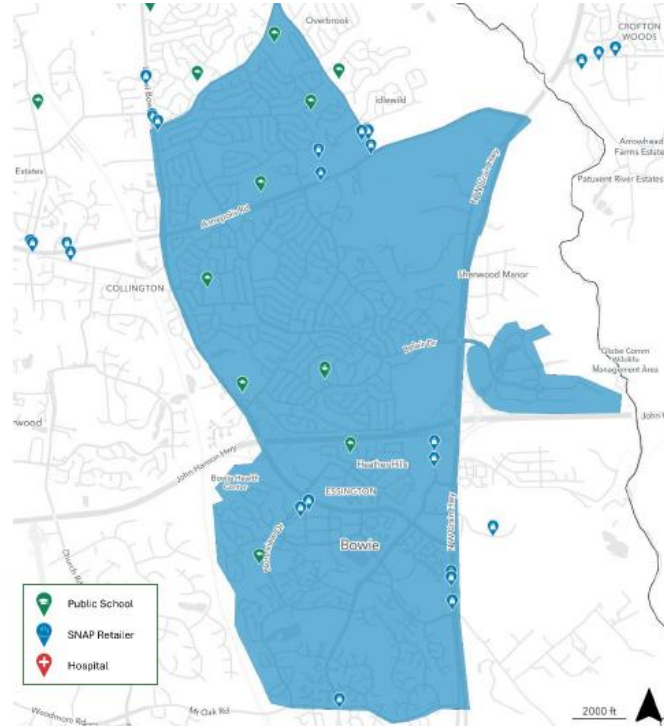
- 4.3 square miles
- Jobs: **6,413**
- Population: **40,395**
- Minority Population: **34,680**
- Low-income Population: **7,095**
- No-car Households: **2,808**
- Strongest microtransit use cases:
 - First/Last Mile
 - Transit-reliant populations
- Hyattsville is the highest-scoring zone in multiple use cases



PGC Link – Bowie Zone

Bowie

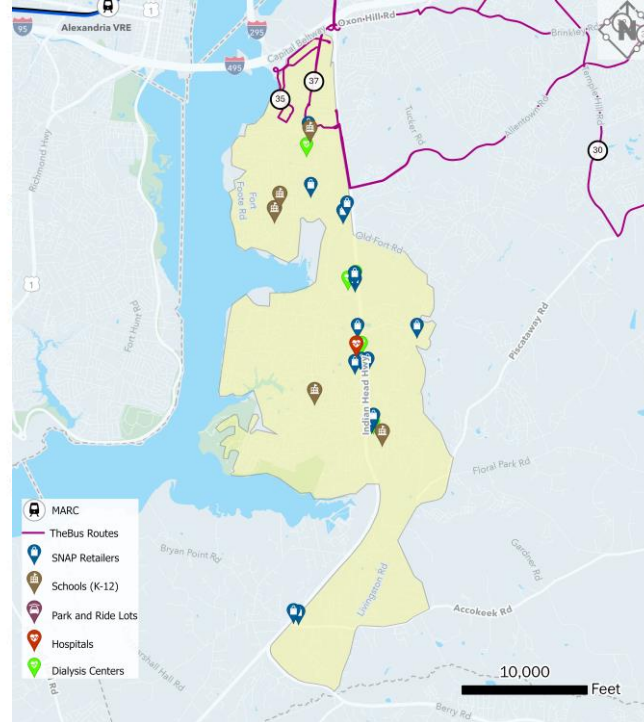
- 8.5 square miles
- Jobs: **1,762**
- Population: **28,139**
- Minority Population: **18,659**
- Low-income Population: **1,762**
- No-car Households: **419**
- Moderate scores in first-/last-mile use case



PGC Link – Ft. Washington/Accokeek

Fort Washington/ Accokeek

- 17.5 square miles
- Jobs: **5,273**
- Population: **32,905**
- Minority Population: **29,545**
- Low-income Population: **2,244**
- No-car Households: **199**
- Strongest microtransit use case:
Hard-to-reach areas



THANKS!

Dr. Efon Epanty
Chief of Planning and Innovation
Department of Public Works &
Transportation

Office of Transportation
(301) 883-5656

TransitVisionPlan@co.pg.md.us