




TREE EQUITY SCORE


A website banner for the Tree Equity Score tool. The background is a photograph of children playing on a large tree stump in front of a brick building. The banner includes logos for Tree Equity Score and American Forests, navigation buttons for Menu and Map, a search bar, and a main text message.

 **TREE EQUITY SCORE** |  **AMERICAN FORESTS**
- SINCE 1875 -

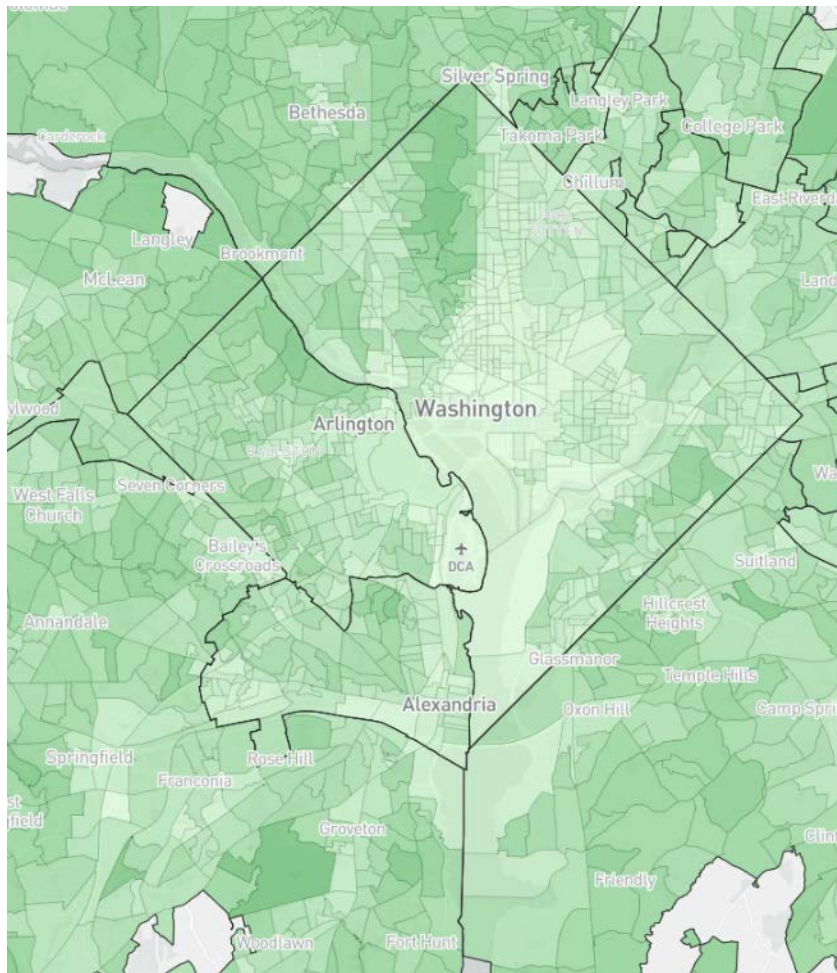
**Find your score and help create
Tree Equity in cities and towns
across America.**

[MENU](#) 

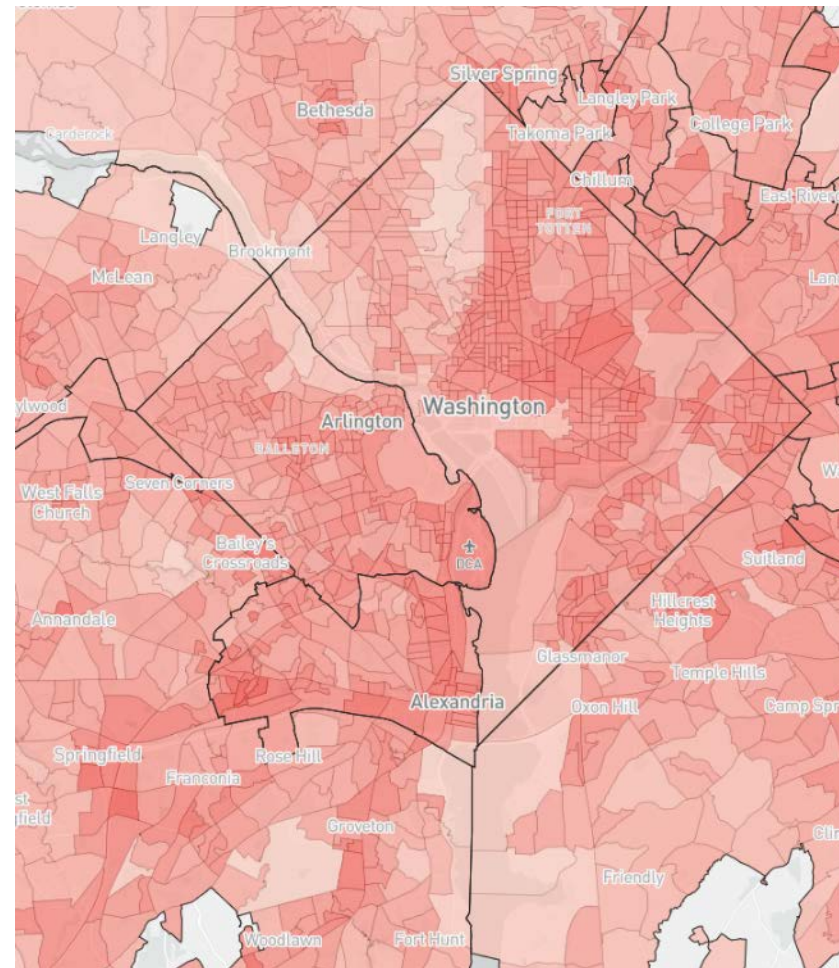
[MAP](#)

Search for your town 

TREE INEQUITY HAS CONSEQUENCES



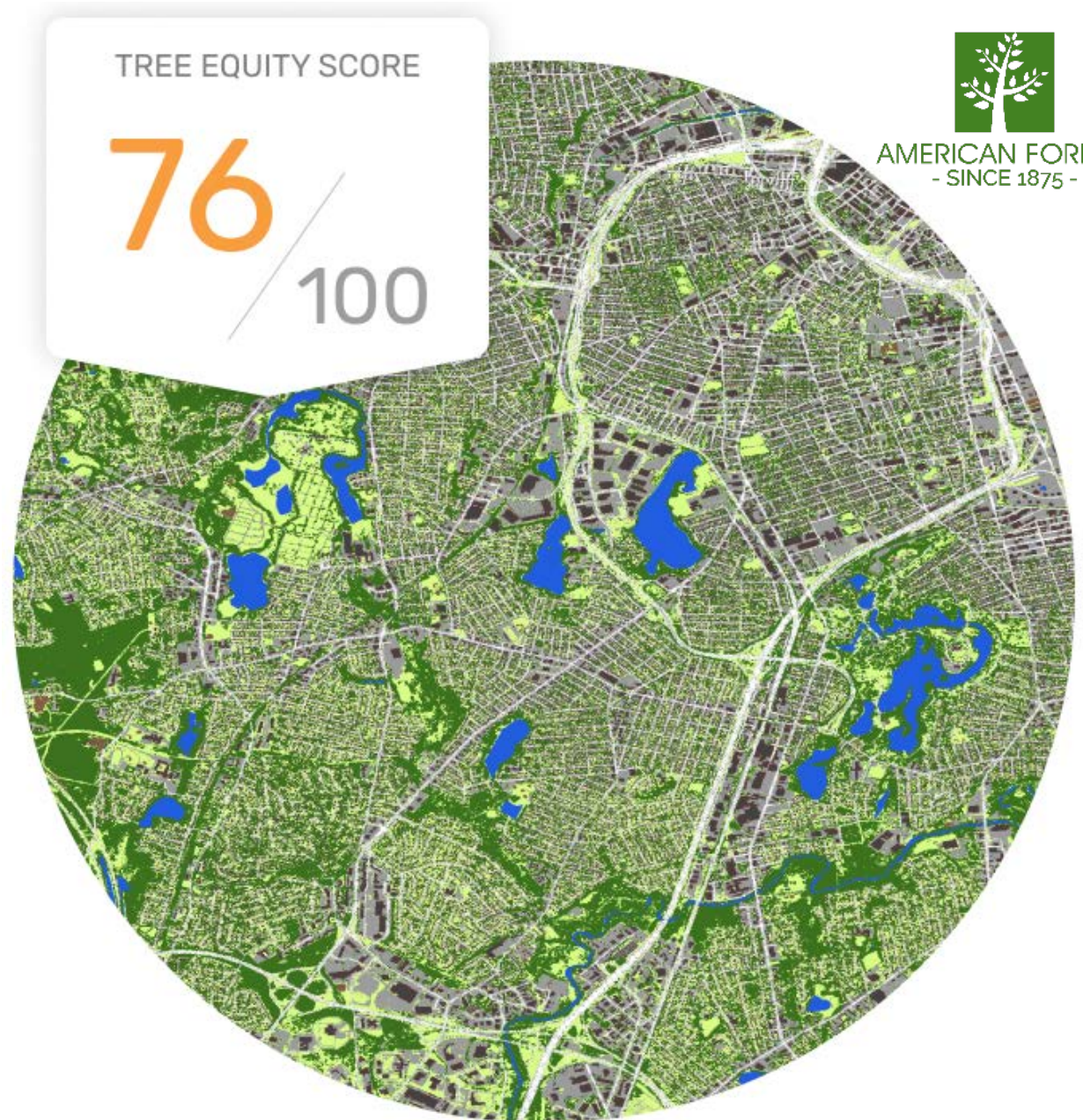
Tree Canopy



Temperature

TREE EQUITY SCORE

Tree Equity Score is a tool to measure how well a neighborhood or municipality is ensuring that the benefits of urban tree canopy are reaching low income communities, populations of color and other populations that are particularly susceptible to extreme heat and other conditions.



HOW IT WORKS



NEED: Calculating a Tree Canopy Gap

Baseline Target

BASED ON GENERALIZED
ECOREGION:

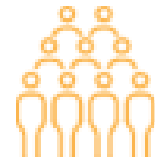
Forested: 40%

Grassland: 20%

Desert: 15%



**Existing tree
canopy**



**Population
density**

Density Adjustment

Population Density (ppl/km ²)	Target Canopy Adjustment factor
Very low (<2k)	1.2
Low (2k-4k)	1
Moderate (4k-8k)	0.8
High (>8k)	0.5



HOW IT WORKS



PRIORITY: Calculating the index



Income



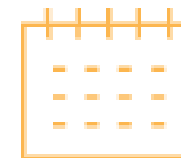
Employment



**Surface
temperature**



Race



Age



Health

Six equally weighted characteristics

HOW IT WORKS

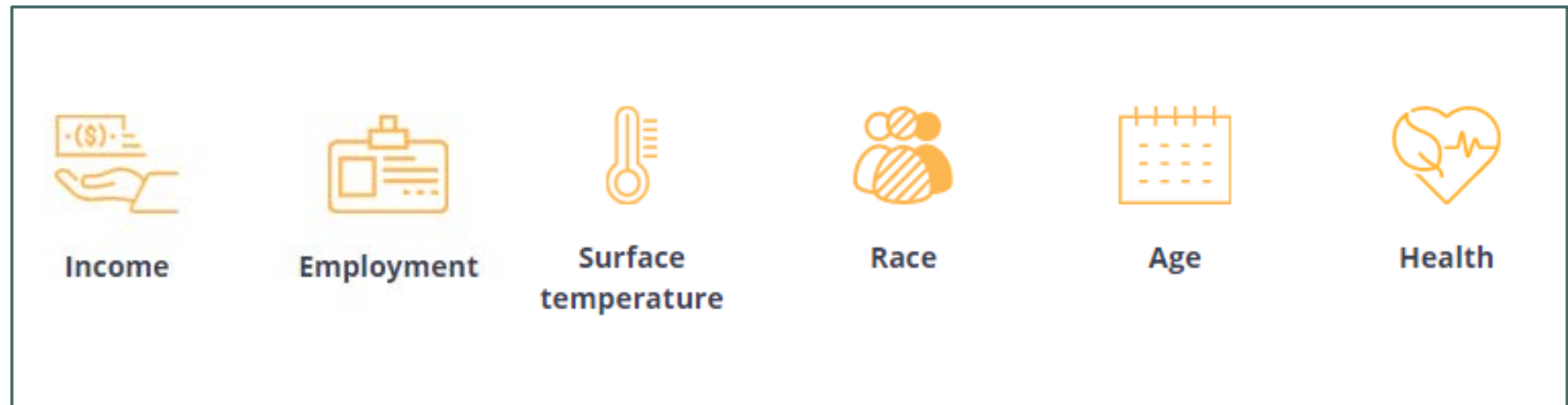
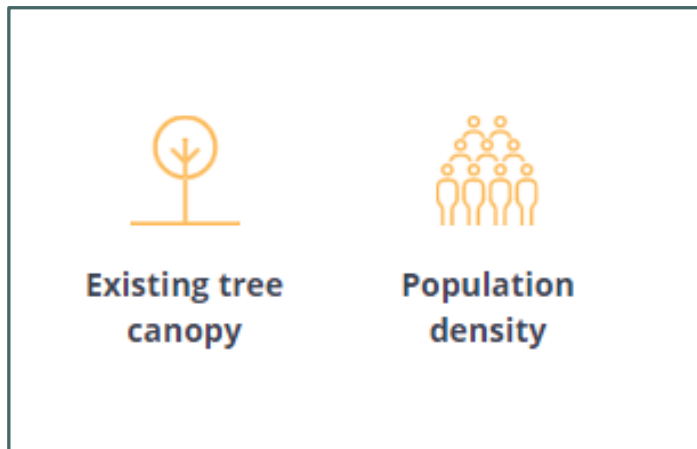


Tree Equity Score evaluates data from each neighborhood:

NEED



PRIORITY



WHERE SHOULD WE BE (BASED ON WHERE WE ARE)?

WHERE IS THERE GREATER VULNERABILITY?

WHAT YOU GET

Tree Equity Scores normalized between 0 and 100 for every urbanized area neighborhood (150k+ and city (4k+))

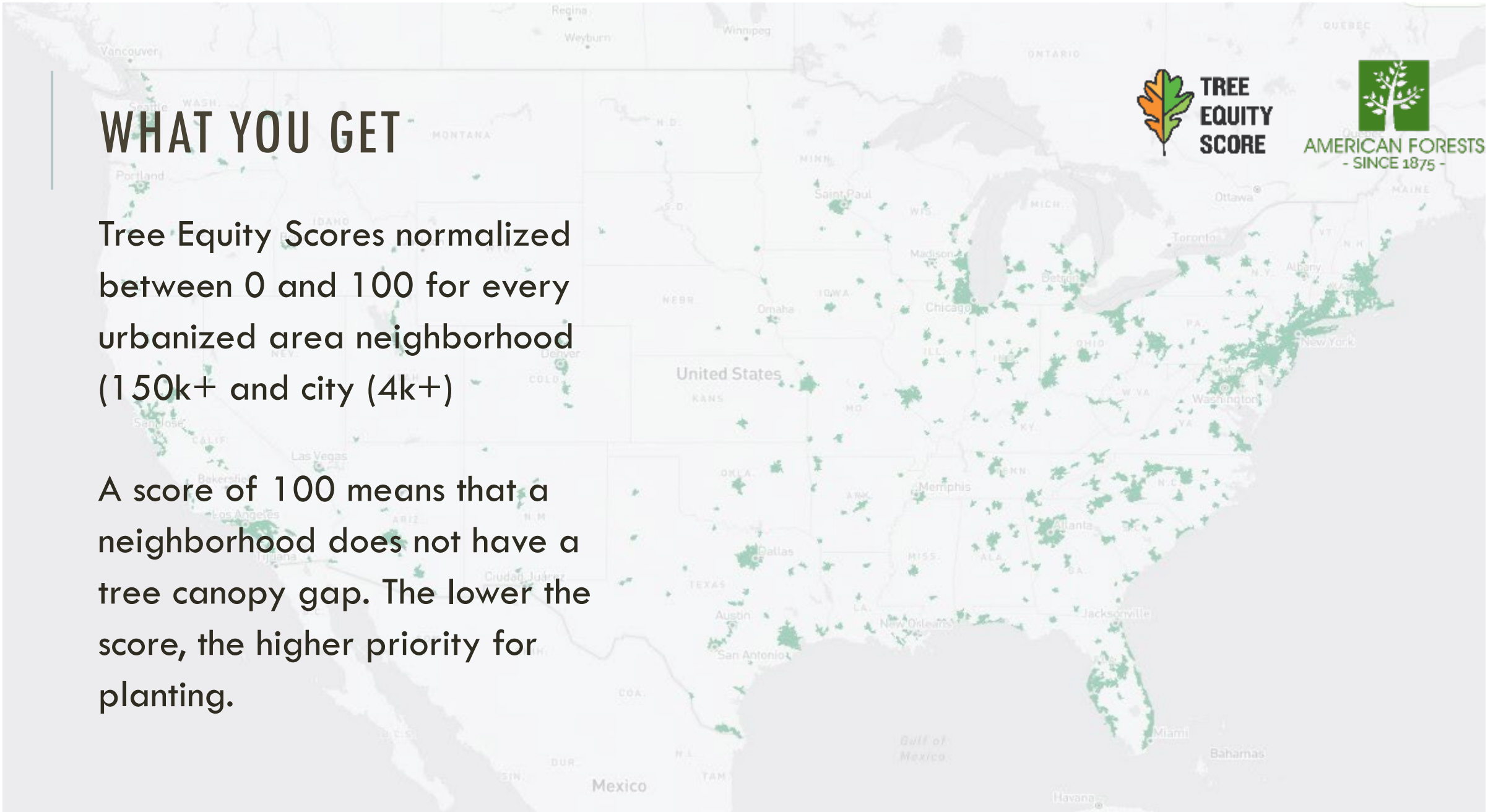
A score of 100 means that a neighborhood does not have a tree canopy gap. The lower the score, the higher priority for planting.



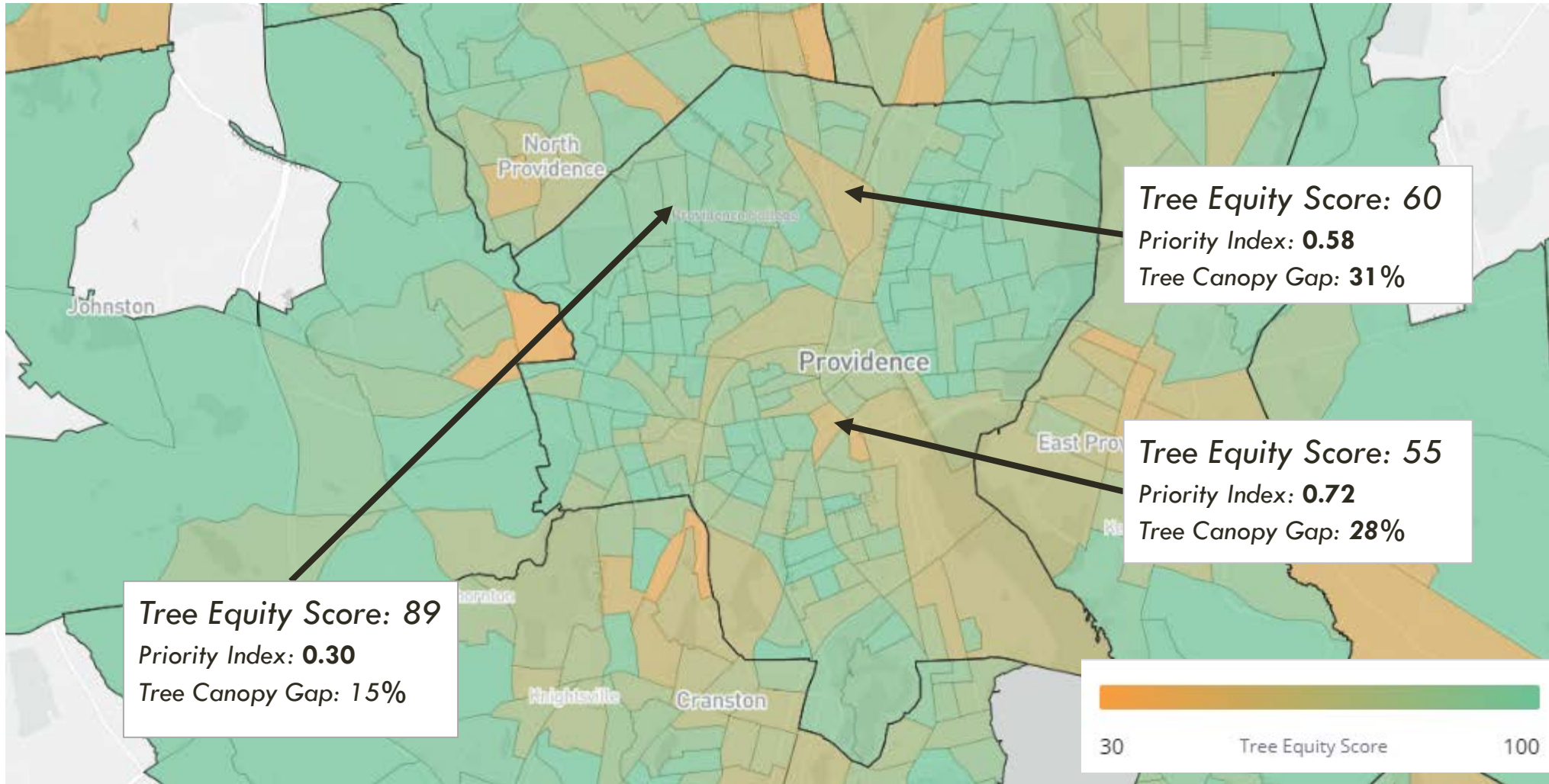
**TREE
EQUITY
SCORE**



AMERICAN FORESTS
- SINCE 1875 -



WHAT IT LOOKS LIKE



TWO TYPES OF APPS



- Tree Equity Score Explorer
 - Sets the national standard
 - Nationwide (CONUS)
 - Down to the block group Level
 - Aggregate canopy
 - Citywide benefit estimation
 - Municipal, Congressional District, State Reports

- Tree Equity Score Analyzer (TESA)
 - Deep Dive: City or Region
 - Down to parcel level
 - High-res canopy
 - Custom project-level scenarios and benefits
 - Custom Project reports with benefit estimation
 - Save and share scenarios
 - Local Data, stakeholder co-created

<https://treeequityscore.org/>