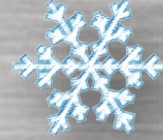
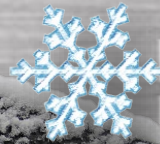




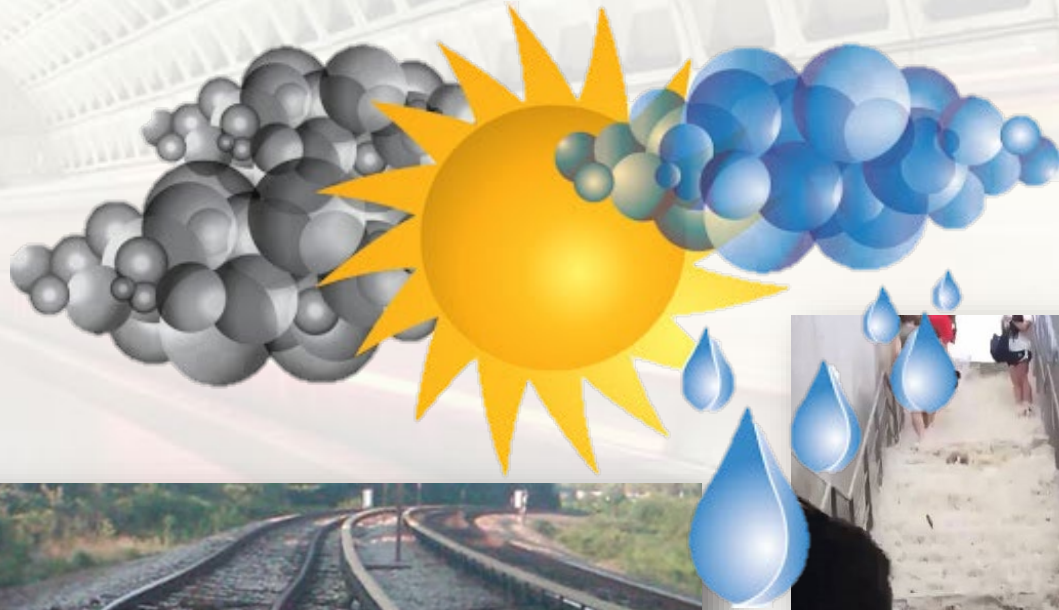
Winter Weather Conference

Roy Aguilera
Senior Vice President
Metro Integrated Command
and Communications
Center

October 31, 2023



Severe Weather Plan



- Winter Storms Season
 - Snow
 - Ice
- Tropical Storms Season
 - Hurricanes
 - Winds
 - Flooding
 - Severe Thunderstorms
- Heat Season
 - Rail Kinks
 - Air Quality
- Severe Storms
 - Power Outages
 - Flooding

Severe Weather Teams

■ Severe Weather Commanders

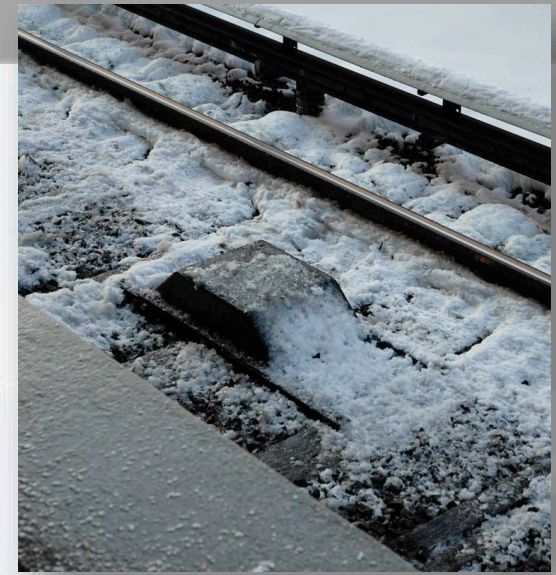
- Chief Operating Officer: Brian Dwyer
 - Shanita Wilkinson, Senior Vice President, Rail Services
 - Leroy Jones, Senior Vice President, Bus Services

■ Emergency Operations Center Director

- Metro Integrated Command and Communications Center:
Alexa Dupigny-Samuels

■ Emergency Operations Center Teams

- Representatives from different departments
 - Red Team is a standing day shift
 - Blue Team is a standing night shift



Severe Weather Notifications



- Metro Integrated Command and Communications Center Weather Team
 - Tracks weather 24 hours a day, 365 days a year
 - Notifies Weather Teams concerning decisions related to the weather conditions and the activation of the Emergency Operations Center
 - Represents Metro on the MATOC Severe Weather Working Group



WASHINGTON METROPOLITAN AREA TRANSIT AUTHORITY

Severe Weather Phases

- Alert
 - Monitor forecasts, issue advisories
- Readiness
 - Mobilization of resources to include deployment to predesignated locations
- Operations
 - Activities required to respond to weather conditions
- Recovery
 - Provide and restore regular service to Metrorail, Metrobus and MetroAccess



Winter Weather Readiness/Operations



■ Levels

- Level 1 (0-2")
- Level 2 (2-4")
- Level 3 (4-8")
- Level 4 (8+")



Level 1

- Weather Conditions

- 0" to 2" of snow or light collection of snow on surfaces

Metrorail Service

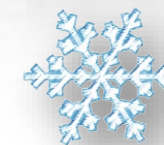
Normal service schedule.

Metrobus Service

Normal schedule operating as roads and traffic permits.

MetroAccess Service

Normal schedule operating as roads and traffic permits.



Level 2

- Weather Conditions
 - 2" to 4" of snow



Metrorail Service

Adjusted service schedule with longer headways.

Metrobus Service

Service suspended on many routes. Operating routes on snow detours.

MetroAccess Service

Normal schedule operating as roads and traffic permit. Outbound trips may be curtailed.



Level 3

- Weather Conditions
 - 4" to 8" of snow



Metrorail Service

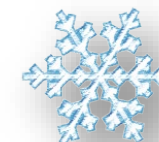
Limited-service schedule with longer headways.

Metrobus Service

Service suspended on all but the busiest routes. Operating routes on snow detours.

MetroAccess Service

Non-essential trips are canceled.



Level 4

- Weather Conditions
 - 8+” of snow

Metrorail Service

No service or limited underground service.

Metrobus Service

Provide at least one hour notice before service suspension.

MetroAccess Service

Suspension of service.



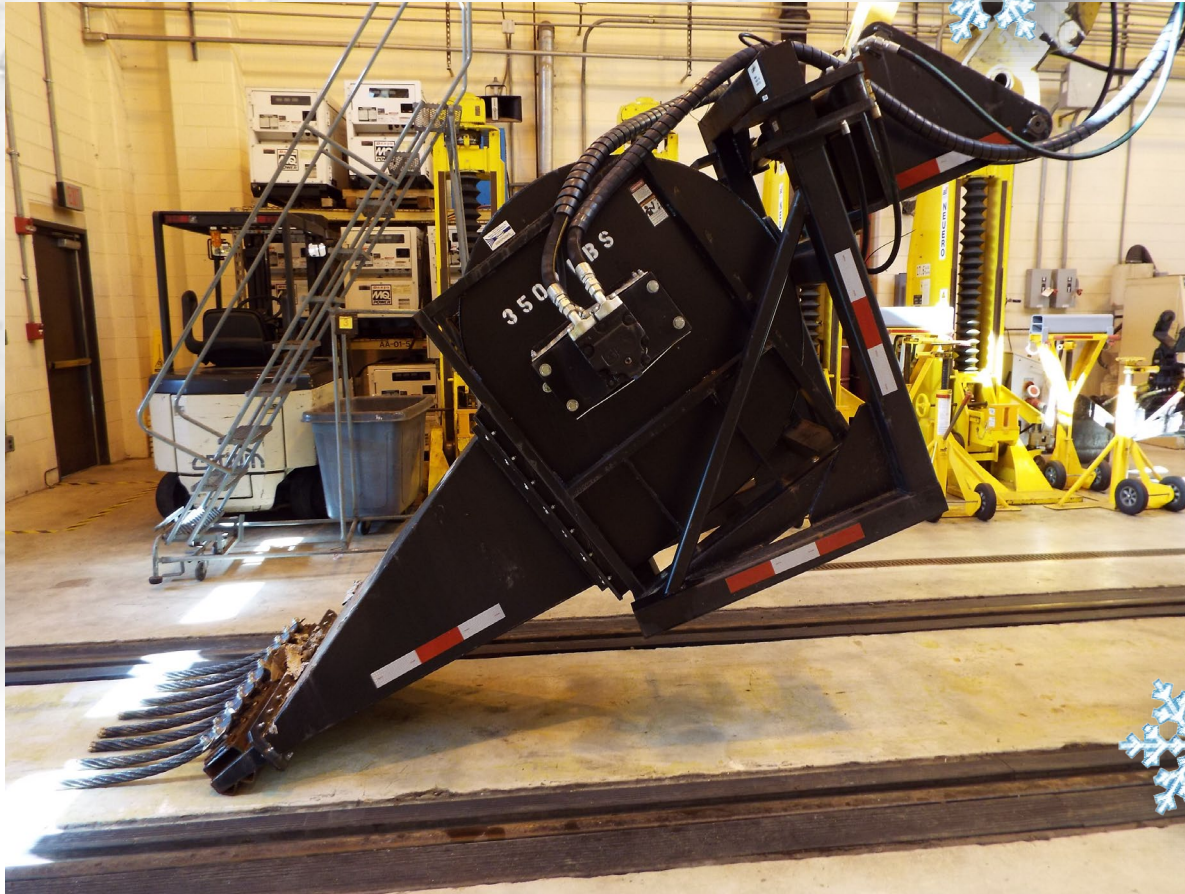
Recovery

■ 3 phases

- As tracks and roads are cleared, Metro will re-establish service based on improved surface conditions
 - Short-Term: <12 hours
 - Intermediate: 12-72 hours
 - Long-Term: > 72 hours



Snowplows



Cold Air Blower



Prime Mover

Snow Blowers



Excavator



Blower

De-Icers



De-icer



De-icer with Prime Mover



Railcar



Questions

