

# **2012**

# **Congestion Management Process (CMP)**

# **Technical Report**

***DRAFT***

**Transportation Planning Board Technical Committee**  
**October 5, 2012**

Andrew Meese and Wenjing Pu  
COG/TPB Staff

National Capital Region Transportation Planning Board (TPB)  
Metropolitan Washington Council of Governments (COG)

# Background of the CMP (1/2)

- A Congestion Management Process (CMP) is a requirement in metropolitan transportation planning
  - SAFETEA-LU and associated 2007 Federal regulations for metropolitan planning address CMP requirements
- Metropolitan long-range plans developed after July 1, 2007 must have a CMP
  - The official CMP component is wholly integrated into the CLRP to address the federal requirement
- **MAP-21 retains the CMP requirement, with enhanced requirements for monitoring and reporting of congestion and reliability**

# Background of the CMP (2/2)

- 2006 Federal certification of the TPB process recommended demonstrating how the Congestion Management System (CMS, now CMP) was applied at critical stages of the metropolitan planning process, in the CLRP or a stand-alone document
- CMP Technical Reports were released in 2008 and 2010
- 2010 Federal Certification of the TPB Process commended the CMP for its detailed documentation efforts in the 2010 CMP Technical Report
- Draft 2012 CMP Technical Report now ready for review

# Outline of the Report

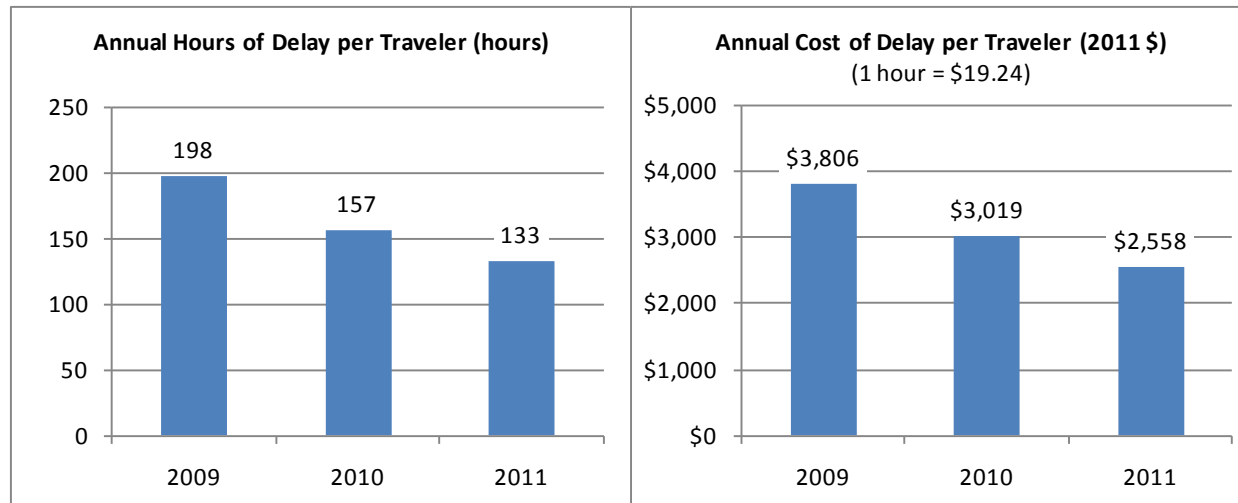
- Executive Summary
  1. Introduction
  2. State of Congestion
  3. Consideration and Implementation of Congestion Management Strategies
  4. Studies of Congestion Management Strategies
  5. How Results of the CMP Are Integrated into the CLRP
  6. Conclusions

## ***The 2012 CMP Technical Report:***

- *Compiles information from a wide range of metropolitan transportation planning activities, and*
- *Provides some additional CMP specific analyses, particularly I-95 Corridor Coalition Vehicle Probe Project/INRIX data-based analyses*

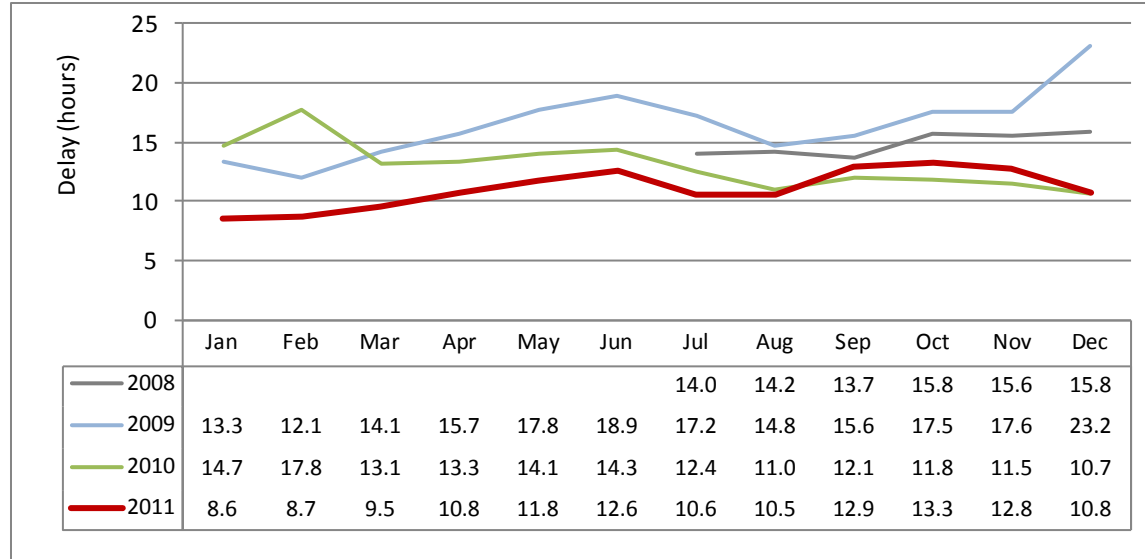
# Key Findings (1/10)

- Freeway travelers in the Washington region on average experienced **decreasing** delays from 2009 to 2011



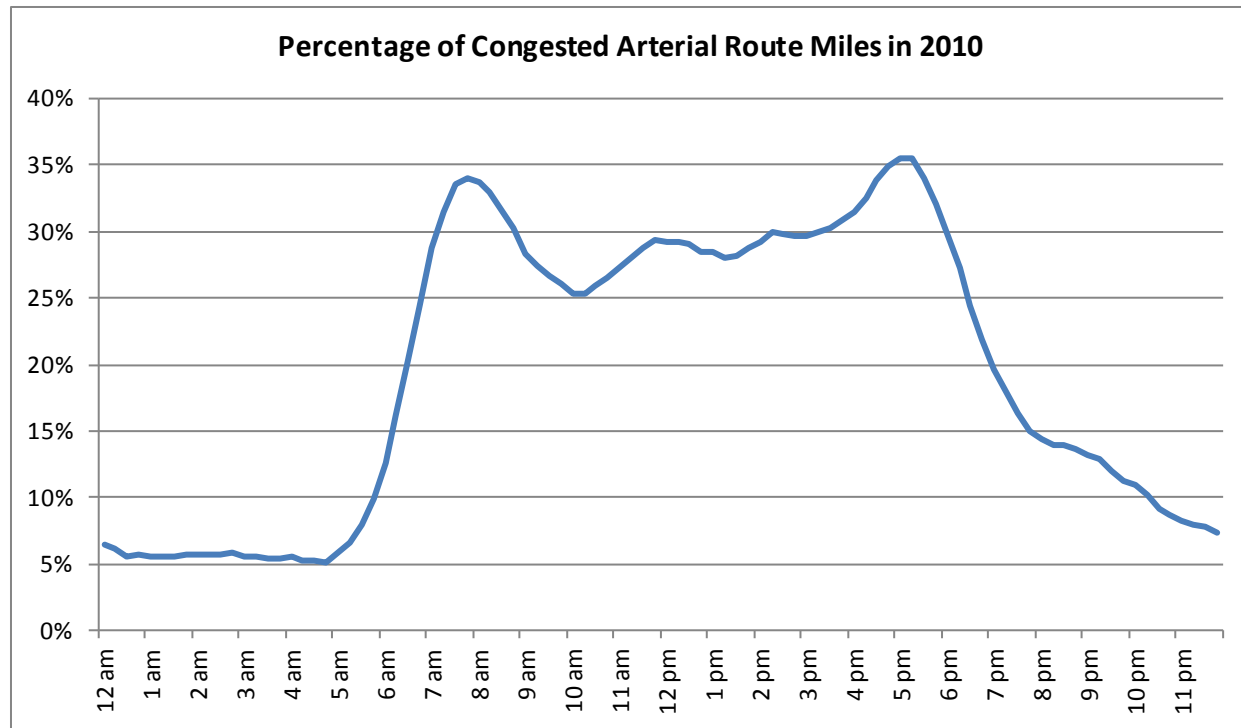
# Key Findings (2/10)

- Seasonal variation of congestion/delay:
  - Worst: June
  - Best: August/Dec – Feb, if no bad weather



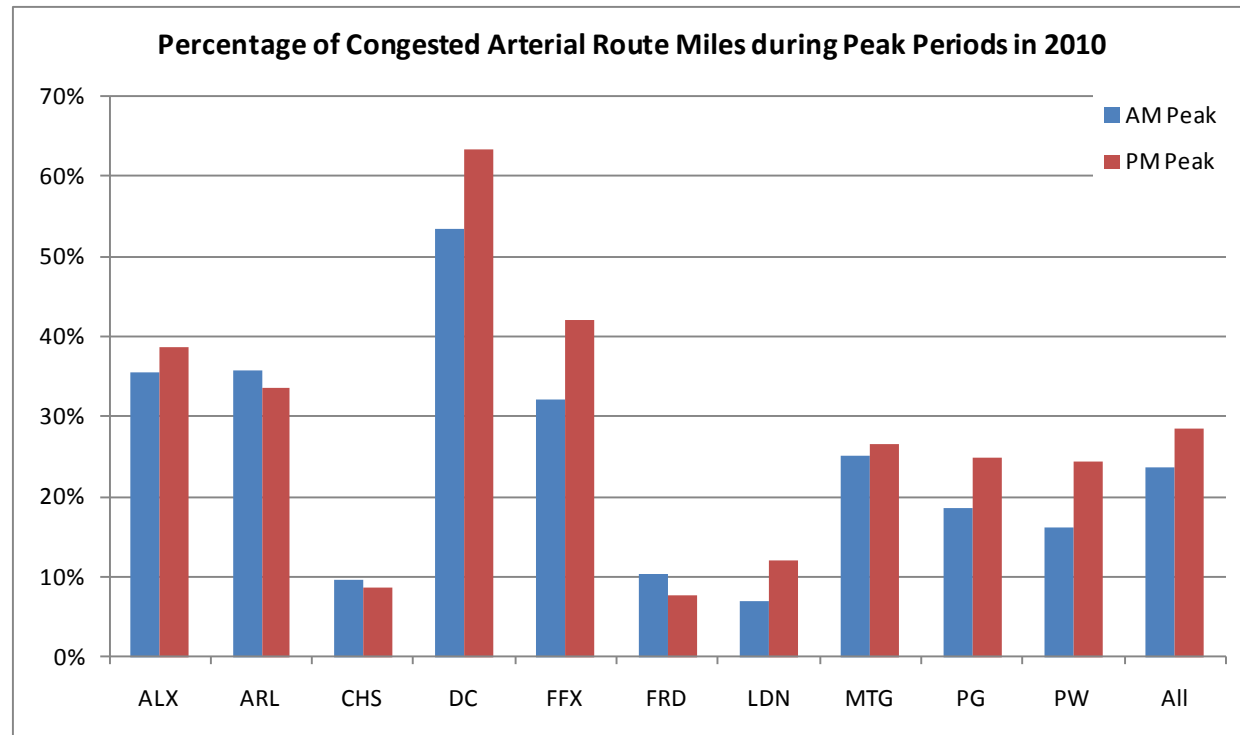
# Key Findings (3/10)

- 4,600 route miles of arterials were scanned for the first time, **more than a quarter** of which were always congested from 7:00 AM to 6:30 PM on a workday in 2010 (not necessarily the same set of arterials always congested)



# Key Findings (4/10)

- **Arterial congestion unevenly distributed** in the region, with more congestion in dense urban areas where there is an emphasis on streets as accessibility in addition to mobility





# Key Findings (5/10)

- The TPB's **Regional Transportation Priorities Plan (RTPP)** has taken a performance-based transportation planning approach...
  - The CMP supports the RTPP by monitoring congestion and providing strategies that could improve the mobility of the transportation systems

# Key Findings (6/10)

- The **Commuter Connections** program remains the centerpiece to assist and encourage people in the Washington region to use alternatives to the single-occupant automobile. The **transit system** in the Washington region serves as a major alternative to driving alone – transit mode share is among the highest in the country

# Key Findings (7/10)

- This region has enhanced efforts in regional transportation operations coordination:
  - Enhanced MATOC program
    - More staff covering longer time period
    - Dedicated website [www.MATOC.org](http://www.MATOC.org)
  - New Regional Incident Coordination (RIC) program
  - New public website for incidents information [www.capitalregionupdates.gov](http://www.capitalregionupdates.gov)

# Key Findings (8/10)

- Variably Priced Lanes (VPLs) provide options to travelers
  - The Intercounty Connector is open between I-270 and I-95
  - I-495 Express Lanes will open on the Beltway (VA side) in 2013
  - I-95 (Virginia) Express Lanes are in the CLRP

# Key Findings (9/10)

- Bike Sharing and Car Sharing programs are growing
  - Capital Bikeshare
    - Now: covers DC and Arlington
    - Future: City of Alexandria, Montgomery County, and Prince George's County
  - Car sharing
    - 800+ Zipcar cars
    - More providers: Car2Go, Hertz On Demand

# Key Findings (10/10)

- Congestion management strategies of Management, Operations, and Intelligent Transportation Systems (MOITS) provide essential ways to make most of the existing transportation facilities

# Recommendations

1. Continue to enhance the CMP to help support the Regional Transportation Priorities Plan (RTPP), and other **performance-based planning and programming processes**
2. *Continue the **Commuter Connections** program*
3. Continue and enhance the **MATOC program** and support agency/jurisdictional transportation management activities including the Regional Incident Coordination (RIC) Program

# Recommendations (Cont'd)

4. Capacity increasing projects should consider **variable pricing** and other management strategies
5. Encourage implementation of congestion management programs for **major construction projects**
6. Continue to **encourage transit** in the Washington region and explore transit priority strategies



# Recommendations (Cont'd)

7. Continue to encourage access to **non-auto travel modes**
8. Continue to explore Integrated Corridor Management (ICM) systems and Active Traffic Management (ATM) strategies
9. Continue and enhance providing real-time, historical, and multimodal traveler information
10. Continue and enhance the **arterial congestion monitoring program**

# Recommendations (Cont'd)

11. Continue and enhance frequently updated congestion reporting with a **standardized procedure** in calculating performance measures and more **trip-based** assessments
12. Continue to conduct **Geographically-focused Household Travel Surveys** to collect mode choice information

# Review Schedule

- Committee presentations
  - MOITS, June 12, 2012 and July 10, 2012
  - Commuter Connections, July 17, 2012
  - Travel Forecasting Subcommittee, July 20, 2012
  - *TPB Tech*, October 5, 2012
- DEADLINE for comments: October 19, 2012
- Proposed finalization at Nov. 2, 2012 Technical Committee
- Please send comments to COG/TPB staff  
Wenjing Pu: [wpu@mwcog.org](mailto:wpu@mwcog.org)

Thank you!

Questions?