



# Planning Directors Technical Advisory Committee

National Capital Region  
Transportation Planning Board  
Washington DC  
July 18, 2018

Eric Shaw, Director  
DC Office of Planning  
Chair, Planning Directors Technical Advisory Committee

# Who are We?

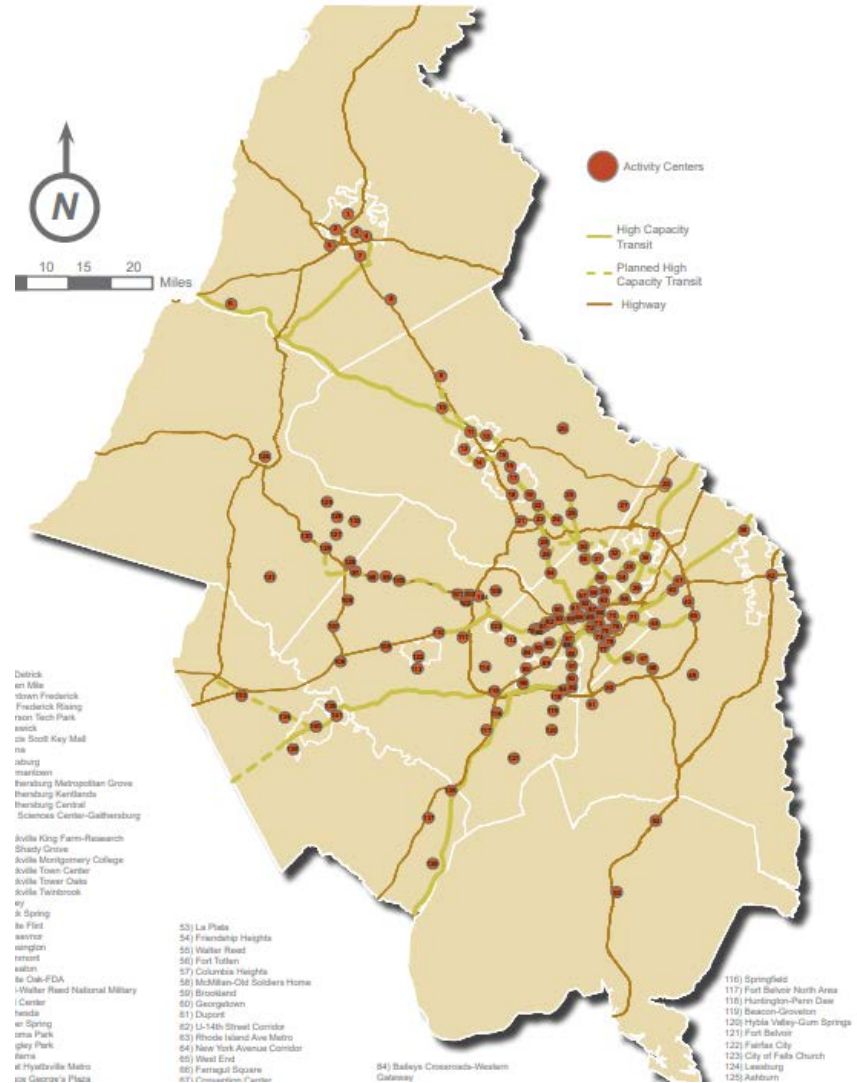
Technical Committee of COG  
Board of Directors.

## We advise on:

- Comprehensive planning and zoning
- Economic growth and forecasting
- Transportation–land use relationships

## We Help:

- Prepare Cooperative Forecasts
- Designate Activity Centers



Source: MWCOG



# TPB Endorsed Initiatives

- 1) Bring Jobs and Housing Closer Together
- 2) Expand Bus Rapid Transit Regionwide
- 3) Move More People on Metrorail
- 4) Provide More Telecommuting and Other Options for Commuting
- 5) Expand Express Highway Network
- 6) Improve Walk and Bike Access to Transit
- 7) Complete the National Capital Trail



Source: MWCOG



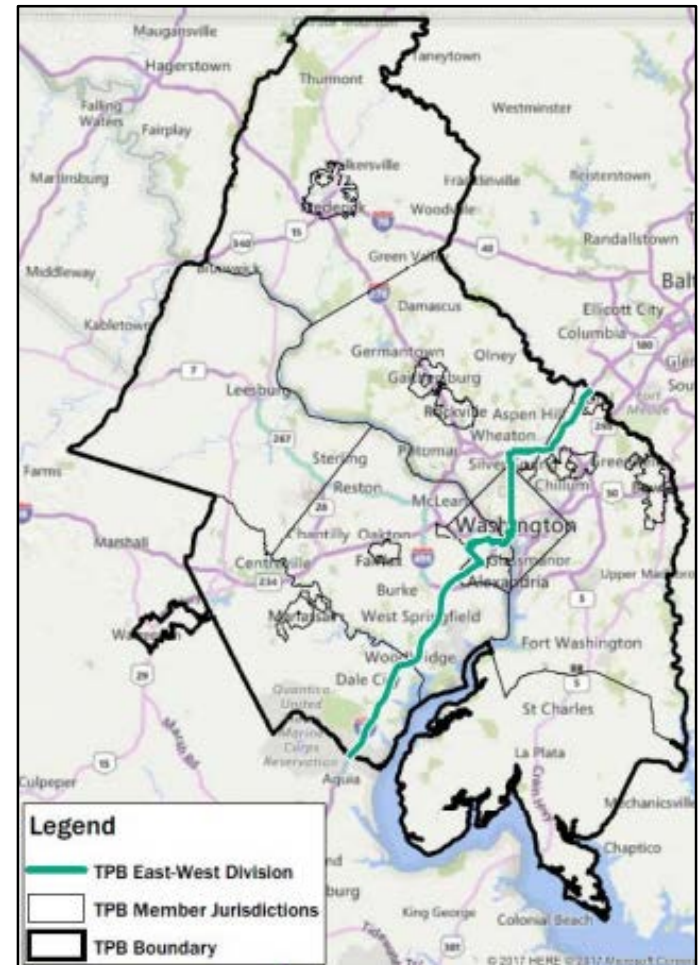
# Land Use Initiative

## Optimize Regional Land Use Balance *(Bring Housing and Jobs Closer Together)*

More **households** needed to meet demand for future job growth.

Growth should be focused in **Regional Activity Centers** and/or in areas with high-capacity transit.

Better **balance** of jobs and housing between the eastern and western portions of the region.

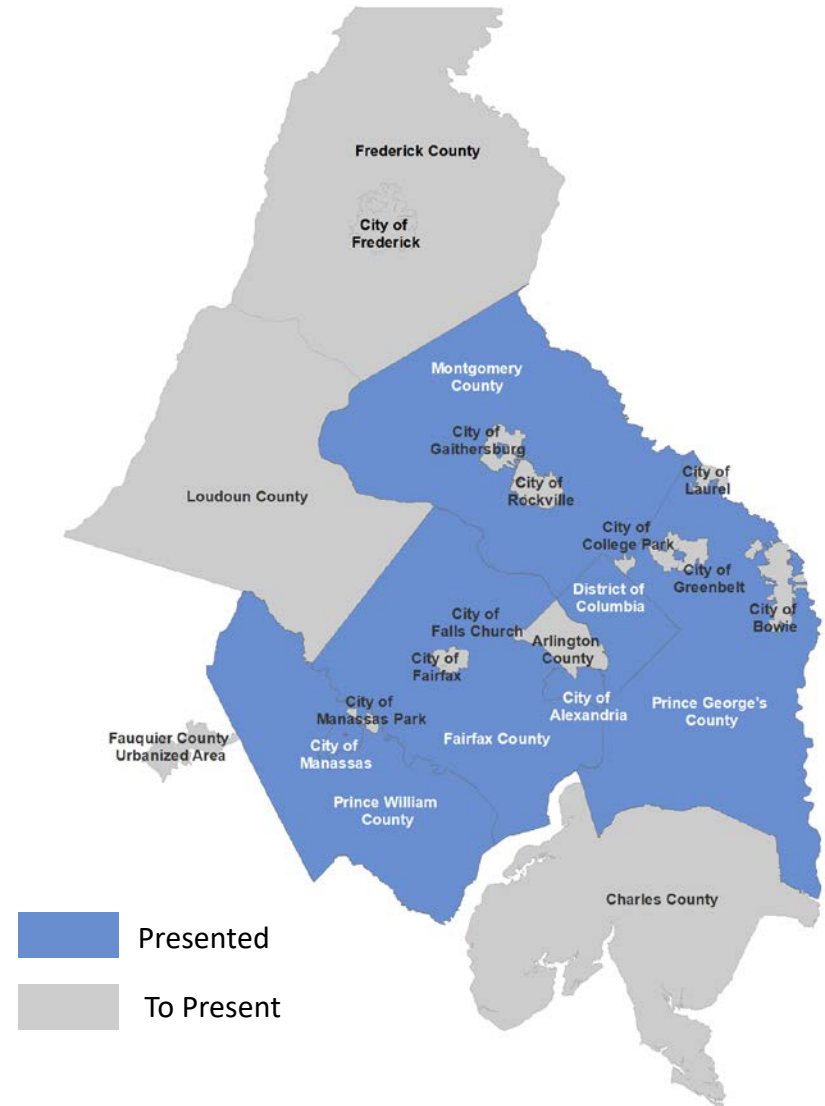


Source: MWCOG

# Jurisdictions' Planning Efforts

## Presentations Given at Planning Directors

- **District of Columbia:** Resilient Waterfront Design
- **Fairfax County:** Embark Richmond Highway
- **City of Alexandria:** Potomac Yard and Eisenhower East
- **Montgomery County:** TOD Planning
- **Prince George's County:** Purple Line Planning
- **Prince William County:** Transit-Oriented Development
- **City of Manassas:** Historic Downton Manassas Planning



# Planning Directors' Discussion

Conversations have focused on:

- Development not achieving planned density
- Last Mile Connections
- Coordinating land use with transportation projects
- Thinking multi-modal
- Stronger community conversations
- Mixed use look different in different places
- Citizen opposition to development
- Identify land use implications
- Disconnect between current & long range planning
- Better jobs/housing balance in Activity Centers
- Land availability to build public facilities



# What Have We Learned

Land Use is **more** than transportation and housing

Quality of life is affected by **Mobility**

TOD has **multiple** Typologies

Land Use

Economic Development

Housing

Environmental Protection

Transportation

Community Services & Facilities

Urban Design

Historic Preservation

Infrastructure

Parks, Recreation & Open Space

Educational Facilities

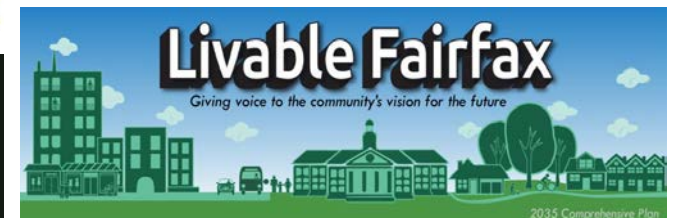
Arts & Culture

# What Have We Learned

## Multiple jurisdictions are currently working on their Comprehensive Plans



Falls Church Vision  
2040



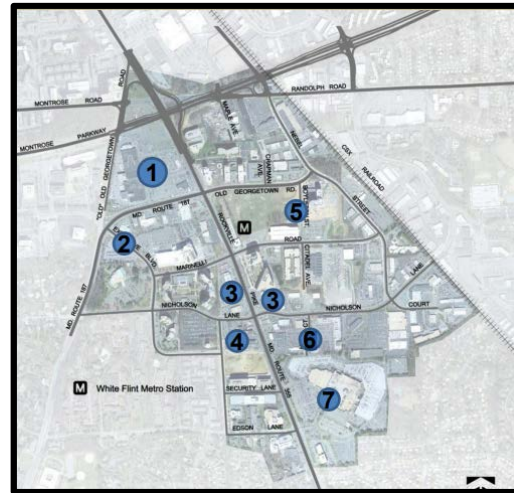


# What have we Learned

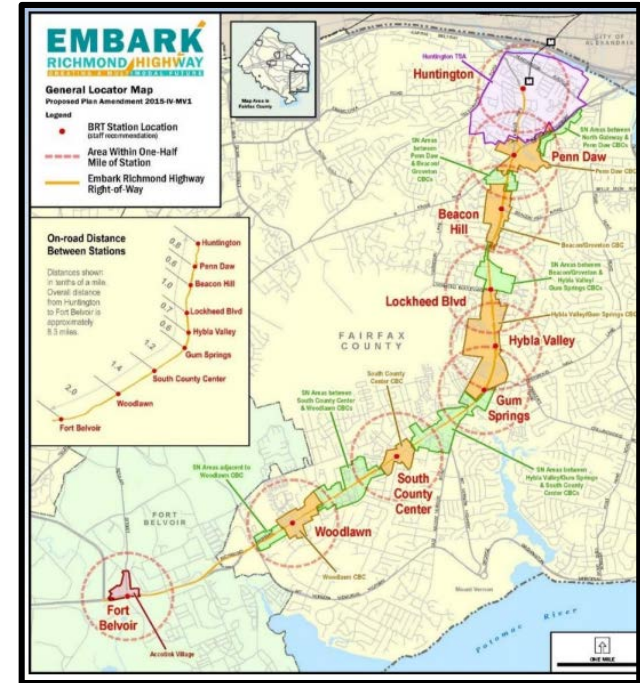
## The region is planning for Redevelopment



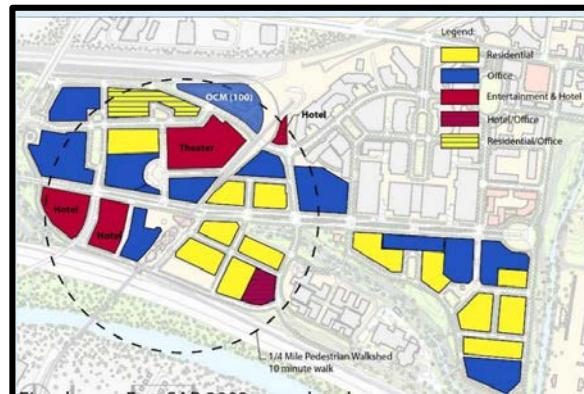
Buzzard Point



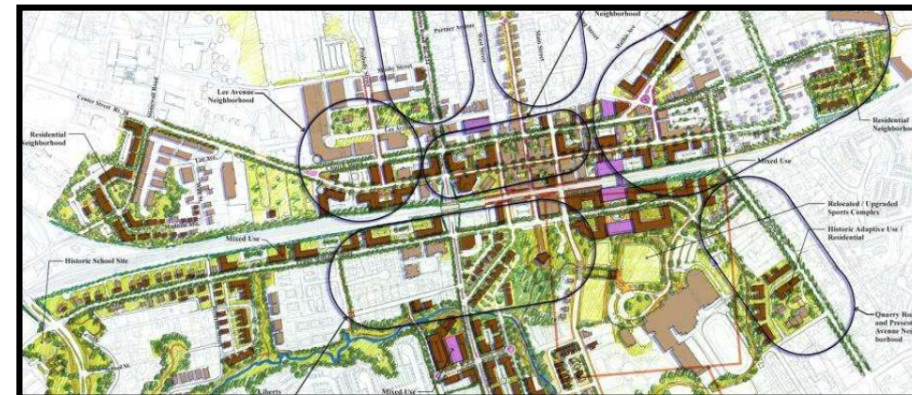
White Flint



Richmond Highway



Eisenhower East



Historic Downtown Manassas

# Cross Cutting Themes

## Timing

There is a disconnect between planning and development outcomes

Land use changes faster than infrastructure can be implemented

## Community

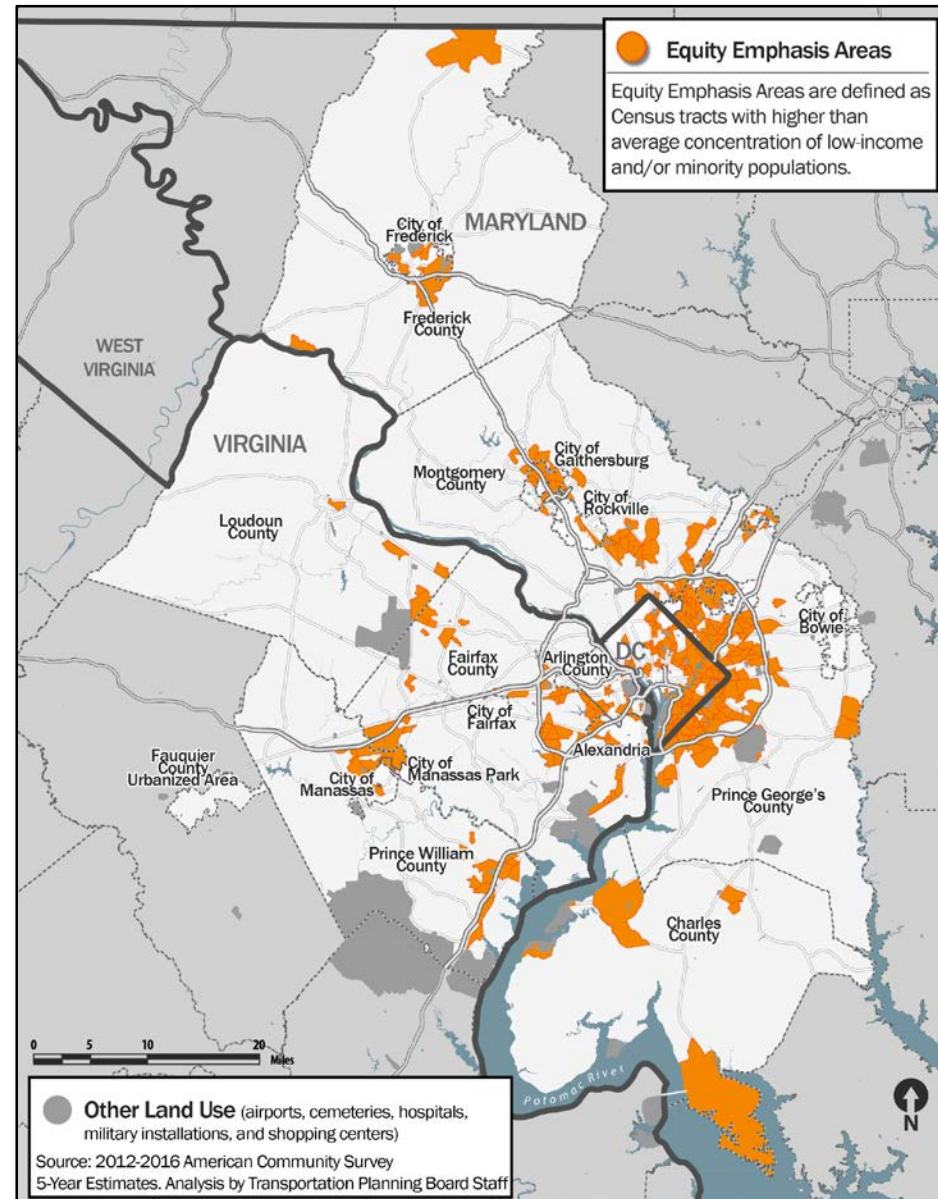
Immediate needs and concerns compete with long term vision

## Financing

The Market Matters

# Cross Cutting Themes

There needs to be a bigger emphasis on **equity** and **inclusiveness** in TOD planning



- Regional goals should be considered in the local planning process.
- There should be better coordination between transportation planning and land use planning.
- How does TPB get Regional goals integrated into local planning?