

# MONTGOMERY COUNTY MICROMOBILITY PROGRAM

## Shared Dockless Bike and Scooter Workshop Metropolitan Washington Council of Governments

**Sande Brecher and Gary Erenrich**

Montgomery County Department of Transportation (MCDOT)  
June 23, 2022



# WHY DID THE COUNTY START THE PILOT PROGRAM?

## GOALS AND OBJECTIVES

- Supports Several of the County Executive’s Goals:
  - *Safety & Vision Zero*
  - *Environment & Climate Sustainability*
  - *Economic Development & Equitable Access*
- Consistent with MCDOT Vision:
  - *“To move people and connect places with seamless, equitable transportation options that are safe, environmentally responsible, and support economic growth and vibrancy in Montgomery County.”*
- Answers broader need as demonstrated by regional trends

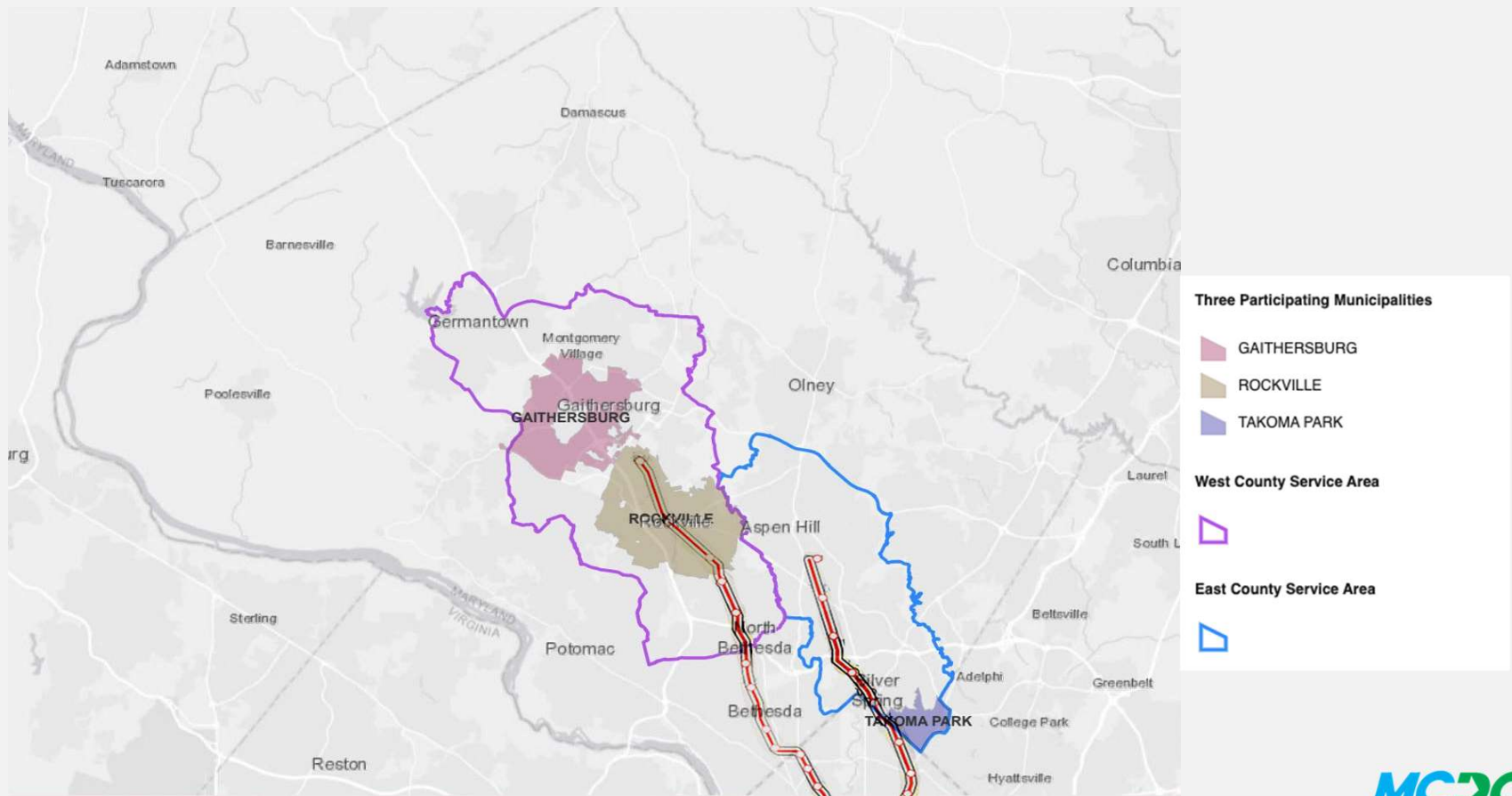


# IMPROVING PERSONAL MOBILITY CHOICES

- Low-cost transportation options
- Support of Climate Action Plan goals
- Reduced auto trips and parking demand
- Broader access for minorities and underserved communities
- First-Mile / Last-Mile connections to transit and employment
- Participation from Cities of Takoma Park, Rockville, and Gaithersburg
  - Recently expanded service area to Germantown
- Private sector interest from developers and property managers as well as community
- Support of Transportation Demand Management (TDM) program goals promoting alternatives to autos



# MCDOT DOCKLESS VEHICLE PILOT SERVICE AREAS SPRING 2022



# MOU REQUIREMENTS

- Must show a valid driver's license
- Speed limit for e-scooters is 15 mph
- Must be 18 or older to rent an e-bike or e-scooter
- Riders not able to end their trip outside the designated service areas
- E-Scooters can only be parked within the boundaries of the east and west pilot program service areas
- E-Scooters are prohibited from riding on sidewalks, or on streets where the speed limit is 50 mph or higher
- E-scooters must be parked in the public right of way and cannot interfere with traffic operations, block driveway access, crosswalks, ADA ramps, pedestrian access, bus stop, fire hydrants, or impede access to private property or businesses.
- E-Scooter companies must recommend riders wear a helmet when riding



Video Link: [https://www.youtube.com/watch?v=Q-Oo1fT2LTw\\_](https://www.youtube.com/watch?v=Q-Oo1fT2LTw_)

# DOCKLESS VEHICLE PROGRAM EXPANSION PILOT PROGRAM – PHASE 3

- MOUs signed with 3 Vendors: Lime, Bird, and Spin
- Provisions
  - Minimum 200 vehicles & maximum of 500 vehicles/vendor
  - Permit increasing maximum if daily use warrants
  - 15 mph max speed
  - Operations permitted between hours of 5 a.m. – 10 p.m.  
**Future Consideration: Examine hours of operations**
  - Montgomery Parks Department has a separate scooter program effective as of June 1st, 2019—  
MCDOT does not report on Parks program results



## VENDOR COMPLIANCE WITH MOU

- MOU (posted on MCDOT website)
- Insurance, \$10K Performance Bond
- Weekly or Monthly Reporting – e.g. use, complaints, accidents
- Data to be provided to 3<sup>rd</sup> party vendor designated by County to consolidate & analyze info from all operators
- Respond to calls within 2 hrs. during established time parameters: 6 am – 11 pm
- Responsible for customer and public information
- Conduct regular training sessions, public education programs (Update: MCDOT now plans and schedules)
- Display visible/tactile logo, contact information, website, and phone numbers on dockless vehicles
- No more than 3 dockless vehicles per block face for each company
- Subject to adjustment for block sizes, and composition of the area
- Designated deployment areas max = 15 vehicles

# EMBOSSED LETTERING FOR THE VISUALLY IMPAIRED





# MONTGOMERY COUNTY COUNCIL PENDING BILL 36-21

- Provides MCDOT with structured oversight over new program
- Requires registration of e-scooters for rental fleet use
- Implements e-scooter operation and parking requirements covering privately-owned scooters as well as rentals
- Codifies some of the provisions in the current MOUs for shared rental scooters
- County Executive wants to strengthen dockless vehicle parking enforcement.
- To assist with consideration of the bill, MCDOT gathered information on other jurisdictions' policies:
  - Parking (e.g. "Lock-To") requirements, enforcement process, minimum age, helmet requirements, hours of operation, sidewalk riding, equity measures
  - Staff prepared table for review by Council comparing various policies across the region

# QUESTIONS FOR DISCUSSION

- Accommodating Safe Riding
  - Motorized vehicles prohibited on sidewalks -- Except motorized wheelchairs & similar ADA-related vehicles
  - Can be ridden in bike lanes, on shared-use paths, or on streets w/ under 50 mph speed limit
  - E-bikes and e-scooters not permitted to be ridden on sidewalks:
    - Examine prohibition on sidewalks and exceptions to the rule
    - E.g. Six-lane roadways of 35+mph speeds
- Lock-to Requirements – Effectiveness? Issues encountered?
- Enforcement of No-Parking Areas
  - Identifying when scooters are parked in exclusionary zones
  - Complaints of improper parking – Montgomery County has had few
- Regional Quarterly Reporting – Should we do something to share experience more regularly?
- Nighttime Operation – Benefits, issues or challenges?



# STATE E-SCOOTER POLICIES

- **Added definition of e-scooters to State transportation law**

- “Vehicle Laws - Electric Low-Speed Scooter”
- SB 770/HB 748 – Sponsored by Senator Will Smith & Delegate David Fraser-Hidalgo
- Passed by both Chambers of Maryland Legislature
- Governor signed April 2019
- <http://mgaleg.maryland.gov/webmga/firmMain.aspx?id=hb0748&stab=01&pid=billpage&tab=subject3&ys=2019RS>

**Defined as a type of bicycle** (Note: e-bikes already defined in State code)

- **e-Scooters required to follow traffic laws**

- Controls types of roads on which they can operate
- Requires adherence to traffic control devices
- Maximum speed of 20 mph – **County Pilot Program limits speed to 15 mph**

# EXPERIENCE WITH PILOT PROGRAM TO DATE

## Program Parameter

- **Fleet Numbers:**

- Start with minimum 50; ramp up gradually to a minimum of 200 vehicles & maximum of 500 vehicles per company
- Permit increasing maximum if daily use warrants – avg. 3 trips/day for e-scooters

- **Speed:** 15 mph speed limit

- **Operational Hours:**

- Permitted between hours of 5 a.m.–10 p.m.  
(being reconsidered)

## Status

- Vendors: Lime, Bird & Spin
- Minimum fleet numbers not yet attained:
  - Among all vendors combined, recent daily total scooters observed is averaging approx 700, concentrated in Silver Spring, North Bethesda, Rockville, and Gaithersburg
- Overall program operating at about 1 trip/day/vehicle
- Increasing max # not an issue at this point

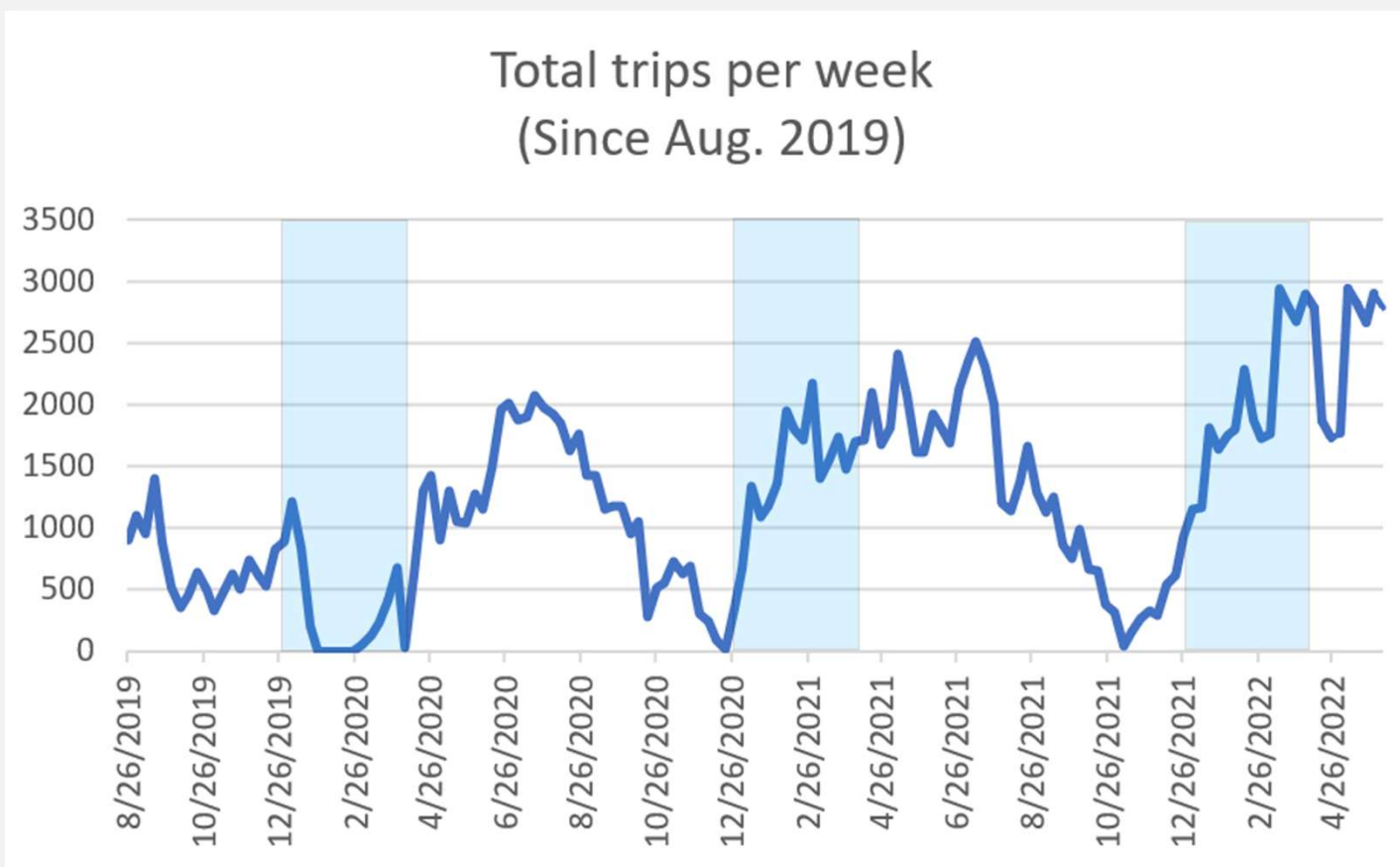
# COUNTY-SPONSORED SCOOTER TRAINING SESSIONS



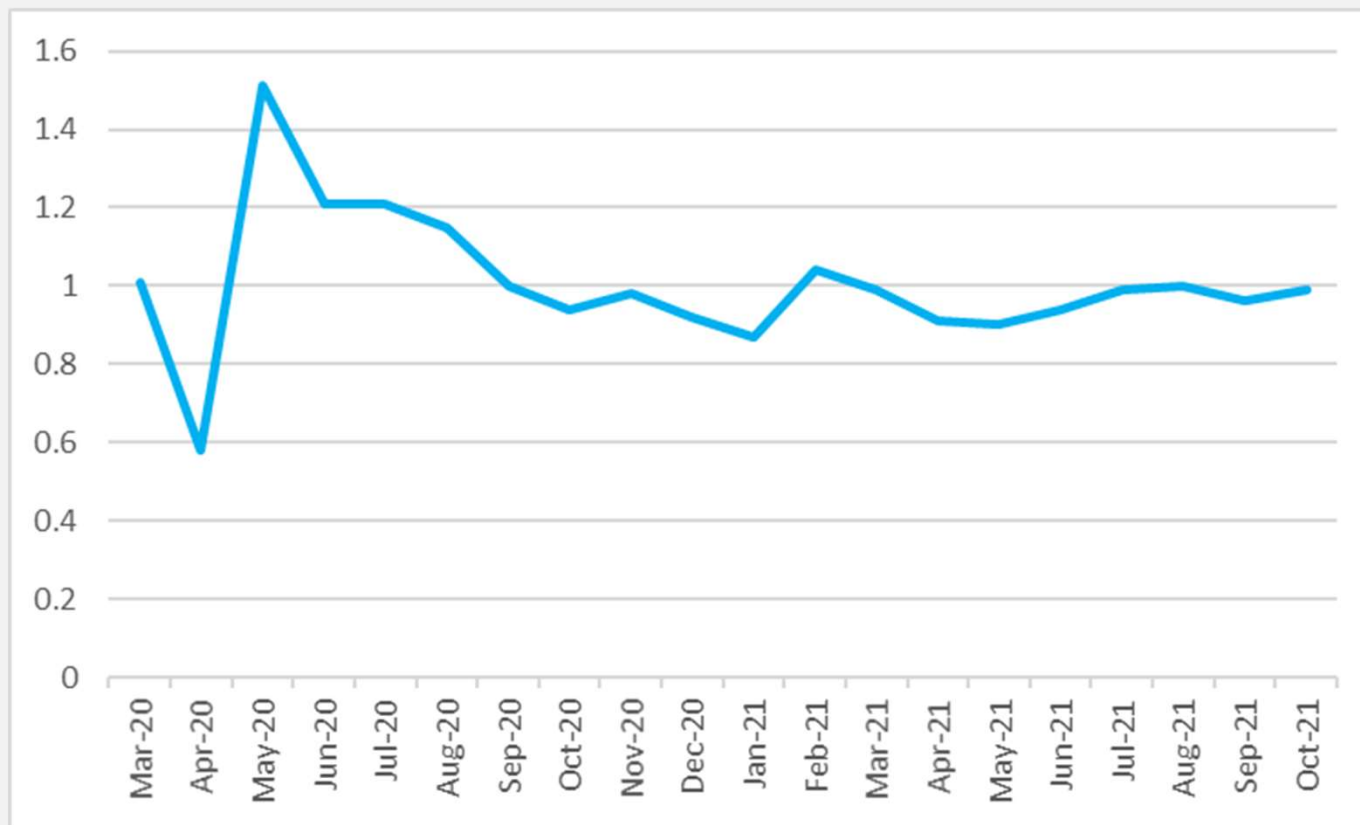
Date	Location	Attendance
Sat., April 9, 2022	Westfield Montgomery Mall, Bethesda	35
Sat., April 30, 2022	Upper County Recreation Center, Gaithersburg	50
Sat., June 4, 2022	Wheaton Ice Arena parking lot, Wheaton	20
Sat., June 11, 2022	Montgomery College, parking lot 13, Rockville	60

# E-SCOOTER USE IN MONTGOMERY COUNTY

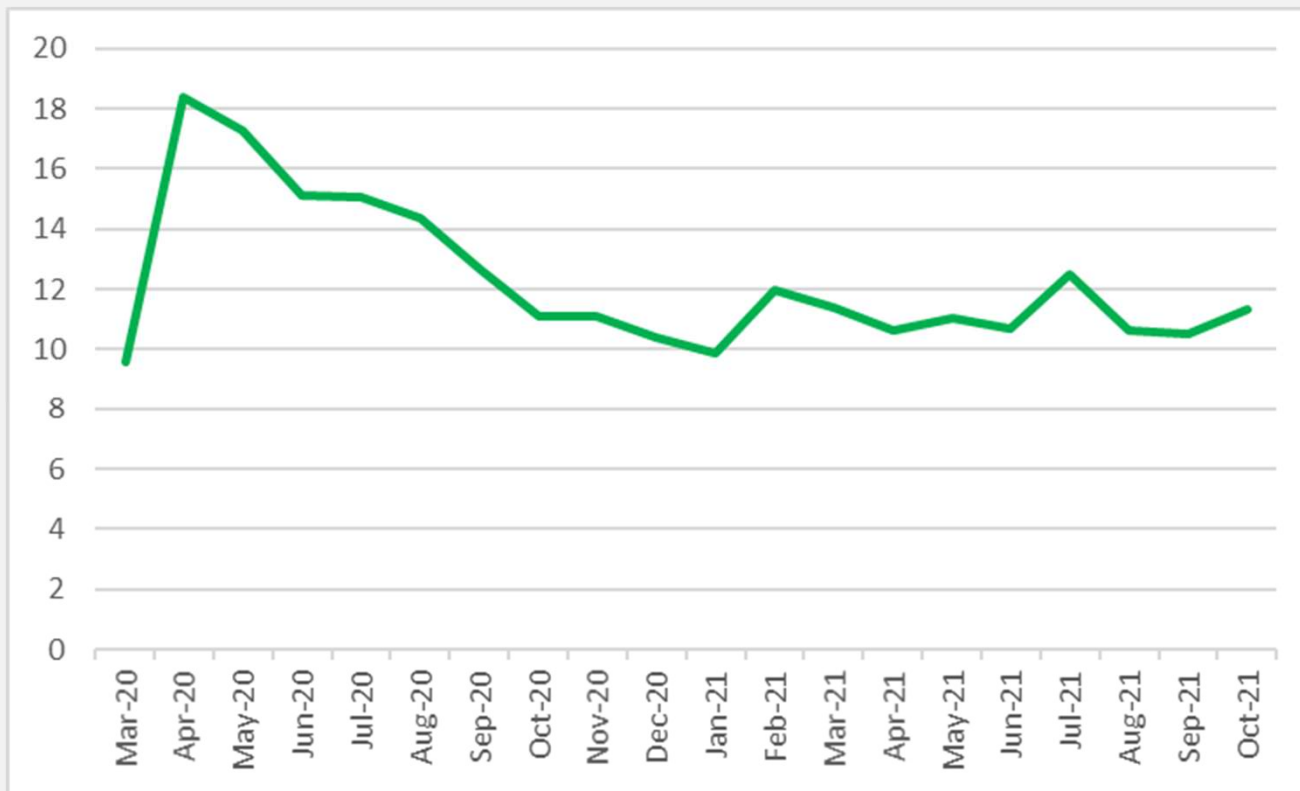
(AUGUST 2019-MAY 2022: BY WEEK)



# AVERAGE SCOOTER DISTANCE TRAVELED DURING COVID-19 (BY MILE)



# AVG. SCOOTER TIME TRAVELED DURING COVID-19 (BY MINUTE)





# E-SCOOTER USE IN MONTGOMERY COUNTY

## (DECEMBER 2021-MAY 2022)

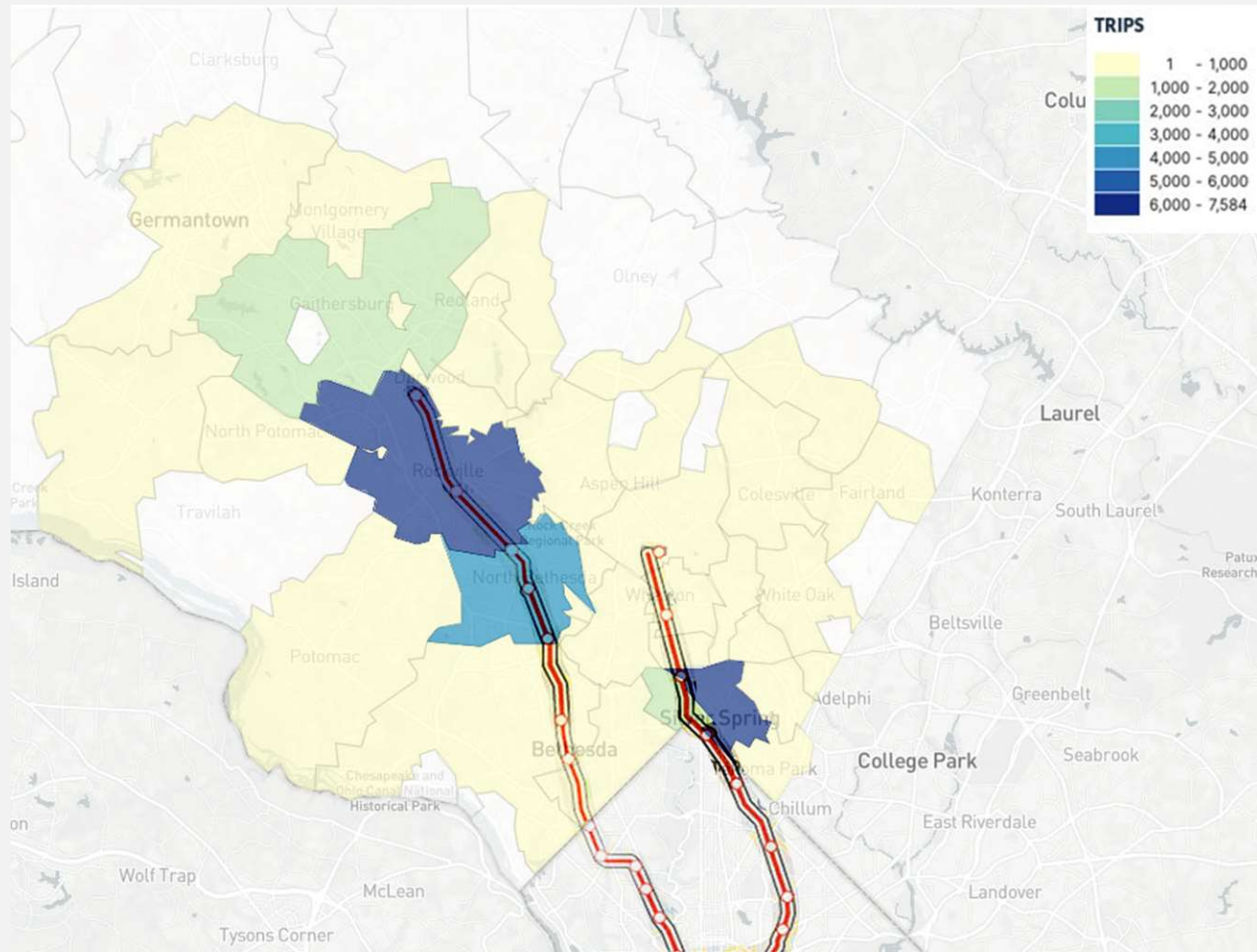


Month-Year	Average Monthly Scooters Used	Total Trips Per Month by Scooter
December 2021	235	2,680
January 2022	126	898
February 2022	231	2,466
March 2022	480	6,510
April 2022	563	8,394
May 2022	635	11,138
<b>Total</b>		<b>32,086</b>

## E-SCOOTER USE IN MONTGOMERY COUNTY (CUMULATIVE DATA FROM DECEMBER 2021 - MAY 2022)

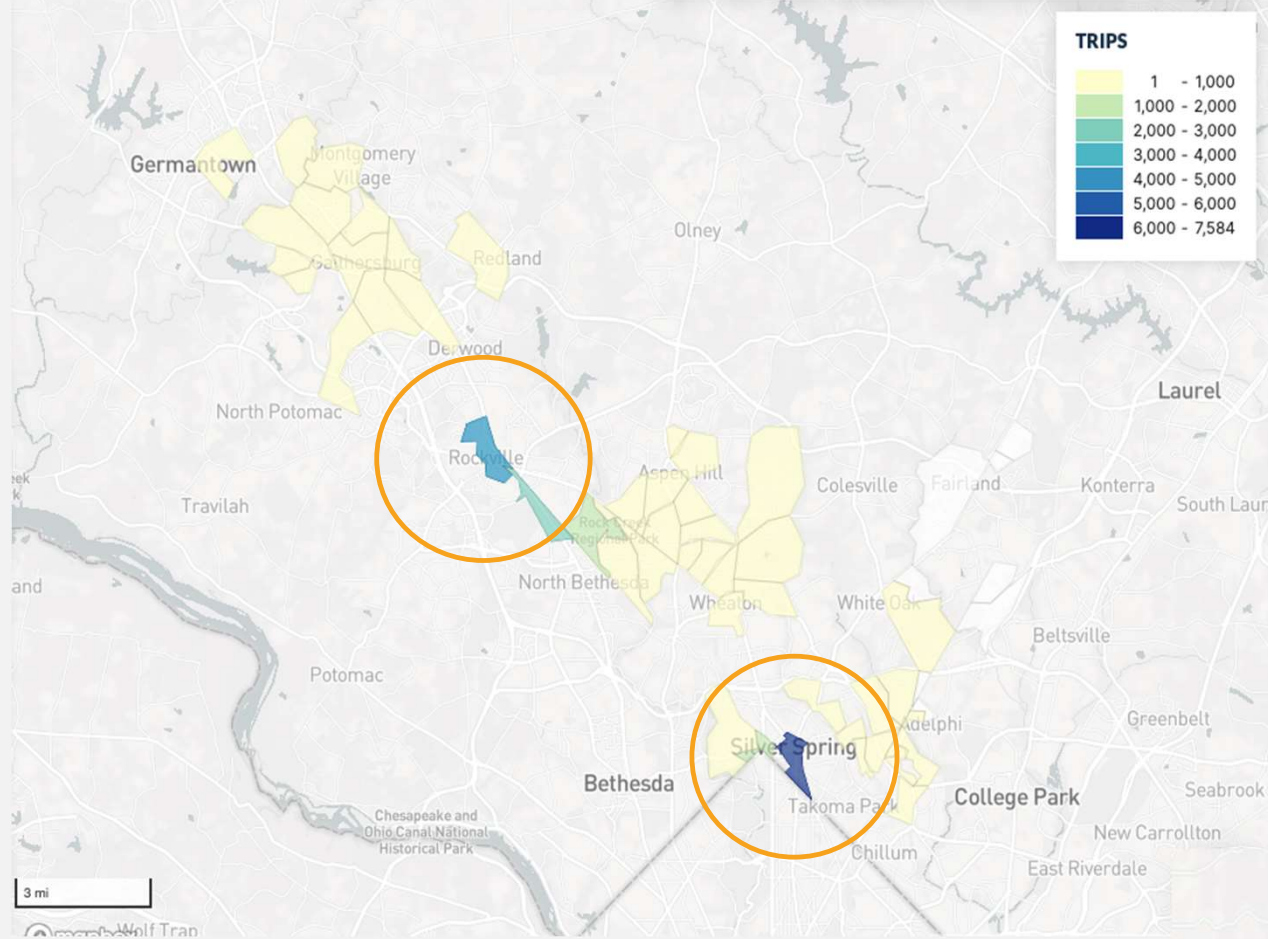
Locations of Origin	Number of Total Trips	Percent of Trips
Rockville	10,124	26.90%
Silver Spring	8,976	23.90%
North Bethesda	6,907	18.40%
Gaithersburg	2,686	7.10%
West Silver Spring	2,276	6.00%
Takoma Park	1,308	3.50%
Wheaton	970	2.60%
Derwood	933	2.50%
Glenmont	795	2.10%
Germantown	749	2.00%
Long Branch	494	1.30%
Aspen Hill	405	1.10%
Other Selected Locations:	929	2.40%
<b>Total- All Areas</b>	<b>37,552</b>	<b>99.80%</b>

# TRIP ORIGIN OR TRIP DESTINATION (DECEMBER 2021 - MAY 2022)



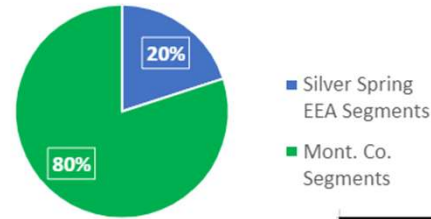
NAME	COUNT	PERCENT
Rockville	10,124	26.90%
Silver Spring	8,976	23.90%
North Bethesda	6,907	18.40%
Gaithersburg	2,686	7.10%
West Silver Spring	2,276	6.00%
Takoma Park	1,308	3.50%
Wheaton	970	2.60%
Derwood	933	2.50%
Glenmont	795	2.10%

# TRIP ORIGIN AND TRIP DESTINATION MWCOCG EQUITY EMPHASIS AREAS (DECEMBER 2021 - MAY 2022)



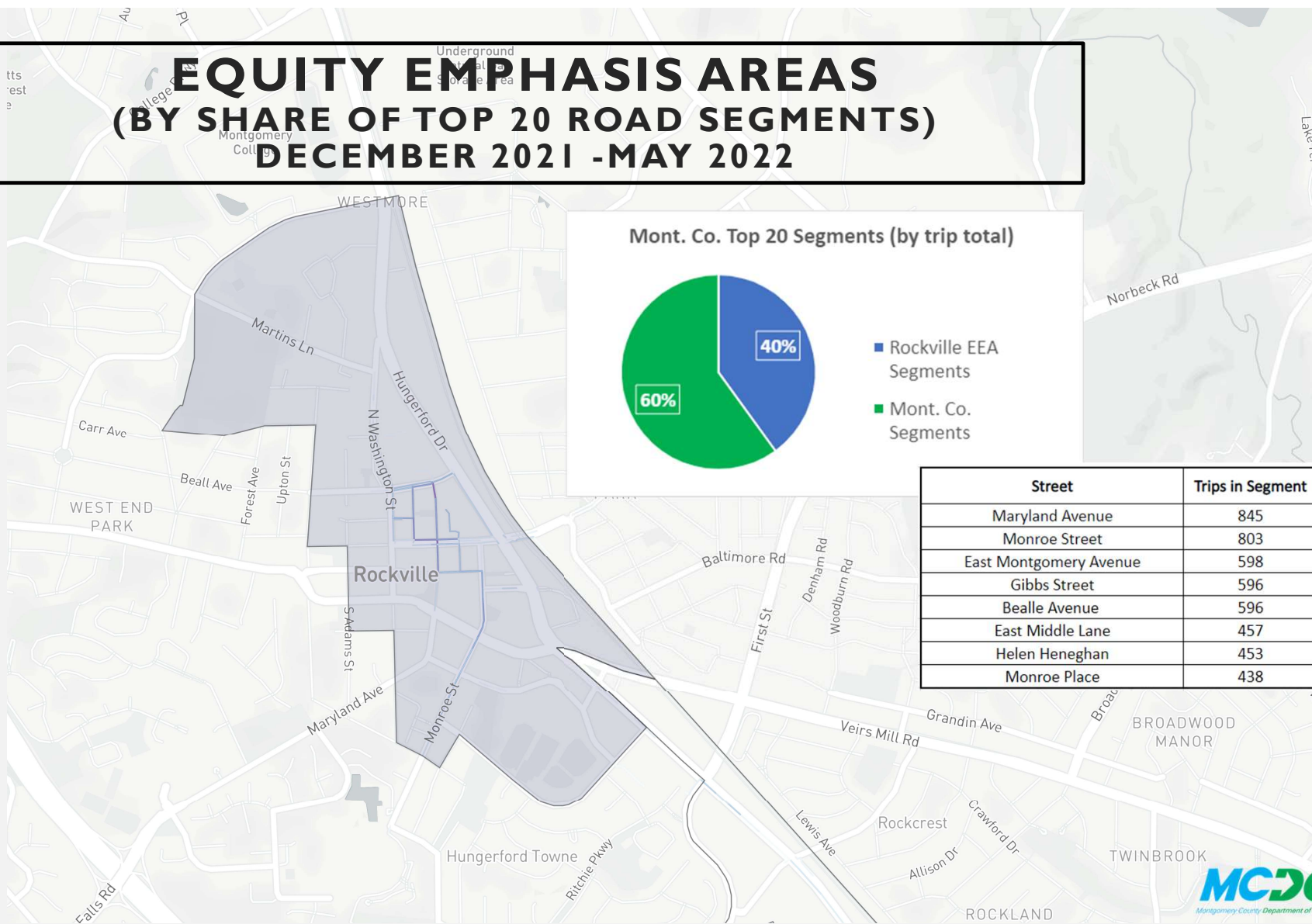
# EQUITY EMPHASIS AREAS (BY SHARE OF TOP 20 ROAD SEGMENTS) DECEMBER 2021 - MAY 2022

Mont. Co. Top 20 Segments (by trip total)

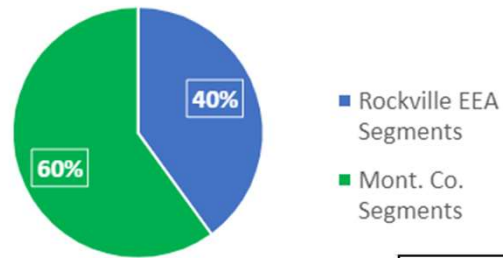


Street	Trips in Segment
Silver Spring Greenway	597
Colesville Road	463
Fenton Street	449
Wayne Avenue	442

# EQUITY EMPHASIS AREAS (BY SHARE OF TOP 20 ROAD SEGMENTS) DECEMBER 2021 -MAY 2022



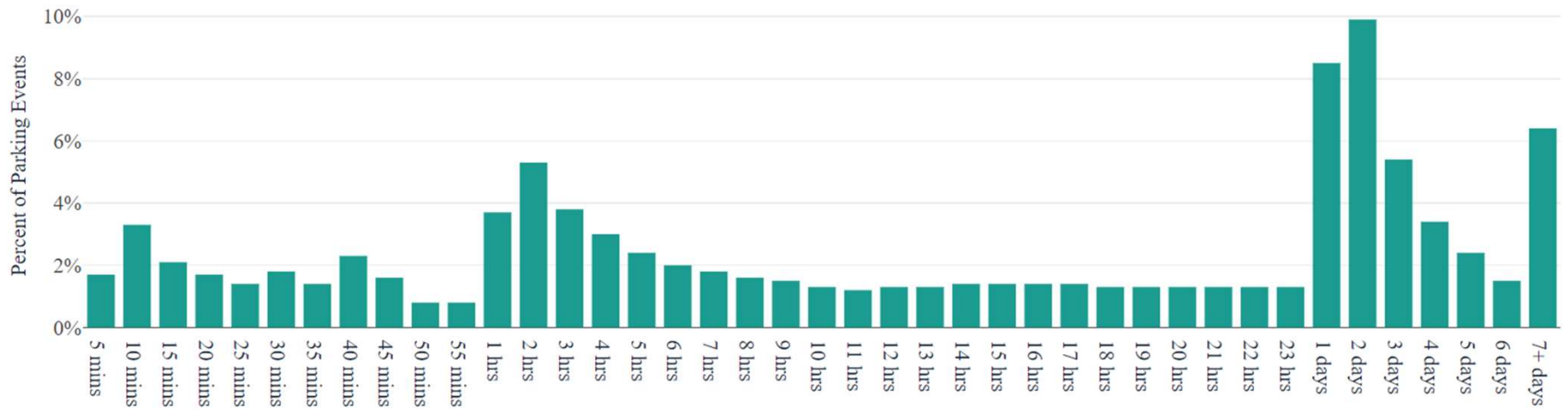
Mont. Co. Top 20 Segments (by trip total)



Street	Trips in Segment
Maryland Avenue	845
Monroe Street	803
East Montgomery Avenue	598
Gibbs Street	596
Bealle Avenue	596
East Middle Lane	457
Helen Heneghan	453
Monroe Place	438

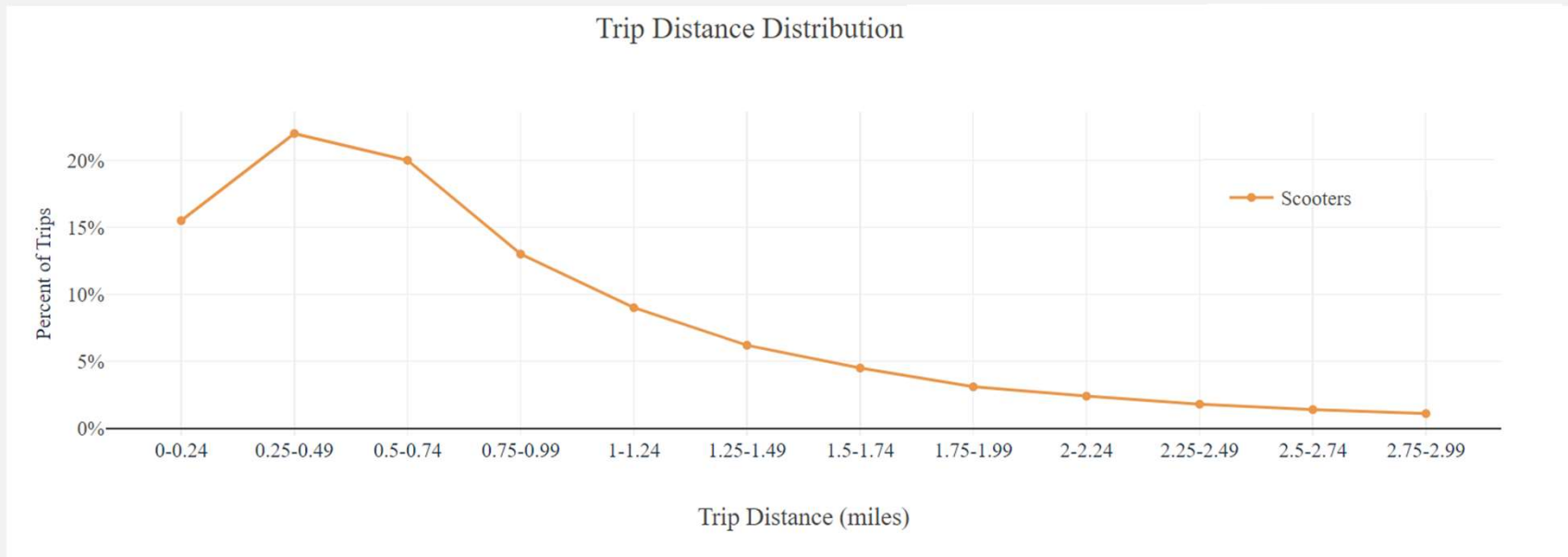
# PARKING DURATION

Dockless Parking Distribution



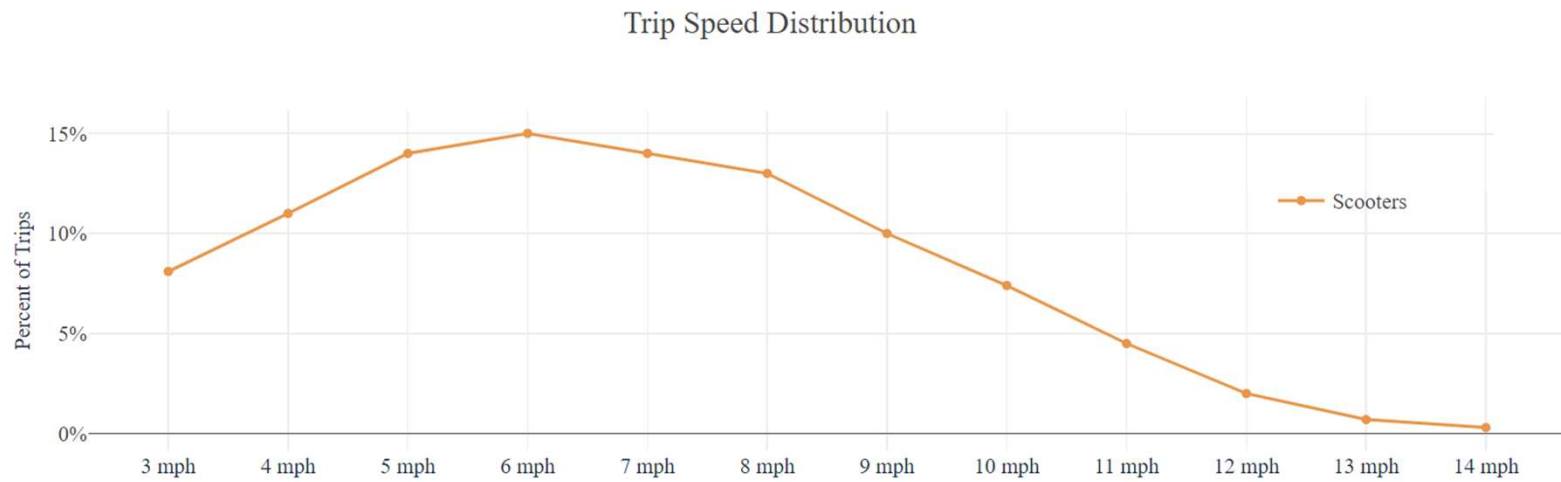
(DATE RANGE UNAVAILABLE)

# AVERAGE SCOOTER DISTANCE PER TRIP





# AVERAGE SCOOTER SPEED PER TRIP



(DATE RANGE UNAVAILABLE)

## PROVISIONS OF A PERMANENT PROGRAM UNDER CONSIDERATION

- Establish a permanent program with several changes to pilot under consideration:
  - Fees: Basis for charges, fee scale, how to implement with vendors
  - Parking: Parking requirements (e.g., consider use of lock-to for secure scooter parking, enforcement of No Parking zones)
  - Service areas: Allow County-wide or just in certain areas
- Expand scooter corral program – funding and implementation
- Hours of operations – consider eliminating restrictions & allow 24/7
- Examine prohibition on sidewalk riding and potential exceptions to the rule
  - E.g. Six-lane roadways with speed limits greater than 35 mph
- Continued expansion of shared-use paths and bike/micromobility infrastructure and routes

# CUSTOMER SERVICE

- Vendors of dockless vehicles primarily responsible
  - Contact information on each dockless vehicle
  - Access from mobile app for riders
  - Customer service phone number
  - Track, address and report complaints
- County
  - County 311
  - Commuter Services

# QUESTIONS ?

## General Contact Information

### Montgomery County Commuter Services

Department of Transportation  
Office of Transportation Policy  
101 Monroe Street, 10<sup>th</sup> Floor  
Rockville, MD 20850

[www.montgomerycountymd.gov/commute](http://www.montgomerycountymd.gov/commute)



Bikeshare, E-Bike, E-Scooter Info:

[www.montgomerycountymd.gov/bikeshare](http://www.montgomerycountymd.gov/bikeshare)

## MCDOT Contacts

**Chris Conklin, Director**

[Chris.Conklin@montgomerycountymd.gov](mailto:Chris.Conklin@montgomerycountymd.gov)

(240) 777-7198

**Tim Cupples, Acting Deputy Director for Transportation Policy**

[Tim.Cupples@montgomerycountymd.gov](mailto:Tim.Cupples@montgomerycountymd.gov)

(240) 777-7214

**Gary Erenrich, Special Assistant to the Director**

[Gary.Erenrich@montgomerycountymd.gov](mailto:Gary.Erenrich@montgomerycountymd.gov)

(240) 777-7156

**Sandra L. Brecher, Chief, Commuter Services Section**

[Sandra.Brecher@montgomerycountymd.gov](mailto:Sandra.Brecher@montgomerycountymd.gov)

(240) 777-8383