
How Safe Are Our Roads?



Annual Data Report on the Impact of Drunk Driving on
Road Safety in the Washington D.C. Metropolitan Region
December 2010



Metropolitan Washington
Council of Governments



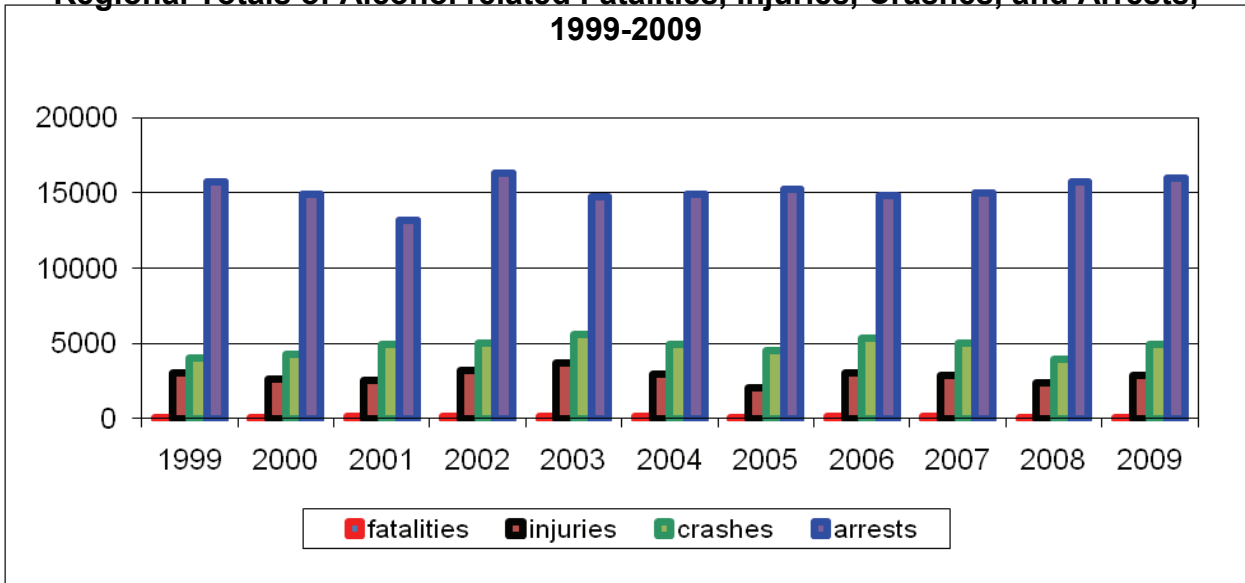
WRAP



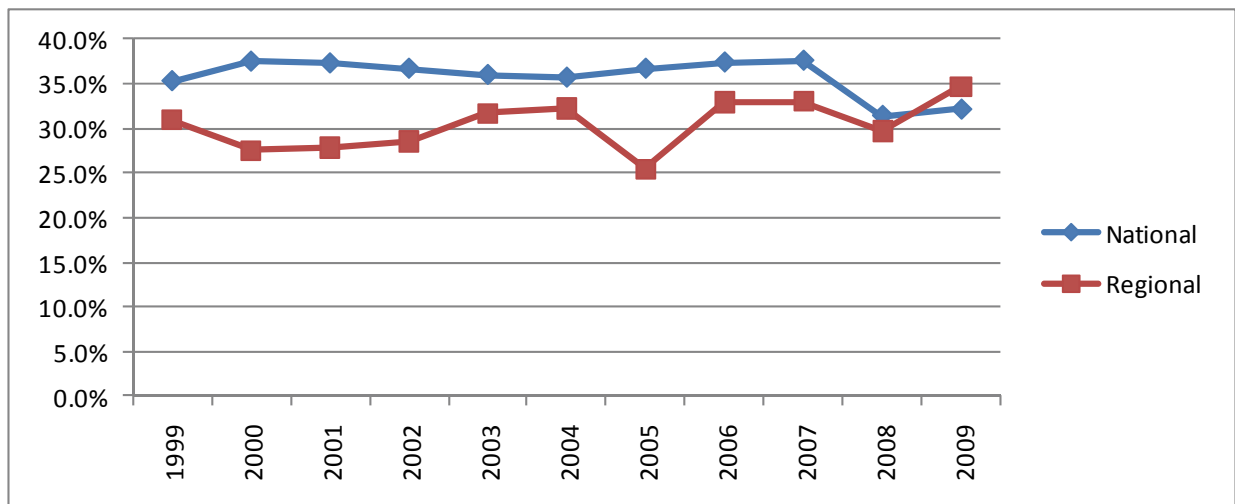
2010 How Safe Are Our Roads?

A Look at Regional and National Figures

Regional Totals of Alcohol related Fatalities, Injuries, Crashes, and Arrests, 1999-2009



National and Regional Percentages of Alcohol Related Fatalities, 1999-2009



*Source, National Highway Traffic Safety Administration

The region has experienced an increase in the overall number of alcohol related arrests, injuries and crashes from 2008 to 2009 while total number of alcohol related traffic fatalities remained unchanged.

Unless indicated otherwise, all photos from WRAP's June 2010 "DUI 101" event at the Fairfax County Criminal Justice Academy's Emergency Vehicle Operations Center



WRAP



2010 How Safe Are Our Roads?

How Safe Are Our Roads? - 2009 Overview

Findings in the 2010 report include:

FATALITIES...Local alcohol and or drug-related traffic deaths *remained unchanged* between 2008 and 2009 (92 such fatalities each year.) Such negates a previous, two-year consecutive decline in such deaths occurring in the Greater Washington area.

CRASHES...Area traffic crashes attributed to alcohol and or drugs *increased* by more than 24-percent (24.7%) between 2008 and 2009 (and from 3,946 to 4,921 such crashes). Such negates a previous, two-year consecutive decline in such crashes deaths occurring in the Greater Washington area.

INJURIES...Local alcohol and or drug-related traffic injuries also *increased* by over 20-percent (20.9%) between 2008 and 2009 (and from 2,352 to 2,843 such injuries). Such negates a previous, two-year consecutive decline in such crashes deaths occurring in the Greater Washington area.

ARRESTS...Local arrests for either driving under the influence (DUI) or driving while intoxicated (DWI) *increased* by nearly two-percent (1.7%) between 2008 and 2009 (and from 15,729 to 15,996 such arrests). Such represents the third consecutive year increase in such arrests being made in the Greater Washington area and the highest level of impaired driving arrests occurring in the Greater Washington area in seven years (2002:16,309 DUI/DWI arrests).

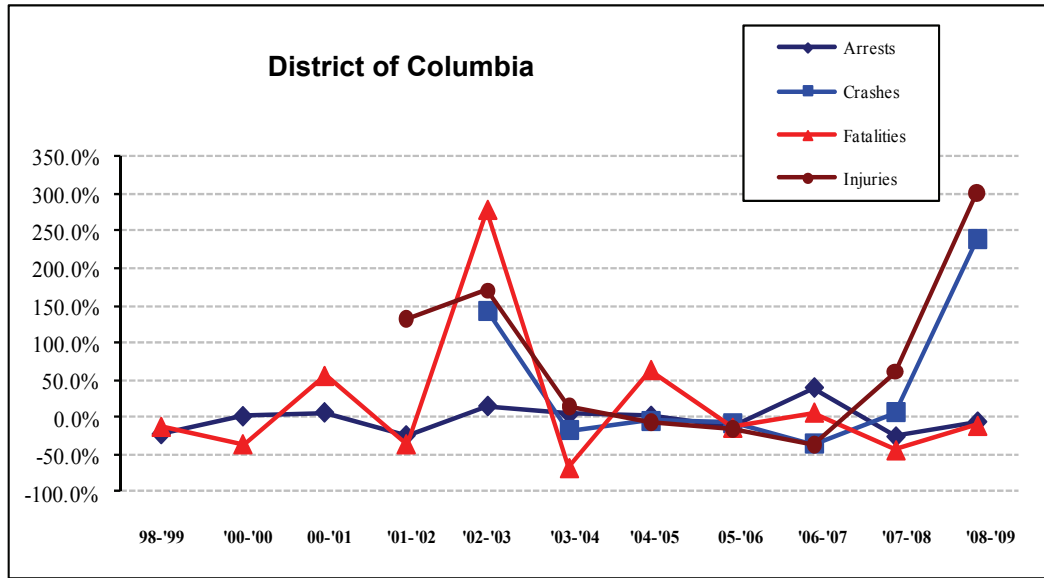
Of the Washington metropolitan area's 265 total traffic fatalities last year, over one-third (34.7%) of these roadway deaths were alcohol and or drug-related (BAC = .01+). 2009 national statistics (National Highway Traffic Safety Administration or NHTSA) show that 38-percent of total U.S. vehicular fatalities in 2009 were reported as alcohol / drug related (BAC = .01+)

Background

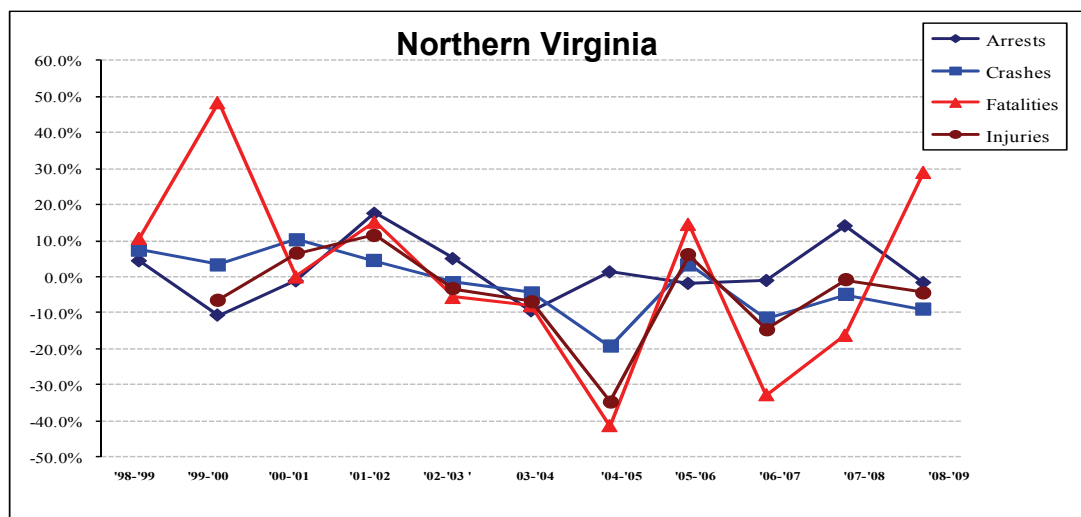
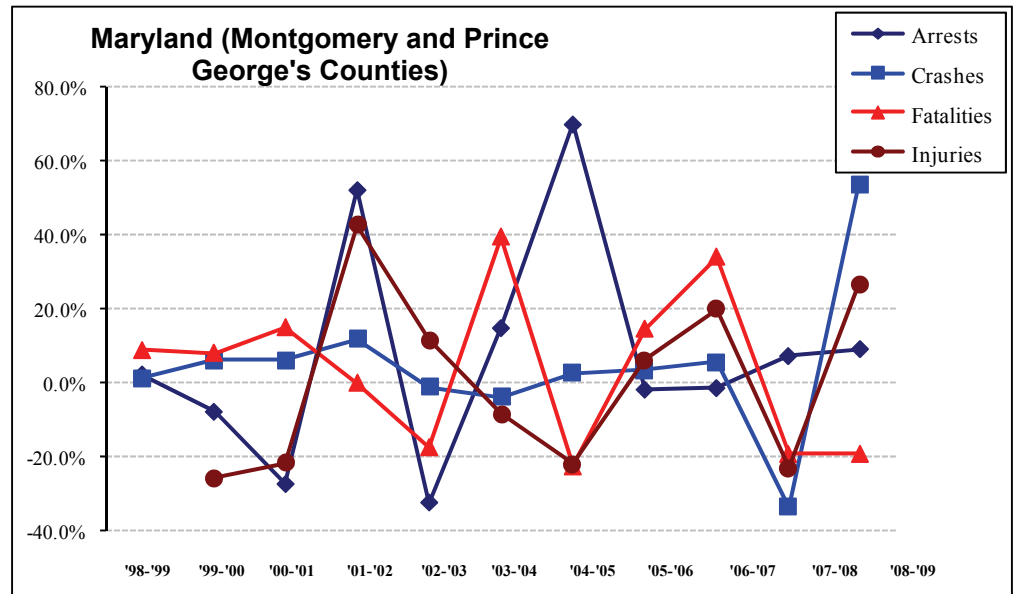
Data compiled in this report comes from national, state, and local sources including the U.S. Census Bureau, National Highway Traffic Safety Administration (NHTSA), and Virginia and Maryland Departments of Transportation. Primary data was collected from the local police departments of each jurisdiction.

It should be noted that the jurisdictional data in this report does not always include State Police data. The State Police in Maryland and Virginia are charged with enforcing traffic laws on state highways and interstate expressways; inclusion of this data would likely increase the number of incidents in all categories. It is possible that some jurisdictional data may include State Police figures because local police often respond to highway incidents when State Police are unavailable. In some jurisdictions, the data reported were provided by the state, and most likely include state police data.

Sub Regional Trends



High school students use WRAP's Fatal Vision goggles at Virginia's 2010 Youth Alcohol and Drug Abuse Prevention Project (YADAPP) conference.



Fatalities

Alcohol Related Traffic Fatalities by Jurisdiction, 1999-2009

	1999	2005	2006	2007	2008	2009	Percent Change	
							2008-2009	1999-2009*
District of Columbia	14	-	15	16	9	8	-11.1%	-42.9%
Maryland								
<i>State Total</i>	-	235	268	178	152			
Montgomery County	12	9	17	13	14	11	-21.4%	-8.3%
Prince George's County	25	32	30	50	38	31	-18.4%	24.0%
MD Regional Total	37	41	47	63	52	42	-19.2%	13.5%
Virginia								
<i>State Total</i>	364	347	307	397	354	316	-10.7%	-13.2%
Arlington County	2	0	1	3	3	1	-66.7%	-50.0%
Fairfax County	20	20	24	19	13	20	53.8%	0.0%
Loudoun County	1	3	5	0	5	6	20.0%	500.0%
Prince William County	7	4	22	12	9	10	11.1%	42.9%
City of Alexandria	1	0	0	1	1	1	0.0%	0.0%
City of Fairfax	0	0	3	1	0	1	N/A	N/A
City of Falls Church	0	0	0	0	0	0	N/A	N/A
City of Manassas	0	0	0	1	0	1	N/A	N/A
City of Manassas Park	0	0	0	0	0	0	N/A	N/A
Northern Virginia Total	31	27	55	37	31	40	29.0%	29.0%
DC Metro Regional Total	82	86	117	100	92	90	-2.2%	9.8%
National Parks in Region	-	3	2	0	0	2	N/A	0.0%
Regional Total Adjusted	82	89	119	100	92	92	0.0%	9.5%
National	14,790	15,985	15,970	13,041	11,711	10,839	-7.4%	-26.7%



*National data is based on most current ranking from the National Highway Traffic Safety Administration (<http://www.nhtsa.gov/>)

Total Traffic Fatalities by Jurisdiction, 1999-2009

	1999	2005	2006	2007	2008	2009	Percent Change	
							2008-2009	1999-2009
District of Columbia	46	49	41	54	40	33	-17.5%	-28.3%
Maryland								
<i>State Total</i>	-	614	651	614	591			
Montgomery County	49	38	57	49	52	40	-23.1%	-18.4%
Prince George's County	79	134	111	126	129	98	-24.0%	24.1%
MD Regional Total	128	172	168	175	181	138	-23.8%	7.8%
Virginia								
<i>State Total</i>	-	947	797	1,027	821	756	-7.9%	-17.3%
Arlington County	8	4	4	6	8	5	-37.5%	-37.5%
Fairfax County	49	61	67	48	29	37	27.6%	-24.5%
Loudoun County	11	20	19	22	11	13	18.2%	18.2%
Prince William County	24	23	46	27	24	16	-33.3%	-33.3%
City of Alexandria	4	2	1	5	3	1	-66.7%	-75.0%
City of Fairfax	0	2	3	2	0	2	N/A	N/A
City of Falls Church	0	0	0	0	0	1	N/A	N/A
City of Manassas	1	3	1	3	1	3	200.0%	200.0%
City of Manassas Park	1	0	0	0	0	0	N/A	-100.0%
Northern Virginia Total	98	115	141	113	76	78	2.6%	-20.4%
DC Metro Regional Total	272	336	350	342	297	249	-16.2%	-8.5%
National Parks in Region	-	15	13	9	13	16	23.1%	23.1%
Regional Total Adjusted	272	350	363	351	310	265	-14.5%	-2.6%
National	41,717	43,510	42,642	41,259	37,261	33,808	-9.3%	-19.0%



*National data is based on most current ranking from the National Highway Traffic Safety Administration (<http://www.nhtsa.gov/>)



Injuries

Alcohol Related Traffic Injuries in 2009



	Total Injuries	Alcohol Related Injuries	Percentage of Total Injuries that were Alcohol Related	Percent Change Alcohol Related Injuries, 2008-2009
District of Columbia	4,676	385	8.23%	301.0%
Maryland				
Montgomery County	6,758	497	7.4%	22.7%
Prince George's County	6,786	741	10.9%	29.5%
MD Regional Total	13,544	1,238	9.1%	26.7%
Virginia				
Arlington County	1,227	94	7.7%	-35.6%
Fairfax County	7,590	561	7.4%	-2.1%
Loudoun County	1,681	142	8.4%	1.4%
Prince William County	2,614	260	9.9%	-1.1%
City of Alexandria	816	65	7.9%	-27.0%
City of Fairfax	169	13	7.7%	62.5%
City of Falls Church	47	11	23.4%	450.0%
City of Manassas	327	35	10.7%	133.3%
City of Manassas Park	17	1	5.9%	0.0%
Northern Virginia Total	14,488	1,182	8%	-4.4%
DC Metro Regional Total	32,708	2,805	8.1%	21.4%
National Parks in Region	731	38	5.2%	-9.5%
Regional Total Adjusted	33,439	2,843	8%	20.9%

Total Traffic Injuries by Jurisdiction, 1999-2009

	1999	2005	2006	2007	2008	2009	Percent Change	
							2008-2009	1999-2009
District of Columbia	-	5,007	4,265	4,070	4,578	4,676	2.1%	-49.5%
Maryland	-							
Montgomery County	8,182	6,870	6,759	6,905	6,624	6,758	2.0%	-17.4%
Prince George's County	9,261	5,792	5,595	7,771	7,099	6,786	-4.4%	-26.7%
MD Regional Total	17,443	12,662	12,354	14,676	13,723	13,544	-1.3%	-22.4%
Virginia	-							
Arlington County	1,946	1,220	1,374	1,201	1,288	1,227	-4.7%	-36.9%
Fairfax County	9,117	6,582	8,537	8,019	7,964	7,590	-4.7%	-16.7%
Loudoun County	1,347	1,206	1,711	631	1,717	1,681	-2.1%	24.8%
Prince William County	2,984	2,586	3,341	2,624	2,717	2,614	-3.8%	-12.4%
City of Alexandria	1,407	853	1,317	1,403	1,492	816	-45.3%	-42.0%
City of Fairfax	333	205	315	241	201	169	-15.9%	-49.1%
City of Falls Church	146	180	240	40	141	47	-66.7%	-67.8%
City of Manassas	323	403	448	288	270	327	21.1%	1.2%
City of Manassas Park	80	23	43	18	20	17	-15.0%	-78.8%
Northern Virginia Total	17,682	13,258	17,326	14,465	15,810	14,488	-8.4%	-18.1%
DC Metro Regional Total	35,125	30,927	33,945	33,211	36,409	19,164	-43.8%	-6.9%
National Parks in Region	--	703	736	675	669	731	9.3%	-3.4%
Regional Total Adjusted	35,125	31,630	34,681	33,886	37,078	19,895	-42.8%	-6.8%

Crashes

Alcohol Related Traffic Crashes in 2009

	Total Crashes	Alcohol Related Crashes	Percentage of Total Crashes that were Alcohol Related	Percentage Change Alcohol-related Crashes, 2008-2009
District of Columbia	16,841	448	2.7%	239.4%
Maryland				
Montgomery County	12,311	1,055	8.6%	52.9%
Prince George's County	13,766	1,398	10.2%	54.5%
MD Regional Total	26,077	2,453	9.4%	53.8%
Virginia				
Arlington County	2,205	200	9.1%	-19.4%
Fairfax County	14,233	951	6.7%	-7.6%
Loudoun County	3,501	211	6.0%	-14.9%
Prince William County	5,148	379	7.4%	-7.6%
City of Alexandria	1,613	99	6.1%	-4.8%
City of Fairfax	678	36	5.3%	38.5%
City of Falls Church	249	11	4.4%	57.1%
City of Manassas	547	43	7.9%	-8.5%
City of Manassas Park	42	2	4.8%	-66.7%
Northern Virginia Total	28,216	1,932	6.8%	-9.1%
DC Metro Regional Total	71,134	4,833	6.8%	25.5%
National Parks in Region	2,874	88	3.1%	-6.4%
Regional Total Adjusted	74,008	4,921	5.8%	24.7%



Source: Jurisdictional contacts, see specific contact in Methodology

Total Traffic Crashes by Jurisdiction, 1999-2009

	1999	2004	2005	2006	2007	2008	2009	Percent Change	
								2008-2009	1999-2009
District of Columbia	--	18,490	17,717	16,478	15,100	16,147	16,841	4.3%	-7.8%
Maryland									
Montgomery County	12,779	13,053	12,235	12,076	12,460	11,980	12,311	2.8%	-3.7%
Prince George's County	14,226	15,901	16,349	15,863	15,060	14,266	13,766	-3.5%	-3.2%
MD Regional Total	27,005	28,954	28,584	27,939	27,520	26,246	26,077	-0.6%	-3.4%
Virginia									
Arlington County	3,378	3,584	3,383	2,984	2,649	2,596	2,205	-15.1%	-34.7%
Fairfax County	17,913	18,728	18,363	18,254	17,152	16,318	14,233	-12.8%	-20.5%
Loudoun County	2,685	3,824	5,718	4,234	5,720	3,828	3,501	-8.5%	30.4%
Prince William County	4,895	5,492	5,648	7,132	5,852	5,520	5,148	-6.7%	5.2%
City of Alexandria	2,319	2,274	2,193	2,019	1,947	1,868	1,613	-13.7%	-30.4%
City of Fairfax	713	1,124	1,137	926	817	616	678	10.1%	-4.9%
City of Falls Church	309	283	196	240	243	177	249	40.7%	-19.4%
City of Manassas	689	923	948	931	725	622	547	-12.1%	-20.6%
City of Manassas Park	181	114	136	111	73	65	42	-35.4%	-76.8%
Northern Virginia Total	33,082	36,346	37,722	36,831	35,1781	31,610	28,216	-10.7%	-14.7%
DC Metro Regional Total	60,087*	83,790	84,023	81,248	77,798	74,003	71,134	-3.9%	18.4%
National Parks in Region	--	3,186	2,896	2,945	2,669	2,568	2,874	11.9%	0.9%
Regional Total Adjusted	60,087	86,976	86,919	84,193	80,467	76,571	74,008	-3.3%	17.6%

*Regional totals do not include jurisdictions with missing data.

Arrests

Total Alcohol Related Driving Arrests by Jurisdiction, 1999-2009

	1999	2005	2006	2007	2008	2009	Percent Change	
							2008-2009	1999-2009
District of Columbia	1,828	1,807	1,600	2,224	1,655	1,555	-6.0%	-14.9%
Maryland								
Montgomery County	4,599	3,559	3,714	3,487	3,854	4,323	12.2%	-6.0%
Prince George's County	2,315	1,927	1,667	1,814	1,831	1,879	2.6%	-18.8%
MD Regional Total	6,914	5,486	5,381	5,301	5,685	6,202	9.1%	-10.3%
Virginia								
Arlington County	921	574	688	647	677	614	-9.3%	-33.3%
Fairfax County	2,858	3,015	2,769	2,586	3,148	2,897	-8.0%	1.4%
Loudoun County	304	694	616	690	818	820	0.2%	169.7%
Prince William County	1,967	1,611	1,794	1,935	2,199	2,262	2.9%	15.0%
Alexandria City	346	425	479	567	515	480	-6.8%	38.7%
Fairfax City	269	268	167	184	181	187	3.3%	-30.5%
Falls Church City	47	34	54	48	67	91	35.8%	93.6%
Manassas City	208	219	218	160	110	171	55.5%	-17.8%
Manassas Park City	45	110	106	178	60	124	106.7%	169.6%
Northern Virginia Total	6,965	6,950	6,891	6,995	7,775	7,646	-1.7%	9.8%
DC Metro Regional Total	15,707	14,243	13,872	14,520	15,115	15,403	1.9%	-1.9%
National Parks in Region	-	989	974	634	614	593	-2.9%	28.9%
Regional Total Adjusted	15,707	15,232	14,846	15,154	15,729	15,996	1.7%	1.8%

*Regional totals do not include jurisdictions with missing data.



Methodology

Following is a listing of the agencies providing local jurisdictional data:

District of Columbia:

- Metropolitan Police Department
- U.S. Park Police
- Maryland

State of Maryland:

- Maryland State Police
- Prince George's County Police Department
- Montgomery County Department of Police

Virginia:

- State of Virginia: Virginia Department of Motor Vehicles, 2009 Crash Facts
- Arlington County Police Department
- Fairfax County Police Department
- Loudoun County Sheriff's Office
- Prince William County Police Department
- City of Alexandria Police Department
- City of Fairfax Police Department
- City of Falls Church Police Department
- City of Manassas Police Department
- City of Manassas Park Police Department

Data Analysis

The findings in this report are based on data collected from organizations and agencies from across the Washington Metro region. Data tables provide totals within the Washington Metro region as well as individual jurisdictions. Analysis focuses on changes in motor vehicle fatalities, injuries, crashes, and arrests. Results are reported as numbers and percentage of alcohol-related incidents to total numbers across time.

Data Limitations

It is important to note limitations that affected collection and analysis of this data, as they may limit comparability across jurisdictions and influence the level of reasonable analysis. Whenever possible, limitations are noted within the tables and figures. It is important that the reader keep the following in mind:

It should be noted that Montgomery County, Maryland has recently changed and enhanced their database system. While these changes allow them to capture data more accurately, comparisons to previous year's data should be made with caution. In addition, because this report tracks just two jurisdictions in Maryland, regional totals could also be affected.

There is no standardization for data definitions, collection, or recording within the Washington Metro region. Each agency has its own system of data collection, coding, and management. In addition, the range and type of data collected may not be consistent across jurisdictions. The data reported and analyzed in this report reflect data as reported by contact agencies. Independent verification of data to ensure accuracy is not within the scope of this report.

Information on data collection and management systems and changes within jurisdictions was not solicited. In addition, changes in laws or judicial priorities may result in increased attention to specific data (e.g. blood alcohol level in driver fatalities related to stricter server laws). In some cases, this may result in missing data or data that appears inconsistent when examined against the same values for previous years. It is beyond the scope of this report to identify data methodology or priority changes for each jurisdiction.

Data on impaired driver involvement in motor vehicle fatalities, injuries, crashes and arrests was requested for alcohol-impairment only. Therefore, data are assumed to reflect only alcohol impairment and are reported in this way, although some cases may involve drug use.

The number of incidents, total and related to alcohol impairment, is very small for some jurisdictions. Due to the small numbers, jurisdictional analysis might easily misrepresent the problem. For example, an increase of one alcohol-related fatality would have little impact in a jurisdiction that saw 50 alcohol-related fatalities the previous year, but would appear to represent a significant change in a small jurisdiction with only one or two alcohol-related fatalities the previous year.

Data are reported and analyzed by absolute numbers only. At this time, information that would allow identification of comparable rates is unavailable. It is assumed that people involved in motor vehicle crashes and arrests may live within or outside the Washington Metro region. Collection of data on driver or passenger residence versus jurisdiction of accident is beyond the scope of this report. Calculating rates based on the Washington Metro region's population or number of licensed drivers would not accurately represent the problem since drivers may be from outside the jurisdiction.

Data on people under the age of 21 years is collected in an inconsistent manner among jurisdictions. Caution must be used in evaluation of this data due to varied definitions and missing data.

Many charts display two regional total numbers. The first, "DC Regional Total" is the total of the District of Columbia, the Maryland Region, and the Northern Virginia Region. The second regional number, "Regional Total Adjusted" includes data from the United States Park Police. Because the Park Police information has only been recently collected, it is shown separately and the two regional totals are shown so that comparisons with previous years can be done.

