

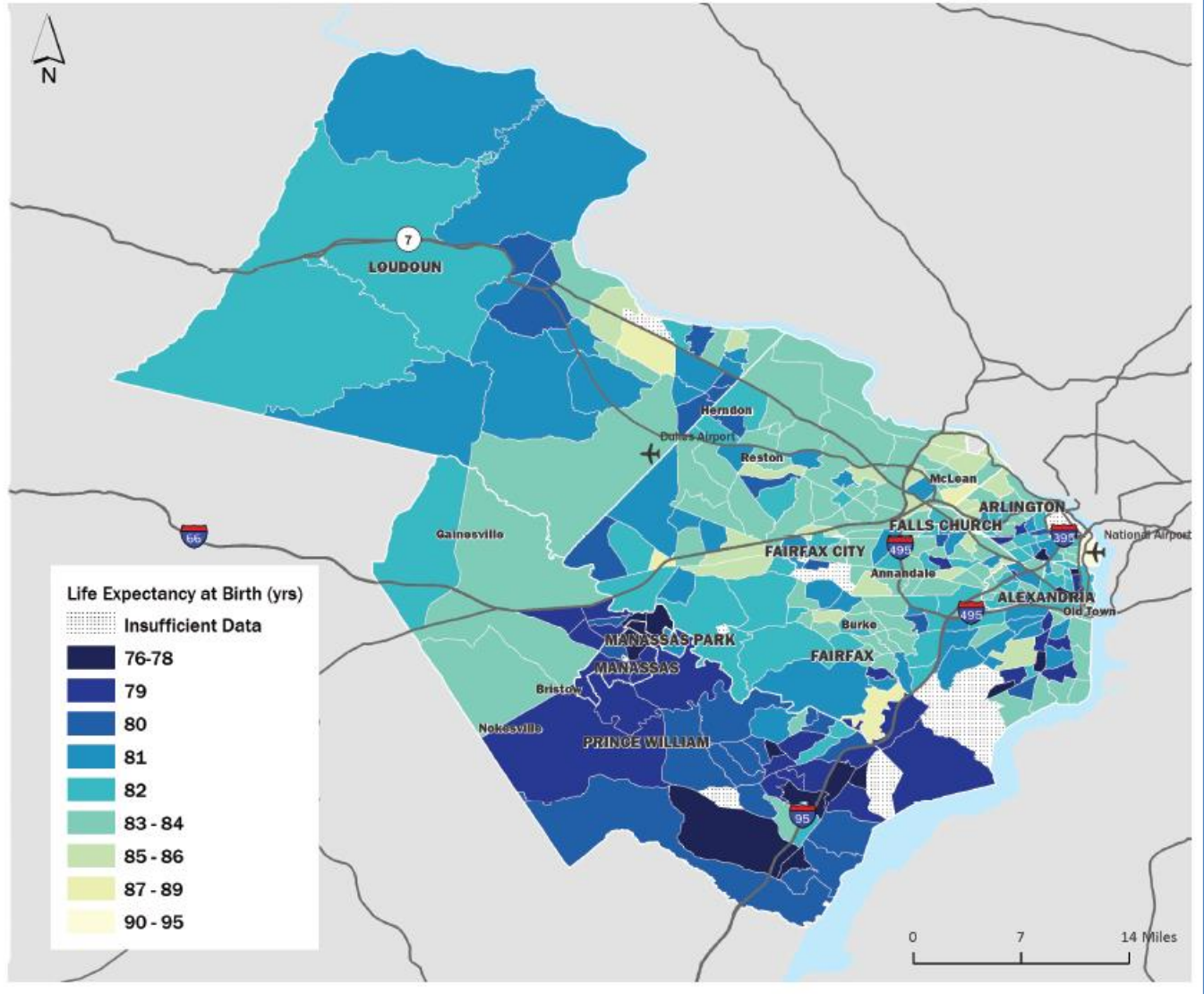
Health Officials Committee Region Forward Health Indicators Project

Steven H. Woolf, MD, MPH
Derek A. Chapman, PhD
Center on Society and Health
Virginia Commonwealth University

Region Forward Health Goal

Health Goal	
We seek communities in which every person enjoys health and well-being	
Proposed Target #1	Proposed Target #2
Human health, including the health of subgroups, is increasingly considered as a component in the development and evaluation of all policies, plans, and projects.	All residents, including subgroups, enjoy continuous improvement in the quality and duration of their lives.
Proposed Indicator for #1	Proposed Indicators for #2
Number of jurisdictions adopting a model, example of, or framework to consider health in all policy-making decisions	Life Expectancy
	<u>Quality of Life</u>

Life Expectancy at Birth (years)



A Study in Contrasts: Why Life Expectancy Varies In Northern Virginia

A Report by the Center on Society and Health
Virginia Commonwealth University

Supported by the Northern Virginia
Health Foundation



Steven H. Woolf, MD, MPH
Derek A. Chapman, PhD
Jong Hyung Lee, MS
Lauren Kelley, MPH
Steven A. Cohen, DrPH, MPH

 Center on Society and Health

 Northern Virginia
Health Foundation

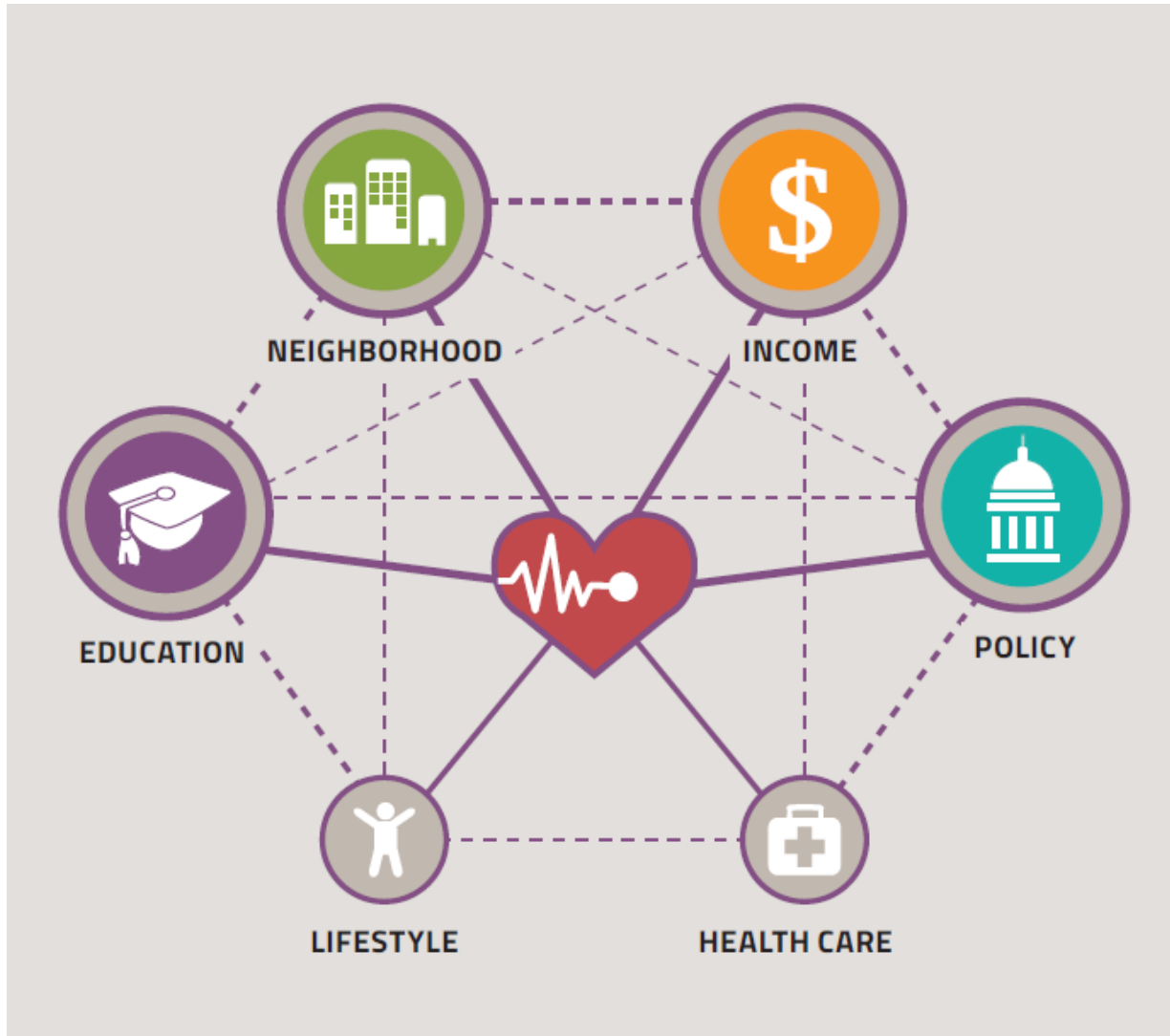
JUNE 2016

 Center on Society and Health

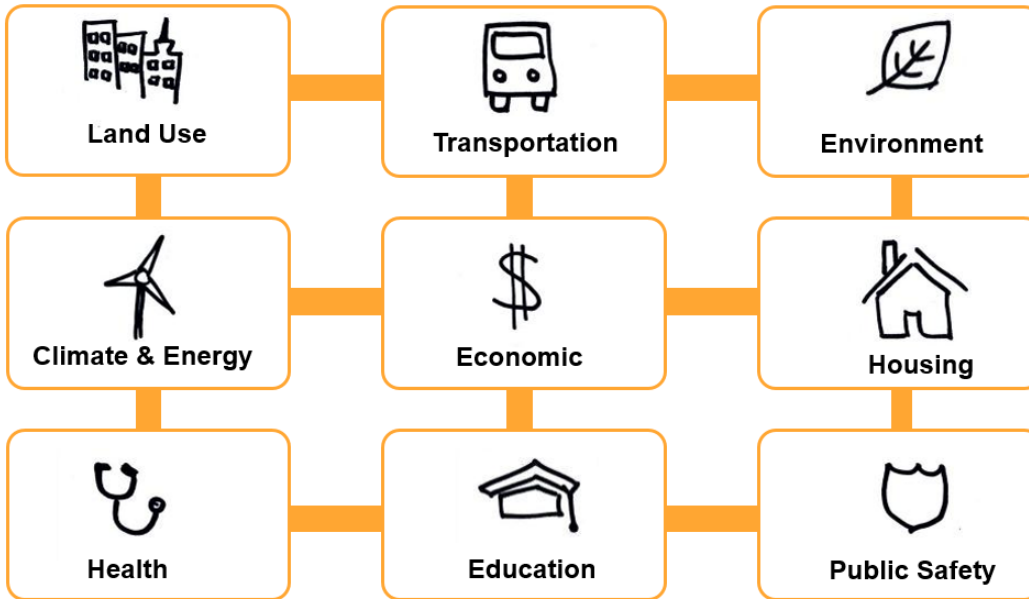
Region Forward Health Goal

Health Goal	
We seek communities in which every person enjoys health and well-being	
Proposed Target #1	Proposed Target #2
Human health, including the health of subgroups, is increasingly considered as a component in the development and evaluation of all policies, plans, and projects.	All residents, including subgroups, enjoy continuous improvement in the quality and duration of their lives.
Proposed Indicator for #1	Proposed Indicators for #2
Number of jurisdictions adopting a model, example of, or framework to consider health in all policy-making decisions	Life Expectancy Measures
	Number of Poor Physical Health Days
	Number of Poor Mental Health Days

Connecting the Dots



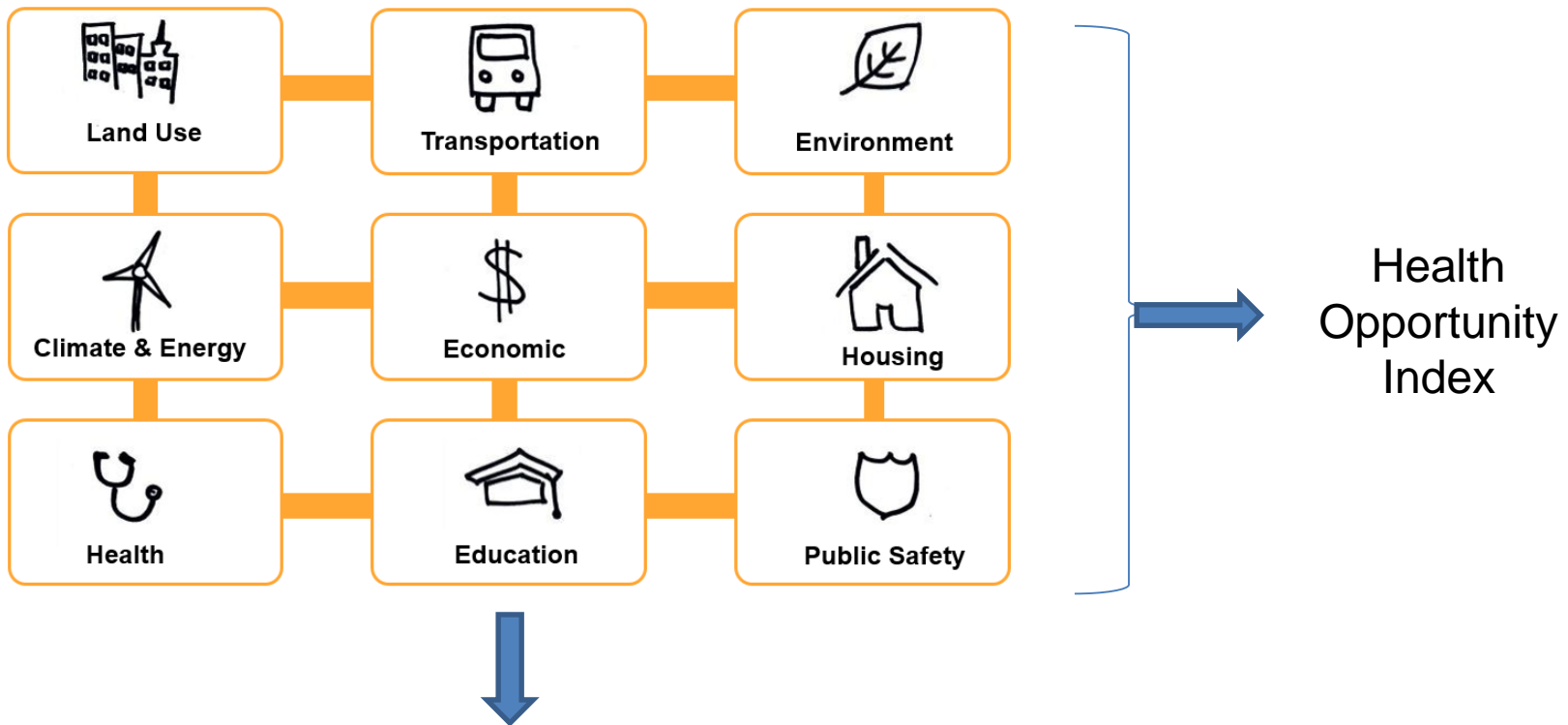
Quality of Life



Region Forward Goal areas characterize:

- Quality of life
- Wellbeing
- “Social determinants of health”

Quality of Life

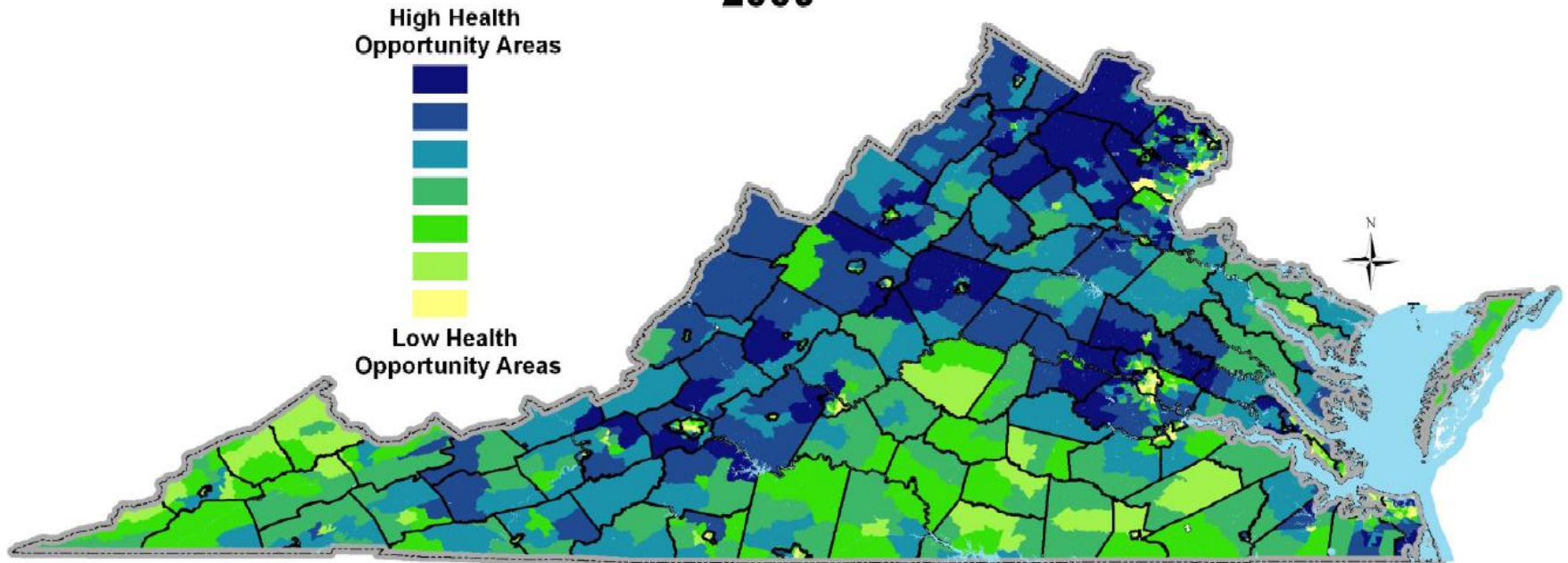


Data analysis and mapping of (1) Region Forward Indicators and (2) HOI to characterize quality of life in metropolitan Washington and **identify geographic areas of need**

Health Opportunity Index

Virginia

Health Opportunity Index (HOI) *
By Census Tracts
2009 **



Health Indicators Project

- Phase I (Year 1):
 - Issue brief
 - Maps (year 1)
- Phase II (Year 2):
 - Data consultation
 - Web-based interactive tool

Phase I Deliverables

Issue brief: a discussion of life expectancy and quality of life (i.e., Region Forward indicators) across the region, to include:

- A Health Opportunity Index (HOI) cover image spanning the entire MWCOG region
- Narrative discussion of factors that shape health and how they vary by geography
- Specific examples from DC and suburban census tracts
- Updated DC Metro map
- Selected “zoom in” maps of life expectancy or HOI in specific areas
- Detailed **geospatial maps*** of:
 1. The District of Columbia
 2. Charles County, MD
 3. Frederick County, MD (plus City of Frederick)
 4. Montgomery County, MD (plus Gaithersburg, Rockville, and Tacoma Park)
 5. Prince Georges County, MD (plus Bladensburg, Bowie, College Park, and Greenbelt)
 6. Arlington County, VA and Alexandria
 7. Fairfax County, VA (plus Fairfax City and Falls Church)
 8. Loudoun County, VA
 9. Prince William County, VA (plus Manassas and Manassas Park)

*Will total 72 electronic ARC-GIS maps: life expectancy (N=9), 6 Region Forward domains (Economic, Environment, Housing, Transportation, Education, and Public Safety) (N=54), and the Health Opportunity Index (N=9)

Policy opportunities

- Identify pockets of need
- Develop synergy across Region Forward sectors
- Leverage investments in strategic solutions
- Create data platform for Health Officials Committee
- Establish benchmarks for tracking progress

Contact Information

The VCU Center on Society and Health is an academic research center working to connect the dots between social factors and health.

Steven H. Woolf, MD, MPH

Derek A. Chapman, PhD

Center on Society and Health

Virginia Commonwealth University

Phone: 804-628-4055

Email: Steven.Woolf@vcuhealth.org; Derek.Chapman@vcuhealth.org

Website: www.societyhealth.vcu.edu