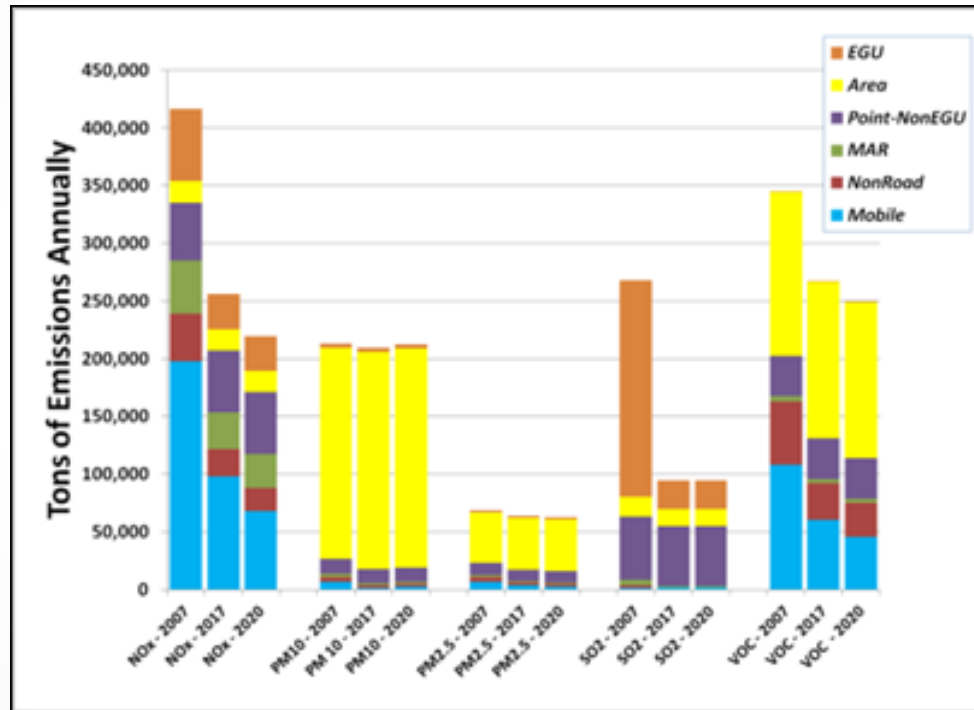
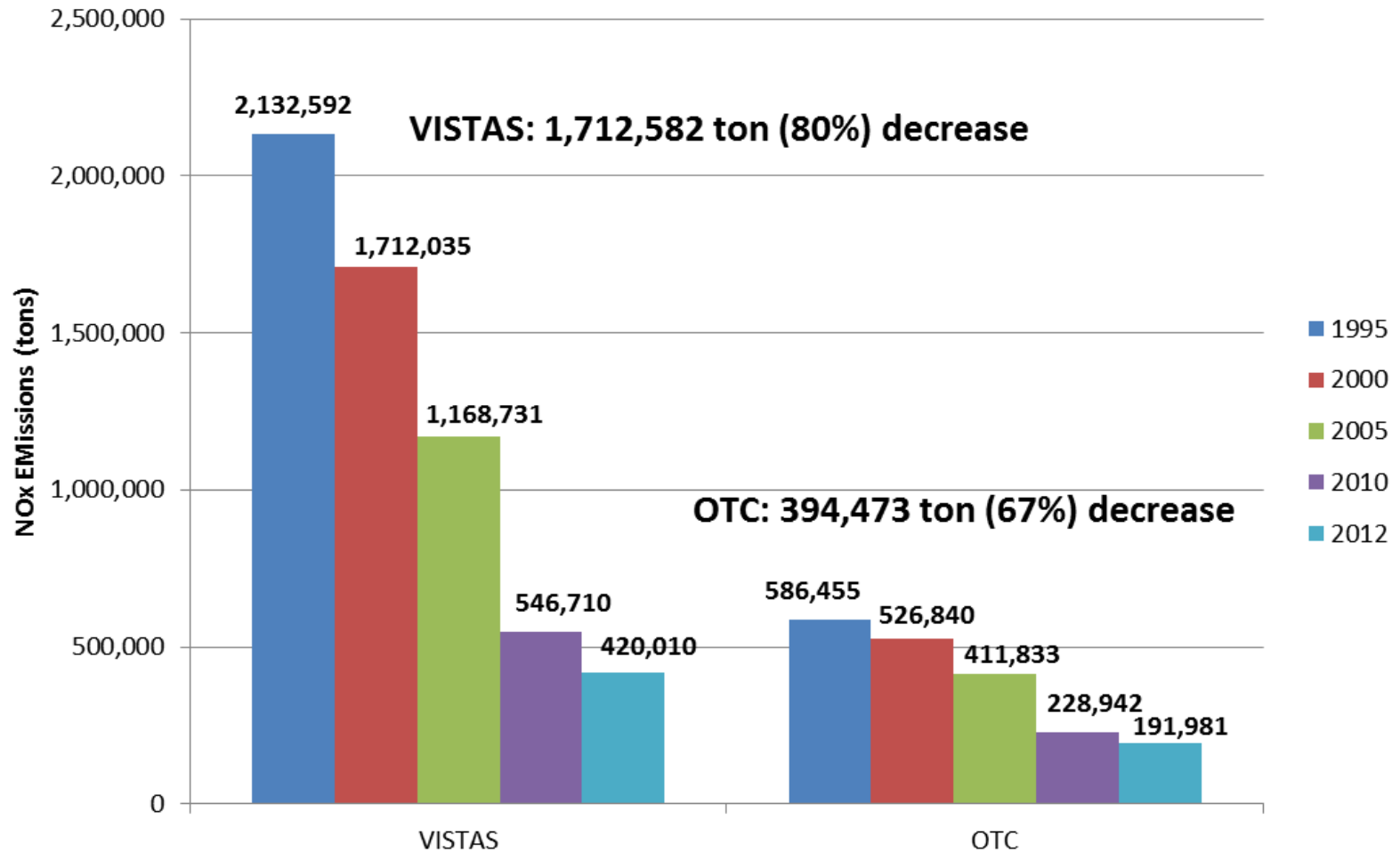


# Virginia Emissions Reductions

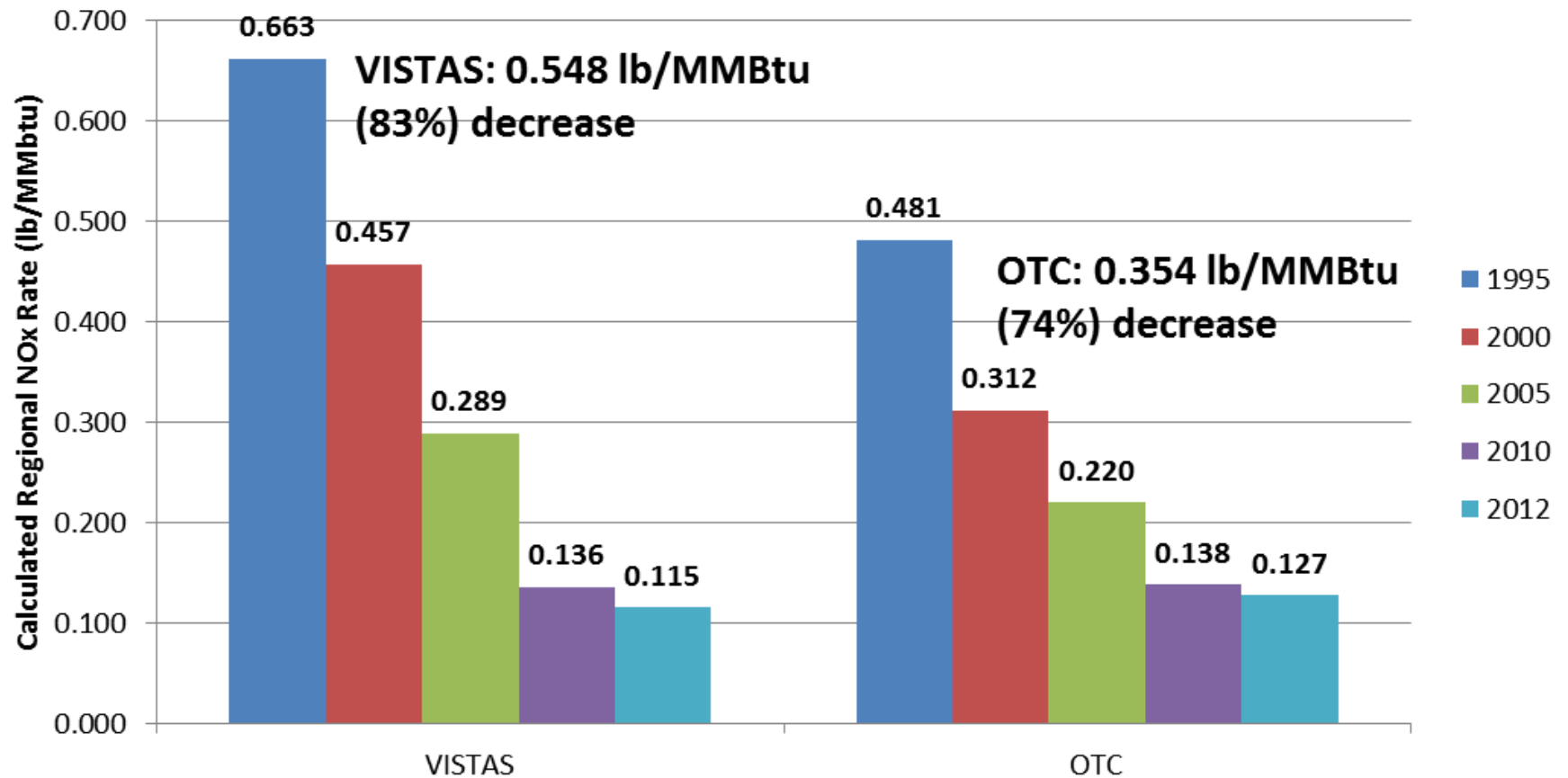


This analysis does NOT include the 8,000 tons of NOx reductions, or thereabouts, that are expected from the Honeywell permit, and the new boiler projects at Invista and Celco.

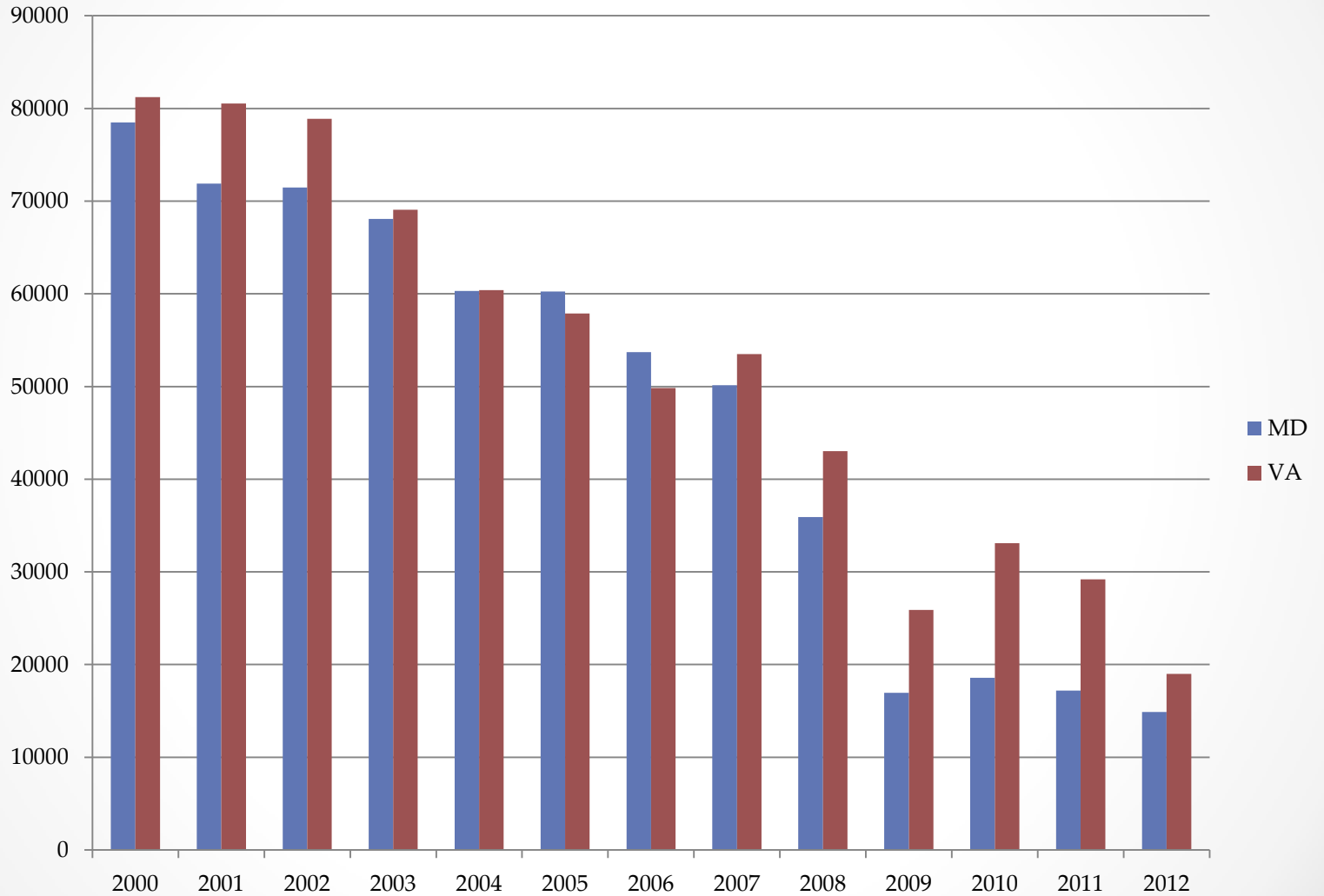
## VISTAS and OTC - EPA CAMD NOx Emissions 1995, 2000, 2005, 2010 and 2012



**VISTAS and OTC Calculated NO<sub>x</sub> Rate (lb/MMBtu) =  
(Total NO<sub>x</sub> tons\*2000 lb/ton)/Total Heat Input (MMBtu)  
1995, 2000, 2005, 2010 and 2012: data downloaded from EPA CAMD**



# Power Plant NOx Emissions Trends



# NOX Emission Rate Trends

