



CHAMPIONING TRAFFIC INCIDENT MANAGEMENT IN THE NATIONAL CAPITAL REGION

The Las Vegas and Southern Nevada Experience

Brian Hoeft FAST-Las Vegas

Discussion Topics

- Quick overview of Southern Nevada and our TIM Coalition
- Agencies, Activities and Features of our TIM
- Operating Environment
- Progress—Past, Present & Future
 - Emphasis on collecting, compiling, & analyzing data to address incident management challenges



TRANSIT



**TRANSPORTATION
PLANNING & FUNDING**



**TRAFFIC MANAGEMENT
SYSTEMS**







TIM Coalition Meetings:
10/18/2016 - Reno
10/19/2016 - Tonopah
10/20/2016 - Las Vegas

Upcoming Meetings

- Home
- About Us
- TIM initiatives
- News & Traffic
- Learning Center
- Calendar
- Contact Us
- Login



Las Vegas Freeway crash from the front showing the massive traffic queue back up.

TIM Facts

dent that occurs as a result of congestion or distraction from a prior crash is referred to as a secondary accident. Exact figures on the



TIM TRAINING

Multi-agency, multi-disciplinary training for various aspects of traffic incident



Who we are

Nevada TIM Coalition provides a forum for discussions, incident debriefings, state and regional policies and procedures in order to enhance coordinated response time for safe, quick removal of incidents from the roadway. TIM meetings are open to TIM Coalition members.

There are TIM Coalition(s) in [Northern Nevada](#), [Southern Nevada](#) and rural TIM coalitions (newly formed) in [Winnemucca](#), [Elko](#), Ely and Tonopah. If you are an incident responder, a member of any of the following types of agencies, please contact us:

- Nevada Department of Transportation
- State of Nevada Department of Public Safety
- Law Enforcement (City and County)
- Fire and Rescue (City, County and Volunteer)
- Local Ambulance Agencies
- Local Emergency Management Offices / Services
- Public Works (City, County and Native American)
- Environmental Agencies, Hazardous Materials Responders (private and public)
- Towing and Recovery
- Federal Highway, Homeland Security and Federal Transit Administration
- Media and Agency Public Information Officers

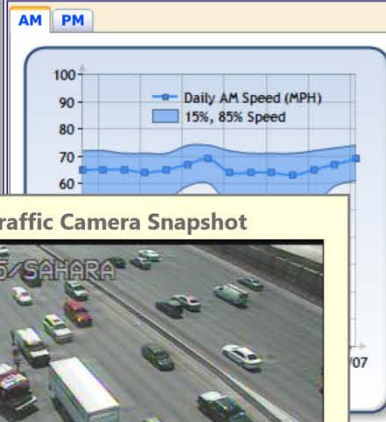
Involvement from all levels of personnel is crucial to building and maintaining a strong TIM program in Nevada.



Live Traffic Map Yesterday User Defined Chrome Users Check This



Daily Peak Speeds



Freeway Performance Report (Historical)



Live Traffic Camera Snapshot

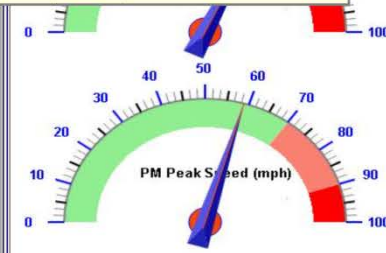
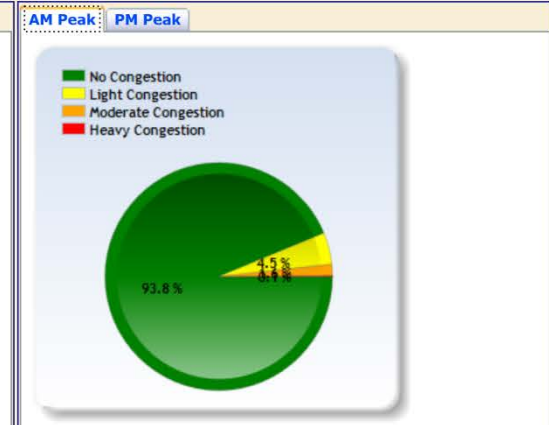
104 I-15 SAHARA SOUTH

CCTV104 I-15/Sahara

View the [camera snapshot wall](#) and [individual camera](#).

Close

Congestion





Briefing Room

Press Releases

Blog

Press Offices

Speeches

DOT Social Media

Comment Policy

Home > Briefing Room > Fastlane

JUN
3 **DOT Data Innovation Challenge attracts talented field**

Posted by Victor Mendez

In February, Secretary Foxx launched DOT's Data Innovation Challenge, a three-month quest to see what app developers could do to improve transportation by taking advantage of new access to multiple sources of transportation data. Today, I'm happy to announce the results of our challenge. While we had numerous submissions, we narrowed the field down to three final winners.



Search Blog:

Subscribe:



Classic Quick Clear Example



2:55 pm, **crash occurs**



2:58 pm, **FSP arrives**



2:59 pm



2:59 pm



3:00 pm

40 to 50 % of crashes moved to shoulder in 10 mins or less

Road Aerial | <<

Tuesday, August 9, 2016 8:06:58 AM
Traffic Map Updated at: 8:05:28 AM



Toggle Full Screen

Zoom Back

Incident List



Legend

- < 20 mph
- 20 - 30 mph
- 30 - 40 mph
- 40 - 50 mph
- 50 - 60 mph
- 60 - 70 mph
- > 70 mph

Add New Incident

Time Stamp: 8/9/2016 8:05 AM Incident Type:

Corridor: I-15 NB Location: Spring Mountain Roadway ID: 89 Segment ID: 1

Which Lanes Blocked: Number of Lanes: Estimated Duration (Minutes): 60

Message: 8/9/2016 8:05 AM, on I-15 Northbound at Spring Mountain, Use other routes Expect delays

Memo:

Tow Truck Arrived: Lane Cleared: Shoulder Available

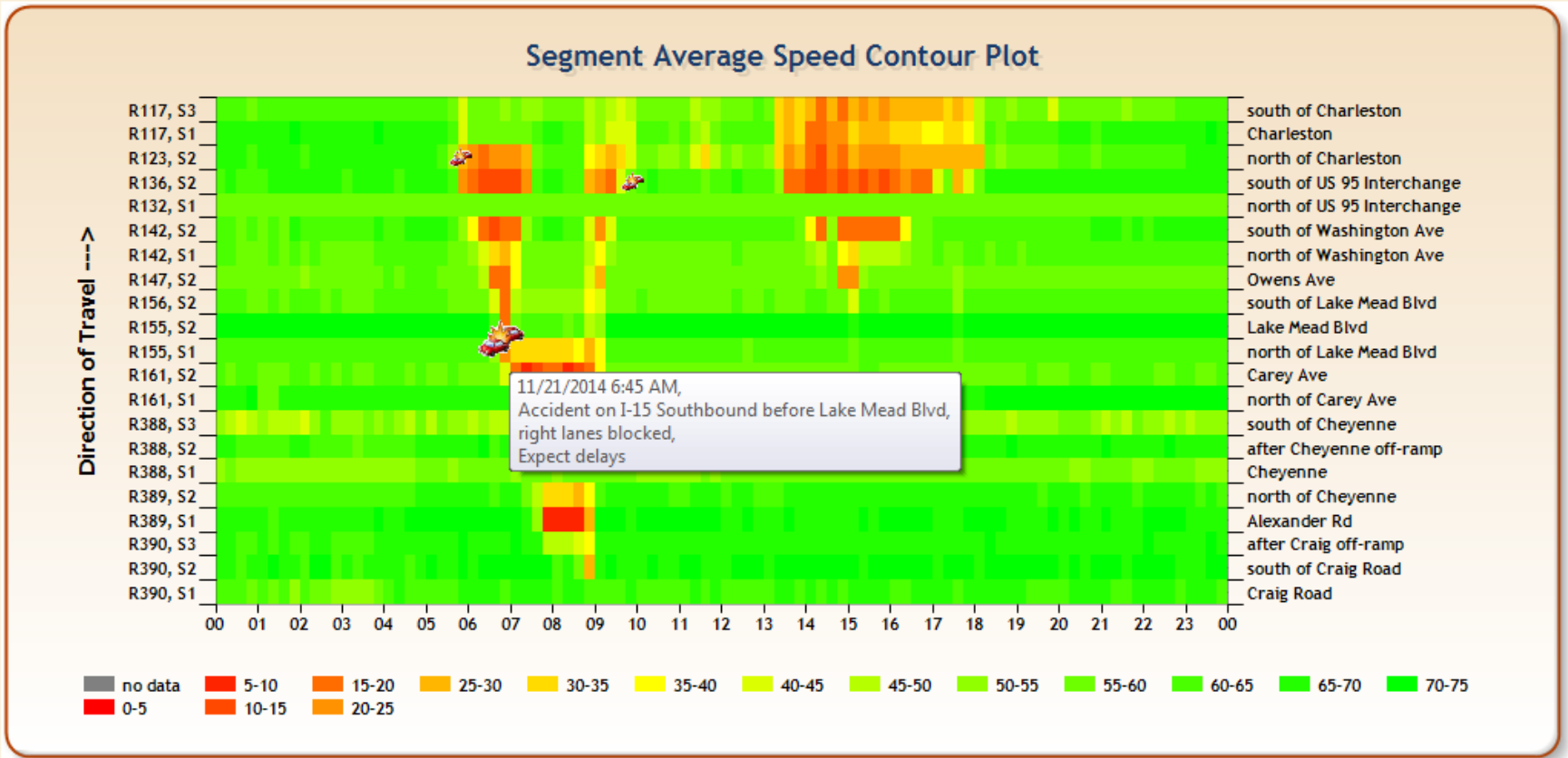
Severity: Truck Involved Secondary

Quick Clearance Veh Moved by Itself Injury/Ambulance

Alert All GovDelivery Add Close

Last example: Since Fall 2012, we have archived snapshots of the crash scene and related traffic delays. These can be used to verify secondary crashes. This slide shows the plot and the next two slides show the snapshot images.

Home About Incident Freeway Ramp ITS Device Other Areas Report Contact Us Test
 Route: I-15 SB From: Craig Road To: south of Charleston
 From: 11/21/2014 To: 11/21/2014 Measure: Average Speed Segment List Show Incident
 Draw Plot View Table Export to Excel Export to Text << < > >>



Camera 102 shows image of initial crash

Home About Incident Freeway Ramp ITS Device Other Areas Report Contact Us Test

Corridors: I-15 Resort Corridor Date: 11/21/2014 Start Time: 5:00 aM End Time: 3:00 PM ENTER

6:15:00 AM

The image displays a web interface for traffic monitoring. At the top, there is a navigation menu with options: Home, About, Incident, Freeway, Ramp, ITS Device, Other Areas, Report, Contact Us, and Test. Below the menu, a search bar shows 'Corridors: I-15 Resort Corridor' and a date filter for '11/21/2014'. Time filters are set to 'Start Time: 5:00 aM' and 'End Time: 3:00 PM'. A '6:15:00 AM' timestamp is visible. The main area contains six camera feeds arranged in a 2x3 grid. Each feed shows a different view of I-15. Camera 102 (top right) shows a multi-lane highway with a crash scene involving several vehicles, including a white van and a car with flashing blue lights. Other cameras (100, 101, 103, 104, 105) show various sections of the highway with traffic. The feeds are labeled with their respective camera numbers and locations: 100 I-15/I-515 NORTH, 101 I-15/US-95 SOUTH, 102 I-15/BONNEVILLE SOUTH, 103 I-15/CHARLESTON NORTH, 104 I-15/SAHARA WEST, and 105 I-15/SAHARA S. Each feed has a caption below it: 'CCTV100 6:15 AM', 'CCTV101 6:15 AM', 'CCTV102 6:15 AM', 'CCTV103 6:15 AM', 'CCTV104 6:15 AM', and 'CCTV105 6:15 AM'. A small '12' is visible in the bottom right corner of the 105 feed.

100 I-15/I-515 NORTH
CCTV100 6:15 AM

101 I-15/US-95 SOUTH
CCTV101 6:15 AM

102 I-15/BONNEVILLE SOUTH
CCTV102 6:15 AM

103 I-15/CHARLESTON NORTH
CCTV103 6:15 AM

104 I-15/SAHARA WEST
CCTV104 6:15 AM

105 I-15/SAHARA S
CCTV105 6:15 AM

Camera 304 shows secondary crash

Home About Incident Freeway Ramp ITS Device Other Areas Report Contact Us

Corridors: I-15 North (Spaghetti Bowl to Speedway) Date: 11/21/2014 Start Time: 5:00 aM End Time: 3:00 PM ENTER

7:00:00 AM



CCTV300 7:00 AM



CCTV301 7:00 AM



CCTV302 7



CCTV303 7:00 AM



CCTV304 7:00 AM



CCTV305 7

Secondary Crashes
Las Vegas Freeways
Nov 2009 through December 2015

		2009		2010					2011					2012						
		Nov-Dec	Jan-Feb	Mar-Apr	May-Jun	Jul-Aug	Sep-Oct	Nov-Dec	Jan-Feb	Mar-Apr	May-Jun	Jul-Aug	Sep-Oct	Nov-Dec	Jan-Feb	Mar-Apr	May-Jun	Jul-Aug	Sep-Oct	Nov-Dec
I-15 NB	Primm to I-215																			
	I-215 to Spring Mtn						2	1	4	3		2	3	1	2	4	3	1	2	
	Spring Mtn to Charleston	3	3	5	3	3	4	7	10	9	11	14	13	16	13	19	14	13	12	10
	Charleston to Speedway	1				1		1			1	1	1			1	1	2	1	
I-15 SB	Speedway to Washington						1			1										1
	Washington to Sahara	2		2	1	1		1	1	3	3	3	3	4	1	1	3	3	1	1
	Sahara to I-215	1	1		1	1	2		1	1	3	1	3	4	1	1				
215 EB	Durango to Eastern																			1
	Eastern to I-515															1		1		
215 WB	I-515 to Warm Springs														1			1	1	
	Warm Springs to Durango														1					
US 95 NB	Horizon to Tropicana															1				1
	Tropicana to Eastern																			
	Eastern to Rancho																			
	Rancho to Rainbow Curve							1	1		1	1		1						1
US 95 SB	Rainbow Curve to Ann			1				1			1			1	1			1		
	Ann to Rainbow Curve								1	2	3			2						
	Rainbow Curve to LV Blvd						2	1			3			1	2	1	1	1	3	1
	LV Blvd to Boulder Hwy											1		1		1	1			
	Boulder Hwy to Russell																			
	Russell to College																	1	1	
		7	4	8	5	6	11	11	14	18	25	27	21	29	25	28	25	25	23	17

		2013					2014					2015								
		Jan-Feb	Mar-Apr	May-Jun	Jul-Aug	Sep-Oct	Nov-Dec	Jan-Feb	Mar-Apr	May-Jun	Jul-Aug	Sep-Oct	Nov-Dec	Jan-Feb	Mar-Apr	May-Jun	Jul-Aug	Sep-Oct	Nov-Dec	
I-15 NB	Primm to I-215															1				
	I-215 to Spring Mtn		1		1		3	1	1		1		1	2	2	1				
	Spring Mtn to Charleston	8	5	12	11	8	5	7	7	12	3	3	5	7	4	3	3	3	2	
	Charleston to Speedway			1	2			1		1										1
I-15 SB	Speedway to Washington							1	1	1	1	1								
	Washington to Sahara	1	2	2		2		2		3	1	4	1	2	3	1	3		2	
	Sahara to I-215						1					2		1	1					
215 EB	Durango to Eastern		1	2	3	2				1	1	1		2						
	Eastern to I-515						1	1						1						
215 WB	I-515 to Warm Springs	1								1		1		1	1		1			
	Warm Springs to Durango														2					
US 95 NB	Horizon to Tropicana								1											1
	Tropicana to Eastern	1			1	1	1	1					1	1		2	1		1	
	Eastern to Rancho																			
	Rancho to Rainbow Curve	1						1		1			1	1						
US 95 SB	Rainbow Curve to Ann																			
	Ann to Rainbow Curve	1					1		2					2	2		1			
	Rainbow Curve to LV Blvd			2	3	1	2		2	1	2	2	3	1	2	1			1	
	LV Blvd to Boulder Hwy	1			1				1		1	1								
	Boulder Hwy to Russell			1							1									
	Russell to College														1			1		
		14	11	21	20	16	12	16	13	21	11	15	12	21	18	9	9	6	6	

2009	2010						2011						2012					
Nov-Dec	Jan-Feb	Mar-Apr	May-Jun	Jul-Aug	Sep-Oct	Nov-Dec	Jan-Feb	Mar-Apr	May-Jun	Jul-Aug	Sep-Oct	Nov-Dec	Jan-Feb	Mar-Apr	May-Jun	Jul-Aug	Sep-Oct	Nov-Dec
7	4	8	5	6	11	11	14	18	25	27	21	29	25	28	25	25	23	17
	2013						2014						2015					
	Jan-Feb	Mar-Apr	May-Jun	Jul-Aug	Sep-Oct	Nov-Dec	Jan-Feb	Mar-Apr	May-Jun	Jul-Aug	Sep-Oct	Nov-Dec	Jan-Feb	Mar-Apr	May-Jun	Jul-Aug	Sep-Oct	Nov-Dec
	14	11	21	20	16	12	16	13	21	11	15	12	21	18	9	9	6	6

***Secondary crashes reduced from 143
in 2012 to 69 in 2015!***

The End!



400 I-515/I-15
NORTH

