

Priority Unfunded Bicycle and Pedestrian Projects Recommended for Inclusion in the FY2012-2017 TIP

Michael Farrell
DTP

Briefing to the Transportation Planning Board
December 15, 2010

Background

- As directed in the TPB's Unified Planning Work Program, the Bicycle and Pedestrian Subcommittee annually develops a list of top priority unfunded bicycle and pedestrian projects.
- At its November 23 meeting the Subcommittee adopted the most recent list
 - Previous lists: December 2009
 - Lists have been developed since 1995
- The list is a statement of priorities among the *unfunded or partially funded* bicycle and pedestrian projects from local, state, agency, and regional plans

Policy Context

- The TPB Vision (1998):
 - Walking and Bicycling
 - Access
 - Safety
 - Mode share
 - Walkable activity centers
 - Included in all new projects
- Bicycle and Pedestrian Plan for the National Capital Region (2010)
 - 336 planned projects
- Region Forward 2050
 - Increase walk/bike trips
 - Build bike/ped projects in the regional plan faster

Bicycle and Pedestrian Plan for the National Capital Region



October 2010

National Capital Region Transportation Planning Board

Selection Criteria Used for the Priority List

- Still Seeking Funding
- Pedestrian Safety
- Bicycle Network Connectivity
- Access to Transit
- Time Frame
- Local Support
 - Included in Local, State, Agency, and Regional Plans
- Reasonable Cost



Priority Unfunded Bicycle/Pedestrian Projects Recommended by the Bicycle and Pedestrian Subcommittee for inclusion in the FY2012-17 TIP*

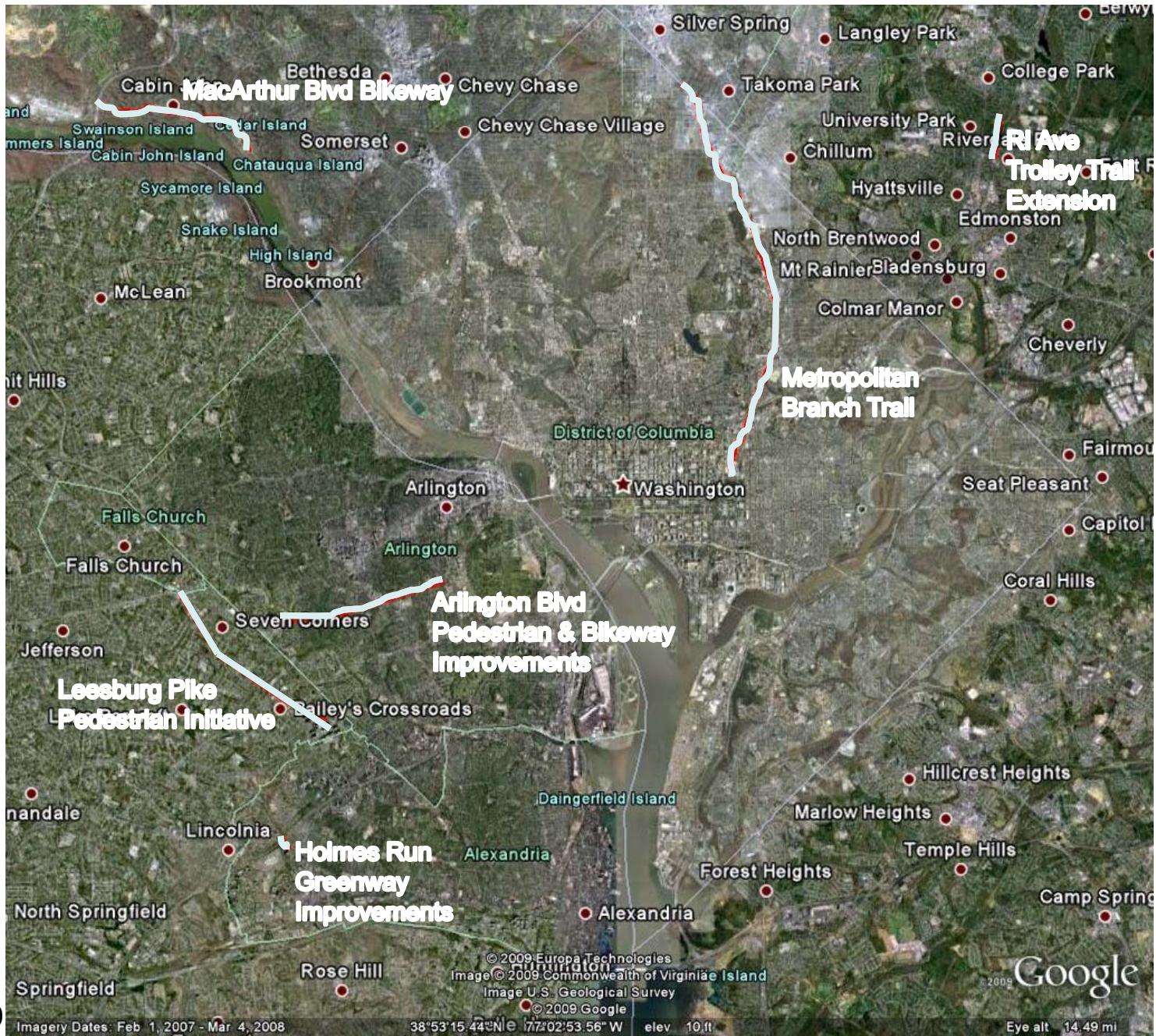
| <i>State</i> | <i>Jurisdiction</i> | <i>Project Name</i> | <i>Estimated Total Cost</i> |
|--------------|------------------------|---|-----------------------------|
| DC | District of Columbia | Metropolitan Branch Trail (Fort Totten section) | \$20,000 |
| MD | Frederick County | Monocacy River Greenway Trail Phase I | \$6,600 |
| | Montgomery County | MacArthur Boulevard Bikeway Improvements Segment 3 Design | \$1,700 |
| | Prince George's County | Rhode Island Avenue Trolley Trail Extension | \$2,000 |
| VA | Alexandria | Holmes Run Greenway Shared-Use Path Improvements | \$5,000 |
| | Arlington | Arlington Boulevard Pedestrian & Bikeway Improvements | \$5,000 |
| | Fairfax County | Leesburg Pike Seven Corners to Alexandria Pedestrian Initiative | \$5,000 |
| | Town of Herndon | Folly Lick/Spring Branch Regional Trail to Dulles Metrorail | \$5,000 |
| | Loudoun County | Loudoun County Parkway Shared-Use Path | \$5,000 |
| | Prince William County | Rt. 1 Sidewalks/Crosswalks-Phase 1 (Annapolis Way-Occoquan Rd) | \$5,000 |
| ALL | Washington Region | Regional Bike Sharing Expansion | \$15,542 |

Total Cost \$69,402

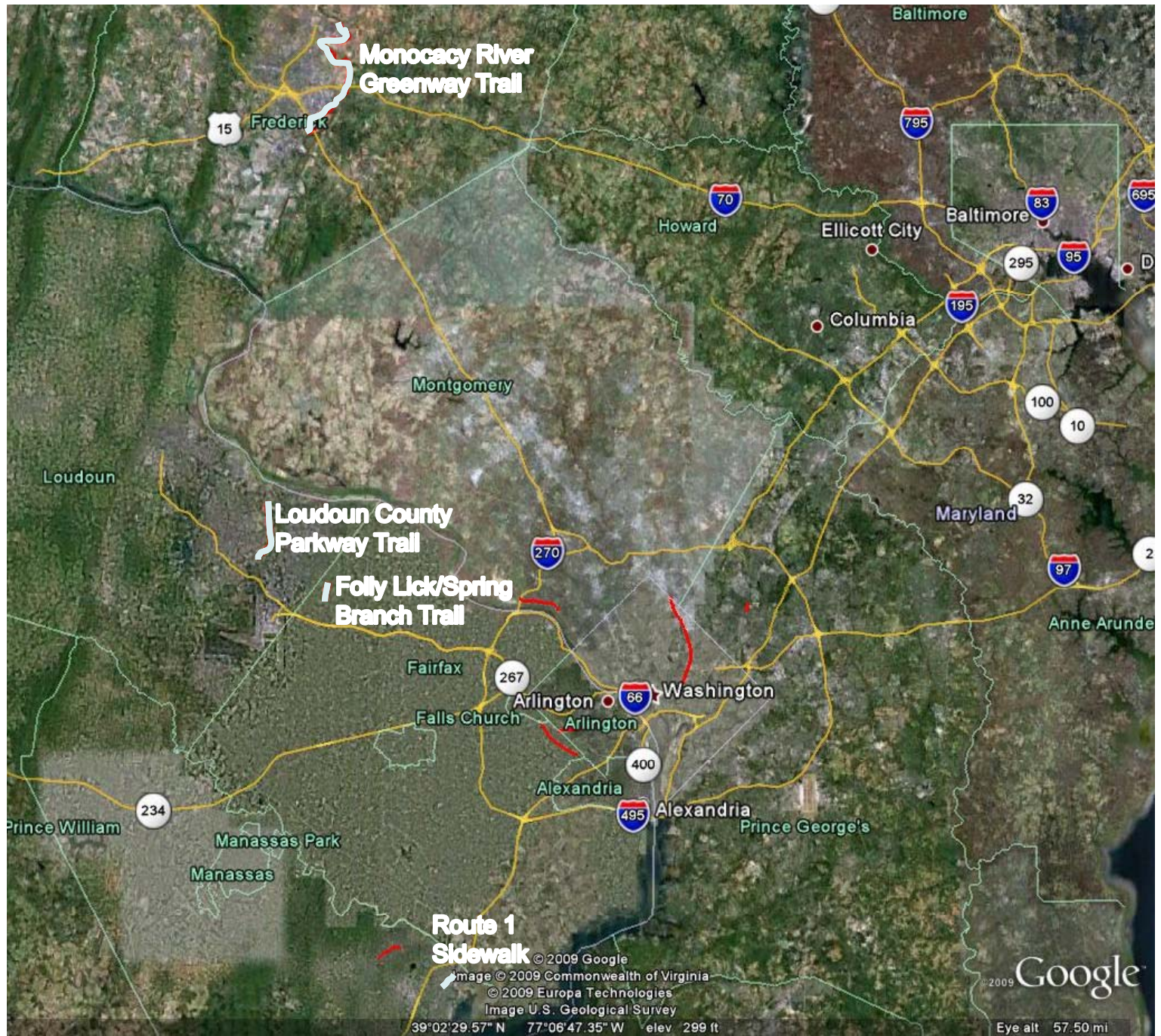
| | |
|----------------|----------|
| D.C. Total | \$20,000 |
| Maryland Total | \$3,700 |
| Virginia Total | \$33,700 |
| Regional | \$15,542 |

Changes Since December 2009

- Three projects on the 2009 list were fully funded
 - MacArthur Blvd. Bikeway Segment 2 (Montgomery County)
 - WMATA Bike Parking (region-wide)
 - Old Bridge Road Sidewalk (Prince William County)
- Two new projects have been added to the list:
 - Route 1 Sidewalks and Crosswalks Phase I (Prince William County)
 - Regional Bike Sharing Expansion (Region-wide)



12/15/2010



12/15/2010

Examples

DC: Metropolitan Branch Trail



- Eight miles from Union Station to Silver Spring
- Union Station to Franklin St. in Brookland is complete
- Next will be Ft. Totten section



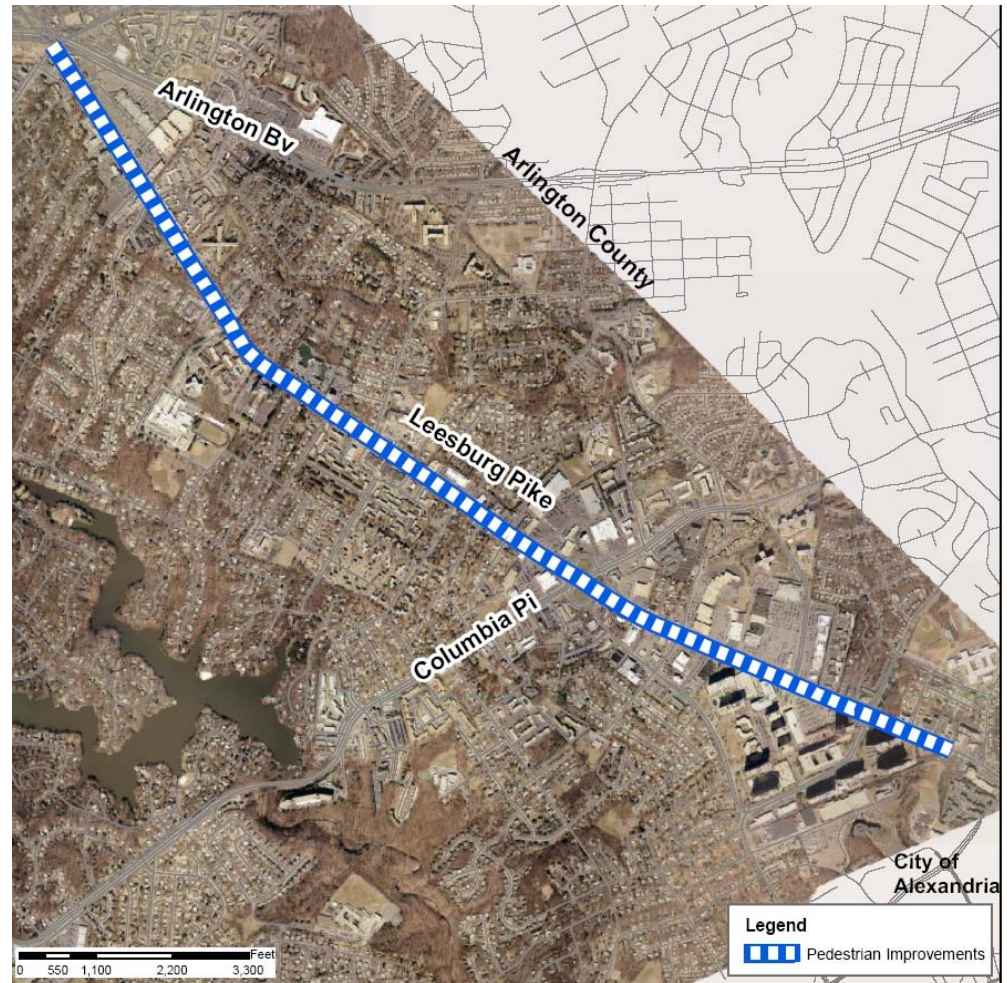
MD: Rhode Island Avenue Trolley Trail Extension

- Extend existing trail from College Park to Riverdale Park Town Center
- Connects a campus community, rail transit
- An important connection
 - Will be lit at night
 - Safer alternative to Route 1



VA: Leesburg Pike Pedestrian Initiative

- Seven Corners to Alexandria
 - High Pedestrian Crash Corridor
 - 67 injuries, 5 deaths over five years
- Sidewalk along both sides of Route 7 from Falls Church to Alexandria
- Intersection pedestrian improvements
- Bus stop improvements
- Partially funded (\$4 million) in the 2007 Transportation Bond
 - First segments will go to construction in 2011



Capital Bikeshare



12/15/2010

Photo: DDOT

- Launched September 2010 with 1100 bicycles in Arlington and DC
- Proposed Expansion:
 - 2,578 bikes at 331 stations
 - TIGER II Federal Grant Application (not funded)
 - District of Columbia, Arlington, Alexandria, Fairfax County, Montgomery County, and the City of College Park
 - Other funding needed
 - Public & private partners

Summary

- The Bicycle and Pedestrian Subcommittee has identified the top priority unfunded bicycle and pedestrian projects, from a regional perspective
- **Benefits**
 - Network connectivity
 - Access to Transit
 - Pedestrian Safety
 - Modest cost
- This priority list is proposed for consideration by member agencies for inclusion in the current or in future TIPs.

Priority Unfunded Bicycle/Pedestrian Projects Recommended by the Bicycle and Pedestrian Subcommittee for inclusion in the FY2012-17 TIP*

| State | Jurisdiction | Lead Agency | Project Name | Estimated Total Cost**** |
|-------|------------------------|---|---|--------------------------|
| DC | District of Columbia | DDOT | Metropolitan Branch Trail (Fort Totten section) | \$20,000 |
| MD | Frederick County | Frederick County Division of Parks & Recreation | Monocacy River Greenway Trail Phase I | \$6,600 |
| | Montgomery County | Montgomery County DOT | MacArthur Boulevard Bikeway Improvements Segment 3 Design | \$1,700 |
| | Prince George's County | M-NCPPC Prince George's County | Rhode Island Avenue Trolley Trail Extension | \$2,000 |
| VA | Alexandria | City of Alexandria | Holmes Run Greenway Shared-Use Path Improvements | \$5,000 |
| | Arlington | Arlington County | Arlington Boulevard Pedestrian & Bikeway Improvements | \$5,000 |
| | Fairfax County | Fairfax County DOT | Leesburg Pike Seven Corners to Alexandria Pedestrian Initiative | \$5,000 |
| | Town of Herndon | Town of Herndon | Folly Lick/Spring Branch Regional Trail to Dulles Metrorail | \$5,000 |
| | Loudoun County | Loudoun County Office of Transportation | Loudoun County Parkway Shared-Use Path | \$5,000 |
| | Prince William County | Prince William County/VDOT | Rt.1 Sidewalks/Crosswalks-Phase 1 (Ann. Way-Occoquan Rd) | \$5,000 |
| ALL | Washington Region | MWCOG | Regional Bike Sharing Expansion | \$15,542 |

Total Cost \$69,402

| | |
|----------------|----------|
| D.C. Total | \$20,000 |
| Maryland Total | \$3,700 |
| Virginia Total | \$33,700 |
| Regional | \$15,542 |

*All projects are included in approved local plans and/or supported by the local government. Although some have been funded for study, none have received a full funding commitment.

"Funding requested" reflects funds that will be needed during the coming fiscal year. "N" is not funded, "P" is partially funded.

**Known funding allocated in recent years. May not include previous funding for related but separate project on the same facility.

***May not include future costs for related but separate projects on the same facility.

****Costs are in FY 2010 dollars. Inflation may increase nominal total cost.

Priority Unfunded Bicycle/Pedestrian Projects Recommended by the Bicycle and Pedestrian Subcommittee for inclusion in the FY2012-17 TIP*
Budget and Selection Factors

| State | Jurisdiction | Project Name | FY 2012 Funding Requested (\$ thousands) | Transit Access | Bicycle Network Connectivity | Pedestrian Safety | On last year's list? | Funding Status | Funding Allocated before 10/09 | Funding Allocated since 10/09 | Funding Needed After FY2012** | Estimated Total Cost**** |
|-------|------------------------|---|--|----------------|------------------------------|-------------------|----------------------|----------------|--------------------------------|-------------------------------|-------------------------------|--------------------------|
| DC | District of Columbia | Metropolitan Branch Trail (Fort Totten section) | \$3,000 | Y | Y | Y | Y | P | \$4,000 | \$0 | \$13,000 | \$20,000 |
| MD | Frederick County | Monocacy River Greenway Trail Phase I | 0 | Y | Y | Y | Y | P | 0 | 0 | 6,600 | \$6,600 |
| | Montgomery County | MacArthur Boulevard Bikeway Improvements Segment 3 Design | 155 | | Y | | N | P | 0 | 345 | 1,200 | \$1,700 |
| | Prince George's County | Rhode Island Avenue Trolley Trail Extension | 550 | Y | Y | Y | Y | P | 0 | 650 | 800 | \$2,000 |
| VA | Alexandria | Holmes Run Greenway Shared-Use Path Improvements | 0 | | Y | Y | Y | P | 0 | 1,700 | 3,300 | \$5,000 |
| | Arlington | Arlington Boulevard Pedestrian & Bikeway Improvements | 2,000 | Y | Y | Y | Y | P | 60 | 0 | 1,940 | \$4,000 |
| | Fairfax County | Leesburg Pike Seven Corners to Alexandria Pedestrian Initiative | 5,000 | Y | Y | Y | Y | P | 4,000 | 0 | 0 | \$9,000 |
| | Town of Herndon | Folly Lick/Spring Branch Regional Trail to Dulles Metrorail | 835 | Y | Y | Y | Y | N | 0 | 0 | 795 | \$1,630 |
| | Loudoun County | Loudoun County Parkway Shared-Use Path | 400 | Y | Y | | Y | N | 0 | 0 | 1,530 | \$1,930 |
| | Prince William County | Rt.1 Sidewalks/Crosswalks-Phase 1 (Ann. Way-Occoquan Rd) | 1,000 | Y | Y | Y | N | N | 0 | 0 | 1,000 | \$2,000 |
| ALL | Washington Region | Regional Bike Sharing Expansion | 14,442 | Y | | N | N | P | 0 | 0 | 1,100 | \$15,542 |

Total Cost \$27,382 \$8,060 \$2,695 \$31,265 \$69,402

| | | | | | | |
|----------------|----------|--|---------|---------|----------|----------|
| D.C. Total | \$3,000 | | \$4,000 | \$0 | \$13,000 | \$20,000 |
| Maryland Total | \$705 | | \$0 | \$995 | \$8,600 | \$10,300 |
| Virginia Total | \$9,235 | | \$4,060 | \$1,700 | \$8,565 | \$23,560 |
| Regional | \$14,442 | | \$0 | \$0 | \$1,100 | \$15,542 |

*All projects are included in approved local plans and/or supported by the local government. Although some have been funded for study, none have received a full funding commitment.

**Funding requested" reflects funds that will be needed during the coming fiscal year. "N" is not funded, "P" is partially funded.

***Known funding allocated in recent years. May not include previous funding for related but separate project on the same facility.

****May not include future costs for related but separate projects on the same facility.

*****Costs are in FY 2010 dollars. Inflation may increase nominal total cost.

| Projects from the December 2009 Priority List that Subsequently Received Full Funding | | | Total Cost | Transit Access | Bicycle Network Connectivity | Pedestrian Safety |
|---|-----------------------|--|------------|----------------|------------------------------|-------------------|
| MD | Montgomery County | Macarthur Boulevard Bikeway Improvements Segment 2 | \$9,530 | Y | Y | fully funded |
| VA | Prince William County | Old Bridge Road Sidewalk | \$5,000 | Y | Y | fully funded |
| ALL | WMATA area | WMATA Bicycle Parking Project | \$1,165 | Y | Y | fully funded |