
How Safe Are Our Roads?



Annual Data Report on the Impact of Drunk Driving on
Road Safety in the Washington D.C. Metropolitan Region
December 2011



Metropolitan Washington
Council of Governments



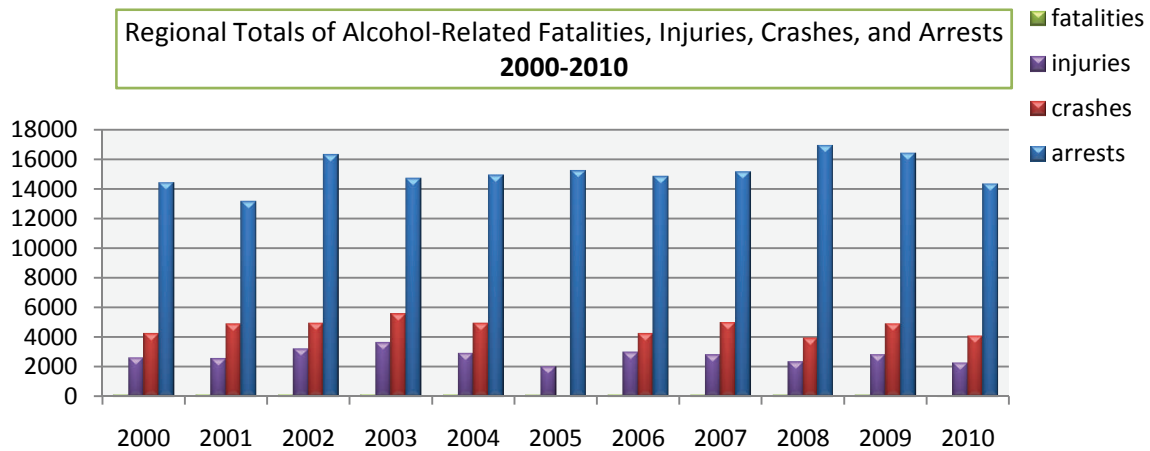
WRAP



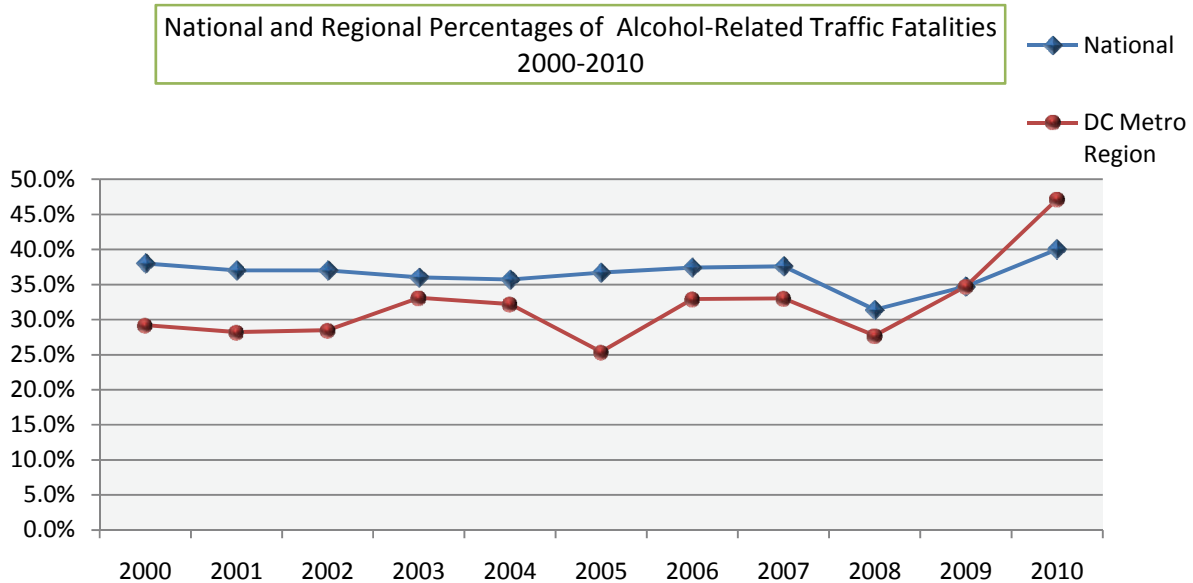
2011 How Safe Are Our Roads?

A Look at Regional and National Figures

Regional Totals of Alcohol-Related Fatalities, Injuries, Crashes, and Arrests
2000-2010



National and Regional Percentages of Alcohol-Related Traffic Fatalities
2000-2010



The Metropolitan Washington Region has experienced a decrease in the overall number of alcohol-related arrests, injuries, and crashes from 2009 to 2010.

The region has seen an increase in the number of alcohol-related fatalities (26.37%) in the region from 2009 to 2010, whereas nationally, there was a decrease of 5.75%. For alcohol impaired driving (BAC = 0.08+), the regional percentage of fatalities is below the national level (26.09% for the region versus 31.1% for the nation).

*Source, National Highway Traffic Safety Administration



WRAP



2011 How Safe Are Our Roads?

How Safe Are Our Roads? 2010 Overview

Findings in the 2011 report include:

FATALITIES: Local alcohol and/or drug-related traffic deaths **increased** between 2009 and 2010 by 26.37%, (91 to 115 respectively). Such negates a previous, three year consecutive decline in such deaths occurring in the Greater Washington area.

INJURIES: Local alcohol and/or drug-related traffic injuries **decreased** by 16.50% between 2009 and 2010 (from 2,843 to 2,373 such injuries).

CRASHES: Area traffic crashes attributed to alcohol and/or drugs **decreased** by 4.7% between 2009 and 2010 (from 4,921 to 4,689 such crashes).

ARRESTS: Local arrests for either driving under the influence (DUI) or driving while intoxicated (DWI) **decreased** by 11.16% between 2009 and 2010 (from 16,419 to 14,594 such arrests). Such represents the second consecutive year decrease in such arrests being made in the Greater Washington area.

BAC = .01+ vs. BAC = .08+ : Of the Washington Metropolitan area's 253 total traffic fatalities for 2010, 21.3% of these roadway deaths were alcohol and/or drug-related (BAC= 0.01+); 2010 national statistics (NHTSA) show that 40.6% of total US vehicular fatalities in 2010 were reported as alcohol/drug related (BAC = .01+).

Using NHTSA's current BAC = .08+ standards (which will be reflected in future reports), of the Washington metropolitan areas' 253 total traffic fatalities last year, over one quarter (26.1%) of these roadway deaths were attributed to alcohol impaired driving (BAC = .08+), comparatively, the total US vehicular fatalities in 2010 reported as alcohol impaired driving (BAC = .08+) was 31.1%; therefore the Washington metropolitan area falls below the national average for fatalities.

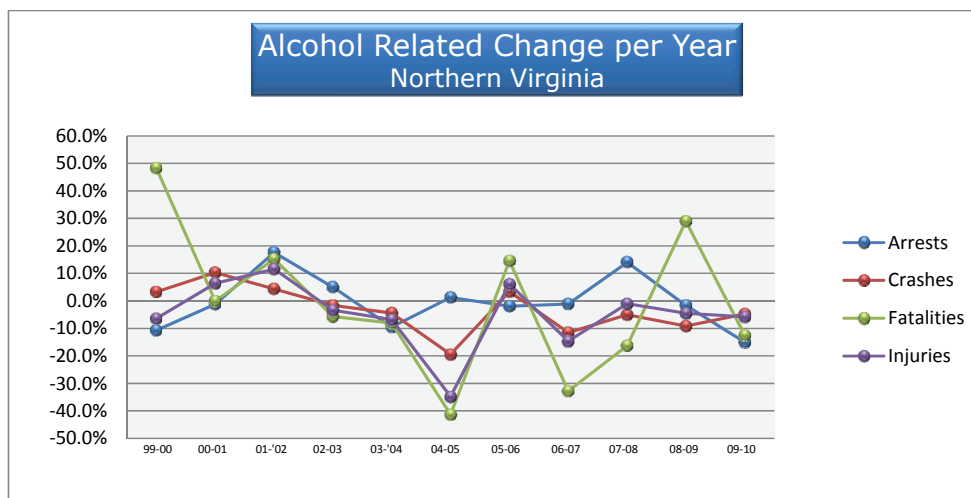
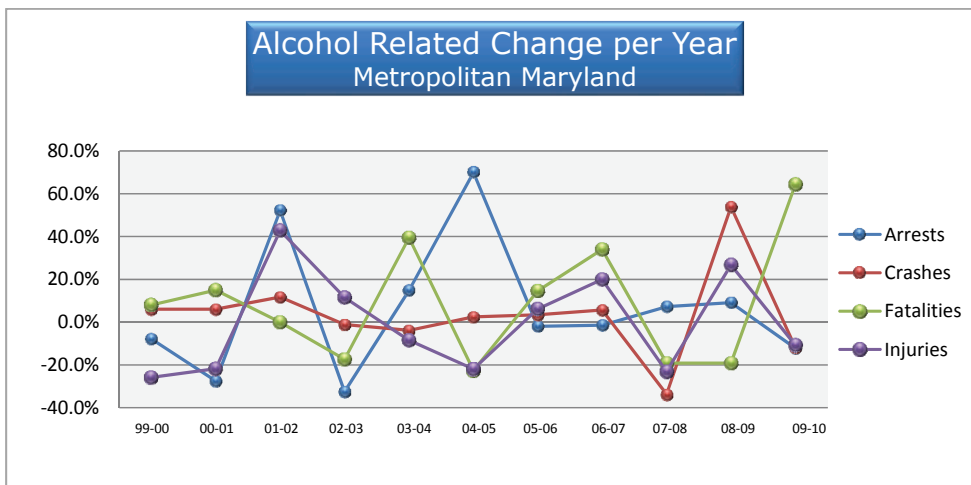
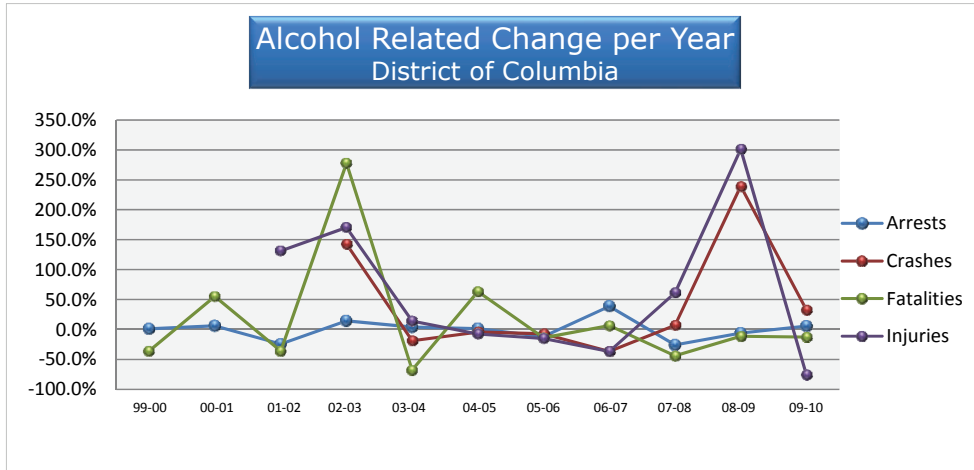
Background

Data compiled in this report comes from national, state, and local sources including the U.S. Census Bureau, National Highway Traffic Safety Administration (NHTSA), and Virginia and Maryland Departments of Transportation. Primary data was collected from the local police departments of each jurisdiction.

It should be noted that the jurisdictional data in this report does not always include State Police data. The State Police in Maryland and Virginia are charged with enforcing traffic laws on state highways and interstate expressways; inclusion of this data would likely increase the number of incidents in all categories. It is possible that some jurisdictional data may include State Police figures because local police often respond to highway incidents when State Police are unavailable. In some jurisdictions, the data reported were provided by the state, and most likely include state police data.



Sub Regional Trends



* Data provided by MPD, US Park Police, VDMV, MD SHA, MD NSC, and NHTSA

Total Traffic Fatalities

Total Traffic Fatalities by Jurisdiction 2000-2010								
	2000	2006	2007	2008	2009	2010	Percent Change	
							2009-2010	2000-2010
DISTRICT OF COLUMBIA	50	41	54	40	33	25	-24.24%	-50.00%
MARYLAND								
Montgomery County	58	57	46	52	40	47	17.50%	-18.97%
Prince George's County	91	111	126	129	98	92	-6.12%	1.10%
MD Regional total	149	168	175	181	138	139	0.72%	-6.71%
VIRGINIA								
Arlington County	14	4	6	8	5	5	0.00%	-64.29%
Fairfax County	70	67	48	29	37	35	-5.41%	-50.00%
Loudoun County	9	19	22	11	13	12	-7.69%	33.33%
Prince William County	27	46	27	24	16	23	43.75%	-14.81%
City of Alexandria	5	1	5	3	1	3	200.00%	-40.00%
City of Fairfax	0	3	2	0	2	0	-100.00%	0.00%
City of Falls Church	0	0	0	0	1	2	100.00%	200.00%
City of Manassas	1	1	3	1	3	0	-100.00%	-100.00%
City of Manassas Park	0	0	0	0	0	0	0.00%	0.00%
Northern Virginia Total	126	141	113	76	78	80	2.56%	-36.51%
DC Metro Region Total	325	350	342	297	249	244	-2.01%	-24.92%
National Parks in Region	n/a	13	9	10	16	10	-37.50%	n/a
Regional Total Adjusted	325	363	351	307	265	254	-4.15%	-21.85%
National	41945	42708	41259	37423	33883	32885	-3.23%	-21.60%

* Data provided by MPD, US Park Police, VDMV, MD SHA, MD NSC

Alcohol-Related Traffic Fatalities

Alcohol-Related Traffic Fatalities by Jurisdiction 2000-2010*								
	2000	2006	2007	2008	2009	2010	Percent Change	
							2009-2010	2000-2010
DISTRICT OF COLUMBIA	9	15	16	9	8	7	-12.50%	-22.22%
MARYLAND								
Montgomery County	13	17	13	14	11	22	9.1%	69.23%
Prince George's County	27	30	50	38	31	47	51.61%	74.07%
MD Regional total	40	47	63	52	42	69	64.29%	72.5%
VIRGINIA								
Arlington County	9	1	3	3	1	1	0.00%	-88.89%
Fairfax County	23	24	19	13	20	14	-30.00%	-39.13%
Loudoun County	2	5	0	5	6	7	16.67%	250.00%
Prince William County	9	22	12	9	10	11	10.00%	22.22%
City of Alexandria	2	0	1	1	1	1	0.00%	-50.00%
City of Fairfax	0	3	1	0	1	0	-100.00%	0.00%
City of Falls Church	0	0	0	0	0	1	100.00%	100.00%
City of Manassas	1	0	1	0	1	0	-100.00%	-100.00%
City of Manassas Park	0	0	0	0	0	0	0.00%	0.00%
Northern Virginia Total	46	55	37	31	40	35	-12.50%	-23.91%
DC Metro Region Total	95	117	100	92	90	111	23.33%	16.84%
National Parks in Region	n/a	2	0	1	1	4	300.00%	n/a
Regional Total Adjusted	n/a	119	100	93	91	115	26.37%	n/a
National**	n/a	17738	17158	15449	14179	13364	-5.75%	n/a

*Definition: WRAP's Alcohol-related traffic fatalities includes any person who dies as a result of a traffic crash involving alcohol with a BAC level .01 or higher and that is according to NHTSA's definition: based on the BAC of all involved drivers, motorcycle riders (operators), pedal-cyclists, and pedestrians.

**Data provided from Maryland State Police for 2010 is under review by NHTSA and is not imputed data. Maryland data does not include pedestrians or pedalcyclists involved in the fatal crash.

***Data provided by MPD, US Park Police, VDMV, MD SHA, MD NSC, and NHTSA

Fatalities by BAC

Fatalities by the Highest Blood Alcohol Concentration (BAC) in the Crash*							
	Total Fatalities Number	BAC = 0		BAC = 0.01-0.07		BAC = 0.08+ ***	
		Number	Percent	Number	Percent	Number	Percent
DISTRICT OF COLUMBIA	24*	12	50.0%	7	29.2%	5	20.83%
MARYLAND							
Montgomery County	47	25	53.19%	10**	21.28%	12	25.53%
Prince George's County	92	45	48.91%	19**	20.65%	28	30.43%
MD Regional total	139	70	50.36%	29	20.86%	40	28.77%
VIRGINIA							
Arlington County	6	5	83.33%	0	0.00%	1	16.67%
Fairfax County	35	21	60.00%	6	17.14%	8	22.86%
Loudoun County	12	5	41.67%	4	33.33%	3	25.00%
Prince William County	23	12	52.17%	2	8.70%	9	39.13%
City of Alexandria	2	1	50.00%	1	50.00%	0	0.00%
City of Fairfax	0	0	0.00%	0	0.00%	0	0.00%
City of Falls Church	2	1	50.00%	1	50.00%	0	0.00%
City of Manassas	0	0	0.00%	0	0.00%	0	0.00%
City of Manassas Park	0	0	0.00%	0	0.00%	0	0.00%
Northern Virginia Total	80	45	56.25%	14	17.50%	21	26.25%
DC Metro Region Total	243	127	52.26%	50	20.58%	66	27.16%
National Parks in Region	10	6	60.00%	4	40.00%	0	0.00%
Regional Total Adjusted	253*	133	52.57%	54	21.34%	66	26.09%
National	32885	7961	24.21%	13364	40.60%	10228	31.10%

*Data utilized for this table is sourced from NHTSA, not local jurisdictions and is based on NHTSA's Old Definition: "BAC of all involved drivers, motorcycle riders (operators), pedalcyclists, and pedestrians)"

**Data provided from Maryland State Police for 2010 is under review by NHTSA and is not imputed data. Maryland data does not include pedestrians or pedalcyclists involved in the fatal crash.

*** The data on the last column of this table for fatalities includes all involved drivers and motorcycle riders with BAC=.08+ is imputed data as reported by NHTSA on their 2011 Traffic Safety reports by State.



Injuries

Total Traffic Injuries by Jurisdiction 2000-2010								
	2000	2006	2007	2008	2009	2010	Percent Change	
							2009-2010	2000-2010
DISTRICT OF COLUMBIA	n/a	4,265	4,070	4,578	4,676	4,473	-4.34%	n/a
MARYLAND								
Montgomery County	8,271	6,759	6,905	6,624	6,758	4,646	-31.30%	-43.80%
Prince George's County	9,610	5,595	7,771	7,099	6,786	4,188	-38.30%	-56.40%
MD Regional total	17,881	12,354	14,676	13,723	13,544	8,834	-34.80%	-50.60%
VIRGINIA								
Arlington County	1,894	1,374	1,201	1,288	1,227	1,007	-17.90%	-46.80%
Fairfax County	9,405	8,537	8,019	7,964	7,590	7,600	0.10%	-19.20%
Loudoun County	1,419	1,711	631	1,717	1,681	1,764	4.90%	24.30%
Prince William County	3,050	3,341	2,624	2,717	2,614	2,741	4.90%	-10.10%
City of Alexandria	1,309	1,317	1,403	1,492	816	614	-24.80%	-53.10%
City of Fairfax	366	315	241	201	169	178	5.30%	-51.40%
City of Falls Church	152	240	40	141	264	193	-26.90%	27.00%
City of Manassas	345	448	288	270	327	328	0.30%	-4.90%
City of Manassas Park	52	43	18	20	17	26	52.90%	-50.00%
Northern Virginia Total	17,992	17,326	14,465	15,810	14,705	14,451	-1.70%	-19.70%
DC Metro Region Total	35,873	33,945	33,211	34,111	32,925	27,758	-15.69%	-22.62%
National Parks in Region	n/a	736	675	669	731	826	13.00%	n/a
Regional Total Adjusted	35,873	34,681	33,886	34,780	33,656	28,584	-15.07%	-20.32%

* Data provided by MPD, US Park Police, VDMV, MD SHA, MD NSC, and NHTSA



Alcohol-Related Injuries

Alcohol-Related Traffic Injuries in 2010				
	Total Injuries	Alcohol Related Injuries	Percentage of Total Injuries that were Alcohol Related	Percent Change Alcohol Related Injuries 2009-2010
DISTRICT OF COLUMBIA	4473	92	2.06%	-76.10%
MARYLAND				
Montgomery County	4,646	488	10.50%	-1.81%
Prince George's County	4,188	617	14.73%	-16.73%
MD Regional total	8,834	1105	12.51%	-10.74
VIRGINIA				
Arlington County	1,007	78	7.70%	-17.02%
Fairfax County	7,600	610	8.00%	-8.73%
Loudoun County	1,764	140	7.90%	-1.41%
Prince William County	2,741	203	7.40%	-21.92%
City of Alexandria	614	48	7.80%	-26.15%
City of Fairfax	178	6	3.40%	-53.85%
City of Falls Church	193	3	1.60%	-72.73%
City of Manassas	328	25	7.60%	-28.58%
City of Manassas Park	26	1	3.80%	0.00%
Northern Virginia Total	14,451	1,114	7.70%	-5.75%
DC Metro Region Total	27,758	2,311	8.33%	-17.61%
National Parks in Region	826	62	7.51%	63.15%
Regional Total Adjusted	28,584	2,373	8.30%	-16.53%

*Data provided by MPD, US Park Police, VDMV, MD SHA, MD NSC, and NHTSA



Crashes

Total Traffic Crashes By Jurisdiction 2000 - 2010								
	2000	2006	2007	2008	2009	2010	Percent Change	
							2009-2010	2000-2010
DISTRICT OF COLUMBIA	n/a	16,478	15,100	16,147	16,841	17318	2.83%	n/a
MARYLAND								
Montgomery County	13,356	12,076	12,460	11,925	12,311	11536	-6.29%	13.62%
Prince George's County	15,332	15,863	15,060	14,289	13,777	13013	-5.54%	15.13%
MD Regional total	28,688	27,939	27,520	26,214	26,088	24549	-5.9%	-14.43%
VIRGINIA								
Arlington County	3,457	2,984	2,649	2,596	2,205	2,192	-0.60%	-36.60%
Fairfax County	19,082	18,254	17,152	16,318	14,233	13,726	-73.80%	-28.10%
Loudoun County	3,034	4,234	5,720	3,828	3,501	3,798	8.50%	25.20%
Prince William County	5,310	7,132	5,852	5,520	5,148	4,984	-3.20%	-6.10%
City of Alexandria	2,282	2,019	1,947	1,868	1,395	1,594	14.30%	-30.10%
City of Fairfax	840	926	817	616	678	655	-3.40%	-22.00%
City of Falls Church	316	240	243	177	249	190	-23.70%	-39.90%
City of Manassas	787	931	725	622	547	590	7.90%	-25.00%
City of Manassas Park	87	111	73	65	42	40	-4.80%	-54.00%
Northern Virginia Total	35,195	36,831	35,178	31,610	27,998	27,769	-0.80%	-21.10%
DC Metro Region Total	63,883	81,248	77,798	73,971	70,927	69,636	-1.82%	9.01%
National Parks in Region	n/a	2945	2669	2568	2874	2762	-3.90%	n/a
Regional Total Adjusted	63,883	84,193	80,467	76,539	73,801	72,398	-1.90%	13.33%

*Data provided by MPD, US Park Police, VDMV, MD SHA, MD NSC, and NHTSA



Alcohol-Related Crashes

Alcohol-Related Traffic Crashes in 2010				
	Total Crashes	Alcohol Related Crashes	Percentage of Total Crashes that were Alcohol Related	Percent Change Alcohol Related Crashes 2009-2010
DISTRICT OF COLUMBIA	17318	594	3.43%	32.59%
MARYLAND				
Montgomery County	11536	891	7.72%	-15.55%
Prince George's County	13,013	1271	9.76%	-9.08%
MD Regional total	24,549	2162	8.81%	-11.86%
VIRGINIA				
Arlington County	2,192	213	9.70%	6.50%
Fairfax County	13,726	919	6.70%	-3.36%
Loudoun County	3,798	210	5.50%	-0.47%
Prince William County	4,984	319	6.40%	-15.83%
City of Alexandria	1,594	102	6.40%	3.03%
City of Fairfax	655	32	4.90%	-11.11%
City of Falls Church	190	6	3.20%	-45.45%
City of Manassas	590	32	5.40%	-25.58%
City of Manassas Park	40	8	20.00%	300.00%
Northern Virginia Total	27,769	1,841	6.63%	-4.71%
DC Metro Region Total	69,636	4,597	6.60%	-4.88%
National Parks in Region	2762	92	3.33%	4.55%
Regional Total Adjusted	72,398	4,689	6.48%	-4.71%

*Data provided by MPD, US Park Police, VDMV, MD SHA, MD NSC, and NHTSA



Alcohol-Related Arrests

Total-Alcohol Related Traffic Arrests by Jurisdiction 2000-2010								
	2000	2006	2007	2008	2009	2010	Percent Change	
							2009-2010	2000-2010
DISTRICT OF COLUMBIA	1,850	1,600	2,224	1,655	1,555	1648	5.98%	-10.92%
MARYLAND								
Montgomery County	4,436	3,714	3,487	2,689	2,903	2647	-8.82%	-40.33%
Prince George's County	1,933	1,667	1,814	1,832	1,725	1416	-17.91%	-26.75%
MD Regional total	6,369	5,381	5,301	4,521	4,628	4063	-12.21%	-36.21%
VIRGINIA								
Arlington County	817	688	647	833	693	609	-12.10%	-25.50%
Fairfax County	2,475	2,769	2,586	4,362	4,057	3,407	-16.00%	37.70%
Loudoun County	386	616	690	1,175	1,133	939	-17.10%	143.00%
Prince William County	1,517	1,794	1,935	2,811	2,699	2,394	-11.30%	57.80%
City of Alexandria	293	479	567	559	501	348	-30.50%	18.80%
City of Fairfax	208	167	184	182	175	187	6.90%	-10.10%
City of Falls Church	84	54	48	66	90	72	-20.00%	-14.30%
City of Manassas	349	218	160	110	171	145	-15.20%	-58.45%
City of Manassas Park	92	106	178	60	124	93	-25.00%	1.10%
Northern Virginia Total	6,221	6,891	6,995	10,158	9,643	8194	-15.02%	31.72%
DC Metro Region Total	14,440	13,872	14,520	16,334	15,826	13,905	-12.14%	-3.70%
National Parks in Region	n/a	974	634	614	593	689	16.19%	n/a
Regional Total Adjusted	14,440	14,846	15,154	16,948	16,419	14,594	-11.16%	1.06%

*Data provided by MPD, US Park Police, VDMV, MD SHA, MD NSC, and NHTSA



Youth Data

Alcohol Related Fatalities, Crashes, Injuries, and Arrests for Persons Under 21 Years of Age By Region, 2010

	Fatalities	Alcohol-Related Fatalities	Percentage of Alcohol Related (BAC 0.01+)	Crashes	Alcohol Related Crashes	Percentage of Alcohol-related Crashes	Injuries	Alcohol Related Injuries	Percentage of Alcohol-related Injuries	Arrests	Alcohol Related Arrests	Percentage of Alcohol-related Arrests
DISTRICT OF COLUMBIA	2	0	0.00%	3944	8	0.20%	n/a	n/a	n/a	41	14	34.14%
MARYLAND												
Montgomery County	10	2	20.00%	1733	74	4.27%	1060	34	3.20%	7743	119	1.54%
Prince George's County	11	3	27.27%	1633	58	3.55%	936	27	2.88%	11594	56	0.48%
MD Regional Total	21	5	23.81%	3366	132	3.91%	1996	61	3.04%	19337	175	1.01%
VIRGINIA												
Arlington County	0	0	0.00%	230	13	5.70%	93	3	3.20%	1,920	16	0.80%
Fairfax County	8	2	25.00%	2,655	142	5.30%	1,003	85	8.50%	15,653	255	1.60%
Loudoun County	2	1	50.00%	817	41	5.00%	284	28	9.90%	4,462	77	1.70%
Prince William County	7	3	42.90%	1,232	59	4.80%	542	36	6.60%	8,220	198	2.40%
City of Alexandria	0	0	0.00%	199	11	5.50%	66	7	10.60%	979	10	1.02%
City of Fairfax	0	0	0.00%	153	2	1.30%	12	1	8.30%	1,193	9	0.80%
City of Falls Church	0	0	0.00%	41	1	2.40%	0	0	0.00%	386	3	0.80%
City of Manassas	0	0	0.00%	153	4	2.60%	58	1	1.70%	375	6	1.6%
City of Manassas Park	0	0	0.00%	16	2	12.50%	5	1	20.00%	256	2	0.78%
Northern Virginia Total	17	6	35.29%	5496	275	5.00%	2063	162	7.85%	33444	576	1.72%
DC Metro Regional Total	40	11	27.50%	12806	415	3.24%	4059	223	5.49%	52822	765	1.45%
National Parks in Region	0	0	0.00%	172	1	0.58%	32	3	9.37%	69	12	17.39%
Regional Total Adjusted	40	11	27.50%	12978	416	3.21%	4091	226	5.52%	52891	777	1.47%

*Data provided by MPD, US Park Police, VDMV, MD SHA, MD NSC, and NHTSA

Methodology

Following is a listing of the agencies providing local jurisdictional data:

District of Columbia:

Metropolitan Police Department
U.S. Park Police

State of Maryland:

Maryland State Police
Prince George's County Police Department
Montgomery County Department of Police
MD National Study Center
MD Highway Safety Office

Virginia:

State of Virginia: Virginia Department of Motor Vehicles, 2010 Crash Facts
Arlington County Police Department
Fairfax County Police Department
Loudoun County Sheriff's Office
Prince William County Police Department
City of Alexandria Police Department
City of Fairfax Police Department
City of Falls Church Police Department
City of Manassas Police Department
City of Manassas Park Police Department

Definitions of Data-Related Terms

NHTSA Alcohol-Related Traffic Fatalities: any fatality that occurs in motor vehicle traffic crashes that involves at least one driver or a motorcycle rider (operator) with a BAC of .01 grams per deciliter or higher

WRAP Alcohol-Related Traffic Fatalities: Any person who dies as result of a traffic crash involving alcohol with a BAC level .01 or higher

NHTSA Alcohol-Impaired Driving Traffic Fatalities: any fatality that occurs in motor vehicle traffic crash that involves at least one driver or a motorcycle rider (operator) with a BAC of .08 grams per deciliter or higher; This threshold does not consider the impairment status of non-occupants involved in fatal crashes, such as pedestrians or pedal cyclist.

WRAP Alcohol-Impaired Driving Traffic Fatalities: Any person who dies as result of a traffic crash involving alcohol with a BAC level .08 or higher

WRAP Alcohol-Related Traffic Fatalities for Persons Under 21: Any person under the age of 21 year who has died as result of an alcohol-related traffic crash involving a driver with a BAC level .01 or higher. This includes drivers, passengers, bicyclists, and pedestrians.

Alcohol-Related Traffic Injuries: where any driver, passenger, bicyclist or pedestrian is listed on the police report to be injured in an alcohol-related crash where the BAC = .01 or higher

Alcohol-Related Traffic Injuries for Persons Under 21: any person under the age of 21 who receives injuries because of an alcohol-related crash where the BAC = .01 or higher; this includes drivers, passengers, bicyclists, and pedestrians.

Alcohol-Related Traffic Crashes: the driver, passenger, bicyclist, or pedestrian is listed on the police report as drinking before the crash with a BAC = .01 or higher. At least one driver in the crash was reported to be under the influence of alcohol and/or other drugs.

Alcohol-Related Traffic Crashes for Persons Under 21: any person under the age of 21 who was involved in a traffic crash involving a driver with a BAC = .01 or higher. This data includes drivers, passengers, bicyclists, and pedestrians.

Drunk Driving Arrests/Citation: a general reference to those criminal cases that are called DUI, DWI, OUI, OWI or other acronyms that generally describe three types of cases:

-The driver is sufficiently impaired by alcohol, drugs or a combination of the two, and cannot drive safely, and has a BAC level of .01 or higher;

-The driver is a "Drunk Driver", as defined by the driver being above that state's legal limit of BAC .08;

-A driver under the age of 21 is under the influence of alcohol at a BAC level of .02 or higher

DWI/DUI Arrests: a driver is listed on the police report as arrested for operating a motor vehicle under the influence of alcohol with a BAC level of .01 or higher

DWI/DUI Arrests for persons under 21: any person/driver under the age of 21 listed on the police report as arrested for operating a motor vehicle under the influence of alcohol with a BAC level of .01 or higher

DWI/DUI Arrests for persons under 18: any person/driver under the age of 18 listed on the police report as arrested for operating a motor vehicle under the influence of alcohol with a BAC level of .01 or higher

Data Analysis

The findings in this report are based on data collected from organizations

and agencies from across the Washington Metro region. Data tables provide totals within the Washington Metro region as well as individual jurisdictions. Analysis focuses on changes in motor vehicle fatalities, injuries, crashes, and arrests. Results are reported as numbers and percentage of alcohol-related incidents to total numbers across time.

Data Limitations

It is important to note limitations that affected collection and analysis of this data, as they may limit comparability across jurisdictions and influence the level of reasonable analysis. Whenever possible, limitations are noted within the tables and figures. It is important that the reader keep the following in mind:

It should be noted that Montgomery County, Maryland has recently changed and enhanced their database system. While these changes allow them to capture data more accurately, comparisons to previous year's data should be made with caution. In addition, because this report tracks just two jurisdictions in Maryland, regional totals could also be affected.

There is no standardization for data definitions, collection, or recording within the Washington Metro region. Each agency has its own system of data collection, coding, and management. In addition, the range and type of data collected may not be consistent across jurisdictions. The data reported and analyzed in this report reflect data as reported by contact agencies. Independent verification of data to ensure accuracy is not within the scope of this report.

Information on data collection and management systems and changes within jurisdictions was not solicited. In addition, changes in laws or judicial priorities may result in increased attention to specific data (e.g. blood alcohol level in driver fatalities related to stricter server laws). In some cases, this may result in missing data or data that appears inconsistent when examined against the same values for previous years. It is beyond the scope of this report to identify data methodology or priority changes for each jurisdiction.

Data on impaired driver involvement in motor vehicle fatalities, injuries, crashes and arrests was requested for alcohol-impairment only. Therefore, data are assumed to reflect only alcohol impairment and are reported in this way, although some cases may involve drug use.

The number of incidents, total and related to alcohol impairment, is very small for some jurisdictions. Due to the small numbers, jurisdictional analysis might easily misrepresent the problem. For example, an increase of one alcohol-related fatality would have little impact in a jurisdiction that saw 50 alcohol-related fatalities the previous year, but would appear to represent a significant change in a small jurisdiction with only one or two alcohol-related fatalities the previous year.

Data are reported and analyzed by absolute numbers only. At this time, information that would allow identification of comparable rates is unavailable. It is assumed that people involved in motor vehicle crashes and arrests may live within or outside the Washington Metro region. Collection of data on driver or passenger residence versus jurisdiction of accident is beyond the scope of this report. Calculating rates based on the Washington Metro region's population or number of licensed drivers would not accurately represent the problem since drivers may be from outside the jurisdiction.

Data on people under the age of 21 years is collected in an inconsistent manner among jurisdictions. Caution must be used in evaluation of this data due to varied definitions and missing data.

Many charts display two regional total numbers. The first, "DC Regional Total" is the total of the District of Columbia, the Maryland Region, and the Northern Virginia Region. The second regional number, "Regional Total Adjusted" includes data from the United States Park Police. Because the Park Police information has only been recently collected, it is shown separately and the two regional totals are shown so that comparisons with previous years can be done.



How Safe Are Our Roads 2011