

# visualize2045

A LONG-RANGE TRANSPORTATION PLAN FOR THE NATIONAL CAPITAL REGION

---

## Document Outline and Timeline

Lori Zeller  
Transportation Planner

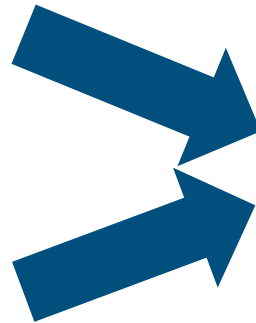
TPB Bicycle and Pedestrian Subcommittee  
March 20, 2018



# Big changes from past practice

---

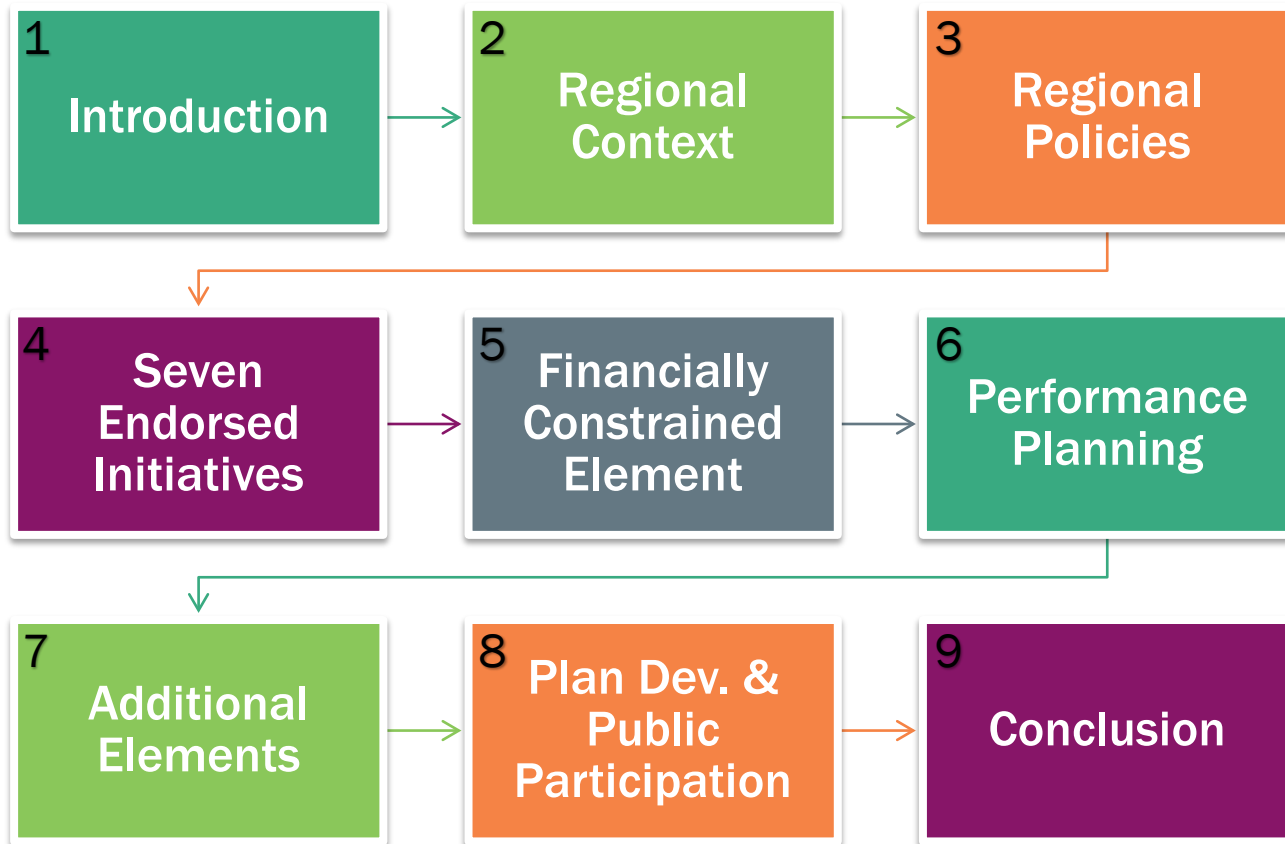
**Financially Constrained Element**  
(formerly known as CLRP)



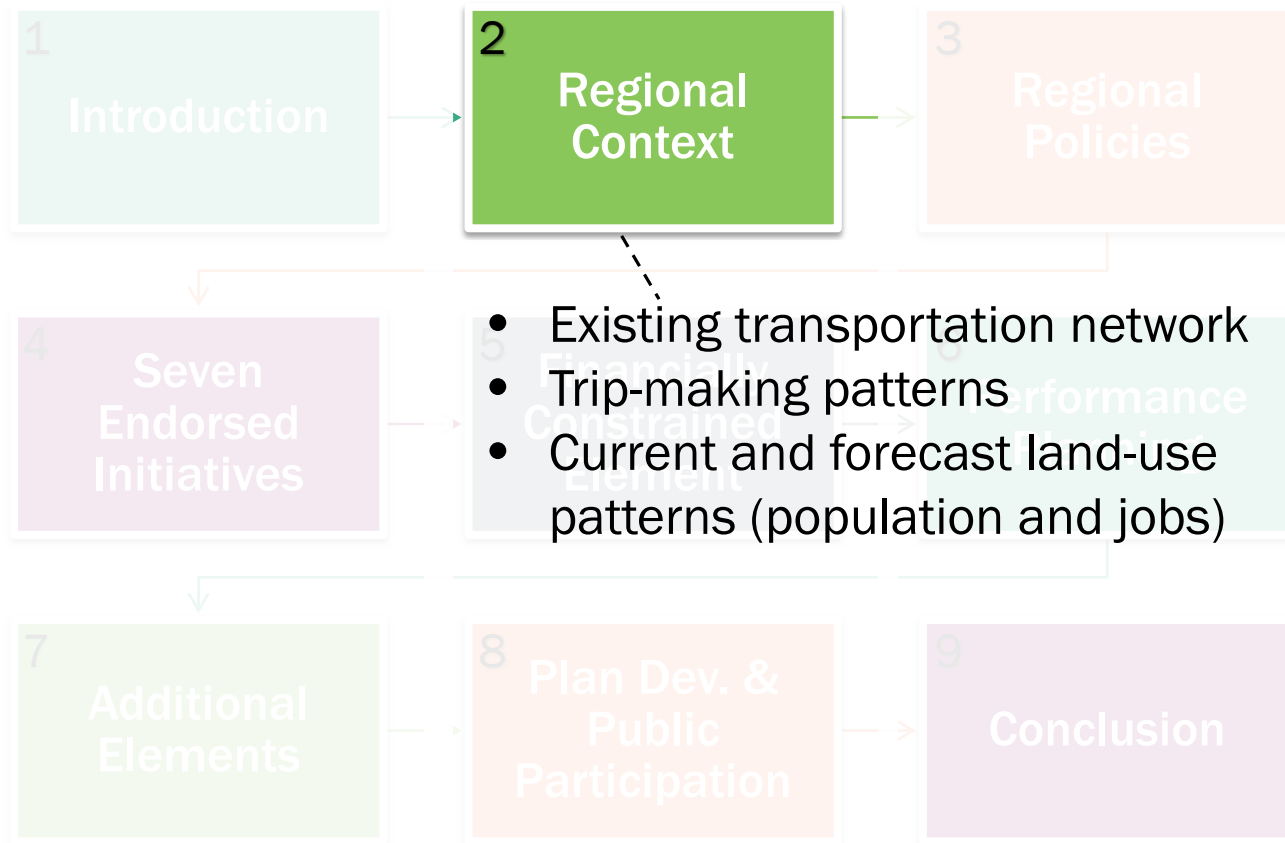
**Seven Endorsed Initiatives**  
**Unmet Needs (All-Build)**



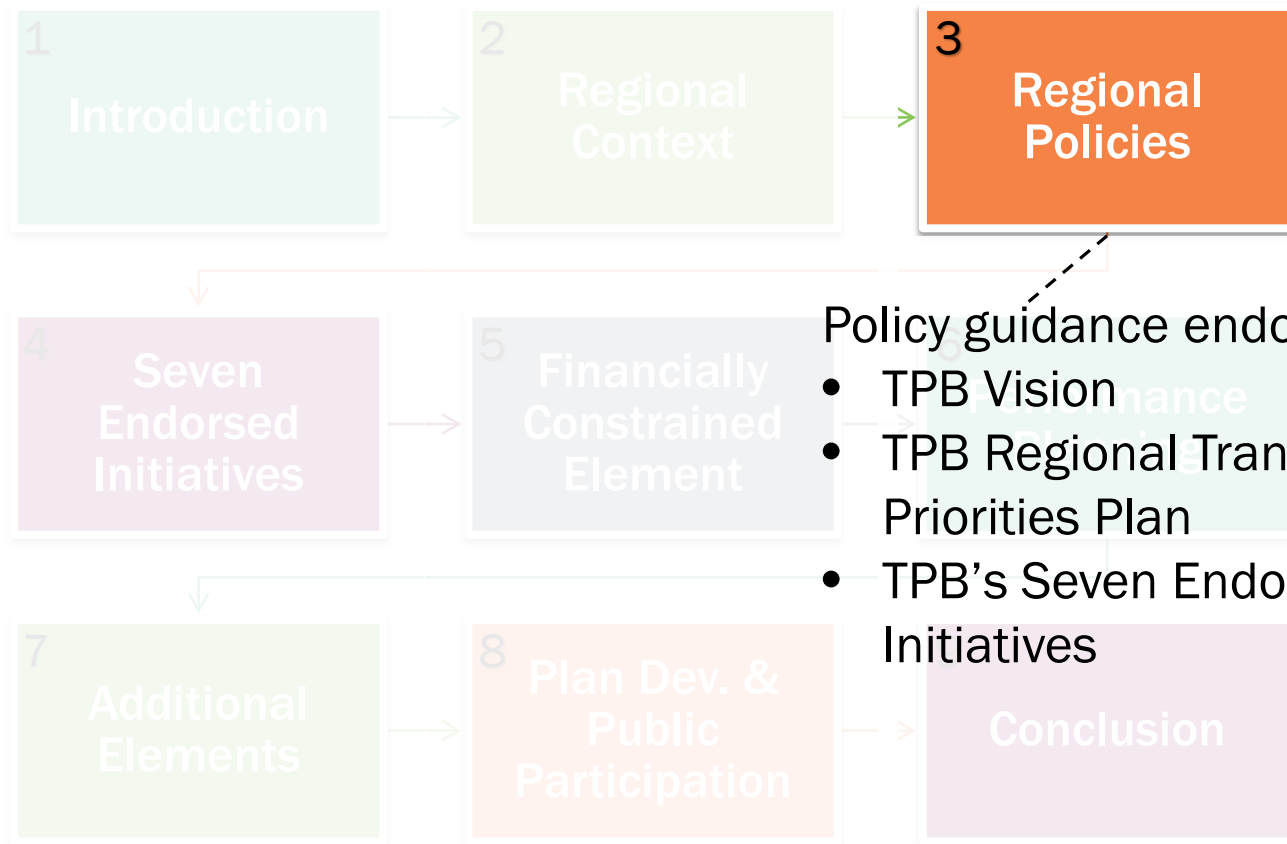
# Plan Outline



# Plan Outline



# Plan Outline

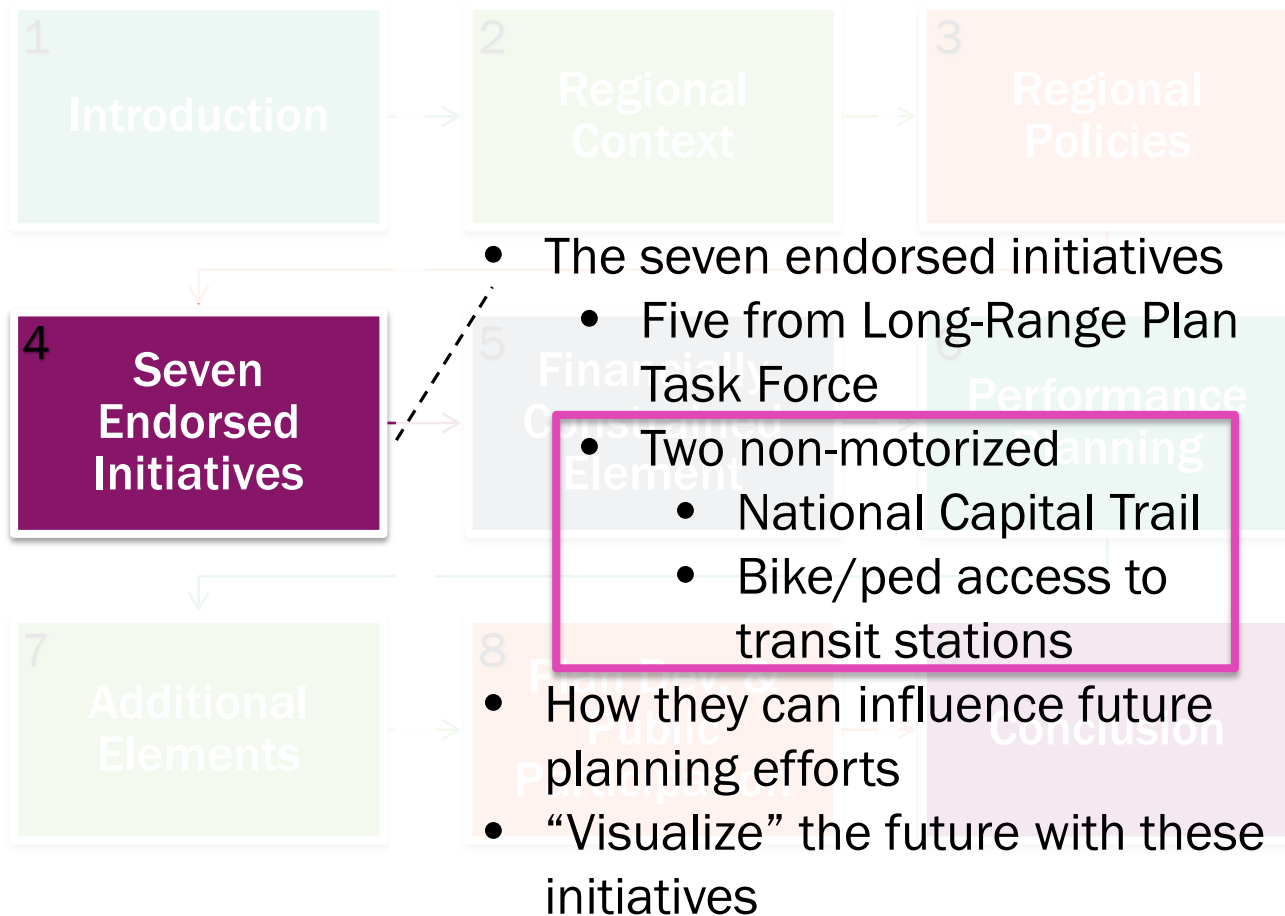


Policy guidance endorsed by TPB

- TPB Vision
- TPB Regional Transportation Priorities Plan
- TPB’s Seven Endorsed Initiatives



# Plan Outline



# Plan Outline

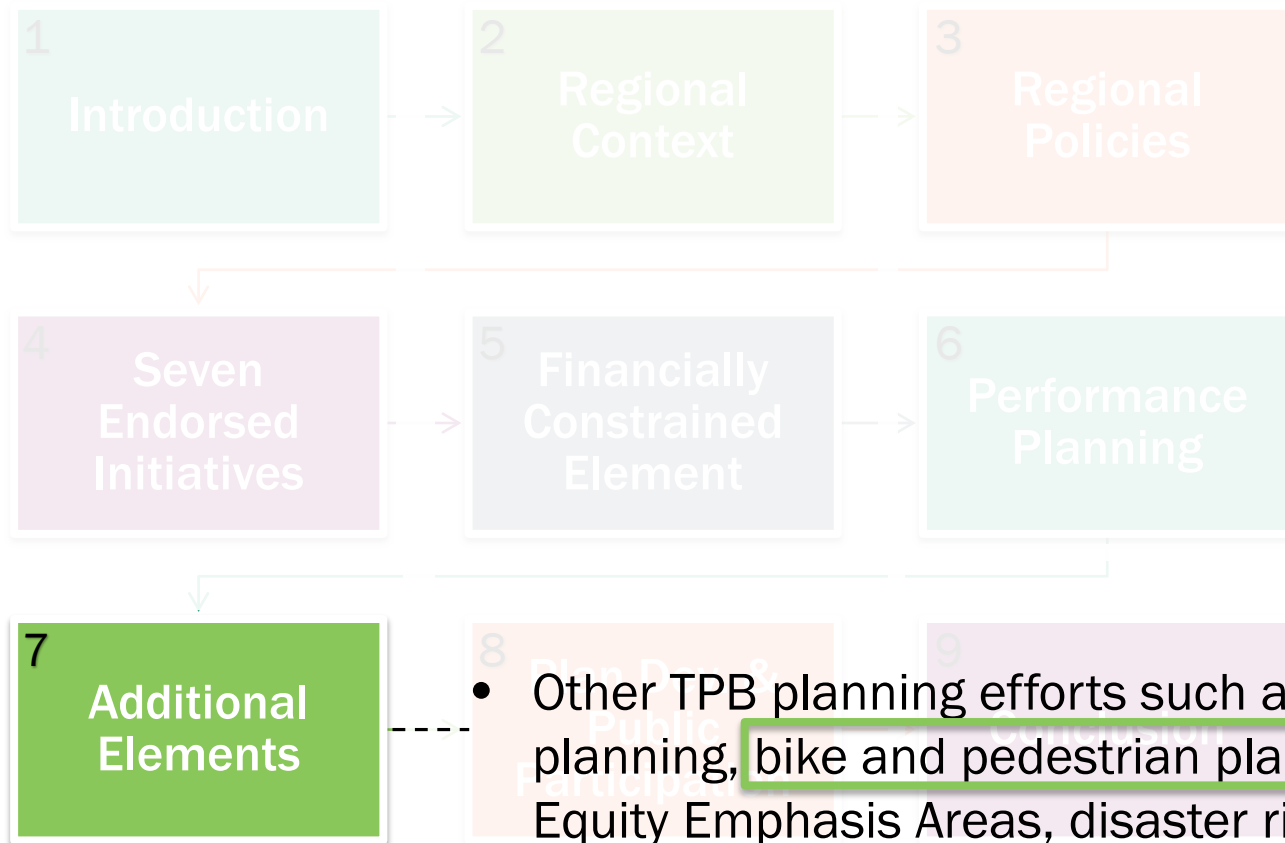


# Plan Outline





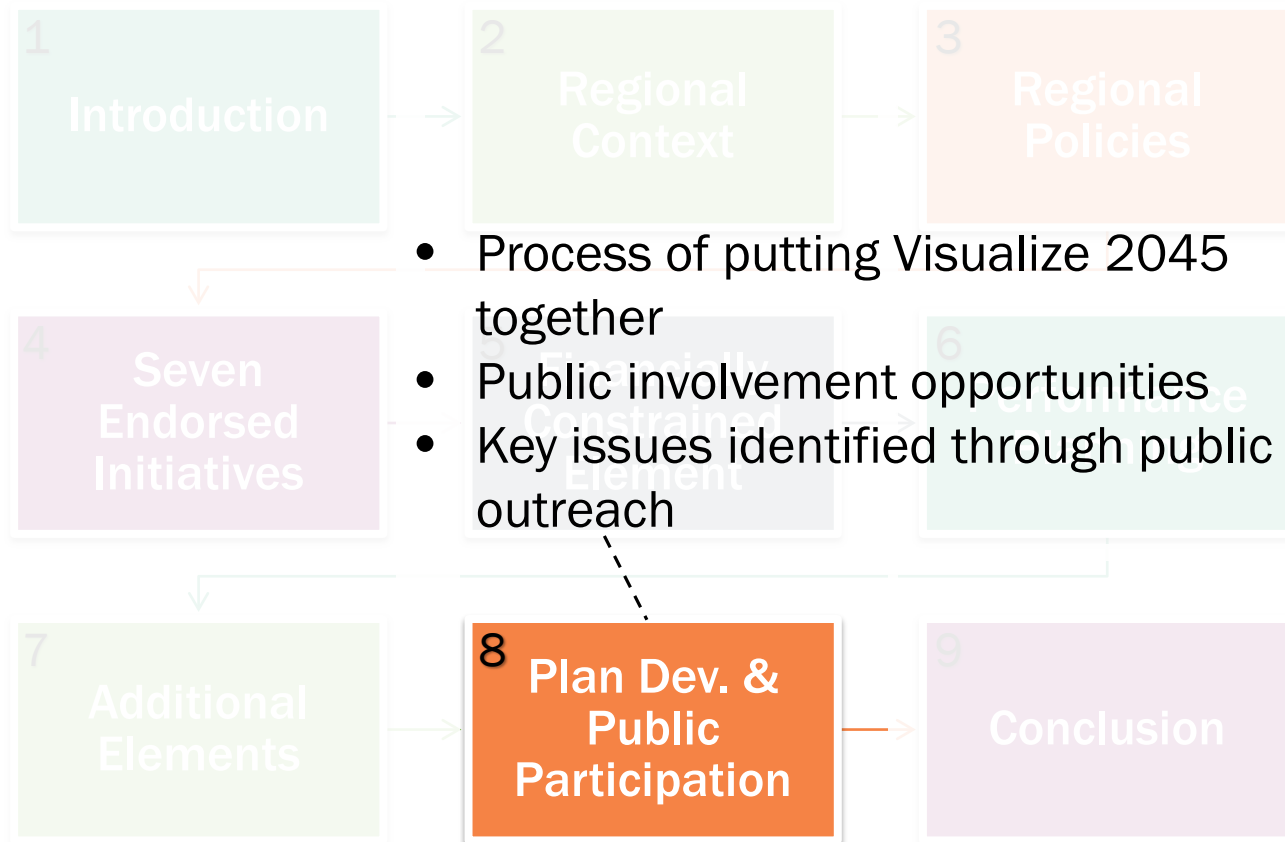
# Plan Outline



- Other TPB planning efforts such as freight planning, bike and pedestrian planning, Equity Emphasis Areas, disaster risk reduction, etc.



# Plan Outline



# Visualize 2045 Timeline

---

<b>Winter/Spring 2018</b>	Preparing Content for Visualize 2045 Plan Document
<b>Spring 2018</b>	Public Forums
<b>Summer 2018</b>	Technical Analysis
<b>September 2018</b>	Draft Plan Released for Public Comment and Public Open Houses
<b>October 2018</b>	Final TPB Approval



## Lori Zeller, AICP

Transportation Planner

(202) 962-3290

Lzeller@mwkog.org

[mwkog.org/tpb](http://mwkog.org/tpb)

---

Metropolitan Washington Council of Governments

777 North Capitol Street NE, Suite 300

Washington, DC 20002



National Capital Region  
Transportation Planning Board