

TRANSPORTATION SAFETY STUDY

Update

Bicycle and Pedestrian Subcommittee
July 17, 2019



National Capital Region
Transportation Planning Board

Presentation Items

- Analysis of Regional Roadway Safety Outcomes
(aka: the Regional Safety Study)
- Future TPB Safety Agenda Items
 - State DOT Safety Updates
 - Regional Safety Study Updates
 - Regional Highway Safety Targets



Regional Safety Study – Objectives

- Understand factors contributing to crashes in the NCR
 - Behaviors, roadway characteristics, crash types, external factors
- Determine where crashes are over-represented
- Identify and recommend proven effective solutions (policy, programmatic, project)
- Provide the TPB and member jurisdictions specific suggestions to improve safety
- Inform future Transportation Safety Subcommittee and Street Smart efforts



Regional Safety Study - Tasks

Task 1: Project Kickoff and Scope Finalization



- Kickoff meeting
- Ongoing project coordination
- Scope of work
- Monthly progress reports



Task 2

Benchmark Peer Evaluation

- Identify three peer MPOs
- Conduct peer region interviews
- Draft and Final Summary Table



Task 3

Collection and Analysis of Safety Data

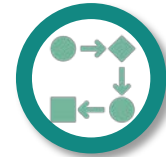
- Data Collection
- Data Analysis
- Draft and Final Crash Database and analysis results in excel format



Task 4

Synthesize Findings and Report Creation

- Draft implementation priorities, timelines, costs, and effectiveness
- Draft and Final Implementation Table
- Outline and Preliminary figures for final report



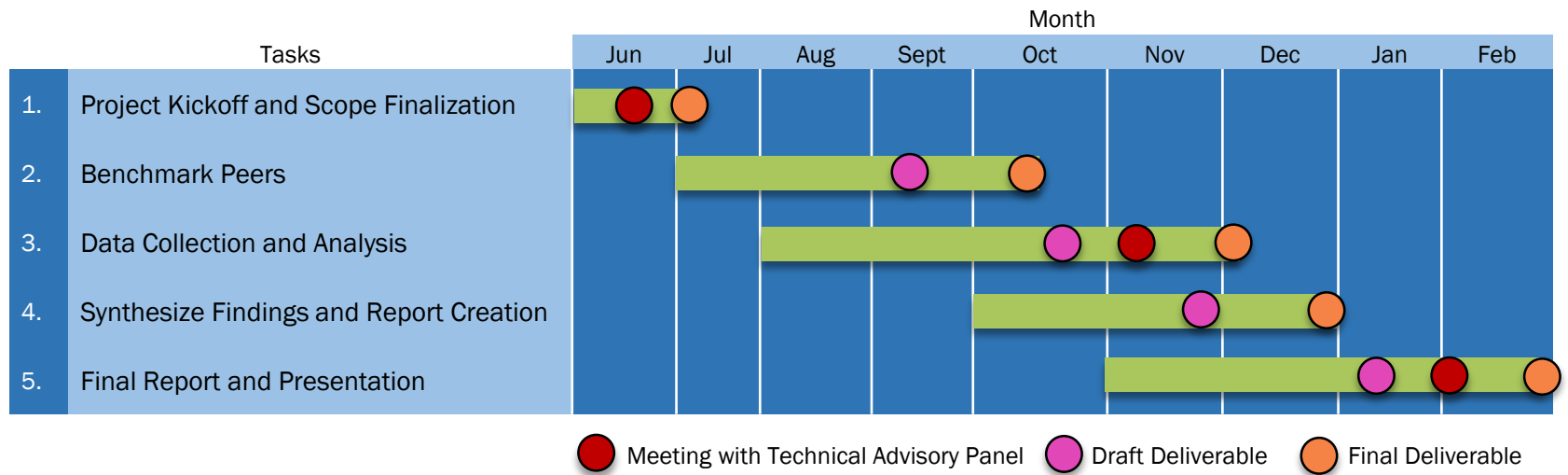
Task 5

Final Report and Presentation

- Draft and Final Report
- Draft and Final PowerPoint



Regional Safety Study - Schedule



Regional Safety Study – Task 2



Task 2

Benchmark Peer Evaluation

- Evaluation criteria
- Proposed peers
- Interview questions



Regional Safety Study – Task 2

Proposed Selection Criteria:



MPO Size



Institutional Structure



Access to Safety Funding/Ability to Fund Safety Improvements



Safety in the Project Prioritization Process



Performance Targets



Regional Safety Study – Task 3



Task 3

Collection and Analysis of Safety Data

- Data Collection
 - Data needs vs availability
 - Data review meetings
- Data Analysis



Regional Safety Study – Task 3

- Data Collection Elements
 - Crash data
 - Traffic and roadway data
 - Populations and demographics
 - Project locations, land use, and infrastructure locations
 - Existing analysis



Regional Safety Study – Task 3

1) Benchmarking

5 Year Crash Trends

- By Jurisdiction
- By Maintaining Authority
- By Roadway Classification
- By Severity

Crash Maps

- Regional
- By Jurisdiction
- Total crashes
- Severe crashes

2) Crash Type/Contributing Factor

Crash Type Trends

- By Severity
- By Jurisdiction
- Systemic countermeasures

Contributing Factor Trends

- By Severity
- By Jurisdiction
- Regional emphasis areas and countermeasures



Regional Safety Study – Task 3

3) Priority Locations

Network Screening

- Create Methodology
 - Crash history
 - Focus facilities or surroundings
 - Infrastructure risk factors
- Identify and Prioritize Safety Locations

Priority Lists and Maps

- Visualize Priority Locations



Regional Safety Study – Task 4



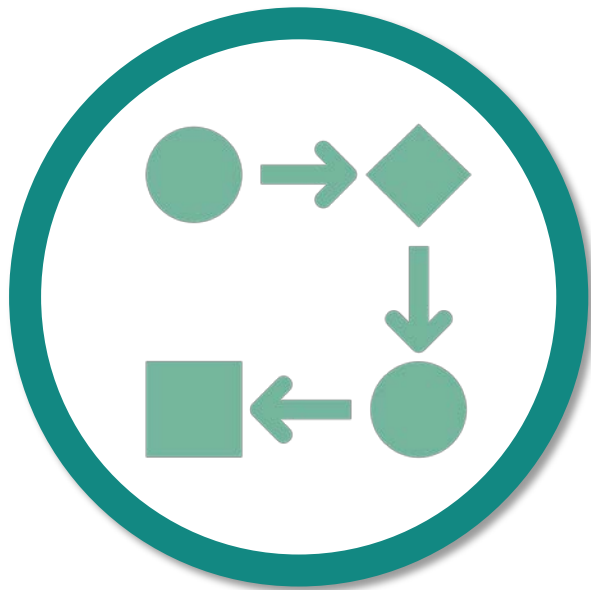
Task 4

Synthesize Findings and Report Creation

- Recommendations
- Draft and Final Implementation Table



Regional Safety Study – Task 5



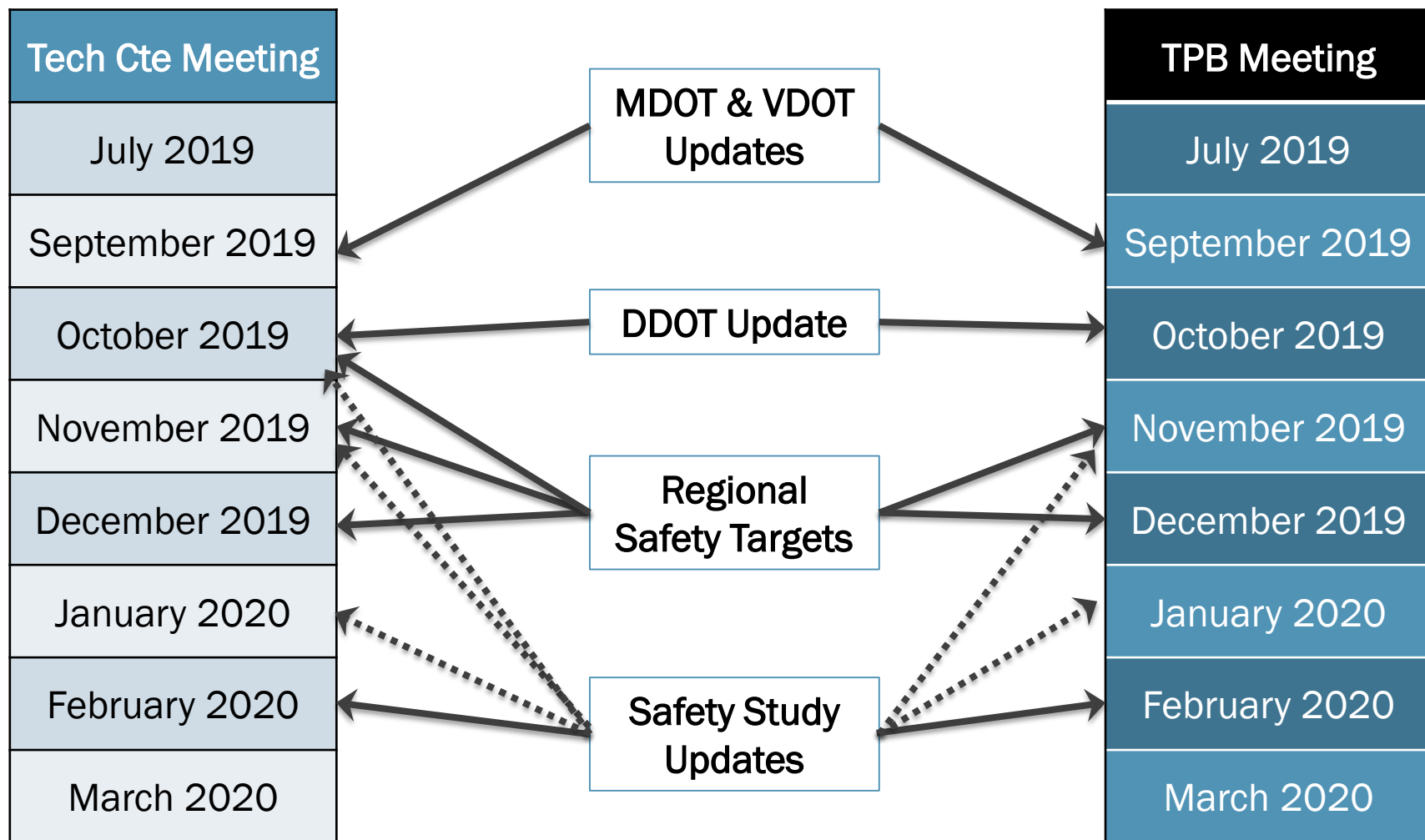
Task 5

Final Report and Presentation

- Draft and Final Report
- Draft and Final PowerPoint



TPB Safety Agenda Items (Initial Thoughts)



Jon Schermann

TPB Transportation Planner

(202) 962-3317

jschermann@mwkog.org

mwkog.org/tpb

Metropolitan Washington Council of Governments

777 North Capitol Street NE, Suite 300

Washington, DC 20002



National Capital Region
Transportation Planning Board