

TRACING MIGRATION

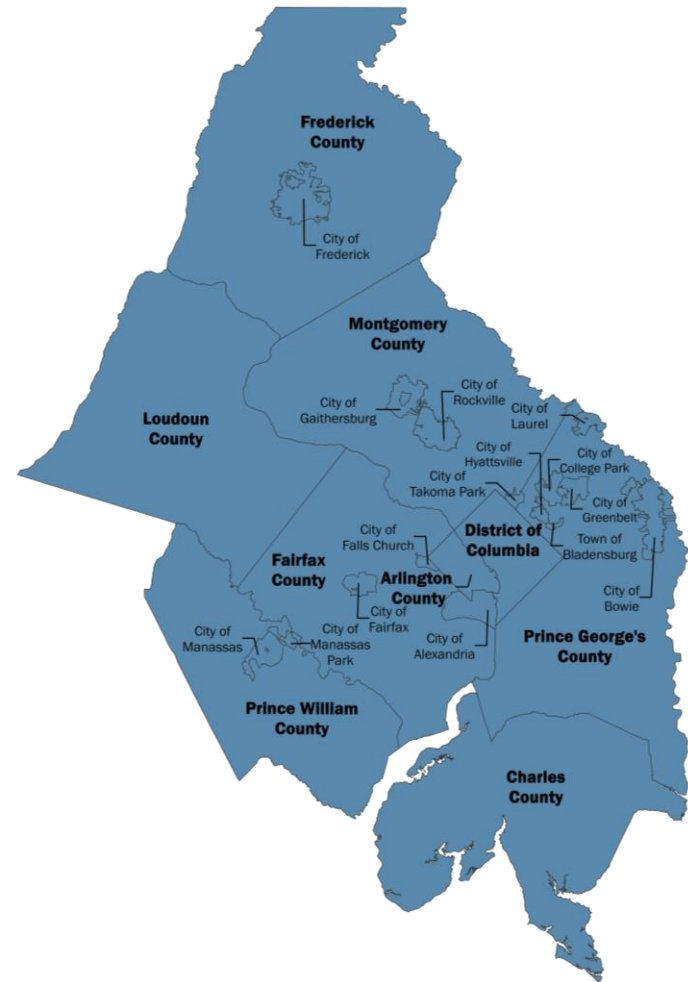
Migratory flows within the COG footprint

Jaleel Reed
Regional Planner

Cooperative Forecast Committee
March 03, 2020

About COG

- The Metropolitan Washington Council of Governments (COG) is an independent, nonprofit association
- Brings area leaders together to address major regional issues in the District of Columbia, suburban Maryland and Northern Virginia
- Membership is comprised of 300 elected officials from 24 local governments, the Maryland and Virginia state legislatures, and U.S. Congress



Migration Overview

- Net Migration = Net Domestic Migration (NDM) + Net International Migration (NIM)

Net Domestic Migration

IRS
CMS
NUMIDENT
Group Quarters Change



Net International Migration

Foreign Born ROYA
Foreign Born Emigration
US to/from PR ROYA
Native Born Migration
Armed Forces to/from Overseas

Source: <https://www2.census.gov/programs-surveys/popest/technical-documentation/methodology/2010-2018/2018-natstcopr-meth.pdf>



Focusing on NDM

“For state and county total estimates, we calculate county-to-county net domestic migration based on four data sources:

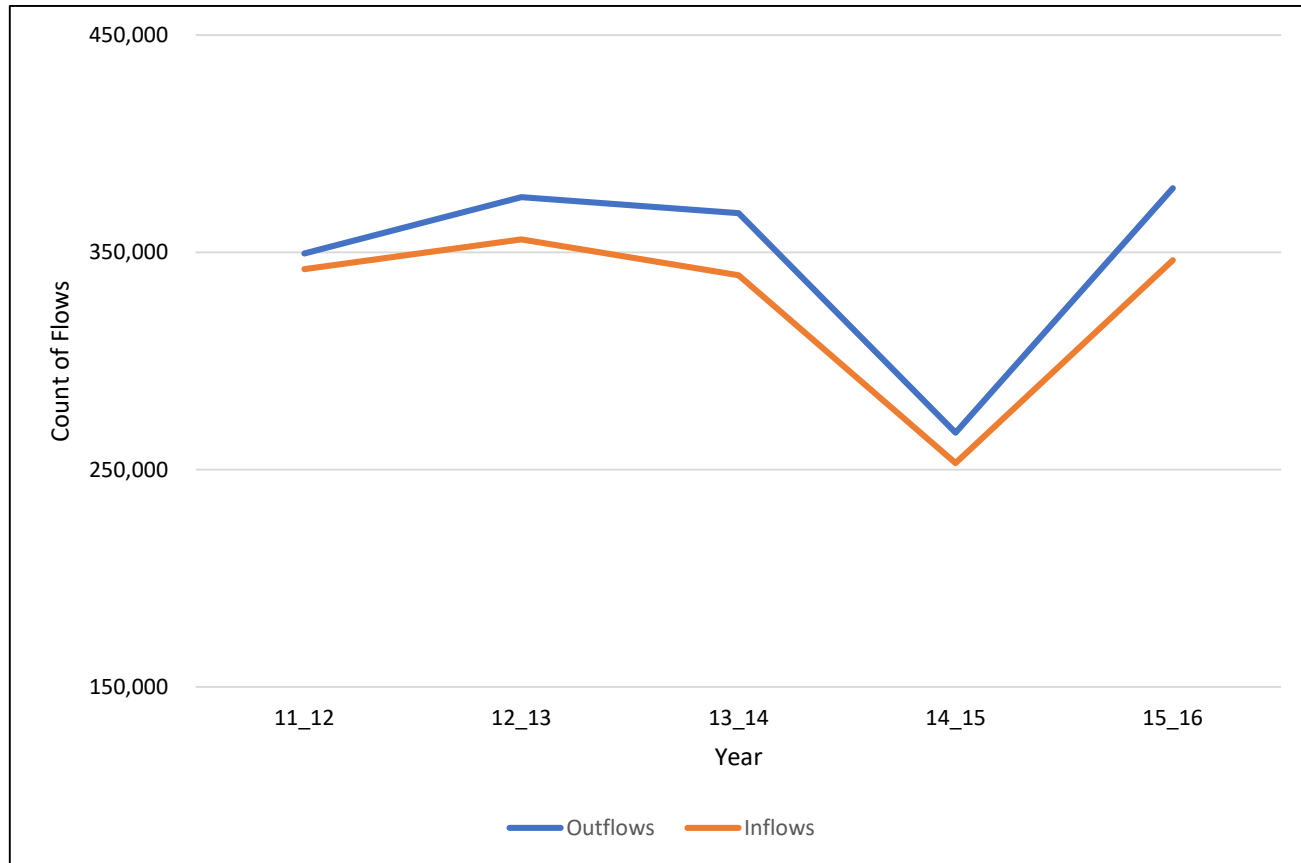
- 1. Internal Revenue Service (IRS) tax return data for ages 0-64
- 2. Medicare enrollment data from Centers of Medicare and Medicaid Services (CMS) for ages 65+,
- 3. Social Security Administration’s Numerical Identification File (NUMIDENT) for all ages
- 4. Change in the group quarters population (described in the “Group Quarters” section)”

Source: <https://www2.census.gov/programs-surveys/popest/technical-documentation/methodology/2010-2018/2018-natstcopr-meth.pdf>

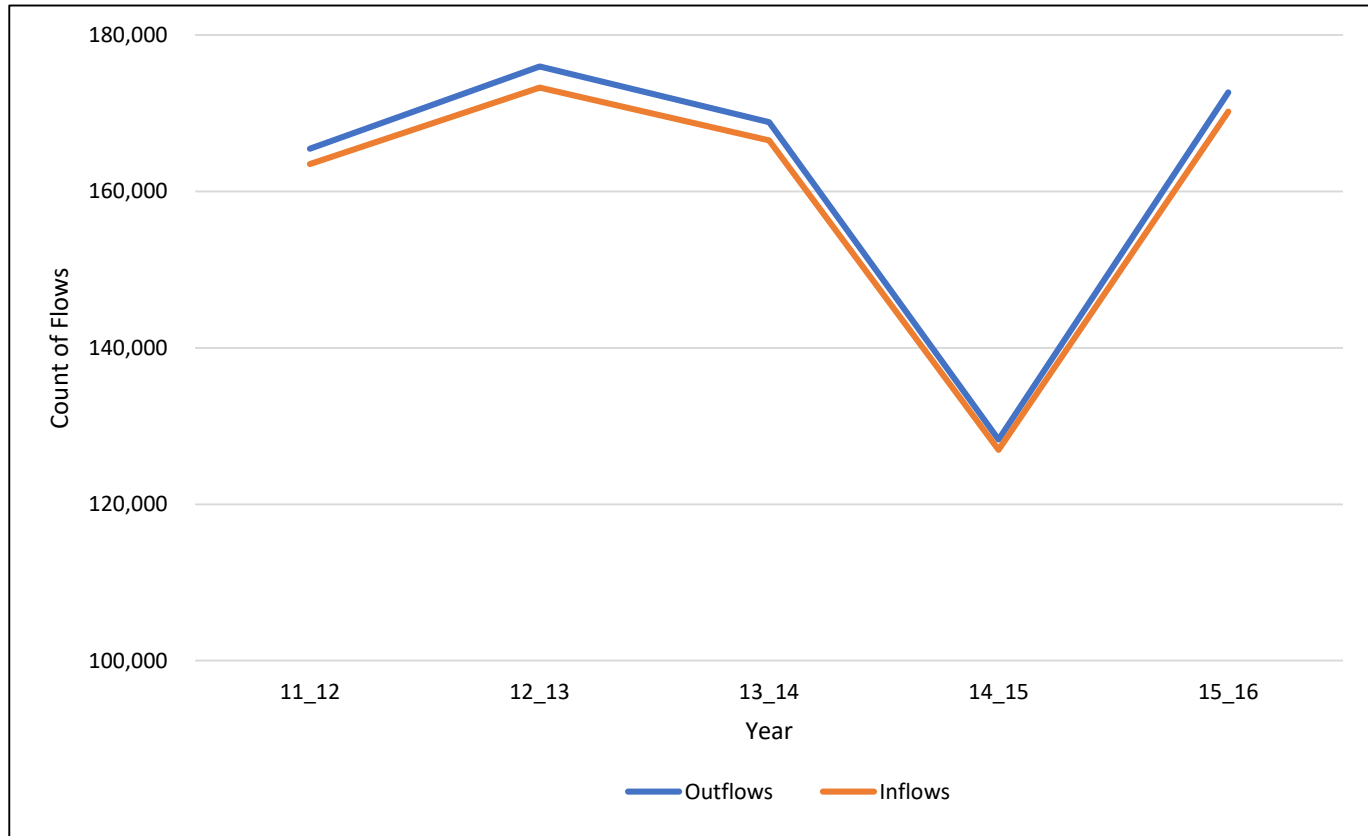
Focusing on NDM: COG Flows according to IRS

- Overall, according to the IRS, from 2011 to 2016, in total, the COG region experienced upwards of 90,000 unique outflows from the region
- Counties with the largest populations accounted for the largest percentage of outflows and inflows respectively
- While the majority of inflow and outflow activity occurred from and to areas beyond the COG region, a significant percentage of migration activity was intra-COG
- In terms of inflows and outflows, non-COG counties in the Southern portion of the United States contributed and attracted the majority of migrants from 2011-2016

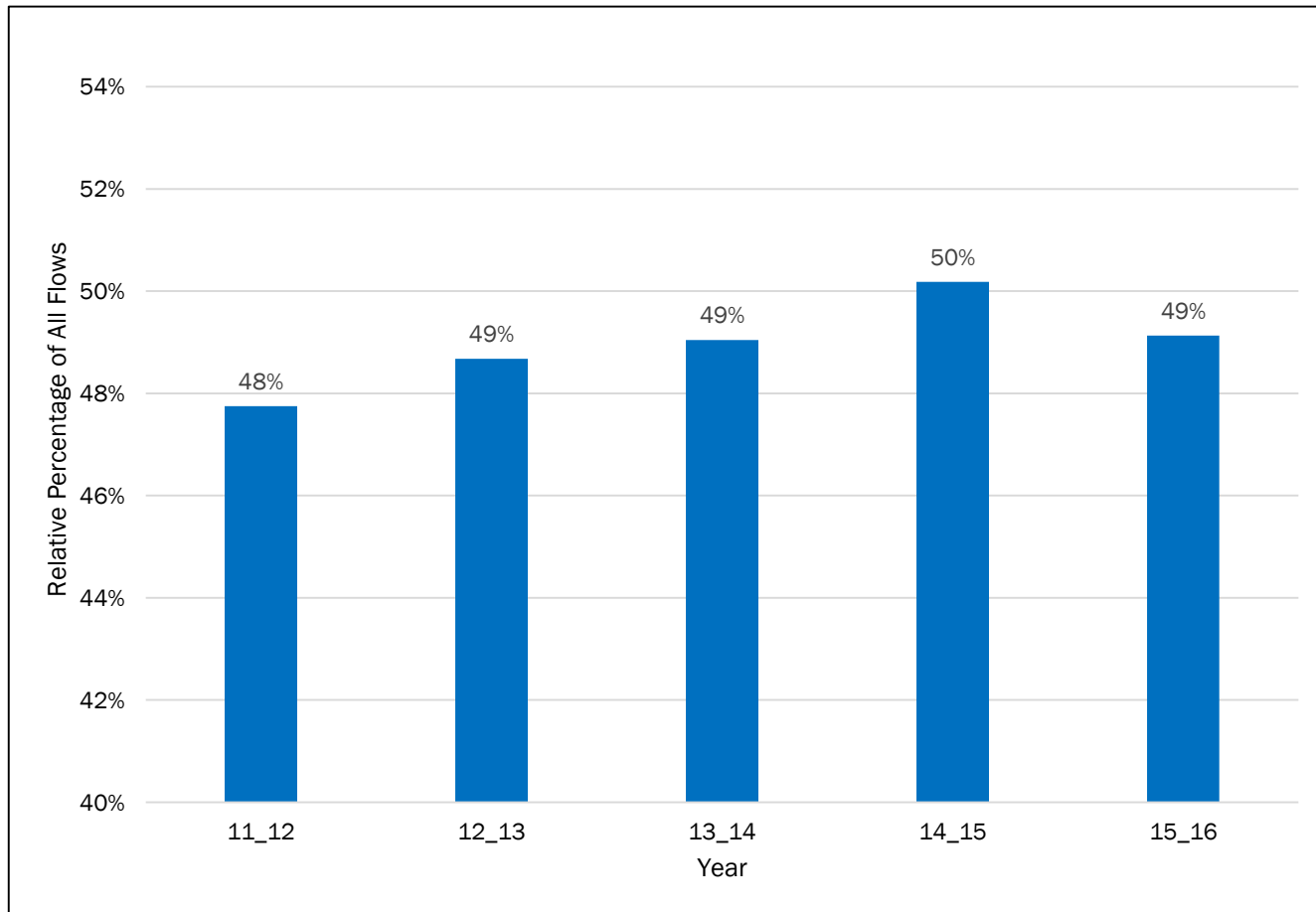
Migratory Outflow vs Inflow Totals 11-16



Intra-COG Outflows vs Inflows 11-16



Percentage of Intra-COG inflows 11-16

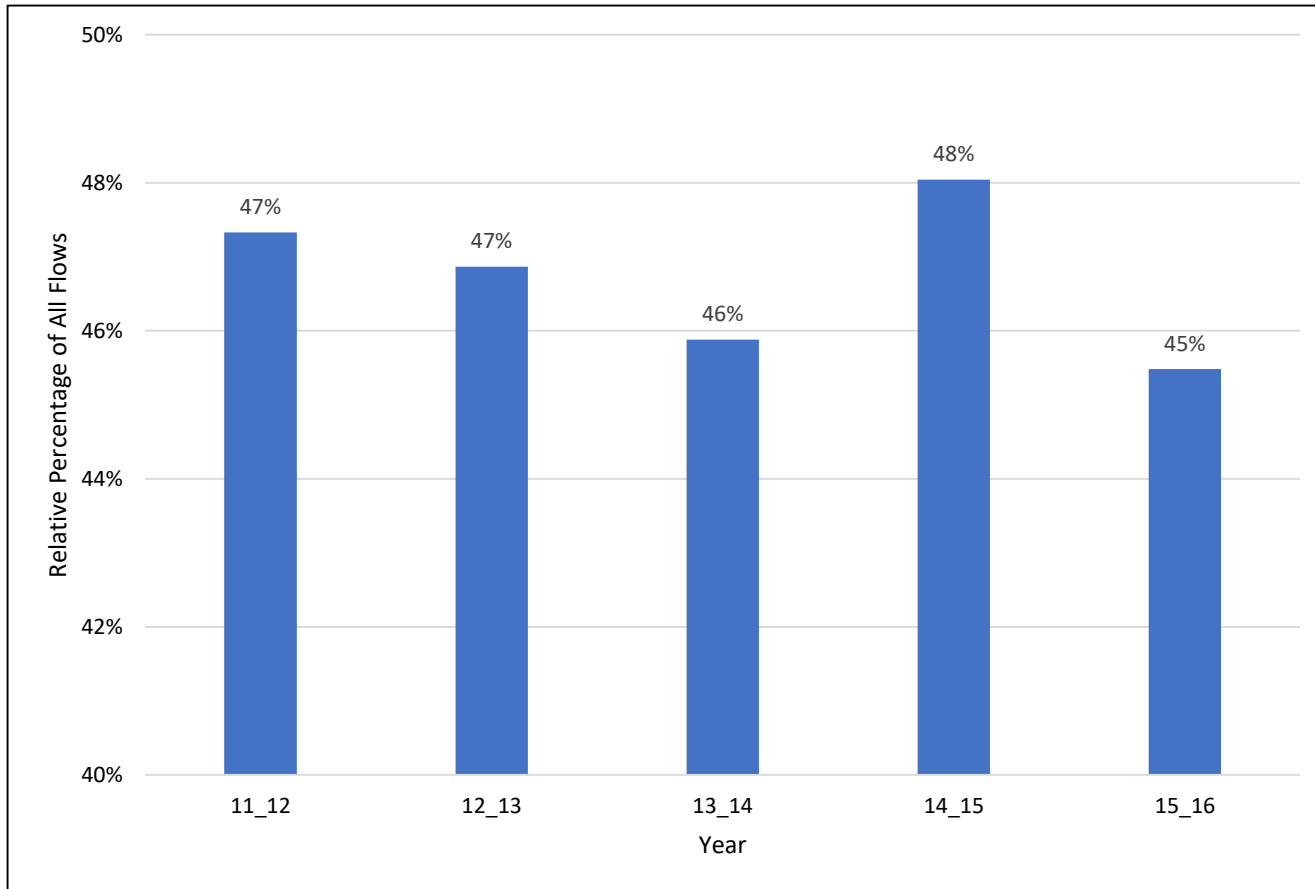


Inflows by Mega-Region 11-16

Region	11_12	12_13	13_14	14_15	15_16
South	238,639	250,582	229,281	169,659	234,260
COG South	163,475	173,266	166,507	126,953	170,214
Non-Cog South	75,164	77,316	62,774	42,706	64,046
Undefined US	36,165	36,117	53,503	44,801	54,191
Northeast	26,201	26,899	23,656	15,328	23,357
West	20,762	21,268	15,766	8,952	16,826
Foreign	10,627	11,172	10,938	10,657	10,824
Midwest	9,938	9,907	6,372	3,578	6,997
Total	342,332	355,945	339,516	252,975	346,455



Intra-COG Outflows 11-16



Outflows by Mega-Region 11-16

Region	11_12	12_13	13_14	14_15	15_16
South	249,695	269,553	253,362	183,582	262,646
COG-South	165,443	175,976	168,860	128,257	172,650
Non-Cog South	84,252	93,577	84,502	55,325	89,996
Undefined US	37,593	39,568	61,069	48,024	59,249
West	21,375	24,064	20,284	11,991	22,791
Northeast	20,745	22,345	16,745	12,769	18,550
Foreign	12,349	10,797	10,192	7,696	10,376
Midwest	7,814	9,140	6,398	2,915	5,973
Total	349,571	375,467	368,050	266,977	379,585



Jaleel Reed

Regional Planner

(202) 962-3321

jreed@mwkog.org

mwkog.org

777 North Capitol Street NE, Suite 300

Washington, DC 20002



Metropolitan Washington
Council of Governments