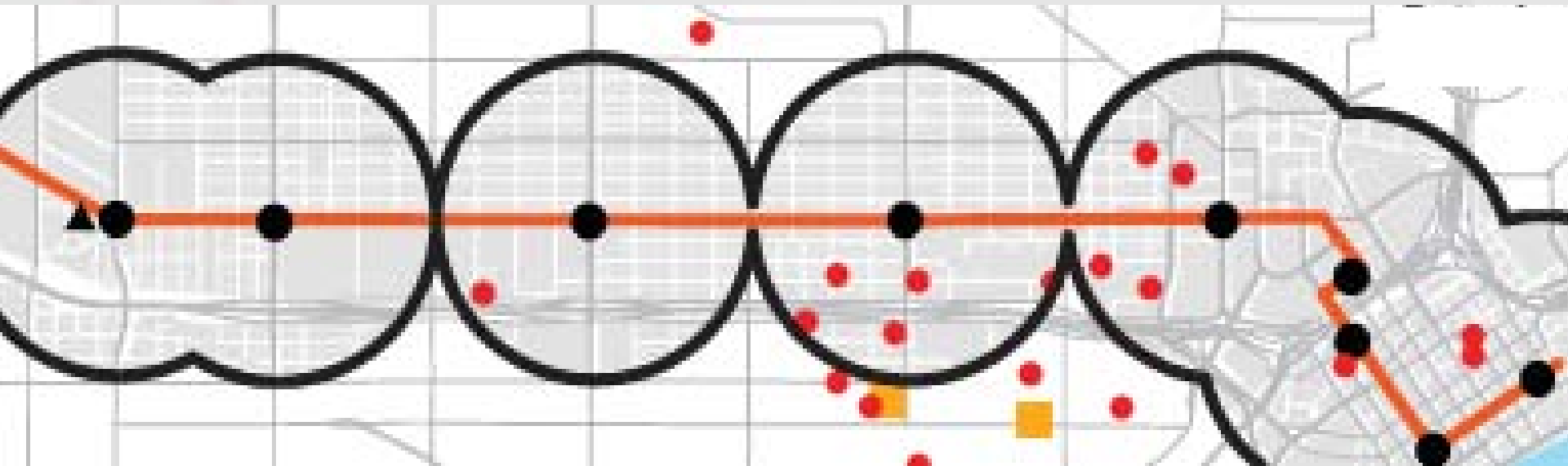


## **Sustainable Regional Planning**



# **Complete Communities in Transit Corridors**



# Overarching Goals

- Equitable Transit-Oriented Development: *Access to Affordable Housing, Jobs and Services*
- Support Local Economy
- Create Vibrant Transit-Oriented Communities
- Create more Effective Regional Partnerships

# Regional Challenge

- Spatial shift in where people want to live and how they get around
- Currently experiencing and expect more robust growth in the region's core markets around transit and walkable communities
- This new growth threatens to displace long-time residents and businesses
- Affordability and Accessibility Tradeoff: *Move away from transit or fight to stay near transit*

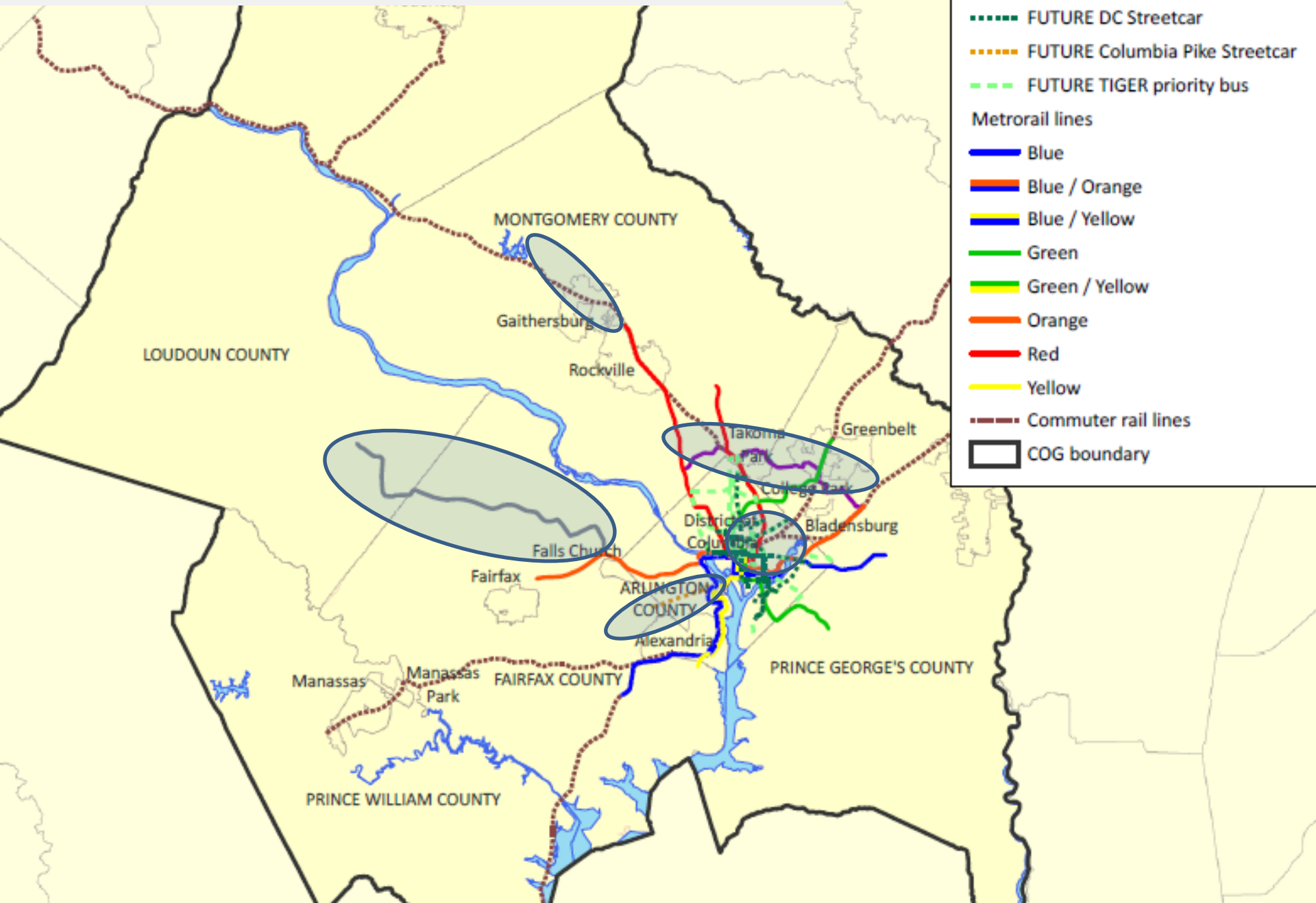
# Project Approach

- Support mixed-income communities and equitable development around our transit stations before growth pressures force low-income families to move away from transit
- Plan to channel growth prioritize investments around existing and future transit corridors and stations

# Project Approach

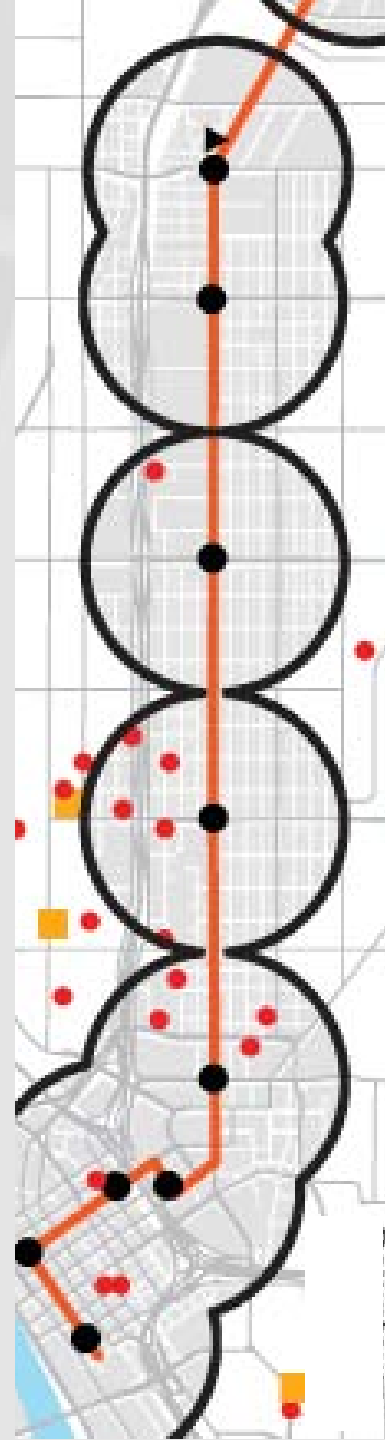
- **Focus on Equitable TOD**
- **Comprehensive**
  - **Environment**
  - **Economy**
  - **Equity**
- **Planning Geography**
  - **Commuter Rail Network**
  - **Metrorail Network**
  - **New Transit Lines (*limited to those in the CLRP*)**
  - **TIGER Priority Bus Network**

# Planning Geography



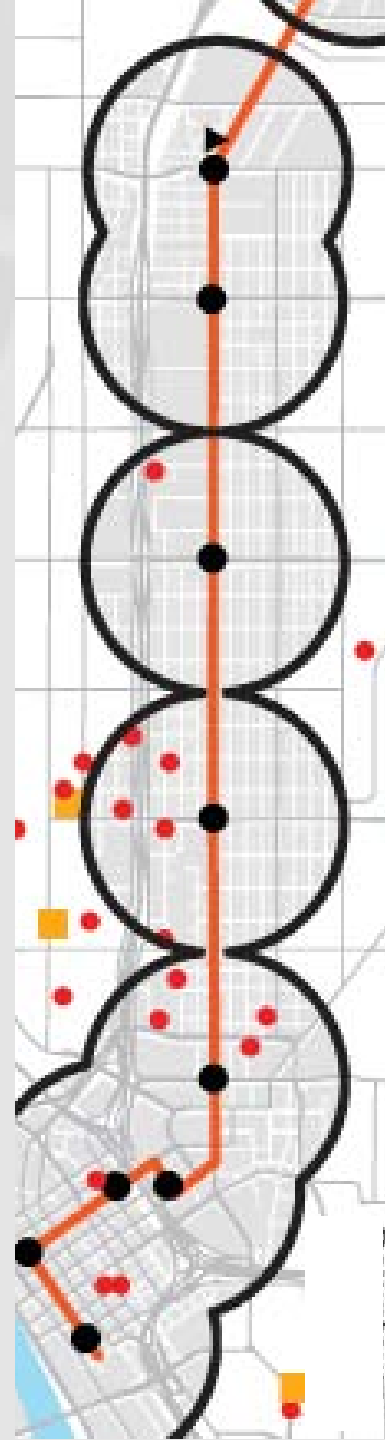
# Implementation Activities Under Consideration

- Establish an Equity Network to facilitate broad participation by residents and community groups
- Research and Analysis
- TOD Phasing and Investment Framework— TOD typologies to guide short-and long-term investments in transit communities



# Implementation Activities Under Consideration

- Demonstration Plans for a limited number of transit corridors
- Launch new or existing Tools (e.g. GreenPATH)
- Identify policy, administrative, regulatory changes (i.e. inclusionary zoning, capital improvements, )





# Next Steps

- Formalize consortium and partnerships and engage Region Forward Coalition
- Develop work program, budget and timeline
- Identify local match and in-kind contributions