



Maryland
Department of
the Environment

Cheverly Air Quality Partnership

7-24 -24

Noble Smith, Environmental Justice Coordinator

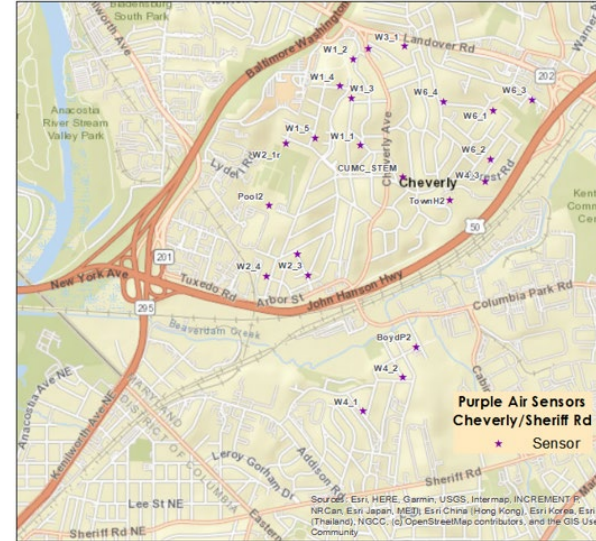
Air and Radiation Administration

Maryland Department of the Environment



Cheverly Air Quality Partnership: Background

- In the Summer of 2021, MDE's Air and Radiation Administration started a partnership and targeted enforcement initiative with the Town of Cheverly, MD
- MDE joined the partnership that was already established between the town of Cheverly, surrounding towns, and CEEJH to create a hyper-local air sensor network to analyze local air quality





Cheverly Air Quality Partnership: Background

- Three MDE components of the 2021 Initiative:
 1. MDE implemented an intensive targeted inspection initiative in and around the Cheverly area, from June 1, 2021 through July 30, 2021. MDE conducted inspections and observations at permitted emission sources and conducted area-wide scans and observations at non-permitted sources such as locations where diesel trucks or buses idle for long periods.
 2. MDE evaluated the potential correlation between higher levels of measured PM_{2.5} and traffic conditions.
 3. MDE used its regulatory monitors to calibrate the sensors and performed an analysis of PM_{2.5} levels in the Cheverly area during the 2021 Initiative.



2022- 2024 Follow-up Activities/Initiatives

The data and analysis from the 2021 Initiative provide a starting point for MDE to continue the partnership with the Cheverly area and CEEJH to conduct follow-up activities

- continued use of the community-based air monitoring/sensor network and further community input to target inspection efforts and other analyses in the Cheverly area;
- reduction in unnecessary, potentially illegal idling;
- increased efforts with CEEJH, other researchers, interested parties and EPA to improve techniques and tools for evaluating potentially inequitable exposure to air pollution; and
- identification of other potential partnership opportunities with the Cheverly area community



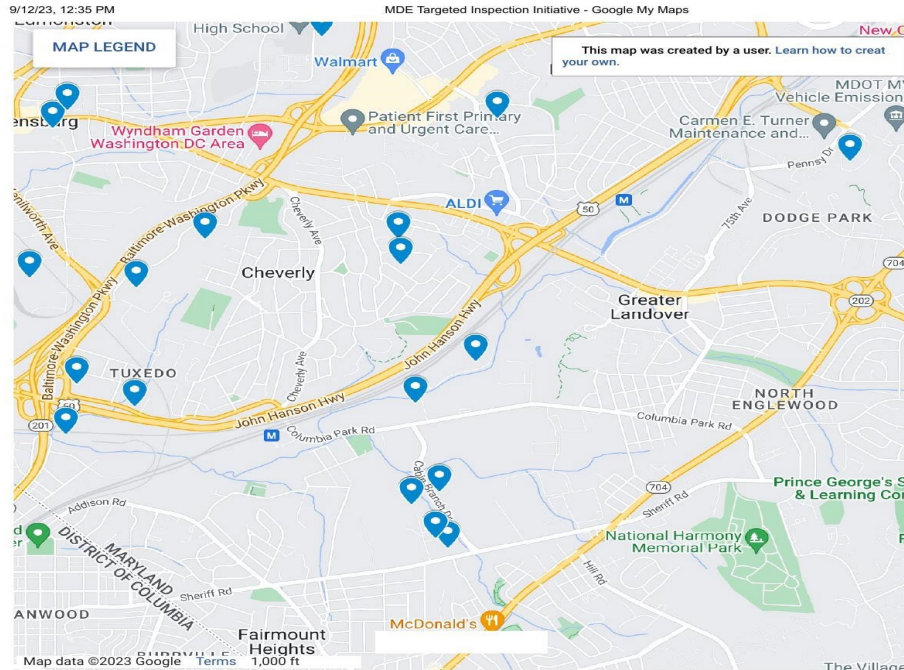
Follow-up Activities: Enhanced Inspection Initiatives

- **Follow-up Activity:** continued use of the community-based air monitoring/sensor network and further community input to target inspection efforts and other analyses in the Cheverly area, including fugitive dust.
- MDE is continuing to do area scans and conduct site visits at sites in the Cheverly area on a frequent basis.
- A monthly report on inspections is sent to Cheverly via email and MDE is discussing other ways to provide updates via the web





Follow-up Activities: Enhanced Inspection Initiatives



Cheverly area sources with operating permits issued by ARA: Aggregate Industries, Joseph Smith and Sons, Aggregate and Dirt Solutions, Brandywine Sand and Gravel

Cheverly area sources with ARA permits/registrations for small boilers, spray booths, non-emergency generators: Anchor Construction, Pepsi Bottling Plant, Washington Woodworking, Whole Foods Distribution Center

Cheverly area sources not permitted by ARA: Greyhound Bus, K. Neil Trucks, Claybrick Road and Tuxedo Road Construction Sites



Follow-up Activities: Reductions in Idling

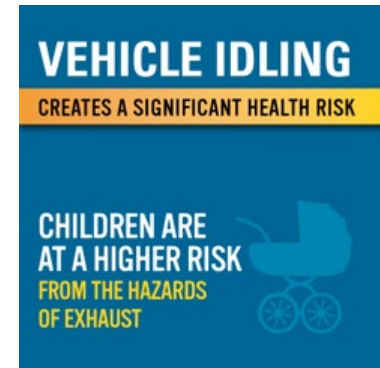
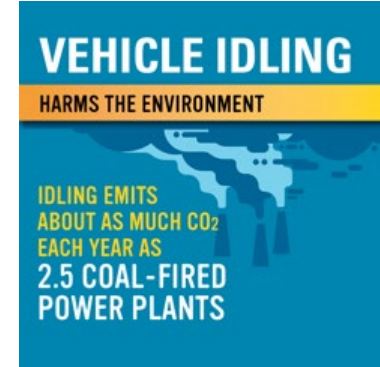
- In June 24, the Maryland State Police (MSP) conducted a commercial motor vehicle inspection and enforcement initiative in Cheverly at the request of MDE.
- The initiative's ultimate goals were to educate drivers on Maryland's anti-idling laws and decrease future environmental impact. Each inspection was accompanied by the issuance of the MDE anti-idling compliance advisory letter.
- MDE has worked with the MSP to set-up the same inspection initiative for this summer. We will report the results to Cheverly upon completion.





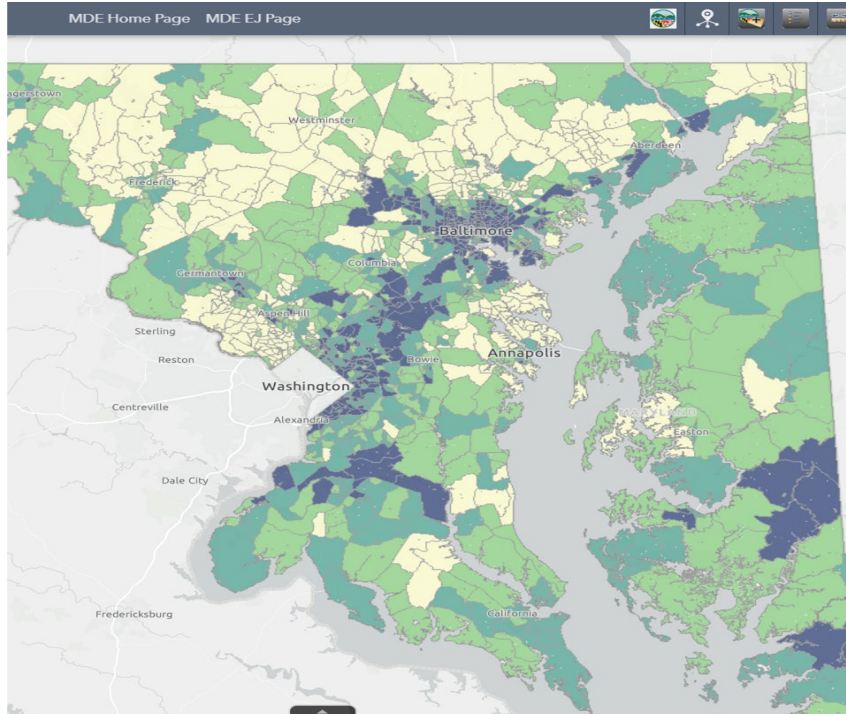
Follow-up Activities: Reductions in Idling

- MDE also continues our education and outreach campaign on anti-idling. MDE participated in multiple Cheverly events in 2023 and distributed anti-idling and other information:
 - Cheverly Ward 1 Community Day- July 13th
 - Cheverly Day- September 28th
- MDE also encourages citizens (in Cheverly and elsewhere) to refer idling complaints to the MDE air pollution hotline- 410-537-3215.
- MDE has received complaints on this hotline recently. MDE does not have enforcement authority over idling, so the Department referred, and will continue to refer those complaints to the MSP/local police.





Follow-up Activities: Local Air Quality Monitoring



- In November of 2022, EPA selected MDE, in conjunction with the University of Maryland (UMD) and community partners, for an almost \$500k American Rescue Plan (ARP) grant for local air quality monitoring networks.
- MDE/UMD are partnering with three communities under the ARP grant:
 - Cheverly (Prince George County)
 - Curtis Bay (Baltimore City)
 - Turner's Station (Baltimore County)
- Since the beginning of 2023, a Steering Committee comprised of MDE, UMD, and community representatives from each of the three communities has been meeting bi-weekly.



Follow- up Activities: Local Air Quality Monitoring

MDE worked with our community partners in Cheverly, Turner Station, and Curtis Bay to identify pollutants of concern and their sources

Community scientists identified pollutant sources such as coal dust and diesel truck traffic

Each community partner will receive a sensor package that will monitor the following pollutants:

Black Carbon, carbon monoxide (CO), nitric oxide (NO), nitrogen dioxide (NO₂), ozone (O₃), pm (PM_{1.0}, PM_{2.5}, PM₁₀), total volatile organic compounds (TVOC)





Follow- up Activities: More Partnership Opportunities

- MDE is continuing to participate in meetings and discussions with the Mayor and citizens of Cheverly to identify other potential partnership opportunities and issues in the Cheverly area
- MDE is currently participating in the following:
 - Bi-weekly CAB/EJAT call
 - Monthly calls with Cheverly and D.C. government
 - Calls with specific sources in Cheverly



Questions/Comments/Follow-Up

Noble Smith, Environmental Justice Coordinator

Air and Radiation Administration
Maryland Department of the Environment
1800 Washington Boulevard
Baltimore, Maryland 21230

noble.smith1@maryland.gov

410-537-3041 (O-Baltimore)