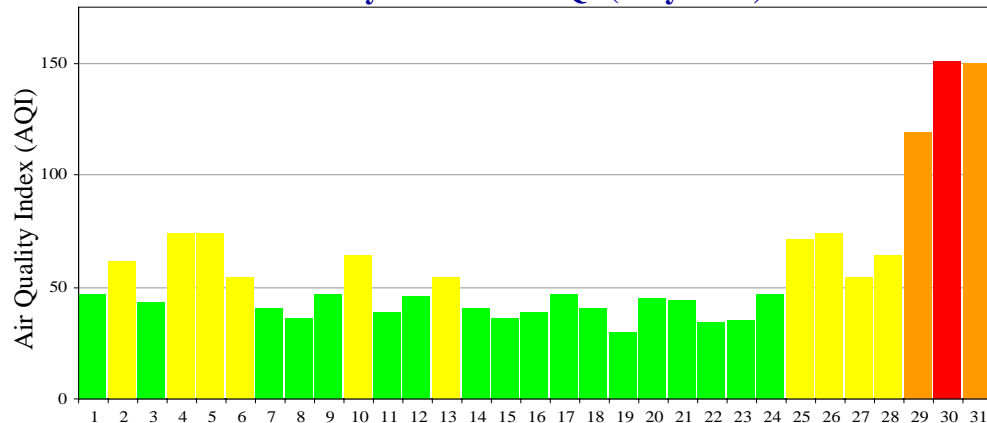




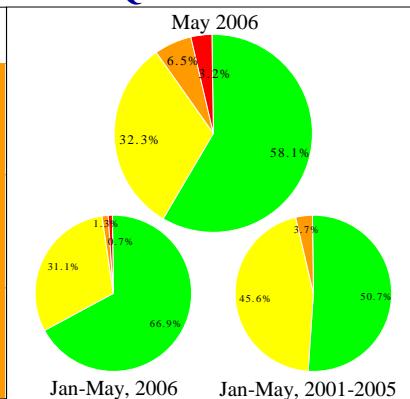
Quality of Air

for Baltimore Forecast Region, May 2006

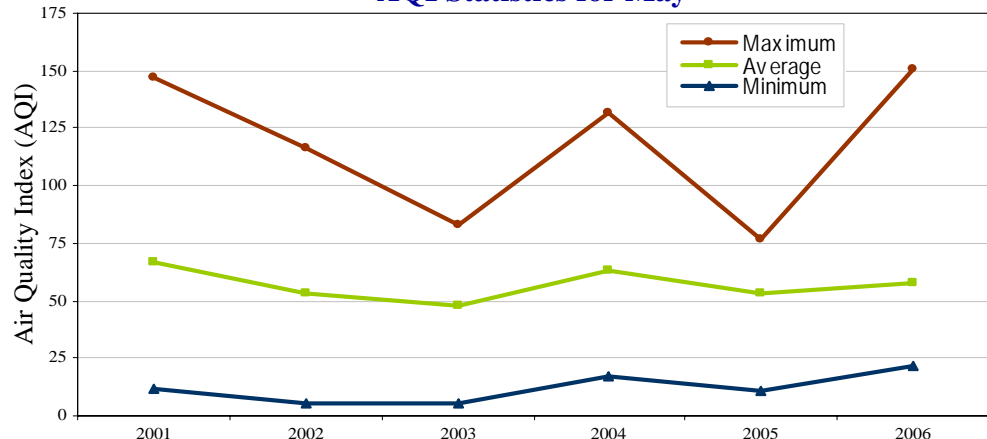
Daily Maximum AQI (May 2006)



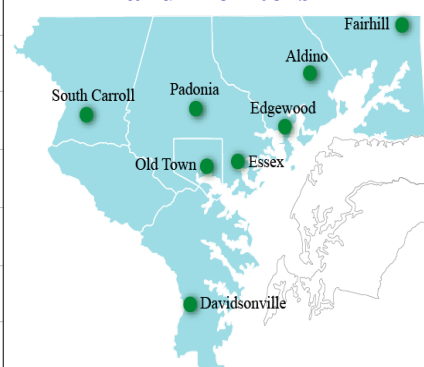
AQI Distribution



AQI Statistics for May



Baltimore Forecast Region and Monitors



Number Days Above 100 AQI vs. Days ≥ 90 F at BWI (2006 Data)

	Jan	Feb	Mar	Apr	May	Jun	Jul	Aug	Sep	Oct	Nov	Dec	Total
8-hr Ozone	0	0	0	0	3	n/a	n/a	n/a	n/a	n/a	n/a	n/a	3
24-hr PM Fine	0	0	0	0	0	n/a	n/a	n/a	n/a	n/a	n/a	n/a	0
Both Pollutants	0	0	0	0	3	n/a	n/a	n/a	n/a	n/a	n/a	n/a	3
Day ≥ 90 F	0	0	0	0	2	n/a	n/a	n/a	n/a	n/a	n/a	n/a	2

The Baltimore forecast region has experienced about normal air quality conditions during the first three weeks of May 2006 with Good to Moderate AQI levels. However, the last week of May was unusually warm and sunny due to a strong high pressure over the Mid-Atlantic. This weather system had led to the first widespread bad air quality episode across much of the Mid-Atlantic states where Unhealthy for Sensitive Groups or above on the AQI scale were observed. As always visit www.air-watch.net for the current air quality conditions and forecast or call the air quality hotline at 410-537-3247.

Air Quality Index (AQI)



MARYLAND DEPARTMENT OF THE ENVIRONMENT

1800 Washington Boulevard | Baltimore, MD 21230

410-537-3000 | 1-800-633-6101

Note: "SG" denotes Sensitive Groups.
Data presented for 2006 is preliminary.

