

Agenda Item #3

COG Climate, Energy and Environment  
Policy Committee  
Review of Committee Bylaws

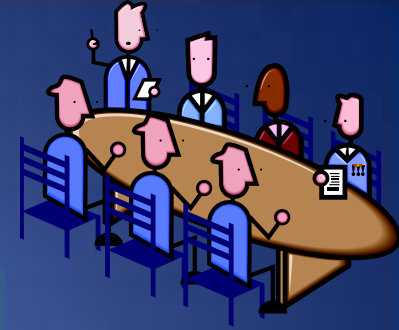
Stuart A. Freudberg

Director, Dept. of Environmental Programs

July 22, 2009



# Membership



## COG Members - 25

1 Elected Official per  
COG local government

+

1 Additional elected  
Official for:

District of Columbia (Mayor)

Fairfax County

Montgomery County (Exec)

Prince George County (Exec)

## Stakeholders - 17

Federal/Regional Agencies - 4

Electric & Gas Utilities - 3

Environmental Community - 3

Business Community - 3

Academic Community - 3

+ Chair, Air Quality Public  
Advisory Committee

## State Government - 10

MD, VA Senate + House

State Environment,

Energy, Transportation

Directors

## Regional\*

Transportation Planning Board

Metropolitan Washington  
Air Quality Committee

WMATA Board of Directors

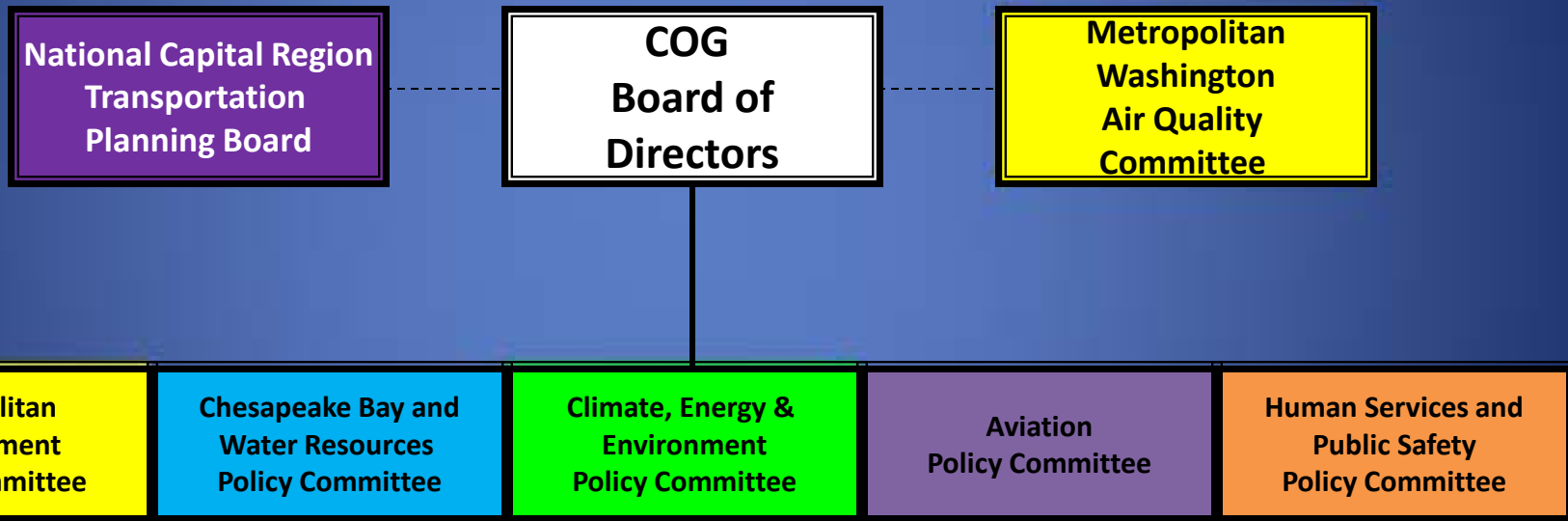
\* Added if not represented by COG members.

# Voting



- Quorum –  $1/3$  of voting members (or alternates)  
 $= 53/3 = 18$
- The vote of the majority of the CEEPC members (or their officially designated alternates) present and voting shall decide any question brought before the Committee;
  - except that two-thirds of local government officials present and voting must affirmatively support any matter concerning work program, Bylaw amendment, advocacy statement, or recommendation to the COG Board of Directors.

# COG Committee Structure



# COG Climate, Energy and Environment Policy Committee

## *Technical Committee Structure*

### Climate, Energy and Environment Policy Committee

Regional Energy  
Outreach & Education  
Work Group

Intergovernmental  
Green Building Group

Energy Advisory  
Committee

Solid Waste Managers  
Recycling Committee

Street Light  
Work Group

### Affiliated

Alternative Fuels /Clean Cities  
Partnership

Clean Air Partners

### Supporting

MWAQC Technical Advisory Committee  
Water Resources Technical Committee  
TPB Technical Committee  
Planning Directors Technical Advisory  
Committee  
Emergency Managers Committee